


Legend

-  Municipal Boundaries
- Subareas**
-  Subarea A (Palm Beach Little Ranches)
-  Subarea B (Paddock Park/Saddle Trail)
-  Subarea C (Palm Beach Point/Orange Point)
-  Subarea D (Wellington Country Place/The Equestrian Club)
-  Subarea E (Rustic Ranches)
-  Subarea F (Winding Trails)

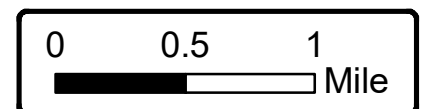


Exhibit 'A'



Adopted Bridle Path System

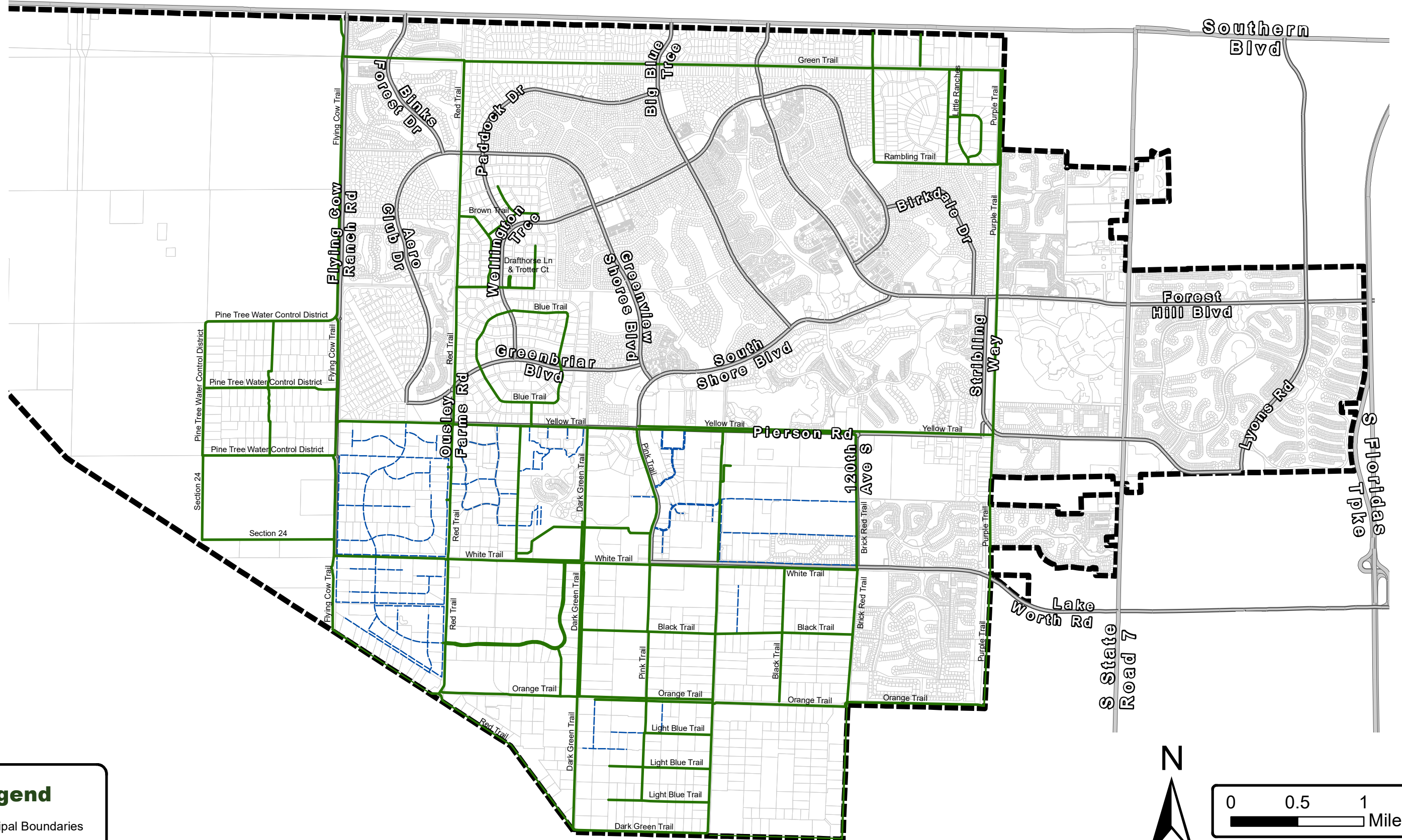
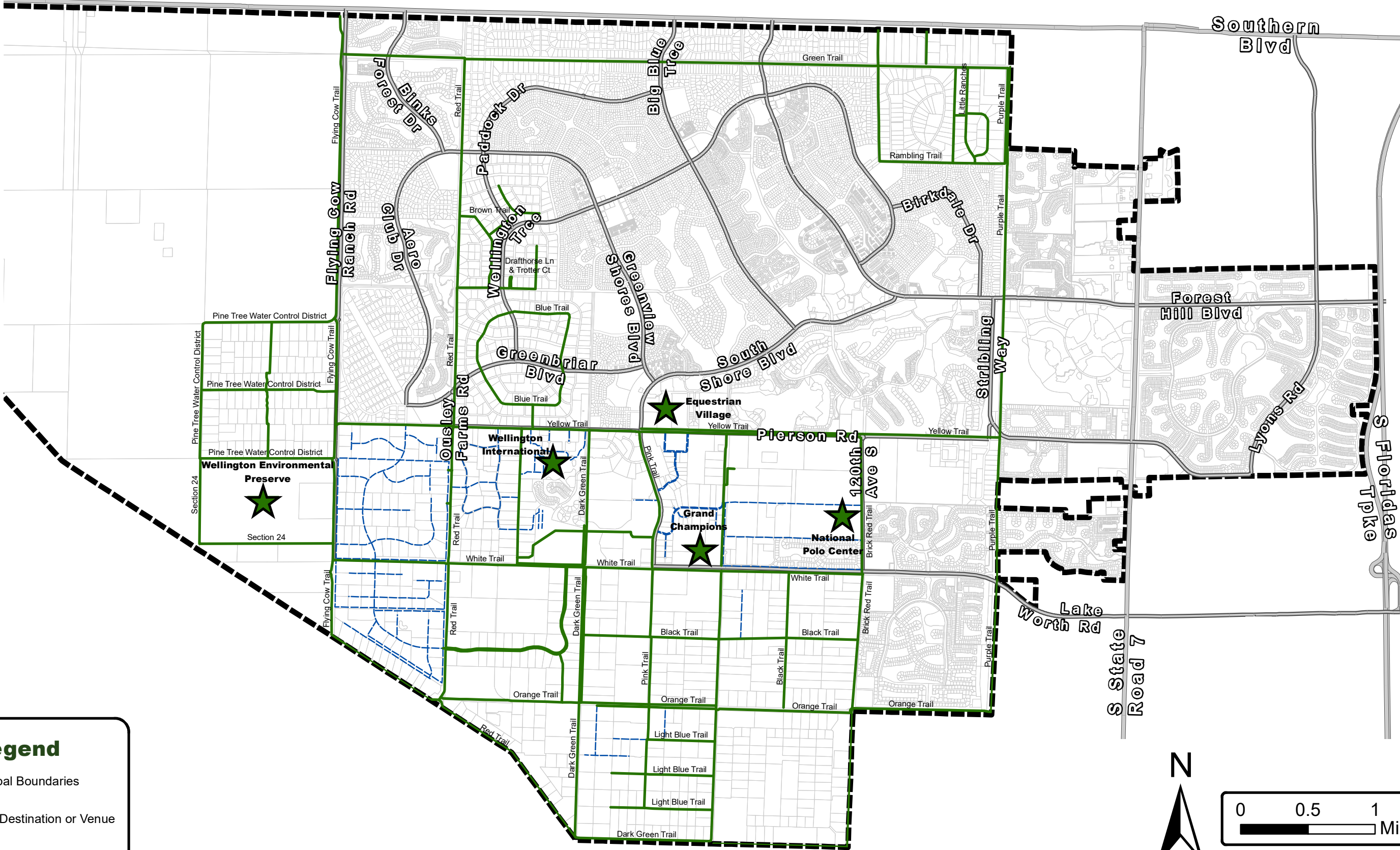


Exhibit 'B'

Wellington Planning & Zoning • 12300 Forest Hill Blvd • Wellington, FL 33414
• 561.791.4000 • www.wellingtonfl.gov

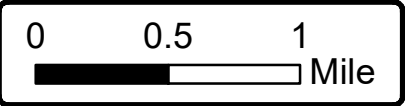


Equestrian Destinations



Legend

- Municipal Boundaries
- Local Destination or Venue
- Public Equestrian Trail
- Private Equestrian Trail





Equestrian Trails Circulation Master Plan

Bridle Path Trip Count

Exhibit D

Bridle Path Trip Counts:

- 2501 + Trips
- 501 - 2500 Trips
- 101 - 500 Trips
- 0 - 100 Trips

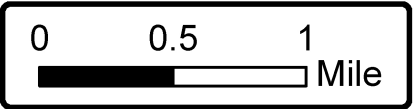
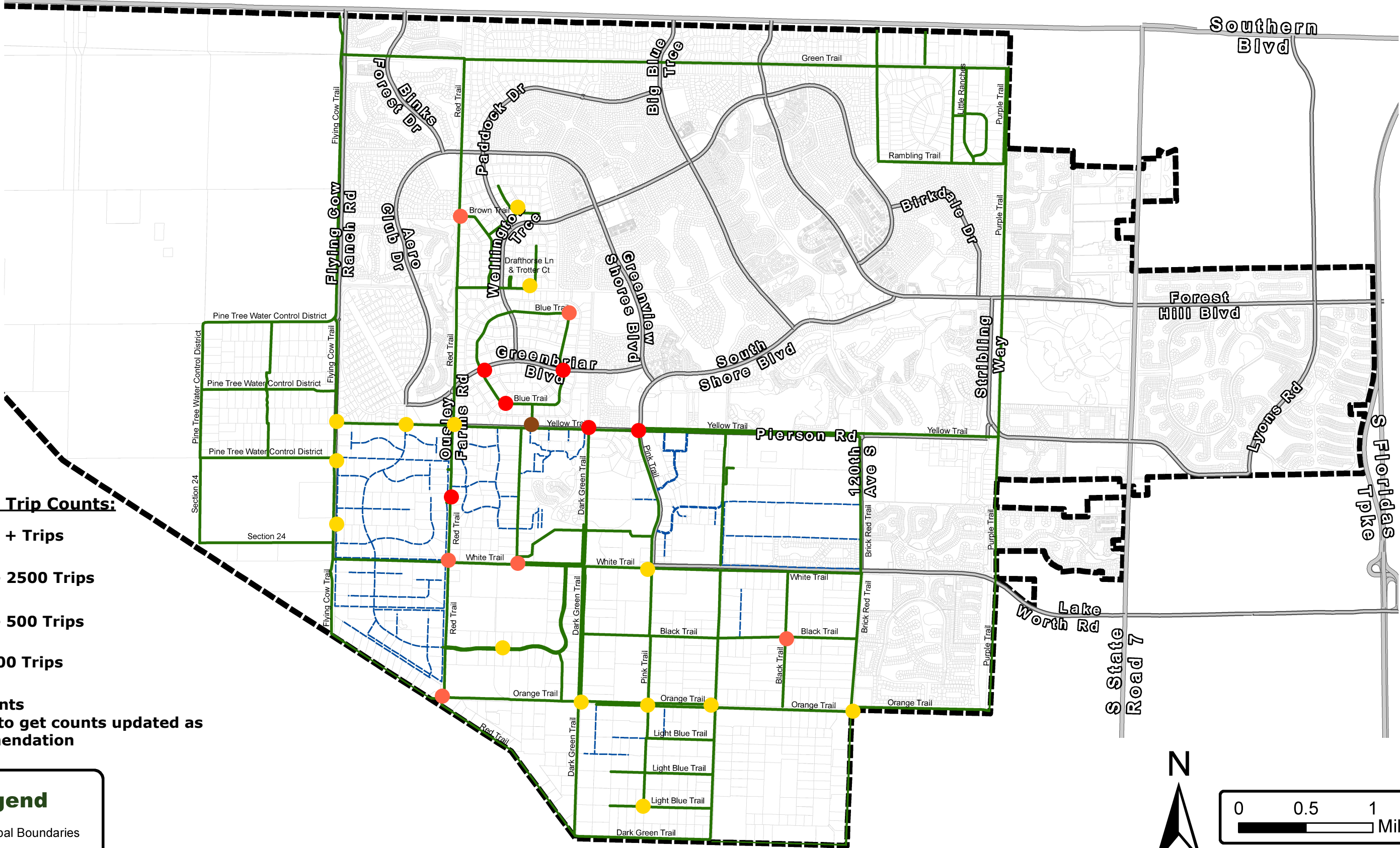
* 2014 Counts
* Proposal to get counts updated as a recommendation

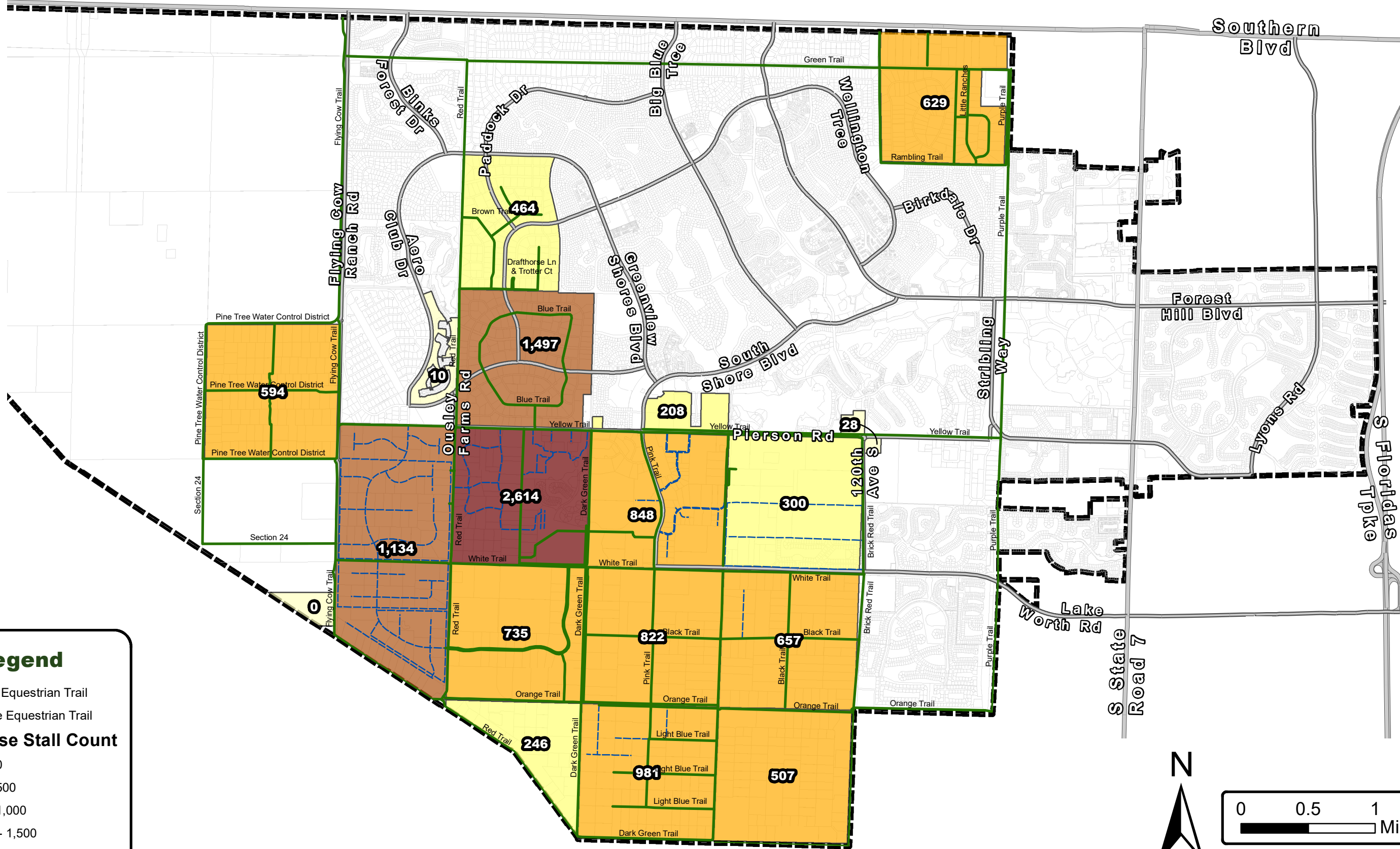
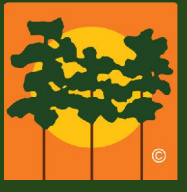
Legend

Municipal Boundaries

Public Equestrian Trail

Private Equestrian Trail





Legend

Public Equestrian Trail

Private Equestrian Trail

2023 Horse Stall Count

0 - 100

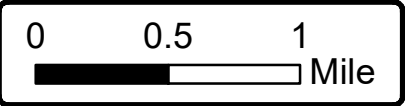
101 - 500

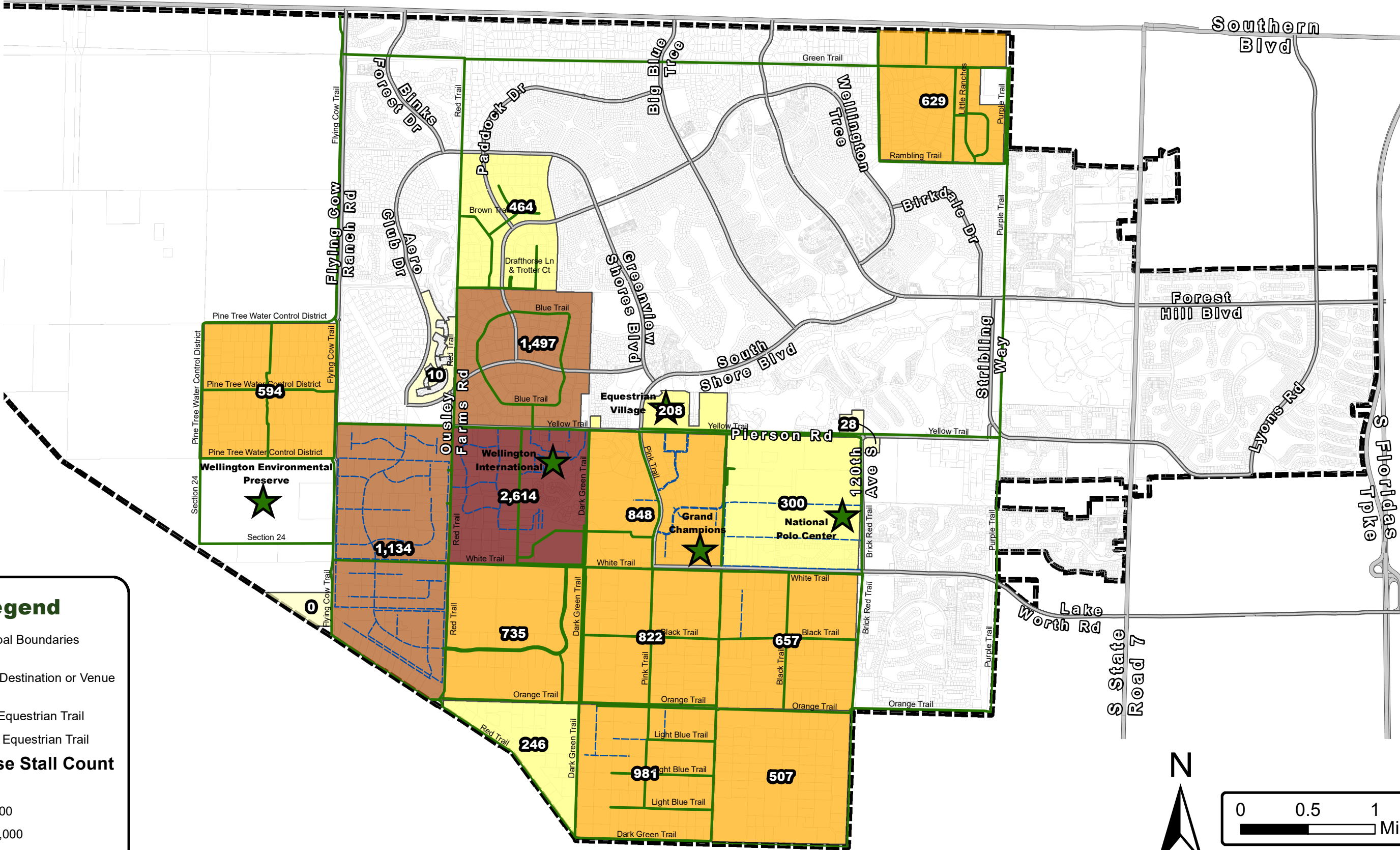
501 - 1,000

1,001 - 1,500

1,501 - 2,614

Municipal Boundaries





Legend

Municipal Boundaries

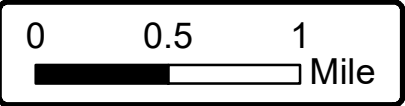
Local Destination or Venue

Public Equestrian Trail

Private Equestrian Trail

2023 Horse Stall Count

	0 - 100
	101 - 500
	501 - 1,000
	1,001 - 1,500
	1,501 - 2,614





Equestrian Trails Circulation Master Plan Recommendations 2024-2026 Exhibit G

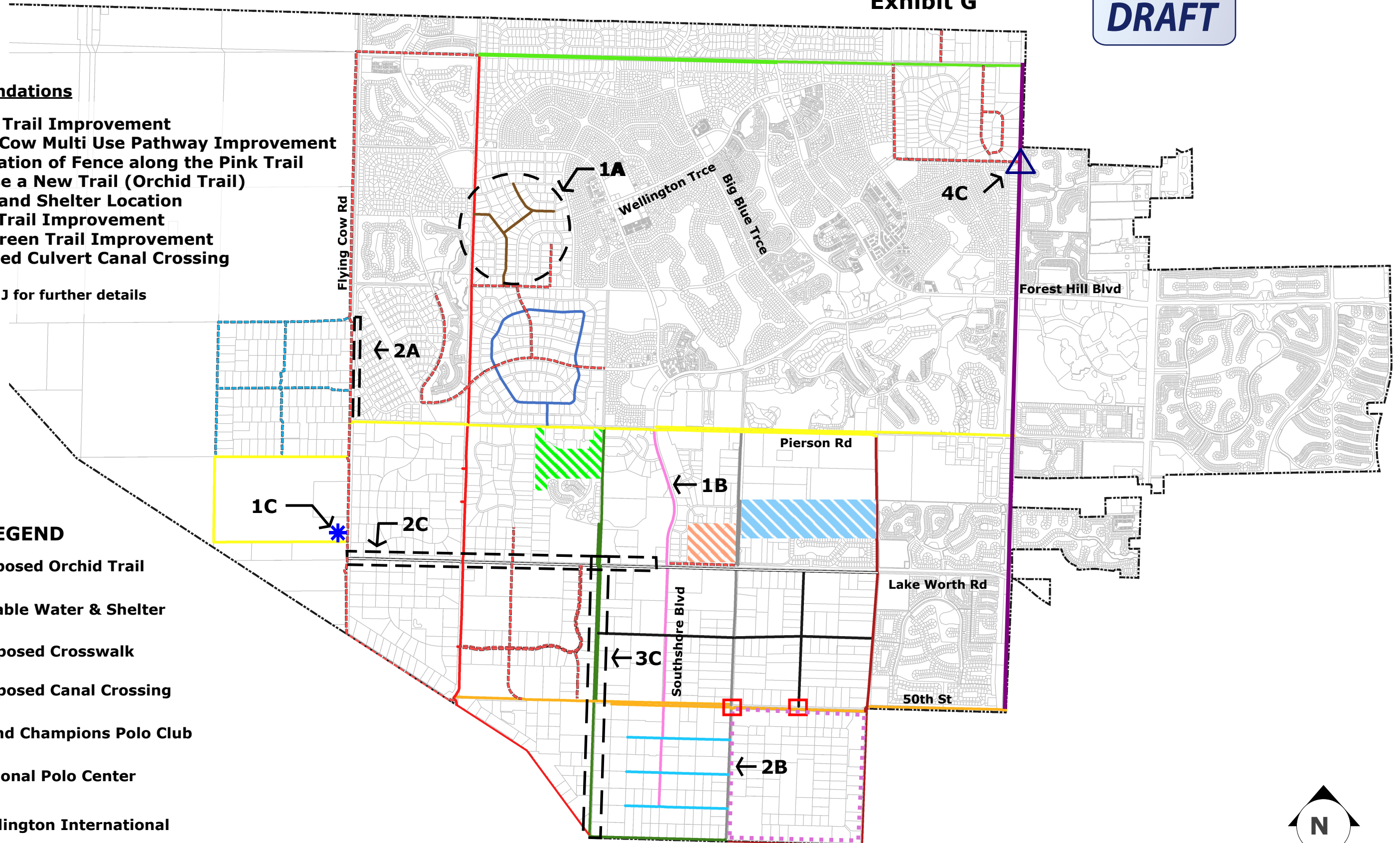
DRAFT

Recommendations

- 1A. Brown Trail Improvement
- 2A. Flying Cow Multi Use Pathway Improvement
- 1B. Installation of Fence along the Pink Trail
- 2B. Propose a New Trail (Orchid Trail)
- 1C. Water and Shelter Location
- 2C. White Trail Improvement
- 3C. Dark Green Trail Improvement
- 4C. Proposed Culvert Canal Crossing

*See Exhibit J for further details

- ### LEGEND
- Proposed Orchid Trail
 - ✱ Potable Water & Shelter
 - Proposed Crosswalk
 - △ Proposed Canal Crossing
 - Grand Champions Polo Club
 - National Polo Center
 - Wellington International

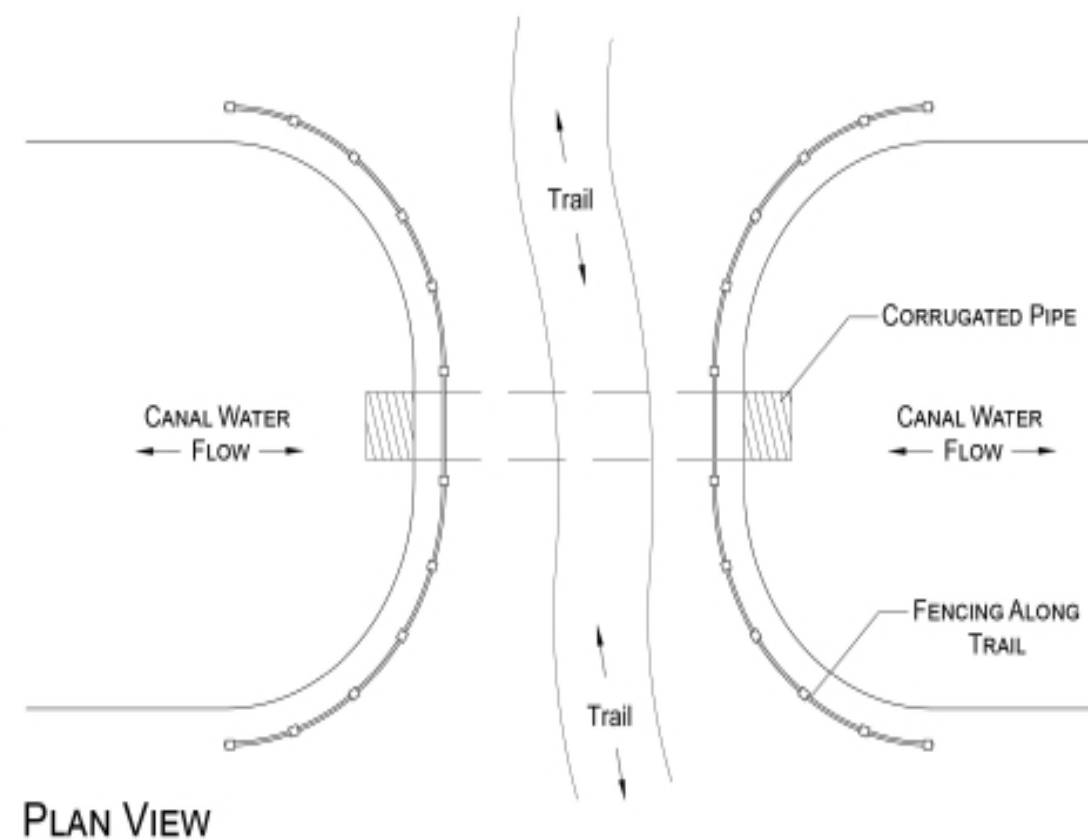




Equestrian Trails Circulation Master Plan Typical Canal Crossings Exhibit H

CULVERT CROSSING

A CULVERT CANAL CROSSING IS THE MOST COMMON WAY TO BRIDGE THE GAP ACROSS AN EXISTING CANAL. THIS METHOD IS CURRENTLY USED IN NUMEROUS AREAS THROUGHOUT THE VILLAGE OF WELLINGTON.



Note: Culvert size determined by Village Engineer.



CROSSING FROM FLYING COW TRAIL
TO YELLOW TRAIL



CROSSING INTO PRIVATE RESIDENCE



CROSSING ONTO ORANGE TRAIL



BLUE TRAIL CROSSING



Equestrian Trails Circulation Master Plan

Typical Trail Crossing Standards

Exhibit I

EQUESTRIAN/PEDESTRIAN CROSSING ADVANCE WARNING FLASHER ASSEMBLY SPECIFICATIONS

COMPLETE 15-FT SPUN POLE KIT TO INCLUDE ALL MOUNTING HARDWARE TO INCLUDE 15-FT CRASH TESTED 4" ROUND ALUMINUM SPUN POLE WITH PEDESTAL BASE, TOP CAP, ANCHOR BOLTS, SIGNAL HEAD MOUNT ARM, CONTROL BOX MOUNT.

PUSH BUTTON/CROSSWALK SYSTEM TO INCLUDE DOUBLE 12" YELLOW/AMBER LED'S INSTALLED IN 12" LIGHT HOUSING PLASTIC INJECTED MOLDED POLYSTYRENE TUFEN U.V. IMPREGNATED MATERIAL FOR ULTRA VIOLET RAYS, POLYCARBONATE HEADS, 20-WATT SOLAR PANEL WITH MOUNTING BRACKET, PROGRAMMABLE TIMER MODULE, ALUMINUM BATTERY BOX, CONTROLLER SOLAR POWER PACKAGE INCLUDING 2-18 AMP BATTERIES (12V-DC, 18 AMP) MOUNTING HARDWARE TO MOUNT TO EXISTING POLE AND RADIO. CONTROL CABINET IS 7-1/2" X 11-1/4" X 4", .063 ALUMINUM, LOCATED BELOW SOLAR PANEL.

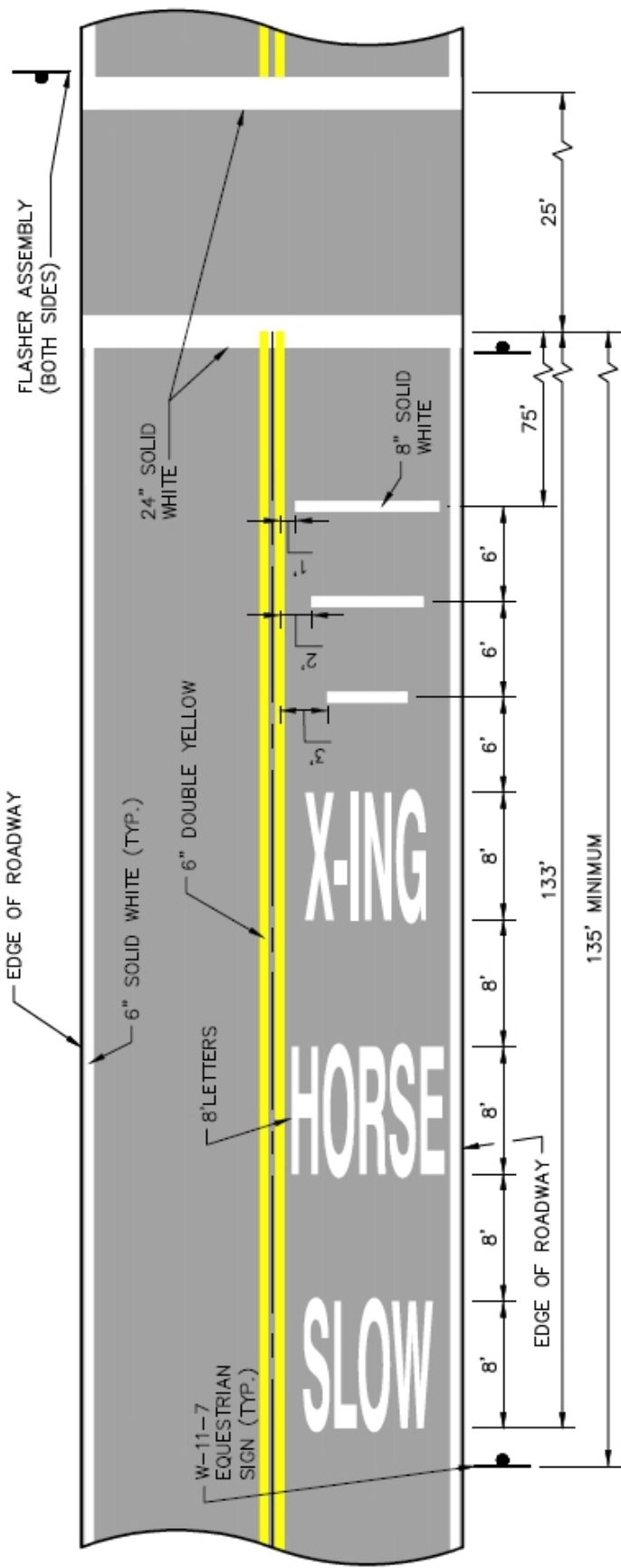
CROSSWALK PUSH BUTTON SYSTEM CONSISTING OF 2" BUTTON WITH MOMENTARY SWITCH RATED AT 36VDC AND 5"LX7" BUTTON FIXTURE WITH CROSSING SIGN INSERTED; HEAVY DUTY LONG LIFE SWITCH. SUBASSEMBLY (FOR CrossTalk OR SPLasher). 4 PUSH BUTTONS REQUIRED, 2 PER POLE. ON EACH POLE, ONE PUSH BUTTON SHALL BE INSTALLED AT 40" ABOVE GRADE FOR PEDESTRIAN USAGE AND ONE PUSH BUTTON SHALL BE INSTALLED AT 70" ABOVE GRADE FOR HORSE RIDER USAGE.

30"x30" INTERNATIONAL (PICTURE) HORSE CROSSING SIGN WITH HIGH INTENSITY REFLECTIVITY.

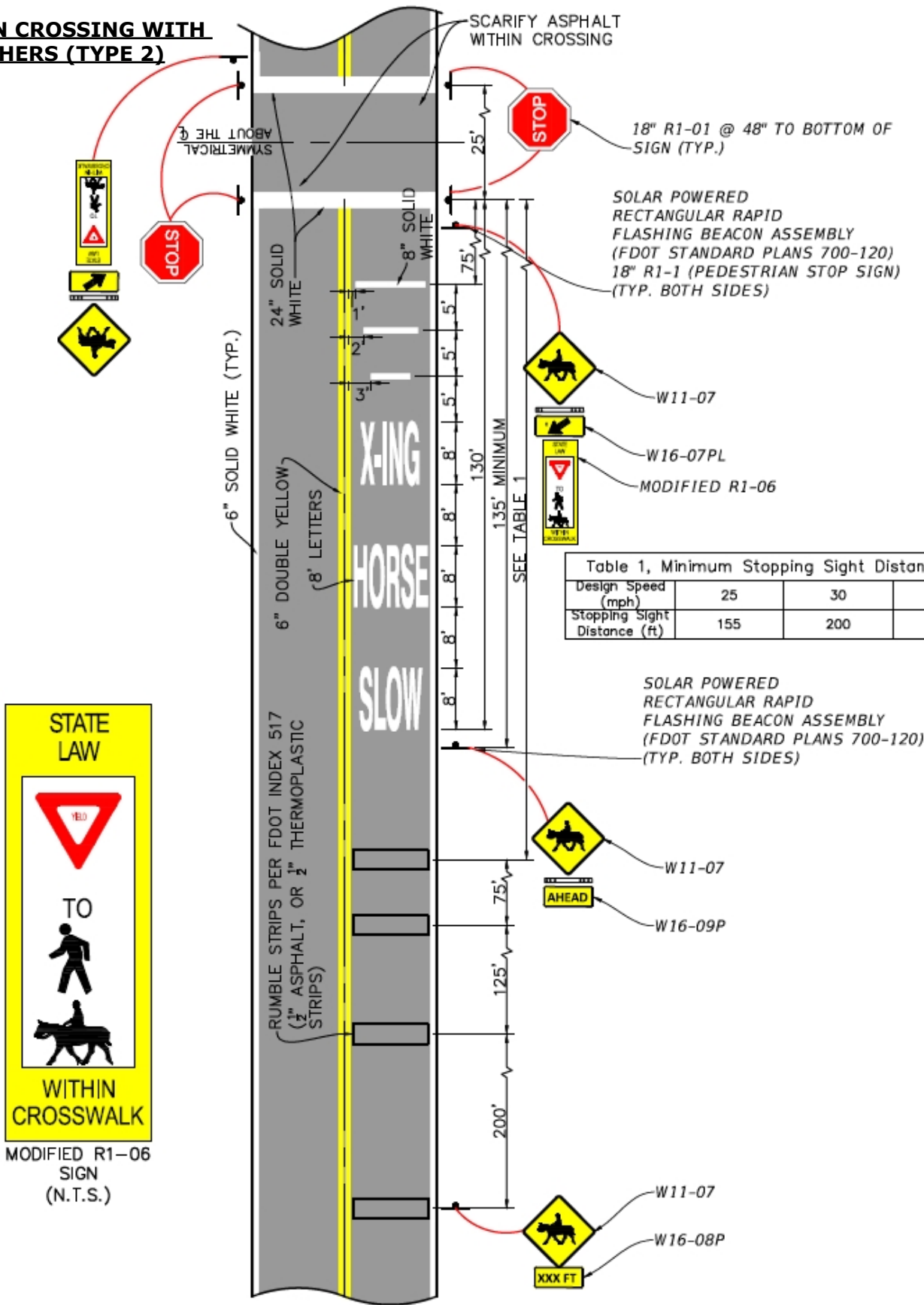
ASSEMBLY SHALL BE AS MANUFACTURED BY K&K INC. MODEL NO. ECO-132-12, OR EQUAL.



W-11-07 EQUESTRIAN CROSSING SIGN
N.T.S.



EQUESTRIAN CROSSING WITH SOLAR FLASHERS (TYPE 2)



Note: Refer to Engineering Standards Manual for specific signage and marking requirements.

DRAFT**Year One 2024-2025**

Improvements	Estimated Costs	Priority Level
1A. Brown Trail Improvement –improve approximately 7,220 ft. of overall bridle path by installing asphalt millings to improve footing and add swales to improve stormwater drainage.	\$350,000	Medium
2A. Flying Cow Multi Use Pathway Improvement – west of the C-1 Canal between north point of Rustic ranches to the yellow trail and add entry points to guardrail.	\$100,000	Low
3A. Trail Count Study Update- conduct and collect trail use counts.	\$50,000	High

Total Cost Estimates Year 1: \$500,000**Year Two 2025-2026**

Improvements	Estimated Costs	Priority Level
1B. Installation of Fencing along the Pink Trail (Southshore Blvd)- install approximately 14,900 ft. of fencing along the west side of Southshore Blvd.	\$300,000	Low
2B. Propose a New Trail within Section 34 (Orchid Trail)- propose a new trail approximately 21,100 ft. within the boundaries of Section 34 to accommodate the increased use by the riders.	\$700,000	High
3B. Trail Signage Program- Install a series of trail safety signs Wellington-wide in accordance to the Trail Signage Master Plan.	\$100,000	High
4B. Roadway Sign Program- Install a series of roadway signs Wellington-wide in accordance to the Roadway Signage Master Plan.	\$200,000* (*assume \$10k annually for maintenance)	High

Total Cost Estimates Year 2: \$1,300,000

DRAFT**Year Three 2026-2027**

Improvements	Estimated Costs	Priority Level
1C. Water and Shelter Location – propose one (1) shelter location on Flying Cow Trail adjacent to the Environmental Preserve to provide water and shade for horses and riders. The proposed location may also be implemented within the Environmental Preserve Expansion site.	\$150,000	Low
2C. White Trail Improvement – north and south sides of the C-24 Canal between South Shore and Flying Cow Road install asphalt millings to improve footing.	\$250,000	Medium
3C. Dark Green Trail Improvement – east and west sides of the C-4 Canal install asphalt millings to improve footing.	\$350,000	Low
4C. Culvert Crossing over C-8 Canal (Rustic Ranches) - construct a culvert canal crossing over the C-8 canal	\$250,000	Medium

Total Cost Estimates Year 3: \$1,000,000