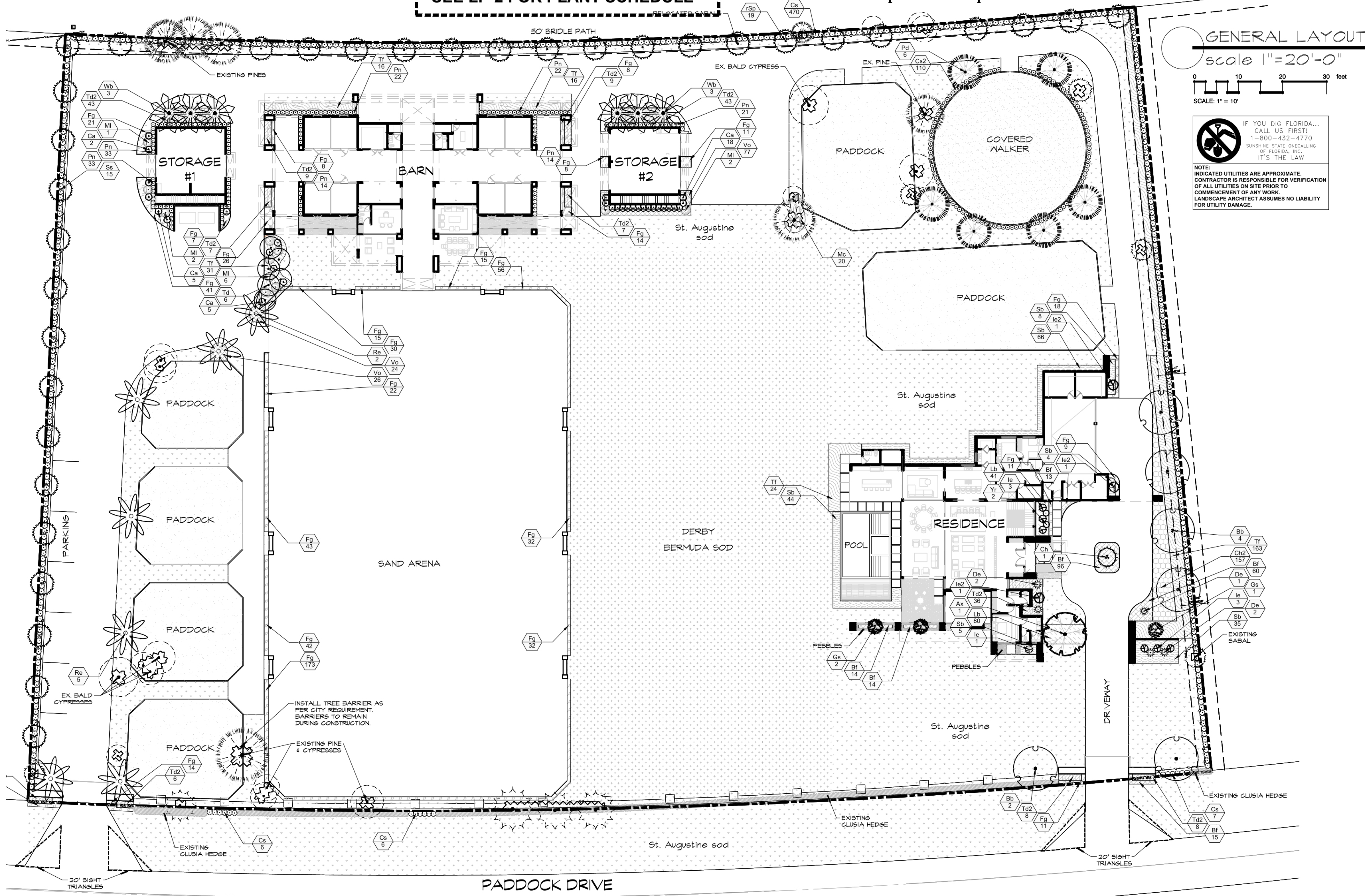


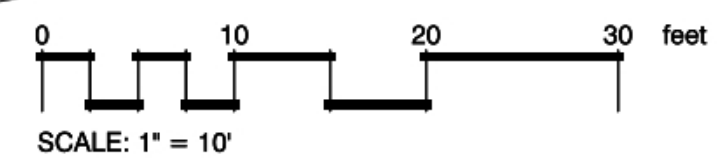
SEE LP-2 FOR PLANT SCHEDULE

Exhibit E - Proposed Landscape Plan



GENERAL LAYOUT

scale 1"=20'-0"



IF YOU DIG FLORIDA...  
CALL US FIRST!  
1-800-432-4770  
SUNSHINE STATE ONECALLING  
OF FLORIDA, INC.  
IT'S THE LAW

NOTE:  
INDICATED UTILITIES ARE APPROXIMATE.  
CONTRACTOR IS RESPONSIBLE FOR VERIFICATION  
OF ALL UTILITIES ON SITE PRIOR TO  
COMMENCEMENT OF ANY WORK.  
LANDSCAPE ARCHITECT ASSUMES NO LIABILITY  
FOR UTILITY DAMAGE.



Gabriela Fojt

Digitally signed by Gabriela Fojt  
Date: 2026.04.27  
16:26:43 -04'00'

The Mirror of Paradise

Gabriela Fojt  
LA 6667277  
ISA FL-10207A

2300 E Oakland Park Blvd  
Suite 208  
Fort Lauderdale  
FL 33306  
c (954) 478 3064  
www.florida-landscape.com  
gabriela@themirrorofparadise.com



SCALE	1"=20'-0"
DESIGNED BY	GF
DRAWN BY	KM,GF
CHECKED BY	GF
DATE	04.27.2026
REVISIONS	

14902 & 14912 PADDOCK DRIVE  
WELLINGTON  
FLORIDA

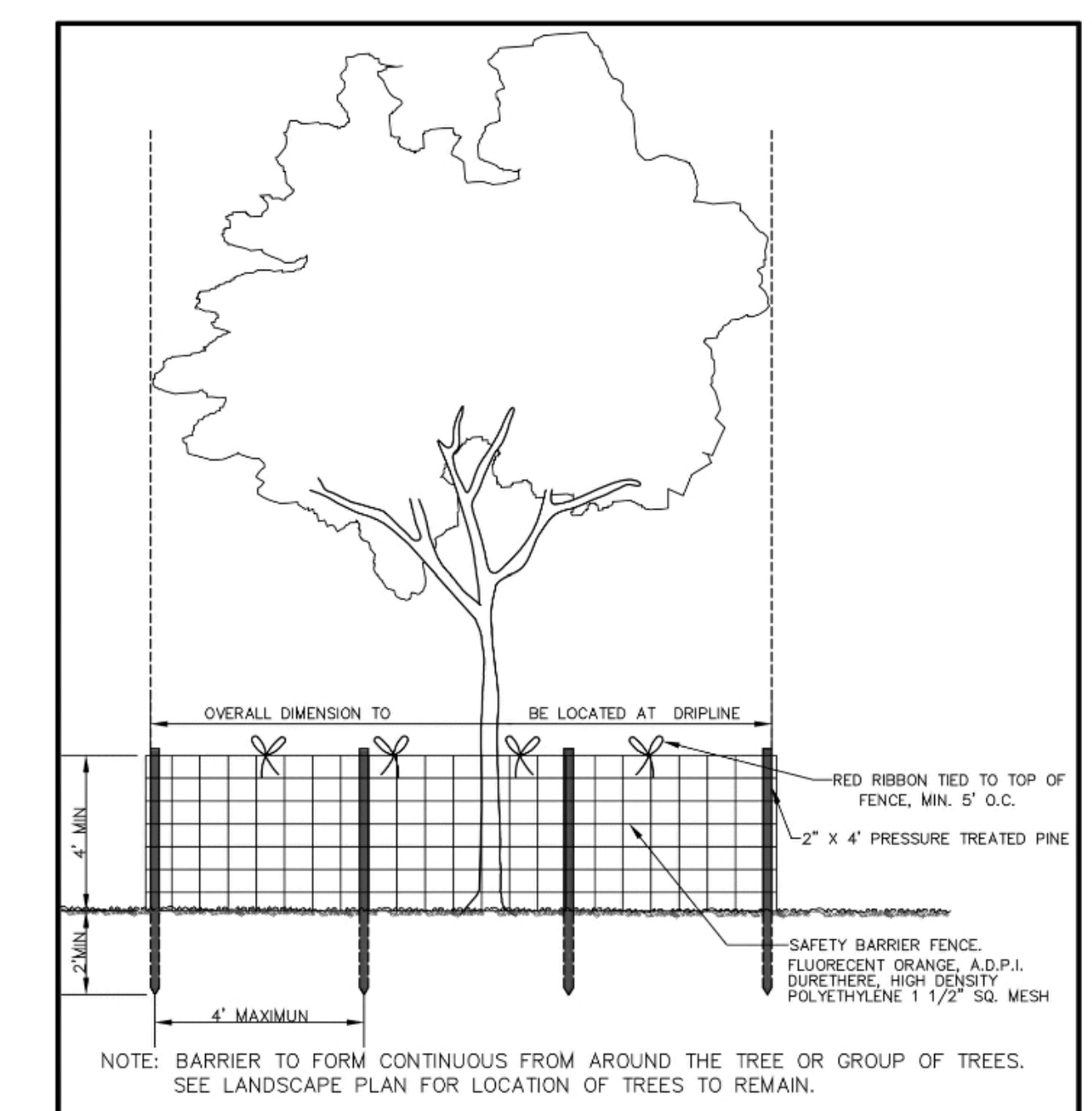
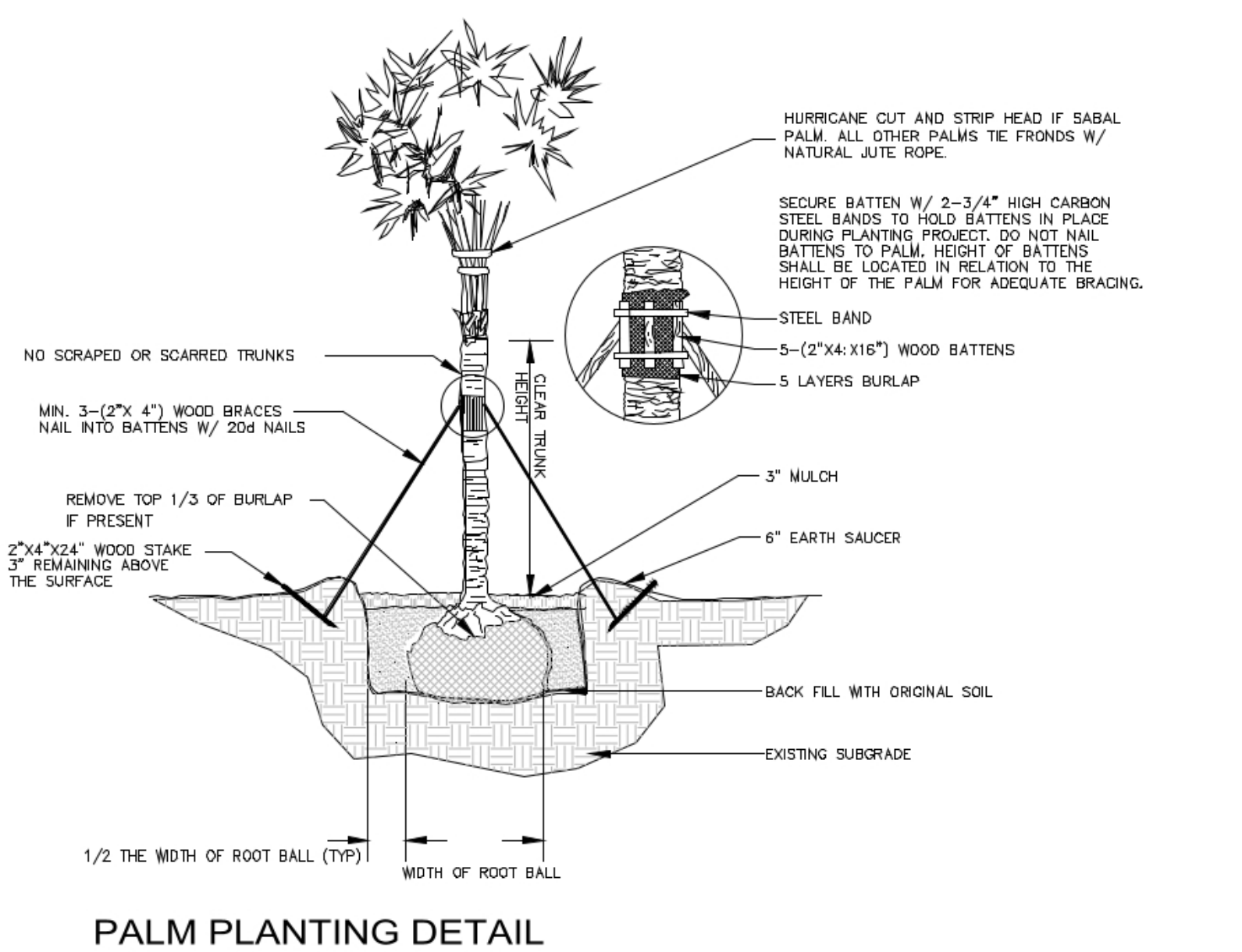
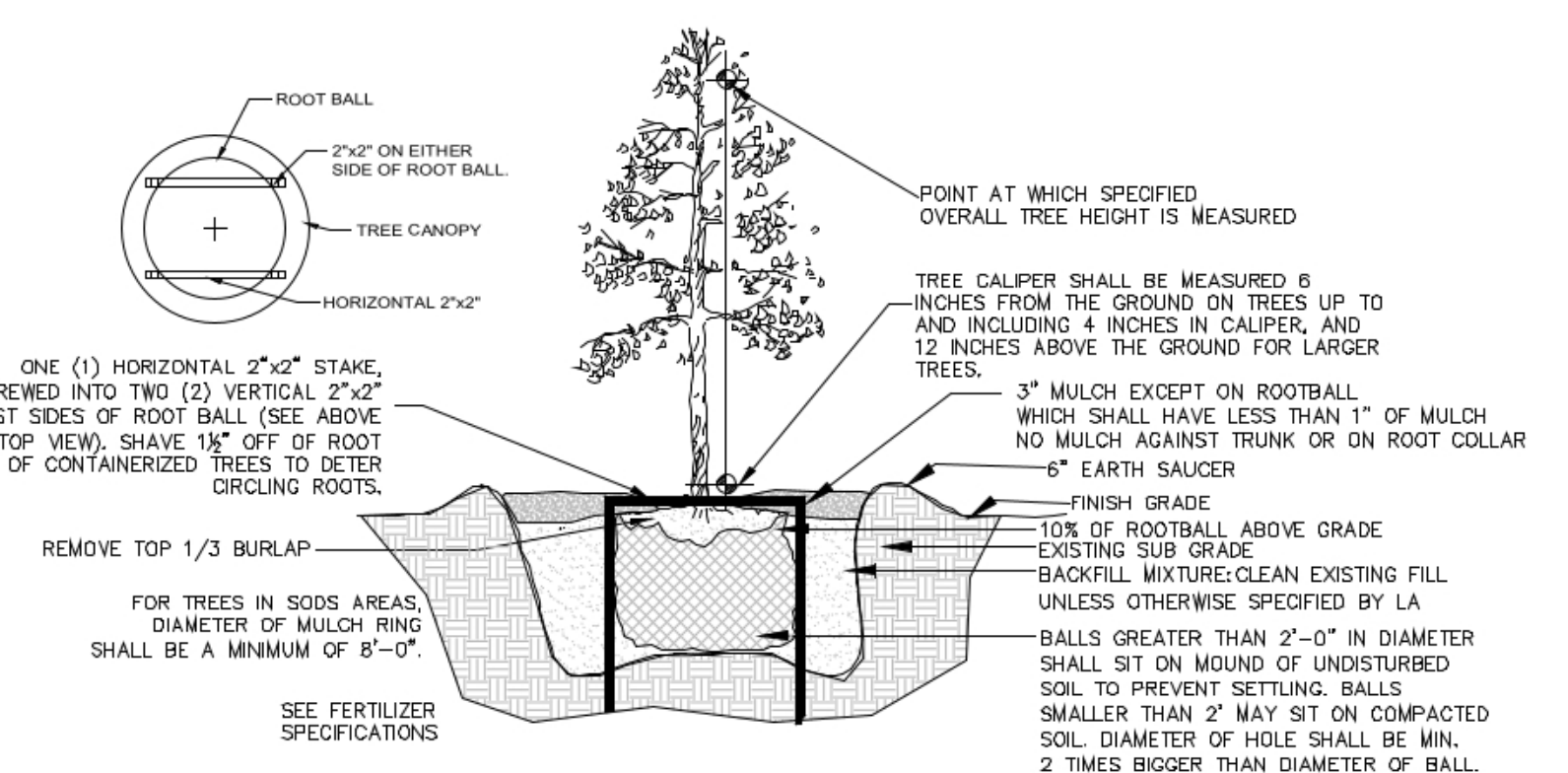
LANDSCAPE PLAN

PLANT SCHEDULE								
SYMBOL	CODE	QTY	BOTANICAL NAME	COMMON NAME	SIZE	SPACING	NATIVE	DROUGHT RESIST.
<b>TREES</b>								
	Ax	1	Acacia xanthophloea provide picture for LA approval	Fever Tree	16'-18'OA	AS SHOWN	NO	MODERATE
	Bb	6	Bucida buceras	Black Olive	16'OA, matched	AS SHOWN	NO	HIGH
	Ch	1	Chamaerops humilis	Mediterranean Fan Palm	7'-8'OA, multi w/character	AS SHOWN	NO	HIGH
	Gs	3	Guaiacum sanctum provide pictures for LA approval	Lignum Vitae	7'-8'OA	AS SHOWN	NO	HIGH
	Ie	7	Ilex x attenuata 'Eagleston'	Eagleston Holly	10'OA, ftb, matched	AS SHOWN	YES	HIGH
	Ie2	3	Ilex x attenuata 'Eagleston'	Eagleston Holly	12'OA, std, matched	AS SHOWN	YES	HIGH
	MI	11	Magnolia grandiflora 'Little Gem'	Little Gem Dwarf Southern Magnolia	8'OA, full, matched	AS SHOWN	YES	MODERATE
	Pd	6	Pinus elliottii densa	Slash Pine	12'OA, matched	AS SHOWN	YES	HIGH
	Re	7	Roystonea elata	Florida Royal Palm	10'GW, matched	AS SHOWN	YES	HIGH
	Ss	15	Sabal palmetto	Cabbage Palmetto	8'CT, matched	AS SHOWN	YES	HIGH
	Td	6	Taxodium distichum	Bald Cypress	8'-14'OA staggered	AS SHOWN	YES	HIGH
	Wb	6	Wodyetia bifurcata	Foxtail Palm sngl	8'GW, matched	AS SHOWN	NO	HIGH
<b>RELOCATED PALMS</b>								
	rSp	19	Sabal palmetto	Cabbage Palmetto	see DT-1	AS SHOWN	YES	HIGH
<b>SHRUBS</b>								
	Ca	30	Callicarpa americana	American Beautyberry	3'-4'OA, ftb	AS SHOWN	YES	HIGH
	Cs2	110	Clusia guttifer	Small Leaf Clusia	3 gal, full	24"OC	NO	HIGH
	Cs	489	Clusia guttifer	Small Leaf Clusia	5'OA, ftb	30"OC	NO	HIGH
	De	5	Dioon edule	Mexican Cycad	4'-5'OA	AS SHOWN	NO	HIGH
	Pn	159	Psychotria nervosa	Wild Coffee	3 gal, ftb	24"OC	YES	HIGH
	Yr	2	Yucca rostrata	Beaked Yucca	3'-3.5'OA	AS SHOWN	NO	HIGH
<b>SHRUB AREAS</b>								
	Bf	212	Bulbine frutescens	Bulbine	1 gal	15"OC	NO	HIGH
	Ch2	157	Chrysobalanus icaco 'Horizontalis'	Horizontal Coco Plum	3 gal	24"OC	YES	HIGH
	Fg	684	Ficus microcarpa 'Green Island'	Green Island Indian Laurel Fig	3 gal, full	18"OC	NO	HIGH
	Lb	121	Liriope muscari 'Big Blue'	Big Blue Lilyturf	1 gal, full	18"OC	NO	MODERATE
	Mc	20	Muhlenbergia capillaris	Pink Muhly Grass	1 gal	30"OC	YES	HIGH
	Sb	162	Spartina bakeri	Sand Cordgrass	1 gal	30"OC	YES	HIGH
	Tf	468	Tripsacum dactyloides	Fakahatchee Grass	1 gal	36"OC	YES	HIGH
	Td2	185	Tripsacum floridanum	Dwarf Fakahatchee	1 gal	24"OC	YES	HIGH
	Vo	127	Viburnum obovatum	Walter's Viburnum	3 gal	18"OC	YES	HIGH
<b>GROUND COVERS</b>								
	Cd	29,659 sf	Cynodon dactylon	Bermudagrass	sod			
	Ss2	43,347 sf	Stenotaphrum secundatum	St. Augustine Grass	sod			

- NOTES:
- SOD & MULCH AS INDICATED.
  - MULCH ALL BEDS AS INDICATED ON DETAIL.
  - IT IS THE CONTRACTOR'S RESPONSIBILITY TO VERIFY PLANT, SOD AND MULCH AMOUNTS FOR BIDDING PURPOSES.
  - PLAN DRAWING TAKES PRECEDENCE OVER ANY QUANTITY SCHEDULES.

**HORIZONTAL CLEARANCE TO UTILITIES, A MINIMUM 5 FT IS REQUIRED FOR SMALL TREES AND 10 FT FOR LARGE TREES WITH INTRUSIVE ROOT SYSTEMS. IF CLEARANCE LESS THAN REQUIRED, INSTALL ROOT BARRIERS (BY DEEPROOT OR EQUIVALENT) MIN. 12" FROM UTILITY AS PER CITY REQUIREMENTS AND MANUFACTURER INSTRUCTIONS**

LANDSCAPE REQUIREMENTS SINGLE RESIDENTIAL	Required	Existing	Proposed	Total Provided
<b>Plants required on the lot</b> min. 1 tree/each 1,500 sf of lot for max. 30 trees min. 20 shrubs/each tree	30 trees 600 shrubs	34 ex. & 19 relocated 140 Clusia	71 (+)600	124 provided (+)600 provided
<b>Project plants</b> min. 25% of trees and 75% of shrubs to be planted in front min. 50% of trees to be 16'OA and 14'GW for palms min. species required min. 10% of required trees to be flowering species min. 20% of required trees to be palms min. 10% of required shrubs to be flowering species min. shrub species required	8 trees & 150 shrubs 15 3 3 6 60 5	140 Clusia 24 trees 3 21	(+)25% 6 trees 9 12 28 127 15	(+)25% provided 30 provided 12 provided 12 provided 49 provided 127 provided 15 provided



*Gabriela Fojt*  
 Gabriela Fojt  
 Digitally signed by Gabriela Fojt  
 Date: 2026.04.27 16:27:05 -04'00'

*The Mirror of Paradise*  
 Gabriela Fojt  
 LA 6667277  
 ISA FL-10207A

2300 E Oakland Park Blvd  
 Suite 208  
 Fort Lauderdale  
 FL 33306  
 c. (954) 478 3064  
 www.florida-landscape.com  
 gabriela@themirrorofparadise.com



SCALE AS NOTED  
 DESIGNED BY GF  
 DRAWN BY KM,GF  
 CHECKED BY GF  
 DATE 04.27.2026  
 REVISIONS

14902 & 14912 PADDOCK DRIVE  
 WELLINGTON  
 FLORIDA

PLANTS SCHEDULE, CODE CHART & DETAILS