

FARRELL ESTATES WELLINGTON

A PARCEL OF LAND BEING A REPLAT OF PARCEL B OF THE PLAT OF POLO HOUSE AT PALM BEACH POLO & COUNTY CLUB POA INC. AND LYING IN SECTION 14, TOWNSHIP 44 SOUTH, RANGE 41 EAST, THE VILLAGE OF WELLINGTON, PALM BEACH COUNTY, FLORIDA
SHEET 2 OF 2

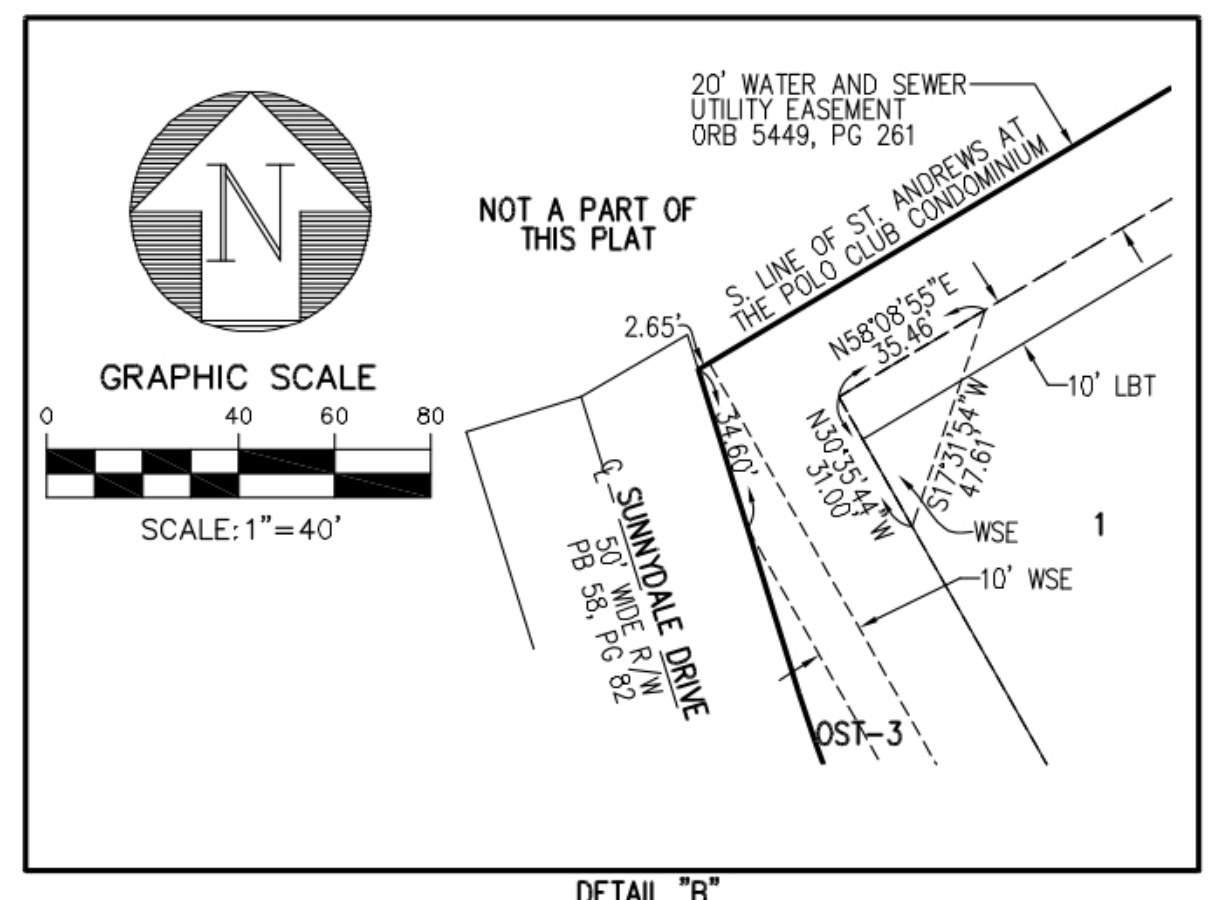
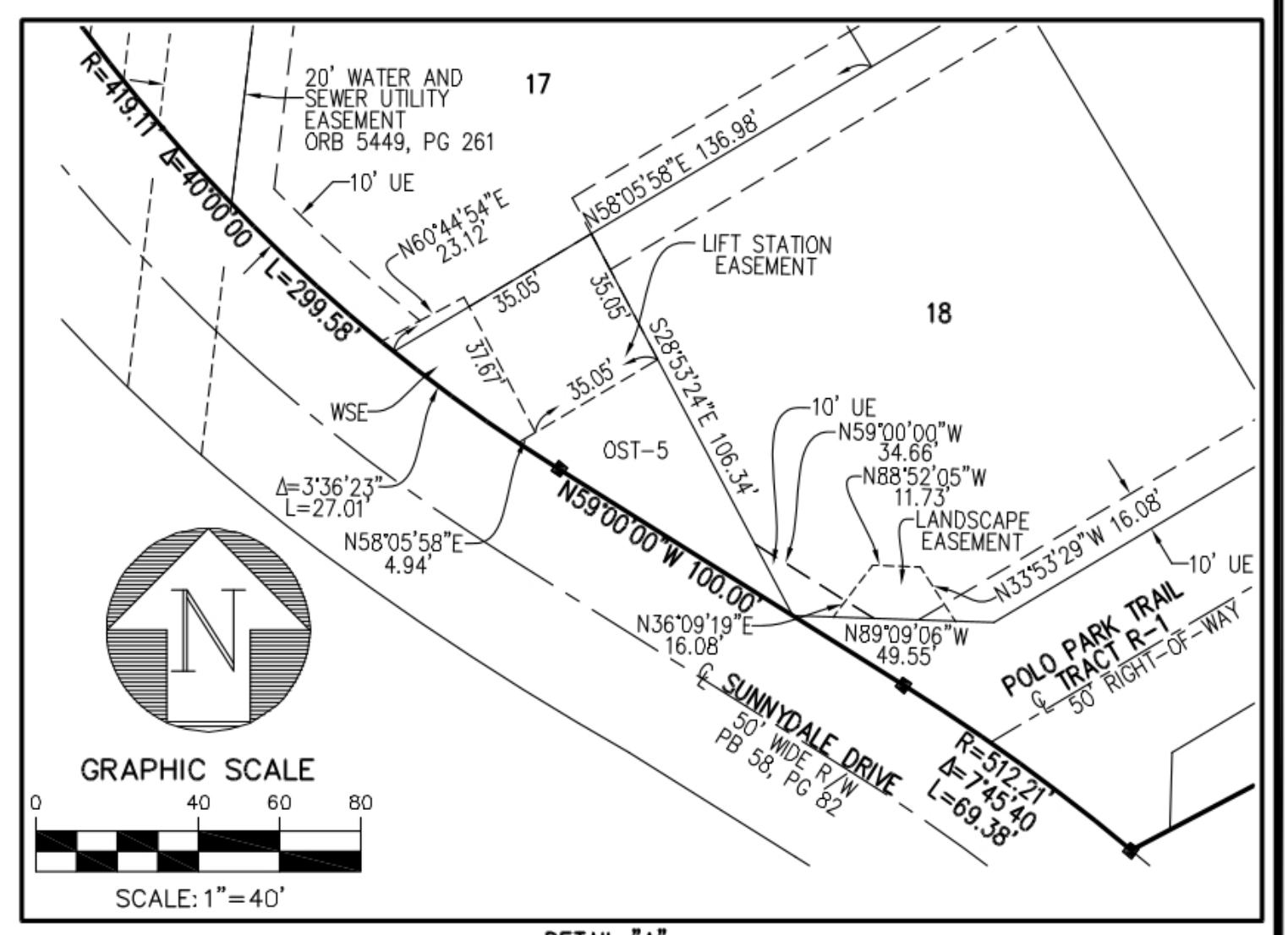
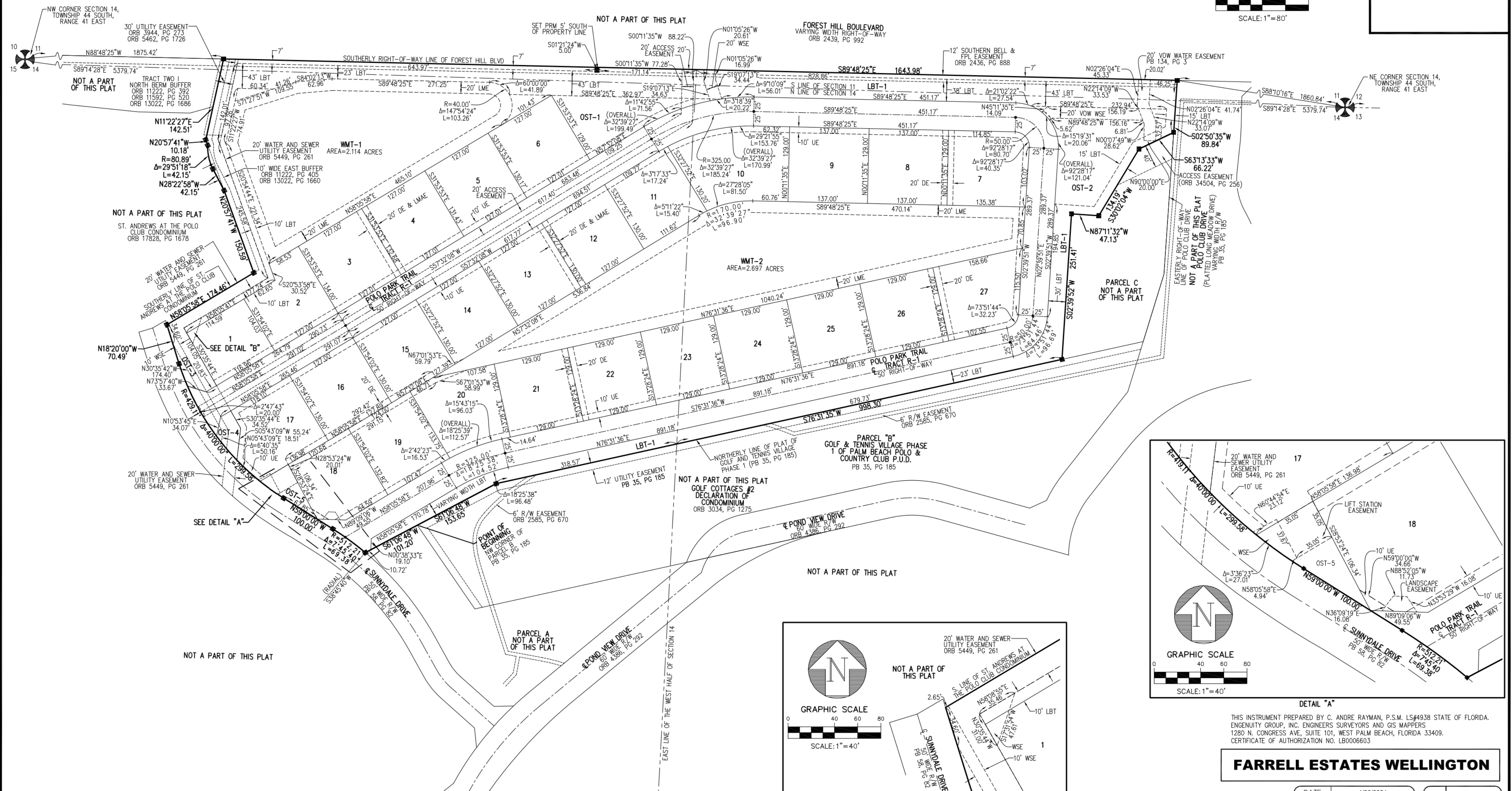
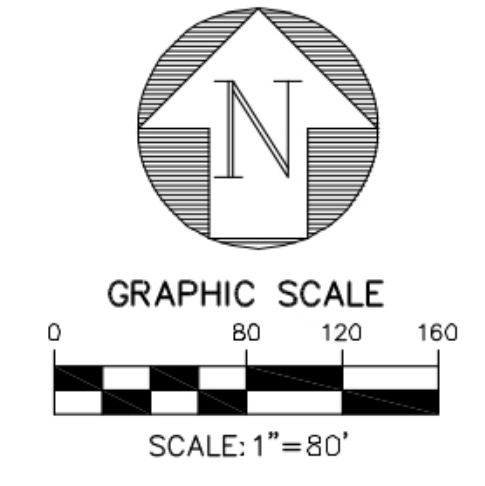
STATE OF FLORIDA
COUNTY OF PALM BEACH

THIS PLAT WAS FILED FOR RECORD AT _____

THIS _____ DAY OF _____ AND DULY RECORDED IN PLAT BOOK NO. _____ ON PAGE(S) _____

JOSEPH ABRUZZO,
CLERK AND CIRCUIT COURT & COMPTROLLER

BY: _____ DEPUTY CLERK



THIS INSTRUMENT PREPARED BY C. ANDRE RAYMAN, P.S.M. LS#4938 STATE OF FLORIDA. ENGENUITY GROUP, INC. ENGINEERS SURVEYORS AND GIS MAPPERS 1280 N. CONGRESS AVE, SUITE 101, WEST PALM BEACH, FLORIDA 33409. CERTIFICATE OF AUTHORIZATION NO. LB0006603

FARRELL ESTATES WELLINGTON

DATE	4/26/2024
SCALE	1"=80'
CAD FILE	21176.01
SDSK PROJECT	21176.01
DRAWN	JCM
CHECKED	CAR

A Higher Standard of Excellence
engenuity group inc.
ENGINEERS • SURVEYORS • GIS MAPPERS

1280 N. CONGRESS AVENUE, SUITE 101,
WEST PALM BEACH, FLORIDA 33409
PH (561)655-1151 • FAX (561)832-9390
WWW.ENGENUITYGROUP.COM

SHEET
2/2
JOB NO.
21176.01