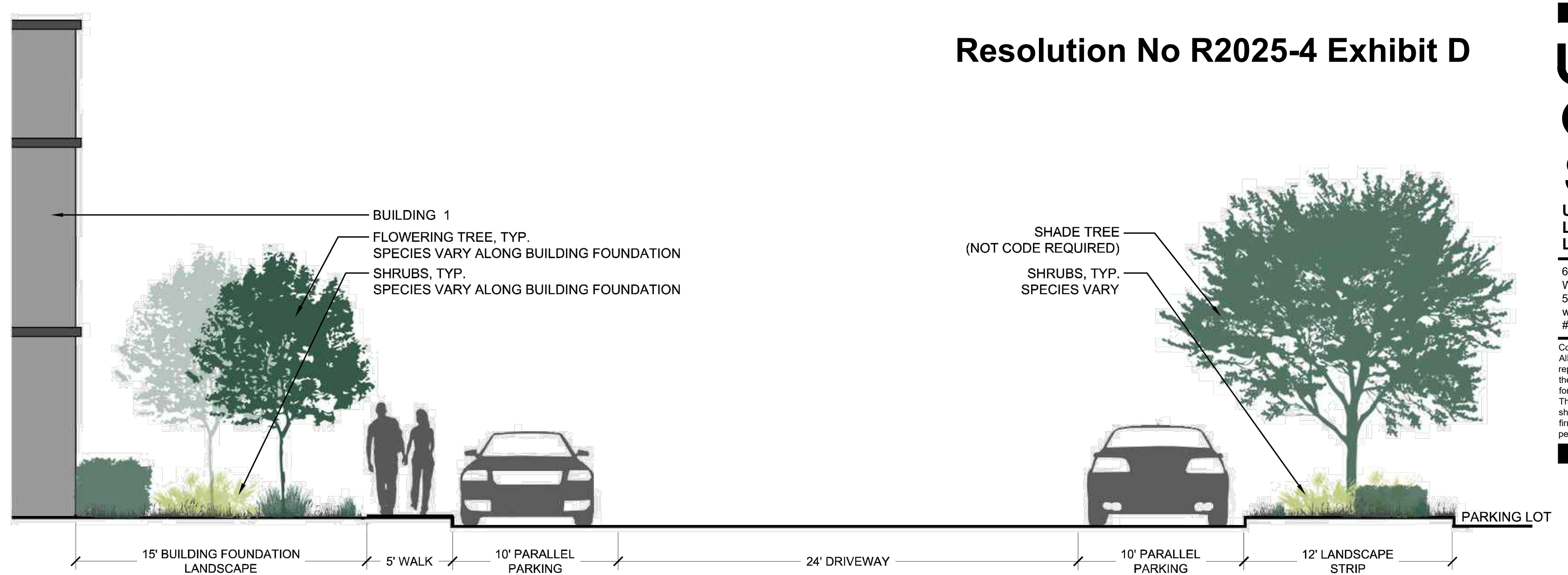
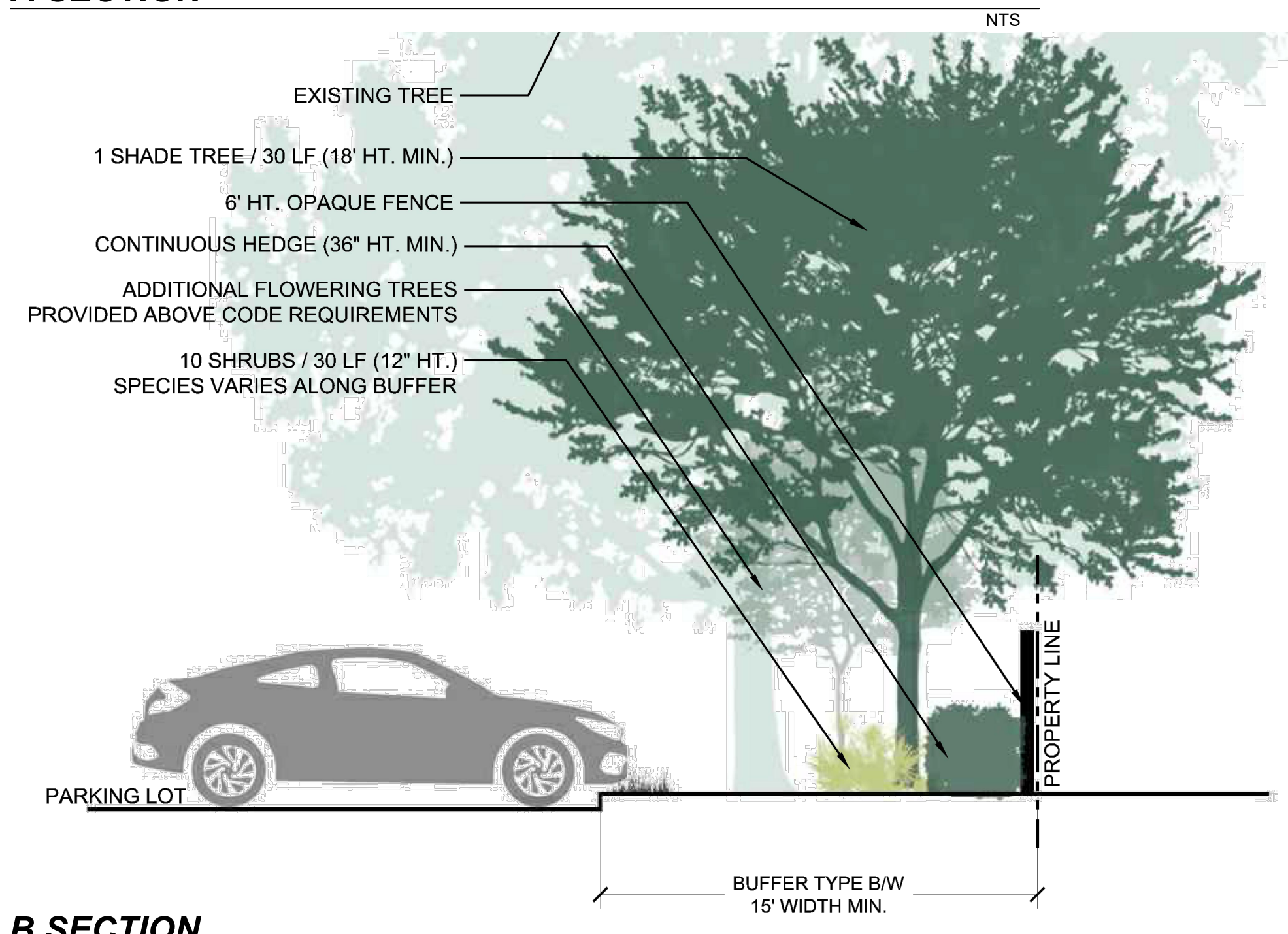


A SECTION



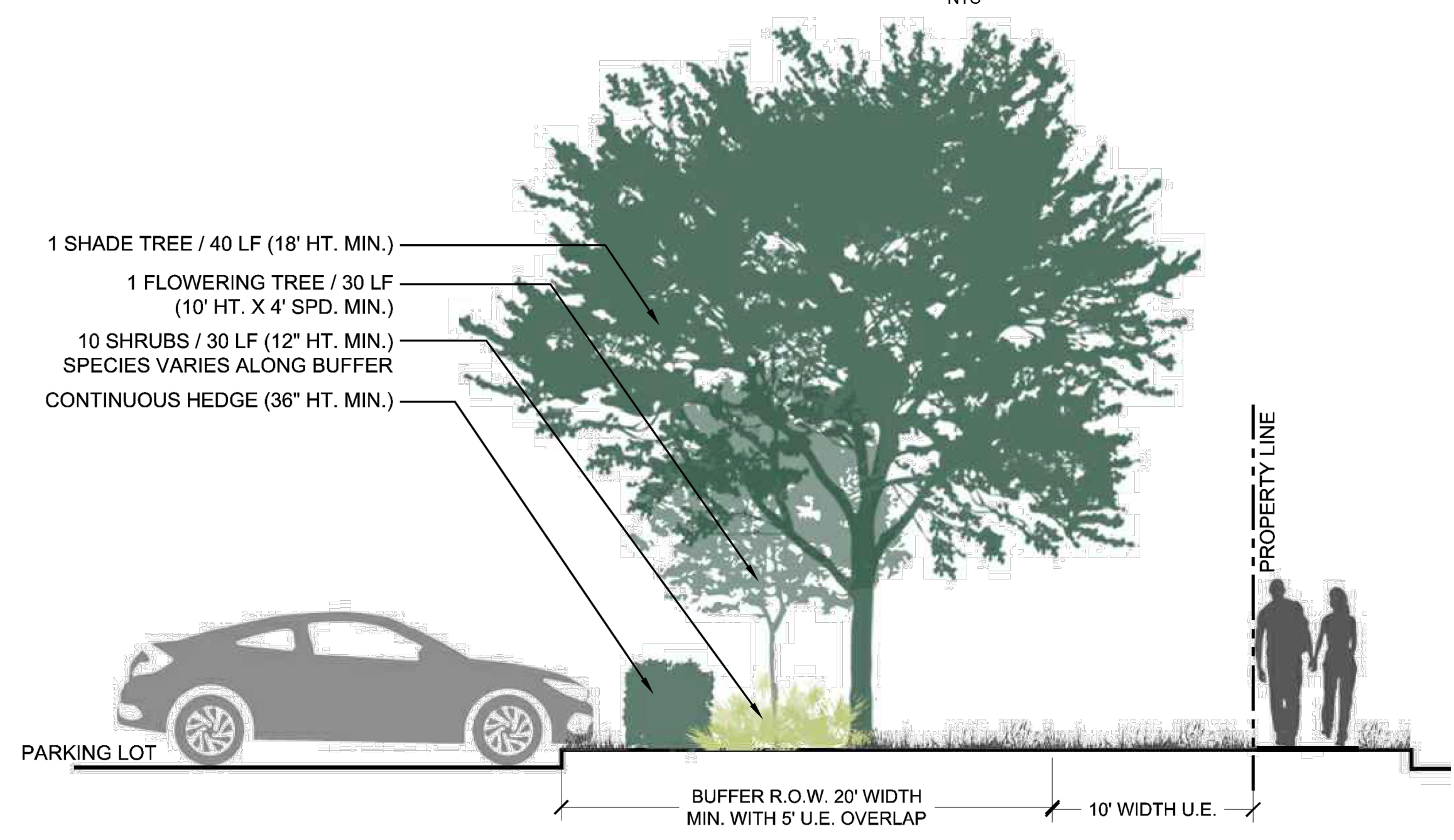
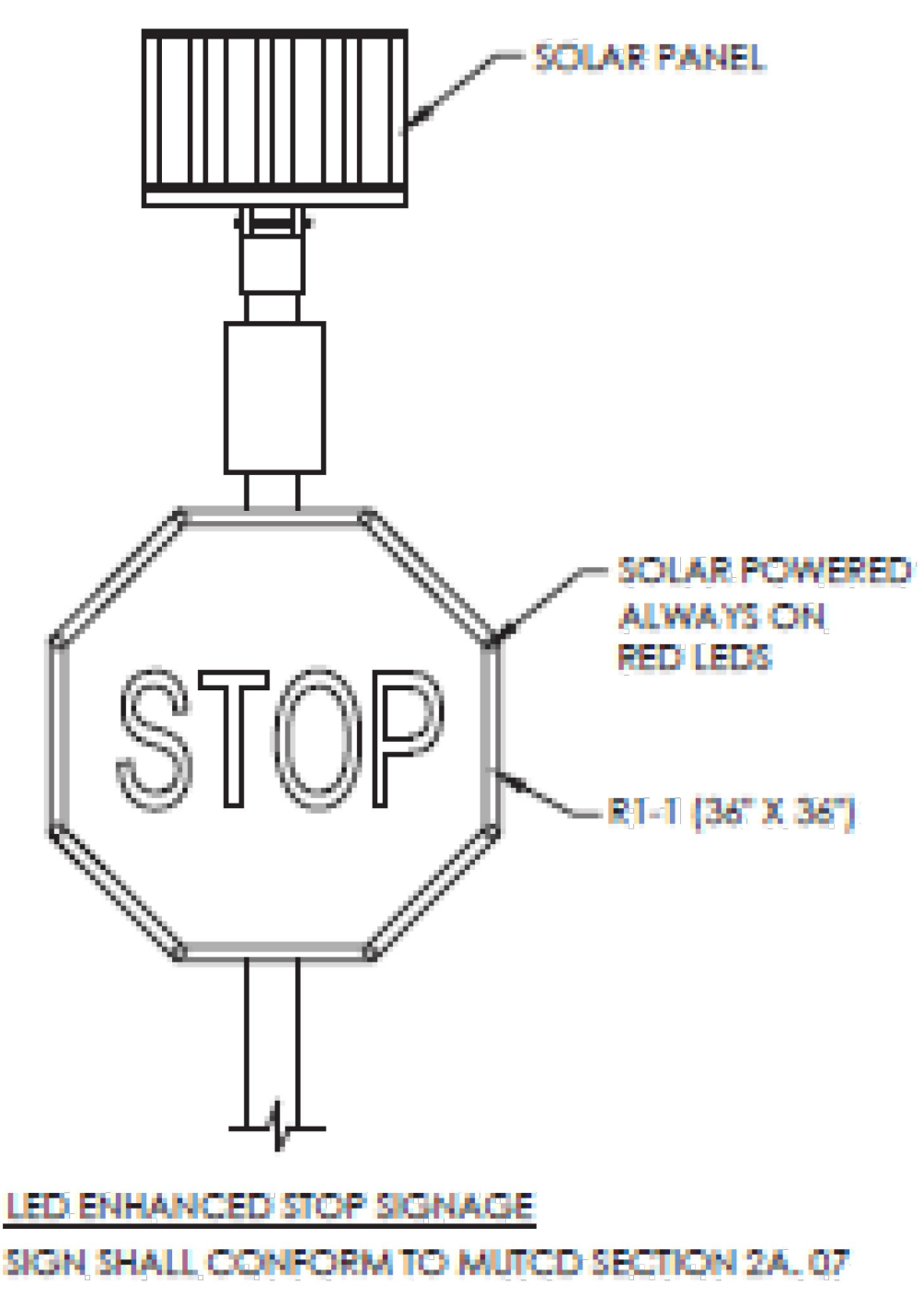
ENTRY DRIVE CROSS SECTION



B SECTION



CROSSWALK WITH ENHANCED LED STOP SIGNAGE DETAILS

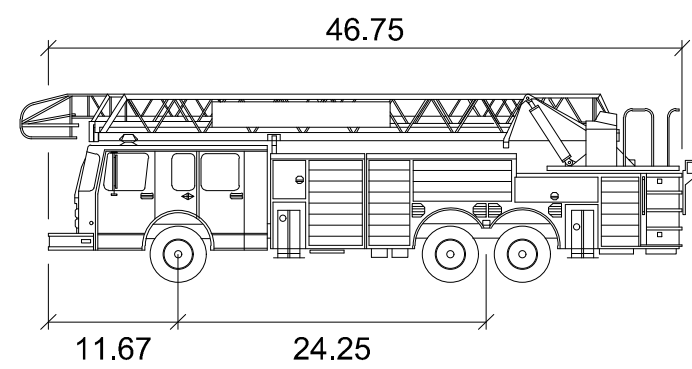


C SECTION

ZONING APPROVAL BOX

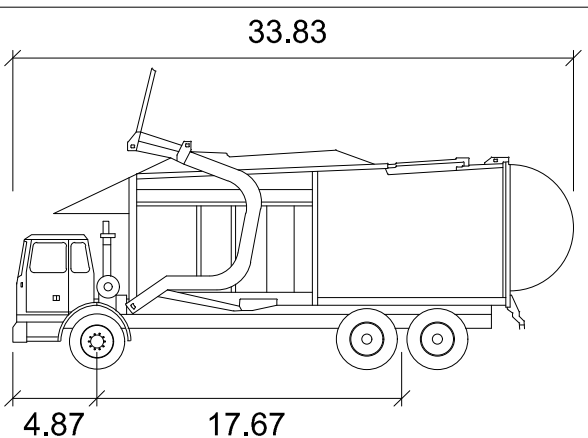
Date: May 2024
 Project No.: 22-046.001
 Designed By: JEV
 Drawn By: JEV
 Checked By: JB

Revision Dates:
 2024-05-15 Submittal
 2024-08-06 Resubmittal
 2024-10-25 Resubmittal



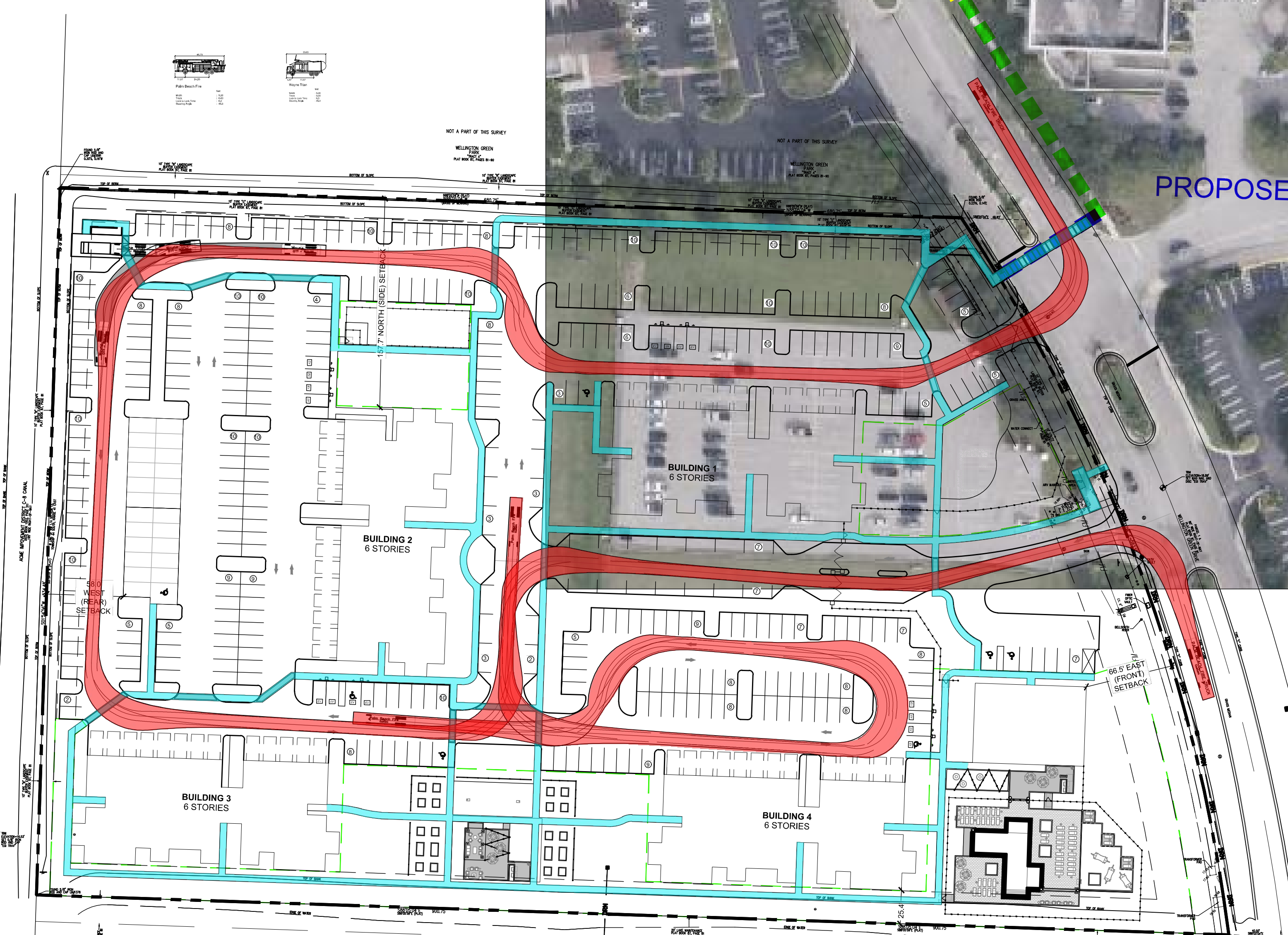
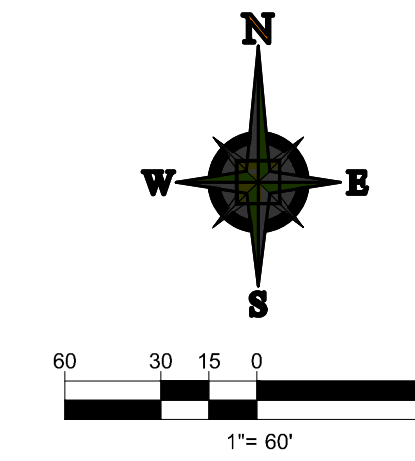
Palm Beach Fire

	feet
Width	: 9.00
Track	: 6.83
Lock to Lock Time	: 6.0
Steering Angle	: 45.0



Wayne Titan

	feet
Width	: 8.46
Track	: 8.00
Lock to Lock Time	: 6.0
Steering Angle	: 45.0



INDICATES MIN. 5' ADA ACCESSIBLE PATH

THOMAS
ENGINEERING GROUP

CIVIL ENGINEERS - PROJECT MANAGERS - LAND PLANNING - LANDSCAPE ARCHITECTS

4850 W. KENNEDY BLVD.
TAMPA, FL 33609
P: 813-375-1100

6300 NW 31ST AVENUE
TAMPA, FL 33609
P: 813-202-7000

REVISIONS			
REV.	DATE	COMMENT	BY

811 KNOW WHAT'S BELOW
ALWAYS CALL 811
BEFORE YOU DIG

It's fast. It's free. It's the law.

www.callsunshine.com

PROJECT No.:	FJ180003.03
DRAWN BY:	JMG
CHECKED BY:	JMG
DATE:	10/7/2024
CAD I.D.:	FJ240014-CIRCULATION-PLAN

PROJECT:
WELLINGTON GREEN PARK TRACT

FOR
BAINBRIDGE

VILLAGE OF WELLINGTON
FLORIDA

THOMAS
ENGINEERING GROUP

840 SE OSCEOLA ST.
STUART, FL 34994
PH: (772) 888-3138

www.ThomasEngineeringGroup.com

JASON M. GUNTHER
No. 58529

PROFESSIONAL ENGINEER
October 16, 2024
FLORIDA LICENSE NO. 60824
FLORIDA BUSINESS REGISTRATION NO. 27528

SHEET TITLE:
CIRCULATION PLAN

SHEET NUMBER:
CP-01

Printed on Wednesday, October 16, 2024, 2:07 PM by Jason Gunther
Wellington Green Park Tract - Circulation Plan - CP-01 - 10/16/2024 - 2:07 PM