

Exhibit F - Lot 9 Updated Elevations and Materials



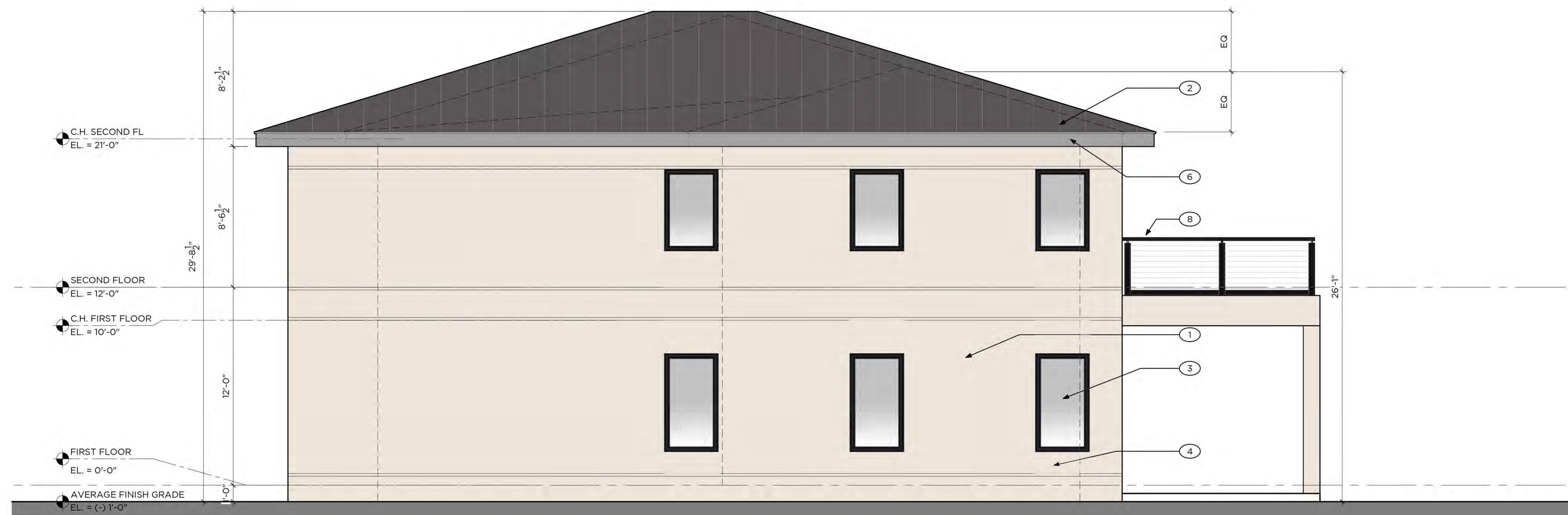
1 FRONT ELEVATION

1/4"=1'-0"

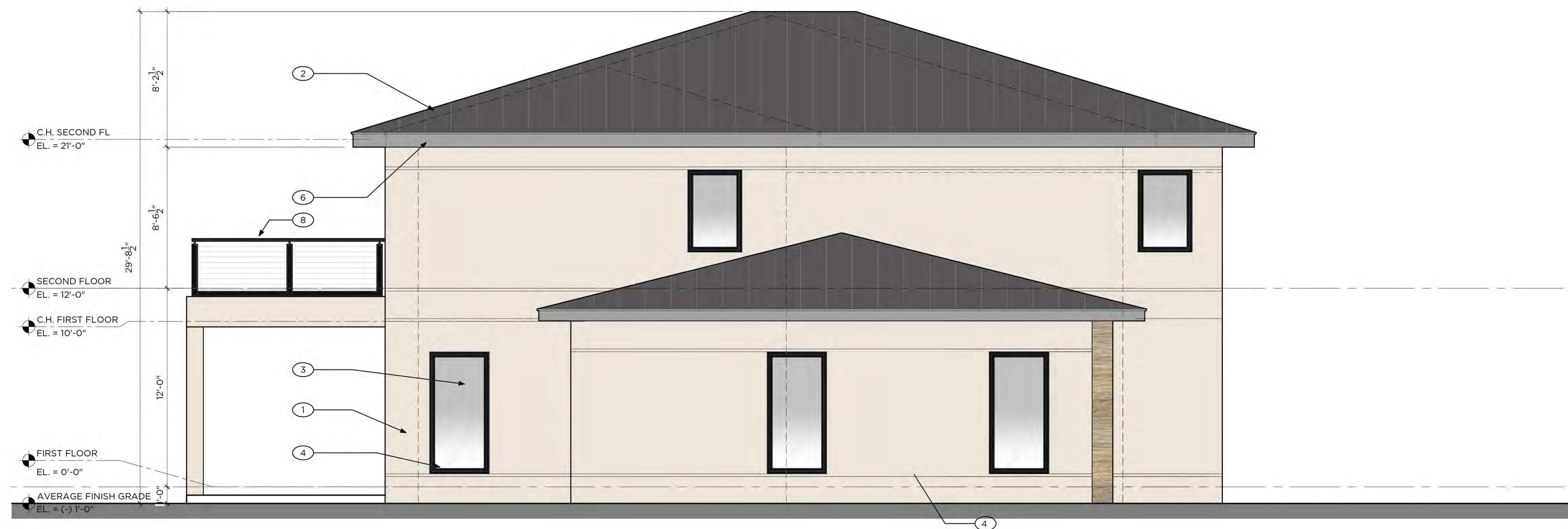


2 REAR ELEVATION

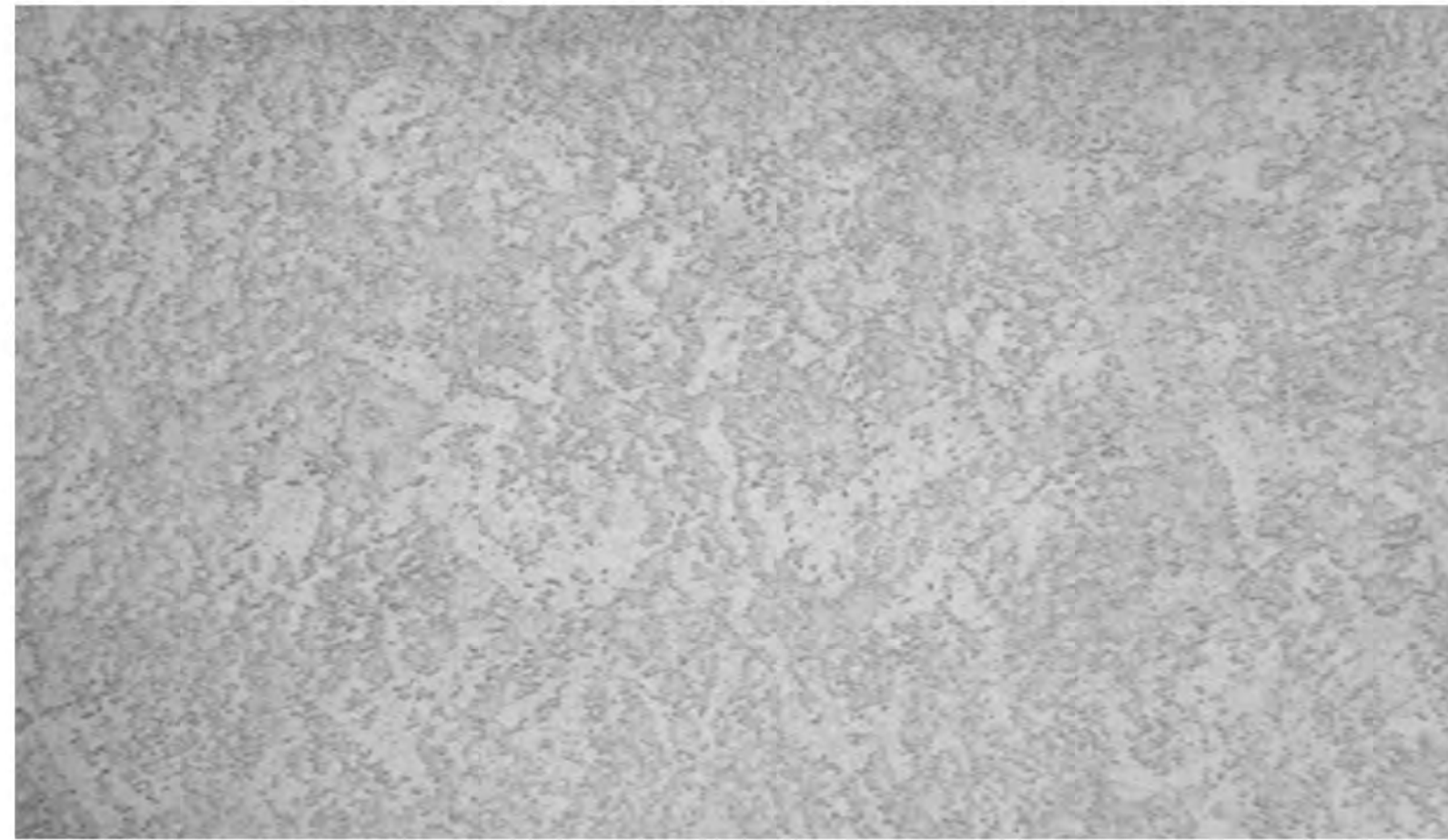
1/4"=1'-0"



1 SIDE ELEVATION 1/4"=1'-0"



2 GARAGE SIDE ELEVATION 1/4"=1'-0"



3 COAT STUCCO VENEER
LACE FINISH W/ VERTICAL AND HORIZONTAL
SCORING



WARM WHITE PAINT



STANDING SEAM METAL ROOF



SLATE GRAY FINISH



METAL FRAME HURRICANE RATED WINDOW
SYSTEM



MATTE BLACK FRAME FINISH



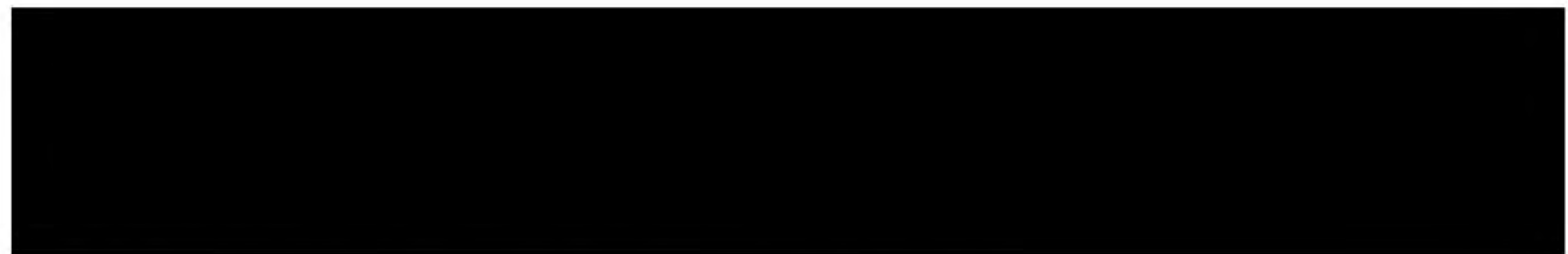
NICKEL GAP PATTERN



LIGHT OAK WOOD TILE



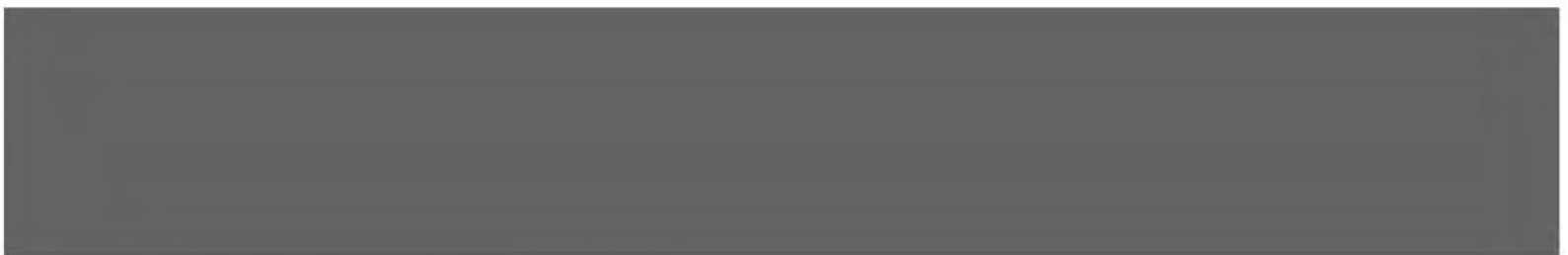
HURRICANE-RATED O.H. GLASS GARAGE
DOOR



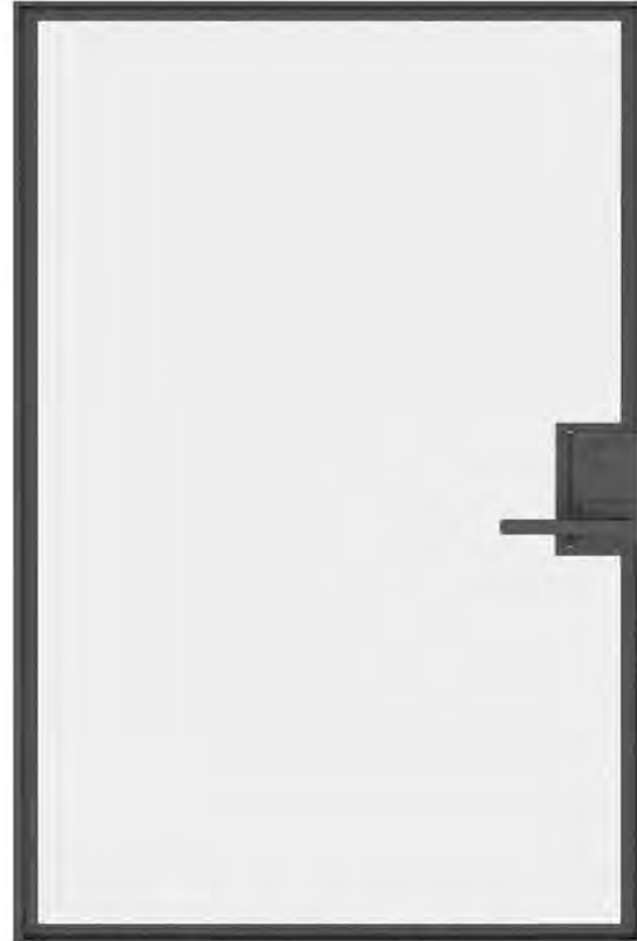
MATTE BLACK FRAME FINISH
FROSTED GLASS PANEL



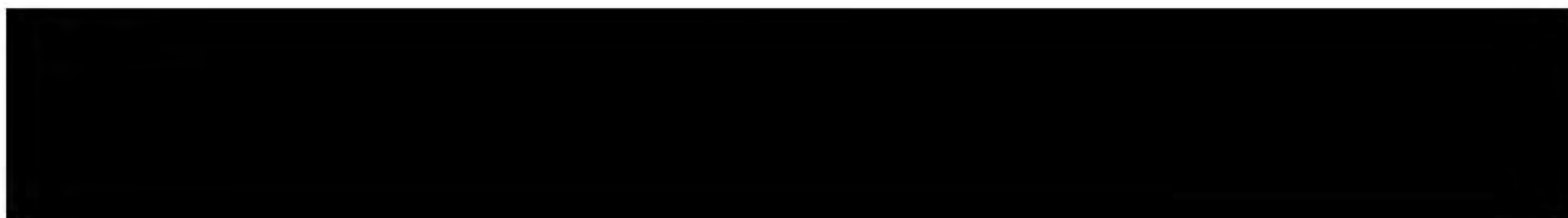
PRE FINISHED METAL CLADDING



SLATE GRAY FINISH



METAL FRAMED HURRICANE RATED DOOR AND WINDOW SYSTEM

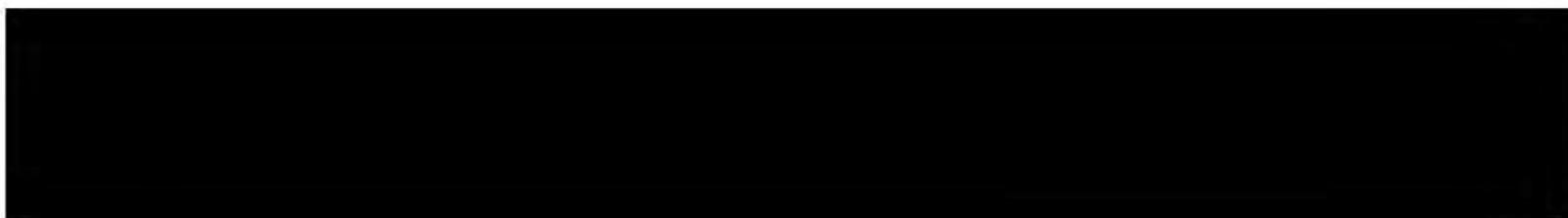


MATTE BLACK FRAME FINISH

7



MATTE BLACK CABLE RAIL SYSTEM



MATTE BLACK FINISH

8



MATTE BLACK METAL FRAMED HURRICANE RATED DOOR SYSTEM



MATTE BLACK FRAME FINISH

9





1 SIDE ELEVATION

1/4"=1'-0"



2 GARAGE SIDE ELEVATION

1/4"=1'-0"



GRANOFF ARCHITECTS

330 RAILROAD AVENUE
GREENWICH, CT 06830

203.625.9460

WWW.GRANOFFARCHITECTS.COM

FARRELL WELLINGTON ESTATES WEST

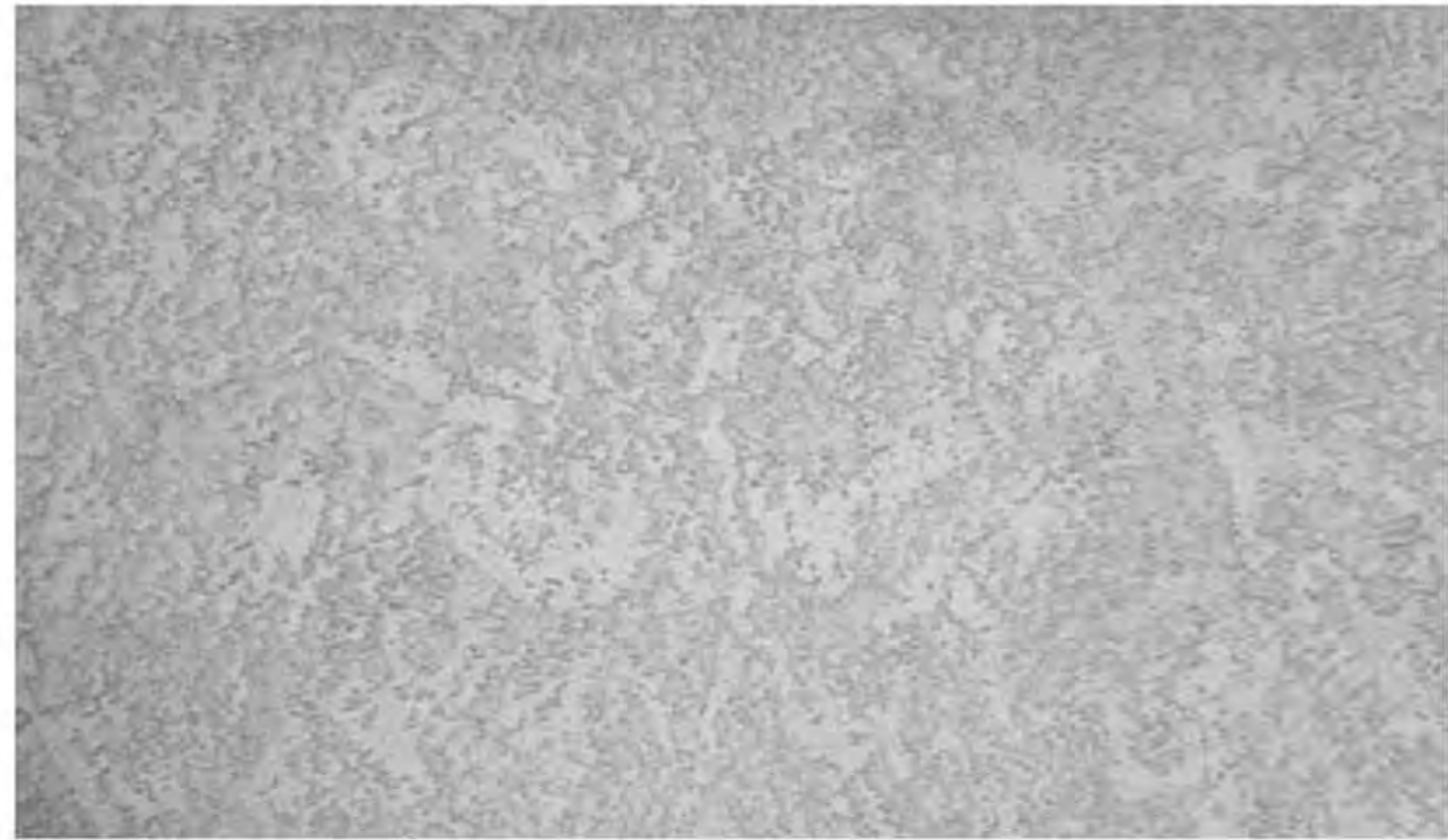
FLORIDA

DATE: 07/26/2023

DRAWING NO.:

MODEL 5

© 2022 GRANOFF ARCHITECTS
These drawings, concepts, designs and ideas are the property of R.S. Granoff Architects, P.C. They may not be copied, reproduced, disclosed to others, or used in connection with any work other than the specified project for which they were prepared, in whole or in part, without prior written consent of R.S. Granoff Architects, P.C.



3 COAT STUCCO VENEER
LACE FINISH W/ VERTICAL AND HORIZONTAL
SCORING



WARM WHITE PAINT

1



3 COAT STUCCO VENEER
- SAND FINISH W/ VERTICAL SCORING



SLATE GRAY FINISH

2



METAL FRAME HURRICANE RATED WINDOW
SYSTEM



MATTE BLACK FRAME FINISH

3



NICKEL GAP COMPOSITE WOOD



LIGHT OAK SIDING/PANEL

4



HURRICANE-RATED O.H. GLASS GARAGE
DOOR



MATTE BLACK FRAME FINISH
FROSTED GLASS PANEL

5



METAL FRAMED HURRICANE RATED DOOR
AND WINDOW SYSTEM



SLATE GRAY FINISH

6



GRANOFF ARCHITECTS

330 RAILROAD AVENUE
GREENWICH, CT 06830

203.625.9460

WWW.GRANOFFARCHITECTS.COM

**FARRELL WELLINGTON
ESTATES WEST**

FLORIDA

DATE: 07/26/2023

DRAWING NO.:

MODEL 5

© 2022 GRANOFF ARCHITECTS
These drawings, concepts, designs and ideas are the property of Granoff Architects, P.C.
They may not be copied, reproduced, disclosed to others, or used in connection with any
work other than the specified project for which they were prepared, in whole or in part,
without prior written consent of Granoff Architects, P.C.



METAL FRAMED HURRICANE RATED DOOR
AND WINDOW SYSTEM



MATTE BLACK FRAME FINISH

7



TEMPERED GLASS RAIL SYSTEM
WITH ALUMINUM CAP



BRUSHED ALUMINUM FINISH

8



METAL FRAMED HURRICANE RATED HICKOY
CLAD DOOR SYSTEM



MATTE BLACK FRAME FINISH
LIGHT OAK PANEL

9

**FARRELL WELLINGTON
ESTATES WEST**

FLORIDA

DATE: 07/26/2023



GRANOFF ARCHITECTS

330 RAILROAD AVENUE
GREENWICH, CT 06830

203.625.9460

WWW.GRANOFFARCHITECTS.COM

DRAWING NO.:

MODEL 5

© 2022 GRANOFF ARCHITECTS
These drawings, concepts, designs and ideas are the property of Granoff Architects, P.C.
They may not be copied, reproduced, disclosed to others, or used in connection with any
work other than the specified project for which they were prepared, in whole or in part,
without prior written consent of Granoff Architects, P.C.