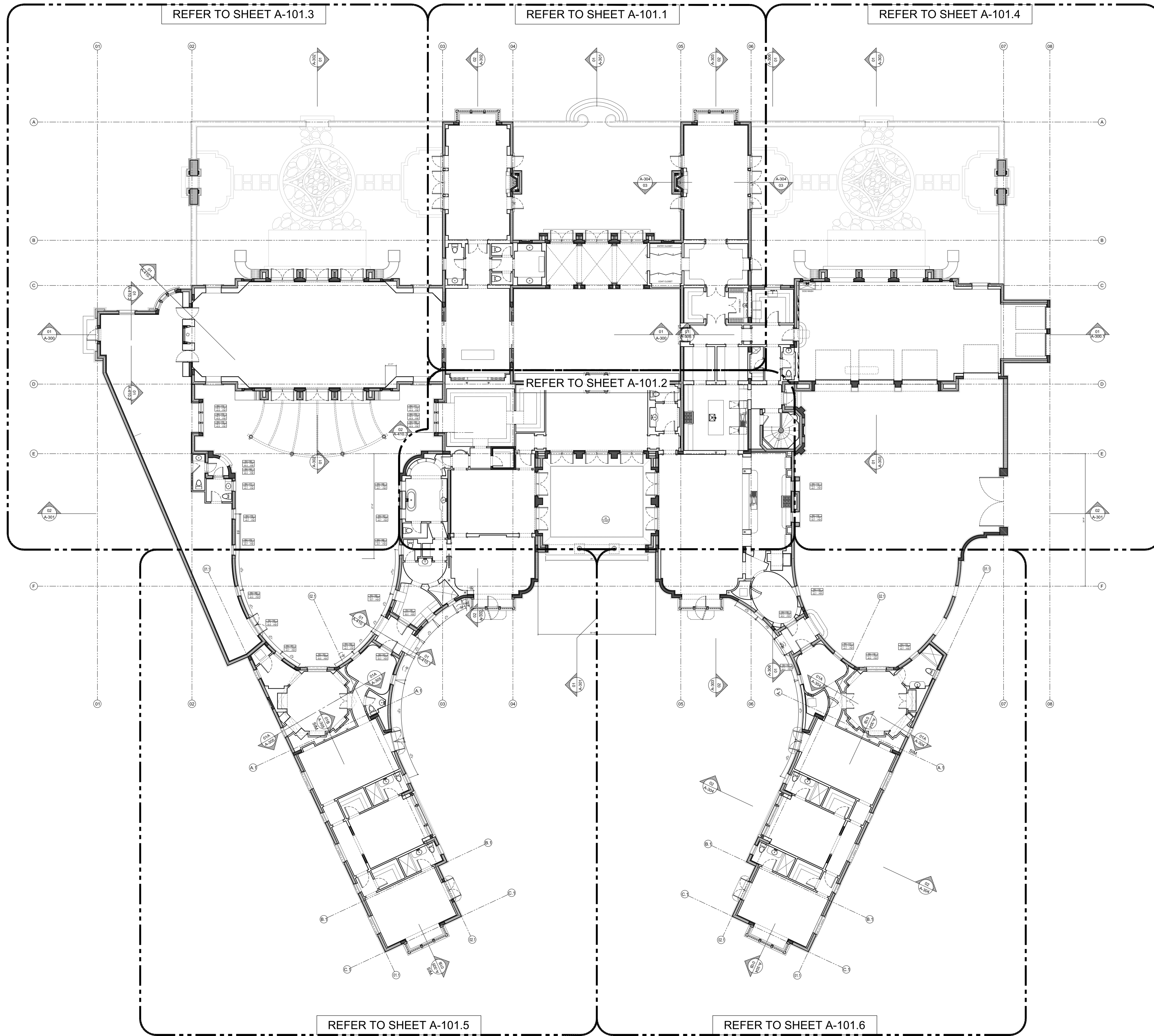


# Exhibit D - Proposed Floor Plan

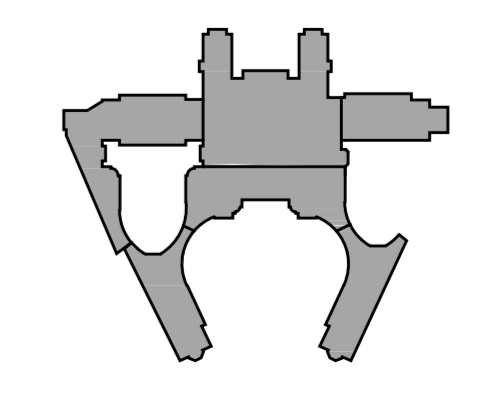
MAIN LEVEL TOP OF SLAB  
EL. 0'-0" = 17.5' N.A.V.D.

Digitally signed by Jose L. Gonzalez

Date: 2024.08.23 15:40:48 -04'00'



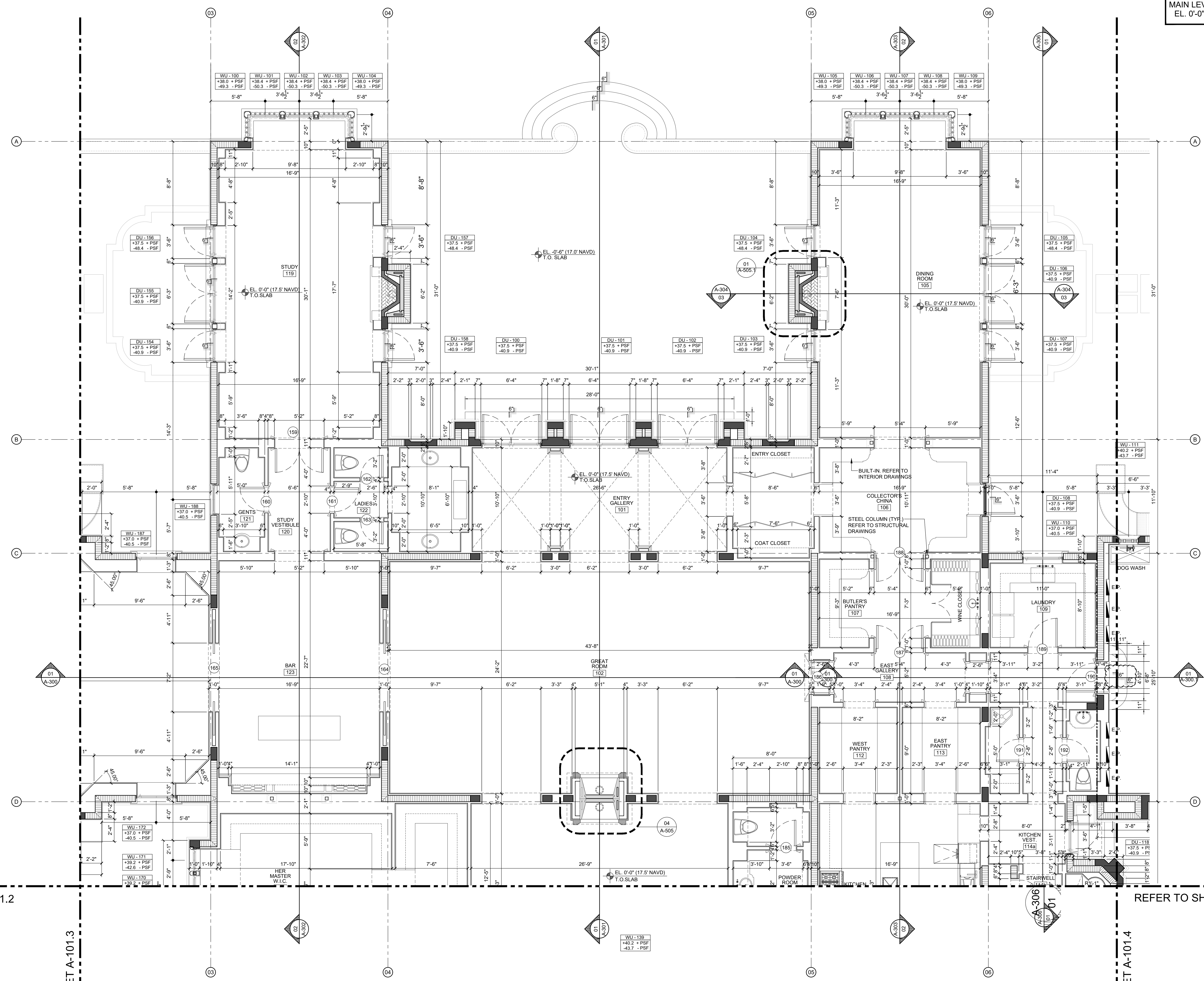
01 MAIN LEVEL REF. CEILING PLAN - OVERALL  
SCALE: 3/32" = 1'-0"



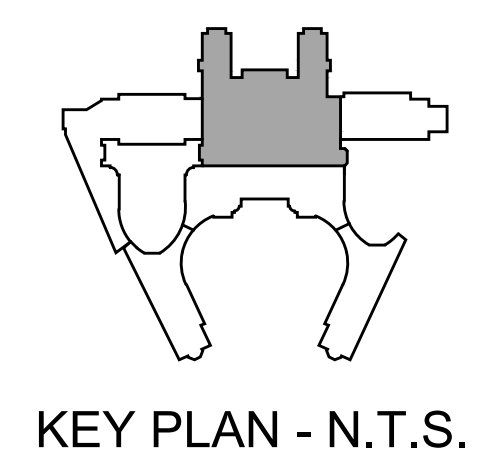
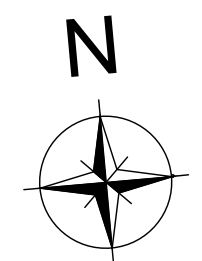
KEY PLAN - N.T.S.

ARCHITECTS <b>PORTUONDO PEROTTI ARCHITECTS, INC.</b> Architecture, Planning, Interior Design 5717 S.W. 88th Street, Miami, Florida, 33144, USA Tel: (305) 260-9331 Fax: (305) 260-9318 <a href="http://www.portuondo-perotti.com">http://www.portuondo-perotti.com</a>	
OWNER <b>FAR NIENTE STABLES VII LLC</b> 13808 FAIRLANE COURT, WELLINGTON, FL 33414	
TITLE: <b>MAIN LEVEL FLOOR PLAN</b> OVERALL SCALE: 3/32" = 1'-0"	
SHEET <b>A-101.0</b> OF	
© COPYRIGHT 2009	
PROJECT NUMBER: 2022.04 DATE: 08/16/2024 DRAWN BY: CEG/OC/RL CHECKED BY: J.L.G.P.	REVISIONS
ISSUED FOR PERMIT - 08.16.2024	

MAIN LEVEL TOP OF SLAB  
EL. 0'-0" = 17.5' N.A.V.D.



01 MAIN LEVEL FLOOR PLAN - PARTIAL  
SCALE: 1/4" = 1'-0"



MATCHLINE  
REFER TO SHEET A-101.2

MATCHLINE  
REFER TO SHEET A-101.2

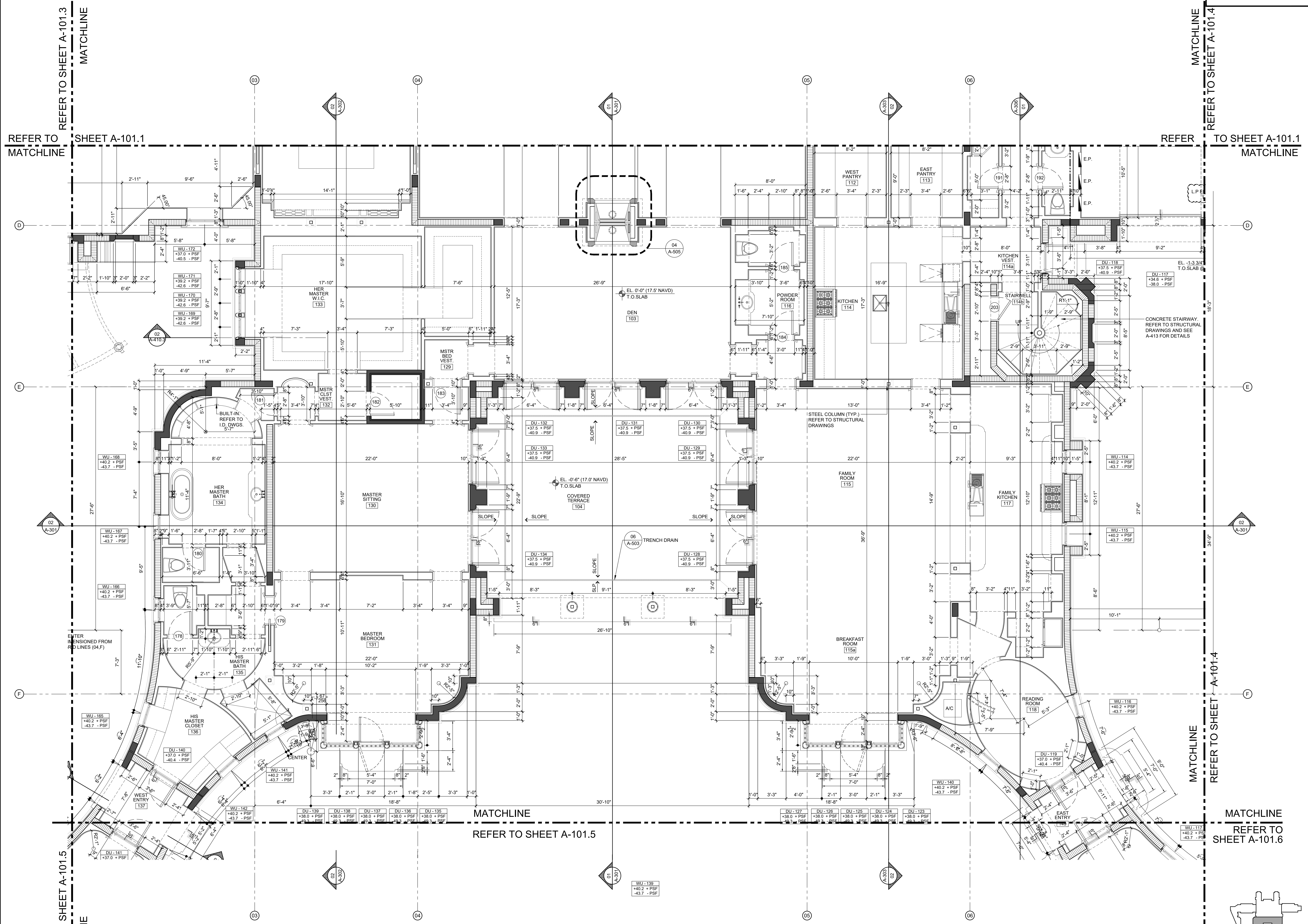
REFER TO SHEET A-101.3  
MATCHLINE

MATCHLINE  
REFER TO SHEET A-101.4

PROJECT NUMBER: 2022.04 DATE: 08/16/2024 DRAWN BY: CEGOC/CRL CHECKED BY: J.LGP
ARCHITECTS: PORTUONDO PEROTTI ARCHITECTS, INC. Architecture, Planning, Interior Design 5717 S.W. 88th Street, Miami, Florida, 33144, USA Tel: (305) 260-9331 Fax: (305) 260-9318 http://www.portuondo-perotti.com
OWNER: FAR NIENTE STABLES VII LLC 13808 FAIRLANE COURT, WELINGTON, FL 33414
TITLE: MAIN LEVEL FLOOR PLAN PARTIAL SCALE: 1/4" = 1'-0" SHEET: A-101.1 OF
REVISIONS: 2022.04 08/16/2024 CEGOC/CRL J.LGP
ISSUED FOR PERMIT - 08.16.2024 © COPYRIGHT 2009



MAIN LEVEL TOP OF SLAB  
EL. 0'-0" = 17.5' N.A.V.D.



REFER TO SHEET A-101.3  
MATCHLINE

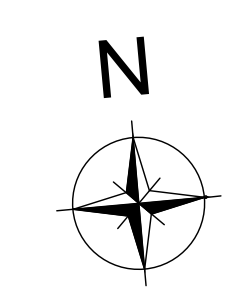
REFER TO SHEET A-101.1  
MATCHLINE

REFER TO SHEET A-101.4  
MATCHLINE

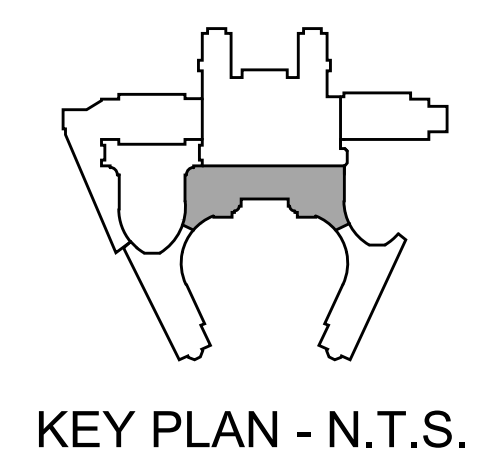
REFER TO SHEET A-101.4  
MATCHLINE

REFER TO SHEET A-101.5  
MATCHLINE

REFER TO SHEET A-101.6  
MATCHLINE



01 MAIN LEVEL FLOOR PLAN - PARTIAL  
SCALE: 1/4" = 1'-0"



KEY PLAN - N.T.S.

ISSUED FOR PERMIT - 08.16.2024

TITLE: MAIN LEVEL FLOOR PLAN  
PARTIAL  
SCALE: 1/4" = 1'-0"

SHEET: A-101.2  
OF

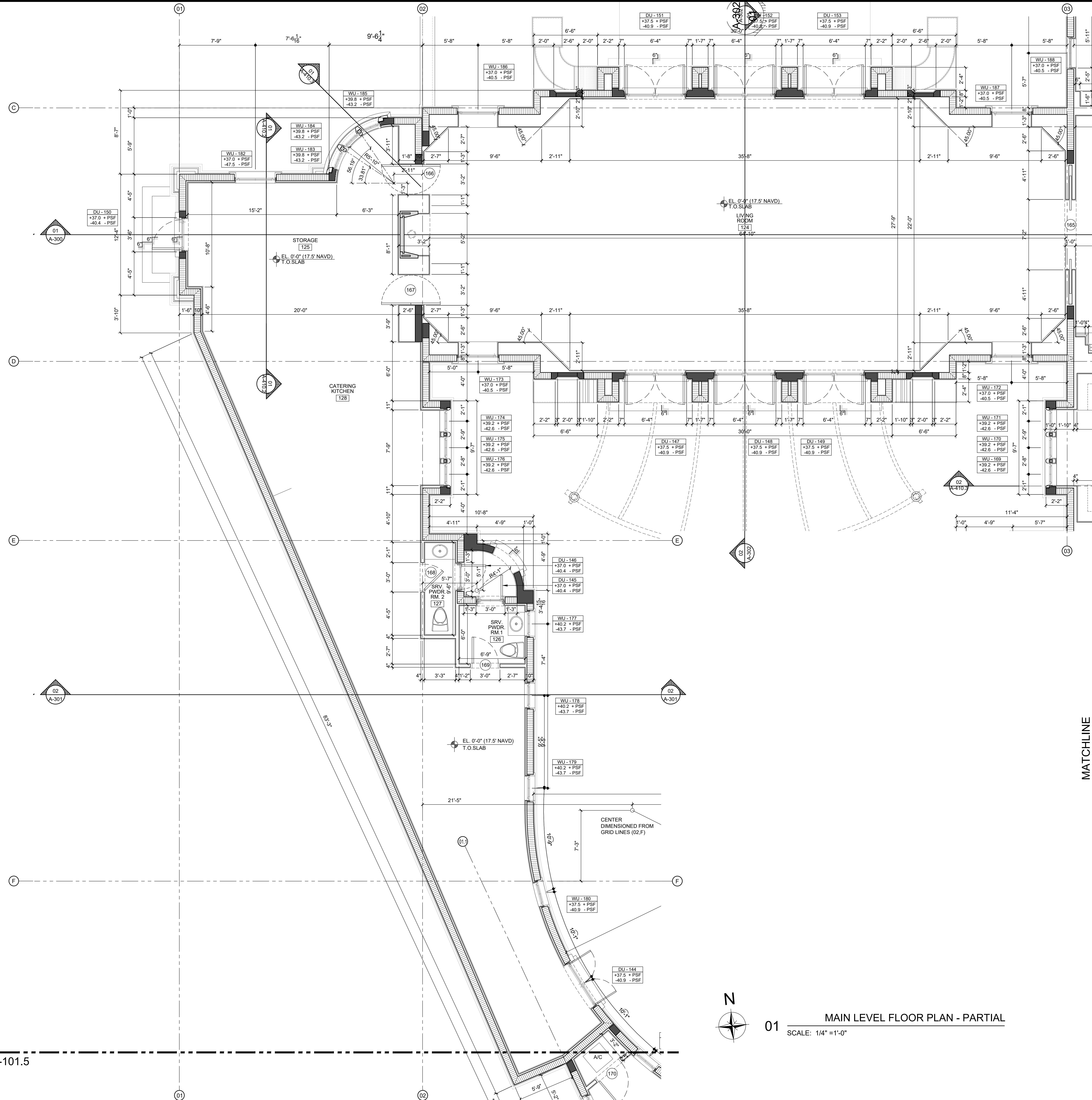
OWNER: FAR NIENTE STABLES VII LLC  
13808 FAIRLANE COURT, WELINGTON, FL 33414

ARCHITECTS: PORTUONDO PEROTTI ARCHITECTS, INC.  
Architecture, Planning, Interior Design  
5717 S.W. 8th Street, Miami, Florida, 33144, USA  
Tel: (305) 260-9331 Fax: (305) 260-9318  
http://www.portuondo-perotti.com

PROJECT NUMBER: 2022-04  
DATE: 08/16/2024  
DRAWN BY: CEGOCORL  
CHECKED BY: J.L.G.P.

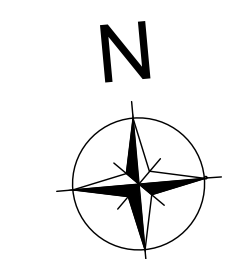
REVISIONS:

MAIN LEVEL TOP OF SLAB  
EL. 0'-0" = 17.5' N.A.V.D.

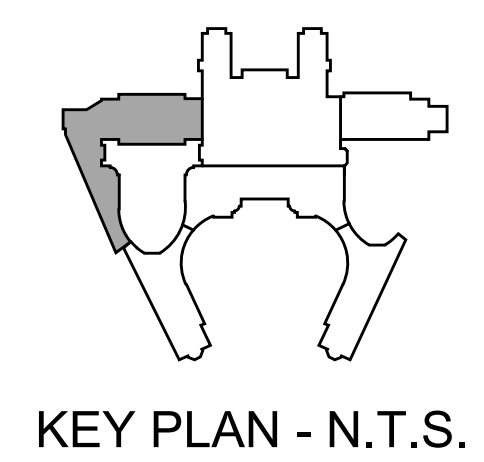


MATCHLINE  
REFER TO SHEET A-101.1

MATCHLINE  
REFER TO SHEET A-101.5



01 MAIN LEVEL FLOOR PLAN - PARTIAL  
SCALE: 1/4" = 1'-0"



KEY PLAN - N.T.S.

<p>PROJECT NUMBER: 2022-04 DATE: 08/16/2024 DRAWN BY: CE/COC/CR CHECKED BY: JL/CP</p>	<p>REVISIONS:</p>
<p>ARCHITECTS <b>PORTUONDO PEROTTI ARCHITECTS, INC.</b> Architecture, Planning, Interior Design 5717 S.W. 88th Street, Miami, Florida, 33144, USA Tel: (305) 260-9331 Fax: (305) 260-9318 http://www.portuondo-perotti.com</p>	
<p>OWNER <b>FAR NIENTE STABLES VII LLC</b> 13808 FAIRLANE COURT, WELINGTON, FL 33414</p>	
<p>TITLE: <b>MAIN LEVEL FLOOR PLAN</b> PARTIAL SCALE: 1/4" = 1'-0"</p>	
<p>SHEET <b>A-101.3</b> OF</p>	
<p>ISSUED FOR PERMIT - 08-16-2024</p>	

THE ABOVE FORMAT, TECHNIQUE AND DESIGN ARE THE PROPERTY OF PORTUONDO PEROTTI ARCHITECTS, INC. NO PART THEREOF SHALL BE COPIED, DISCLOSED TO OTHERS, OR USED WITHOUT THE WRITTEN CONSENT OF THE ARCHITECT.

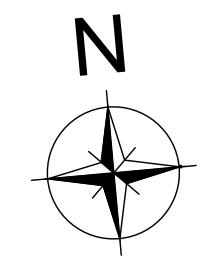
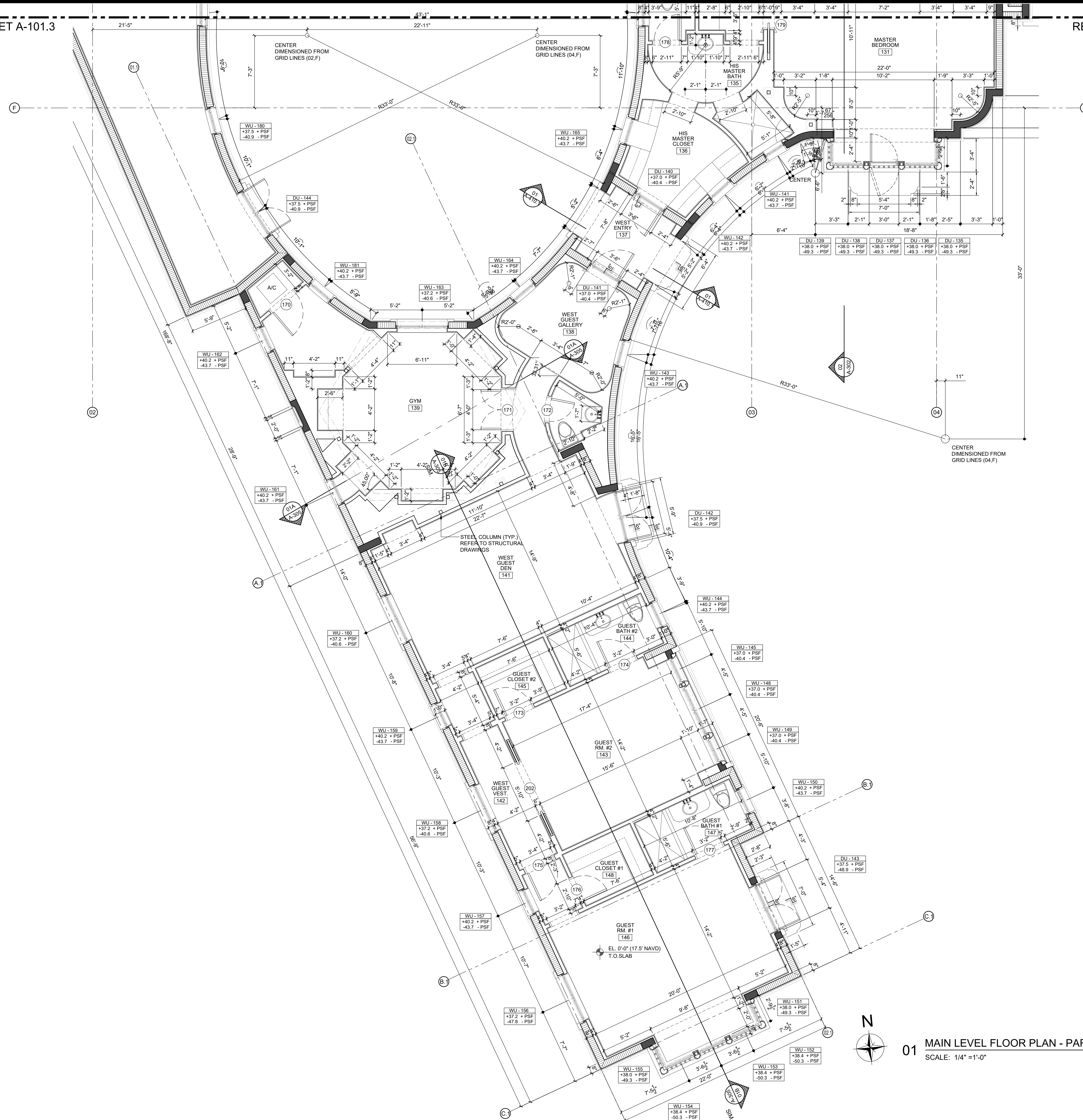




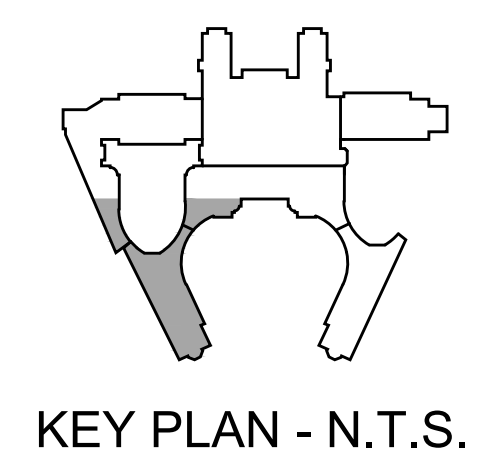
MATCHLINE  
REFER TO SHEET A-101.3

MATCHLINE  
REFER TO SHEET A-101.2

MAIN LEVEL TOP OF SLAB  
EL. 0'-0" = 17.5' N.A.V.D.



01 MAIN LEVEL FLOOR PLAN - PARTIAL  
SCALE: 1/4" = 1'-0"



KEY PLAN - N.T.S.

PROJECT NUMBER: 2022.04 DATE: 08/16/2024 DRAWN BY: CE/COC/CR/L CHECKED BY: J/LGP	REVISIONS: 08/16/2024 CE/COC/CR/L J/LGP
ARCHITECTS <b>PORTUONDO PEROTTI ARCHITECTS, INC.</b> Architecture, Planning, Interior Design 5717 S.W. 8th Street, Miami, Florida, 33144, USA Tel: (305) 260-9331 Fax: (305) 260-9318 <a href="http://www.portuondo-perotti.com">http://www.portuondo-perotti.com</a>	
OWNER <b>FAR NIENTE STABLES VII LLC</b> 13808 FAIRLANE COURT, WELLINGTON, FL 33414	
TITLE <b>MAIN LEVEL FLOOR PLAN</b> PARTIAL SCALE: 1/4" = 1'-0"	
SHEET <b>A-101.5</b> OF	
© COPYRIGHT © 2009	

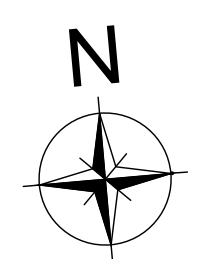
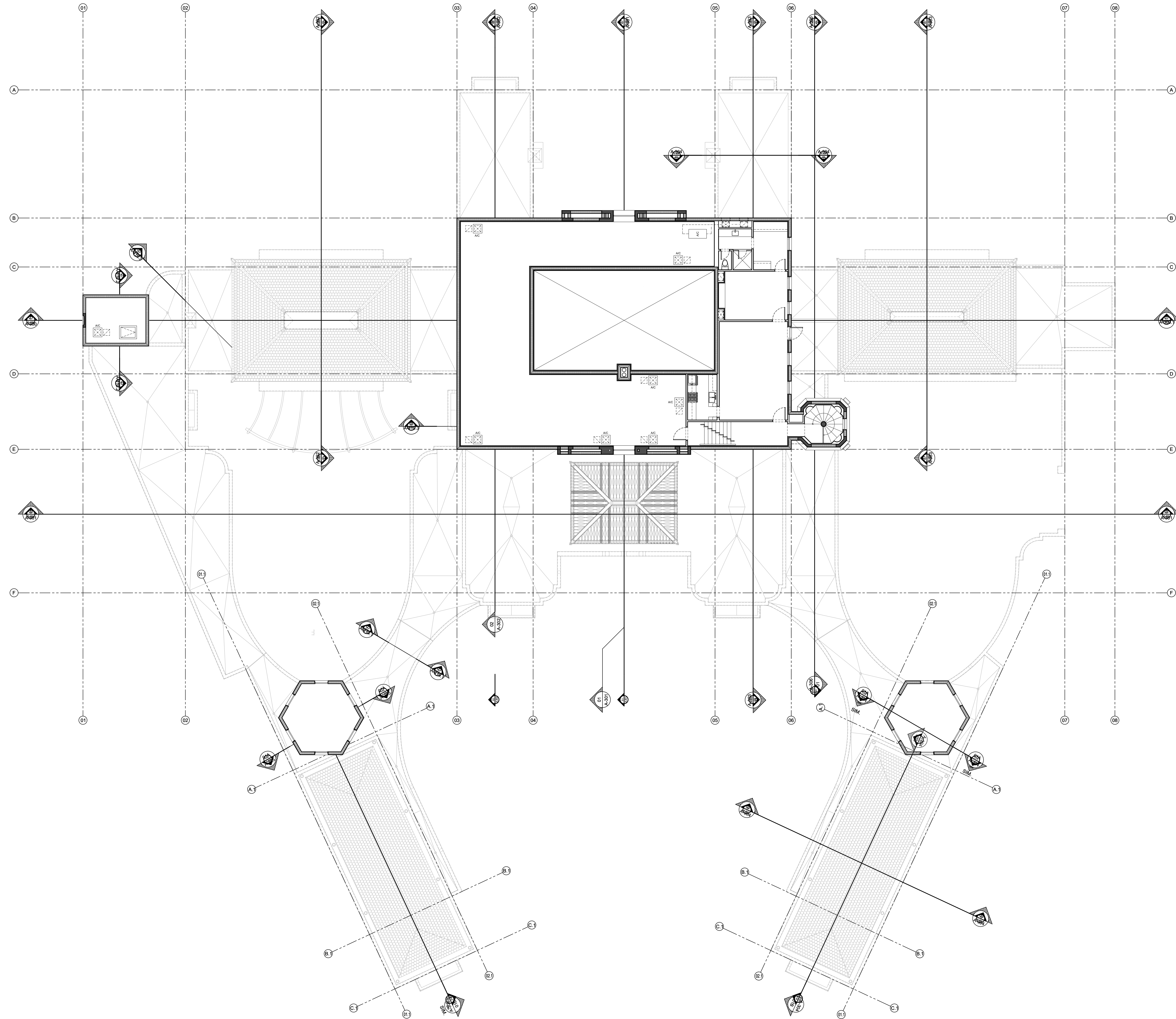
ISSUED FOR PERMIT - 08.16.2024

THE ABOVE FORMAT, TECHNIQUE AND DESIGN ARE THE PROPERTY OF PORTUONDO PEROTTI ARCHITECTS, INC. NO PART THEREOF SHALL BE COPIED, REPRODUCED OR TRANSMITTED IN ANY FORM OR BY ANY MEANS, WITHOUT THE WRITTEN CONSENT OF THE ARCHITECT.





MAIN LEVEL TOP OF SLAB  
EL. 0'-0" = 17.5' N.A.V.D.



01 UPPER LEVEL FLOOR PLAN - OVERALL  
SCALE: 3/32" = 1'-0"

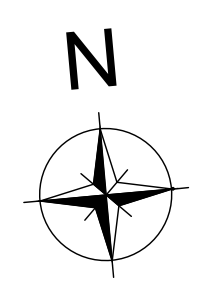
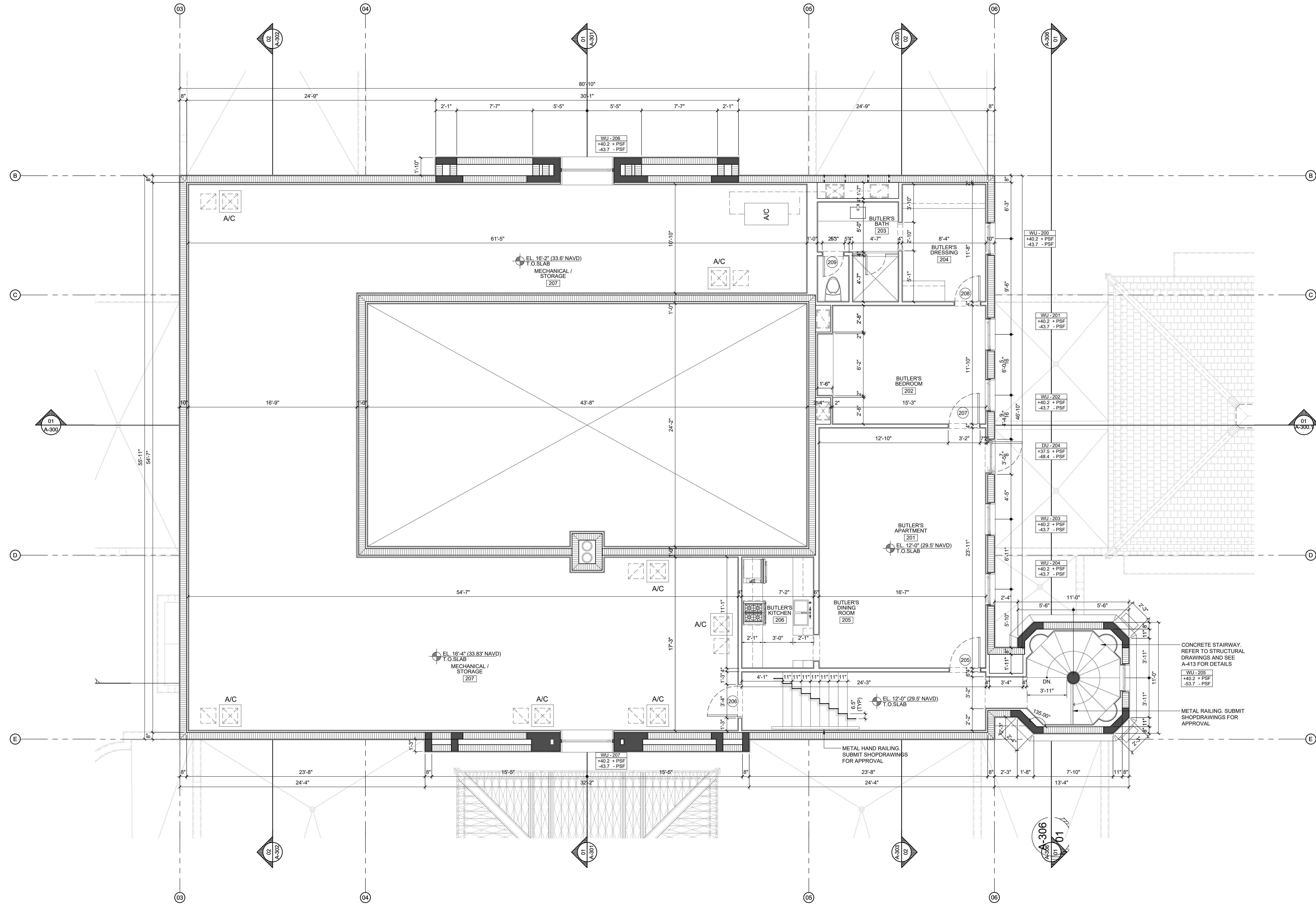
SHEET <b>A-102.0</b> OF	TITLE: UPPER LEVEL FLOOR PLAN OVERALL SCALE: 3/32" = 1'-0"	OWNER FAR NIENTE STABLES VII LLC 13808 FAIRLANE COURT, WELLINGTON, FL 33414	ARCHITECTS <b>PORTUONDO PEROTTI ARCHITECTS, INC.</b> Architecture, Planning, Interior Design 5717 S.W. 8th Street, Miami, Florida, 33144, USA Tel: (305) 260-9331 Fax: (305) 260-9318 http://www.portuondo-perotti.com	PROJECT NUMBER: 2022.04 DATE: 08/16/2024 DRAWN BY: CEGOCOCRL CHECKED BY: JLGP	REVISIONS: 08/16/2024 CEGOCOCRL JLGP
-------------------------------	---	---	---	--	---

ISSUED FOR PERMIT - 08-16-2024

THE ABOVE FORMAT, TECHNIQUE AND DESIGN ARE THE PROPERTY OF PORTUONDO PEROTTI ARCHITECTS, INC. NO PART THEREOF SHALL BE COPIED, REPRODUCED OR USED WITHOUT THE WRITTEN CONSENT OF THE ARCHITECT



MAIN LEVEL TOP OF SLAB  
EL. 0'-0" = 17.5' N.A.V.D.



01 UPPER LEVEL FLOOR PLAN - PARTIAL  
SCALE: 1/4" = 1'-0"

REVISIONS:

PROJECT NUMBER:	2022-04
DATE:	08/16/2024
DRAWN BY:	CEG/OC/RL
CHECKED BY:	JLGP

ARCHITECTS  
**PORTUONDO PEROTTI ARCHITECTS, INC.**  
Architecture, Planning, Interior Design  
5717 S.W. 88 Street, Miami, Florida, 33144, USA  
Tel: (305) 260-9331 - Fax: (305) 260-9318  
http://www.portuondo-perotti.com

**FAIRLANE COURT RESIDENCE**  
13808 FAIRLANE COURT  
WELLINGTON, FLORIDA

OWNER  
**FAR NIENTE STABLES VII LLC**  
13808 FAIRLANE COURT, WELLINGTON, FL 33414

TITLE:  
**UPPER LEVEL FLOOR PLAN  
PARTIAL**  
SCALE: 1/4" = 1'-0"

SHEET:  
**A-102.1**  
OF

ISSUED FOR PERMIT - 08-16-2024

THE ABOVE FORMAT, TECHNIQUE AND DESIGN ARE THE PROPERTY OF PORTUONDO PEROTTI ARCHITECTS, INC. NO PART THEREOF SHALL BE COPIED, REPRODUCED OR TRANSMITTED IN ANY FORM OR BY ANY MEANS, WITHOUT THE WRITTEN CONSENT OF THE ARCHITECT.