

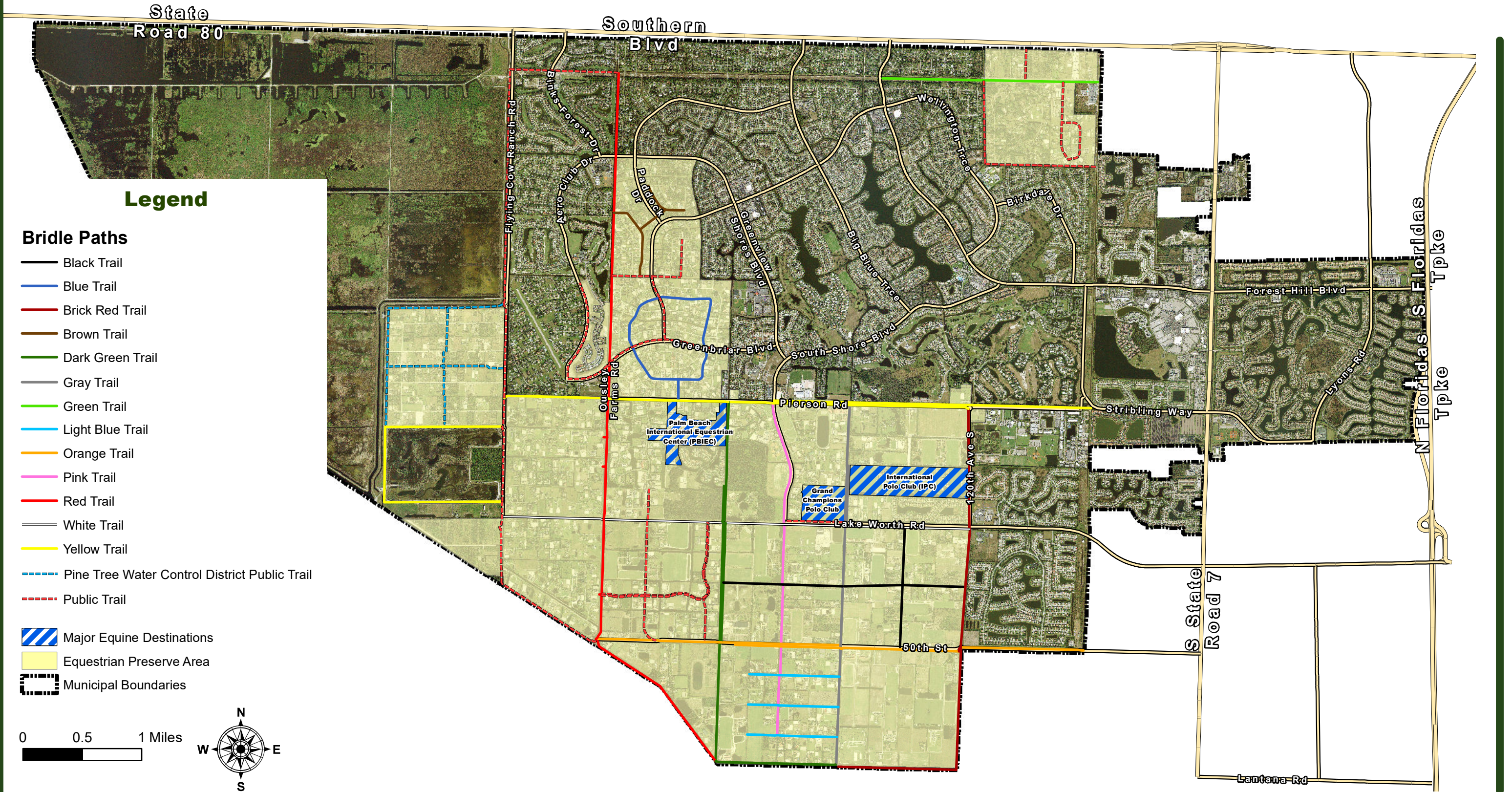


### Exhibit D - Proposed Bridle Path Map

# Wellington Comprehensive Plan 2023

## Equestrian Preserve Element

# Bridle Paths

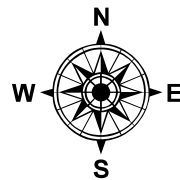


### Legend

#### Bridle Paths

- Black Trail
- Blue Trail
- Brick Red Trail
- Brown Trail
- Dark Green Trail
- Gray Trail
- Green Trail
- Light Blue Trail
- Orange Trail
- Pink Trail
- Red Trail
- White Trail
- Yellow Trail
- Pine Tree Water Control District Public Trail
- Public Trail
- Major Equine Destinations
- Equestrian Preserve Area
- Municipal Boundaries

0 0.5 1 Miles



### Goals, Objectives, & Policies (EQ-1)

Wellington Planning & Zoning • 12300 Forest Hill Blvd • Wellington, FL 33414  
• 561.791.4000 • www.wellingtonfl.gov