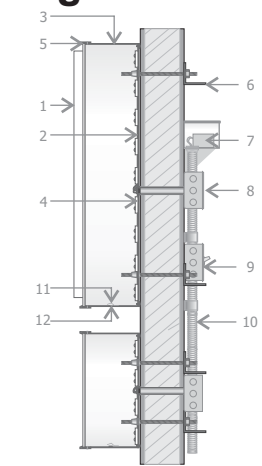
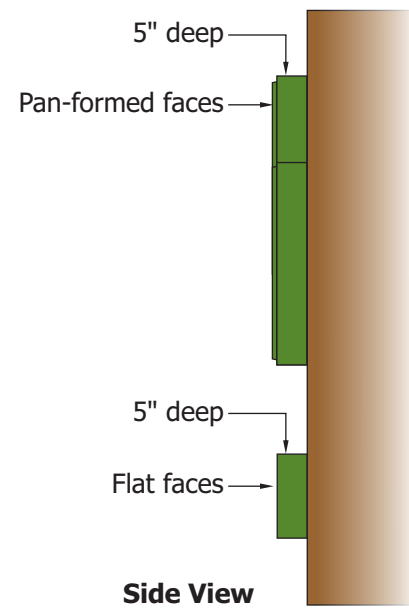


Exhibit H - Major Tenant Wall Sign



1	acrylic face
2	letter backs to be .125 aluminum
3	aluminum returns
4	illumination to be provided by LED.
5	1" trim cap
6	mounting varies upon location and wall material
7	power supply
8	junction box
9	listed disconnect switch
10	primary power source
11	weep hole cover to be white pre-finished aluminum
12	weep hole

ELECTRICAL NOTES

1. All materials and fasteners meet 3004.4
2. All electrical components are UL listed, labeled and approved.
3. Sign grounded according to NEC 6007.7
4. Signs manufactured and listed NEC 600.3 and marked per NEC 600.4.
5. All branch circuits per NEC 600 .5(B).1 or (B).2.
6. All Signs controlled by photocell or time clock per FBC 13-415. (ABC).1.4.
7. One visible 20 amp disconnect per sign per circuit per NEC 600.6(A).1

NOTE: These channel letters are flush mounted with remote power supplies.

NOTE: All smaller letters to have plastic "Bird Deterrent" inserts.

1 Scale: 3/8" = 1'-0"

Square Footage: **119.03 sq ft**

ACTION:

Manufacture and install new set of internally illuminated channel letters.

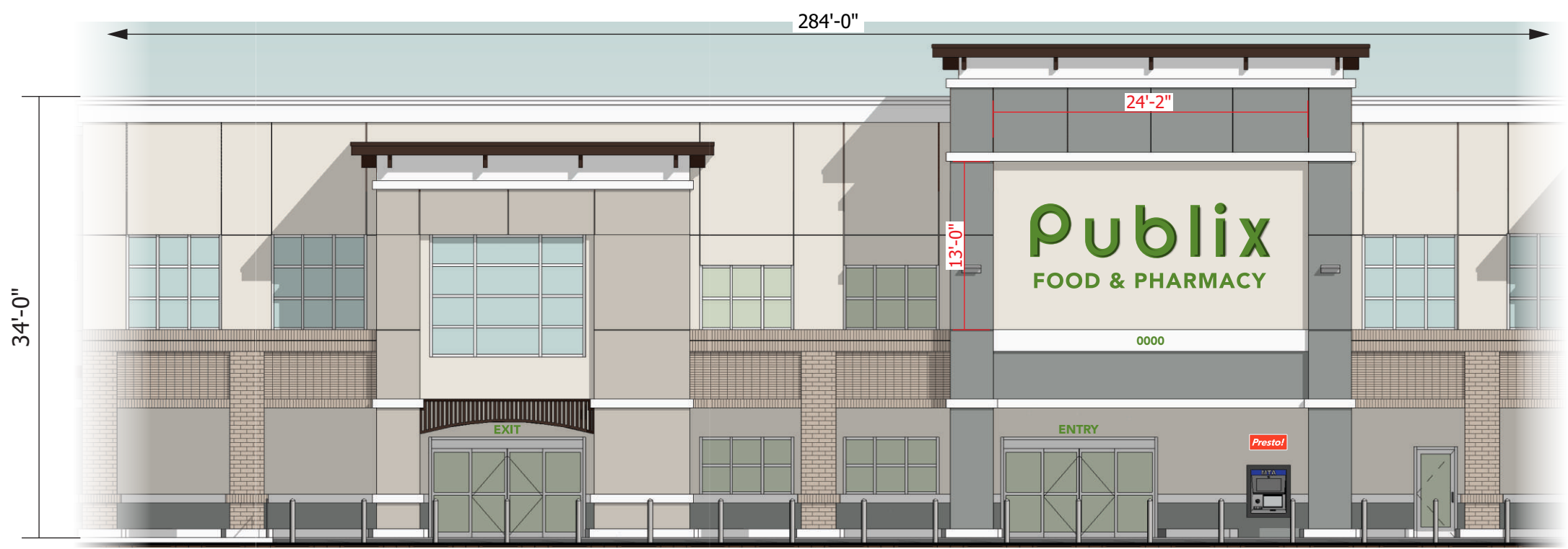
DESCRIPTION:

1. Letters are fabricated with .125 aluminum backs and painted (semi-gloss finish) with .063 aluminum returns @ 5" deep.
2. Letters are internally illuminated with energy efficient LED.
3. Letter faces are .177" SG Plus
4. "PUBLIX" Pan-Formed faces are secured with 1" Jewelite Trimcap
5. "F&P" Flat faces are secured with 1" Jewelite Trimcap

COLOR SCHEDULE:

- Aluminum Returns = Painted PMS 363 Green (semi-gloss)
- "PUBLIX" = 1" Jewelite Trimcap painted PMS 363 Green (semi-gloss)
- "F & P" = 1" Jewelite trimcap painted PMS 363 Green (semi-gloss)
- Acrylic Faces = .177 SG Plus PMS 363 Green
- GE LEDs = Green

CODE:
Max 2 sf per lf of principal storefront facade; NTE 150 sf per tenant. Major tenants NTE 66 inches in height. Sign length NTE the lesser of 70% of the store or 20 ft in length.



NORTH WEST ELEVATION
Scale: 3/32" = 1'-0"



National Headquarters: 1077 West Blue Heron Blvd.
West Palm Beach, Florida 33404
800.772.7932
www.atlasbtw.com

Revisions:		
3/18/22
...
...
...
...

S01

PM: Leana Z.	Address: SEC Wellington Trace
Drawn By: TD	City State: Wellington, FL
Date: 1/4/2022	Drawing Number: 115258-S01