



***Wellington: A Great Hometown!***



***Palm Beach County Sheriff's Office (PBSO)***  
***Village of Wellington***

***Law Enforcement Services Plan for FY 15***

**“TO MAKE WELLINGTON A SAFER PLACE TO LIVE”**

# **Table of Contents**

Page 1	Table of Contents
Page 2	Values & Mission Statement
Page 3	Introduction
Pages 3 – 4	Current Activities
Pages 4 – 12	Performance Measures
Pages 11-14	S.W.O.T.T. Analysis
Pages 14 – 15	Staff Deployment/ Conclusion
Page 16 - 19	FY 15Action Plans
Page 20	FY 15 Proposed Staffing Pattern
Page 21	Appendix
	Organizational Chart

# **Law Enforcement Services Plan** **PBSO District 8 Wellington FY 14**



## **Palm Beach County Sheriff's Office District 8 Wellington Vision Statement**

"To be the model contracted policing agency in the State of Florida"

## **Village of Wellington Vision Statement**

"Village of Wellington vision balances a unique hometown, family atmosphere with an attractive natural environment and recreational, cultural, and educational activities with facilities for all ages"

## **Palm Beach County Sheriff's Office District 8 Wellington Mission Statement**

"To provide the highest quality of law enforcement services to the citizens of Wellington"

- Community Policing and Problem Solving as a "District Philosophy"
- Develop our District 8 Deputy Sheriff's to their fullest potential
- The prevention and suppression of crime
- The pursuit and apprehension of law violators
- Proactively control traffic and reduce traffic crashes
- Fostering an atmosphere of fairness, professionalism, respect, and community service.

## **Village of Wellington Mission Statement**

Wellington is and should remain a unique Village composed of individual communities dedicated to the values of:

- Recreational and Cultural Opportunities
- Public Safety
- Environmental Respect
- Sound Government
- Civic Pride
- Community Appearance
- Equestrian Interests
- Education Excellence

"Providing excellent Law Enforcement Services to an Excellent Community"

## **Introduction:**

The Palm Beach County Sheriff's Office (PBSO) provides law enforcement services to the Village of Wellington (VOW) and functions as the Village's police department. PBSO has provided law enforcement services to the Village since its incorporation in 1996. The Village has grown substantially over the years and PBSO has grown along with the Village. The changes in law enforcement services are based upon ongoing review and analysis of several trends in the Village including, but not limited to: population growth, annexations, commercial expansion and special interest concerns (equestrian interests, *Safe Neighborhoods*).

Through the contractual agreement between the Palm Beach County Sheriff's Office (PBSO) and the Village of Wellington (VOW), performance measures have been agreed upon that establish general benchmarks to assess the quality of law enforcement services provided to the citizens of Wellington. The performance standards provide guidelines to evaluate current law enforcement activity and to direct future law enforcement planning. Key performance measures include response times, crime rates, clearance rates, and citizen satisfaction surveys.

The PBSO and the Village of Wellington are in the third year of a five (5) year contract. Typically, PBSO and the Village renew the Law Enforcement Services Agreement every five (5) years. The current five year agreement is the fourth such agreement between PBSO and the Village. A key element of the current agreement is the requirement for the PBSO to submit an annual *Law Enforcement Services Plan* wherein law enforcement trends in the Village are evaluated and goals and objectives for the next year are established.

In FY 14, the Village added a Detective Sergeant, Detective, and road patrol deputy to the sworn allocations in the contract. The added positions have been deployed to increase the "solvability rate" in property crimes and provide added traffic enforcement. No additional staff is being requested for FY 15.

## **Performance Standards – Contract Reference 2.3(B)(3)(5)**

### **Current Activity:**

Presently, District 8 is engaged in the following action plans that were established in the *Strategic Plan for FY 14*: Commercial Vehicle Enforcement (CMV), Traffic Safety, Property Crime prevention, and Public Preservation. Each plan has specific goals. The goals are as follows:

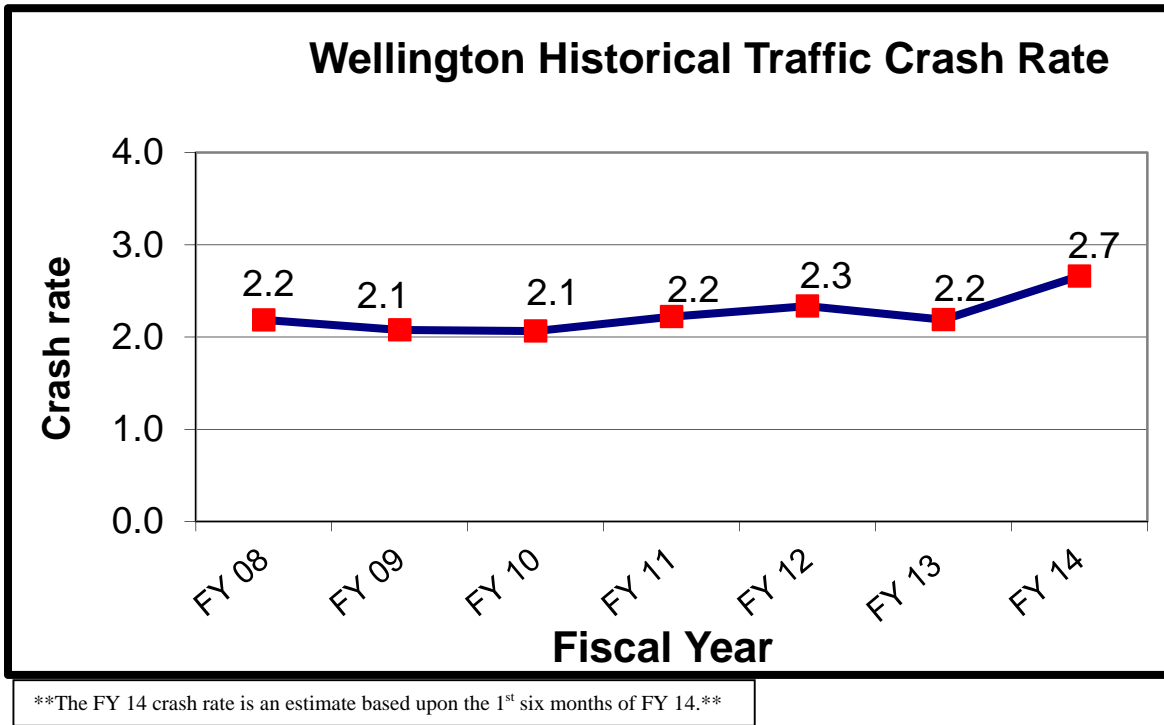
Commercial Vehicle Enforcement:	Provide (8) hours of CMV enforcement per month in FY 14
Traffic Safety:	Crash rate <2.2 crashes; # crashes per 100 residents
Property Crime:	<900 cases reported <u>and</u> 10% clearance rate.

Public Preservation:

Reduce vandalism and burglary at Village property

Commercial Vehicle (CMV) traffic through Wellington, specifically vehicles with more than six (6) wheels, is prohibited in Wellington by section 54 of Wellington's Code of Ordinances. CMV traffic is allowed if a delivery is being made within Wellington or other permissions are obtained. However, the use of Wellington roads as a "cut through" for CMV operators is strictly prohibited. Excessive CMV traffic damages roadway infrastructure over time. Wellington restricts CMV traffic through its borders in an effort to prolong the useful life of its roadway system. During FY 14, PBSO will ensure that its Commercial Vehicle Enforcement (CMV) unit provides at least eight (8) hours per month of CMV enforcement in Wellington. Enforcement activity discourages individuals from violating Wellington's ordinance.

Traffic Safety is an ongoing concern in the Village of Wellington. For FY 14, District 8 is striving to achieve a traffic crash rate of less than 2.2 traffic crashes per 100 Wellington residents. District 8 monitors traffic crash patterns on a daily basis and deploys selective traffic enforcement at areas where traffic crashes have been most frequent.



The chart above displays the traffic crash rate in Wellington from FY 08 through FY 14. Traffic crashes have increased during the first six (6) months of FY 14 and are up 16% compared to FY 13. District 8 is taking measures to bring the crash rate down and will be receiving more speed control devices this year to increase traffic enforcement. The initial review of crash data suggests that the increase in crashes is due to increased seasonal traffic in Wellington due largely to the Winter Equestrian season.

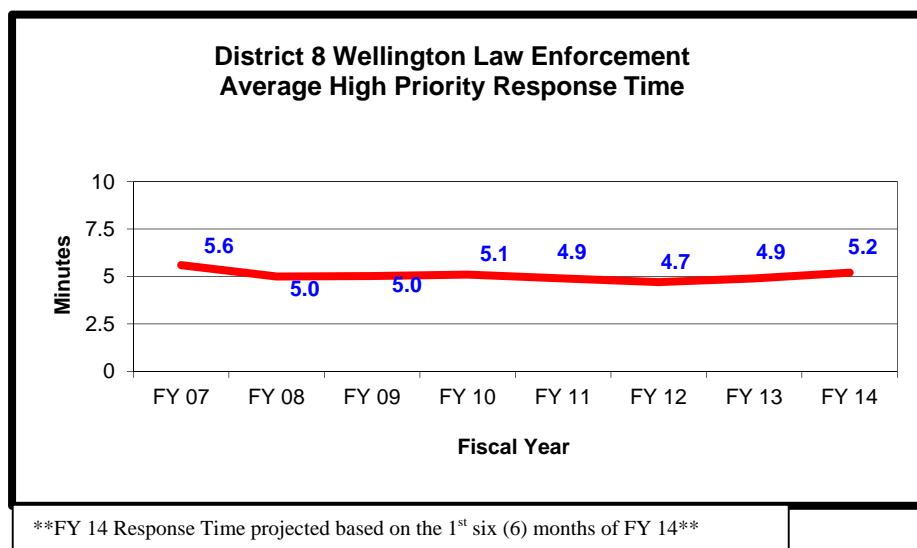
Property crime (burglaries and vandalism) are an ongoing concern in Wellington. Burglaries are down 9.1% in FY 14 compared to FY 13. Meanwhile, the clearance rate for burglaries in FY 14 is 12.1%. The Village added a Detective Sergeant and Detective position to the sworn allocations beginning in FY 14. The positions were added to increase the burglary clearance rate. The rise in the burglary clearance rate from 9.1% in FY 13 to 12.1% in FY 14 suggests that the staff expansion has been effective. It is noteworthy that vandalism cases are also down 12.8% in FY 14 vs. FY 13. District 8 will continue to thoroughly investigate burglaries to keep the burglary clearance rate above 10%.

Wellington is well known for its extraordinary park system and its commitment to well-maintained public spaces. To ensure that Wellington public places remain in the best possible condition, District 8 has made preservation of public spaces a primary focus in FY 14. For the first six (6) months of FY 14, there have been five (5) business burglaries and two (2) vandalism cases on Village property. District 8 will work with the Village to implement measures to prevent further damage to public places in Wellington.

### **Performance Standards – Contract Reference 2.3(B) (2):**

#### **Response Times:**

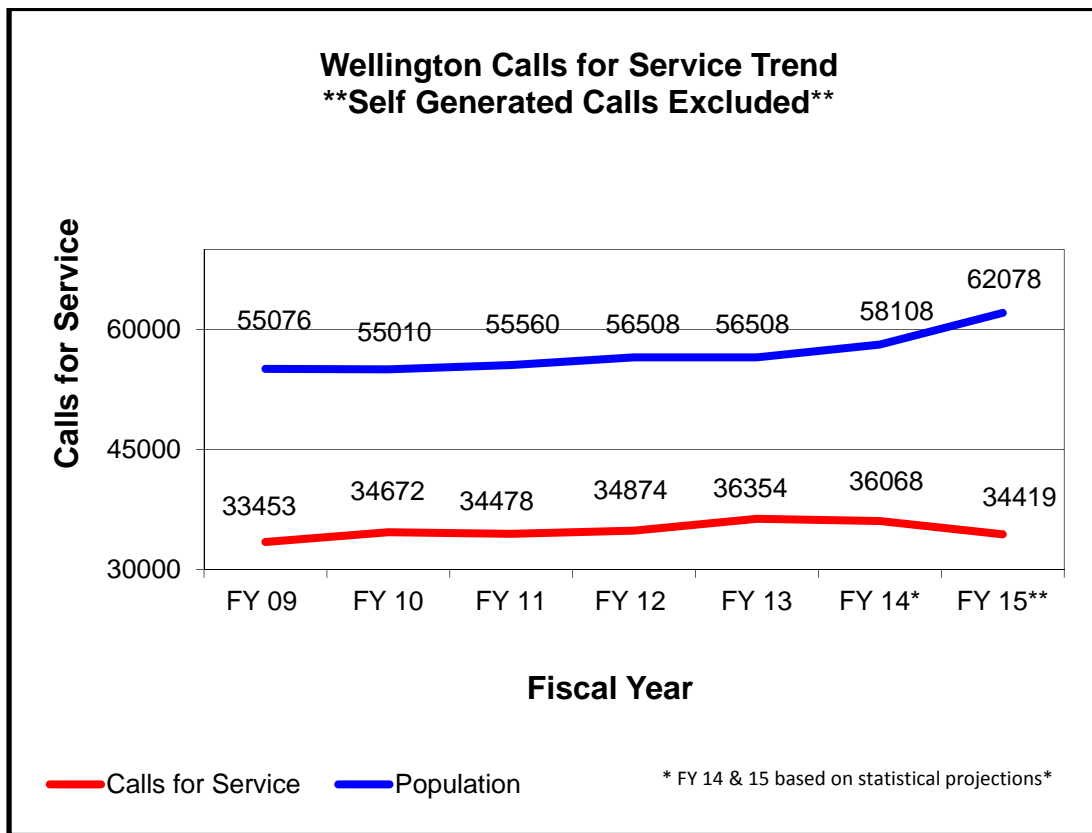
District 8 staff review high priority calls on a daily basis and log the response times for these calls. There are ten (10) different call classifications. Calls are classified by their seriousness or level of threat to either the deputy or the caller. For example, a person who is in immediate danger is a high priority call. Conversely, if a person comes home and discovers his home has been burglarized, but the burglar is nowhere to be found the call is not a high priority. Lower priority calls have much greater response times than high priority calls. The response time used by District 8 is defined as the time a deputy sheriff is dispatched to a call and the time he/she arrives at the scene of the call. The time from which the caller makes the call and the time it takes the dispatcher to dispatch the call is not counted. District 8 strives to maintain an average response time on high priority calls of *less than seven (7) minutes per call*.



The above chart describes the response time trend for high priority calls in District 8 Wellington from fiscal year 2007 through fiscal year 2014. Response times have always achieved the goal of *seven minutes or less*. Response times began trending upward during FY 06, but have declined steadily through FY 07, 08, and stabilized in FY 09 through FY 13. Response times have increased slightly during the first six (6) months of FY 14, but are still well below the standard of seven (7) minutes or less for a high priority call. Wellington agreed to expand the number of deputies assigned to District 8 when needed to ensure response times remain at an acceptable level, and the benefit of being appropriately staffed is reflected in the above response times.

### **Calls for Service:**

A key element in determining how many deputies are needed in Wellington is the calls for service to deputy ratio. The Village of Wellington uses the general guideline of 850 calls for service per year per deputy to determine the number of road patrol deputies needed.



The primary variable that produces law enforcement calls for service is the population followed by the perception the population has of law enforcement effectiveness. The number of citizen generated law enforcement calls for service has stabilized. The seasonal population growth impacts law enforcement.

Forty (40) deputies handle the total calls for service in the Village. Thus, the projected number of calls for service for FY 15 is 34,419, which corresponds to a projected (860) calls for service per road patrol/ motor deputy in FY 15. The projected number of calls for service per deputy is close enough to the guideline in use in Wellington of (850) calls for service per year per deputy. PBSO has sufficient resources to cover the projected number of calls for service. Other variables such as the crime rate, clearance rate, and citizen satisfaction remain stable indicating that existing resources are sufficient to cover the demand for law enforcement services.

### **Citizen Satisfaction:**

Citizen satisfaction with law enforcement services is an important component to consider when evaluating law enforcement in a community, because citizens who are more satisfied with their law enforcement service are more likely to contact law enforcement when necessary and to participate in public safety programs. PBSO District 8 Wellington has implemented an ongoing citizen satisfaction survey to gauge the level of satisfaction citizens have with the services PBSO provides. The satisfaction survey is a seven (7) question survey. Each question is ranked on a scale from 1 to 5. One (1) represents unacceptable and five (5) represents excellent. The satisfaction survey response rate for FY 13 is 10%. Meanwhile, average responses for the questions are as follows:

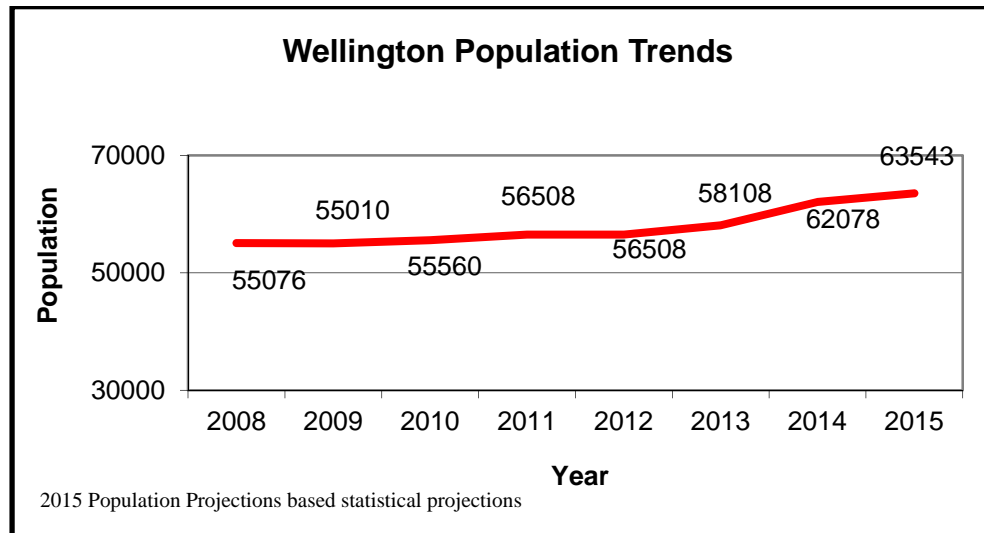
	<b><u>2011</u></b>	<b><u>2012</u></b>	<b><u>2013</u></b>
1) Was the Deputy professional?	4.81	4.81	4.77
2) Was the Deputy courteous?	4.90	4.83	4.77
3) Was the Deputy fair?	4.90	4.79	4.85
4) Did the Deputy listen to your concerns?	4.90	4.83	4.92
5) Did the Deputy answer your questions?	4.86	4.86	4.88
6) Were you satisfied with the response time?	4.90	4.83	4.88
7) Overall, how would you rate PBSO's service?	4.90	4.83	4.81
Overall average of responses:	4.88	4.80	4.84

The satisfaction level of the respondents continues to be very high. Favorable responses have been at 4.8 or higher from 2010 to 2013. The overall satisfaction rate of 4.84 translates into a 97% level of satisfaction. This survey is limited due to the low response rate.



## **Demographics:**

Wellington's population rose significantly from 2000 – 2005 (33%), but has stabilized in since 2006. Stable population corresponds to stable calls for service. Both law enforcement calls for service and the Village's population have leveled off in recent years.



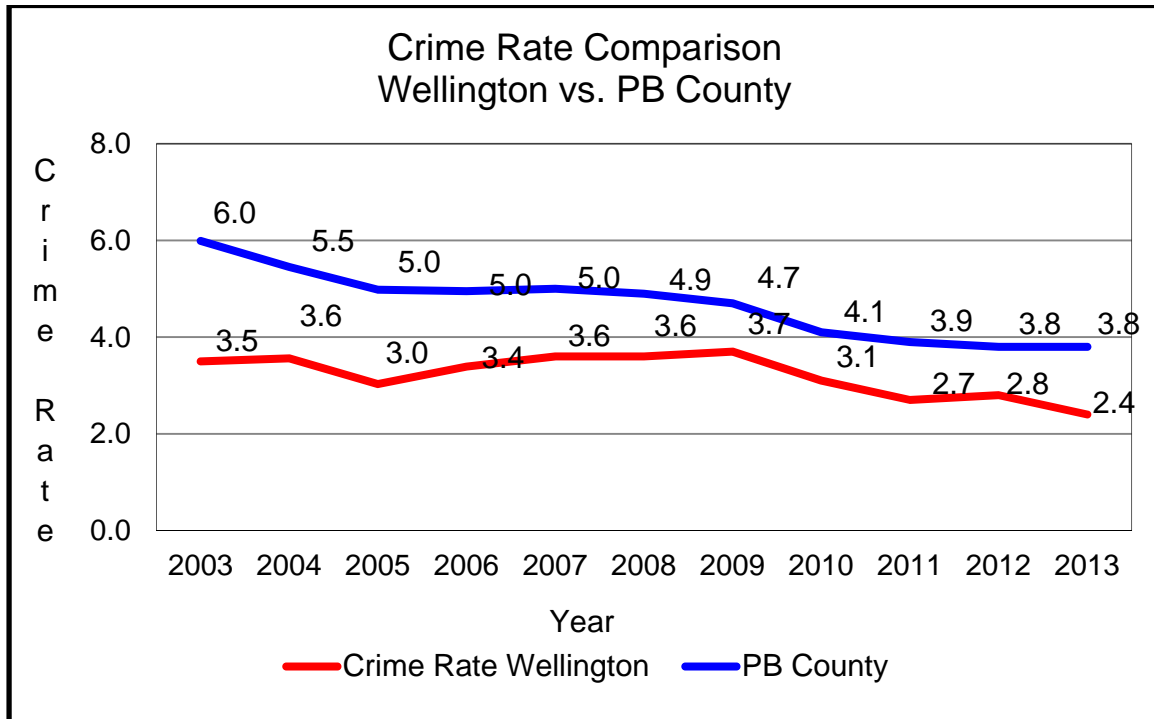
A major component on Wellington's demographic is the seasonal adjustment due to the Winter Equestrian Festival. Wellington's populations increases by 3,000 for the winter months, January to March.

According to U.S. Census data, Wellington's ethnic diversity is composed of 80% white, 10% Black, 4% Asian, 2% multi-racial, and 4% "other." It should be noted that "hispanic" is classified as either white or black depending upon the respondent's answer. 19% of Wellington's population is estimated as hispanic. Households in Wellington have an average estimated annual family income of \$78,268 and 8.1% of Wellington families are estimated to be living below the poverty line. Undoubtedly, the comparative affluence of Wellington residents contributes positively to public safety.

## **Crime Rate:**

The crime rate is published by the Florida Department of Law Enforcement in its *Annual County and Municipal Offense Data* report. The report is published annually in April or May. The report is based upon uniform crime reports as defined by the Federal Bureau of Investigation (FBI). The crime rate is a measure of the number of "Part 1" crimes per 100,000 persons in a given location. Part 1 crimes are: murder, robbery, forcible rape, aggravated assault, burglary, larceny, and motor vehicle theft. The crime rate measures a citizen's risk of being a victim in one of the listed Part 1 crimes. For example, Wellington's crime rate for 2013 is 2.4, meaning that a Wellington resident had a 2.4% chance of being the victim of a Part 1 crime in 2013 versus a 3.8% chance for all county residents. Since retail theft is included in the crime rate and most retail theft

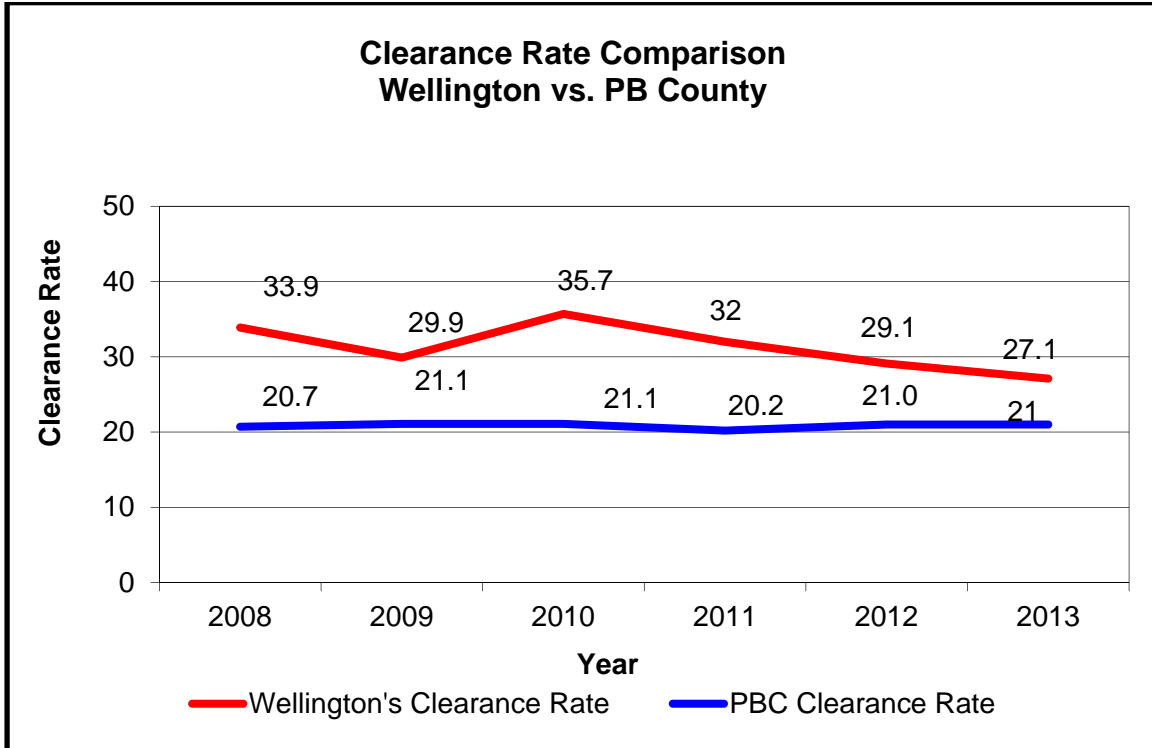
occurs at the Mall at Wellington Green, a Wellington resident's true risk of being victimized is much lower than reflected in the crime rate.



Source Data: Florida Department of Law Enforcement *County and Municipal Offense Data*

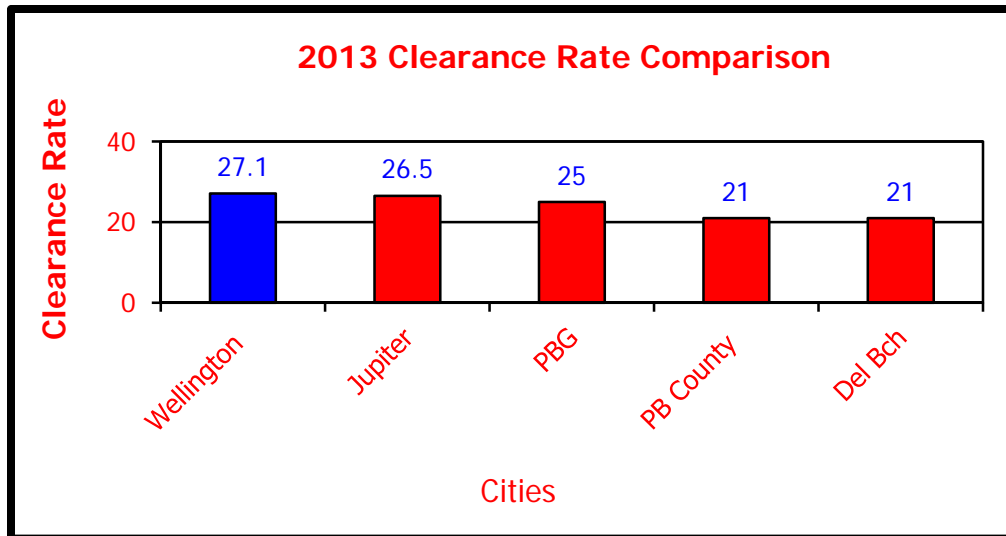
The above graph displays the crime rate for Wellington compared to the crime rate for all of Palm Beach County. Wellington's crime rate has consistently been lower than the crime rate for Palm Beach County. Wellington's crime rate declined in 2013 from 2012 by 4/10's of a percentage point and remains one of the lowest in Palm Beach County for a city with a population of 50,000 or more.

### Clearance Rate:



Source Data: FL Dept. of Law Enforcement *County & Municipal Offense Data Reports*

The clearance rate, like the crime rate, is published by the Florida Department of Law Enforcement in its *County and Municipal Offense Data* annual report. The clearance rate is commonly referred to as the “solvability rate” as it represents the percentage of Part 1 crimes solved by the responsible agency. A high clearance rate means that an agency is successful in investigating crimes and resolves more cases through arrest or other acceptable means (victim refuses to prosecute, case closed due to an agreement made between the victim and offender, etc.). The clearance rate is a strong indicator of law enforcement performance, because it is more directly influenced by actual law enforcement activity than the crime rate. Many variables outside the influence of a law enforcement agency impact the crime rate for example, per capita income, composition of the population, transiency (the movement of non-residents to and through a community), general economic conditions, rates of substance use/abuse to name a few. On the other hand, the clearance rate is impacted more by what a given law enforcement agency does. Law enforcement agency practices that influence the clearance rate include, but are not limited to: what type of calls an agency responds to, how many detective hours are dedicated to cases, availability of investigative resources and reputation the agency has in the community.



District 8 Wellington's clearance rate has been consistently above the overall clearance rate for Palm Beach County and similar cities in Palm Beach County. This indicates that persons who commit crimes in Wellington are more likely to get caught than those that commit crimes elsewhere in Palm Beach County. Wellington has one of the highest clearance rates for a city with a population of 50,000 or more in Palm Beach County. Wellington's clearance rate for 2013 is 27.1%.

#### **Strengths, Weaknesses, Opportunities, Trends, and Threat analysis (S.W.O.T.T.) Contract Reference Article 2.3(B)(4)**

##### **Strengths:**

When considering law enforcement in Wellington, the strengths far outweigh the weaknesses. Through its contract with the PBSO, Wellington enjoys exemplary law enforcement service. Each year through regular presentations given to Village Council by the District Commander, frequent meetings between the District Commander and Wellington senior staff, and the *Law Enforcement Services Plan* the PBSO and Wellington ensure that law enforcement needs are recognized and addressed. Successful programs implemented in Wellington include: a traffic enforcement unit, Section 8 Housing enforcement, Community Policing/ *Safe Neighborhoods Initiative*, a street team, and Juvenile Arrest and Monitoring.

Wellington has been able to maintain a low crime rate, high clearance rate, stable traffic crash rate, and rare occurrences of violent crime. PBSO implements annual action plans with specific performance objectives to ensure that identified law enforcement threats are kept at bay. Each year PBSO pays special attention to property crimes and traffic concerns. Investigative methods and traffic enforcement patterns are adjusted as needed to keep property crime and traffic crashes low. If and when necessary, specialty units from PBSO are deployed to solve crime problems. Specialty units include but are not limited to aviation, robbery/ homicide, narcotics bureau, K-9, crime scene, and SWAT. All of these specialized services are provided to Wellington as part of its contractual agreement and are not billed separately.

Due to the well planned partnership between PBSO and Wellington, Wellington's growth from 2000 to 2014 has been positive and has come with declines in the crime rate. Wellington and PBSO are working together to fulfill Wellington's vision of Wellington being *A GREAT HOMETOWN!*

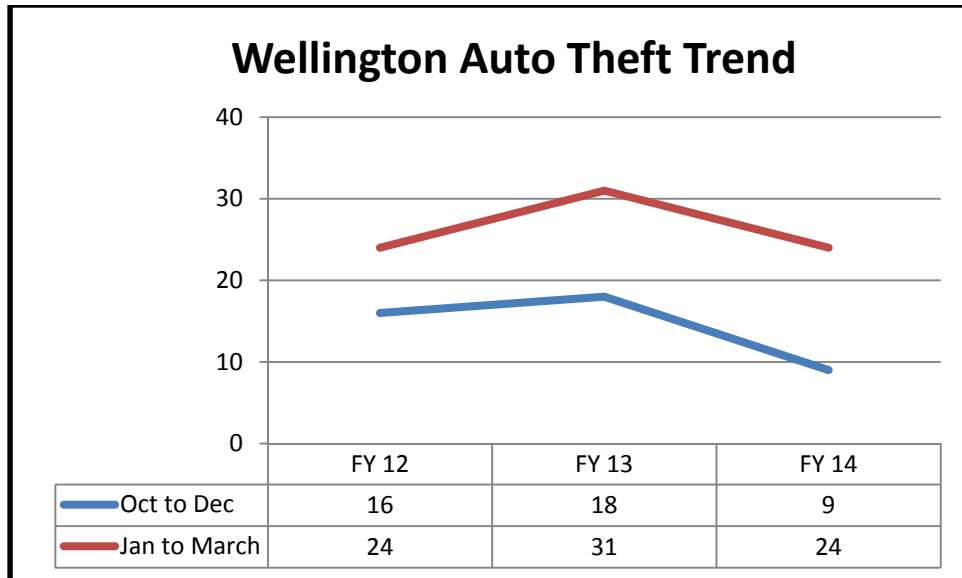
**Weaknesses:**

The greatest weaknesses facing the Village of Wellington are found in the neighborhoods identified as being in "transition," juvenile crime issues, and impact of new development. Transitional areas of the Village are being addressed through the *Safe Neighborhoods Initiative*. The *Safe Neighborhoods Initiative* is making progress.

The Village has made substantial infrastructure improvements to roadways and street lighting. Several neighborhood cleanups have been conducted, regular neighborhood meetings are conducted, and community outreach programs

Secondly, juveniles are consistently responsible for most of the crime in Wellington. 19% of all arrestees in Wellington in FY 14 were under 18 years of age. The most common crime committed by juveniles is retail theft, but juveniles are also commonly involved in burglaries. District 8 is continuing to expand its supervision of juvenile offenders by strictly enforcing the Juvenile Arrest and Monitoring (JAM) program. PBSO began aggressive involvement with this program in 2011 as a result of the Department of Juvenile Justice (DJJ) experiencing budget cuts. Through the JAM program, PBSO deputies are made aware of the juveniles that are on juvenile probation. PBSO deputies frequently check up on juveniles who are on probation, and if juveniles are found in violation of their probation, they are placed under arrest. Closer monitoring of juvenile offenders in Wellington is likely a major factor in holding the overall crime rate down. All Wellington deputies have been trained on the program and now all Wellington deputies are assisting in the monitoring of juveniles who are on probation and living in Wellington.

Third, Wellington is home to the world class "Winter Equestrian Festival." Wellington estimates that during the winter equestrian season the Village population rises by 3,000. The estimates are supported by the increase in both traffic crashes and auto thefts that occur during the winter equestrian season, January through March. In 2014, there was an average of (138) crashes per month during the equestrian season and an average of (119) crashes per month out of season. The chart below displays the auto theft trend in Wellington from FY 12 through FY 14.



Auto thefts rise during the equestrian season. Fourteen (14) of the twenty-four (24) auto thefts reported in FY 14 were to equestrian use vehicles, golf carts and motorcycles. Clearly, equestrian activity impacts law enforcement.

### **Opportunities:**

The “weaknesses” noted previously coupled with the challenge to maintain the gains Wellington has made are also Wellington’s greatest opportunities for success. PBSO and Wellington have learned to do more with less. The crime rate and clearance rate have stabilized. Wellington appears to have identified the proper balance needed to maintain a low crime rate and address unique challenges as they arise.

PBSO will continue its work with the *Safe Neighborhoods Initiative* to improve conditions in targeted neighborhoods. Community Policing deputies are continuing “aggressive” enforcement plans in all of the transitional neighborhoods, which includes expanded use of the Street Team to detect and remove criminal activity. Simultaneously, PBSO will continue participating in neighborhood cleanups, landlord/tenant meetings, neighborhood meetings, and code enforcement operations.

Lastly, Wellington has both a responsibility and an opportunity to maintain the successes made over the past (15) years. Wellington, ranked as one of the best 100 places to live in America by *Money* magazine, has an excellent park system and offers several amenities to its residents. Inherent in such achievements, is the challenge to maintain the quality of life Wellington has attained for its citizens.

### **Trends:**

As noted earlier, both the population and the calls for service have plateaued. Wellington has reached a point where, barring unforeseen growth, law enforcement service is balanced with the needs of the community. The crime rate is low, and the clearance rate is high. Response times are acceptable. Citizen satisfaction with law enforcement is high. The challenge for both PBSO and the Village is to maintain the

trends that are in place and remain vigilant to detect and deter any signs that positive trends reverse course.

### **Threats:**

Threats in the S.W.O.T. model refer to circumstances and or events that are external to an organization and present challenges that the organization must address. Wellington's greatest external threats have been the economic downturn, the subsequent decline in property values, and the rise in foreclosures. Wellington has done an excellent job managing these threats. Wellington, through the *Safe Neighborhoods Initiative*, has offered residents assistance with foreclosures. Recent improvement in the local economy has stimulated some new development. The tide of foreclosures has abated and property values have stabilized. Although the "crisis" may be over, prudence should be exercised going forward to ensure that public resources are not expanded beyond the capacity of the local government to sustain them.

PBSO has kept costs in check and has addressed property crime, traffic issues, commercial vehicle enforcement, and public preservation in FY 14. Transiency, the movement of non-residents to and through Wellington, is the major external law enforcement threat facing Wellington.

Looking forward, the emerging "threats" to Wellington public safety are the impact of seasonal population growth and equestrian related crime. Traffic crashes rise during the winter months. PBSO will deploy more targeted traffic interventions in FY 15 to deter traffic crashes. Also, auto thefts rise in the equestrian areas during the winter months. PBSO will work with the equestrian community to reduce and deter auto thefts for the FY 15 equestrian season.

PBSO and the Village of Wellington will address these threats through the action plans proposed for FY 15. FY 15 actions plans are: Traffic safety, Property crime, juvenile issues, and equestrian safety.

### **Staff Deployment:**

PBSO District 8 Wellington is fully staffed with sixty-nine (69) full time allocations. There are sixty-four (64) sworn allocations and five (5) civilian allocations. PBSO provides one (1) sworn allocation (detective) and Wellington pays for sixty-three (63) sworn allocations. The shift minimum (the minimum number of road patrol deputies assigned to Wellington at any time) is six (6). Thus, 24 hours a day 365 days per year there will be a minimum of six (6) road patrol deputies assigned to Wellington. In the event of a staff shortage, the minimum is met by using specialized units for road patrol duties, overtime, or resources from other PBSO Districts.

Currently, PBSO has forty-six road patrol allocations. Four (4) of those allocations are assigned to a "Street Team". The "Street Team" operates as a crime suppression/ special operations unit. One (1) allocation is assigned as a "lobby deputy" and handles walk in complaints at the office. One (1) allocation is assigned to the Community Policing (CP) unit. Thus, the routine calls for service are handled by forty (40) deputies divided into four (4) squads and two (2) motor units. There are two (2) day shift squads and two (2) night shift squads. A "power-shift" was created in FY

13. The “power-shift” consists of two (2) deputies who work day shift from 10:00a.m. to 8:00p.m. The extra manpower is useful during the evening hours where traffic crashes and other activity is more frequent. The motor unit works a flexible schedule, but most of the hours are on day shift.

**Conclusion:**

Since calls for service have stabilized and additional resources were added in FY 14, District 8 Wellington is not requesting additional deputies for FY 15. District 8 is currently staffed as follows: (1) Captain, (1) Lieutenant, (7) Sergeants, (46) deputy sheriffs, (4) Problem Oriented Policing deputies, (2) Motor Units, (2) Detectives, (1) Criminal Justice Planner, (2) Administrative Secretaries, (1) Law Enforcement Aide, one (1) Clerical Specialist and (63) School Crossing Guards. Additionally, PBSO assigns (1) Detective to Wellington at no additional cost to the Village. The current staffing pattern is sufficient to meet goals and objectives set for FY 15.

Wellington remains one of the safest cities in Palm Beach County and enjoys a low cost for its law enforcement service. Looking ahead to FY 15 and beyond, PBSO will continue to provide excellent law enforcement services striving to eliminate property crime, increase traffic safety, reduce juvenile crime, and address equestrian concerns. PBSO looks forward to working with the Village to make Wellington *A Great Hometown!*



## **Action Plans with Goals & Objectives**

**Contract Reference Article 2.3(B)(3) & 2.3(B)(6) - 2.3(B)(3)**

### **Plan 1                      Crime Prevention – Juvenile**

**Mission Statement “Tie-In”PBSO:**                      **Prevention & Suppression of crime**

**Village of Wellington Mission:**                      **Public Safety and Sound Government**

#### **Discussion:**

Juvenile crime is an ongoing problem. Juveniles are responsible for at least 20% of all crime in Wellington. Effective supervision of and intervention with juvenile offenders offers an opportunity to reduce crime and direct juveniles to non-criminal lifestyles.

**Goal:**                      Reduce crime through effective supervision of juvenile offenders.

**Objective:**                      Reduce the number of juvenile arrests in Wellington

#### **Inputs:**

- District 8 will deploy a deputy as a juvenile issues deputy

#### **Outputs:**

- Juveniles who are on juvenile probation will be visited at least once a month by the juvenile issues deputy

**Anticipated Outcome:**                      Juvenile arrests will decline by 5%.

## **Plan 2**

## **Traffic Safety**

### **Mission Statement “Tie-In” PBSO :**

Proactively control traffic and reduce traffic crashes

### **Village of Wellington Mission “Tie-In”:**

Public Safety & Sound Government

### **Discussion:**

PBSO District 8 Wellington is committed to traffic safety and pro-active traffic enforcement. Traffic concerns are consistently the most common “complaints” of residents. The traffic crash rate, #of traffic crashes per 100 residents, has stabilized over the past six (6) fiscal years at 2.2, 2.1, 2.1, 2.2, 2.3, and 2.2 for FY 08 through FY 13 respectively. Wellington’s crash rate for FY 13 was 2.2 crashes per 100 Village residents.

### **Goal:**

To prevent all traffic crashes and have no traffic fatalities.

### **Objective:**

Deploy motor units pursuant to traffic crash patterns and legitimate citizen traffic complaints during FY 15.

### **Inputs:**

- Ensure motor units receive all required training
- Ensure motor units have all necessary equipment

### **Outputs:**

- District 8 will conduct at least 8,000 traffic stops in FY 15.

### **Anticipated Outcome:**

The traffic crash rate in VOW will be 2.2 or less crashes per 100 Village residents in FY 15.

## **Plan 3**

## **Property Crime**

**Mission Statement “Tie-In” PBSO:** Community Policing and Problem Solving

**Village of Wellington Mission “Tie-In”:** Public Safety

### **Discussion:**

Property crimes, (business, construction site, residential, vehicle burglaries and vandalisms), are an ongoing concern in District 8 Wellington. Total property crimes for FY 05 through FY 13 were 981, 1,024, 1,165, 1,004, 1,176, 940, 771, 745, and 713 respectively. Property crimes decreased 4.2% in FY 13 vs. FY 12. The property crime rate, # of property crimes/ population, in Wellington was 1.2 in FY 13. This means, a Wellington resident had a 1.2% chance of being involved in a property crime in FY 13. District 8 is always concerned about property crime trends and will implement the below practices to curtail property crimes in Wellington.

**Goal:** Eliminate all property crime in the Village of Wellington.

**Objective:** Track, detect, and investigate property crimes in the Village during FY 15.

### **Inputs:**

- Deploy three (3) detectives full time to investigating property crimes.
- Ensure zone integrity of sector deputies.
- Ensure that sector deputies are aware of any suspects or recent property crime arrestees who reside in their assigned sector.

### **Outputs:**

- Preventive patrol will be conducted in areas and at times where property crimes are occurring.
- Produce weekly crime maps and monitor the time of day, day of week, and locations of property crimes.

### **Anticipated Outcome:**

- Property crimes will remain less than 1,000 cases in FY 15.
- 10% of burglaries will be cleared by arrest during FY 15.

## **Plan 4**

## **Equestrian Safety**

**Mission Statement “Tie-In” PBSO:** Prevention & Suppression of Crime

**Village of Wellington Mission “Tie-In”:** Equestrian Interests

### **Discussion:**

Wellington is home to the world renowned “Winter Equestrian Festival.” When the festival is taking place, traffic crashes and auto thefts rise. District 8 will deploy additional resources and work with the Equestrian community to reduce traffic crashes and deter auto thefts in the Equestrian area.

**Goal:** Eliminate auto thefts and crashes during the Equestrian community

**Objective:** Reduce auto thefts in the equestrian area by 10% in FY 15

### **Inputs:**

- Increase patrols at equestrian events
- Meet with Equestrian representatives to identify additional law enforcement needs

### **Outputs:**

- District 8 will record at least (100) business/ residence checks at equestrian events in FY 15.

### **Anticipated Outcome:**

- Equestrian areas will be free auto thefts.

**Current Allocations FY 14 and Proposed Allocations for FY 15**

<b>Position</b>	<b>FY 14 Allocations Funded by contract</b>	<b>Allocations Provided by PBSO</b>	<b>FY 15 Proposed Funded Allocations</b>	<b>Sworn</b>	<b>Non Sworn</b>
Captain	1		1	<b>x</b>	
Lieutenant	1		1	<b>x</b>	
Sergeants	7		7	<b>x</b>	
Deputy Sheriff's	46		46	<b>x</b>	
Deputy Sheriff's (POP)**	4		4	<b>x</b>	
Detective	2		2	<b>x</b>	
Detective *		1	1	<b>x</b>	
Motor Units	2		2	<b>x</b>	
CJ Planner	1		1		<b>X</b>
Administrative Secretaries	2		2		<b>X</b>
LE Aide	1		1		<b>X</b>
Clerical Specialist	1		1		<b>X</b>
School Crossing Guards **Part Time**	63		63		<b>X</b>
Total Paid by Wellington	68	1	68	60	63 (Part time Crossing Guards)
Total Provided by PBSO	1	1	1	1 (Detective)	
Total Staff	69	1	69	64	5 full time 63 part time

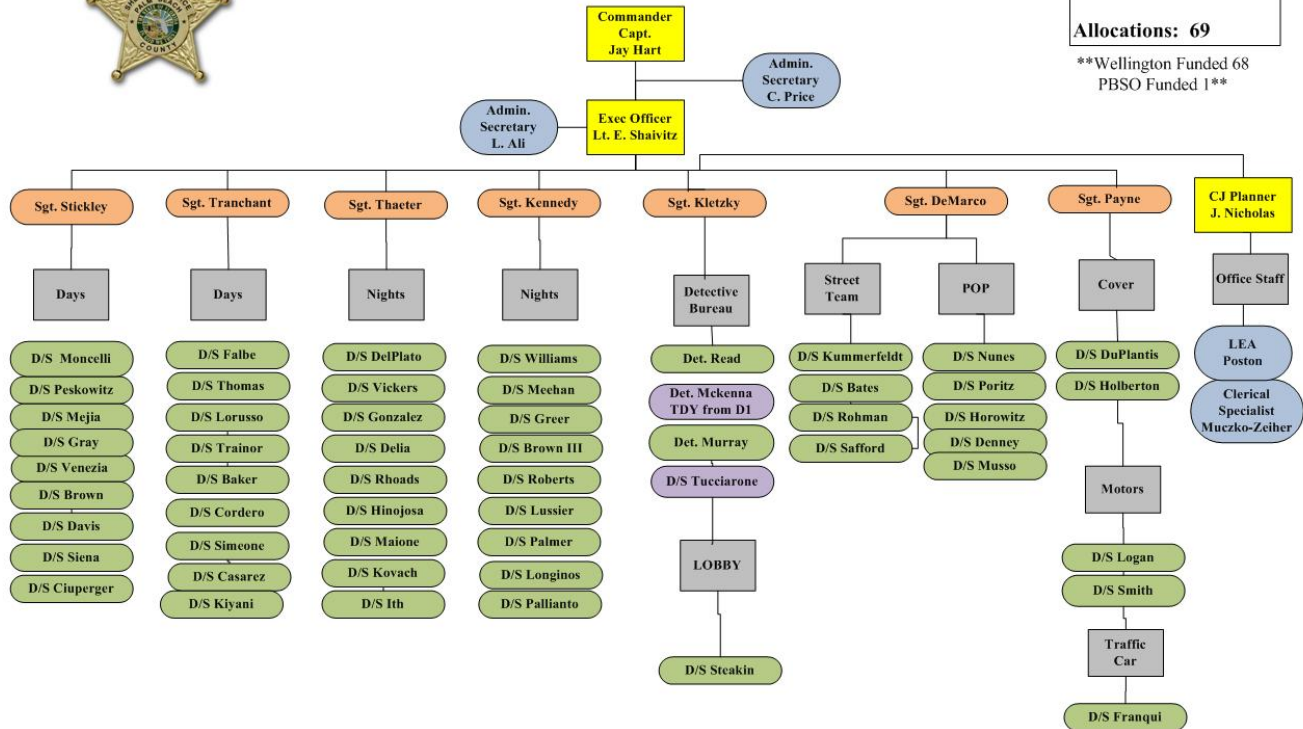
# Appendix



## PBSO District 8 – Wellington Organizational Chart

Sworn: 64  
Non-sworn: 5  
Authorized overages: 0  
\*\*1 Sworn TDY from D1\*\*  
  
Allocations: 69

\*\*Wellington Funded 68  
PBSO Funded 1\*\*



Exec/Capt/ Lt/CE	Sgt/CE	Sworn	Non-sworn	Section/Unit Name	Vacancy	FMLA/WC	Light Duty	Military	TDY	Admin. Leave	Grants	Alt Duty
---------------------	--------	-------	-----------	----------------------	---------	---------	------------	----------	-----	-----------------	--------	----------