

Legend

-  Municipal Boundaries
- Subareas**
-  Subarea A (Palm Beach Little Ranches)
-  Subarea B (Paddock Park/Saddle Trail)
-  Subarea C (Palm Beach Point/Orange Point)
-  Subarea D (Wellington Country Place/The Equestrian Club)
-  Subarea E (Rustic Ranches)
-  Subarea F (Winding Trails)

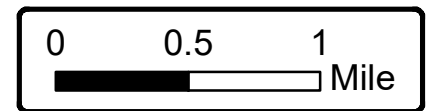
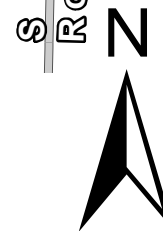
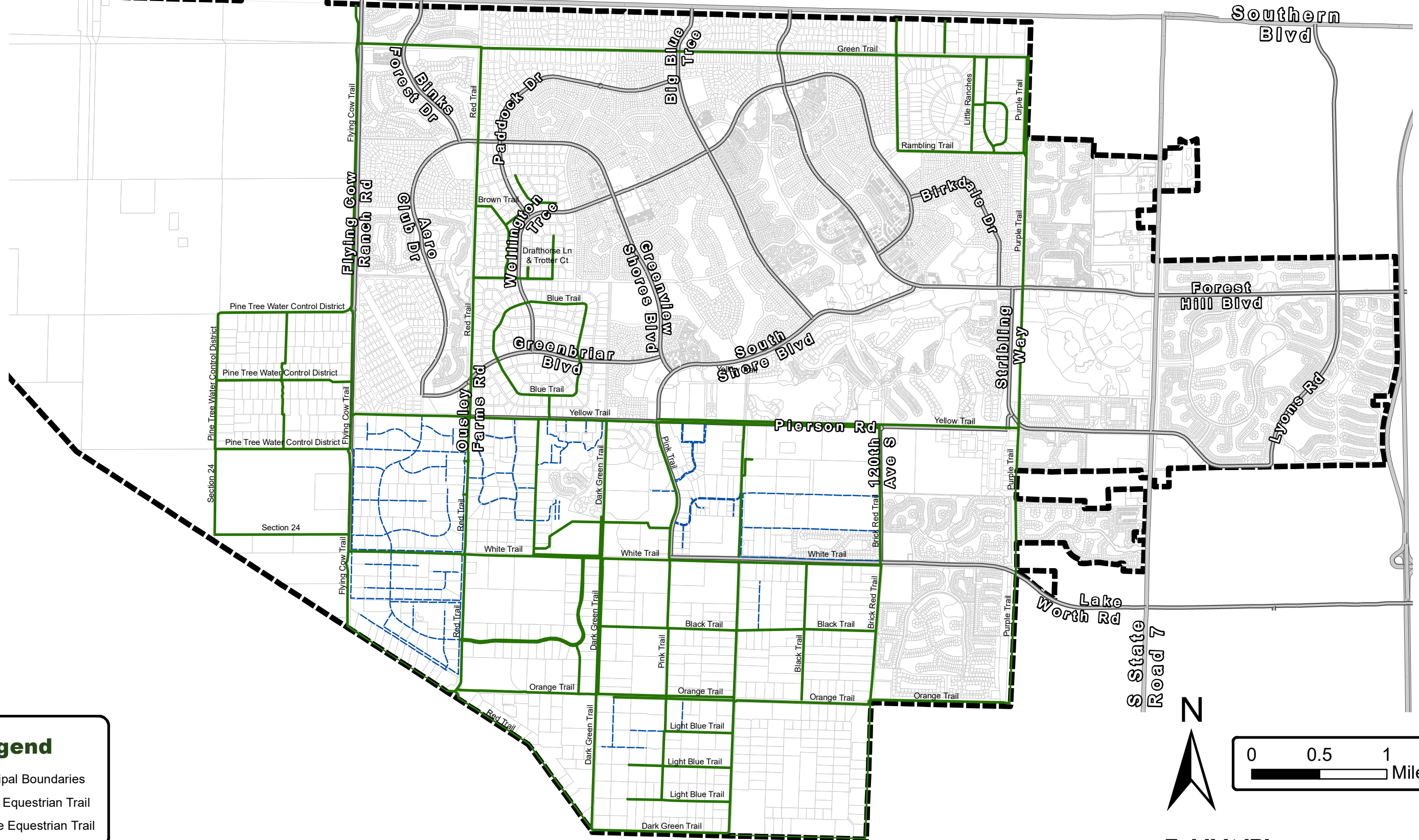


Exhibit 'A'

Adopted Bridle Path System



Legend

- Municipal Boundaries
- Public Equestrian Trail
- Private Equestrian Trail

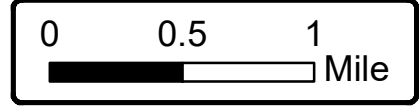
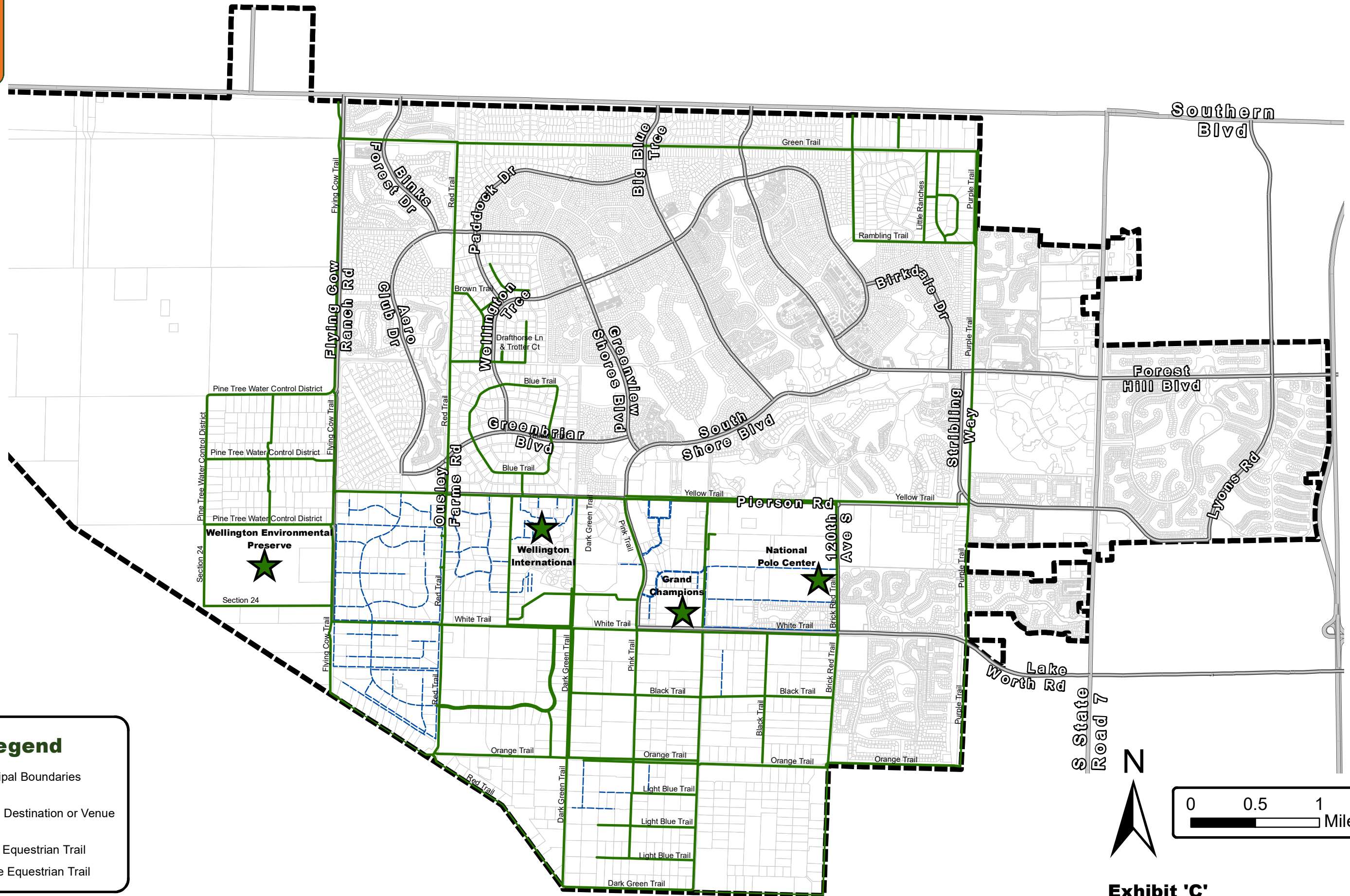


Exhibit 'B'



Legend

- Municipal Boundaries
- Local Destination or Venue
- Public Equestrian Trail
- Private Equestrian Trail

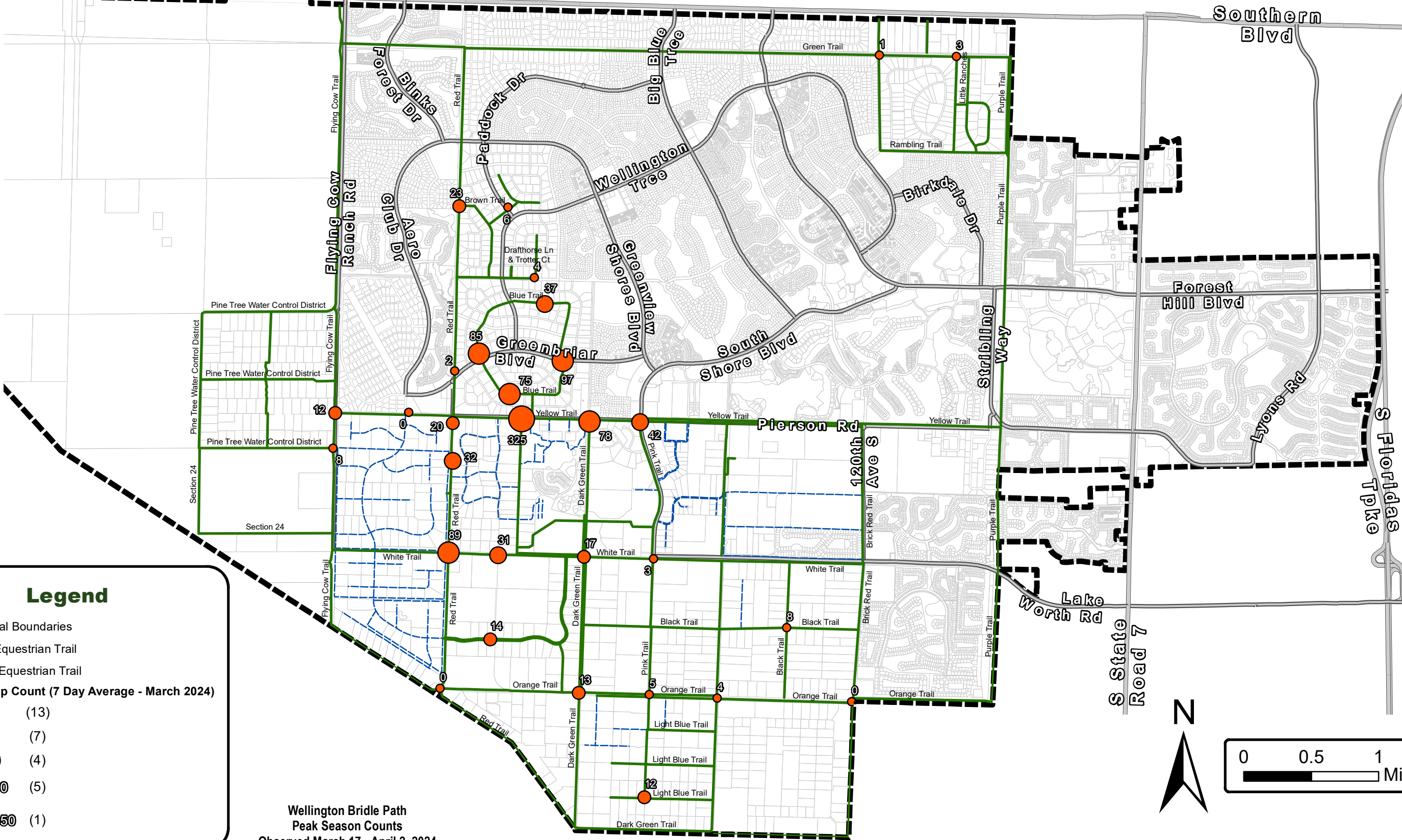
Scale

0 0.5 1 Mile

North Arrow

Bridle Path Trip Count

2024 Peak Season



Legend

- Municipal Boundaries
- Public Equestrian Trail
- Private Equestrian Trail

Bridle Path Trip Count (7 Day Average - March 2024)

	0 - 10	(13)
	11 - 25	(7)
	26 - 50	(4)
	51 - 150	(5)
	151 - 350	(1)

Wellington Bridle Path
Peak Season Counts
Observed March 17 - April 2, 2024

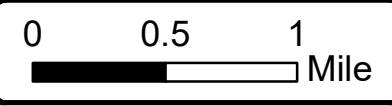
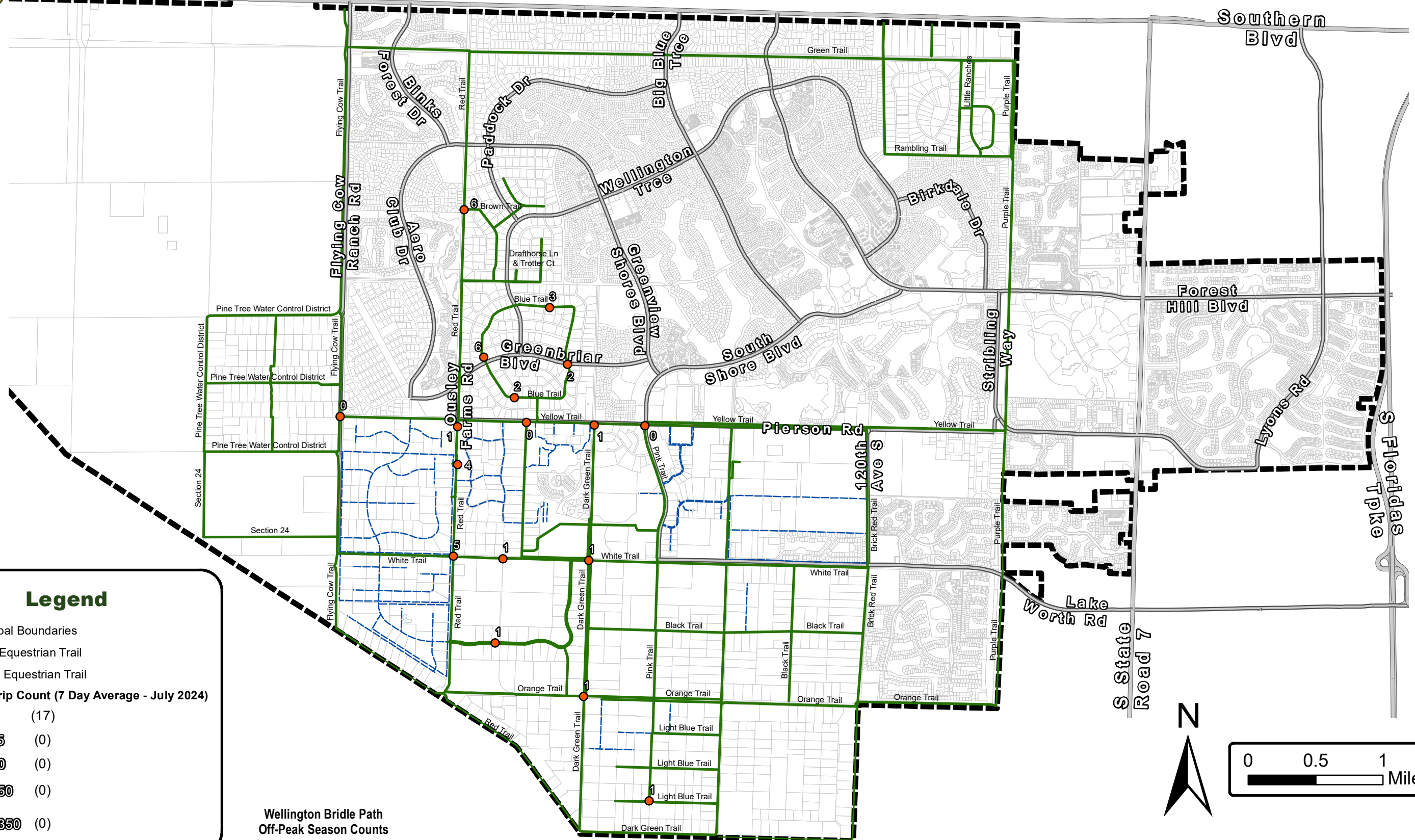


Exhibit 'D-1'

Bridle Path Trip Count

2024 Off-Peak Season



Legend

- Municipal Boundaries
 - Public Equestrian Trail
 - Private Equestrian Trail
- Bridle Path Trip Count (7 Day Average - July 2024)**
- 0 - 10 (17)
 - 11 - 25 (0)
 - 26 - 50 (0)
 - 51 - 150 (0)
 - 151 - 350 (0)

Wellington Bridle Path
Off-Peak Season Counts
Observed July 25-31, 2024

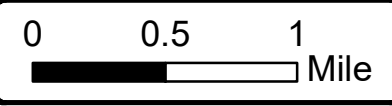
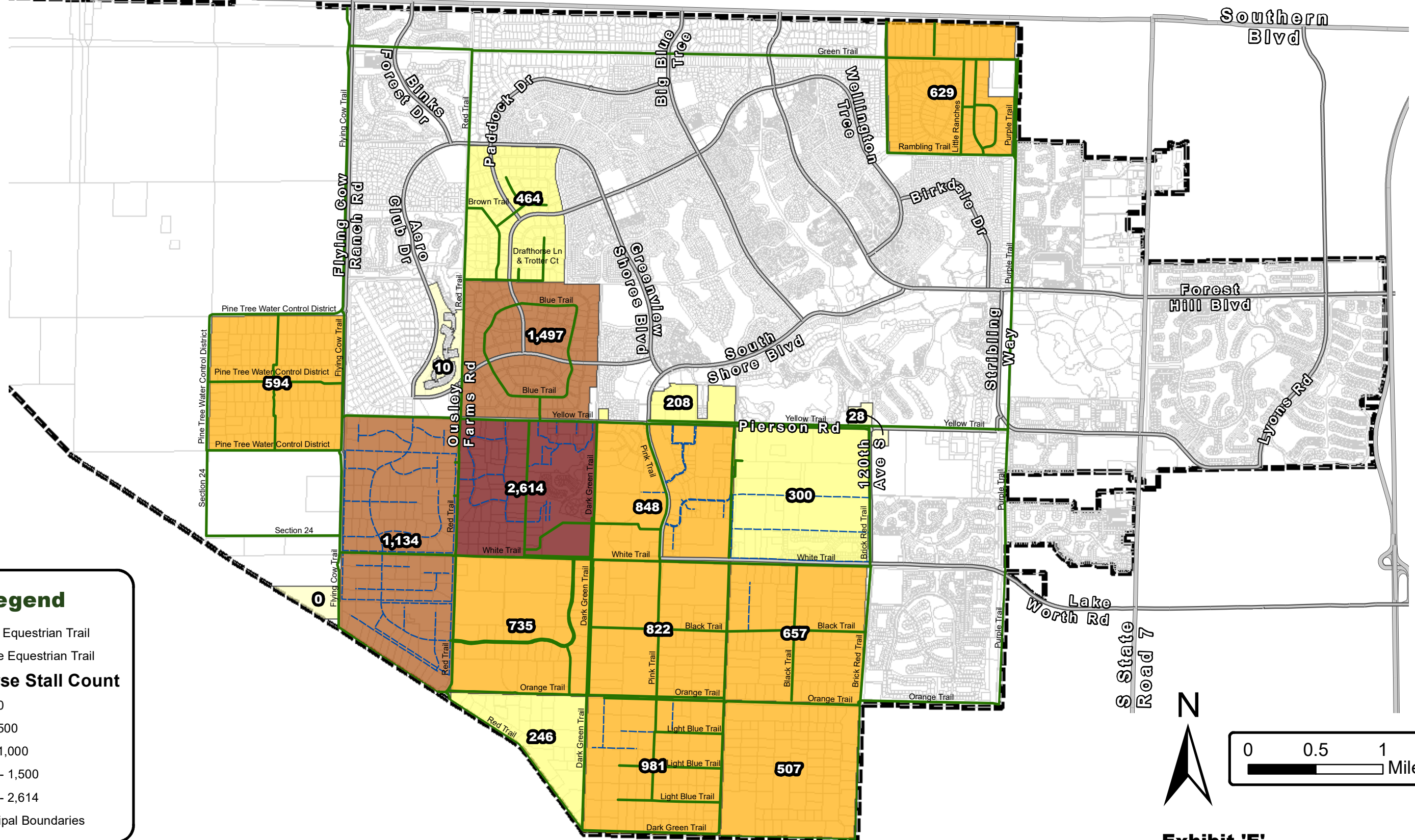


Exhibit 'D-2'



Legend

- Public Equestrian Trail
- Private Equestrian Trail

2023 Horse Stall Count

- 0 - 100
- 101 - 500
- 501 - 1,000
- 1,001 - 1,500
- 1,501 - 2,614

Municipal Boundaries

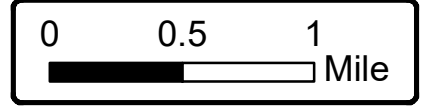
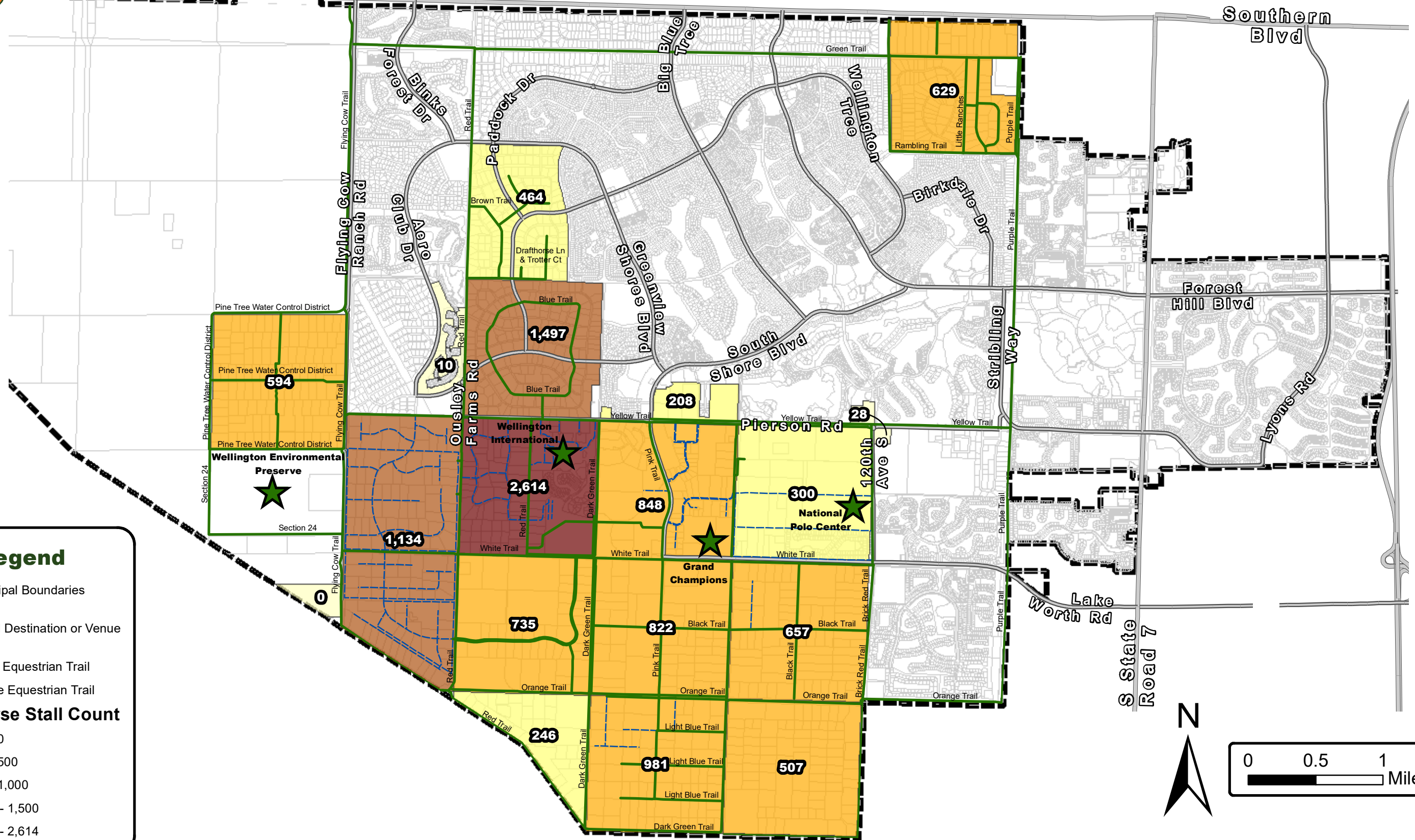


Exhibit 'E'



Legend

- Municipal Boundaries
- Local Destination or Venue
- Public Equestrian Trail
- Private Equestrian Trail

2023 Horse Stall Count

- 0 - 100
- 101 - 500
- 501 - 1,000
- 1,001 - 1,500
- 1,501 - 2,614

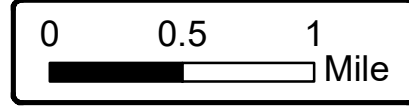


Exhibit 'F'



Equestrian Trails Circulation Master Plan Recommendations 2025-2027 Exhibit G

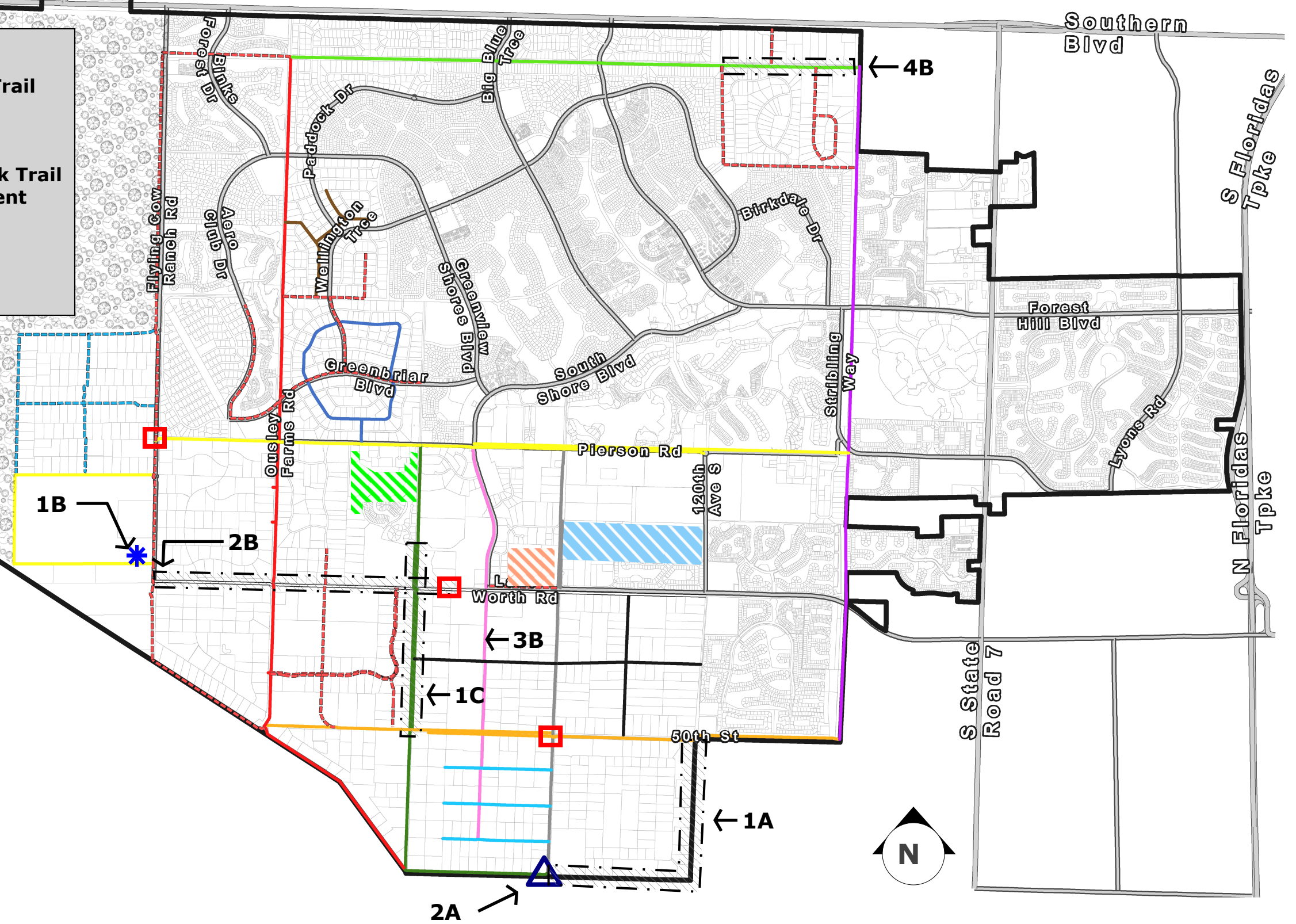
Recommendations

- 1A. Improvements of Section 34 Bridle Trail
- 2A. Proposed Culvert Canal Crossing
- 1B. Water and Shelter Location
- 2B. White Trail Improvement
- 3B. Installation of Fencing along the Pink Trail
- 4B. Drainage and Bridle Trail Improvement
- 1C. Dark Green Trail Improvement

*See Exhibit J for further details

LEGEND

- Public Bridle Trail
- Proposed Orchid Trail
- Potable Water & Shelter
- Proposed Crosswalk
- Proposed Canal Crossing
- Grand Champions Polo Club
- National Polo Center
- Wellington International



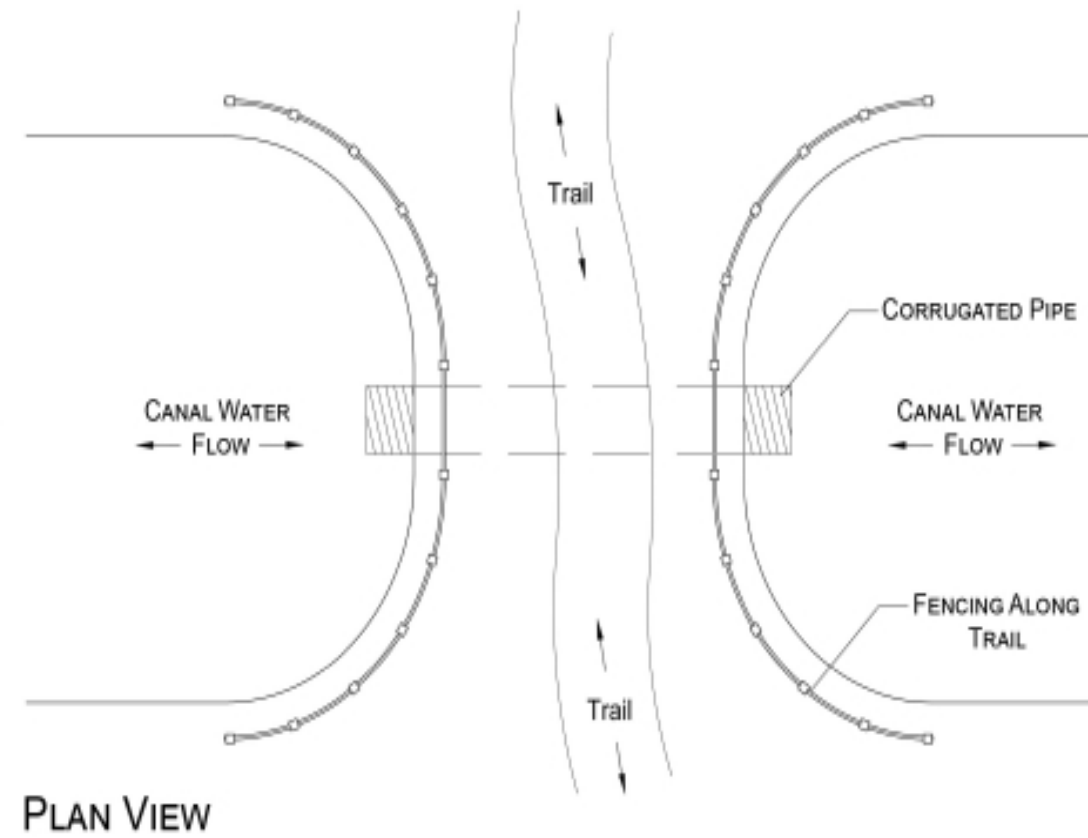
Date: 11/19/2024



Equestrian Trails Circulation Master Plan Typical Canal Crossings Exhibit H

CULVERT CROSSING

A CULVERT CANAL CROSSING IS THE MOST COMMON WAY TO BRIDGE THE GAP ACROSS AN EXISTING CANAL. THIS METHOD IS CURRENTLY USED IN NUMEROUS AREAS THROUGHOUT THE VILLAGE OF WELLINGTON.



Note: Culvert size determined by Village Engineer.



CROSSING FROM FLYING COW TRAIL TO YELLOW TRAIL



CROSSING INTO PRIVATE RESIDENCE



CROSSING ONTO ORANGE TRAIL



BLUE TRAIL CROSSING



Equestrian Trails Circulation Master Plan

Typical Trail Crossing Standards

Exhibit I

EQUESTRIAN/PEDESTRIAN CROSSING ADVANCE WARNING FLASHER ASSEMBLY SPECIFICATIONS

COMPLETE 15-FT SPUN POLE KIT TO INCLUDE ALL MOUNTING HARDWARE TO INCLUDE 15-FT CRASH TESTED 4" ROUND ALUMINUM SPUN POLE WITH PEDESTAL BASE, TOP CAP, ANCHOR BOLTS, SIGNAL HEAD MOUNT ARM, CONTROL BOX MOUNT.

PUSH BUTTON/CROSSWALK SYSTEM TO INCLUDE DOUBLE 12" YELLOW/AMBER LED'S INSTALLED IN 12" LIGHT HOUSING PLASTIC INJECTED MOLDED POLYSTYRENE TUFEN U.V. IMPREGNATED MATERIAL FOR ULTRA VIOLET RAYS, POLYCARBONATE HEADS, 20-WATT SOLAR PANEL WITH MOUNTING BRACKET, PROGRAMMABLE TIMER MODULE, ALUMINUM BATTERY BOX, CONTROLLER SOLAR POWER PACKAGE INCLUDING 2-18 AMP BATTERIES (12V-DC, 18 AMP) MOUNTING HARDWARE TO MOUNT TO EXISTING POLE AND RADIO. CONTROL CABINET IS 7-1/2" X 11-1/4" X 4", .063 ALUMINUM, LOCATED BELOW SOLAR PANEL.

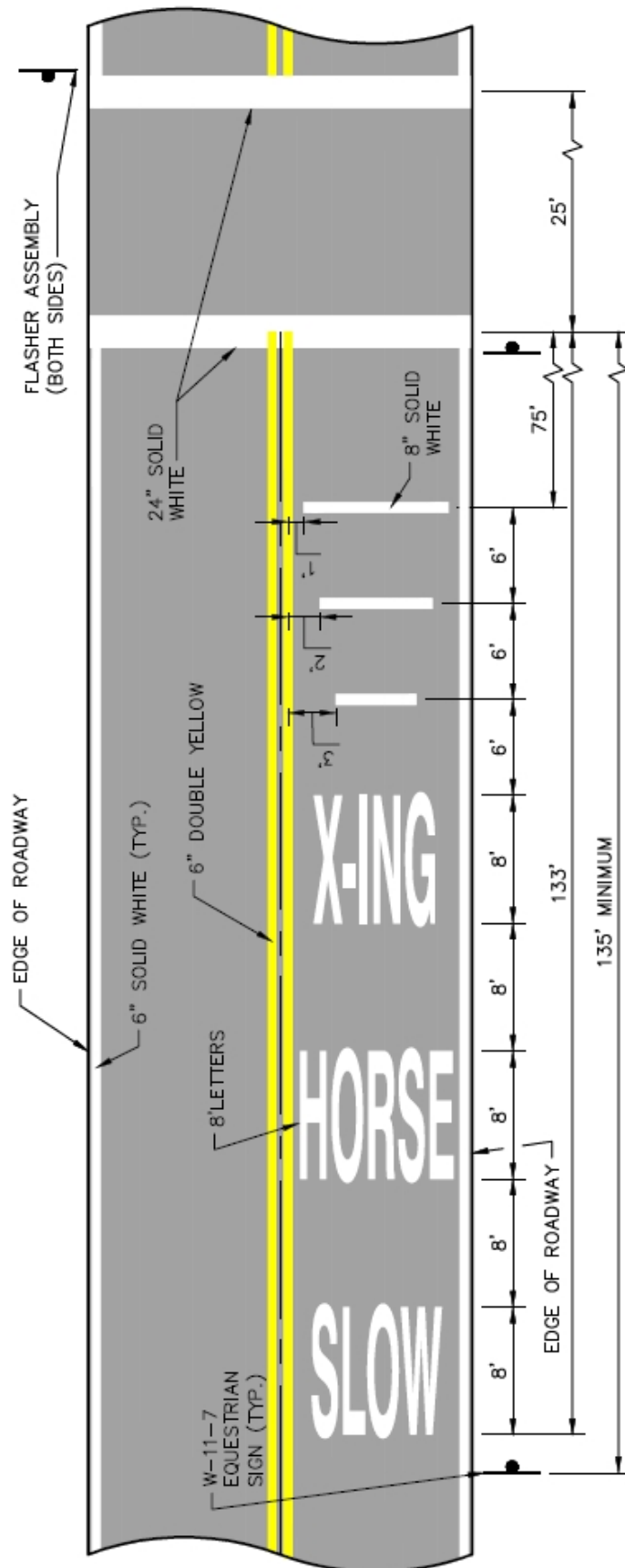
CROSSWALK PUSH BUTTON SYSTEM CONSISTING OF 2" BUTTON WITH MOMENTARY SWITCH RATED AT 36VDC AND 5"LX7" BUTTON FIXTURE WITH CROSSING SIGN INSERTED; HEAVY DUTY LONG LIFE SWITCH. SUBASSEMBLY (FOR CrossTalk OR SPLasher). 4 PUSH BUTTONS REQUIRED, 2 PER POLE. ON EACH POLE, ONE PUSH BUTTON SHALL BE INSTALLED AT 40" ABOVE GRADE FOR PEDESTRIAN USAGE AND ONE PUSH BUTTON SHALL BE INSTALLED AT 70" ABOVE GRADE FOR HORSE RIDER USAGE.

30"x30" INTERNATIONAL (PICTURE) HORSE CROSSING SIGN WITH HIGH INTENSITY REFLECTIVITY.

ASSEMBLY SHALL BE AS MANUFACTURED BY K&K INC. MODEL NO. ECO-132-12, OR EQUAL.



W-11-07 EQUESTRIAN CROSSING SIGN N.T.S.



EQUESTRIAN CROSSING WITH SOLAR FLASHERS (TYPE 2)

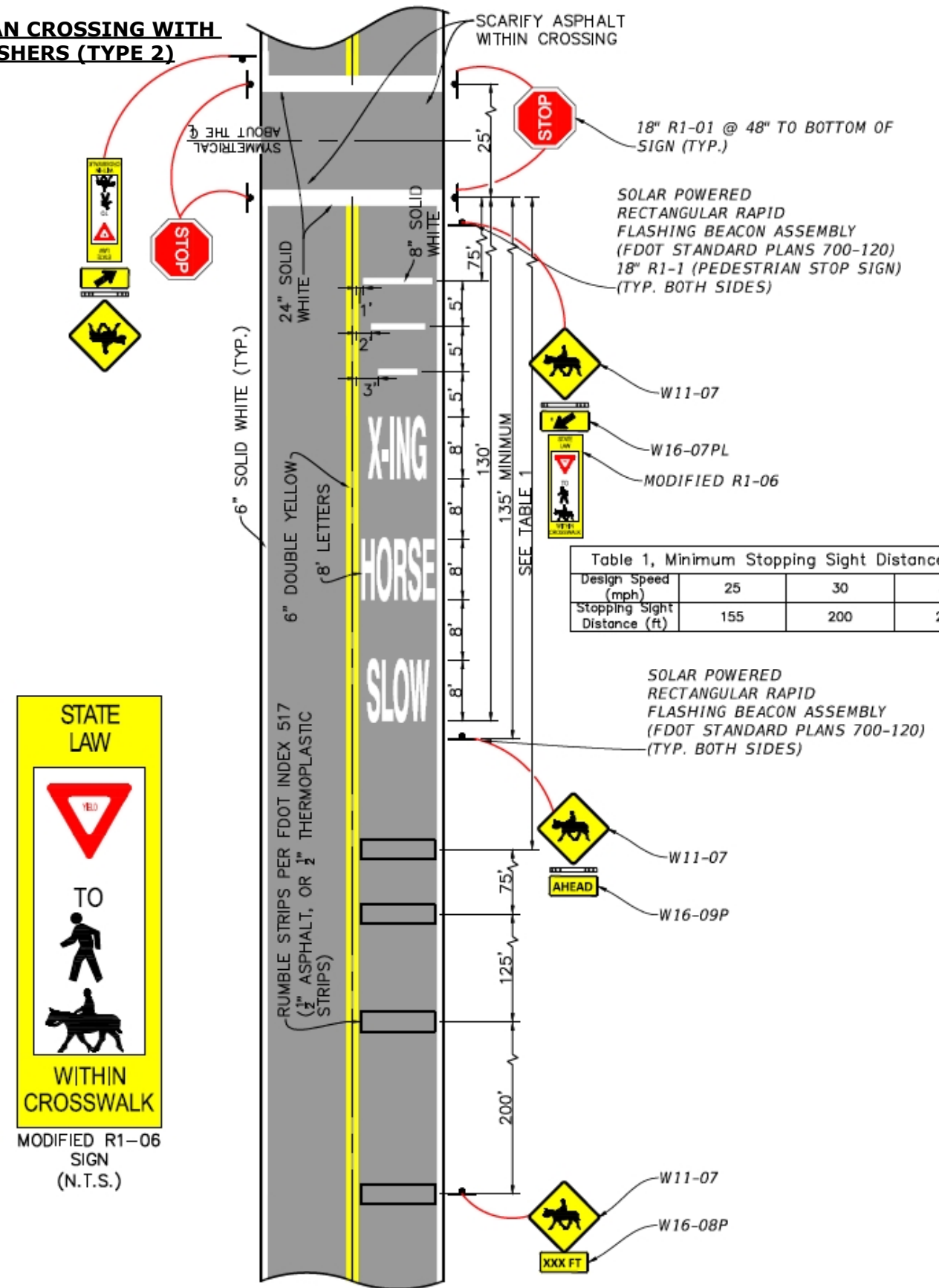


Table 1, Minimum Stopping Sight Distance (ft)

Design Speed (mph)	25	30	35
Stopping Sight Distance (ft)	155	200	250

Note: Refer to Engineering Standards Manual for specific signage and marking requirements.

Year One 2025-2026

Improvements	Estimated Costs
1A. Improve bridle trail on East and Southside of Section 34- improve approximately 5,000 ft. of bridle trail within the Eastside and Southside boundaries of Section 34 to accommodate the increased use by the riders.	\$600,000
2A. Installation of a culvert crossing – proposed to connect 130th Ave S and 60th St. S to Section 34.	\$300,000

Total Cost Estimates Year 1: \$900,000

Year Two 2026-2027

Improvements	Estimated Costs
1B. Water and Shelter Location – propose one (1) shelter location on Flying Cow Trail adjacent to the Environmental Preserve to provide water and shade for horses and riders. The proposed location may also be implemented within the Environmental Preserve Expansion site.	\$200,000
2B. White Trail Improvement – North of the C-24 Canal between South Shore and South Rd. and south of canal from South Rd to Palm Beach Point Blvd. install asphalt millings to improve footing.	\$400,000
3B. Installation of Fencing along the Pink Trail (Southshore Blvd)- install approximately 4,000 ft. of fencing along the west side of Southshore Blvd.	\$300,000
4B. Drainage and Bridle Trail Improvement on ACME Rd. – Fill existing roadside swale and pipe drainage to conveyances.	\$750,000

Total Cost Estimates Year 2: \$1,650,000

Year Three 2027-2028

Improvements	Estimated Costs
1C. Dark Green Trail Improvement – West side of the C-4 Canal from 50 St. to Gracida St. install asphalt millings to improve footing.	\$400,000

Total Cost Estimates Year 3: \$400,000

DRAFT