

- Palm Beach County Zoning Districts**
- Agricultural Residential
 - Community Commercial
 - Institutional and Public Facilities

State Road 80/Southern Boulevard

Legend

Zoning Districts

- ER - Equestrian Residential (Low Density)
- RS - Residential Single-family (Low Density)
- RM - Residential (Medium Density)
- RH - Residential (High Density)
- CC - Community Commercial
- CF - Community Facilities
- ECR - Equestrian Commercial Recreation
- PUD - Planned Unit Development
- MUPD - Multiple Use Planned Development
- MCPD - Medical Center Planned Development
- FLEX - Flex Use
- PBC/Other

Overlays

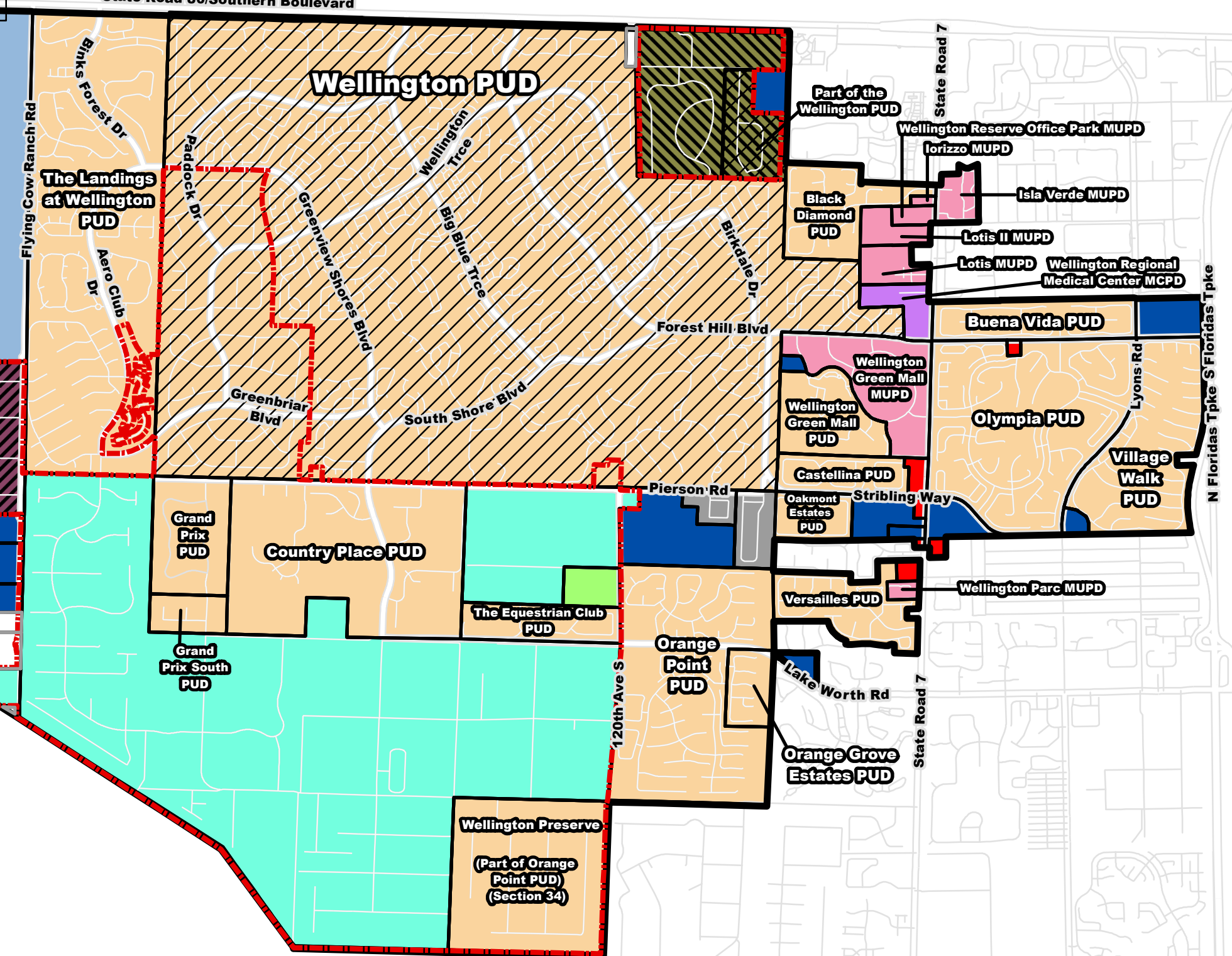
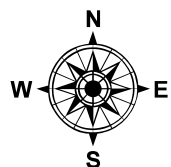
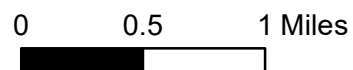
- EOZD - Equestrian Overlay Zoning District
- LROZD - Little Ranches Overlay Zoning District
- RROZD - Rustic Ranches Overlay Zoning District

Municipal Boundary

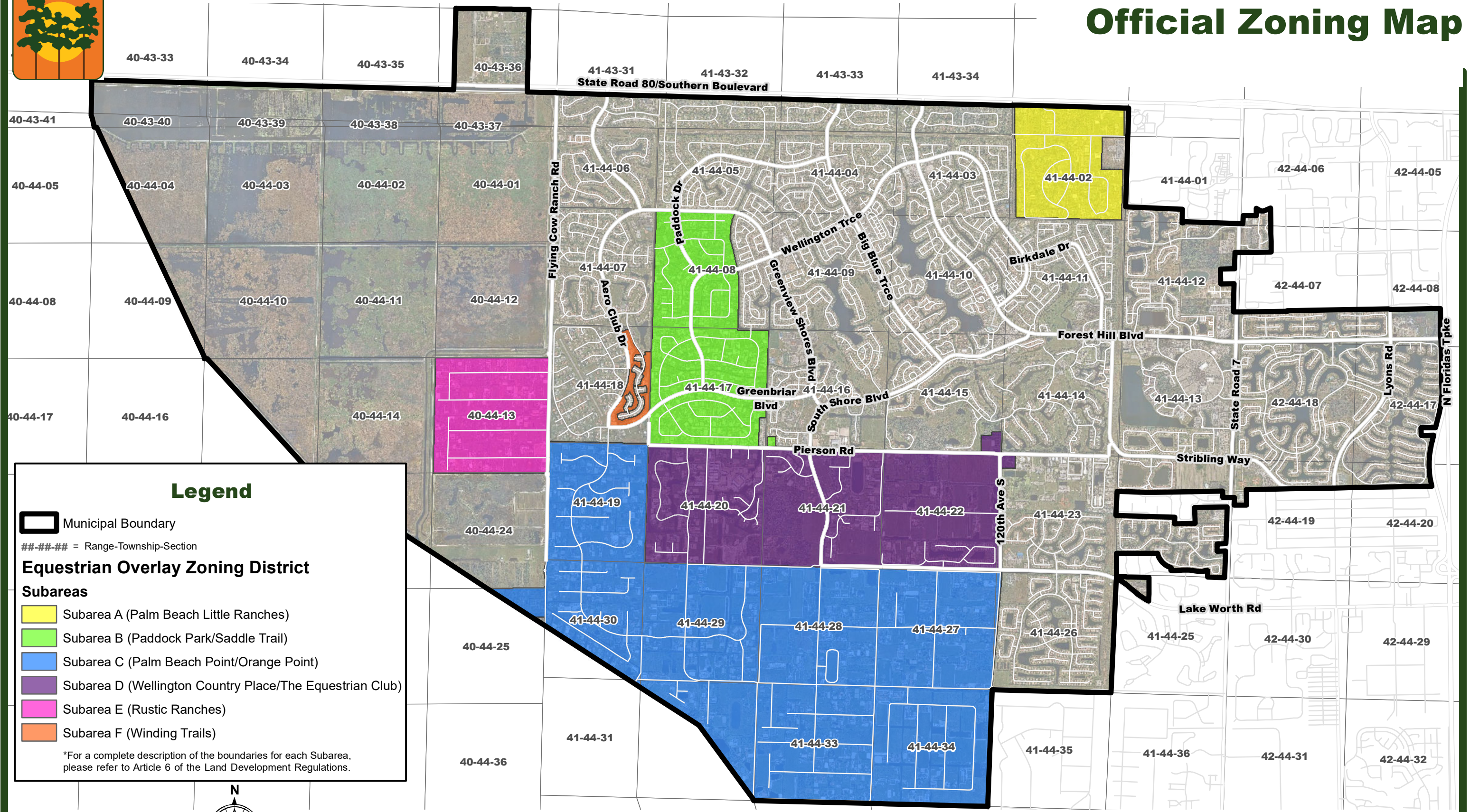
*Density ranges for properties in residential districts are determined by a property's Future Land Use Map designation.

Ordinance No. 2023-02

Adoption Date: 2/7/2024



Village of Wellington Official Zoning Map



Legend

- Municipal Boundary
- ###-###-### = Range-Township-Section
- Equestrian Overlay Zoning District**
- Subareas**
- Subarea A (Palm Beach Little Ranches)
- Subarea B (Paddock Park/Saddle Trail)
- Subarea C (Palm Beach Point/Orange Point)
- Subarea D (Wellington Country Place/The Equestrian Club)
- Subarea E (Rustic Ranches)
- Subarea F (Winding Trails)

*For a complete description of the boundaries for each Subarea, please refer to Article 6 of the Land Development Regulations.

