

Exhibit E - Lot 1 Updated Elevations and Materials







3 COAT STUCCO VENEER
-LACE FINISH W/ VERTICAL AND HORIZONTAL
SCORING



WARM WHITE FINISH

1

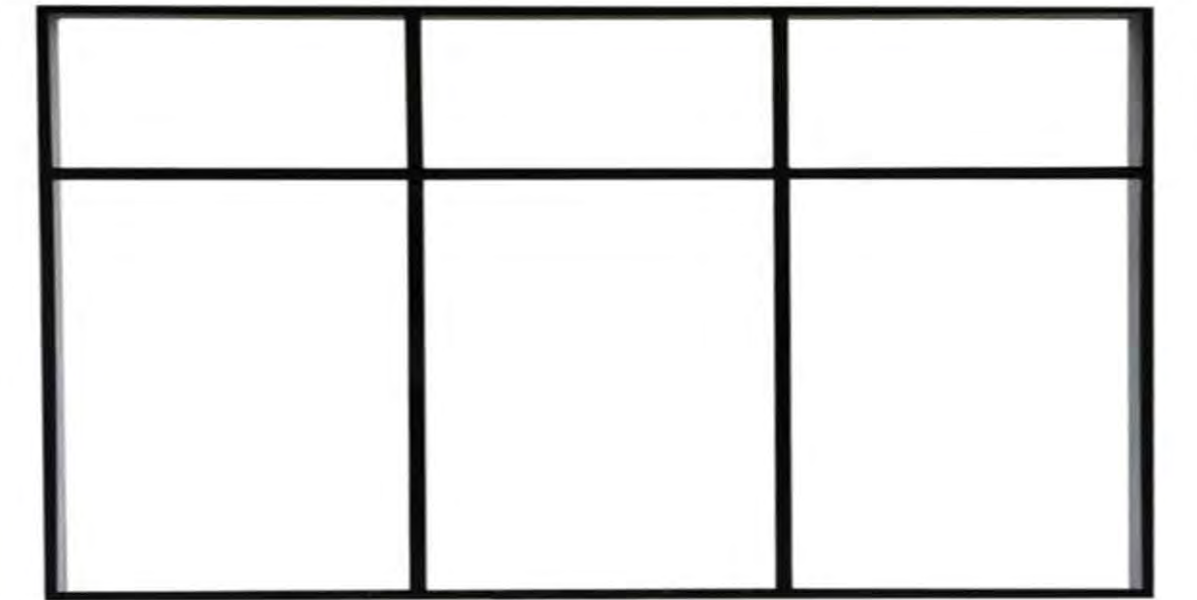


PRE-FINISHED CEMENT TILE ROOFING



GRAY FINISH

2



METAL FRAME HURRICANE RATED WINDOW
SYSTEM

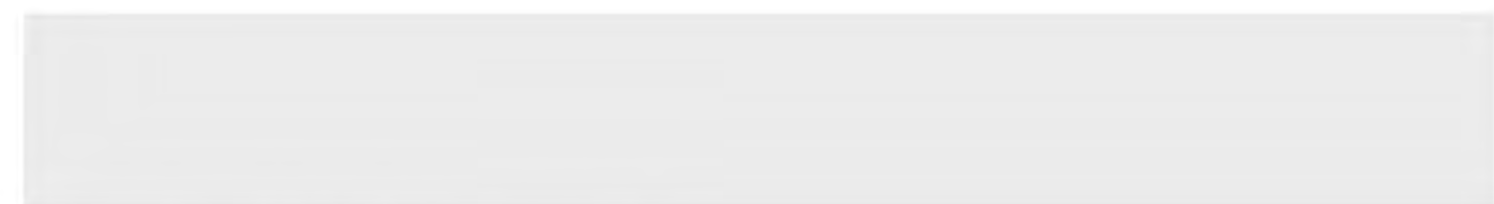


MATTE BLACK FINISH

3



NICKEL GAP PATTERN



WARM WHITE FINISH

4

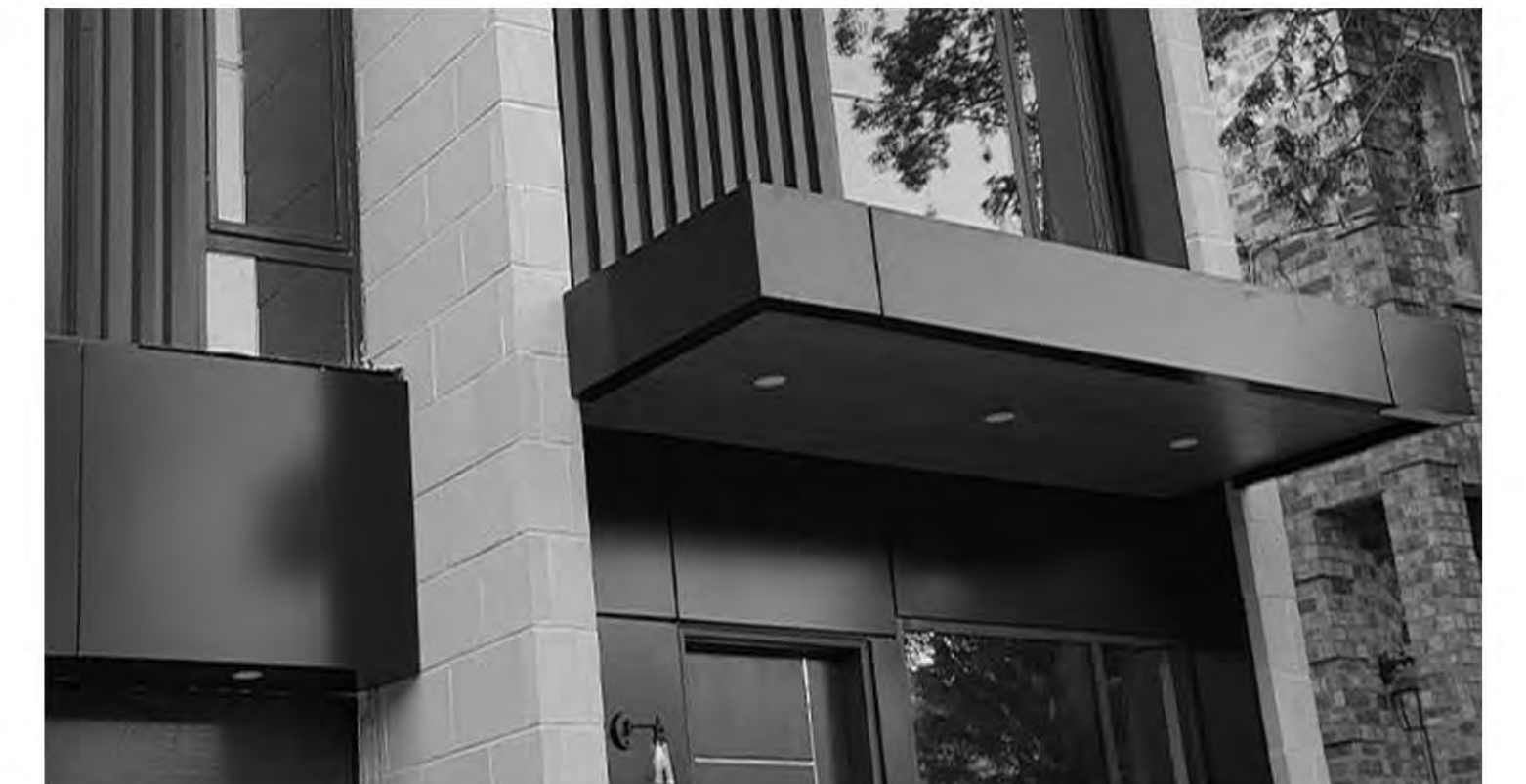


METAL FRAME HURRICANE RATED O.H.
GARAGE DOOR ASSEMBLY



FROSTED GLASS WITH OAK FINISH

5



PRE FINISHED METAL CLADDING

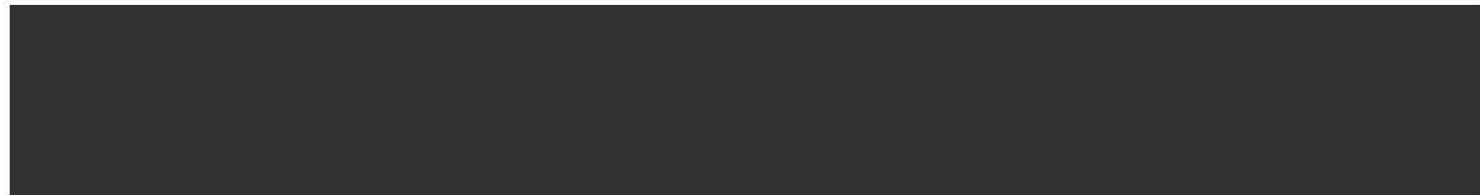


SLATE GRAY FINISH

6

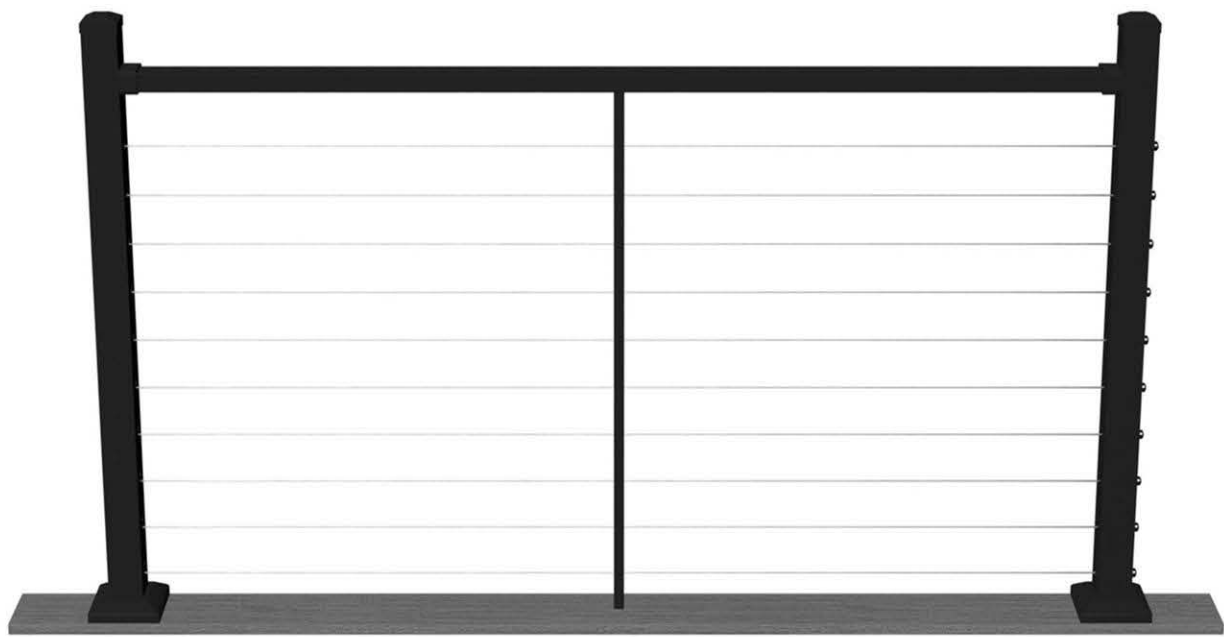


METAL FRAME HURRICANE RATED DOOR AND WINDOW SYSTEM

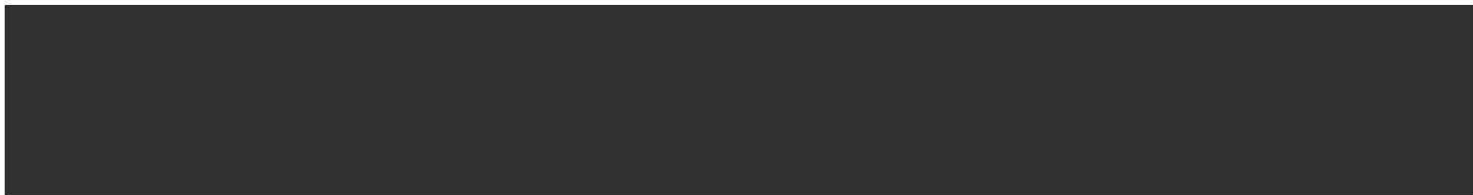


MATTE BLACK FINISH

7



BLACK CABLE RAIL AND POST



MATTE BLACK FINISH

8



MATTE BLACK METAL FRAME HURRICANE RATED DOOR SYSTEM

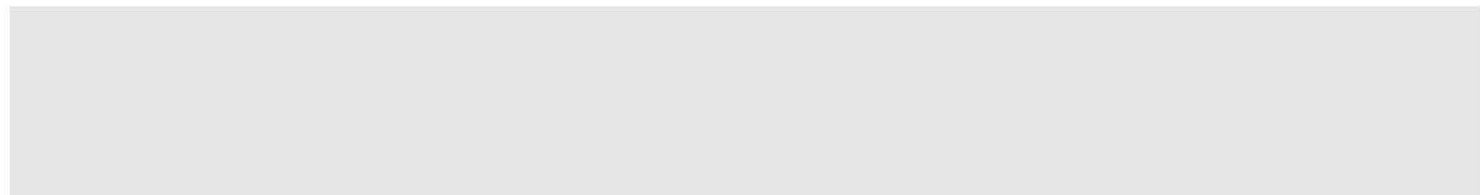


MATTE BLACK FINISH

9



3 COAT STUCCO VENEER
-SAND FINISH



WARM WHITE FINISH

10



GRANOFF ARCHITECTS

330 RAILROAD AVENUE
GREENWICH, CT 06830

203.625.9460

WWW.GRANOFFARCHITECTS.COM

FARRELL WELLINGTON
ESTATES

FLORIDA

DATE: 07/14/2025

DRAWING NO.:

LOT 1

© 2022 GRANOFF ARCHITECTS
These drawings, concepts, designs and ideas are the property of R.S. Granoff Architects, P.C. They may not be copied, reproduced, disclosed to others, or used in connection with any work other than the specified project for which they were prepared, in whole or in part, without prior written consent of R.S. Granoff Architects, P.C.



GRANOFF ARCHITECTS

330 RAILROAD AVENUE
GREENWICH, CT 06830

203.625.9460

WWW.GRANOFFARCHITECTS.COM

FARRELL ESTATES WELLINGTON

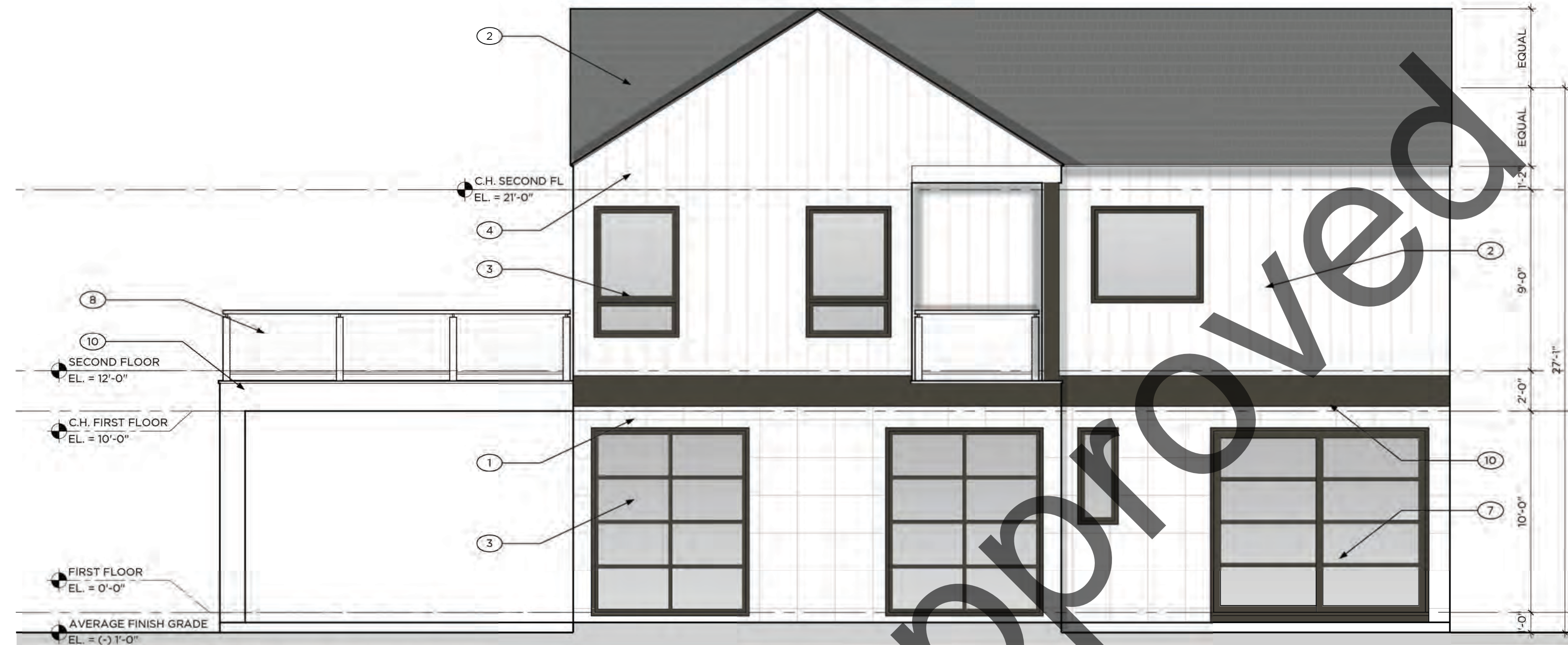
FLORIDA

DATE: 01/05/2024

DRAWING NO.:

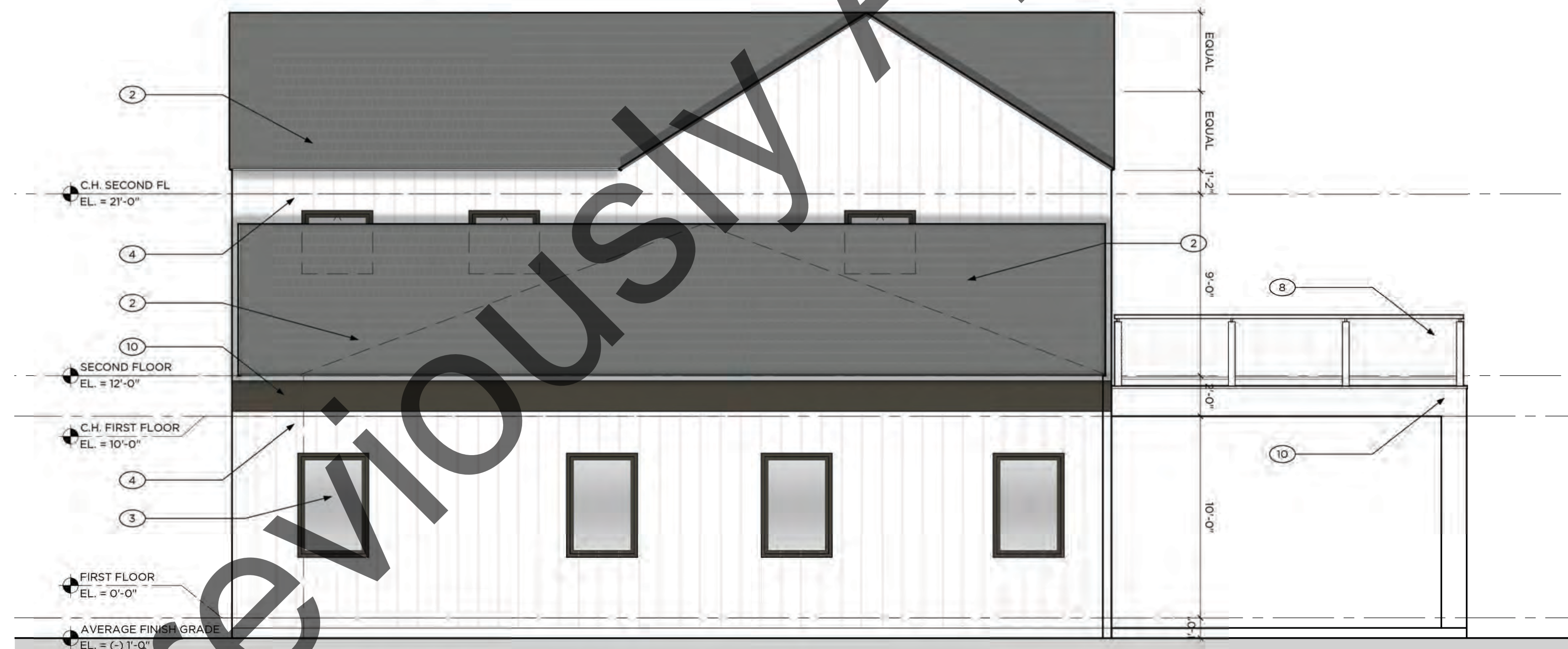
**LOT 1 - 5,000 SF
MODEL 7**

© 2022 GRANOFF ARCHITECTS
These drawings, concepts, designs and ideas are the property of Granoff Architects, P.C.
They may not be copied, reproduced, disclosed to others, or used in connection with any
work other than the specified project for which they were prepared, in whole or in part,
without prior written consent of Granoff Architects, P.C.



1 SIDE ELEVATION
GREAT ROOM SIDE

1/4"=1'-0"



2 SIDE ELEVATION
GARAGE SIDE

1/4"=1'-0"



GRANOFF ARCHITECTS

330 RAILROAD AVENUE
GREENWICH, CT 06830

203.625.9460

WWW.GRANOFFARCHITECTS.COM

FARRELL ESTATES WELLINGTON

FLORIDA

DATE: 01/05/2024

DRAWING NO.:

**LOT 1 - 5,000 SF
MODEL 7**

© 2022 GRANOFF ARCHITECTS
These drawings, concepts, designs and ideas are the property of Granoff Architects, P.C.
They may not be copied, reproduced, disclosed to others, or used in connection with any
work other than the specified project for which they were prepared, in whole or in part,
without prior written consent of Granoff Architects, P.C.



3 COAT STUCCO VENEER
-LACE FINISH W/ VERTICAL AND HORIZONTAL
SCORING



WARM WHITE FINISH

1

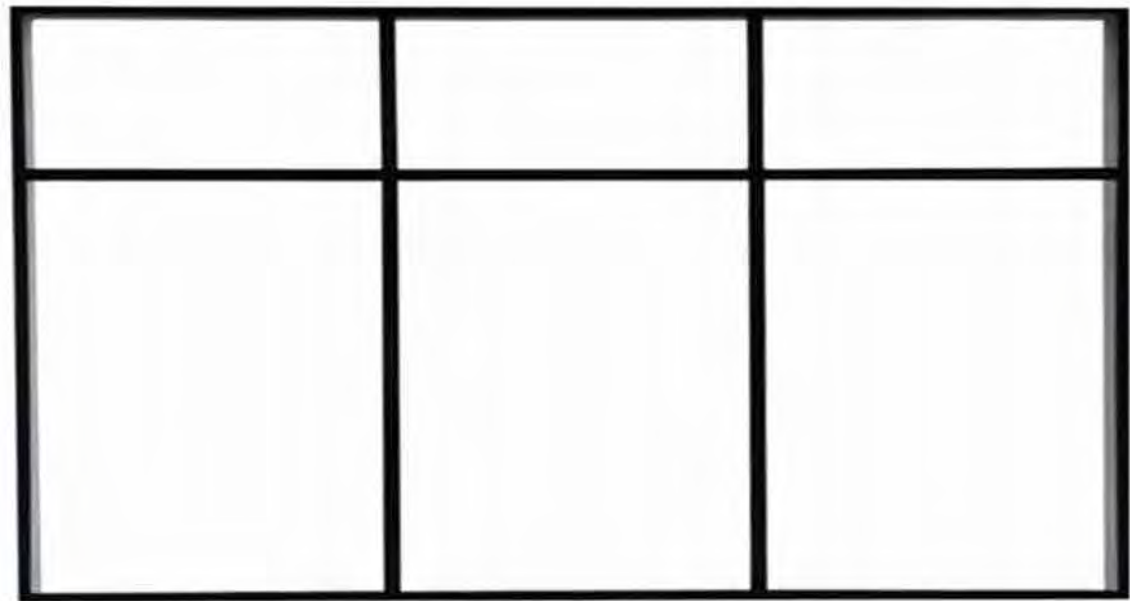


PRE-FINISHED CEMENT TILE ROOFING



GRAY FINISH

2



METAL FRAME HURRICANE RATED WINDOW
SYSTEM



MATTE BLACK FINISH

3



NICKEL GAP COMPOSITE WOOD



WARM WHITE FINISH

4

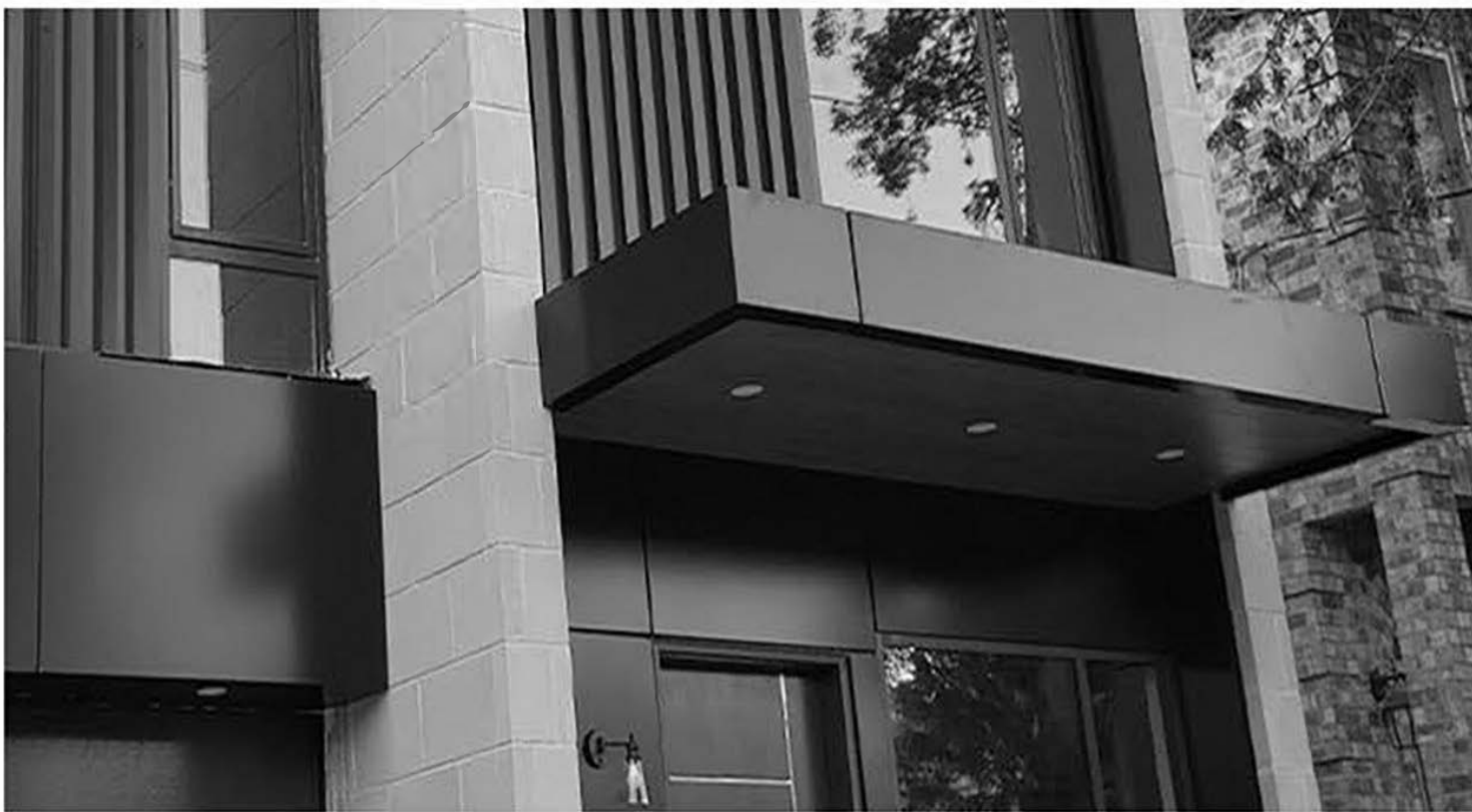


METAL FRAME HURRICANE RATED O.H.
GARAGE DOOR ASSEMBLY

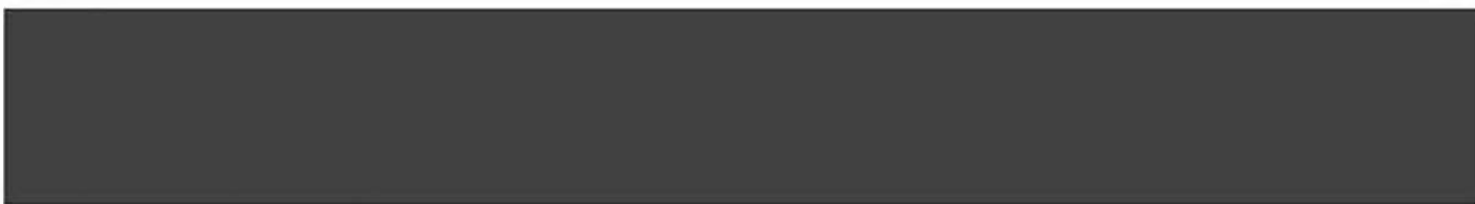


FROSTED GLASS WITH OAK FINISH

5



PRE FINISHED METAL CLADDING



SLATE GRAY FINISH

6



GRANOFF ARCHITECTS

330 RAILROAD AVENUE
GREENWICH, CT 06830

203.625.9460

WWW.GRANOFFARCHITECTS.COM

**FARRELL ESTATES
WELLINGTON**

FLORIDA

DATE: 01/05/2024

DRAWING NO.:

**LOT 1 - 5,000 SF
MODEL 7**

© 2022 GRANOFF ARCHITECTS
These drawings, concepts, designs and ideas are the property of Granoff Architects, P.C.
They may not be copied, reproduced, disclosed to others, or used in connection with any
work other than the specified project for which they were prepared, in whole or in part,
without prior written consent of Granoff Architects, P.C.



METAL FRAME HURRICANE RATED DOOR AND WINDOW SYSTEM



MATTE BLACK FINISH

7



STAINLESS STEEL CABLE RAIL AND POST



STAINLESS STEEL FINISH

8



METAL FRAME HURRICANE RATED DOOR SYSTEM

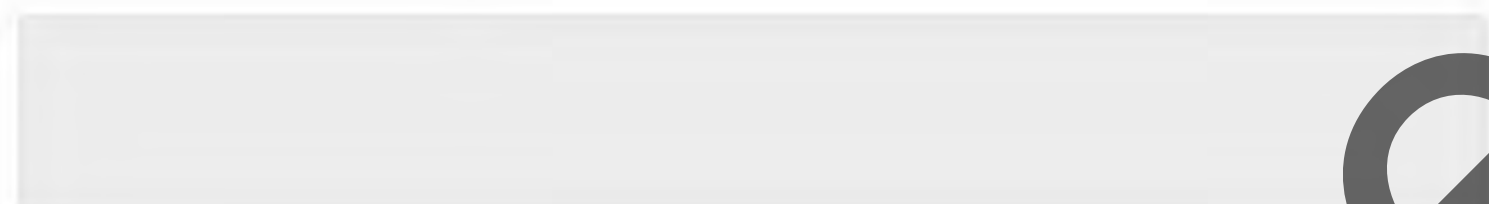


OAK FINISH

9



3 COAT STUCCO VENEER
-SAND FINISH

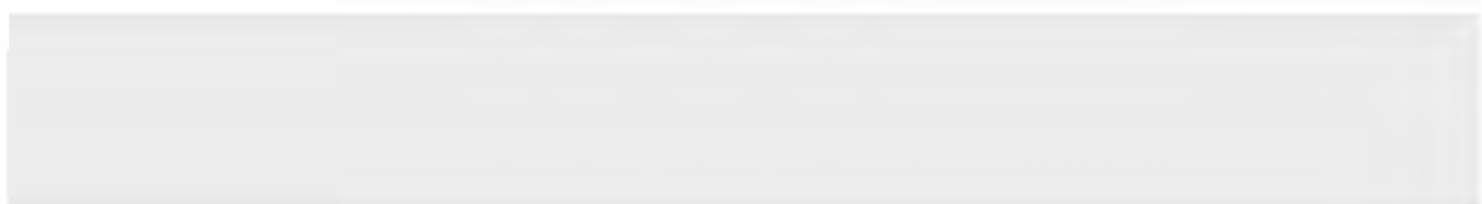


WARM WHITE FINISH

10



METAL FRAME HURRICANE RATED WINDOW SHUTTER/AWNING SYSTEM



WARM WHITE FINISH

11



GRANOFF ARCHITECTS

330 RAILROAD AVENUE
GREENWICH, CT 06830

203.625.9460

WWW.GRANOFFARCHITECTS.COM

FARRELL ESTATES
WELLINGTON

FLORIDA

DATE: 01/05/2024

DRAWING NO.:

LOT 1 - 5,000 SF
MODEL 7

© 2022 GRANOFF ARCHITECTS
These drawings, concepts, designs and ideas are the property of Granoff Architects, P.C.
They may not be copied, reproduced, disclosed to others, or used in connection with any
work other than the specified project for which they were prepared, in whole or in part,
without prior written consent of Granoff Architects, P.C.