



Wellington: A Great Hometown!



Palm Beach County Sheriff's Office Village of Wellington

Law Enforcement Services Plan for FY 2025

Table of Contents

Page 2.....	Table of Contents
Page 3.....	Introduction
Page 3.....	Accomplishments
Page 4.....	Juvenile Crime
Page 5.....	Property Crime
Page 6.....	Crashes
Page 7.....	Conclusion
Page 8.....	FY 2025 Action Plans (Plan I and II)
Page 9.....	FY 2025 Action Plans (Plan III)
Page 10.....	D8 Staffing Allocation
Page 11.....	Allocation Chart

PBSO District 8 Wellington FY 2025: Law Enforcement Services Plan

Introduction

The Palm Beach County Sheriff's Office (PBSO) provides law enforcement services to the Village of Wellington (The Village) and functions as its *police department*. PBSO has provided law enforcement services to The Village since incorporation in 1996, and throughout the years, has made modifications to the Law Enforcement Services Agreement (LESA) based upon the needs of The Village.

The Village and the PBSO LESA contract was renewed for FY (Fiscal Year) 2022 and are in the fourth year of the current five-year contract. Typically, both renew LESA every five years¹. A key element of the current agreement is the requirement for the PBSO to submit an annual Law Enforcement Services Plan (LESP) wherein law enforcement accomplishments, challenges, and future goals are presented. This report is the LESP for FY 2025.

Accomplishments

Annually, law enforcement needs are recognized, addressed, and directed as a result of regular meetings between the District Commander and Village Manager. In addition, ongoing reporting and interactions with the Village Council have resulted in the exchange of ideas that have yielded successful results. These meetings and presentations will continue as an integral part of our LESP in 2025.

As in years past, 2024 has continued to demonstrate that the Village enjoys a low crime rate, a high clearance rate, a low traffic crash rate, as well as infrequent incidents of violent crime. Consequently, as with past LESP's, the reduction of property crimes and traffic crash mitigation will be 2025's primary focus. The use of statistical data to identify crime trends and crash patterns, along with investigative methods should assist in keeping the low rate in both categories. A continuous review of the data will allow enforcement to be deployed in the areas with the highest demand of resources. Should ancillary resources or equipment outside of the district be necessary, specialty units shall be deployed to assist and support the District 8 Deputies.

PBSO District 8 Wellington FY 2025: Law Enforcement Services Plan

Juvenile Crime

The Village, as in previous years, continues to enjoy low, but persistent, juvenile crime issues, property crimes, and traffic related problems. Juveniles continue to be responsible for a portion of the property crimes in the Village (see graph below). Another persistent challenge is the fact that residents leave their cars unsecured, which contributes to the higher incidents of vehicle thefts and burglaries.

Village of Wellington Calendar Year (CY) Arrest Data							
Calendar Year (CY)	Population	Total		Adult		Juvenile	
		Arrests	% of Population	Arrests	% of Total Arrests	Arrests	% of Total Arrests
CY 2019	62,373	480	0.8%	427	89%	53	11%
CY 2020	62,650	342	0.5%	308	90%	34	10%
CY 2021	61,768	396	0.6%	352	89%	44	11%
CY 2022	61,807	476	0.8%	405	85%	71	15%
CY 2023	61,788	350	0.6%	297	85%	53	15%

*** Source: FDLE UCR Calendar Year Arrest Data**

To address all juvenile related crime issues, District 8 will continue to utilize the Juvenile Arrest and Monitoring (JAM) deputy to 1) educate the District’s deputies in keeping them informed about juveniles on probation, and 2) to ensure those juveniles are frequently monitored. Any juveniles found violating their probation are arrested and returned to the Juvenile Assessment Center (JAC). Additionally, we continue to work with the State Attorney’s Office to address particularly troublesome juvenile cases.

The Mall at Wellington Green (The Mall) continues to attract juveniles from surrounding communities, not just to shop, but also to meet, gather, and “hang out.” As in past years, entertainment and eatery expansion attracted crowds of juveniles and related traffic congestion. Expansion related problems were handled by increased patrol, traffic enforcement, and partnering with The Mall’s management and security staff.

In addition to our enforcement strategies, the District’s Community Policing Unit proactively looks to identify families that have juvenile-related problems and work with the Village to support these families with programs.

PBSO District 8 Wellington FY 2025: Law Enforcement Services Plan

Property Crime

Property crimes consist of all burglaries (business, construction site, residential, vehicle) and incidents of graffiti and vandalism. Traditionally, as population increases, so do property crimes. A review of FY 2019 through FY 2023 showed the average Property Crime Rate (PCR) has been holding steady with a 7% decrease for the five year period. The District continues to focus heavily on the Village’s PCR, as it is the principal crime occurring in the Village. Comparing FY 2021 to FY 2022, business and residential burglaries were the only property crimes that saw increases (see graph below).

Vehicle burglaries remain a challenge to the Village (and surrounding jurisdictions), with an 84% increase in reported cases during FY 2023 as compared to FY 2022 (from 97 to 178). Construction burglaries increased by one case. Business burglaries decreased 10% (from 10 to 9), and residential burglaries decreased 24% (from 33 to 25).

The District continues to monitor vehicle burglaries and in its FY 2025 plan, will dedicate crime prevention resources to educate the public on how to mitigate the risk of being victimized and combat the problem with overt and strategic covert operations including the License Plate Reader (LPR) system.

Village of Wellington Fiscal Year (FY) Property Crime Rates * Burglary, Graffiti, and (Vandalism, Incidents)										
	Burglaries				Other Property Crime				Property Crime Rate	
Year	Business	Construction	Residential	Vehicle	Vandalism	Graffiti	Total Property Crime	Annual Population	Per 100 Residents	Increase / Decrease
FY 2019	12	2	44	257	84	3	402	62,373	0.645	-15%
FY 2020	11	0	52	216	48	3	330	62,650	0.527	-18%
FY 2021	8	2	25	99	82	2	218	61,768	0.353	-34%
FY 2022	10	1	33	97	81	1	223	61,807	0.361	2%
FY 2023	9	2	25	178	67	5	286	61,788	0.463	28%
(5) Year Total	50	7	179	847	362	14	1,459			
(5) Year Avg.	10	1	35.8	169	72.4	2.8	291.8	62,077	0.470	-7%

Source: PBSO P1 (Property Crime Cases). Statistics are dynamic and may be subject to change.

*FY19 percentage decrease based on a PCR of .762 for FY18.

Timeframe: FY22 runs from October 1, 2021 - September 30, 2022. FY23 runs from October 1, 2022 - September 30, 2023.

PBSO District 8 Wellington FY 2025: Law Enforcement Services Plan

Crashes

A review of crash cases during a 60-month period - FY 2019 versus FY 2023 - reveals that crashes in the Village still remain 6% below FY 2019 (from 1,348 versus 1,272 cases). During this 60-month period, the Village’s Crash Rate (CR) averaged 1.99 crashes per 100 residents. During FY 2023, total crashes increased 4% compared to FY 2022, increasing the CR to 2.06 from 1.98.

The District is committed to traffic safety and pro-active traffic enforcement. During FY 2025, the District will continue to deploy traffic enforcement staff to high priority areas to help minimize traffic related crashes.

Village of Wellington Fiscal Year (FY) Case Number Crash Statistics *				
Year	Annual Population	Total Crashes	Monthly Average	Crash Rate Per 100 Residents
FY 2019	62,373	1,348	112	2.161
FY 2020	62,650	1,189	99	1.898
FY 2021	61,768	1,145	95	1.854
FY 2022	61,807	1,222	102	1.977
FY 2023	61,788	1,272	106	2.059
(5) Year Total	N/A	6,176	514	N/A
(5) Year Average	62,077	1,235	103	1.990

* Source: PBSO P1 (Crash Statistics include all vehicle crashes and hit and run incidents with case numbers and excludes vehicular homicides for each fiscal year).

Over time, traffic activity damages roadway infrastructure. To prolong the useful life of the roadway system, the Village restricts Commercial Motor Vehicle (CMV) traffic through its borders. Vehicles with more than six wheels are prohibited by Section 54 of the Village’s Code of Ordinances with certain exceptions. However, the use of Village roads as a “cut through” for CMV operators is strictly prohibited, with dump trucks the most frequent offenders.

Additional challenges are presented by illegal waste disposal on local roads and fields. During FY 2023, the District’s CMV deputies stopped 1,698 trucks and placed 212 vehicles and 97 drivers out of service (see graph below). During FY 2025, the CMV deputies will be utilized for targeted traffic interventions as well as manage expected growth in commercial traffic.

PBSO District 8 Wellington FY 2025: Law Enforcement Services Plan

CMV		D/S Cordero and D/S Zeitz											Date:		FISCAL Year 2023 (Oct 1, 2022-Sept 30, 2023)										
Date / Hours		Contacts / Citations / Warnings									Arrests		Sp Detail		Reports			Assists		Vehicles Type				Out-of-Svc	
Date	Hours Worked	Total contacts	Citations - Criminal	Citations - DOT	Citations - State	Warnings- Verbal	Warnings - Written	Stopped	Inspected	Post Crash Inspection	Arrests-Misdemeanor	Arrests - Felony	Special Detail Hours	Training Hours	Offense Reports	Zulu Reports	Crash Reports	10-61's	Back Ups	Weight Case	Other	HazMat	Manure	Driver	Vehicle
Totals	3,940	1,772	66	312	341	772	2,571	1,698	908	5	1	1	813	518	2	3	6	87	400	36	690	37	32	97	212

* Source: District-8 - Monthly CMV Unit Statistics

Conclusion

Juvenile crime, vehicle burglaries, and traffic crashes will continue to be our priorities. The Street Crimes Unit, Community Policing, and Traffic units will remain an active component of our LESP. The following action plans are proposed for FY 2025: Juvenile Crime, Vehicle Burglaries, and Traffic Safety.

Additionally, the District will continue to work with Wellington Community Services to improve conditions in focus areas. Initiatives such as neighborhood cleanups, landlord/tenant communication, neighborhood meetings, walk and talks, and code compliance operations will remain a key part of our strategy.

The Village remains one of the safest municipalities in Palm Beach County and enjoys a low cost for its law enforcement services. Looking ahead to FY 2025 and beyond, the District will continue to provide excellent law enforcement services striving to reduce property crime, increase traffic safety, reduce juvenile issues, and address equestrian concerns. The District looks forward to working with the Village to keep Wellington a “Great Hometown.”

PBSO District 8 Wellington FY 2025: Law Enforcement Services Plan

Action Plans, Goals & Objectives

Plan I- Juvenile Crime

Discussion:

Juvenile crime issues (property crimes) are an ongoing problem and account for at least 15% of all crime arrests in the Village (source: FDLE CY 2023 Arrest Totals). A percentage of these juveniles are not Wellington residents. Effective supervision of, and intervention with, juvenile offenders provides opportunities to reduce property crimes, to reduce juvenile related robberies and to direct juveniles towards non-criminal lifestyles.

Goals:

- Reduce crime through effective supervision of juvenile offenders.
- Use current Village of Wellington programs to redirect the juveniles.

Inputs:

- The District will continue to use the JAM monitoring and enforcement Deputy.
- Aggressively enforce juveniles on probation and visit each at least monthly.
- The JAM Deputy to assist and train Road Patrol Deputies on juvenile probation and enforcement.

Anticipated Outcome/Outputs:

- Reduce juvenile related crimes.

Plan II- Property Crime

Discussion:

The District remains focused on the crime rate and will target vehicle burglaries, robberies, and thefts. The information below will be instrumental in curtailing crime in the Village.

Goal:

- Maintain a low crime rate.
- Educate the citizens in protecting their property.

PBSO District 8 Wellington FY 2025: Law Enforcement Services Plan

Inputs:

- Combined effort of Road Patrol, Street Crimes Unit, Community Policing, and Detectives.
- Use GPS technology.
- Use covert surveillance techniques and equipment.
- Utilize the LPR system.
- Utilize crime mapping and trends to focus efforts on neighborhoods, businesses, etc., where crimes have occurred or complaints have been received.
- Utilize Walk and Talk, Public Service Announcements (PSA), and CEPTD (Crime Prevention Through Environmental Design) surveys of businesses and shopping centers to aid crime prevention and continue to get the word out "not to be an easy victim."

Anticipated Outcome / Outputs:

- During FY 2025, maintain the robberies to 12 or less in the Village.
- During FY 2025, property crimes to remain less than 800 cases.
- During FY 2025, 10% of burglaries to be cleared by arrest.

Plan III- Crashes

Discussion:

Speeding and crashes are consistently the most common complaint. The District is committed to traffic safety and pro-active traffic enforcement. During FY 2025, traffic enforcement staff will be deployed in targeted locations that were identified as hazards and/or areas of concern.

Goal:

- To reduce traffic crashes and minimize traffic fatalities.
- Reduce CMV complaints and illegal dumping.
- Target enforcement of seatbelts and texting while driving.

Inputs:

- Ensure District Motor and Traffic units receive all required training.
- Ensure Motor and Traffic units have all necessary equipment.
- Deploy Motor and Traffic units pursuant to traffic crash patterns and citizen initiated traffic complaints.
- Pay special attention to CMV related challenges.

Anticipated Outcome/Outputs:

- At least 10,000 traffic stops in FY 2025.
- Maintain the Village's Crash Rate at 3.00 or below.

PBSO District 8 Wellington FY 2025: Law Enforcement Services Plan

District 8 Staffing Allocation: FY 2024 versus FY 2025ⁱⁱ

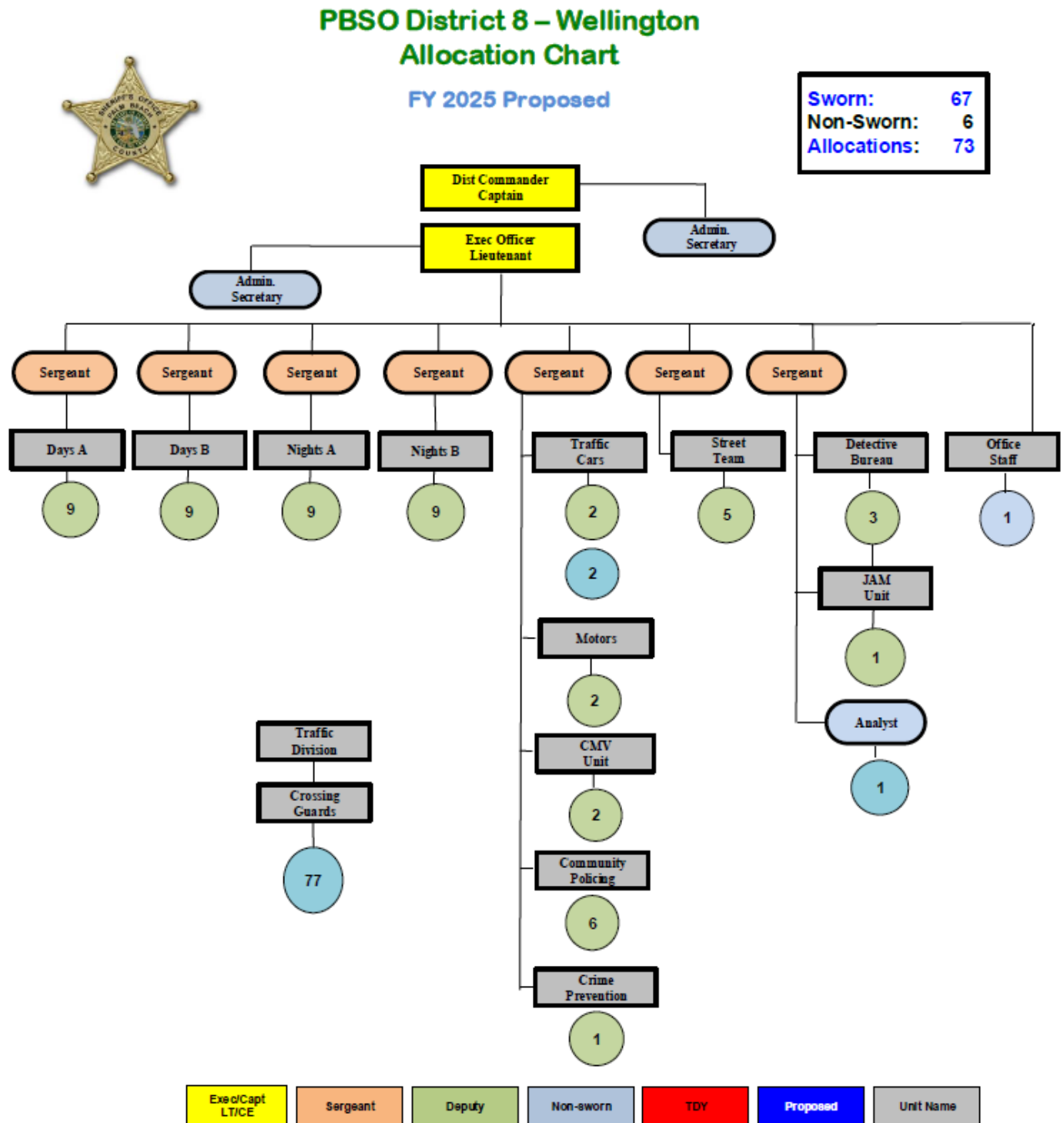
District 8 Staffing Allocation				
Position	Current FY 2024		Proposed FY 2025	
	Allocation Funded by Contract	Allocation Provided by PBSO	Allocation Funded by Contract	Allocation Provided by PBSO
Captain	1		1	
Lieutenant	1		1	
Sergeants	7		7	
Road Patrol Deputy Sheriff	37		36	
Community Policing (CP)	4		4	
Additional CP	0		2	
Crime Prevention	1		1	
Detective Bureau Detective Detective (TDY from PBSO)	3	1	3	1
JAM Deputy	1		1	
Street Team Agent	5		5	
CMV Aggressive Driving Deputy Sheriff	2		2	
Motors Deputy Sheriff	2		2	
Traffic Aggressive Units	2		2	
Community Service Aide	2		2	
Administrative Secretaries	2		2	
Law Enforcement Aide	0		0	
Clerical Specialist	1		1	
Criminal Intelligence Analyst	1		1	
Lobby	1		0	
School Crossing Guard (PT)	77		77	
Total Paid by Wellington	150		150	
Total Provided by PBSO		1		1
Total Staff	150	1	150	1

ⁱThe current five-year agreement runs from October 1, 2021 through September 30, 2026. FY 2025 is the 4th Addendum (or fourth year of the five-year agreement).

ⁱⁱ Annually, the Village provides funding for 77 School Crossing Guards.

PBSO District 8 Wellington FY 2024: Law Enforcement Services Plan

District 8 Staffing Allocation: FY 2024 versus FY 2025ⁱⁱⁱ



ⁱⁱⁱ Annually, the Village provides funding for 77 School Crossing Guards.