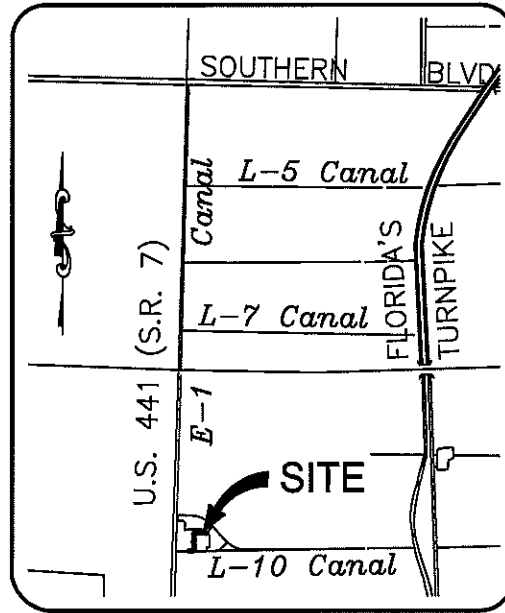


SKETCH OF DESCRIPTION THIS IS NOT A SURVEY

NOT VALID WITHOUT ACCOMPANYING SHEETS 2, 3, 4, 5, 6 & 7



DESCRIPTION:

LOCATION MAP N.T.S.

AN EASEMENT LYING WITHIN THE NORTHWEST ONE QUARTER (NW 1/4) OF SECTION 19, TOWNSHIP 44 SOUTH, RANGE 42 EAST, PALM BEACH COUNTY, FLORIDA, BEING A PORTION OF TRACT "A", OLYMPIA CIVIC SITE, ACCORDING TO THE PLAT THEREOF, RECORDED IN PLAT BOOK 114, PAGES 46 THROUGH 49, INCLUSIVE, OF THE PUBLIC RECORDS OF PALM BEACH COUNTY, FLORIDA, BEING MORE PARTICULARLY DESCRIBED AS FOLLOWS:

COMMENCING AT THE SOUTHWEST CORNER OF SAID NORTHWEST ONE QUARTER (NW 1/4) OF SECTION 19; THENCE ALONG THE WEST LINE OF SAID NORTHWEST ONE QUARTER (NW 1/4) OF SECTION 19, NORTH 02°00'37" EAST, A DISTANCE OF 1341.99 FEET TO THE INTERSECTION OF SAID WEST LINE WITH THE SOUTH LINE OF SAID TRACT "A"; THENCE DEPARTING SAID WEST LINE AND ALONG SAID SOUTH LINE, NORTH 89°01'40" EAST, A DISTANCE OF 572.48 FEET TO THE POINT OF BEGINNING; THENCE DEPARTING SAID SOUTH LINE, NORTH 01°21'26" WEST, A DISTANCE OF 20.00 FEET; THENCE NORTH 89°01'40" EAST, A DISTANCE OF 192.78 FEET; THENCE NORTH 02°14'27" EAST, A DISTANCE OF 79.12 FEET; THENCE NORTH 04°45'52" EAST, A DISTANCE OF 98.23 FEET; THENCE NORTH 12°47'26" WEST, A DISTANCE OF 52.68 FEET; THENCE NORTH 06°25'40" WEST, A DISTANCE OF 64.63 FEET; THENCE NORTH 31°35'47" WEST, A DISTANCE OF 29.67 FEET; THENCE SOUTH 58°24'13" WEST, A DISTANCE OF 9.36 FEET; THENCE NORTH 31°35'47" WEST, A DISTANCE OF 20.00 FEET; THENCE NORTH 58°24'13" EAST, A DISTANCE OF 9.36 FEET; THENCE NORTH 31°35'47" WEST, A DISTANCE OF 4.09 FEET; THENCE NORTH 46°13'34" EAST, A DISTANCE OF 61.77 FEET; THENCE NORTH 08°49'16" EAST, A DISTANCE OF 10.17 FEET; THENCE NORTH 12°53'38" WEST, A DISTANCE OF 59.92 FEET; THENCE NORTH 06°15'52" WEST, A DISTANCE OF 105.55 FEET; THENCE NORTH 02°19'20" EAST, A DISTANCE OF 57.48 FEET; THENCE SOUTH 89°30'18" WEST, A DISTANCE OF 3.77 FEET; THENCE NORTH 00°29'42" WEST, A DISTANCE OF 28.62 FEET TO A POINT ON THE SOUTH LINE OF A PALM

DESCRIPTION CONTINUED ON SHEET 2

REVISED: 07-22-14

EXHIBIT "A"

<div style="writing-mode: vertical-rl; transform: rotate(180deg);"> 1 7 </div>	DATE	07-11-14
	SCALE	NONE
	CAD FILE	99090.113SK01.DWG
	PROJECT	99090.113
JOB NO.	DRAWN	STAFF
99090.113	CHECKED	K.BECK

©COPYRIGHT YEAR
ENGINEERING GROUP, INC. THIS
DRAWING IS PROVIDED FOR
INFORMATIONAL PURPOSES
ONLY, UNLESS SIGNED AND
SEALED BY A REGISTERED
PROFESSIONAL SURVEYOR AND
MAPPER REPRESENTING
ENGINEERING GROUP, INC.

SKETCH AND DESCRIPTION
FOR PALM BEACH COUNTY
WATER UTILITIES DEPARTMENT
WATERLINE EASEMENT

A Higher Standard of Excellence
engenuity
group inc.
ENGINEERS • SURVEYORS • GIS MAPPERS

1250 N. CONGRESS AVE., SUITE 101, WEST PALM BEACH, FLORIDA 33409
PH (561) 985-1191 • FAX (561) 982-9390 • WWW.ENGENUTYGROUP.COM

**SKETCH OF DESCRIPTION THIS
IS NOT A SURVEY**
NOT VALID WITHOUT ACCOMPANYING SHEETS 1, 3, 4, 5, 6 & 7

EXHIBIT "A"

DESCRIPTION CONTINUED

BEACH COUNTY UTILITY EASEMENT RECORDED IN OFFICIAL RECORD BOOK 21039, PAGE 1769 OF THE AFOREMENTIONED PUBLIC RECORDS OF PALM BEACH COUNTY, FLORIDA; THENCE ALONG SAID SOUTH LINE, NORTH 88°31'31" EAST, A DISTANCE OF 36.62 FEET; THENCE DEPARTING SAID SOUTH LINE, SOUTH 00°55'46" EAST, A DISTANCE OF 7.38 FEET; THENCE NORTH 84°49'33" EAST, A DISTANCE OF 5.22 FEET; THENCE NORTH 77°25'33" EAST, A DISTANCE OF 125.43 FEET; THENCE NORTH 84°46'50" EAST, A DISTANCE OF 7.09 FEET; THENCE NORTH 05°13'10" WEST, A DISTANCE OF 6.14 FEET; THENCE NORTH 84°46'50" EAST, A DISTANCE OF 20.00 FEET; THENCE SOUTH 05°13'10" EAST, A DISTANCE OF 6.14 FEET; THENCE NORTH 84°46'50" EAST, A DISTANCE OF 38.71 FEET; THENCE NORTH 89°57'52" EAST, A DISTANCE OF 180.60 FEET; THENCE SOUTH 81°43'31" EAST, A DISTANCE OF 7.53 FEET; THENCE NORTH 05°48'23" EAST, A DISTANCE OF 17.58 FEET TO A POINT ON THE NORTHERLY LINE OF THE AFOREMENTIONED TRACT "A" OF OLYMPIA PARK; THENCE ALONG SAID NORTHERLY LINE, SOUTH 43°22'19" EAST, A DISTANCE OF 53.72 FEET; THENCE NORTH 47°11'00" EAST, A DISTANCE OF 20.26 FEET; THENCE DEPARTING SAID NORTHERLY LINE, SOUTH 81°43'31" EAST, A DISTANCE OF 36.21 FEET TO A POINT ON THE EAST LINE OF SAID TRACT "A", SAID POINT ALSO BEING ON THE WEST LINE OF A PALM BEACH COUNTY UTILITY EASEMENT RECORDED IN OFFICIAL RECORD BOOK 15652, PAGE 1678 OF SAID PUBLIC RECORDS OF PALM BEACH COUNTY; THENCE ALONG SAID EAST AND WEST LINES, SOUTH 42°49'00" EAST, A DISTANCE OF 31.84 FEET; THENCE DEPARTING SAID EAST AND WEST LINES, NORTH 81°43'31" WEST, A DISTANCE OF 121.16 FEET; THENCE SOUTH 89°57'52" WEST, A DISTANCE OF 70.71 FEET; THENCE SOUTH 00°02'08" EAST, A DISTANCE OF 12.01 FEET; THENCE SOUTH 89°57'52" WEST, A DISTANCE OF 20.00 FEET; THENCE NORTH 00°02'08" WEST, A DISTANCE OF 12.01 FEET; THENCE SOUTH 89°57'52" WEST, A DISTANCE OF 87.53 FEET; THENCE SOUTH 84°46'50" WEST, A DISTANCE OF 63.62 FEET; THENCE SOUTH 77°25'33" WEST, A DISTANCE OF 125.44 FEET; THENCE SOUTH 84°49'33" WEST, A DISTANCE OF 21.03 FEET; THENCE SOUTH 02°19'20" WEST, A DISTANCE OF 57.71 FEET; THENCE SOUTH 06°15'52" EAST, A DISTANCE OF 102.89 FEET; THENCE SOUTH 12°53'38" EAST, A DISTANCE OF 62.59 FEET; THENCE SOUTH 08°49'16" WEST, A DISTANCE OF 20.77 FEET; THENCE SOUTH 46°13'34" WEST, A DISTANCE OF 52.40 FEET; THENCE SOUTH 31°35'47" EAST, A DISTANCE OF 42.08 FEET; THENCE SOUTH 06°25'40" EAST, A DISTANCE OF 67.99 FEET; THENCE SOUTH 12°47'26" EAST, A DISTANCE OF 54.65 FEET; THENCE SOUTH 04°45'52" WEST, A DISTANCE OF 100.87 FEET; THENCE SOUTH 02°14'27" WEST, A DISTANCE OF 97.59 FEET TO A POINT ON THE SOUTH LINE OF THE AFOREMENTIONED AFOREMENTIONED TRACT "A" OF OLYMPIA PARK; THENCE ALONG SAID SOUTH LINE, SOUTH 89°01'40" WEST, A DISTANCE OF 211.55 FEET TO THE POINT OF BEGINNING.

CONTAINING 28,305.20 SQUARE FEET OR 0.65 ACRES, MORE OR LESS.

REVISED: 07-22-14

SHEET NO.	2	DATE	07-11-14
	7	SCALE	NONE
		CAD FILE	99090.113SK01.DWG
		PROJECT	99090.113
JOB NO.	99090.113		
DRAWN	STAFF		
CHECKED	K.BECK		

©COPYRIGHT YEAR BY
ENGENUITY GROUP, INC. THIS
DRAWING IS PROVIDED FOR
INFORMATIONAL PURPOSES
ONLY, UNLESS SIGNED AND
SEALED BY A REGISTERED
PROFESSIONAL SURVEYOR AND
MAPPER REPRESENTING
ENGENUITY GROUP, INC.

**SKETCH AND DESCRIPTION
FOR PALM BEACH COUNTY
WATER UTILITIES DEPARTMENT
WATERLINE EASEMENT**

A Higher Standard of Excellence
engenuity
group inc.
ENGINEERS • SURVEYORS • GIS MAPPERS

1220 N. CONGRESS AVE., SUITE 101, WEST PALM BEACH, FLORIDA 33411
PH (561)655-1101 • FAX (561)655-6380 • WWW.ENGENUITYGROUP.COM

**SKETCH OF DESCRIPTION THIS
IS NOT A SURVEY**

EXHIBIT "A"

NOT VALID WITHOUT ACCOMPANYING SHEETS 1, 2, 4, 5, 6 & 7

NOTES:

1. NO SEARCH OF THE PUBLIC RECORDS HAS BEEN MADE BY ENGENUITY GROUP, INC.
2. THIS SKETCH IS BASED ON INFORMATION FURNISHED BY CLIENT OR CLIENT'S REPRESENTATIVE.
3. THIS SKETCH IS NOT VALID WITHOUT THE ORIGINAL SIGNATURE AND RAISED SEAL OF A FLORIDA LICENSED SURVEYOR AND MAPPER.
4. BEARINGS SHOWN HEREON ARE BASED UPON WEST LINE OF THE NORTHWEST ONE-QUARTER (NW 1/4) OF SECTION 19, TOWNSHIP 44 SOUTH, RANGE 42 EAST, PALM BEACH COUNTY, FLORIDA, THE CALCULATED GRID BEARING BEING N02°00'37"E ALL OTHER BEARINGS ARE RELATIVE THERETO.
5. COORDINATES SHOWN HEREON ARE BASED ON THE FLORIDA STATE PLANE COORDINATE GRID, EAST ZONE, USING THE NORTH AMERICAN DATUM OF 1983 WITH THE 1990 ADJUSTMENT (NAD 83-90). SCALE FACTOR: 1.00001868
GROUND DISTANCE X SCALE FACTOR = GRID DISTANCE
6. THIS SKETCH AND DESCRIPTION IS BASED ON PAINT MARKS PROVIDED BY OTHERS AND LOCATED BY ENGENUITY GROUP, INC. ON MAY 27, 2014.
7. THE COORDINATES SHOWN HEREON FOR THE SOUTHWEST CORNER OF THE NORTHWEST ONE-QUARTER AND THE NORTHWEST CORNER OF SECTION 19, TOWNSHIP 44 SOUTH, RANGE 42 EAST, PALM BEACH COUNTY, FLORIDA, WERE OBTAINED FROM THE PALM BEACH COUNTY SURVEY SECTION.

LEGEND

(C)	CALCULATED
ESMT	EASEMENT
FPL	FLORIDA POWER AND LIGHT
N'RLY	NORTHERLY
ORB	OFFICIAL RECORD BOOK
PB	PLAT BOOK
PBCUE	PALM BEACH COUNTY UTILITY EASEMENT
PG(S)	PAGE(S)
⊙	CENTERLINE

SURVEYOR'S CERTIFICATE

I HEREBY CERTIFY THAT THE SKETCH REPRESENTED
HEREON COMPLIES WITH THE MINIMUM TECHNICAL
STANDARDS, AS SET FORTH BY THE FLORIDA BOARD
OF SURVEYORS AND MAPPERS PURSUANT TO
SECTION 472.027 FLORIDA STATUTES.



KEVIN M. BECK, P.S.M.
PROFESSIONAL SURVEYOR AND MAPPER
STATE OF FLORIDA LICENSE NO. 6168
STATE OF FLORIDA LB#6603

REVISED: 07-22-14

3 7	DATE	06-12-14
	SCALE	NONE
	CAD FILE	99090.113SK01
	PROJECT	99090.113
JOB NO. 99090.113	DRAWN	STAFF
	CHECKED	K.BECK

©COPYRIGHT YEARLY
ENGENUITY GROUP, INC. THIS
DRAWING IS PROVIDED FOR
INFORMATIONAL PURPOSES
ONLY, UNLESS SIGNED AND
SEALED BY A REGISTERED
PROFESSIONAL SURVEYOR AND
MAPPER REPRESENTING
ENGENUITY GROUP, INC.

**SKETCH AND DESCRIPTION
FOR PALM BEACH COUNTY
WATER UTILITIES DEPARTMENT
WATERLINE EASEMENT**

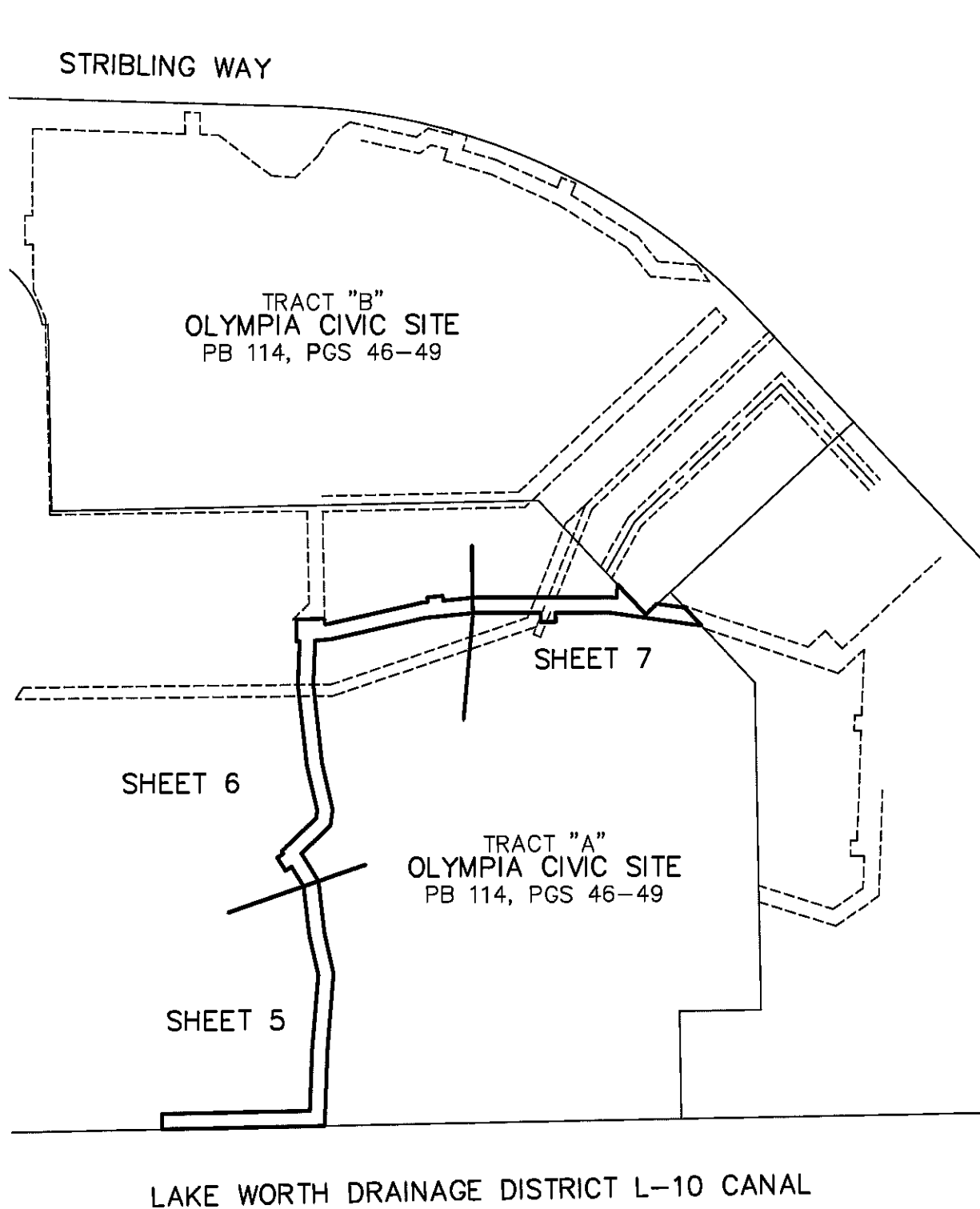


1280 N. CONGRESS AVE., SUITE 101, WEST PALM BEACH, FLORIDA 33409
PH (561) 955-1101 • FAX (561) 932-9390 • WWW.ENGENUITYGROUP.COM

SKETCH OF DESCRIPTION THIS IS NOT A SURVEY

EXHIBIT "A"

NOT VALID WITHOUT ACCOMPANYING SHEETS 1, 2, 3, 5, 6 & 7



SHEET INDEX MAP NOT TO SCALE

REVISED: 07-22-14

SHEET NO.	4	DATE	07-11-14
	7	SCALE	NONE
		CAD FILE	99090.113SK01.DWG
		PROJECT	99090.113
JOB NO.	99090.113	DRAWN	STAFF
		CHECKED	K.BECK

©COPYRIGHT YEAR BY
ENGENUITY GROUP, INC. THIS
DRAWING IS PROVIDED FOR
INFORMATIONAL PURPOSES
ONLY, UNLESS SIGNED AND
SEALED BY A REGISTERED
PROFESSIONAL SURVEYOR AND
MAPPER REPRESENTING
ENGENUITY GROUP, INC.

SKETCH AND DESCRIPTION
FOR PALM BEACH COUNTY
WATER UTILITIES DEPARTMENT
WATERLINE EASEMENT

A Higher Standard of Excellence
engenuity group inc.
ENGINEERS • SURVEYORS • GIS MAPPERS

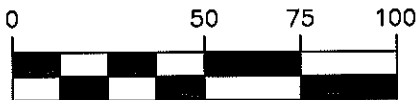
1280 N. CONGRESS AVE., SUITE 101, WEST PALM BEACH, FLORIDA 33405
PH (561)835-1101 • FAX (561)832-0380 • WWW.ENGENUITYGROUP.COM

SKETCH OF DESCRIPTION THIS IS NOT A SURVEY

EXHIBIT "A"

NOT VALID WITHOUT ACCOMPANYING SHEETS 1, 2, 3, 4, 6 & 7

GRAPHIC SCALE



SCALE: 1"=50'

MATCH LINE - SEE SHEET 6

13
18
24
19

NE CORNER OF
SECTION 19,
TOWNSHIP 44 S,
RANGE 42 E

W LINE OF THE NW 1/4
SECTION 19, TOWNSHIP 44 S,
RANGE 42 E

TRACT "A"
OLYMPIA CIVIC SITE
PB 114, PGS 46-49

N01°21'26"W
20.00'

N 836276.27
E 916779.71

N89°01'40"E 192.78'

POINT OF BEGINNING

N89°01'40"E 572.48'

S89°01'40"W 211.55'

N 836256.27
E 916780.18

S LINE TRACT "A"
PB 114, PGS 46-49

LAKE WORTH DRAINAGE
DISTRICT L-10 CANAL
ORB 1585, PG 505

POINT OF COMMENCEMENT

SW 1/4 OF SECTION 19,
TOWNSHIP 44 S, RANGE 42 E

REVISED: 07-22-14

5	DATE	07-11-14
7	SCALE	1"=50'
	CAD FILE	99090.113SK01.DWG
	PROJECT	99090.113
JOB NO.	DRAWN	STAFF
99090.113	CHECKED	K.BECK

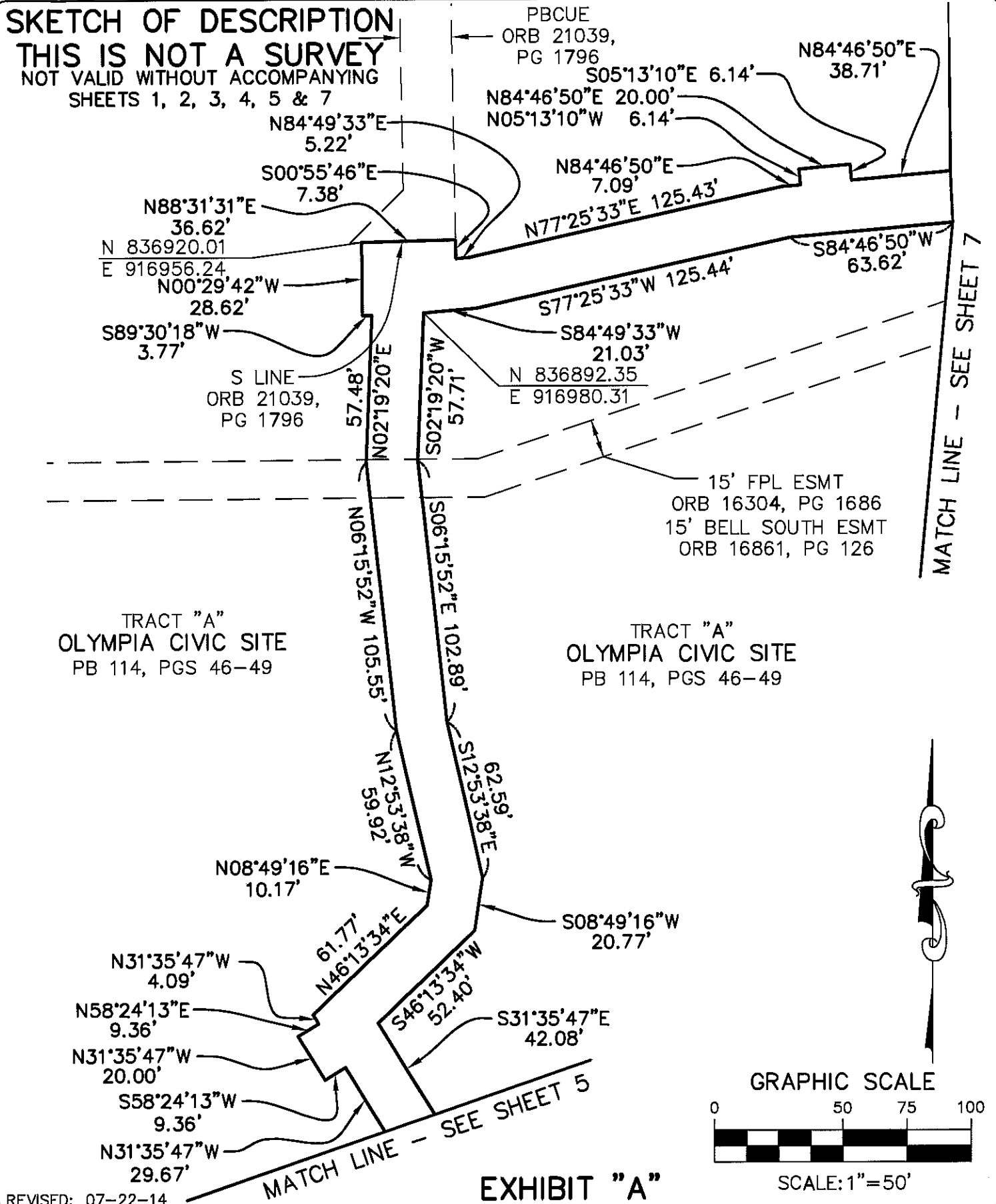
©COPYRIGHT YEARLY
ENGUITY GROUP, INC. THIS
DRAWING IS PROVIDED FOR
INFORMATIONAL PURPOSES
ONLY. UNLESS SIGNED AND
SEALED BY A REGISTERED
PROFESSIONAL SURVEYOR AND
MAPPER REPRESENTING
ENGUITY GROUP, INC.

SKETCH AND DESCRIPTION
FOR PALM BEACH COUNTY
WATER UTILITIES DEPARTMENT
WATERLINE EASEMENT

A Higher Standard of Excellence
engenuity
group inc.
SURVEYORS • DRAINAGERS • GIS MAPPERS

1200 N. CONGRESS AVE., SUITE 101, WEST PALM BEACH, FLORIDA 33406
PH (561)866-1101 • FAX (561)862-9360 • WWW.ENGUITYGROUP.COM

SKETCH OF DESCRIPTION THIS IS NOT A SURVEY NOT VALID WITHOUT ACCOMPANYING SHEETS 1, 2, 3, 4, 5 & 7



6	DATE	07-11-14
7	SCALE	1"=50'
JOB NO.	CAD FILE	99090.113SK01.DWG
99090.113	PROJECT	99090.113
DRAWN	STAFF	
CHECKED	K.BECK	

©COPYRIGHT YEARLY
ENGENUITY GROUP, INC. THIS
DRAWING IS PROVIDED FOR
INFORMATIONAL PURPOSES
ONLY, UNLESS SIGNED AND
SEALED BY A REGISTERED
PROFESSIONAL SURVEYOR AND
MAPPER REPRESENTING
ENGENUITY GROUP, INC.

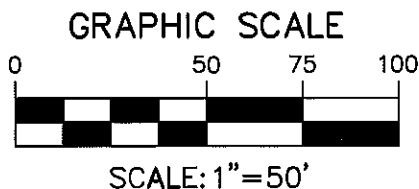
**SKETCH AND DESCRIPTION
FOR PALM BEACH COUNTY
WATER UTILITIES DEPARTMENT
WATERLINE EASEMENT**

A Higher Standard of Excellence
engenuity group inc.
ENGINEERS • SURVEYORS • GIS MAPPERS

1280 N. CONGRESS AVE., SUITE 101, WEST PALM BEACH, FLORIDA 33405
PH (561)982-1101 • FAX (561)932-0380 • WWW.ENGENUITYGROUP.COM

SKETCH OF DESCRIPTION THIS IS NOT A SURVEY

NOT VALID WITHOUT ACCOMPANYING SHEETS 1, 2, 3, 4, 5 & 6



TRACT "B"
OLYMPIA CIVIC SITE
PB 114, PGS 46-49

PBCUE
ORB 21039,
PG 1796

TRACT "A"
OLYMPIA CIVIC SITE
PB 114, PGS 46-49

20' DE
PB 114,
PGS 46-49

10' BELL SOUTH ESMT
ORB 16714, PG 1416
ORB 17161, PG 795

TRACT "C"
OLYMPIA CIVIC SITE
PB 114,
PGS 46-49

N 836933.37
E 917463.55
PBCUE
ORB 15652,
PG 1678

SEE SHEET 6

MATCH LINE -

N89°57'52"E 180.60'

S81°43'31"E
7.53'

N05°48'23"E
17.58'

N47°11'00"E
20.26'

N'RLY LINE TRACT "A"
PB 114, PGS 46-49

S89°57'52"W
87.53'

S89°57'52"W
70.71'

N81°43'31"W
121.16'

S00°02'08"E
12.01'

S89°57'52"W
20.00'

S81°43'31"E
36.21'
S42°49'00"E
31.84'

15' FPL ESMT
ORB 16304, PG 1686
15' BELL SOUTH ESMT
ORB 16861, PG 126

N00°02'08"W
12.01'

N 836910.01
E 917485.19

TRACT "A"
OLYMPIA CIVIC SITE
PB 114, PGS 46-49

E LINE TRACT "A"
PB 114, PGS 46-49

EXHIBIT "A"

REVISED: 07-22-14

7	DATE	07-11-14
	SCALE	1"=50'
7	CAD FILE	99090.113sk01.DWG
	PROJECT	99090.113
JOB NO. 99090.113	DRAWN	STAFF
	CHECKED	K.BECK

©COPYRIGHT YEAR
ENGENUITY GROUP, INC. THIS
DRAWING IS PROVIDED FOR
INFORMATIONAL PURPOSES
ONLY, UNLESS SIGNED AND
SEALED BY A REGISTERED
PROFESSIONAL SURVEYOR AND
MAPPER REPRESENTING
ENGENUITY GROUP, INC.

SKETCH AND DESCRIPTION
FOR PALM BEACH COUNTY
WATER UTILITIES DEPARTMENT
WATERLINE EASEMENT

A Higher Standard of Excellence
engenuity inc.
ENGINEERS • SURVEYORS • GIS MAPPERS

1220 N. CONGRESS AVE., SUITE 101, WEST PALM BEACH, FLORIDA 33409
PH (561) 835-1151 • FAX (561) 832-8390 • WWW.ENGENUITYGROUP.COM