



MORE LIGHT

School Zone Speed Program

© Copyright Jenoptik. All rights reserved.

CONFIDENTIAL

- Florida State Statute 316.1906 Amendment (HB657/588)
- Authorizes installation of automated speed detection systems in school zones:
 - Enforce school zone speed limits for violations in excess of 10 MPH.
 - Requires signage-warning motorists that speed detection systems are in use.
 - Requires a public awareness campaign prior to commencing enforcement of school zone speed limits with speed detection systems.
 - Enforcement can be 30-minutes prior, during, and 30-minutes after school session.
 - Provides procedures for hearings regarding these violations.
 - No points are assessed.



School Zone Safety

Speeding in Florida school zones is a serious safety concern affecting our children and pedestrians, leading to numerous injuries and deaths annually.

Florida ranked as the second-most dangerous state for pedestrians in 2024*.

The Village of Wellington takes this issue seriously and to help support the Vision Zero Action Plan we will be implementing new school speed zone program.

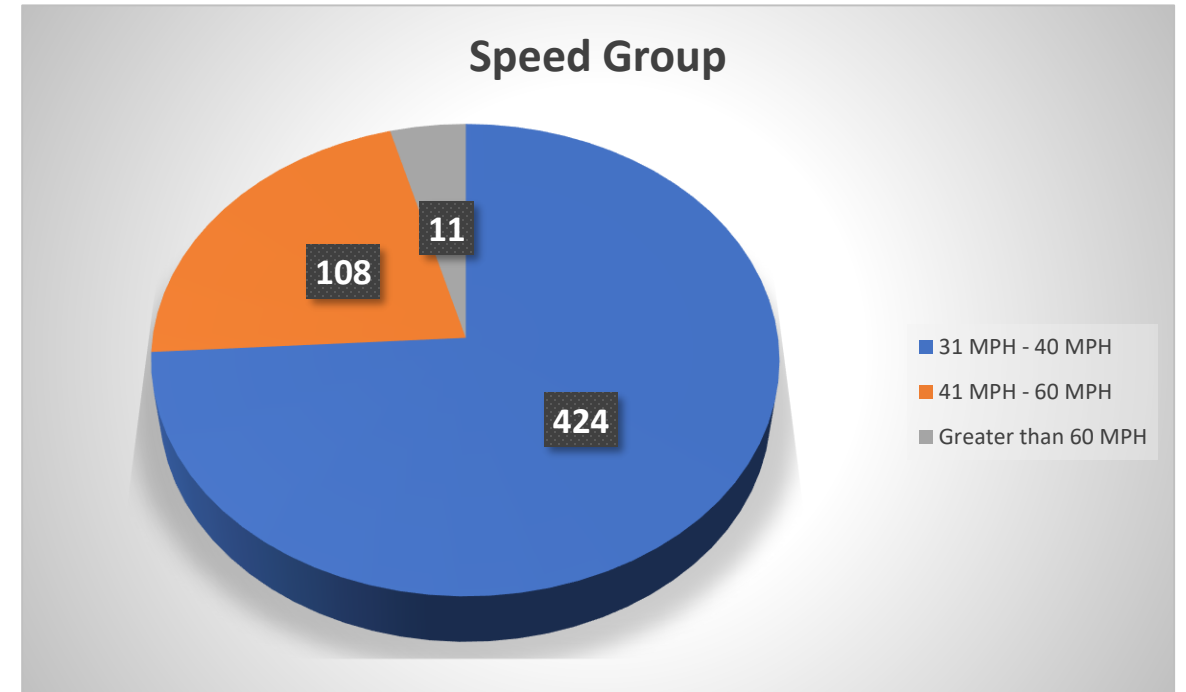
*National Highway and Safety Administration (NHTSA) (2024). Fatality Analysis Reporting System.
<https://smartgrowthamerica.org/dangerous-by-design/state-of-the-states/>



School Zone Speed Study

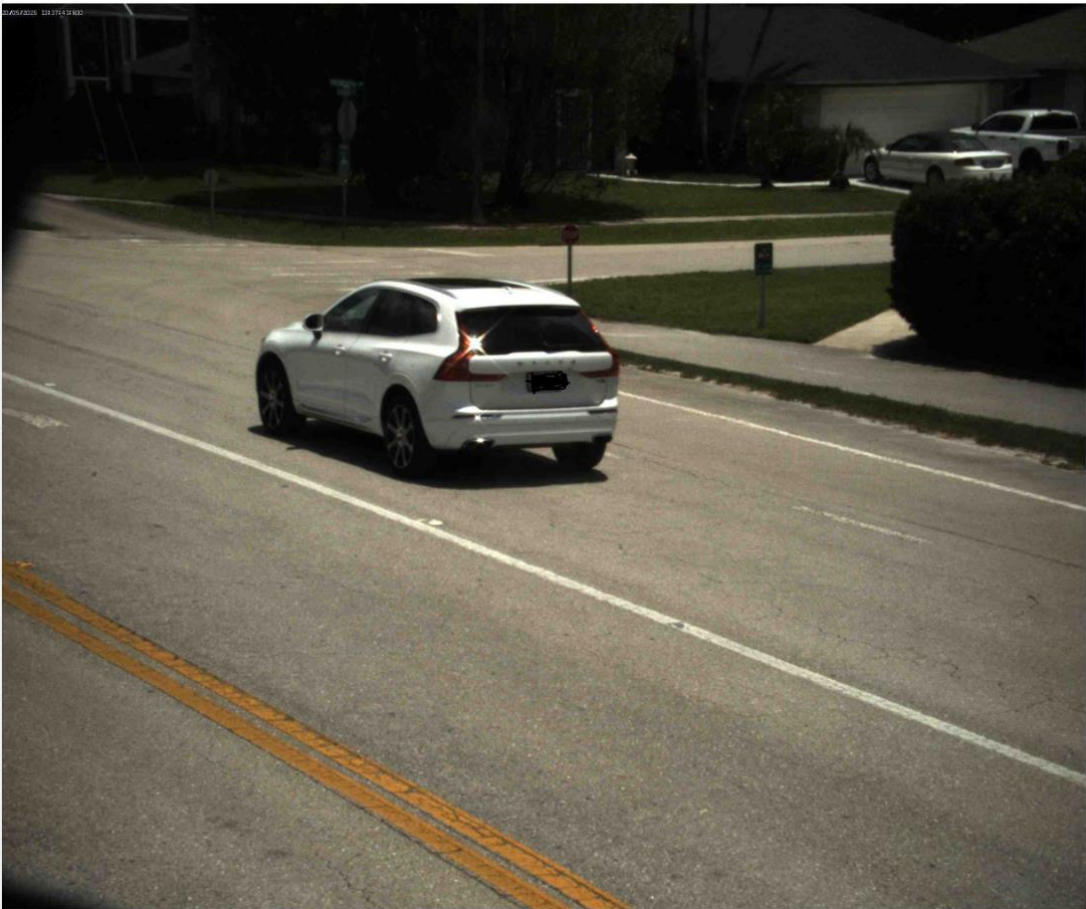
A recent study conducted **during drop-off and pickup hours** in two school zones in the Village of Wellington over a 14-day period:

- 543 vehicles were speeding over 31 MPH during in a 20-MPH speed zone.
- 108 (20%) vehicles were speeding between 41 MPH to 60 MPH.
- 11(2%) greater than 60 MPH



Speed	Total	%
31 MPH - 40 MPH	424	78%
41 MPH - 60 MPH	108	20%
Greater than 60 MPH	11	2%
Totals	543	100%

School Zone Speed Sample



Camera: Trailer E2744 Cam 1, lane 1
System: Trailer E2744, Cam 1
Time/Date: 2025-05-20 13:37:41
Latitude: 26.644
Longitude: -80.2671
Direction: Away
Country: US
Make: Volvo
Model: XC60
Colour: WHITE
Description: Unknown

Spot Speed Record

Device 1 Type	Radar
Device 1 Speed	40 mph
Device 1 Timestamp	20/05/2025 13:37:41
Device 1 Model	24F_ST_3
Device 1 Serial	590-113/67948
Device 1 Firmware	G1J
Speed Threshold	31 mph
Legal Speed Limit	20 mph
Enforceable Candidate	True
Operating Status	Enforcement
Enforcement Status	Enforcement
Status Sub-Type	
Is Infraction?	True

School Zone Speed Sample Video



6/4/2025

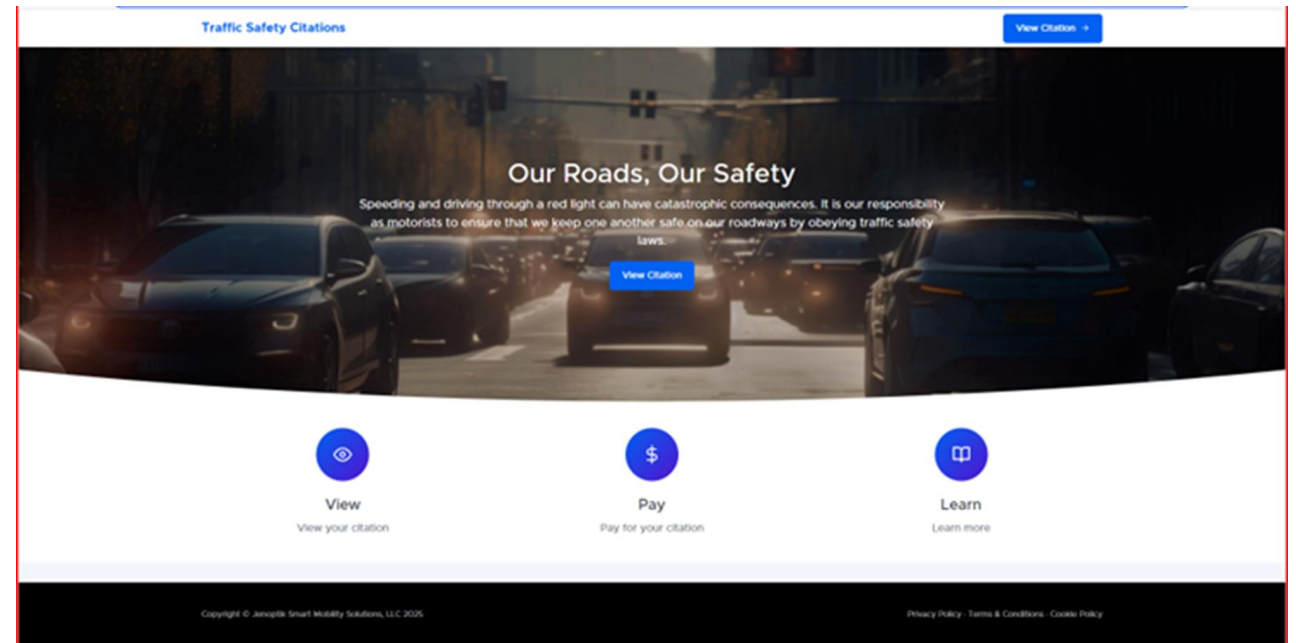
Schools List & Preliminary Enforcement Hours

School	Start	End
Binks Forest Elementary	7:00am	2:25pm
Elbridge Gale Elementary	7:00am	2:35pm
Emerald Cove Middle	8:30am	4:35pm
Equestrian Trails Elementary	7:00am	2:35pm
New Horizons Elementary	7:00am	2:35pm
Panther Run Elementary	7:00am	2:35pm
Polo Park Middle	8:30am	4:35pm
Somerset	7:00am	4:00pm
Wellington Elementary	7:00am	2:35pm
Wellington High School	6:15am	3:20pm
Wellington Landings Middle	8:30am	4:35pm



Start Date & Warning Period

- 30-day warning period – August 11th
 - Warning violations will be issued and mailed out
- After the 30-day warning period:
 - Violations will be issued and mailed out
 - Violator has 30 days to pay or contest
- Payments can be made:
 - Online by visiting www.trafficsafetycitations.com



Village of Wellington's Public Education Campaign

Program awareness starts in July:

- **Dedicated "School Zone Safety Camera Program" webpage with contact email address:**
schoolzonesafety@wellingtonfl.gov
 - Homepage rotator graphic (linking to the main School Zone Safety Camera Program info page)
 - Alert Banner activated (notifying website visitors when enforcement will begin)
- **QR code to webpage on all key elements**
- **To be included in Letter to Principals**
 - Include a flyer for principals to email/share with parents
 - Suggestion to place a notice on school marquee signs
 - Suggestion to share with PTA Groups



Village of Wellington's Public Education Campaign

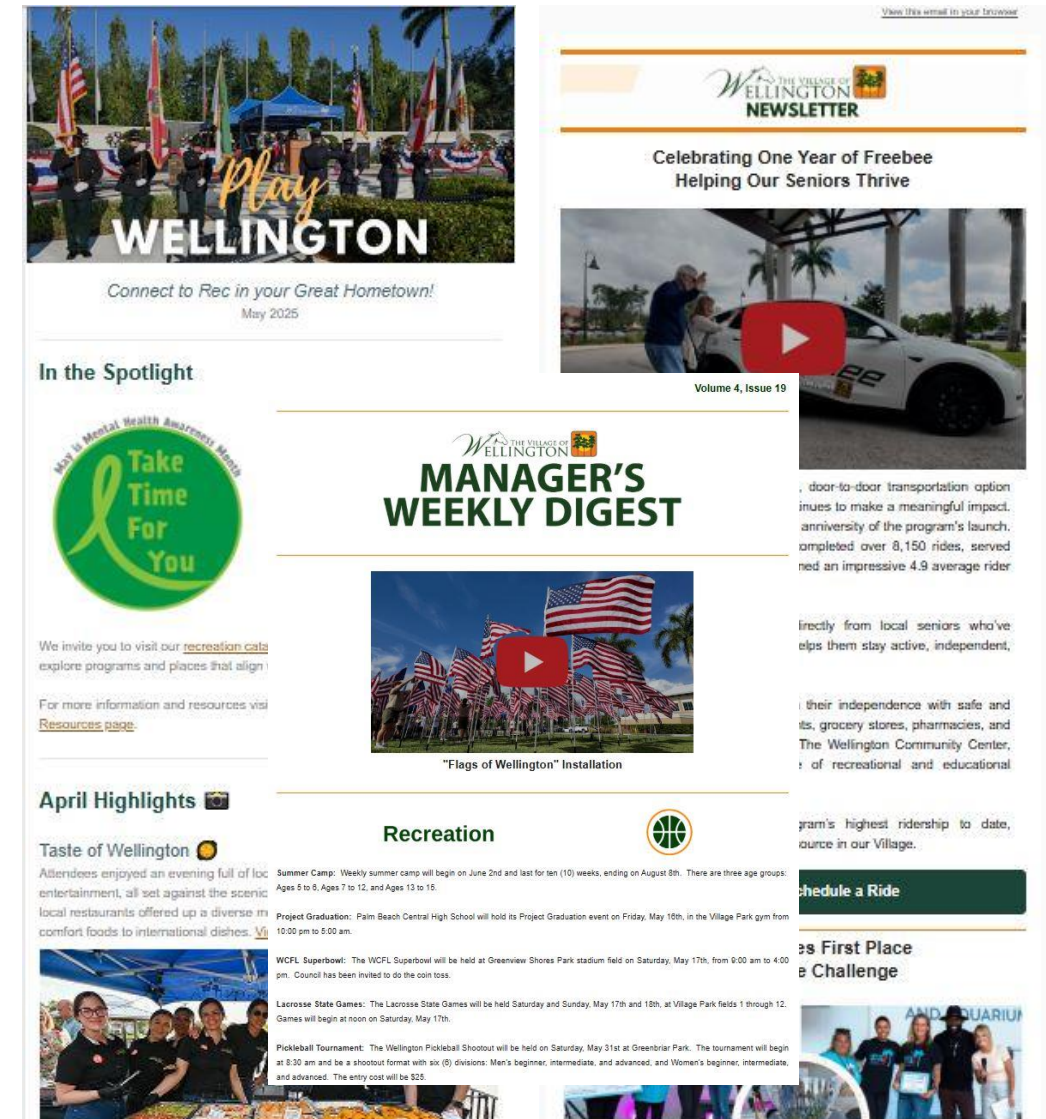
Program awareness starts in July:

- **Monthly e-Newsletters**

- Wellington Latest News
- Play Wellington Newsletter
- Manager's Weekly Digest Newsletter

- **Village Facilities w/flyers and sandwich boards:**

- Town Center
- Village Hall
- Community Center
- Amphitheater
- Village Park



Village of Wellington's Public Education Campaign

Program awareness starts in July:

- **Social media announcements**

- **Wellington's senior population:**

- Signage at the Wellington Community Center (a popular place for senior programs and activities)
- Senior Lunches (held monthly and attended by 200+ seniors) at the community center
- Senior breakfasts (happening daily) at the community center

- **Possible Community Partners:**

- The Mall at Wellington Green
- Wellington Library (key location next to Elbridge Gale Elementary School)
- Equestrian venues
- Etc.



T H E M A L L A T
W E L L I N G T O N G R E E N

Village of Wellington's Public Education Campaign



Upcoming Community Events:

Juneteenth & World Sickle Cell Day Celebration

Saturday, June 14th 4 PM - 8 PM
Wellington Amphitheater

Wellington Lakeside Market

Every Thursday from 5 PM to 9 PM
Wellington Amphitheater

Food Truck & Music Series

Every Thursday from 5 PM to 9 PM
Wellington Amphitheater

July 4th Celebration

Friday, July 4th
Village Park

Back-to-School Party in the Park

Saturday, August 1, 2025 from 5:00 PM to 8:00 PM
Wellington Amphitheater



MORE LIGHT

Thank you.