

State Road 30

Southern Blvd

**Legend**

- Municipal Boundaries
- Equestrian Preserve Area
- Urban Service Boundary

**Residential**

	A 1 d.u./10 acre	Low Density
	B 0.1 d.u./acre - 1.0 d.u./acre	
	C 1.01 d.u./acre - 3.0 d.u./acre	
	D 3.01 d.u./acre - 5.0 d.u./acre	Medium Density
	E 5.01 d.u./acre - 8.0 d.u./acre	
	F 8.01 d.u./acre - 12.0 d.u./acre	
	G 12.01 d.u./acre - 18.0 d.u./acre	High Density
	H 18.01 d.u./acre - 22.0 d.u./acre	

**Commercial**

- Commercial
- Equestrian Commercial Recreation
- Open Space Recreation

**Mixed Use**

- Mixed Use
- Regional Commercial / LSMU

**Flex**

- Flex

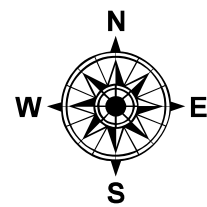
**Community Facility**

- Community Facilities

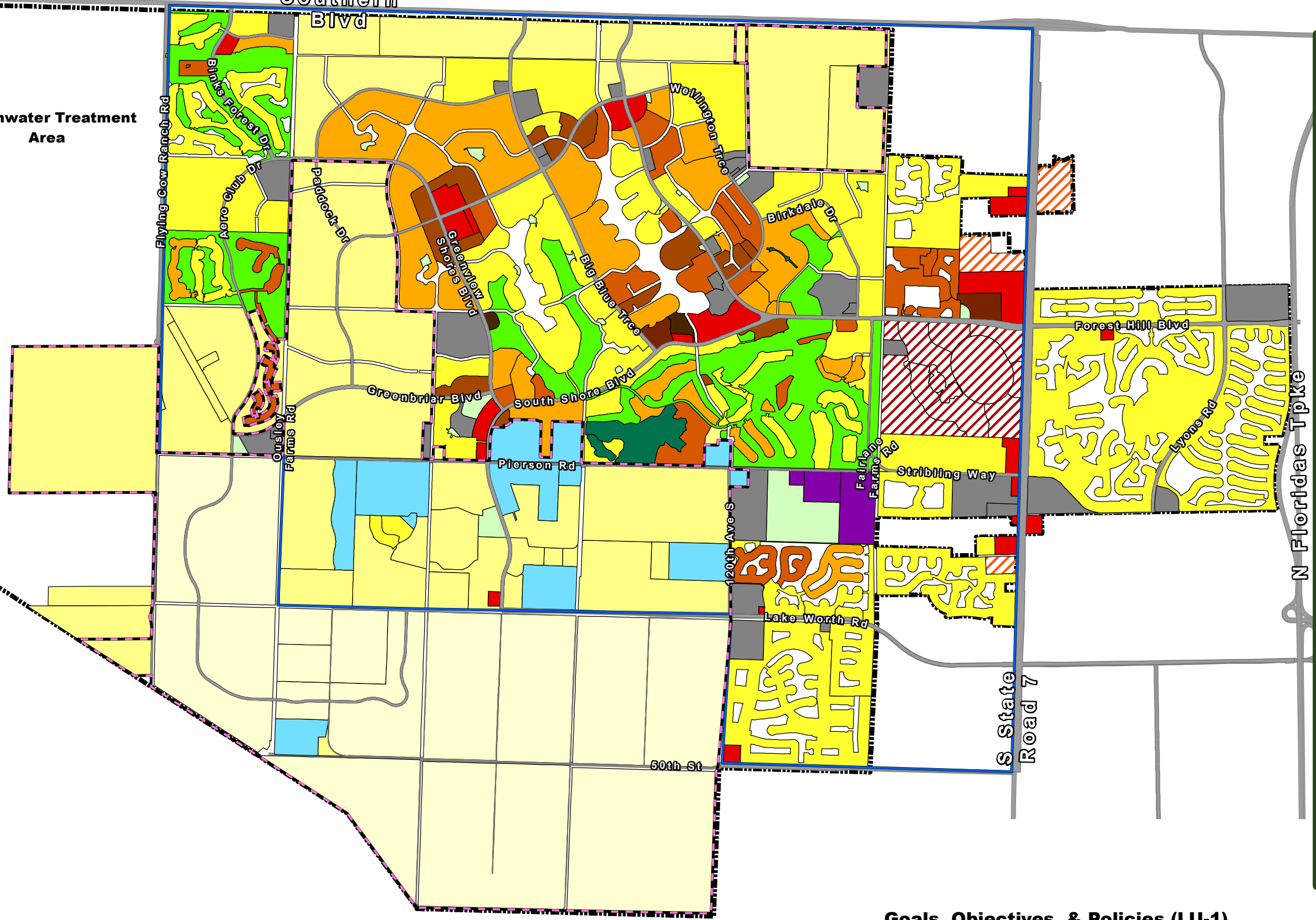
**Parks & Preserves**

- Park
- Conservation

0 0.5 1 Miles



Stormwater Treatment Area



**Goals, Objectives, & Policies (LU-1)**