



Wellington: A Great Hometown!



Palm Beach County Sheriff's Office Village of Wellington

Law Enforcement Services Plan for FY 2024

Table of Contents

Page 2.....	Table of Contents
Page 3.....	Introduction
Page 3.....	Accomplishments
Page 4.....	Juvenile Crime
Page 5.....	Property Crime
Page 6.....	Crashes
Page 7.....	Conclusion
Page 8.....	FY 2024 Action Plans (Plan I and II)
Page 9.....	FY 2024 Action Plans (Plan III)
Page 10.....	D8 Staffing Allocation
Page 11.....	Allocation Chart

PBSO District 8 Wellington FY 2024: Law Enforcement Services Plan

Introduction

The Palm Beach County Sheriff's Office (PBSO) provides law enforcement services to the Village of Wellington (The Village) and functions as its *police department*. PBSO has provided law enforcement services to The Village since incorporation in 1996, and throughout the years, has made modifications to the Law Enforcement Services Agreement (LESA) based upon the needs of The Village.

The Village and the PBSO LESA contract was auto-renewed for FY (Fiscal Year) 2020 and are in the fifth year of the current five-year contract. Typically, both renew LESA every five years¹. A key element of the current agreement is the requirement for the PBSO to submit an annual Law Enforcement Services Plan (LESP) wherein law enforcement accomplishments, challenges, and future goals are presented. This report is the LESP for FY 2024.

Accomplishments

Annually, law enforcement needs are recognized, addressed and directed as a result of regular meetings between the District Commander and Village Manager. In addition, ongoing reporting and interactions with the Village Council have resulted in the exchange of ideas that have yielded successful results. These meetings and presentations will continue as an integral part of our LESP in 2024.

As in years past, 2023 has continued to demonstrate that the Village enjoys a low crime rate, a high clearance rate, a low traffic crash rate, as well as infrequent incidents of violent crime. Consequently, as with past LESP's, the reduction of property crimes and traffic crash mitigation, will be 2024's primary focus. The use of statistical data to identify crime trends and crash patterns, along with investigative methods should assist in keeping the low rate in both categories. A continuous review of the data will allow enforcement to be deployed in the areas with the highest demand of resources. Should ancillary resources or equipment outside of the district be necessary, specialty units shall be deployed to assist and support the District 8 Deputies.

PBSO District 8 Wellington FY 2024: Law Enforcement Services Plan

Juvenile Crime

The Village, as in previous years, continues to enjoy low, but persistent, juvenile crime issues, property crimes, and traffic related problems. Juveniles continue to be responsible for a portion of the property crimes in the Village (see graph below). Another persistent challenge is the fact that residents leave their cars unsecured, which contributes to the higher incidents of vehicle thefts and burglaries.

Village of Wellington Calendar Year (CY) Arrest Data							
Calendar Year (CY)	Pop.	Total		Adult		Juvenile	
		Arrests	% of Pop.	Arrests	% of Total Arrests	Arrests	% of Total Arrests
CY 2018	62,304	545	0.9%	455	83%	90	17%
CY 2019	62,373	480	0.8%	427	89%	53	11%
CY 2020	62,650	342	0.5%	308	90%	34	10%
CY 2021	61,768	396	0.6%	352	89%	44	11%
CY 2022	61,807	476	0.8%	405	85%	71	15%

* Source: FDLE UCR Arrest Data - Total Arrest by Jurisdiction

To address all juvenile related crime issues, District 8 will continue to utilize the Juvenile Arrest and Monitoring (JAM) deputy to 1) educate the District's deputies in keeping them informed about juveniles on probation, and 2) to ensure those juveniles are frequently monitored. Any juveniles found violating their probation are arrested and returned to the Juvenile Assessment Center (JAC). Additionally, we will work with the State Attorney's Office to address particularly troublesome juvenile cases.

The Mall at Wellington Green (The Mall) continues to attract juveniles from surrounding communities, not just to shop, but also to meet, gather and "hang out." As in past years, entertainment and eatery expansion attracted crowds of juveniles and related traffic congestion. Expansion related problems were handled by increased patrolling, traffic enforcement, and partnering with the Mall's management and security staff.

In addition to our enforcement strategies, the District's Community Policing Unit will proactively look to identify families that have juvenile-related problems and work with the Village to support these families with programs.

PBSO District 8 Wellington FY 2024: Law Enforcement Services Plan

Property Crime

Property crimes consist of all burglaries (business, construction site, residential, vehicle) and incidents of graffiti and vandalism. Traditionally, as population increases, so do property crimes. However, a review of FY 2018 through FY 2022 shows that the Property Crime Rate (PCR) has been holding steady with only a 2% increase in FY 2022 as compared to FY 2021. The District continues to focus heavily on the Village's PCR, as it is the principal crime occurring in the Village. Comparing FY 2021 to FY 2022, business and residential burglaries were the only property crimes that saw increases (see graph below).

Vehicle burglaries remain a challenge to the Village (and surrounding jurisdictions), even though there was a 2% decrease in reported cases during FY 2022 as compared to FY 2021. Construction burglaries decreased 50% (from 2 to 1), business burglaries increased 25% (from 8 to 10), and residential burglaries increased 32% (from 25 to 33).

The District continues to monitor vehicle burglaries and in its FY 2024 plan, will dedicate crime prevention resources to educate the public on how to mitigate the risk of being victimized and combat the problem with overt and strategic covert operations including the License Plate Reader (LPR) system.

Village of Wellington Fiscal Year (FY) Property Crime Rates * (Burglary, Vandalism, and Graffiti Incidents)										
	Burglaries				Other Property Crime				Property Crime Rate	
Year	Business	Construction	Residential	Vehicle	Vandalism	Graffiti	Total Property Crime	Annual Population	Per 100 Residents	Increase / Decrease
FY 2018	3	4	42	320	100	6	475	62,304	0.762	-19%*
FY 2019	12	2	44	257	84	3	402	62,373	0.645	-15%
FY 2020	11	0	52	216	48	3	330	62,650	0.527	-18%
FY 2021	8	2	25	99	82	2	218	61,768	0.353	-34%
FY 2022	10	1	33	97	81	1	223	61,807	0.361	2%
(5) Year Total	44	9	196	989	395	15	1,648			
(5) Year Avg.	9	2	39	198	79	3	329.6	62,180	0.530	-17%

*** Source: PBSO P1 (Property Crime Cases). Statistics are dynamic and may be subject to change.
FY2018 percentage decrease based on a PCR of .952 for FY2017.**

PBSO District 8 Wellington FY 2024: Law Enforcement Services Plan

Crashes

A review of crash cases during a 60-month period - FY 2018 versus FY 2022 - reveals that crashes in the Village still remain 7% below FY 2018 (from 1,320 versus 1,224 cases). During this 60-month period, the Village's Crash Rate (CR) averaged 2.0023 crashes per 100 residents. During FY 2022, total crashes increased 7% compared to FY 2021, increasing the CR to 1.9804 from 1.8537 (see graph below).

The District is committed to traffic safety and pro-active traffic enforcement. During FY 2024, the District will continue to deploy traffic enforcement staff to high priority areas to help minimize traffic related crashes.

Village of Wellington Fiscal Year (FY) Case Number Crash Statistics *				
Year	Annual Population	Total Crashes	Monthly Average	Crash Rate Per 100 Residents
FY 2018	62,304	1,320	110	2.1186
FY 2019	62,373	1,348	112	2.1612
FY 2020	62,650	1,189	99	1.8978
FY 2021	61,768	1,145	95	1.8537
FY 2022	61,807	1,224	102	1.9804
(5) Year Total	N/A	6,226	N/A	N/A
(5) Year Average	62,180	1,245	104	2.0023

* Source: PBSO P1 (Crash Statistics include all vehicle crashes and hit and run incidents with case numbers. Excludes S/5V's)

Over time, traffic activity damages roadway infrastructure. To prolong the useful life of the roadway system, the Village restricts Commercial Motor Vehicle (CMV) traffic through its borders. Vehicles with more than six wheels are prohibited by Section 54 of the Village's Code of Ordinances with certain exceptions. However, the use of Village roads as a "cut through" for CMV operators is strictly prohibited, with dump trucks the most frequent offenders.

PBSO District 8 Wellington FY 2024: Law Enforcement Services Plan

Additional challenges are presented by illegal waste disposal on local roads and fields. During FY 2022, the District's CMV deputies stopped 1,502 trucks and placed 239 vehicles and 66 drivers out of service (see graph below). During FY 2024, the CMV deputies will be utilized for targeted traffic interventions as well as manage expected growth in commercial traffic.

CMV		D/S Cordero and D/S Zeitz												Date:		FISCAL Year 2022 (Oct 1, 2021-Sept 30, 2022)											
Date / Hours		Contacts / Citations / Warnings									Arrests		Sp Detail		Reports				Assists		Vehicles Type			Out-of-Svc			
Date	Hours Worked	Total contacts	Citations - Criminal	Citations - DOT	Citations - State	Warnings- Verbal	Warnings - Written	Stopped	Inspected	Post Crash Inspection	Arrests-Misdemeanor	Arrests - Felony	Special Detail Hours	Training Hours	Offense Reports	Zulu Reports	Crash Reports	Assist to Road Patrol	10-61's	Back Ups	Weight Case	Other	HazMat	Manure	Driver	Vehicle	
Totals	2951	1776	67	121	299	664	2499	1502	667	0	1	1	418	220	3	6	12	24	170	400	20	556	0	58	66	239	

*** Source: District-8 - Monthly CMV Unit Statistics**

Conclusion

Juvenile crime, vehicle burglaries, and traffic crashes will continue to be our priorities. The Street Team, Community Policing, and Traffic units will remain an active component of our LESP. The following action plans are proposed for FY 2024: Juvenile Crime issues, Vehicle Burglaries, and Traffic Safety.

Additionally, the District will continue to work with Wellington Community Services to improve conditions in focus areas. Initiatives such as neighborhood cleanups, landlord/tenant communication, neighborhood meetings, walk and talks, and code compliance operations will remain a key part of our strategy.

The Village remains one of the safest municipalities in Palm Beach County and enjoys a low cost for its law enforcement services. Looking ahead to FY 2024 and beyond, the District will continue to provide excellent law enforcement services striving to reduce property crime, increase traffic safety, reduce juvenile issues, and address equestrian concerns. The District looks forward to working with the Village to keep Wellington a "Great Hometown."

PBSO District 8 Wellington FY 2024: Law Enforcement Services Plan

Action Plans, Goals & Objectives

Plan I- Juvenile Crime

Discussion:

Juvenile crime issues (property crimes) are an ongoing problem and account for at least 15% of all crime arrests in the Village (source: FDLE 2022 Total Arrest by Jurisdiction). A percentage of these juveniles are not Wellington residents. Effective supervision of, and intervention with, juvenile offenders provides opportunities to reduce property crimes, to reduce juvenile related robberies and to direct juveniles towards non-criminal lifestyles.

Goal:

- Reduce crime through effective supervision of juvenile offenders.
- Use current Village of Wellington programs to redirect the juveniles.

Inputs:

- The District will continue to use the JAM monitoring and enforcement Deputy.
- Aggressively enforce juveniles on probation and visit each at least monthly.
- The JAM Deputy to assist and train Road Patrol Deputies on juvenile probation and enforcement.

Anticipated Outcome/Outputs:

- Reduce juvenile probation re-entry by 5% in FY 2024.
- Reduce juvenile related crimes.

Plan II- Property Crime

Discussion:

The District remains focused on the crime rate and will target vehicle burglaries, robberies, and thefts. The information below will be instrumental in curtailing crime in the Village.

Goal:

- Maintain a low crime rate.
- Educate the citizens in protecting their property.

PBSO District 8 Wellington FY 2024: Law Enforcement Services Plan

Inputs:

- Combined effort of Road Patrol, Street Team, Community Policing, and Detectives.
- Use GPS technology.
- Use covert surveillance techniques and equipment.
- Utilize the LPR system.
- Utilize crime mapping and trends to focus efforts on neighborhoods, businesses, etc. where crimes have occurred or complaints have been received.
- Utilize Walk and Talk, Public Service Announcements (PSA) and CEPTD Surveys (Crime Prevention Through Environmental Design) of businesses and shopping centers to aid crime prevention and continue to get the word out "not to be an easy victim."

Anticipated Outcome / Outputs:

- During FY 2024, maintain the robberies to 12 or less in the Village.
- During FY 2024, property crimes to remain less than 800 cases.
- During FY 2024, 10% of burglaries to be cleared by arrest.

Plan III- Crashes

Discussion:

Speeding and crashes are consistently the most common complaint. The District is committed to traffic safety and pro-active traffic enforcement. During FY 2024, traffic enforcement staff will be deployed in targeted locations that were identified as hazards.

Goal:

- To reduce traffic crashes and minimize traffic fatalities.
- Reduce CMV complaints and illegal dumping.
- Target enforcement of seatbelts and texting while driving.

Inputs:

- Ensure District Motor and Traffic units receive all required training.
- Ensure Motor and Traffic units have all necessary equipment.
- Deploy Motor and Traffic units pursuant to traffic crash patterns and citizen initiated traffic complaints.
- Pay special attention to CMV related challenges.

Anticipated Outcome/Outputs:

- At least 10,000 traffic stops in FY 2024.
- Maintain the Village's Crash Rate at 3.00 or below.

PBSO District 8 Wellington FY 2024: Law Enforcement Services Plan

District 8 Staffing Allocation: FY 2023 versus FY 2024ⁱⁱ

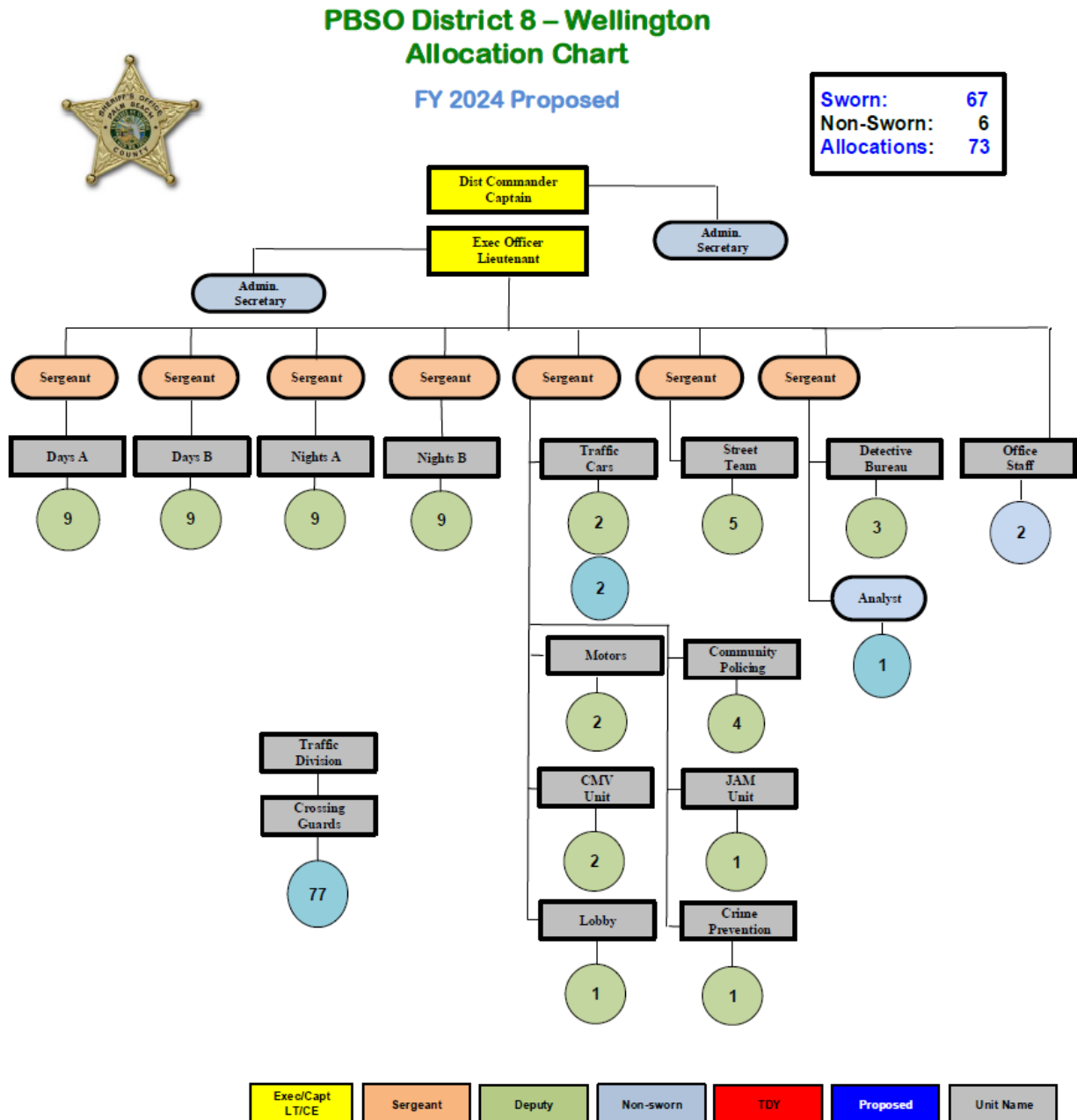
District 8 Staffing Allocation				
Position	Current FY 2023		Proposed FY 2024	
	Allocation Funded by Contract	Allocation Provided by PBSO	Allocation Funded by Contract	Allocation Provided by PBSO
Captain	1		1	
Lieutenant	1		1	
Sergeants	7		7	
Road Patrol Deputy Sheriff	46		46	
Detective Bureau Detective Detective (TDY from PBSO)	3	1	3	1
Street Team Agent	5		5	
CMV Aggressive Driving Deputy Sheriff	2		2	
Motors Deputy Sheriff	2		2	
Community Service Aide	2		2	
Administrative Secretaries	2		2	
Law Enforcement Aide	0		0	
Clerical Specialist	1		1	
Criminal Intelligence Analyst	1		1	
Total Paid by Wellington	73		73	
Total Provided by PBSO		1		1
Total Staff	73	1	73	1

ⁱThe current five-year agreement runs from October 1, 2020 through September 30, 2025. FY 2024 is the 5th Addendum (or fifth year of the five-year agreement).

ⁱⁱ Annually, the Village provides funding for 77 School Crossing Guards.

PBSO District 8 Wellington FY 2024: Law Enforcement Services Plan

District 8 Staffing Allocation: FY 2023 versus FY 2024ⁱⁱⁱ



ⁱⁱⁱ Annually, the Village provides funding for 77 School Crossing Guards.