

# C-8 Canal Multi-Use Pathway Project

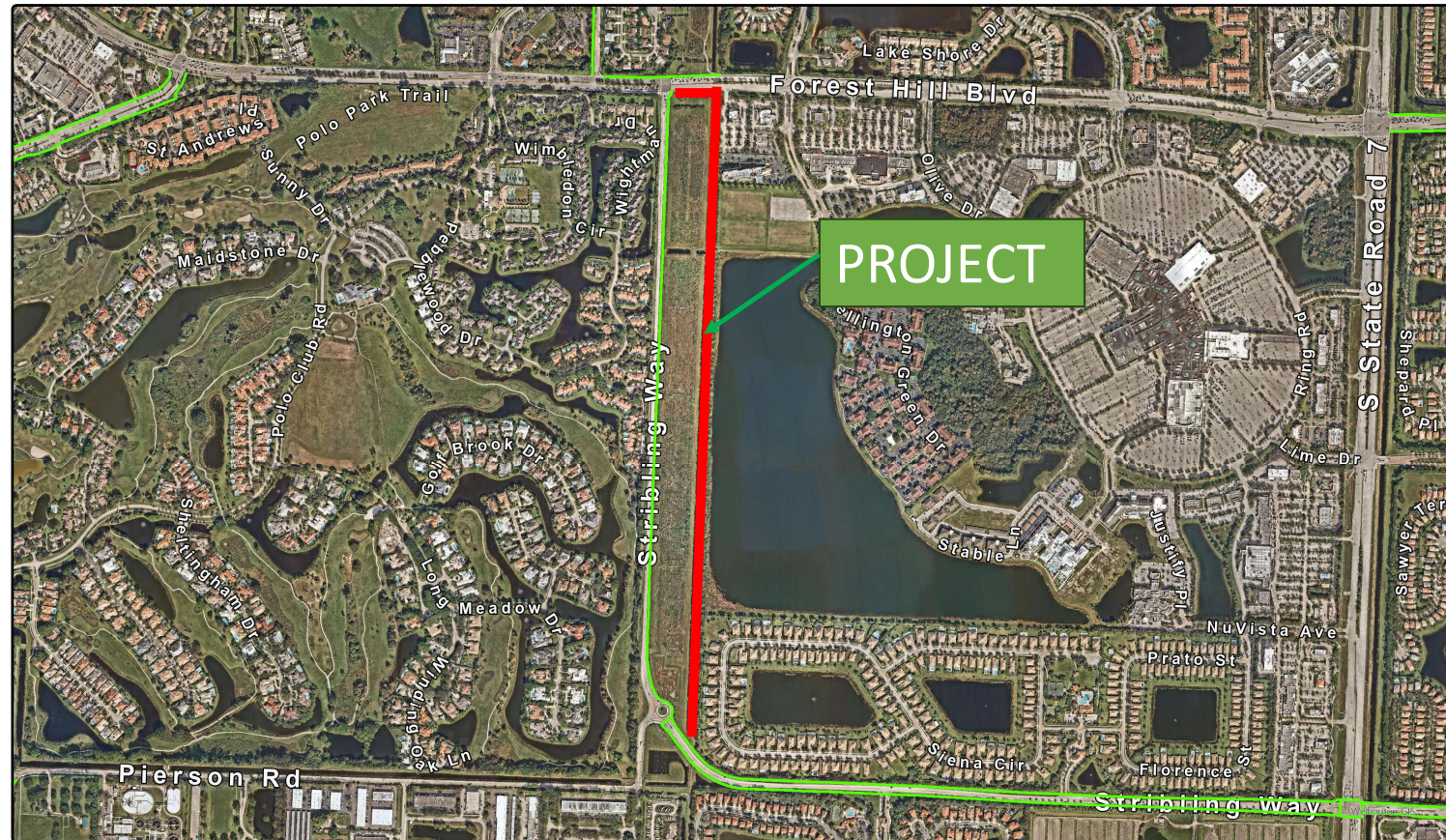


## Project Details

- Construction Cost: \$451,249.40
- CEI Cost: \$30,430.00
- Total Project Cost: \$481,679.40

LAP Contribution: \$355,607.00

Total Cost to Village: \$95,642.40



12300 Forest Hill Blvd • Wellington, FL 33414 • 561.791.4000 • www.wellingtonfl.gov

	<b>Village of Wellington</b> Palm Beach County, FL	Wellington	Multi Modal Pathways	Pedestrian Only
			Golf Cart Allowed	





# Wellington Comprehensive Plan 2021 Mobility Element Multi-Modal Pathways

