

Exhibit C

FDOT Amendment No. 1 to Landscape Maintenance
Memorandum of Agreement

SECTION No.: 93210000
PERMIT No.: 2022-L-496-00008
COUNTY: PALM BEACH
S.R. No.: SR 7

**AMENDMENT NUMBER ONE (1) TO STATE OF FLORIDA DISTRICT FOUR (4)
DEPARTMENT OF TRANSPORTATION
LANDSCAPE MAINTENANCE MEMORANDUM OF AGREEMENT**

THIS AMENDMENT Number One (1) to the Agreement dated March 22, 2007, made and entered into this _____ day of _____ 20____ by and between the **STATE OF FLORIDA DEPARTMENT OF TRANSPORTATION** hereinafter called the **DEPARTMENT** and the **VILLAGE OF WELLINGTON**, a municipal subdivision of the State of Florida, hereinafter called the **AGENCY**.

W I T N E S S E T H

WHEREAS, the parties entered into Landscape Maintenance Memorandums of Agreement dated, March 22, 2007 and September 9, 2008 for the purposes of the **AGENCY** maintaining landscape and hardscape improvements on State Road 7 (US 441); and,

WHEREAS, the **DEPARTMENT** and the **AGENCY** have agreed to add additional landscape to be installed on State Road 7 (US 441) in accordance with the above referenced Agreement; and,

WHEREAS, the parties hereto mutually recognize the need for entering into an Amendment designating and setting forth the responsibilities of each party, and

NOW THEREFORE, for and in consideration of mutual benefits that flow each to the other, the parties covenant and agree as follows:

1. Pursuant to page 5, paragraph 11 of the Landscape Maintenance Memorandum of Agreement for State Road 7 (US 441) dated March 22, 2007, the DEPARTMENT will allow the AGENCY to have constructed additional landscape improvements, or to modify an existing improvement, located as indicated in **Exhibit "A"**, State Road 7 (US 441) between Forest Hill Blvd. (M.P. 22.307) to Medical Park Blvd. (M.P. 22.463), in accordance with the plans attached as **Exhibit "B"**.
2. The AGENCY shall agree to maintain the additional landscape improvements in the Agreement described above according to **Exhibit "C"** Maintenance Plan, attached to this Amendment.

Except as modified by this Amendment, all terms and conditions of the original Agreements and all Amendments thereto shall remain in full force and effect.

LIST OF EXHIBITS

- Exhibit A - Landscape Improvements Maintenance Boundary Limits
- Exhibit B - Landscape Improvement Plans
- Exhibit C –Maintenance Plan for Landscape Improvements

In Witness whereof, the parties hereto have executed with this Amendment effective the day and year written above.

AGENCY

By: _____
Chairperson/Mayor/Manager

Attest: _____(SEAL)
Clerk

Legal Approval	Date
_____	_____

**STATE OF FLORIDA
DEPARTMENT OF TRANSPORTATION**

By: _____
Steven C. Braun, Trans. Development Dir.

Attest: _____(SEAL)
Executive Secretary

Legal Review	Date
_____	_____
Office of the General Counsel	

SECTION No.: 93210000
PERMIT No.: 2022-L-496-00008
COUNTY: PALM BEACH
S.R. No.: SR 7

EXHIBIT A

LANDSCAPE IMPROVEMENTS MAINTENANCE BOUNDARY LIMITS*

I. ORIGINAL LANDSCAPE MAINTENANCE AGREEMENT LIMITS:

State Road 7 Medians from Lake Worth Road (M.P. 20.50) to Wellington's Boundary (M.P. 23.266)

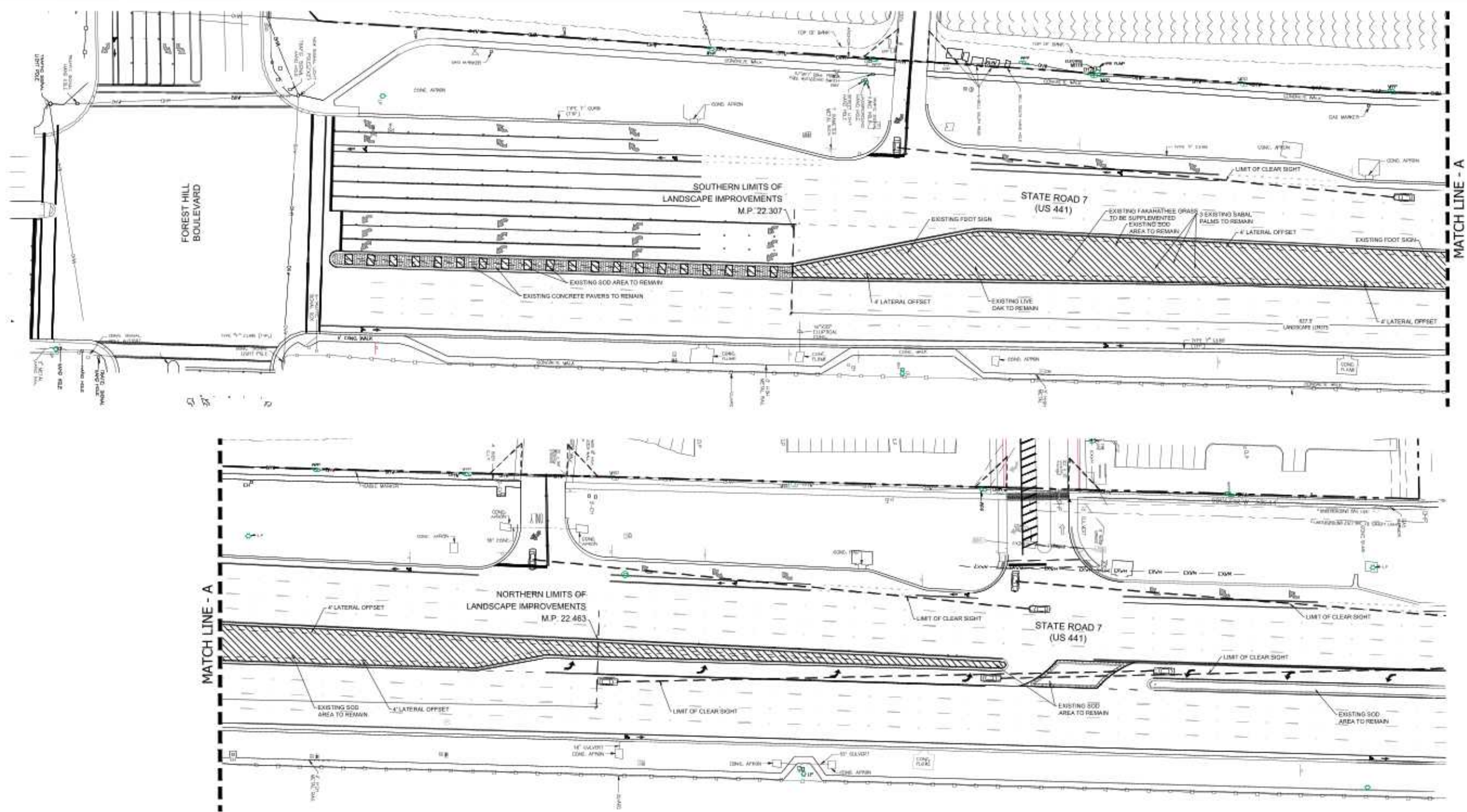
II. PERMIT PROJECT MAINTENANCE LIMITS:

State Road 7 Median between Forest Hill Blvd. (M.P. 22.307) to Medical Park Blvd. (M.P. 22.463)


III. LANDSCAPE IMPROVEMENTS MAINTENANCE BOUNDARY MAP:

Please See Attached

**All limits of the original agreements and amendments shall still apply*

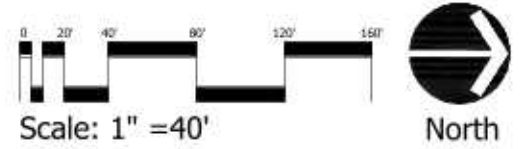


LEGEND

 LIMITS OF MAINTENANCE BY VILLAGE OF WELLINGTON

48 HOURS BEFORE DIGGING
CALL TOLL FREE
811
SUNSHINE STATE ONE CALL
OF FLORIDA, INC.

Exhibit A



Cotleur & Hearing
Landscape Architects
Land Planners
Environmental Consultants
1934 Commerce Lane
Suite 1
Jupiter, Florida 33458
561.747.6338 • Fax 747.1377
www.cotleurhearing.com
Lic# LC-26000535

Wellington Regional Medical Center STATE ROAD 7 (US 441) LANDSCAPE WELLINGTON, FLORIDA

DESIGNED	DEH
DRAWN	AGE
APPROVED	DEH
JOB NUMBER	19-0603
DATE	06-16-22
REVISIONS	

SECTION No.: 93210000
PERMIT No.: 2022-L-496-00008
COUNTY: PALM BEACH
S.R. No.: SR 7

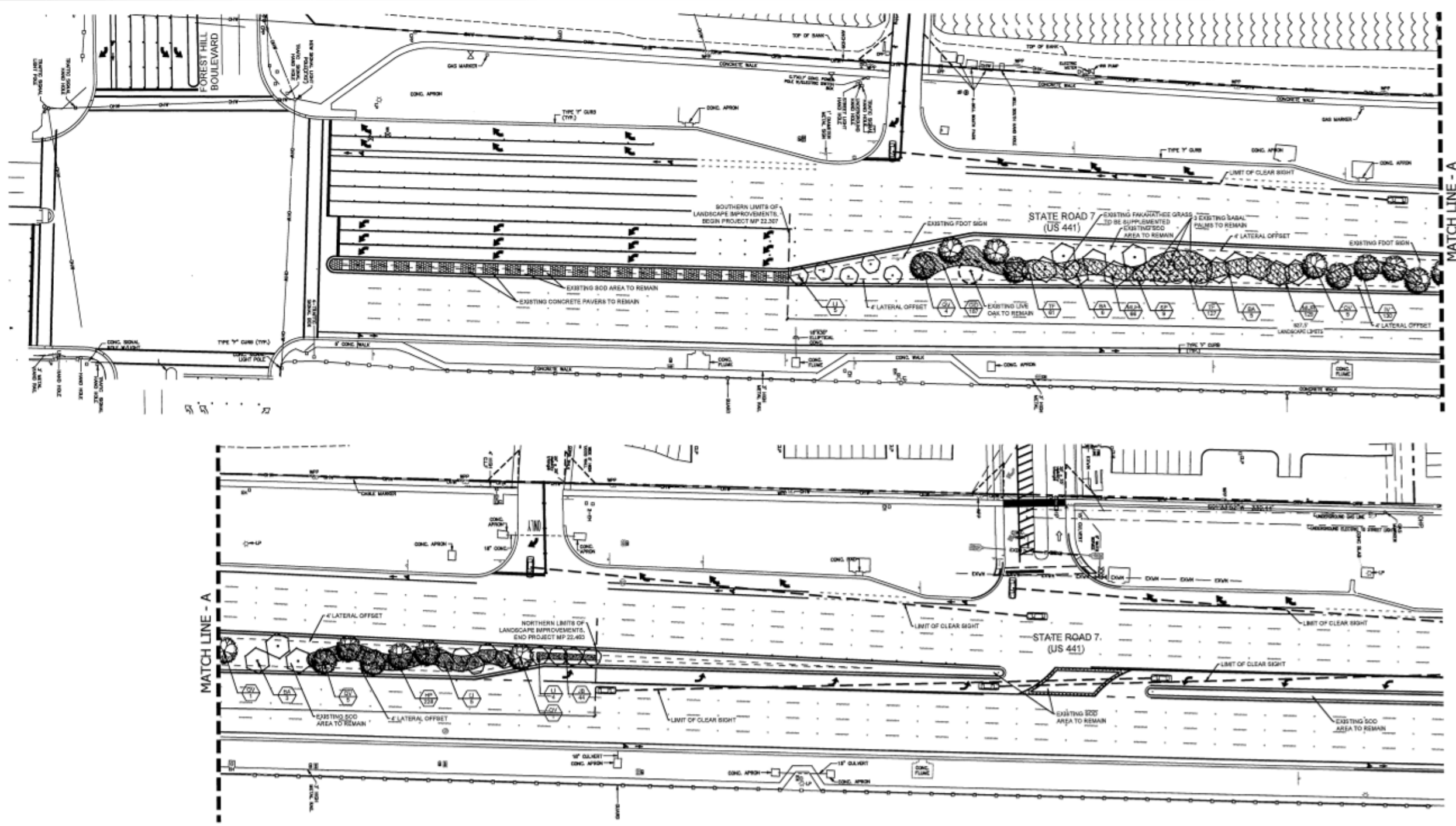
EXHIBIT B

LANDSCAPE IMPROVEMENT PLANS

The AGENCY agrees to install the landscape improvements in accordance with the plans and specifications attached hereto and incorporated herein.

Please see attached plans prepared by: Cotleur & Hearing, LLC
Donaldson Hearing, RLA

Date: 09/22/2022



LANDSCAPE DATA

MEDIAN LANDSCAPE REQUIREMENTS (TYPE C BUFFER CRITERIA)	REQUIRED	PROVIDED
SHADE TREES (1 TREE PER 40 LINEAR FEET) 827.5 LINEAR FEET	21	17
PALMS (3 PALMS = 1 SHADE TREE) 827.5 LINEAR FEET	63	48
FLOWERING OR SMALL TREE (1 TREE PER 30 LINEAR FEET) 827.5 LINEAR FEET	28	28
HEDGE (1 SHRUB PER 3 LINEAR FEET) 827.5 LINEAR FEET	276	345
SHRUBS (1 SHRUB PER 3 LINEAR FEET) 827.5 LINEAR FEET	276	427

FDOT GENERAL NOTES

- GOVERNING STANDARD PLANS: Florida Department of Transportation, FY 2022-23 Standard Plans for Road and Bridge Construction and applicable Standard Sections (SS) are available at the following website: <https://www.fltdot.com/standard-plans/>
- GOVERNING STANDARD SPECIFICATIONS: Florida Department of Transportation, July 2022 Standard Specifications for Road and Bridge Construction at the following website: <https://www.fltdot.com/specifications/>
- CONTRACTOR SHALL REPAIR ALL DAMAGE DONE TO FOOT PROPERTY DURING DEMOLITION, RELOCATION AND INSTALLATION ACTIVITIES AT HIS SOLE EXPENSE.
- ANY PLANT MATERIAL SUBSTITUTION WITHIN OR IMPACTING THE FOOT RIGHT OF WAY, WHETHER REQUESTED BY THE CONTRACTOR, OWNER, LANDSCAPE ARCHITECT OR OTHER WILL NEED TO BE APPROVED FROM THE FOOT DISTRICT LANDSCAPE ARCHITECT.
- OWNERSHIP OF ALL SUSTAINABLE EXCAVATED MATERIALS, AS DETERMINED BY THE DEPARTMENT, SHALL REMAIN IN THE DEPARTMENT UNLESS A PERMIT ACCEPTANCE OF THE PERMITTED PROJECT IS OBTAINED. EXCAVATED MATERIALS SHALL BE Hauled BY THE PERMITTEE AT THEIR COST A MINIMUM OF 100 YARDS FROM THE FOOT PLANTING AREA. EXCAVATED MATERIALS OR STOCKPILES IN THOSE AREAS AS DIRECTED BY THE DEPARTMENT, INCLUDING ASPHALT MILLINGS.

FDOT PLANTING NOTES

- FOR THE PORTION OF LANDSCAPE PLANT MATERIAL THAT WILL BE INSTALLED WITHIN THE FOOT RIGHT OF WAY, LANDSCAPE INSTALLATION SHALL COMPLY WITH CURRENT APPLICABLE FOOT MANDATORY SPECIFICATION SS-1. ONLINE REFERENCE: <https://www.fltdot.com/specifications/standard-sections/SS-1-Planting-Installation/>
- FOR THE PORTION OF LANDSCAPE PLANT MATERIAL THAT WILL BE INSTALLED WITHIN THE FOOT RIGHT OF WAY, LANDSCAPE INSTALLATION SHALL COMPLY WITH CURRENT APPLICABLE FOOT MANDATORY SPECIFICATION SS-1. ONLINE REFERENCE: <https://www.fltdot.com/specifications/standard-sections/SS-1-Planting-Installation/>
- IF IT IS RECOMMENDED TO VERIFY THE EXISTING SOIL CONDITIONS FOR THE MEDIUM TO BE PLANTED PRIOR TO FINALISING THE CONSTRUCTION DOCUMENTS, IF THE EXISTING SUBGRADE IS COMPACTED ROAD BASE, IT IS RECOMMENDED TO VERIFY REPLACING WITH PLANTING SOIL, AS FOLLOWS: (SEE SOIL REPLACEMENT DETAIL ON SHEET 2)
 - CONTRACTOR SHALL PREPARE A CONTIGUOUS BAND OF UNDISTURBED COMPACTED SUBGRADE UP FROM THE BACK OF CURB (SEE DETAIL BELOW)
 - CONTRACTOR SHALL PLACE A 4" MINIMUM THICKNESS OF UNDISTURBED CONCRETE PAVEMENT ROAD BASE, STONE OR OTHER PERMISSIBLE MATERIALS, TO REMOVED FROM MEDIUM AREA TO BE PLANTED AND REPLACED WITH SPECIFIED PLANTING SOIL, E.G., SOIL SAND AND 40% SILT.
 - GRAVEL TO BE PLANTED WITH BUREAU AND/OR OTHER COVERING REMOVE COMPACTED SOIL TO A DEPTH OF 1" AND REPLACE WITH SPECIFIED PLANTING SOIL. PLANTING SOIL SHALL COME UP TO 4" FROM TOP OF CURB, RESERVING SPACE FOR 3" COMPACTED MULCH AND 1" CLEAR FROM TOP OF CURB.
 - PLANTING SITE FOR TREES AND PALMS REMOVE COMPACTED SOIL WITHIN THE AREA OF EACH PLANTING PIT TO A DEPTH OF 18" FROM THE TOP OF CURB PLANTING SOIL SHALL COME UP TO 4" FROM TOP OF CURB, RESERVING SPACE FOR 3" COMPACTED MULCH AND 1" CLEAR FROM TOP OF CURB.
- OVERSEED MULCH IS NOT PERMITTED ON FOOT RIGHT OF WAY. MULCH PERMITTED TO BE USED ARE: AMERICAN MULCH (ECONOMY) NO OTHER PRODUCE; BIOLOGICAL MULCH OR APPROVED EQUAL, CERTIFIED BY THE MULCH AND SOIL COUNCIL (MSC) SEVENTH FLOOR OF 1000 N. W. 10TH AVENUE, MIAMI, FL 33136. LANDSCAPE ARCHITECT SHALL VERIFY MULCH INSPECTION.
- SUCCESS AREAS WILL BE IN ACCORDANCE WITH STANDARD PLANS BOD-10010 AND STANDARD SPECIFICATION SECTION 202.115. ALL MULCH SHALL BE OF THE SAME SPECIFICATION AS GOVERNING DESIGN STANDARDS AND STANDARD SPECIFICATIONS. ALL DISTURBED AREAS WILL BE RESEED WITHIN ONE (1) WEEK OF INSTALLATION OF EACH PERMITTED WORK.

FDOT IRRIGATION NOTES

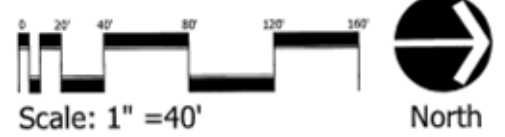
- AN EXISTING IRRIGATION SYSTEM CURRENTLY COVERS THE MEDIAN AND THE EXISTING LANDSCAPE. THE SYSTEM IS TO BE TESTED AND RESTORED TO FULL FUNCTIONALITY. THE IRRIGATION IN THE MEDIAN CAN BE RESTORED COMPLETELY OR THE CONTRACTOR CAN DESIGN AND INSTALL AND REPLACE WHAT IS NEEDED AS LONG AS THERE IS 100% COVERAGE AND NO OVERWATERING.
- THE MEDIAN SHALL BE IRRIGATED FOR A MINIMUM OF 120 DAYS FOR THE ESTABLISHMENT OF THE NEW LANDSCAPE.

48 HOURS BEFORE DIGGING
CALL TOLL FREE
811
SUNSHINE STATE ONE CALL
OF FLORIDA, INC.

Design Speed = 45 MPH

Landscape Plan

FDOT Landscape Permit Number 2022-L-496-00008



Cotleur & Hearing
Landscape Architects
Land Planners
Environmental Consultants
1934 Commerce Lane
Suite 1
Jupiter, Florida 33458
561.747.6336 - Fax 747.1377
www.cotleurhearing.com
Lic# LC-26000535

Wellington Regional Medical Center
STATE ROAD 7 (US 441) LANDSCAPE
WELLINGTON, FLORIDA

DESIGNED	DEH
DRAWN	AOB
APPROVED	DEH
JOB NUMBER	19-0501
DATE	04-01-21
REVISIONS	06-16-21
	08-02-22

August 16, 2021 9:35:35 a.m.
Drawing: 19-0501 LP.DWG

SECTION No.: 93210000
PERMIT No.: 2022-L-496-00008
COUNTY: PALM BEACH
S.R. No.: SR 7

EXHIBIT C

MAINTENANCE PLAN FOR LANDSCAPE IMPROVEMENTS

This Exhibit forms an integral part of the DISTRICT FOUR (4) LANDSCAPE MAINTENANCE MEMORANDUM OF AGREEMENT between the State of Florida, Department of Transportation and the AGENCY.

Please see attached

MAINTENANCE PLAN

Landscape Improvements

Project State Road No(s): State Road 7 from Forest Hill Blvd to Medical Park Blvd
Permit or FM No(s): 2022-L-496-00008
RLA of Record: Donaldson E. Hearing, RLA
Maintaining Agency: Village of Wellington
Date: June 16, 2022

The purpose of a plan for the Landscape Improvements maintenance practices is to allow the plant material on the project to thrive in a safe and vigorous manner while fulfilling their intended purpose and conserving natural resources. Plantings and all other landscape improvements within FDOT right of way shall be maintained to avoid potential roadway hazards; and to provide clear visibility, accessibility, clearance, and setbacks as set forth and required by the Florida Department of Transportation (FDOT) in the following governing standards and specifications: FDOT Standard Plans, FDOT Plans Design Manual and FDOT Standard Specifications for Road and Bridge Construction, as amended by contract documents, and all other requirements set forth by the District 4 Operations Maintenance Engineer.

Part I of the Maintenance Plan describes general maintenance requirements and recommendations that are standard for all projects. Part II provides recommendations prepared by the Registered Landscape Architect of Record specific to the attached approved plans.

PART I. GENERAL MAINTENANCE REQUIREMENTS AND RECOMMENDATIONS:

WATERING REQUIREMENTS

Watering is a critical concern for not only the maintenance of healthy plant material but also for observing water conservation practices. The amount of water to apply at any one time varies with the weather, drainage conditions and water holding capacity of the soil. For plant materials that have been established, it is imperative that any mandated water restrictions be fully conformed to on FDOT roadways.

Proper watering techniques should provide even and thorough water dispersal to wet the entire root zone, but not saturate the soil or over-spray onto travel lanes.

IRRIGATION SYSTEM

The Agency shall ensure there are no roadway overspray or irrigation activities during daytime hours (most notably "rush hour" traffic periods). It is imperative the irrigation controller is properly set to run early enough that the watering process will be entirely completed before high traffic periods, while adhering to mandated water restrictions. To ensure water conservation, the Agency shall monitor the system for water leaks and the rain sensors to ensure they are functioning properly so that the system shuts down when there is sufficient rainfall.

INTEGRATED PLANT MANAGEMENT

An assessment of each planting area's soil is recommended to periodically determine the nutrient levels needed to sustain healthy, vigorous plant growth.

Palms, shrubs, trees, and turf areas shall be fertilized in such a manner and frequency to ensure that the plant material remains healthy and vigorously growing. Please be alert to changes in fertilization types per University of Florida, Institute of Food and Agricultural Services (I.F.A.S.) recommendations.

Establishment of an integrated pest management program is encouraged to ensure healthy plants, which are free of disease and pests.

MULCHING

Mulch planting beds to prevent weed growth, retain moisture to the plants, protect against soil erosion and nutrient loss, maintain a more uniform soil temperature, and improve the appearance of the planting beds. Do not mound mulch against the trunks of trees, palms, and the base of shrubs to allow air movement which aids in lowering disease susceptibility. Cypress mulch is prohibited on state right of way.

PRUNING

All pruning, and the associated safety criteria, shall be performed according to American National Standard Institute (ANSI) A300 standards and shall be supervised by an International Society of Arboriculture (ISA) Certified Arborist. Pruning shall be carried out with the health and natural growth of plant materials in mind, to achieve the FDOT requirements for maintaining clear visibility for motorists, and provide vertical clearance for pedestrian, bicyclist, and truck traffic where applicable. Visibility windows must be maintained free of view obstructions, and all trees and palms must be maintained to prevent potential roadway and pedestrian hazards. All palms are to be kept fruit free. The understory plant materials selected for use within the restricted planting areas (Limits of Clear Sight) are to be mature height in compliance with the *FDM Window Detail*. Vertical clear zones for vegetation heights over roadways and sidewalks must meet the requirements of the *FDOT Maintenance Rating Program* (MRP) standards. See Reference pages. The R.L.A. of Record will provide the specific pruning heights for mature or maintained height and spread of all plant material to achieve the design intent shall be noted in Part II., Specific Project Site Maintenance Requirements and Recommendations.

STAKING AND GUYING

All staking materials are to be removed after one year or as directed by the RLA of Record.). Any subsequent staking and guying activities by the Agency must adhere to *FDOT Standard Plans* guidelines (See Index 580-001). The Agency shall closely monitor staking and guying attachment materials so that they are securely fastened to avoid potential roadway hazards.

TURF MOWING

All grassed areas are to be mowed and trimmed with sufficient frequency to maintain a deep, healthy root system while providing a neat and clean appearance to the urban landscape. All turf efforts, mowing, curb/sidewalk edging and turf condition, must at a minimum, meet *FDOT Maintenance Rating Program* (MRP).

LITTER CONTROL

The project site shall remain as litter free as practicable. It is recommended to recycle this litter to avoid unnecessary waste by its reuse. Litter removal efforts must meet *FDOT Maintenance Rating Program* (MRP) standards.

WEEDING/HERBICIDE

All planting areas shall be maintained as weed free as practicable by enlisting integrated pest management practices in areas specified on the plans and maintaining proper mulch levels. Extreme care is recommended when using a chemical herbicide to avoid overspray onto plant materials. It is the applicator's responsibility to restore any damage resulting from overspray to the plantings, per the approved plans.

PLANT REPLACEMENT

Plant replacement shall be the same species and specification as the approved plan. Move and replace all plant materials that may conflict with utility relocations and service. Only plants graded Florida #1 or better, per the *Florida Department of Agriculture and Consumer Services, Grades and Standards for Nursery Plants* are permitted on FDOT roadways. Should it become necessary to change the species, a permit is required from FDOT for approval by the FDOT District Landscape Architect.

HARDSCAPE (SPECIALTY SURFACING)

All tree grates and specialty surfacing (if applicable) shall be maintained in such a manner as to prevent any potential tripping hazards and protect damage to the surfacing and tree grates. Final surface tolerance from grade elevations shall, at a minimum, meet the most current FDOT Maintenance Rating Program Handbook for a sidewalk; ADA accessible sidewalk; and FDOT Design Standards for Design, Construction, Maintenance and Utility Operations on The State Highway System. If the specialty surfacing or tree grates become damaged, they shall be replaced with the same type and specification as the approved plan.

HARDSCAPE (CONCRETE PAVERS)

All concrete pavers (if applicable) shall be maintained in such a manner as to prevent any potential tripping hazards and protect damage to the pavers. Final surface tolerance from grade elevations shall, at a minimum, meet the most current *Interlocking Concrete Pavement Institute (ICPI), Guide Specifications for Pavers on an Aggregate Base, Section 23 14 13 Interlocking Concrete Pavers, Part 3.05*. If the concrete pavers become damaged, they shall be replaced with the same type and specification as the approved plan.

It shall be the responsibility of the AGENCY to maintain all signs located within a non-standard surfacing area. Such maintenance to be provided by the AGENCY shall include repair and replacement of the sign panel, post, and base.

HARDSCAPE (NON-STANDARD) TRAVELWAY SURFACING

It shall be the responsibility of the AGENCY to restore an unacceptable ride condition of the roadway, including asphalt pavement (if applicable), caused, or contributed by the installation or failure of non-standard surfacing, and/or the header curb, on the Department of Transportation right of way within the limits of this Agreement. Pavement restoration areas or "patches" will have a minimum length of 10-ft, measured from the edge of the header curb, and a width to cover full lanes for each lane affected by the restoration.

Pavement restoration will be performed in accordance with the most current edition of the *FDOT Standard Specifications for Road and Bridge Construction*, and the *FDOT Design Standards for Design, Construction, Maintenance and Utility Operations on the State Highway System*.

HARDSCAPE (LANDSCAPE ACCENT LIGHTING) (IF APPLICABLE)

Landscape accent lighting shall be maintained in such a manner as to prolong the life of the lighting fixture and prevent potential safety hazards. If the lighting fixtures and their system become damaged, they shall be replaced with the same type and specification as the approved plan. Landscape lighting shall meet requirements for the sea turtle nesting and hatching.

SITE FURNISHINGS

Site furnishing such as Trash Receptacles, Benches, Bollards and Bicycle Racks shall be maintained in such a manner as to prolong the life of the fixture and prevent potential safety hazards. If the fixtures and their overall function and mounting systems become damaged, they shall be replaced with the same type and specification as the approved plan.

TREE CELL STRUCTURES

Underground tree cells shall be maintained in such a manner as to prolong the life of the structure and prevent potential safety hazards. If the structures fail or become damaged, they shall be replaced with the same type and specification as the approved plan.

MAINTENANCE OF TRAFFIC CONTROL

Reference the FDOT website regarding the selection of the proper traffic control requirements to be provided during routine maintenance and / or new installations of this DOT roadway.

VEGETATION MANAGEMENT AT OUTDOOR ADVERTISING (ODA) (IF APPLICABLE)

To avoid conflicts with permitted outdoor advertising, please reference the State of Florida website regarding the vegetation management of outdoor advertising. This website provides a portal to search the FDOT Outdoor Advertising Inventory Management System Database. The database contains an inventory of outdoor advertising structures, permits and other related information maintained by the Department.

Also, reference the *Florida Highway Beautification Program* website link for *Vegetation Management at ODA signs* Florida Statutes and Florida Administrative Code related to vegetation management at outdoor advertising sign, permit applications for vegetation management and determining mitigation value of roadside vegetation.

PART II. SPECIFIC PROJECT SITE MAINTENANCE REQUIREMENTS AND RECOMMENDATIONS

1. The median includes sod, shrub/ground cover plantings, as well as canopy and flowering trees, and large palms to promote the Village's vision of landscape beautification.
2. Irrigation systems will cover all plantings within the medians.
3. All trees are intended to be maintained at mature height and spread and do not need pruning to control their overall height. The only pruning required will be as described above for safety, sight line visibility, to remove dead or damaged branches, to remove sucker growth or to improve structure.
4. To maintain the intended appearance of all palms, apply the latest fertilizer recommended by the University of Florida IFAS Extension per the manufacturer's specifications ('palm special' fertilizer blend with an 8-2-12 +4 Mg). This may be used for shrubs or turf grasses, however, do not use general purpose fertilizers within 40' of any palm species.
5. To maintain the intended appearance of all shrubs or turf grass, apply the latest fertilizer recommended by the University of Florida IFAS Extension per the manufacturer's specifications and in accordance with Martin County fertilizer restrictions.
6. Do not remove fronds from self-cleaning palms, unless damaged. Palms with persistent fronds shall only have dead fronds removed, do not remove any green fronds. If it is deemed necessary to prune a palm's fronds, no fronds shall be trimmed above 3 o'clock and 9 o'clock on the horizontal plane.
7. Groundcover and shrub horizontal growth shall be maintained to prevent foliage from growing beyond the limits of the planting areas shown on the plan. Maintain a 12" setback from the foliage to the edge of curb, pavement, sidewalk and/or other hardscape improvements as shown in the plans.
8. Control the overall height of all shrubs in accordance with the list provided below. Native grasses and certain shrubs should never be pruned to control their overall height and instead will be allowed to grow to their Natural Form. The grasses can be cut back to within 6" from grade as needed to limit biomass and regenerate them. This is typically required every one to two years at most.
 - *Chrysobalanus icaco* 'Horizontalis'/Dwarf Cocoplum at 2', (full to ground and not stretched)
 - *Hamelia patens*/ Firebush at 3', (full to ground)
 - *Ilex vomitoria* 'Stokes Dwarf'/Dwarf Yaupon Holly between 2', (full to ground)
 - *Juniperus conferta*/Shore Juniper between at 12", (full to ground)
 - *Muhlenbergia capillaris*/Muhly Grass at NF, (about 3' full to ground)
 - *Tripsacum dactyloides*/Fakahatchee Grass at NF, (about 4.5' full to ground)
9. Inspect groundcovers and shrubs on a monthly basis for maintaining full ground coverage.
10. Evaluate plant material on a monthly basis for pests, diseases, drought stress or general decline. If required, follow the integrated pest management program established by the Agency to ensure healthy plants.
11. Inspect the irrigation system performance on a quarterly basis to ensure the system is providing 100% coverage, does not have sections of low pressure, heads and valves are clean and clear of debris and any damaged irrigation components (i.e., spray nozzles, spray heads, valve boxes, etc.) are repaired or replaced.

REFERENCES (4-27-20)

*This reference list is provided as a courtesy. The list may not contain the most current websites.
The most current references must be accessed for up-to-date information.*

Accessible Sidewalk (ADA) <http://www.access-board.gov/guidelines-and-standards/streets-sidewalks>

Americans with Disabilities Act (ADA) (ADAAG) http://www.ada.gov/2010ADAstandards_index.htm

American National Standard Institute, *ANSI A300, (Part 1) for Tree Care Operations – Trees, Shrub, and Other Woody Plant Maintenance – Standard Practices (Pruning)*, available for purchase <http://webstore.ansi.org>

Florida Department of Agriculture and Consumer Services, Division of Plant Industry, *Florida Grades and Standards for Nursery Plants 2015* <http://www.freshfromflorida.com/Divisions-Offices/Plant-Industry/Bureaus-and-Services/Bureau-of-Plant-and-Apiary-Inspection>

Florida Department of Community Affairs (DCA), *Florida Board of Building Codes & Standards, 2017 Florida Building Code, Chapter 11 Florida Accessibility Code for Building Construction Part A*
http://www.floridabuilding.org/fbc/workgroups/Accessibility_Code_Workgroup/Documentation/CHAPTER_11_w_fl_a_specifics.htm

Florida Department of Transportation, *Program Management, Maintenance Specifications Workbook Supplemental Specifications, Section 580 Landscape Installation*
<http://www.fdot.gov/programmanagement/Maintenance/2019Jan/default.shtm>

Florida Department of Transportation, *FDOT Standard Plans for Design, Construction, Maintenance and Utility Operations on the State Highway System, Index 580-001 Landscape Installation*
<http://www.fdot.gov/design/standardplans/current/IDX/580-001.pdf>

Florida Department of Transportation, *FDOT Design Manual for Design, Construction, Maintenance and Utility Operations on the State Highway System, Chapter 212.11 Clear Sight Triangles*
<http://www.fdot.gov/roadway/FDM/current/2018FDM212Intersections.pdf>

Florida Department of Transportation, *FDOT Design Manual for Design, Construction, Maintenance and Utility Operations on the State Highway System, Chapter 215.2.3 Clear Zone Criteria and 215.2.4 Lateral Offset, Table 215.2.1 Clear Zone Width Requirements, Table 215.2.2 Lateral Offset Criteria (for Trees)*
<http://www.fdot.gov/roadway/FDM/current/2018FDM215RoadsideSafety.pdf>

Florida Department of Transportation, *FDOT Standard Plans for Design, Construction, Maintenance and Utility Operations on the State Highway System, Index Series 102-600 Traffic Control through Work Zones*
<http://www.fdot.gov/design/standardplans/current/IDX/102-600.pdf>

Department of Transportation, Landscape Architecture Website www.MyFloridaBeautiful.com

Florida Department of Transportation, *Maintenance Rating Program Handbook*
<http://www.dot.state.fl.us/statemaintenanceoffice/MaintRatingProgram.shtm>

Florida Department of Transportation Outdoor Advertising Database <http://www2.dot.state.fl.us/rightofway/>

Florida Exotic Pest Plant Council Invasive Plant Lists <http://www.fleppc.org/list/list.htm>

Florida Irrigation Society <http://www.fisstate.org>

Florida Power and Light (FPL), *Plant the Right Tree in the Right Place*
http://www.fpl.com/residential/trees/right_tree_right_place.shtml