



1 FRONT ELEVATION

1/4"=1'-0"



2 REAR ELEVATION

1/4"=1'-0"



GRANOFF ARCHITECTS

330 RAILROAD AVENUE  
GREENWICH, CT 06830

203.625.9460

WWW.GRANOFFARCHITECTS.COM

# FARRELL WELLINGTON ESTATES

FLORIDA

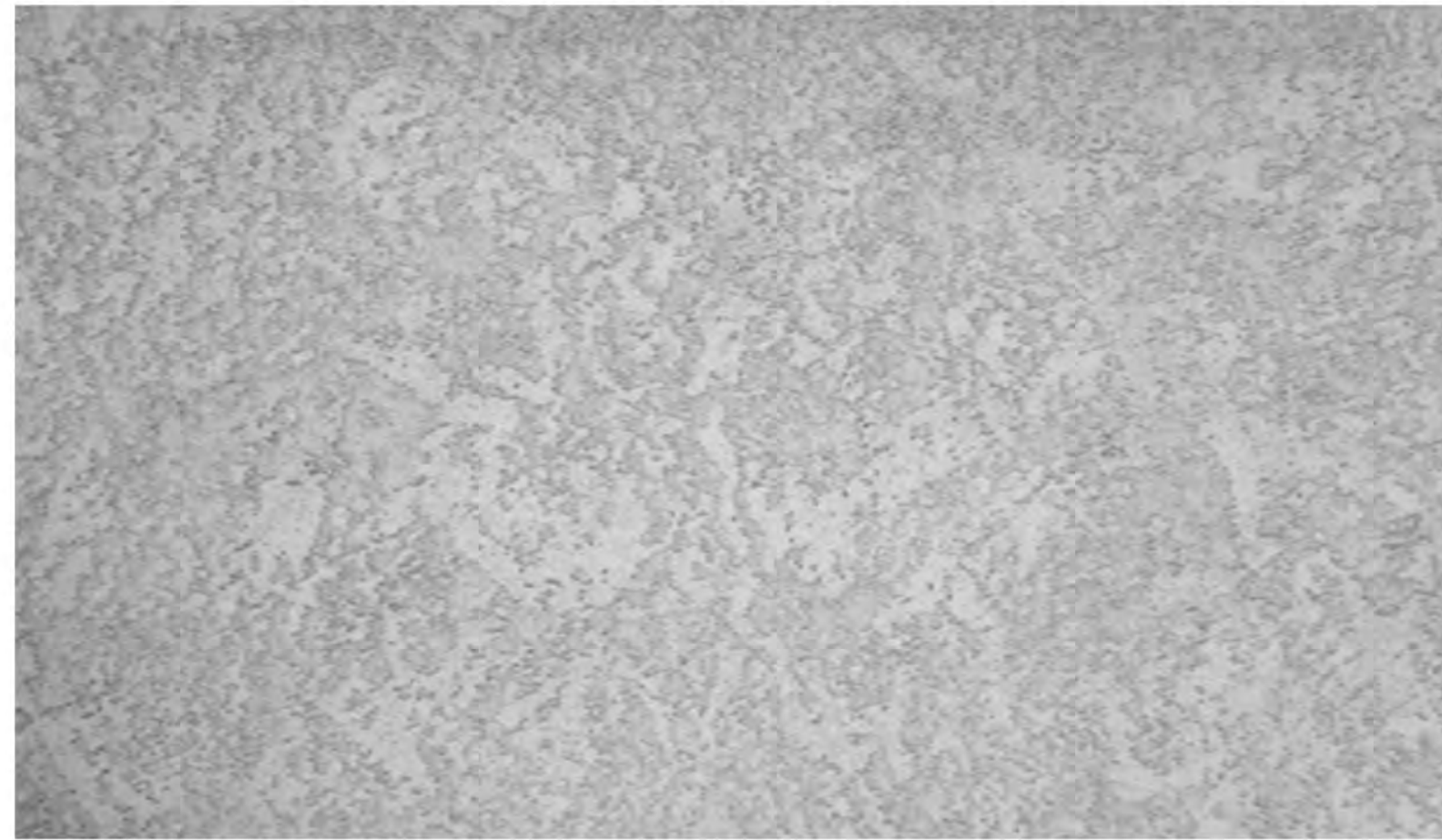
DATE: 07/14/2025

DRAWING NO.:

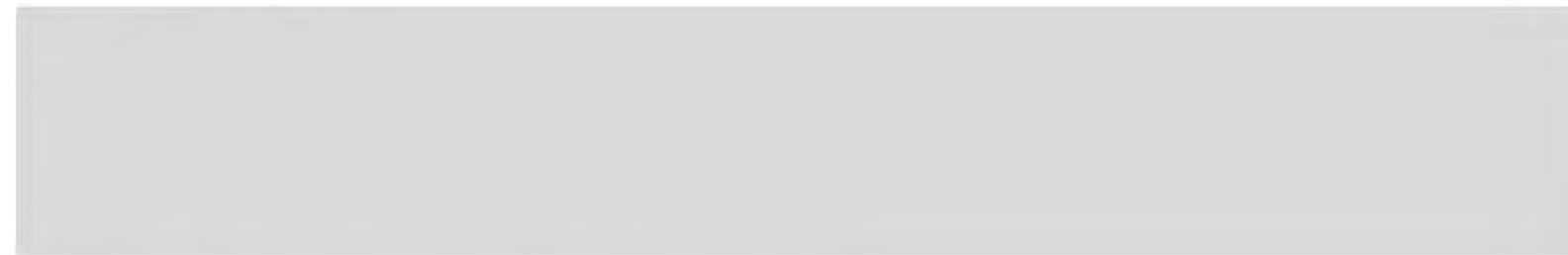
LOT 22

© 2022 GRANOFF ARCHITECTS  
These drawings, concepts, designs and ideas are the property of R.S. Granoff Architects, P.C. They may not be copied, reproduced, disclosed to others, or used in connection with any work other than the specified project for which they were prepared, in whole or in part, without prior written consent of R.S. Granoff Architects, P.C.





3 COAT STUCCO VENEER  
LACE FINISH W/ VERTICAL AND HORIZONTAL  
SCORING

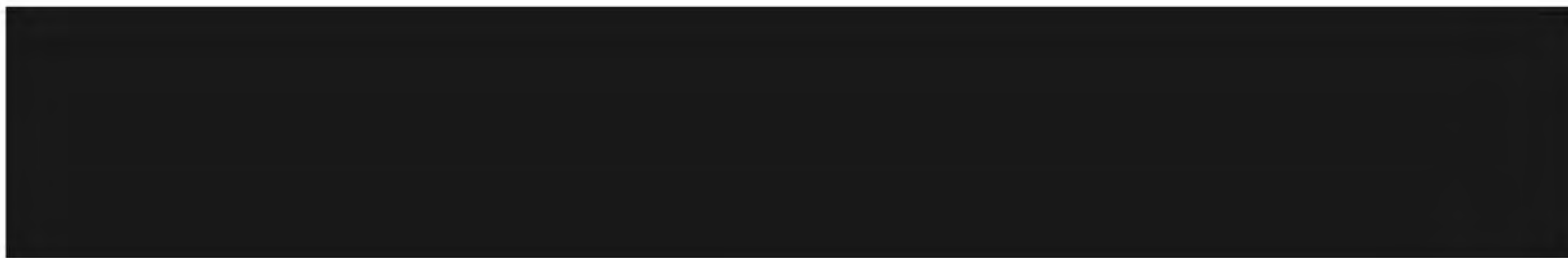


1

LIGHT WARM GRAY PAINT



MATTE BLACK CABLE RAIL SYSTEM

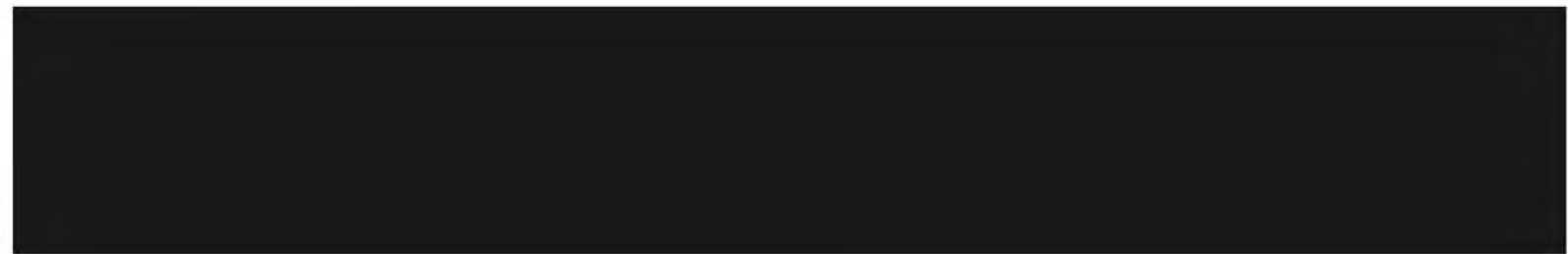


2

MATTE BLACK FINISH

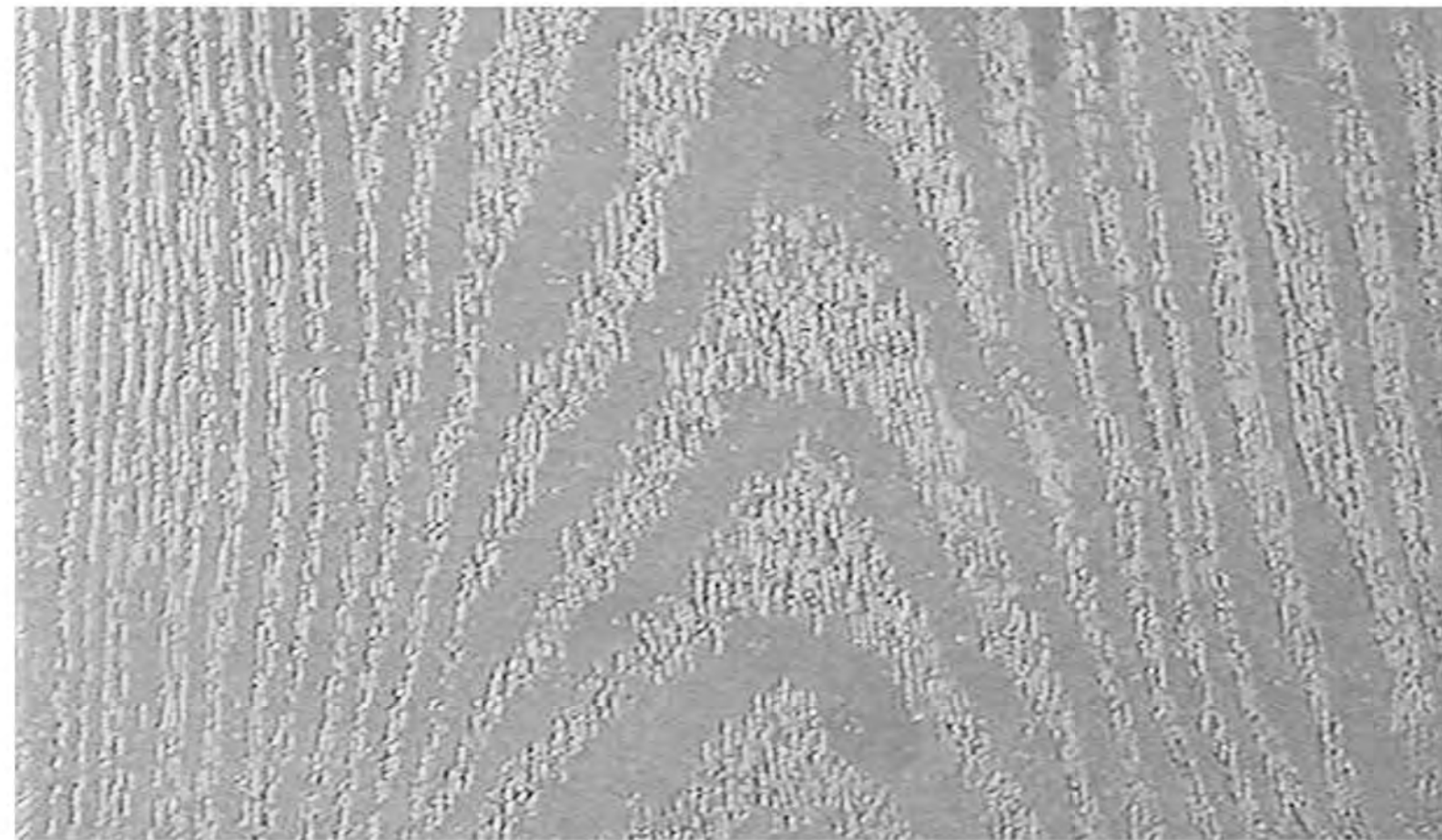


METAL FRAME HURRICANE RATED WINDOW  
SYSTEM



3

MATTE BLACK FINISH



NICKEL GAP PATTERN SOFFIT



4

DARK TEAK SOFFIT



NICKEL GAP PATTERN - HORIZONTAL

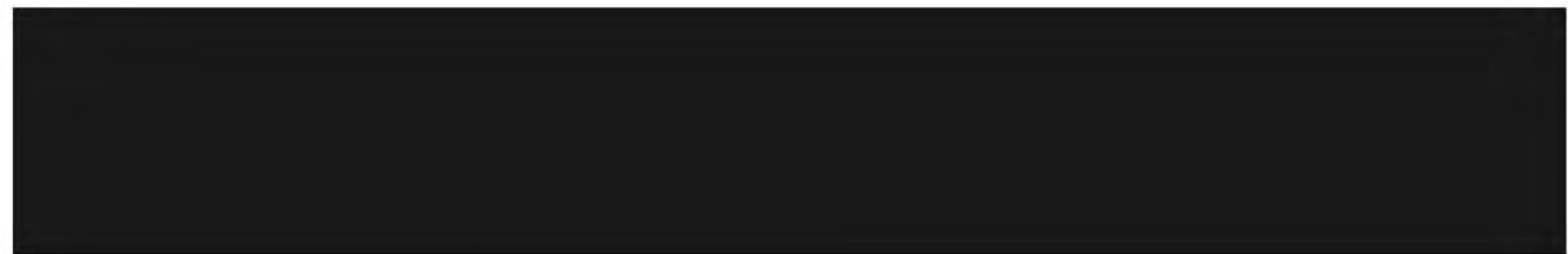


5

GOLDEN OAK WOOD TILE



PRE-FINISHED METAL FLASHING



6

MATTE BLACK FINISH



GRANOFF ARCHITECTS

330 RAILROAD AVENUE  
GREENWICH, CT 06830

203.625.9460

WWW.GRANOFFARCHITECTS.COM

**FARRELL WELLINGTON  
ESTATES**

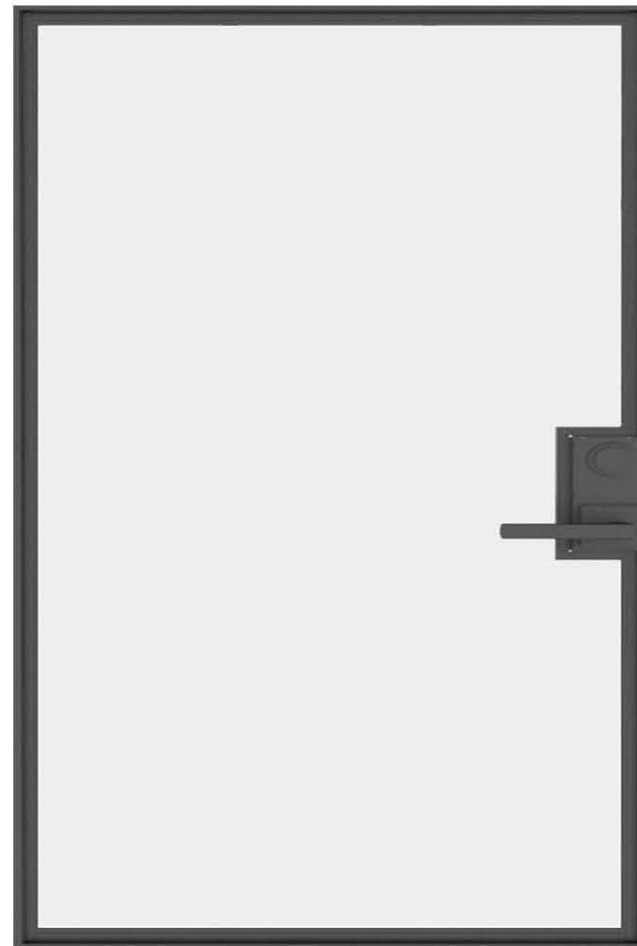
FLORIDA

DATE: 07/14/2025

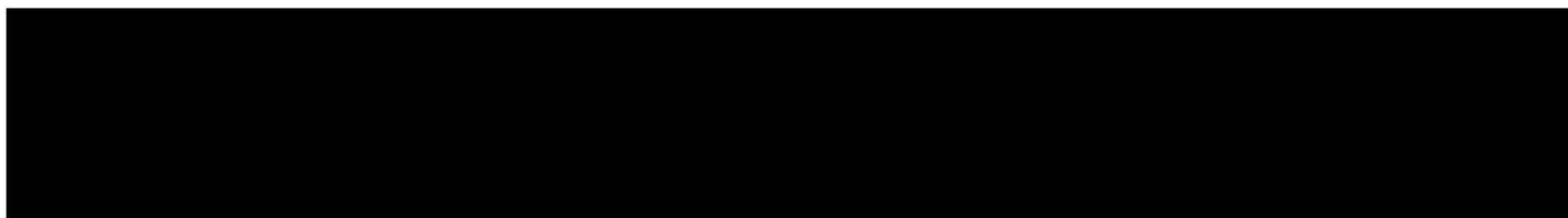
DRAWING NO.:

**LOT 22**

© 2022 GRANOFF ARCHITECTS  
These drawings, concepts, designs and ideas are the property of R.S. Granoff Architects, P.C. They may not be copied, reproduced, disclosed to others, or used in connection with any work other than the specified project for which they were prepared, in whole or in part, without prior written consent of R.S. Granoff Architects, P.C.



METAL FRAMED HURRICANE RATED DOOR AND WINDOW SYSTEM

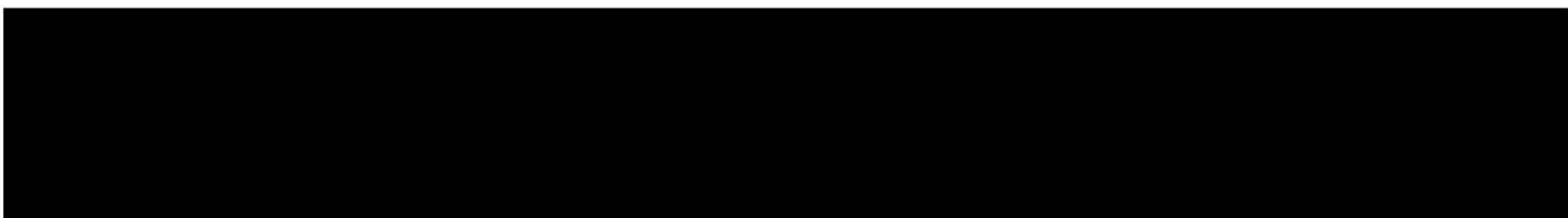


MATTE BLACK FINISH

7



MATTE BLACK METAL FRAMED HURRICANE RATED DOOR SYSTEM

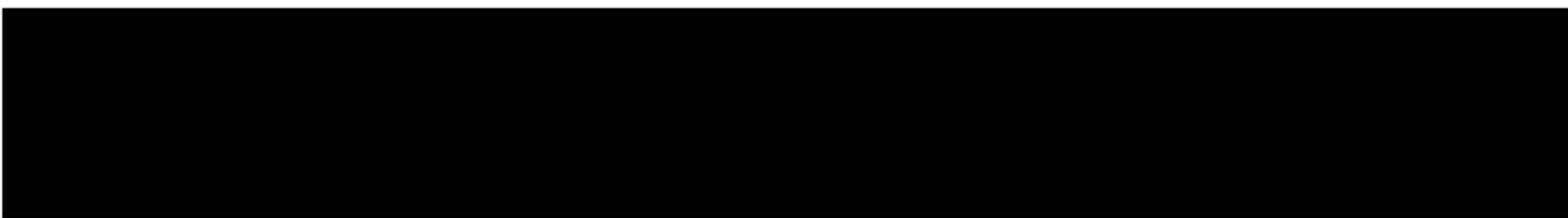


MATTE BLACK FINISH

8



HURRICANE-RATED O.H. GLASS GARAGE DOOR

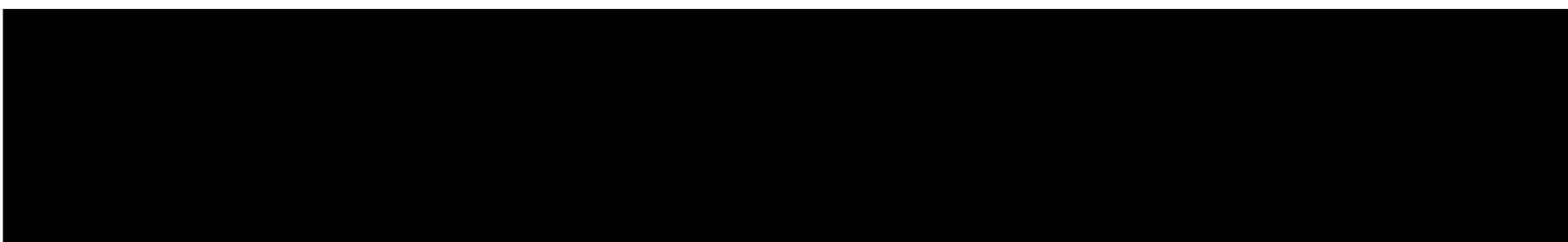


MATTE BLACK FRAME FINISH  
FROSTED GLASS PANELS

9



STANDING SEAM METAL ROOFING



MATTE BLACK FINISH

10

FARRELL WELLINGTON  
ESTATES

FLORIDA

DATE: 07/14/2025

DRAWING NO.:

LOT 22

© 2022 GRANOFF ARCHITECTS  
These drawings, concepts, designs and ideas are the property of R.S. Granoff Architects, P.C. They may not be copied, reproduced, disclosed to others, or used in connection with any work other than the specified project for which they were prepared, in whole or in part, without prior written consent of R.S. Granoff Architects, P.C.



GRANOFF ARCHITECTS

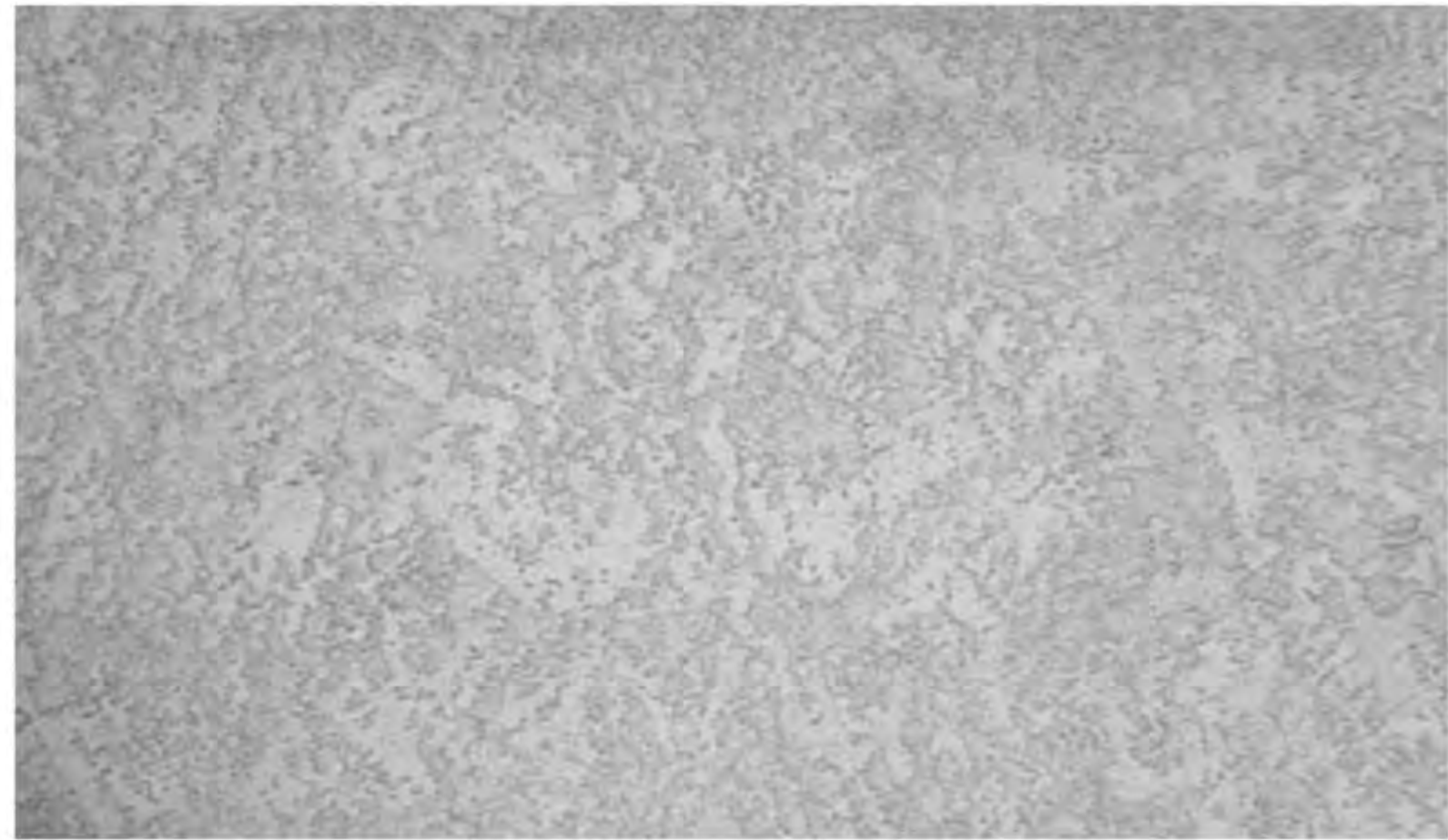
330 RAILROAD AVENUE  
GREENWICH, CT 06830

203.625.9460

WWW.GRANOFFARCHITECTS.COM







3 COAT STUCCO VENEER  
LACE FINISH W/ VERTICAL AND HORIZONTAL  
SCORING



LIGHT WARM GRAY PAINT



TEMPERED GLASS RAIL SYSTEM  
WITH ALUMINUM CAP



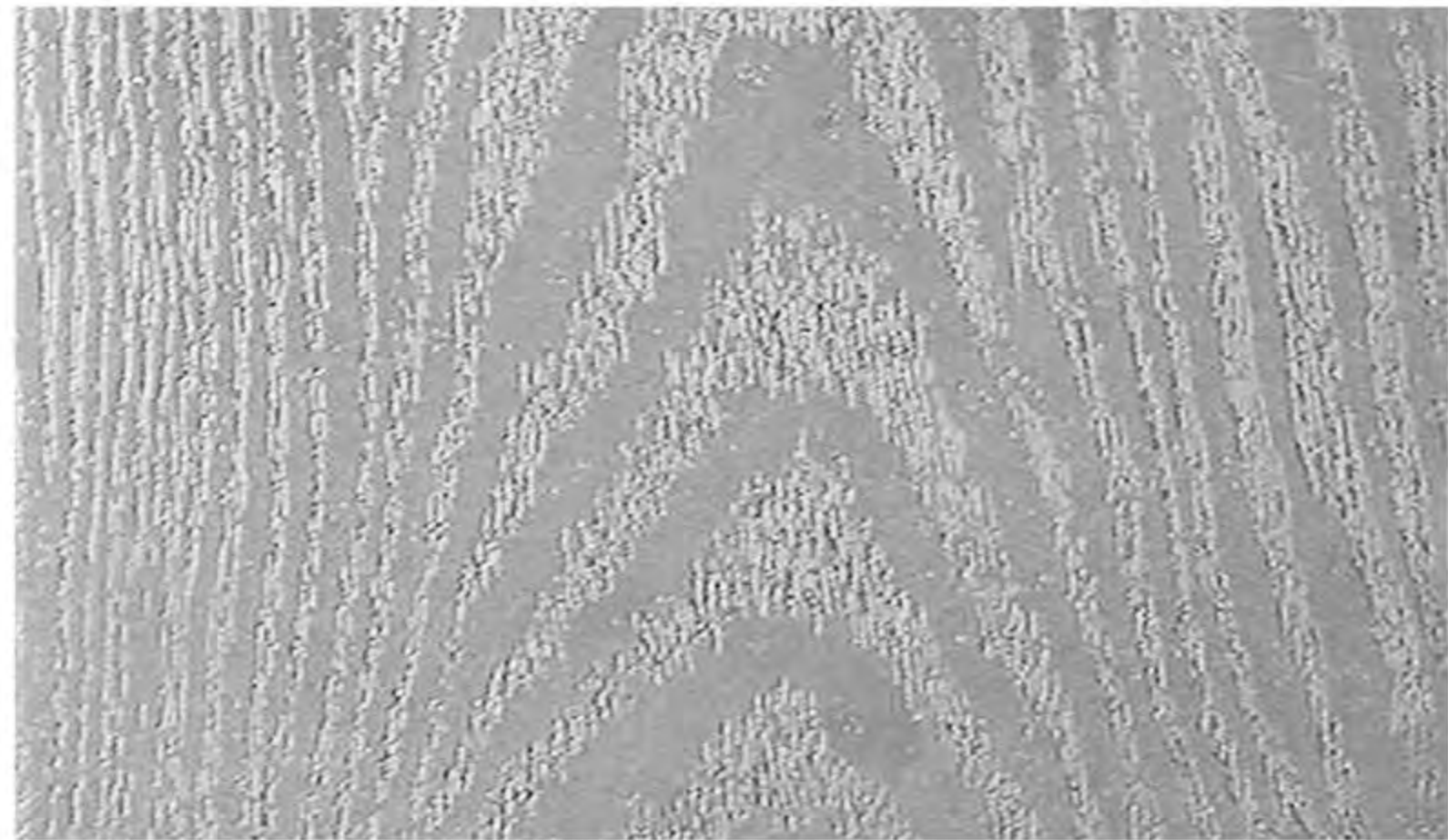
BRUSHED ALUMINUM FINISH



METAL FRAME HURRICANE RATED WINDOW  
SYSTEM



MATTE BLACK FINISH



NICKEL GAP COMPOSITE WOOD SOFFIT



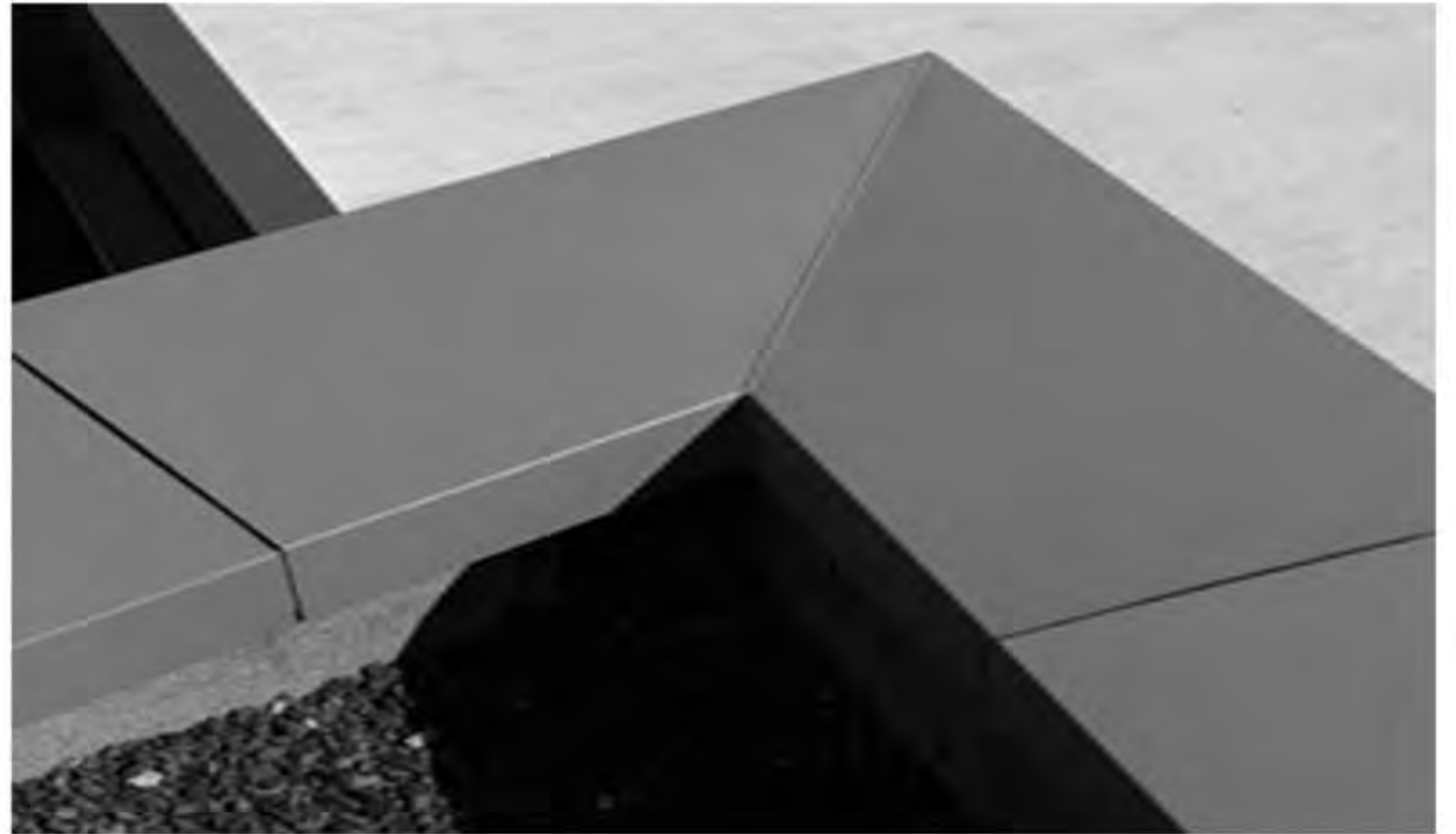
DARK TEAK SOFFIT



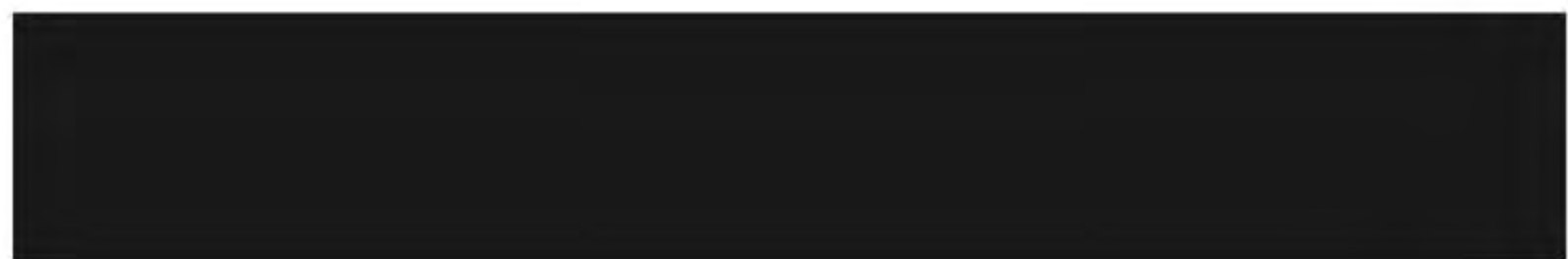
COMPOSIT SIDING - HORIZONTAL NICKEL GAP



GOLDEN OAK SIDING



PRE-FINISHED METAL FLASHING



MATTE BLACK FINISH



GRANOFF ARCHITECTS

330 RAILROAD AVENUE  
GREENWICH, CT 06830

203.625.9460

WWW.GRANOFFARCHITECTS.COM

**FARRELL ESTATES  
WELLINGTON**

FLORIDA

DATE: 10/27/2023

DRAWING NO.:

**MODEL 6**

© 2022 GRANOFF ARCHITECTS  
These drawings, concepts, designs and ideas are the property of Granoff Architects, P.C.  
They may not be copied, reproduced, disclosed to others, or used in connection with any  
work other than the specified project for which they were prepared, in whole or in part,  
without prior written consent of Granoff Architects, P.C.



METAL FRAMED HURRICANE RATED DOOR AND WINDOW SYSTEM



MATTE BLACK FINISH

7



METAL FRAMED HURRICANE RATED HICKORY CLAD DOOR SYSTEM



MATTE BLACK FRAME GOLDEN OAK PANEL

8



HURRICANE-RATED O.H. GLASS GARAGE DOOR



MATTE BLACK FRAME FINISH FROSTED GLASS PANELS

9



STANDING SEAM METAL ROOFING



MATTE BLACK FINISH

10



GRANOFF ARCHITECTS

330 RAILROAD AVENUE  
GREENWICH, CT 06830

203.625.9460

WWW.GRANOFFARCHITECTS.COM

**FARRELL ESTATES  
WELLINGTON**

FLORIDA

DATE: 10/27/2023

DRAWING NO.:

**MODEL 6**

© 2022 GRANOFF ARCHITECTS  
These drawings, concepts, designs and ideas are the property of Granoff Architects, P.C.  
They may not be copied, reproduced, disclosed to others, or used in connection with any  
work other than the specified project for which they were prepared, in whole or in part,  
without prior written consent of Granoff Architects, P.C.