



State Road 80

Southern Blvd

Legend

**Stormwater Treatment Area**

Municipal Boundaries  
Equestrian Preserve Area

**Residential**

|   |                                |                |
|---|--------------------------------|----------------|
| A | 1 d.u./10 acre                 | Low Density    |
| B | 0.1 d.u./acre - 1.0 d.u./acre  |                |
| C | 1.0 d.u./acre - 3.0 d.u./acre  |                |
| D | 2.0 d.u./acre - 5.0 d.u./acre  | Medium Density |
| E | 3.0 d.u./acre - 8.0 d.u./acre  |                |
| F | 5.0 d.u./acre - 12.0 d.u./acre | High Density   |
| G | 5.0 d.u./acre - 18.0 d.u./acre |                |
| H | 5.0 d.u./acre - 22.0 d.u./acre |                |

**Commercial**

- Commercial
- Equestrian Commercial Recreation
- Open Space Recreation

**Mixed Use**

- Mixed Use
- Regional Commercial / LSMU

**Flex**

- Flex

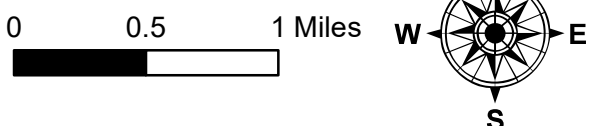
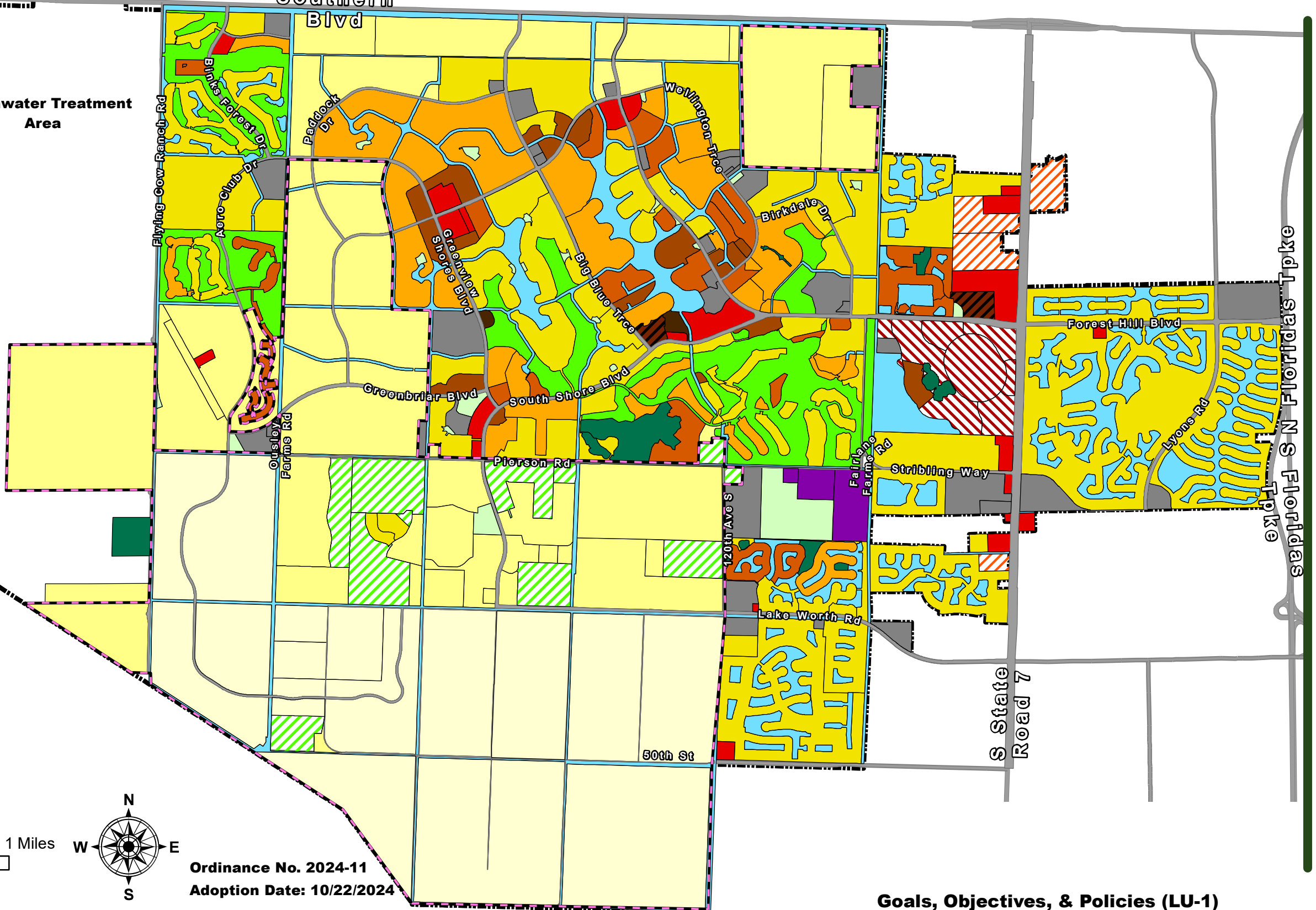
**Community Facility**

- Community Facilities

**Parks & Preserves**

- Park
- Conservation

Major Water Bodies



Ordinance No. 2024-11  
Adoption Date: 10/22/2024