

## Building 8

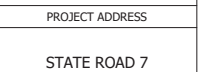
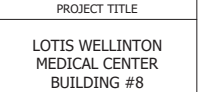
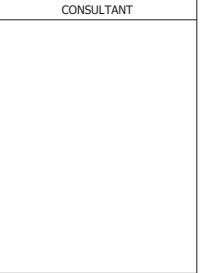


Architectural rendering of Building 8, a modern medical office center. The building features a white facade with large windows and blue accents. A prominent sign on the right side reads "Medical Office Center East Building". The building has a flat roof with blue overhangs and a modern, clean design.

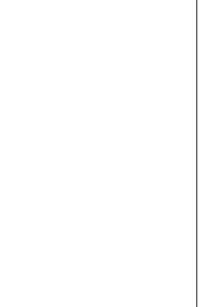
## Exhibit C

### Color and Material Palette

FINISH MATERIAL LEGEND		
MARK	DESCRIPTION	NAME / MANUF. / FINISH
1	ROOF CANTILEVER	PAINTED BLUE
2	WOOD TILE CLADDING	WALNUT
3	STONE TILE CLADDING	LIGHT GREY
4	ALUMINUM AWNING	MANUFACTURER BLACK
5	CONCRETE EYEBROW	PAINTED BLUE
6	STUCCO TRIM	PAINTED BLUE
7	CONCRETE EYEBROW	PAINTED WHITE
8	PAINTED STUCCO	PAINTED WHITE 3/4" SQUARE CUT STUCCO JOINTS
9	STOREFRONT	MANUFACTURER BLACK
10	DOWNSPOUT	MANUFACTURER WHITE
11	WALL LOUVER	POWDER COAT BLACK
12	ILLUMINATED CHANNEL LETTERS	MANUFACTURER WHITE
13	PARAPET CAP	MANUFACTURER BLACK
14	AUTOMATIC SLIDING DOOR	MANUFACTURER BLACK FRAME
15	PAINTED STUCCO	PAINTED WHITE
16	DECORATIVE WALL LOUVER	POWDER COAT BLACK
17	EXTERIOR LIGHT FIXTURE	CANNAM ALBANY II OW217-36-BA

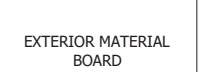
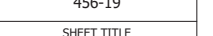
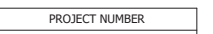
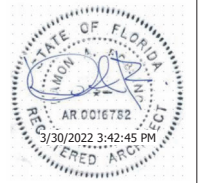


SUBMITTAL HISTORY		
No.	DATE	DESCRIPTION



ROBLING ARCHITECTURE CONSTRUCTION HEREBY PRESERVES ITS COMMON LAW COPYRIGHT AND OTHER PROPERTY RIGHTS IN THESE PLANS, SPECIFICATIONS, DESIGNS AND IDEAS. THESE PLANS, SPECIFICATIONS, AND IDEAS ARE NOT TO BE COPIED OR REPRODUCED IN ANY MANNER WITHOUT THE WRITTEN PERMISSION OF ROBLING ARCHITECTURE CONSTRUCTION.

© ROBLING ARCHITECTURE  
CONSTRUCTION, INC.



A8.00

## FINISH MATERIAL SAMPLES



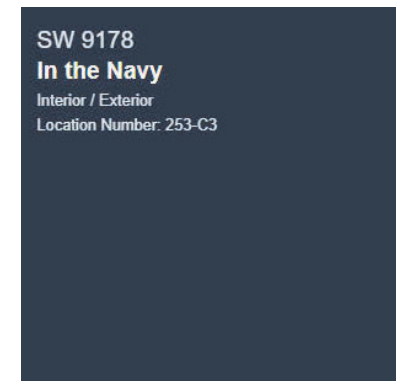
EXTERIOR LIGHT FIXTURE CAMMAN  
ALBANY II OW217



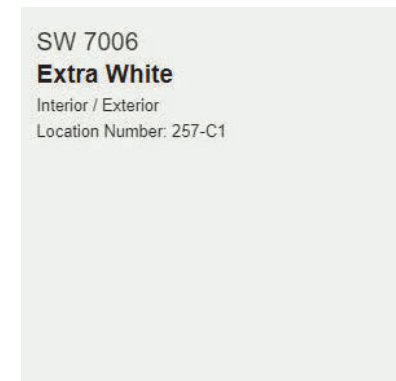
ALUMINUM WALL LOUVER POWDER  
COATED BLACK



## BRICK TILE CLADDING



SW 9178 IN THE NAVY



SW 7006 EXTRA WHITE



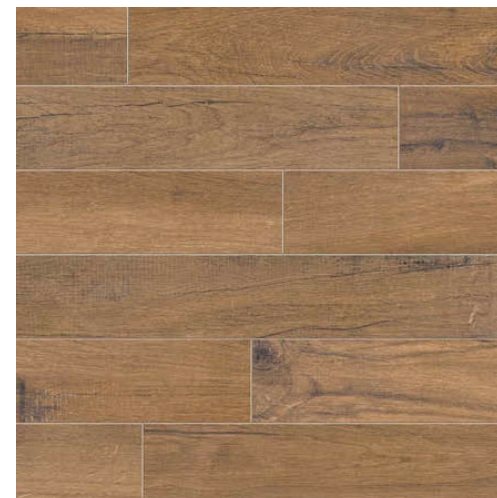
## ILLUMINATED CHANNEL LETTERS



ALUMINUM STOREFRONT SYSTEM IN ANODIZED  
ALUMINUM BLACK WITH LITE GRAY TINT GLASS



ALUMINUM LOUVERED AWNINGS IN MANUFACTURER  
STANDARD BLACK



## WOOD TILE CLADDING





FINISH MATERIAL SAMPLES



EXTERIOR LIGHT FIXTURE CAMMAN  
ALBANY II OW217



ALUMINUM WALL LOUVER POWDER  
COATED BLACK



BRICK TILE CLADDING



ALUIMNUM STOREFRONT SYSTEM IN ANODIZED  
ALUMINUM BLACK WITH LITE GRAY TINT GLASS



ALUIMNUM LOUVERED AWNINGS IN MANUFACTURER  
STANDARD BLACK



WOOD TILE CLADDING

FINISH MATERIAL LEGEND		
MARK	DESCRIPTION	NAME / MANUF. / FINISH
1	ROOF CANTILEVER	PAINTED BLUE
2	WOOD TILE CLADDING	WALNUT
3	STONE TILE CLADDING	GREY
4	ALUMINUM AWNING	MANUFACTURER BLACK
5	CONCRETE EYEBROW	PAINTED BLUE
6	STUCCO TRIM	PAINTED BLUE
7	CONCRETE EYEBROW	PAINTED WHITE
8	PAINTED STUCCO	PAINTED WHITE 3/4" SQUARE CUT STUCCO JOINTS
9	STOREFRONT	MANUFACTURER BLACK
10	DOWNSPOUT	MANUFACTURER WHITE
11	WALL LOUVER	POWDER COAT BLACK
12	DIMENSIONAL LETTERS	POWDER COAT BLACK
13	PARAPET CAP	MANUFACTURER BLACK
14	AUTOMATIC SLIDING DOOR	MANUFACTURER BLACK FRAME
15	PAINTED STUCCO	PAINTED WHITE
16	DECORATIVE WALL LOUVER	POWDER COAT BLACK
17	EXTERIOR LIGH FIXTURE	CANNAM ALBANY II SILVER

SW 9178  
In the Navy  
Interior / Exterior  
Location Number: 253-C3

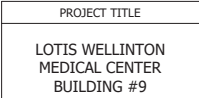
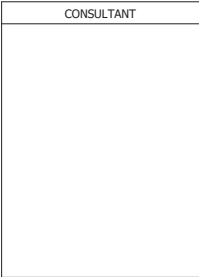
SW 9178 IN THE NAVY

SW 7006  
Extra White  
Interior / Exterior  
Location Number: 257-C1

SW 7006 EXTRA WHITE



ILLUMINATED CHANNEL  
LETTERS



SUBMITTAL HISTORY		
No.	DATE	DESCRIPTION

ROBLING ARCHITECTURE CONSTRUCTION HEREBY PRESERVES ITS COMMON LAW COPYRIGHT AND OTHER PROPERTY RIGHTS IN THESE PLANS, SPECIFICATIONS, DESIGN AND IDEAS. THESE PLANS, SPECIFICATIONS, AND IDEAS ARE NOT TO BE COPIED OR REPRODUCED IN ANY MANNER WITHOUT THE WRITTEN PERMISSION OF ROBLING ARCHITECTURE CONSTRUCTION.

