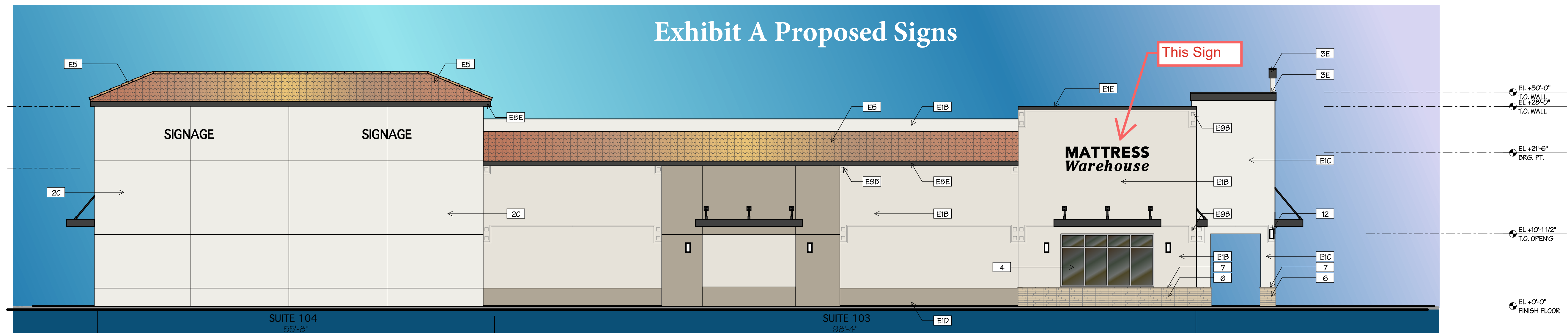
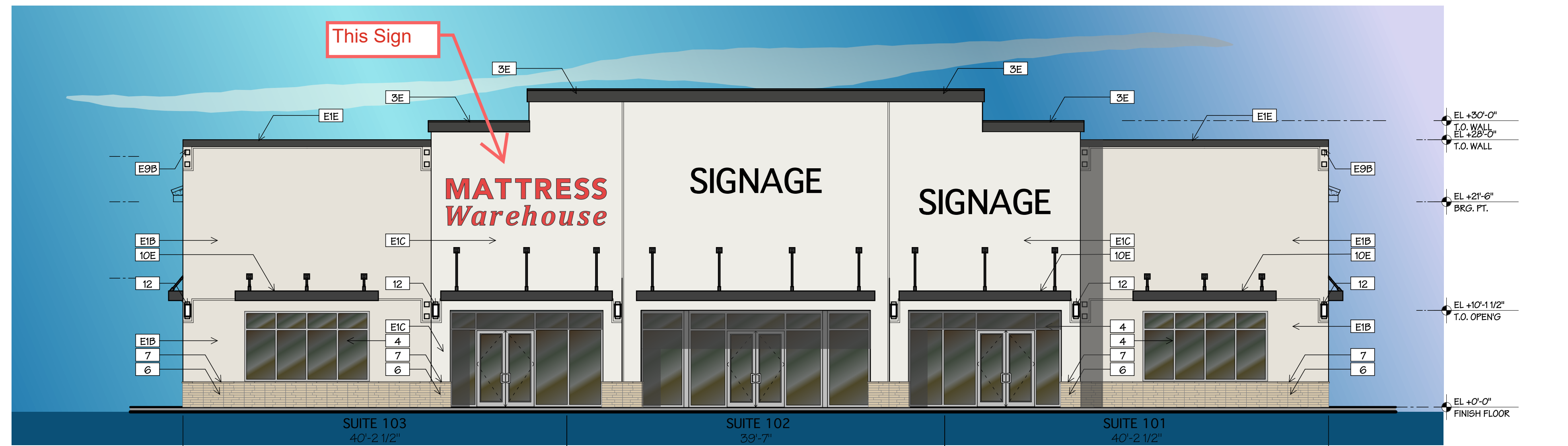


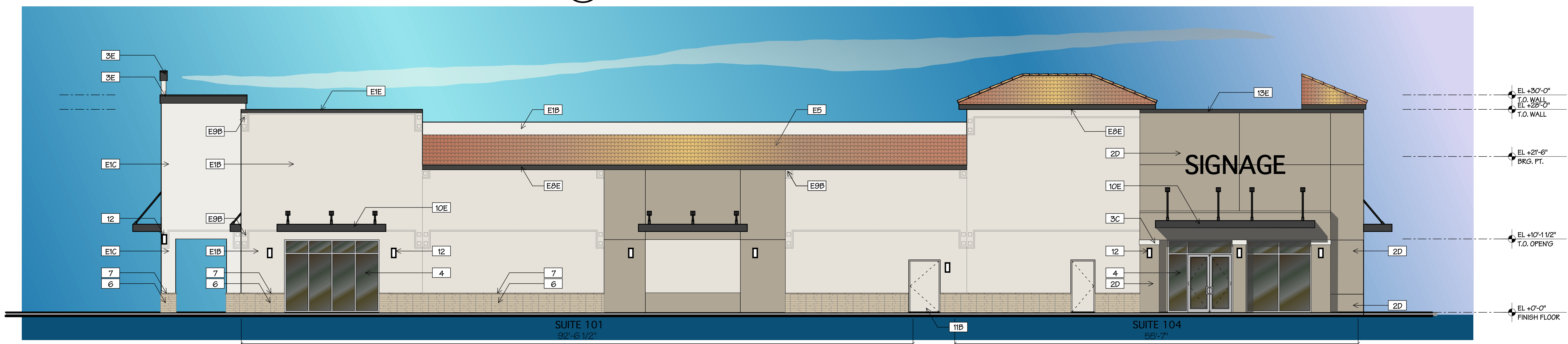
Exhibit A Proposed Signs



1 EAST ELEVATION



2 NORTH ELEVATION



3 WEST ELEVATION

MATERIAL SCHEDULE			
WELLINGTON E			7/23/25
MK	Material	Finish	Remarks
1	CONCRETE TILT PANEL	TEXTURE / PAINT	
2	CEMENT PLASTER	SAND FLOAT / PAINT	
3	E1F8 BAND	FINE SAND FINISH / PAINT	
4	ALUMINUM STOREFRONT	CLEAR ANODIZED ALUMINUM W/ IMPACT RATED CLEAR GLASS	
5	CONCRETE ROOF TILE	BARREL ROOF TILE	PRESSURE WASH
6	STONE VENEER	DESERT SAND - STACK	ARRISCRAFT
7	CAST STONE TRIM	SAND FINISH	
8	WOOD FASCIA	SAND FLOAT / PAINT	
9	TILE EMBLEM		
10	METAL CANOPY	PRE-FINISHED ALUMINUM	
11	METAL DOOR	PRE-FINISHED ALUMINUM	
12	LIGHT FIXTURE		
13	METAL	PAINT	
B	PAINT - TAN	HERON PLUME SW 6070	SHERWIN WILLIAMS
C	PAINT - OFF-WHITE	PURE WHITE SW 7005	SHERWIN WILLIAMS
D	PAINT - TAUPE	ETHEREAL WOOD SW 7639	SHERWIN WILLIAMS
E	PAINT - DARK TAUPE	IRON ORE SW 7069	SHERWIN WILLIAMS

NOTES:
 - MATERIAL TAGS WITH THE 'E' PREFIX ARE EXISTING MATERIALS.
 - MATERIAL TAGS WITH A SUFFIX ARE NEW PAINT / FINISH COLORS

MARK	DESCRIPTION	DATE

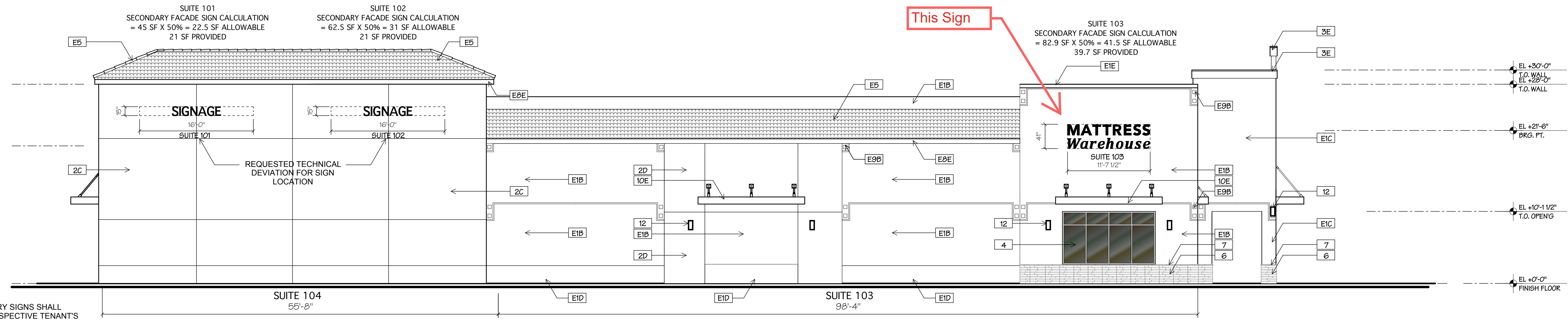
IWA ARCHITECTURE, LLC
 ARCHITECTURE / PLANNING
 Robert Weber
 Florida Licensed Architect
 AR-0011313
 1701 West Hillsboro Blvd, Suite 308
 Deerfield Beach, Florida 33442
 P: 561-750-5208

WELLINGTON MALL TRACT 'E'
OFFICE DEPOT REMODEL
 2495 S. State Road 7
 PALM BEACH COUNTY
 WELLINGTON, FL

JOB NUMBER	24017
SCALE	AS NOTED
ISSUE DATE	5/29/26
PERMIT DATE	
BID DATE	

DRAWN BY	RW
CHECKED BY	RW
DISCIPLINE	ARCHITECTURE
PLAN TYPE	
SHEET NUMBER	A-6

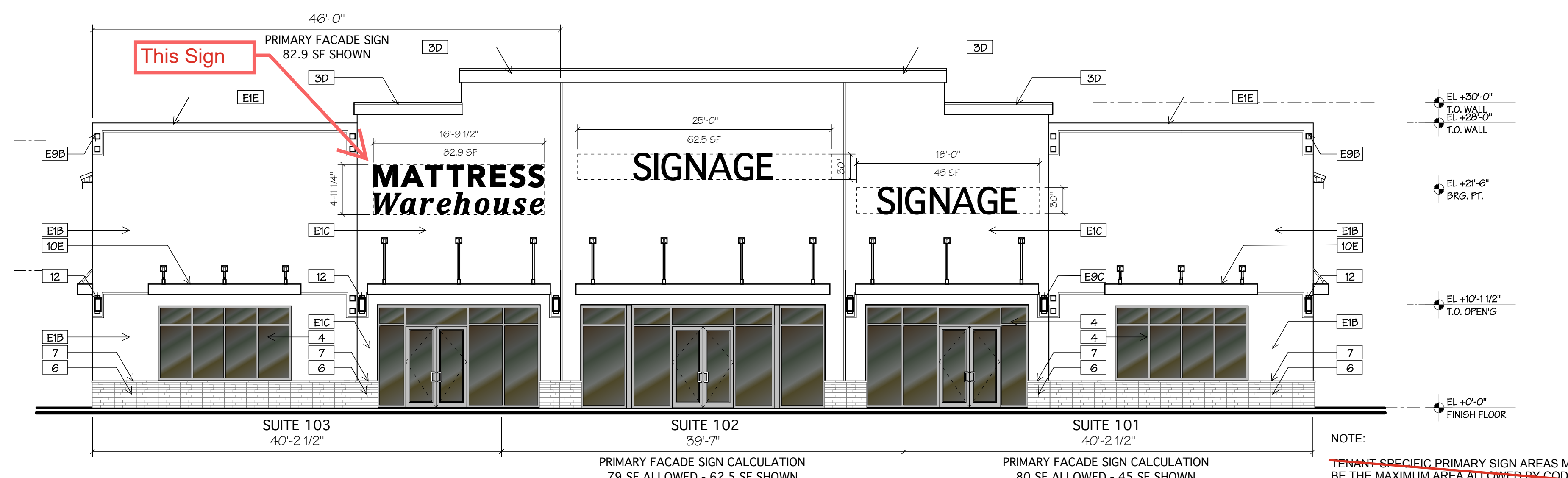
© 2024 IWA ARCHITECTURE
 THIS SET OF PLANS SHALL BE DISTRIBUTED AS COMPLETE SETS OF DRAWINGS. DO NOT SEPARATE DRAWINGS BY DISCIPLINE. WRITTEN FIGURES INDICATING DIMENSIONS SHALL TAKE PRECEDENCE OVER SCALE DRAWINGS.



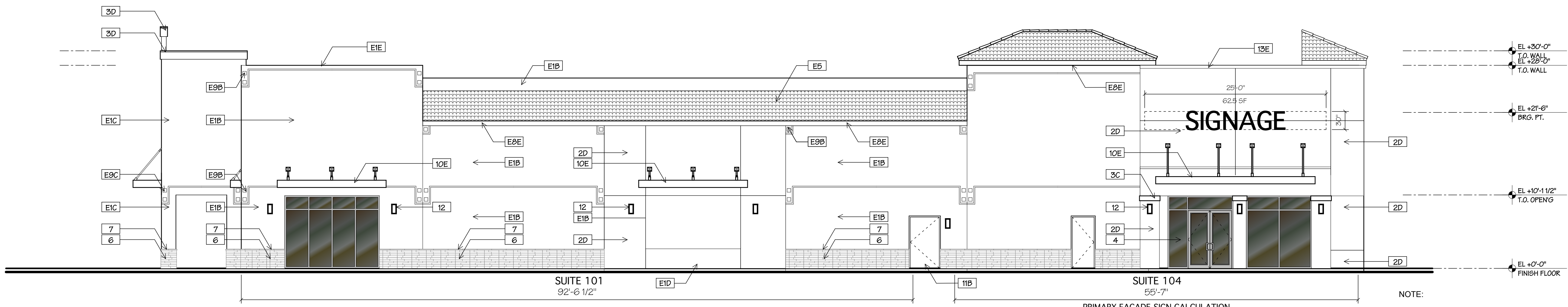
1 EAST ELEVATION

MATERIAL SCHEDULE			
WELLINGTON E			7/23/25
MK	Material	Finish	Remarks
1	CONCRETE TILT PANEL	TEXTURE / PAINT	
2	CEMENT PLASTER	SAND FLOAT / PAINT	
3	EI#5 BAND	FINE SAND FINISH / PAINT	
4	ALUMINUM STOREFRONT	CLEAR ANODIZED ALUMINUM W/ IMPACT RATED CLEAR GLASS	
5	CONCRETE ROOF TILE	BARREL ROOF TILE	PRESSURE WASH
6	STONE VENEER	DESERT SAND - STACK	ARRISCRAFT
7	CAST STONE TRIM	SAND FINISH	
8	WOOD FASCIA	SAND FLOAT / PAINT	
9	TILE EMBLEM		
10	METAL CANOPY	PRE-FINISHED ALUMINUM	
11	METAL DOOR	PRE-FINISHED ALUMINUM	
12	LIGHT FIXTURE		
13	METAL	PAINT	
B	PAINT - TAN	HERON PLUME SW 6070	SHERWIN WILLIAMS
C	PAINT - OFF-WHITE	PURE WHITE SW 7005	SHERWIN WILLIAMS
D	PAINT - TAUPE	ETHEREAL WOOD SW 7639	SHERWIN WILLIAMS
E	PAINT - DARK TAUPE	IRON ORE SW 7069	SHERWIN WILLIAMS

NOTES:
- MATERIAL TAGS WITH THE 'E' PREFIX ARE EXISTING MATERIALS.
- MATERIAL TAGS WITH A SUFFIX ARE NEW PAINT / FINISH COLORS



2 NORTH ELEVATION



3 WEST ELEVATION

SIGN AREA CALCULATIONS									
SUITE	FRONTAGE (FT)	PRIMARY SIGN AREA ALLOWED (SQ FT)	NUMBER OF PRIMARY SIGNS ALLOWED	PRIMARY SIGN AREA PROPOSED (SQ FT)	NUMBER OF PRIMARY SIGNS PROPOSED	SECONDARY SIGN AREA ALLOWED (SQ FT)	NUMBER OF SECONDARY SIGNS ALLOWED	SECONDARY SIGN AREA PROPOSED (SQ FT)	NUMBER OF SECONDARY SIGNS PROPOSED
101	40.2	80	1	45	1	22.5	2	21	1
102	39.6	79	1	62.5	1	31.25	2	21	1
103	46.40.2	82.9	1	82.9	1	41.45	2	39.7	1
104	55.6	111	1	62.5	1	31.25	2	21	1

TECHNICAL DEVIATION FOR SUITES 101 AND 102 SECONDARY SIGNS - FOR SIGN LOCATION

MARK	DESCRIPTION	DATE

MWA ARCHITECTURE, LLC
ARCHITECTURE / PLANNING
Robert Weber
Florida Licensed Architect
AR-0011313
1701 West Hillsboro Blvd, Suite 308
Deerfield Beach, Florida 33442
P: 561-750-5208

WELLINGTON MALL TRACT 'E'
OFFICE DEPOT REMODEL
2495 S. State Road 7
PALM BEACH COUNTY
WELLINGTON, FL

JOB NUMBER	24017
SCALE	AS NOTED
ISSUE DATE	5/29/26
PERMIT DATE	
BID DATE	
DRAWN BY	RW
CHECKED BY	ARCHITECTURE
DISCIPLINE	ARCHITECTURE
PLAN TYPE	
SHEET NUMBER	A-4

24017 - A3.01 - 15 - 5.29.26 PLOT: 5.29.26