

TACO

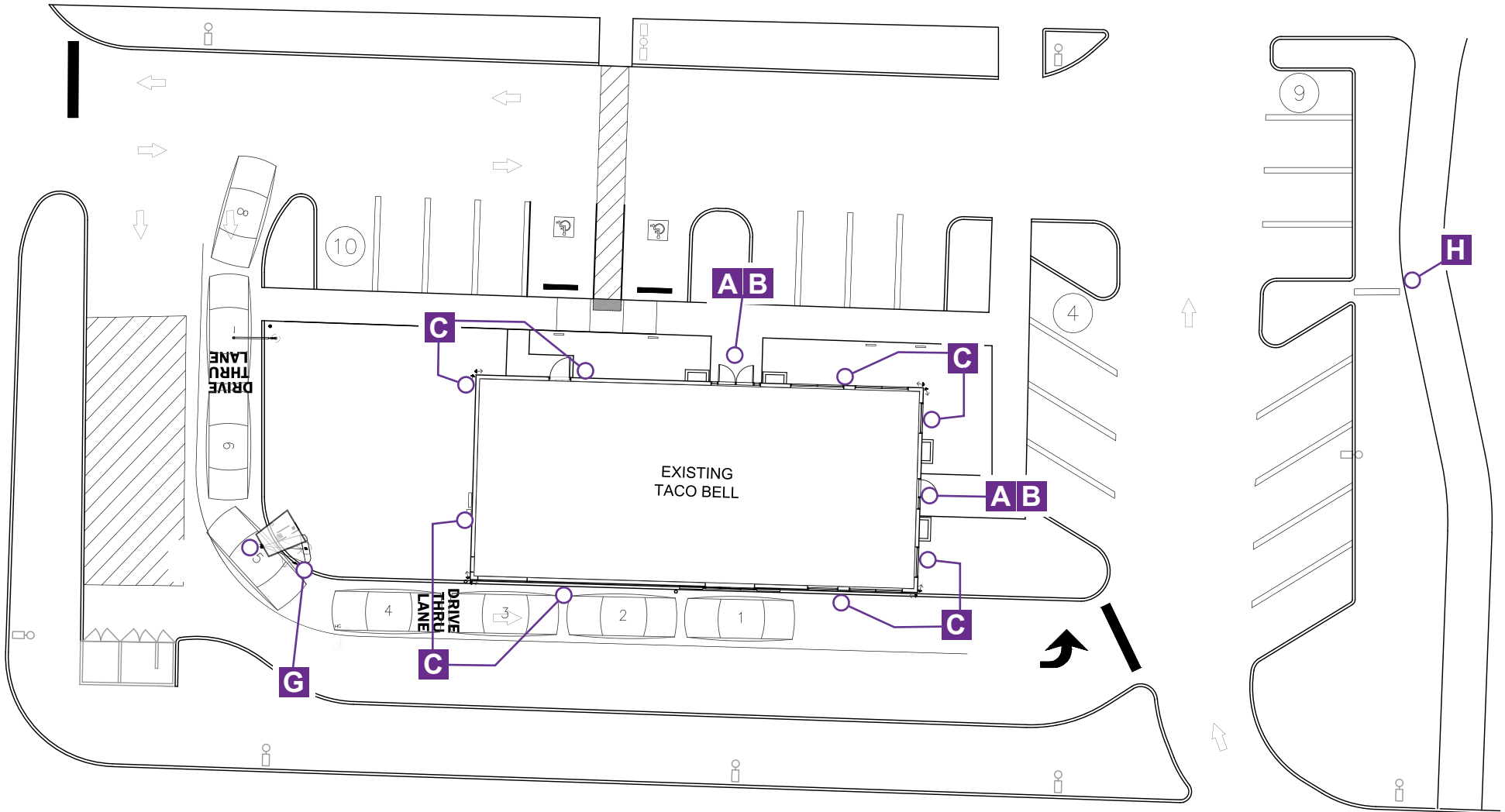


BELL™

**Site #33104
2801 S. State Rd. 7
Wellington, FL
01/03/2024**

SITE PLAN

Qty.	SIGN CODE	DESCRIPTION	
A	2	TAC-BELL-42P-FL	Large Swinging Bell - Purple, Face Lit - 3'-6" h x 3'-10 3/8" w
B	2	TAC-CL-14W-9.2CM-L	Medium TB 14" White Channel Letters, Awning Mount - Linear
C	8	COVE LIGHT	Purple LED Wall Downlighting, Power supplies as necessary
G	1	TAC-DMB-EXT-FNDTN	Digital MB - Existing Foundation, Hilti System, Non. Std. Hours
H	1	TAC-CUST-FACE-KIT	New Logo Faces, Lighting Upgrade Kit - Custom Size TBD

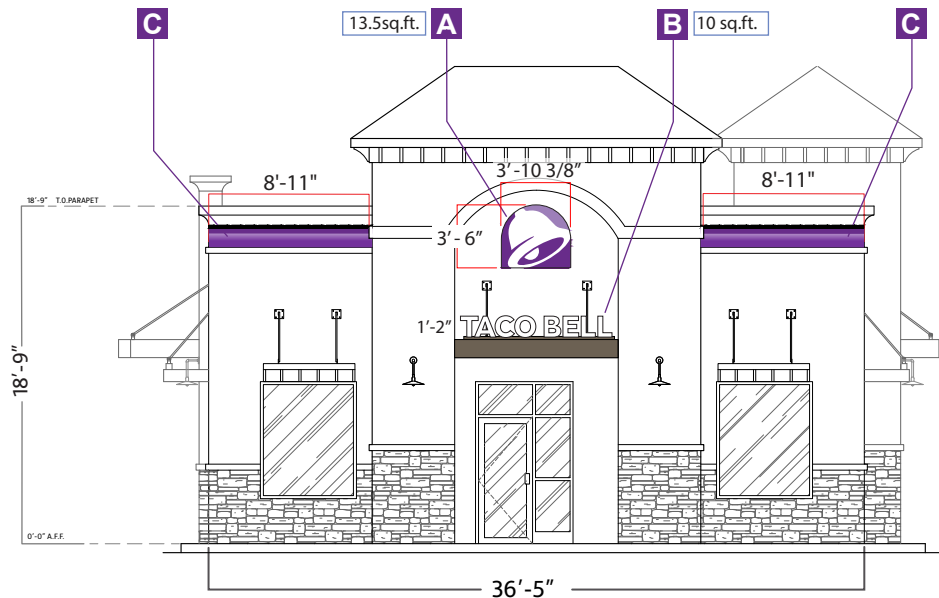


ELEVATIONS



EXISTING

Qty.	SIGN CODE	DESCRIPTION
A 1	TAC-BELL-42P-FL	Large Swinging Bell - Purple, Face Lit - 3'-6" h x 3'-10 3/8" w
B 1	TAC-CL-14W-9.2CM-L	Medium TB 14" White Channel Letters, 9'-2" Rad. Awning Mount - Linear
C 2	COVE LIGHT	Purple LED Wall Downlighting, Power supplies as necessary



FRONT ELEVATION

NOTE: Refer to "Wall - Downlighting" cutsheets for layouts and specific details.

NOTE: The Cove Lighting is a low intensity LED illumination shining in a downward direction.

NOTE: Letters on custom raceways will be mounted to existing canopies.

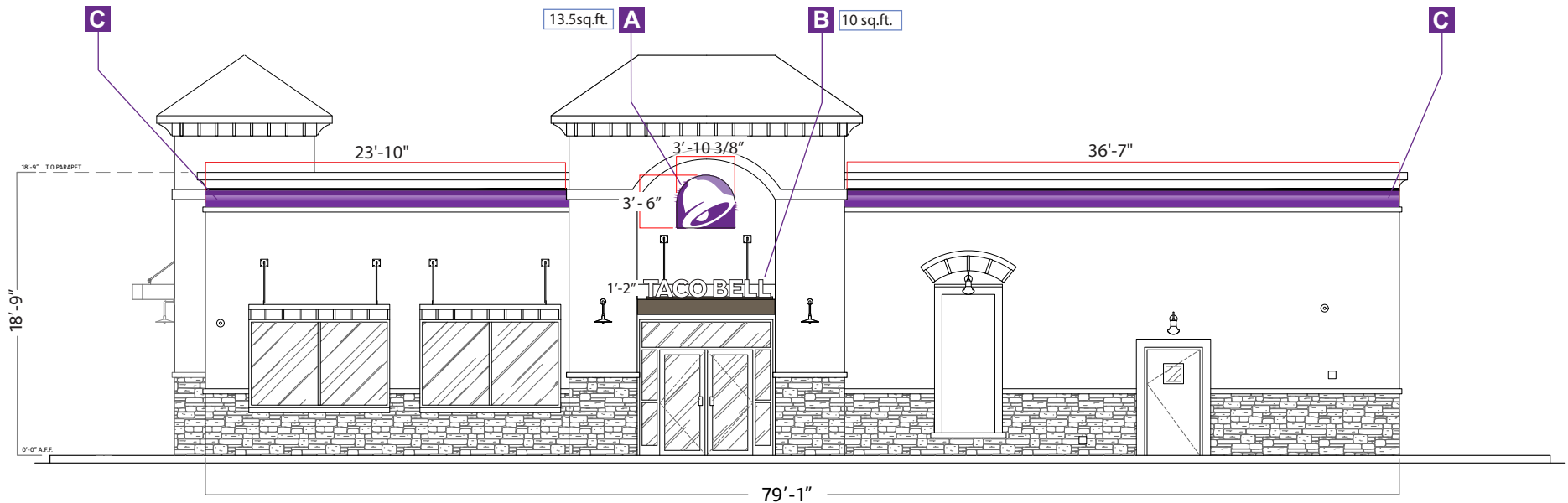


ELEVATIONS



EXISTING

Qty.	SIGN CODE	DESCRIPTION
A 1	TAC-BELL-42P-FL	Large Swinging Bell - Purple, Face Lit - 3'-6" h x 3'-10 3/8" w
B 1	TAC-CL-14W-9.2CM-L	Medium TB 14" White Channel Letters, 9'-2" Rad. Awning Mount - Linear
C 2	COVE LIGHT	Purple LED Wall Downlighting, Power supplies as necessary



PORTAL ELEVATION

NOTE: Refer to "Wall - Downlighting" cutsheets for layouts and specific details.

NOTE: The Cove Lighting is a low intensity LED illumination shining in a downward direction.

NOTE: Letters on custom raceways will be mounted to existing canopies.

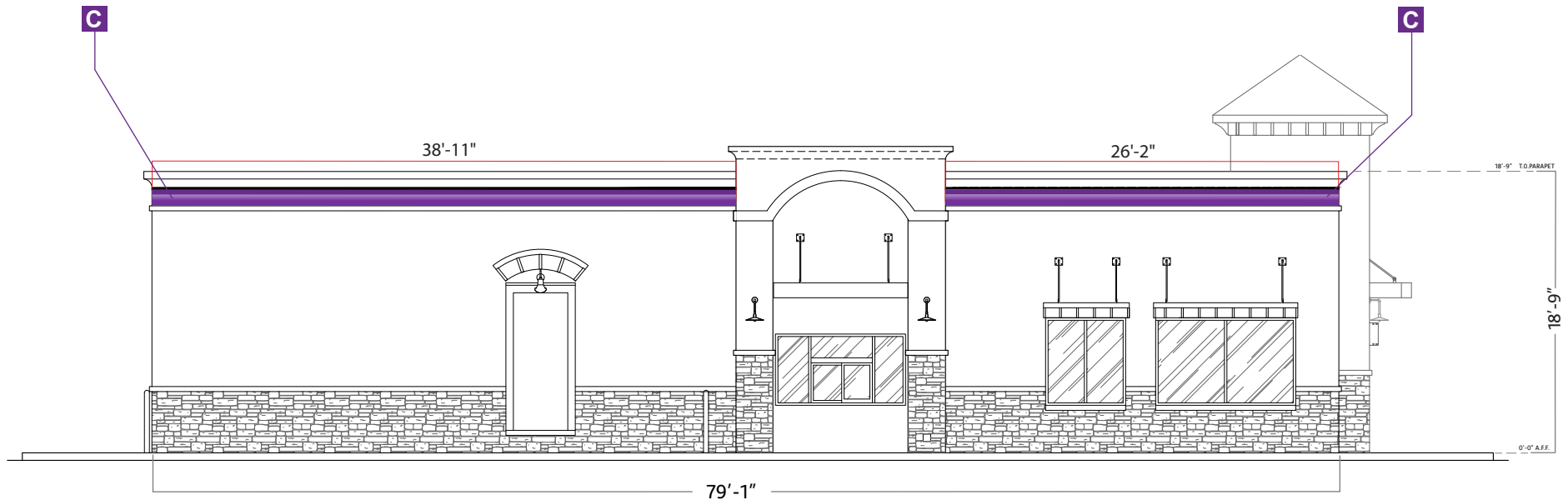


ELEVATIONS

Qty.	SIGN CODE	DESCRIPTION
C 2	COVE LIGHT	Purple LED Wall Downlighting, Power supplies as necessary



EXISTING



DT ELEVATION

NOTE: Refer to "Wall - Downlighting" cutsheets for layouts and specific details.

NOTE: The Cove Lighting is a low intensity LED illumination shining in a downward direction.

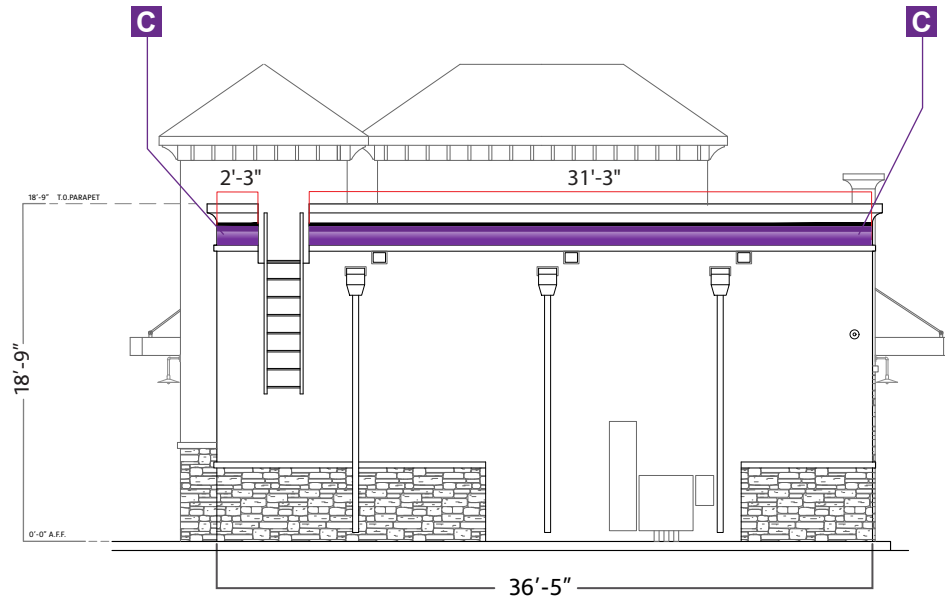


ELEVATIONS



EXISTING

Qty.	SIGN CODE	DESCRIPTION
C 2	COVE LIGHT	Purple LED Wall Downlighting, Power supplies as necessary



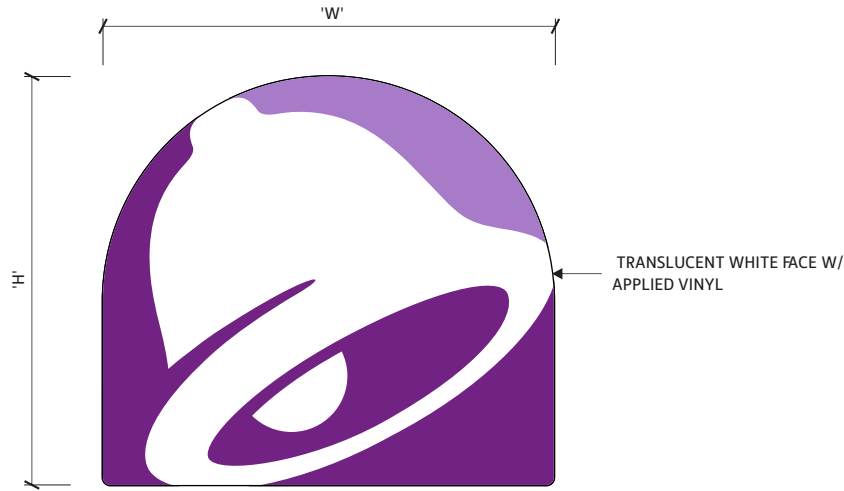
REAR ELEVATION

NOTE: Refer to "Wall - Downlighting" cutsheets for layouts and specific details.

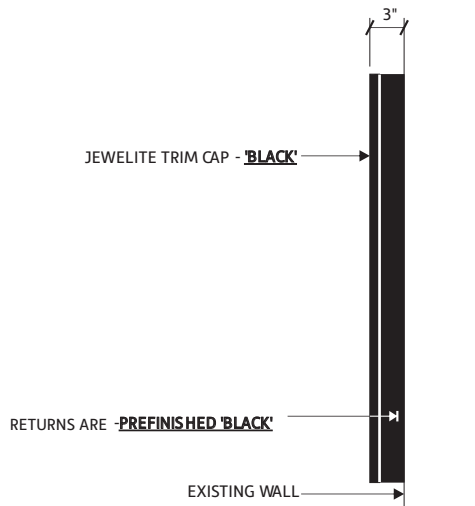
NOTE: The Cove Lighting is a low intensity LED illumination shining in a downward direction.



A TAC-BELL-42P-FL



FRONT ELEVATION
NTS



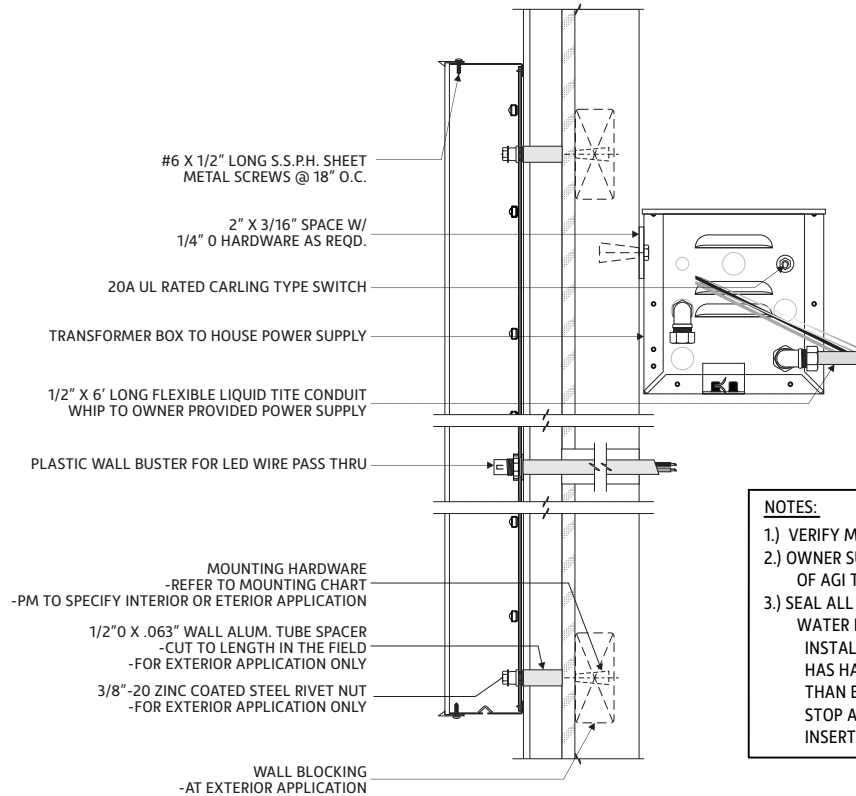
SIDE VIEW
NTS

NOTE:
1.) THIS DRAWING IS FOR INSTALLATION PURPOSES ONLY.
2.) BELL SIZE VARIES PER LOCATION
3.) SHOP TO PROVIDE TOUCH UP PAINT TO INSTALLER.

SIGN SCHEDULE				
QTY	INT/EXT	SIGN TYPE	'H'	'W'
		BELL-EX	2'- 0 1/8"	± 2'- 2 5/8"
		BELL-SM	2'- 6"	± 2'- 9 1/8"
		BELL-MD	3'- 0"	± 3'- 3 3/8"
2	EXT.	BELL-LG	3'- 6"	± 3'- 10 3/8"

MOUNTING HARDWARE	
Exterior -	3/8" ZINC PLATED STEEL THREADED ROD THRU WALL W/BLOCKING
Interior -	3/8" SNAP TOGGLE BOLTS

NOTES:
1.) THREADED ROD WILL BE PROVIDED STANDARD, ALL OTHER HARDWARE IS TO BE PROVIDED BY THE INSTALLER AS REQUIRED.
2.) DESIGN INTENDED FOR NO GREATER THAN 3RD STORY MOUNTING - HIGHER ELEVATIONS REQUIRE REVIEW.



SECTION
NTS

NOTES:
1.) VERIFY MOUNTING CONDITION.
2.) OWNER SUPPLIED POWER TO BE WITHIN 5'-0" OF AGI TRANSFORMER BOXES.
3.) SEAL ALL WALL PENETRATIONS TO PREVENT WATER INTRUSION AS FOLLOWS:
INSTALL BUSHING AFTER E.I.F.S. APPLICATION HAS HARDENED. DRILL HOLE SLIGHTLY LARGER THAN BUSHING THROUGH INSULATION ONLY. STOP AT PLYWOOD. CAULK OPENING PRIOR TO INSERTING FASTENER TO SEAL PENETRATION.



B TAC-CL-14W-9.2CM-L

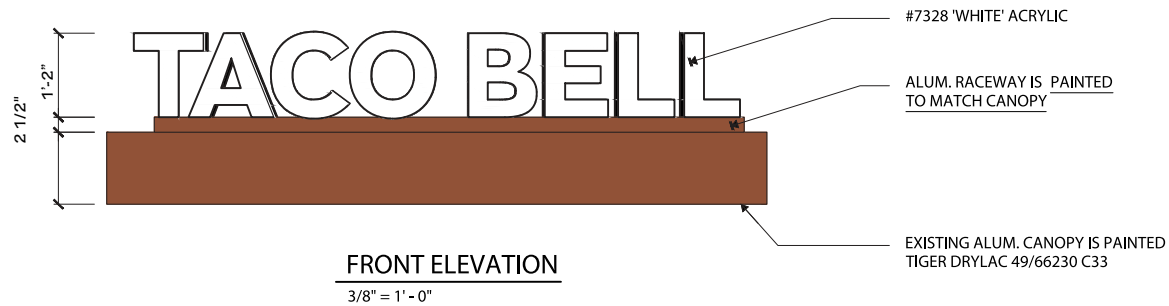
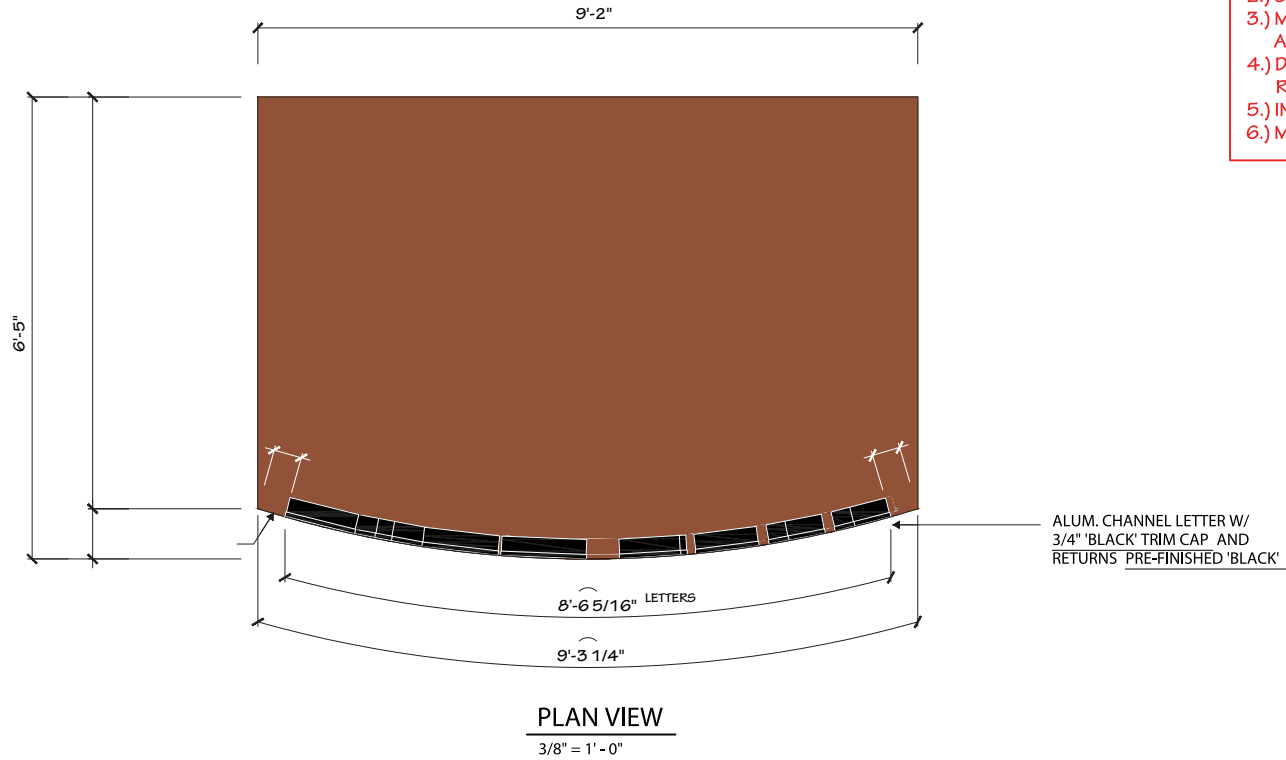
Qty. - 2

NOTES:

1.) SHOP TO PROVIDE TOUCH UP PAINT TO INSTALLER.

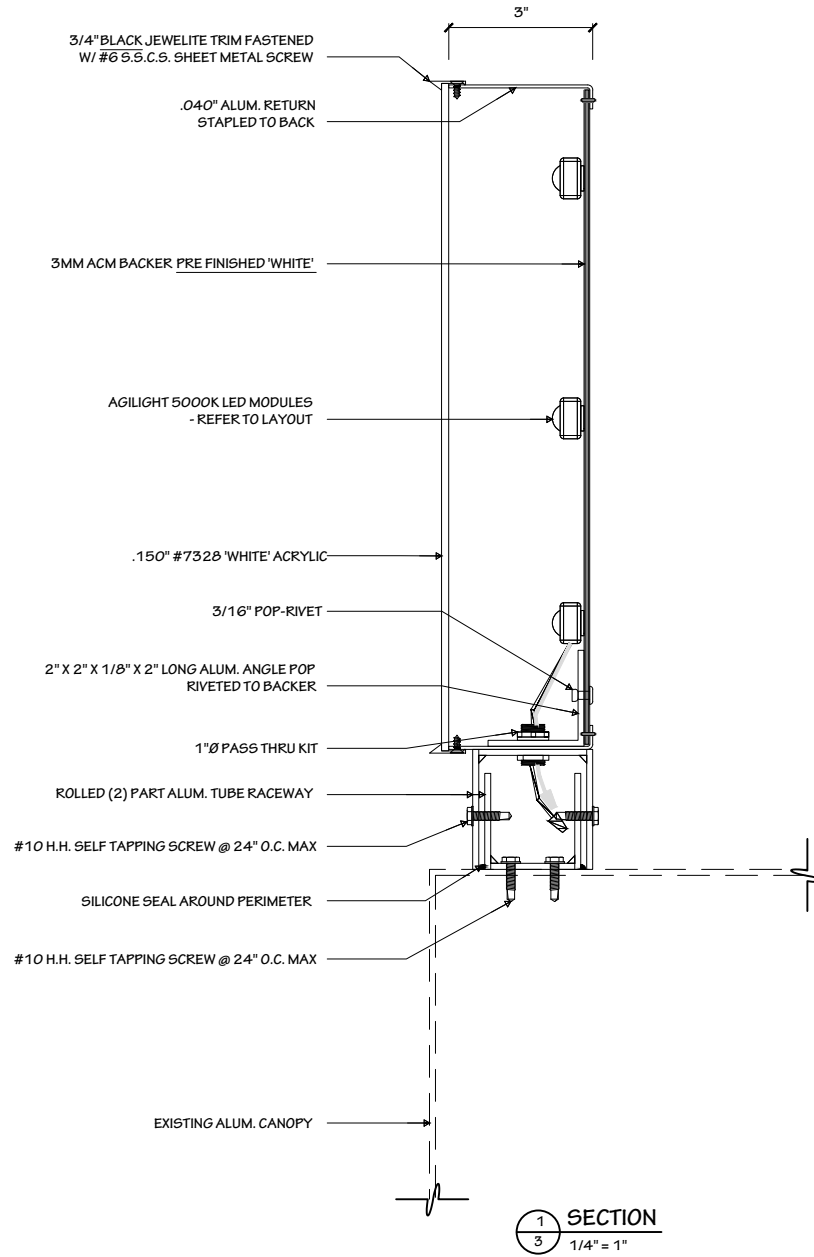
INSTALLATION INSTRUCTIONS:

- 1.) REMOVE EXISTING LETTERS.
- 2.) SEAL EXISTING PENETRATIONS.
- 3.) MOUNT BOTTOM PART OF RACEWAY OVER EXISTING PENETRATIONS. AND SEAL AROUND PERIMETER.
- 4.) DRILL ELECTRICAL PASS THRU AND MOUNTING HOLES FROM RACEWAY INTO CANOPY.
- 5.) INSTALL POWER SUPPLY AND J-BOX INSIDE CANOPY.
- 6.) MOUNT TOP PART OF RACEWAY WITH LETTERS.

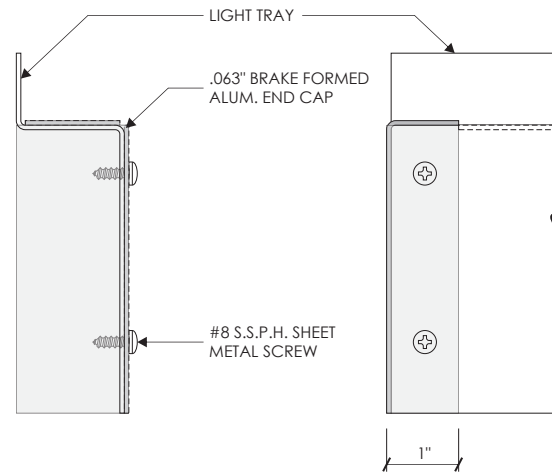
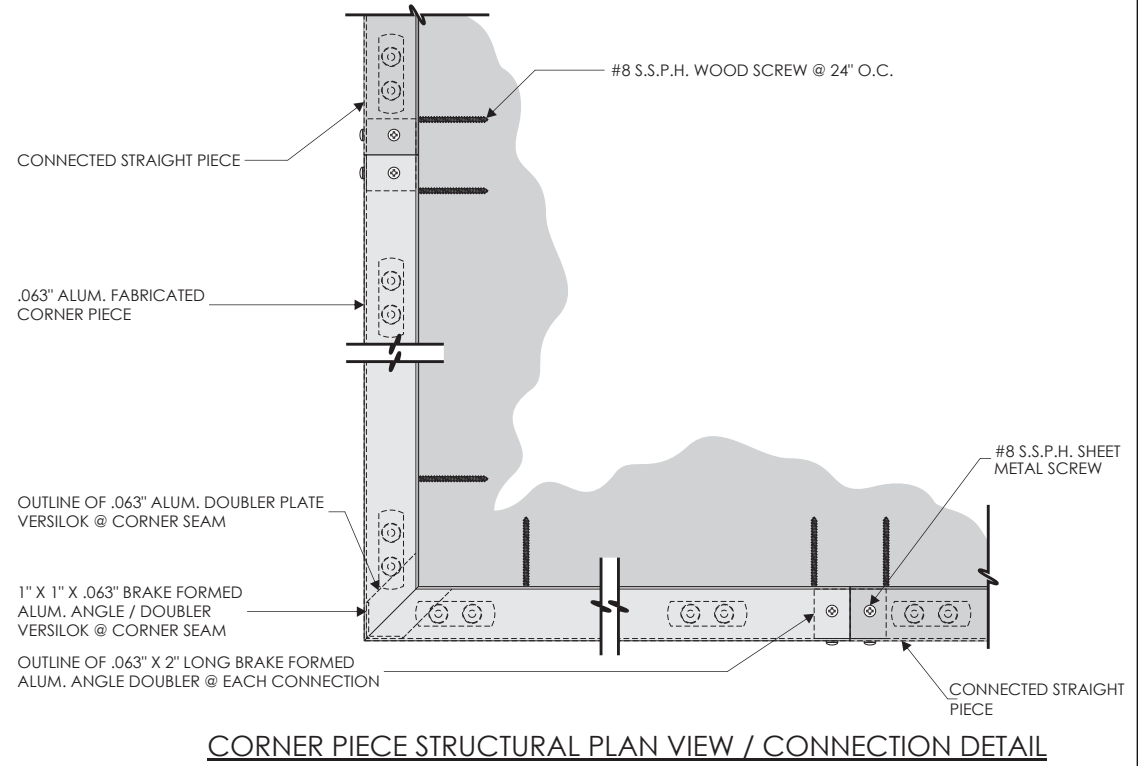
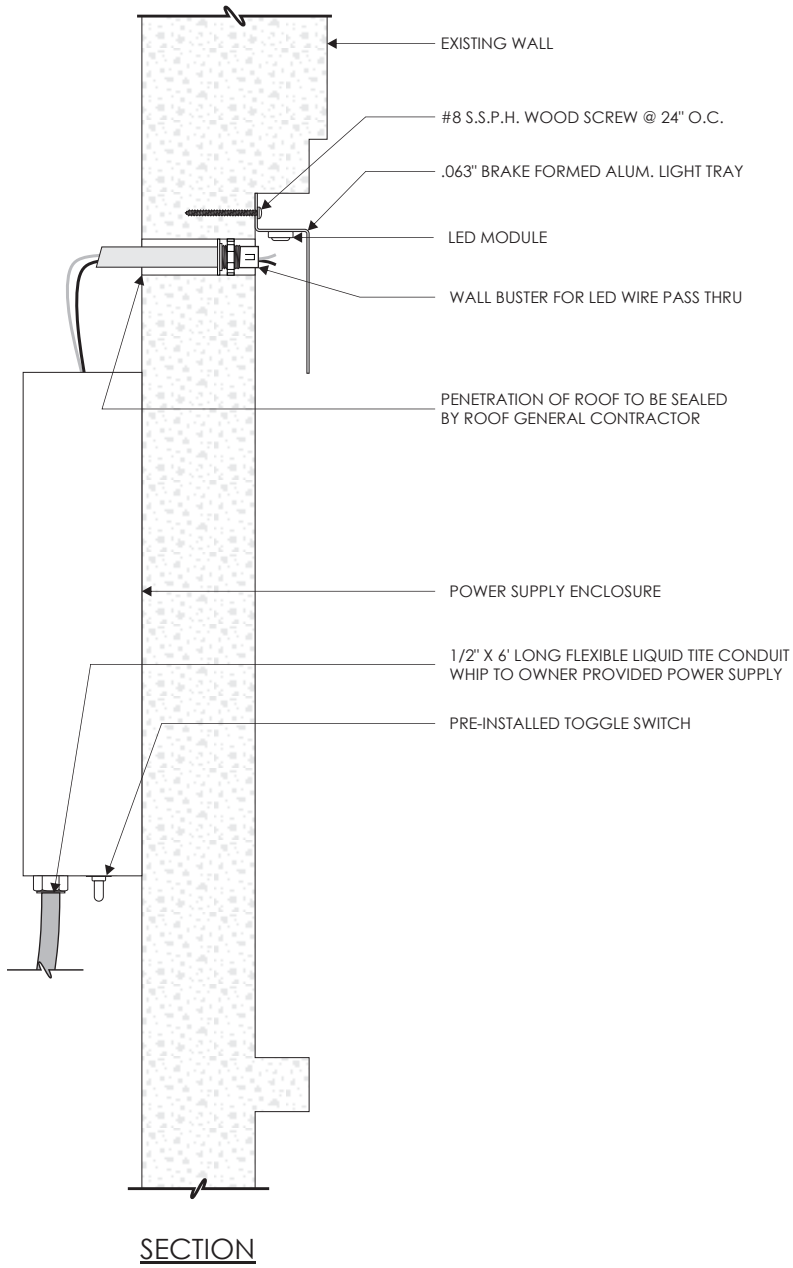


B V-CNP-CHANNEL

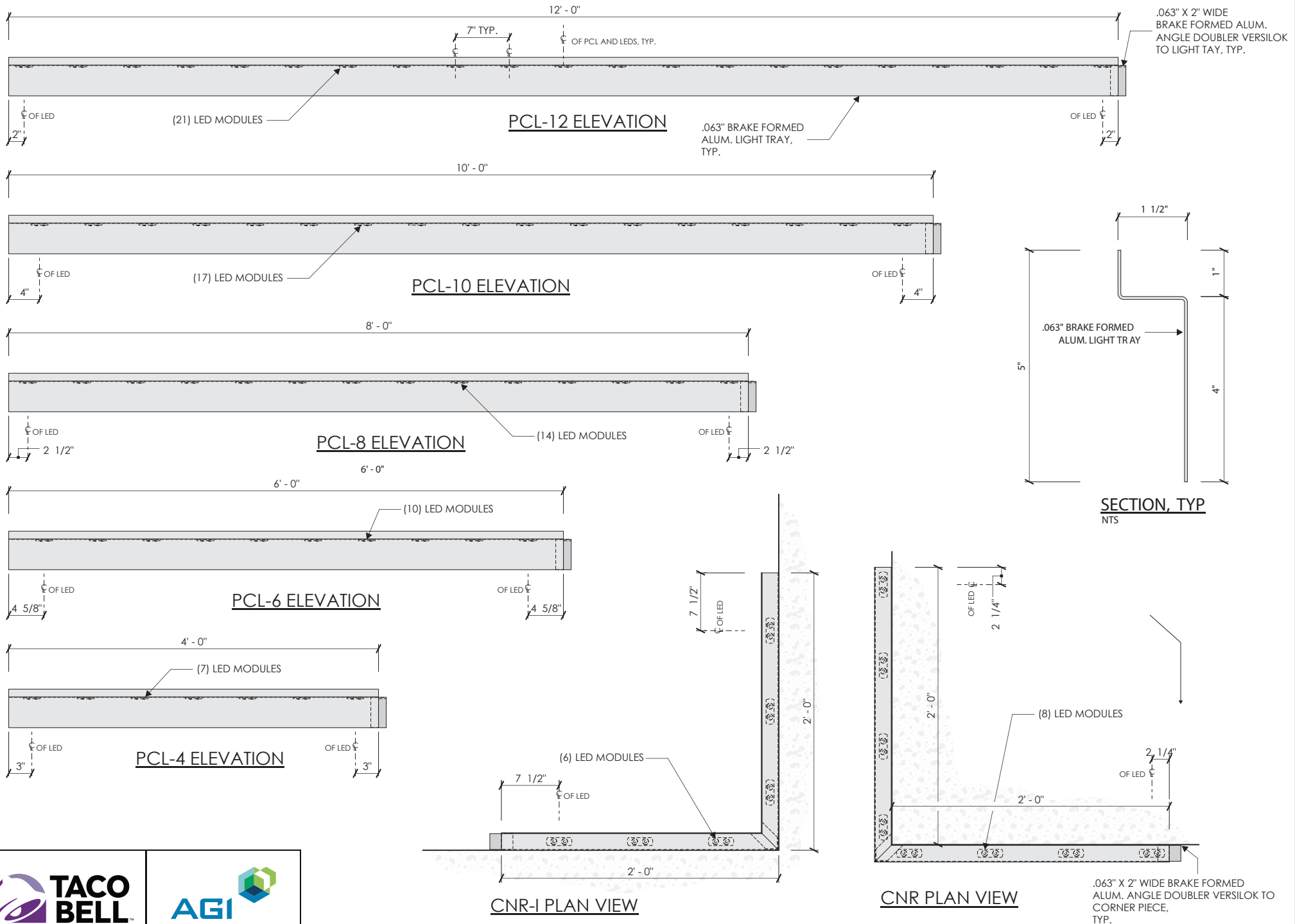
Qty. - 2



C PURPLE LED WALL DOWNLIGHT



C PURPLE LED WALL DOWNLIGHT

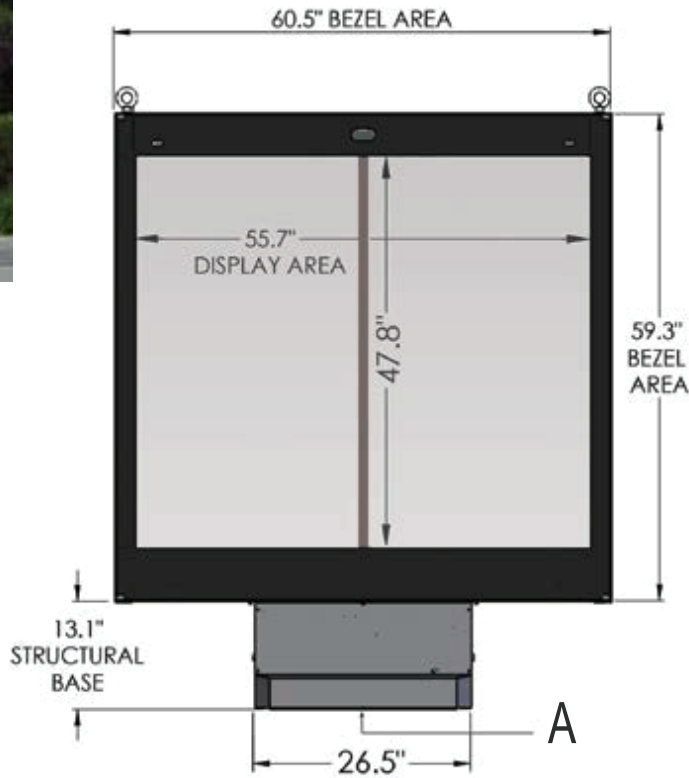


G TAC-DMB-EXT-INSTALL

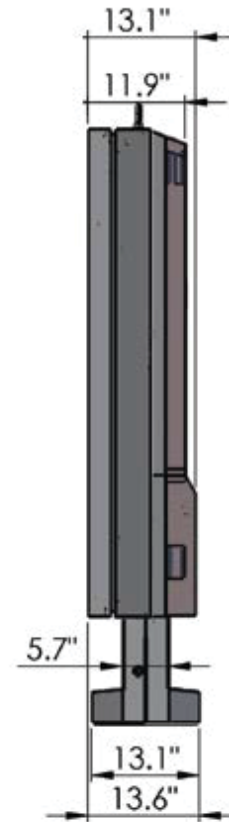
NOTE: DMB Install on existing foundation. Cut existing anchor bolts to grade. Hilti in new Anchor Bolts
Work must be performed when store is closed so Drive Thru is not disrupted.
Non-Standard install hours required.



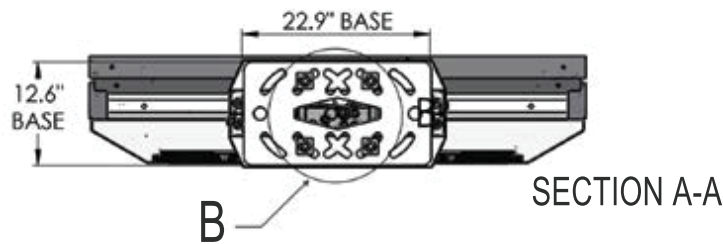
EXISTING



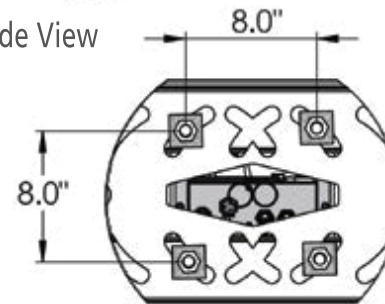
Front View



Side View



SECTION A-A



DETAIL B-B

GENERAL SPECS

- Material: Aluminum exterior with tube steel inner frame. Certified 180 MPH
- Surface Treatment:
 - Pretreatment - zinc primer & polyester powder coating
- Surface Area:
 - Display: 18.5 sq/ft
 - Total surface: 24.9 sq/ft
- Weight:
 - Gross: 915 lbs / Net: 705 lbs

ELECTRICAL SPECS

- Power:
 - Hardwired AC Power
 - 120/240V 50/60Hz
 - 1150 W (@ max load)
 - UL Rated @ 10 Amp
- Backlight:
 - LED Light Source
 - 380 CD/M2 to 3,500 CD/M2
 - Auto adjusting to outdoor ambient light levels



Product Model #: STR-D12-120
Project #:
Date: 2019-12-03



STRATACACHE
 40 N. Main Street
 Dayton, Ohio 45423
 1-800-244-8915

Drawing #: STR-D12 v1.1
Date: 2019-12-03
Author: B. Pupo

H TAC-CUST-KIT-34205



EXISTING



TYPICAL REFURBISH INCLUDES:

- Face Replacement
- Message Panel
- Clad/Retainer/Column
Painted Satin Black if applicable.



PROPOSED

NOTE:
Rendering is for viewing purposes only.
Final dimensions and layout TBD,
pending a survey.

Example of lighting





