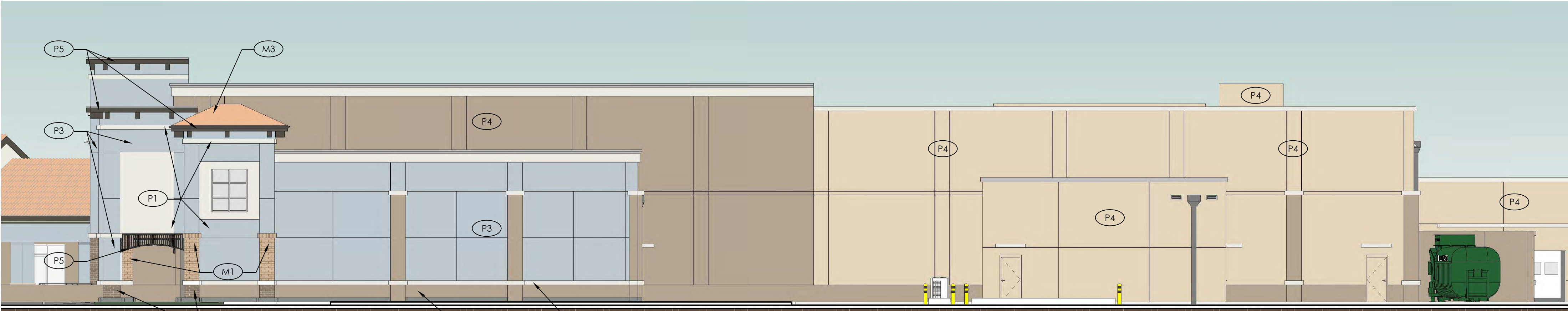


Exhibit C - Proposed Elevations and Materials



NORTH WEST ELEVATION

SCALE: 3/32" = 1'-0"



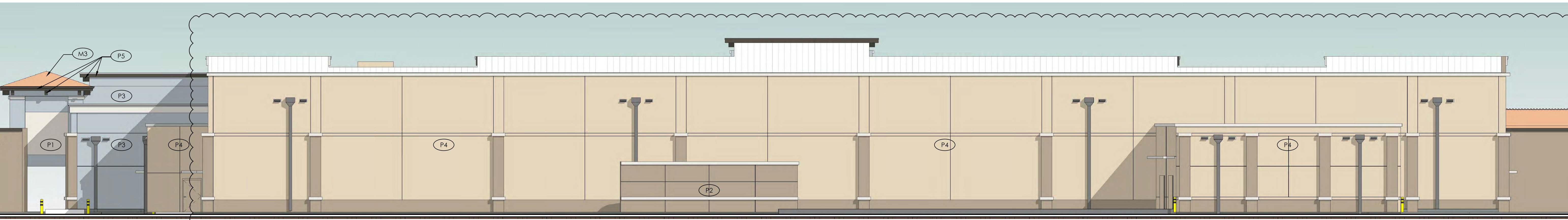
SOUTH WEST ELEVATION

SCALE: 3/32" = 1'-0"



NORTH EAST ELEVATION

SCALE: 3/32" = 1'-0"



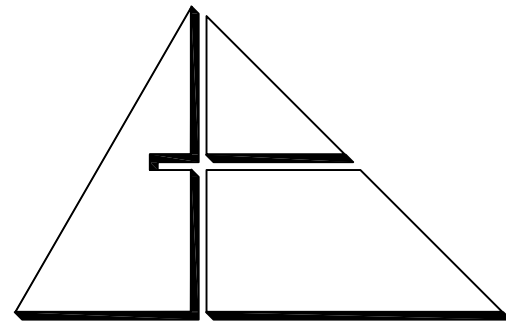
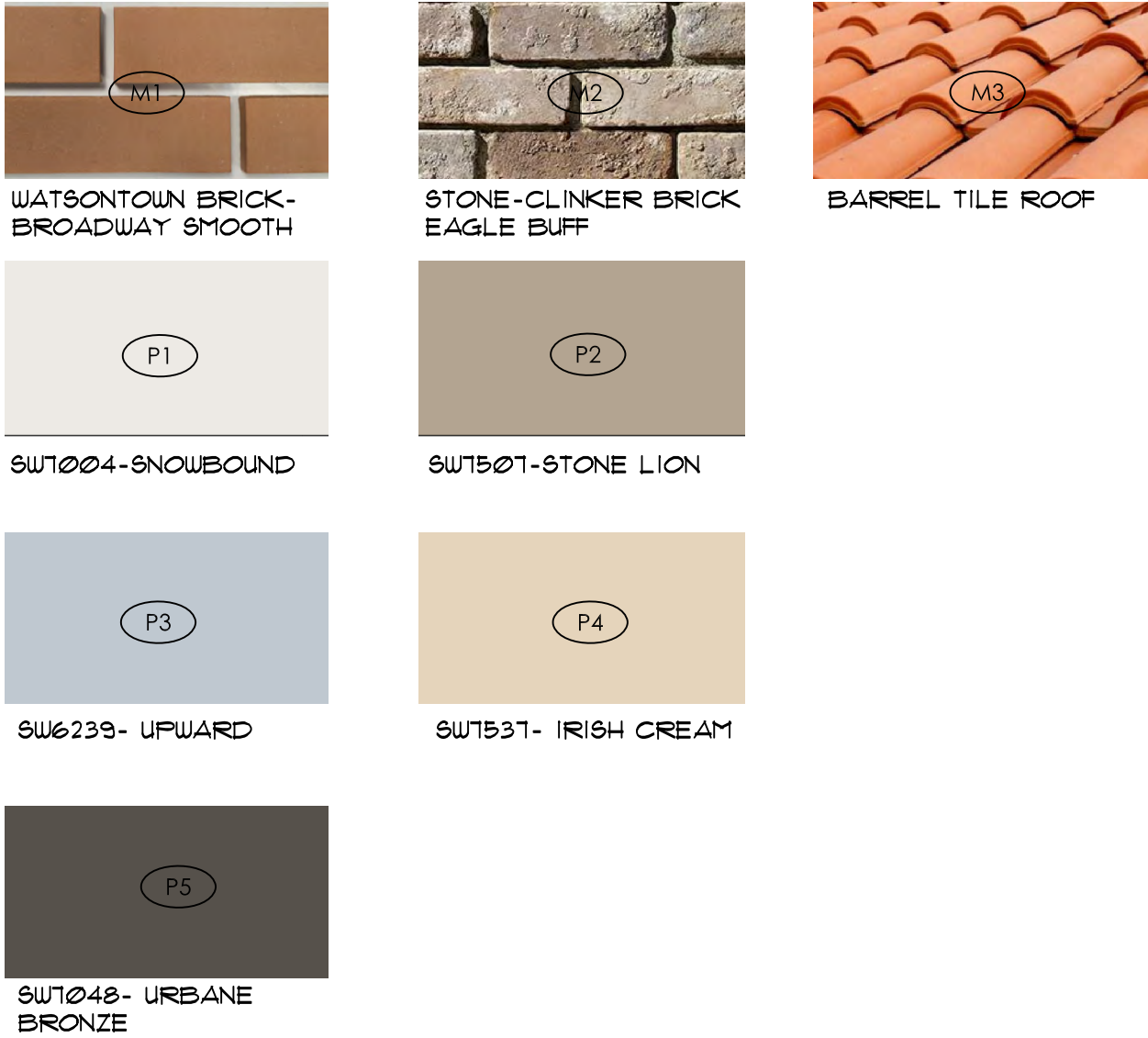
SOUTH EAST ELEVATION

SCALE: 3/32" = 1'-0"

FINISH LEGEND

M1	BRICK (MODULAR SIZE)
M2	CAST STONE - CLINKER BRICK EAGLE BUFF
M3	BARREL TILE ROOF
P1	SHERWIN WILLIAMS ELASTOMETRIC PAINT COLOR #1004
P2	SHERWIN WILLIAMS ELASTOMETRIC PAINT COLOR #1501 STONE LION
P3	SHERWIN WILLIAMS ELASTOMETRIC PAINT COLOR #6239 UPWARD
P4	SHERWIN WILLIAMS ELASTOMETRIC PAINT COLOR #1531 IRISH CREAM
P5	SHERWIN WILLIAMS ELASTOMETRIC PAINT COLOR #1048 URBANE BRONZE

MATERIALS AND COLOR LEGEND



ALLEGUEZ
ARCHITECTURE, INC.

ARCHITECTURE
PLANNING INTERIOR DESIGN &
CONSTRUCTION MANAGEMENT

7294 SW 48TH STREET
MIAMI, FLORIDA 33155
TEL: 305.461.4001 FAX: 305.461.6002
www.alleguezarchitecture.com
AA C 0 0 2 7 4 6

OWNER:
PUBLIX HEADQUARTERS

3300 PUBLIX CORPORATE PARKWAY
LAKELAND, FLORIDA 33811-3311
PHONE: 863.688.7407

DEVELOPER:

SKILKEN GOLD
REAL ESTATE DEVELOPMENT

4270 MORSE ROAD
COLUMBUS, OHIO 43230
PHONE: 614.375.0162

CONSULTANTS:

CIVIL ENGINEER AND LANDSCAPE ARCHITECT

CONSULTING ENGINEERING
& SCIENCE, A GRAEF COMPANY

9400 SOUTH DADELAND BLVD, SUITE 601
MIAMI, FLORIDA 33156
PHONE: 305.376.5555 FAX: 305.279.4553

STRUCTURAL ENGINEER:

BLISS AND NYITRAY, INC.

800 DOUGLAS ROAD, SUITE 300
CORAL GABLES, FLORIDA 33134
PHONE: 305.442.7086 FAX: 305.442.7092

ELECTRICAL ENGINEER:

APOLLO ENGINEERING, LLC.

CA-28878
6544 U.S. HWY 41 NORTH, #209B
APOLLO BEACH, FLORIDA 33572
PHONE: 813.938.5803

MECHANICAL ENGINEER:

G & P ENGINEERING, LLC.

PO BOX 196725
WINTER SPRINGS, FLORIDA 32719
PHONE: 407.476.3031 MOBILE: 561.601.2232

PROJECT:

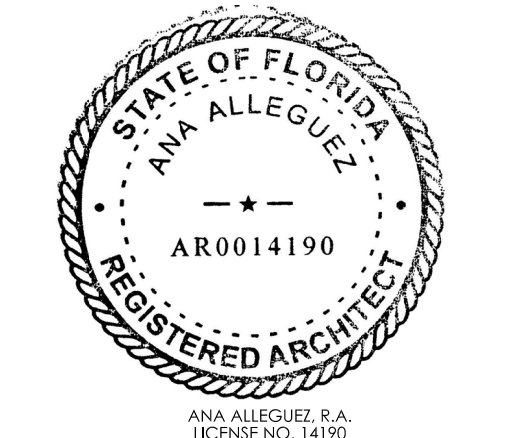
COURTYARD SHOPS
AT
WELLINGTON
PUBLIX
SUPER MARKET
STORE NO. 0394

13880 WELLINGTON TRACE,
WELLINGTON, FLORIDA 33414
CORPORATE OFFICES, FACILITIES DESIGN
3300 PUBLIX CORPORATE PARKWAY,
LAKELAND, FLORIDA 33811-3311
CONTACT PERSON: MR. JOHN SIRERA
(863) 688-7407 EXT "53848"

DRAWING TITLE:

RENDERED
EXTERIOR ELEVATIONS
PUBLIX

SEAL



DATE: MARCH 14TH, 2022
ARB SUBMITTAL

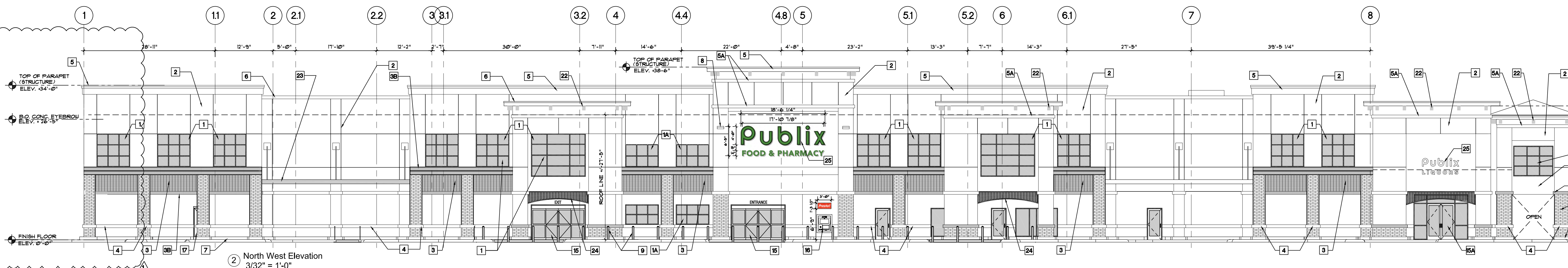
REVISED:
03 21 2022 PLAN UPDATE

CAD DRAWING NAME:
12300a210.dwg

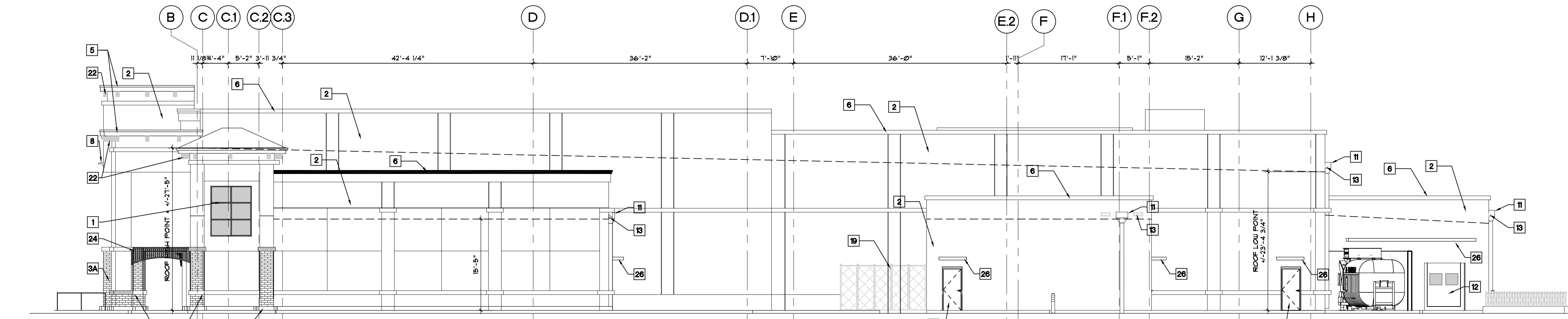
SHEET NO.

ARB SET

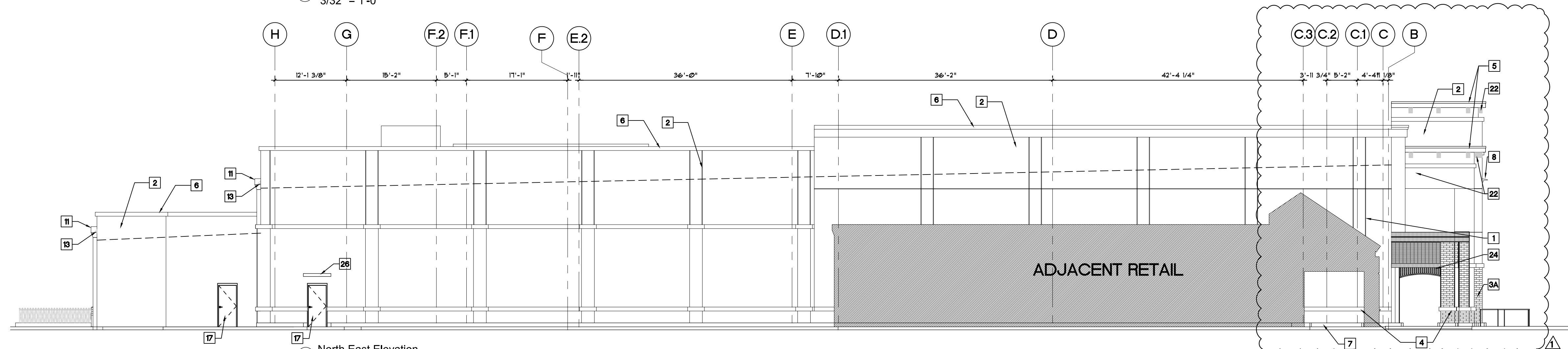
A210



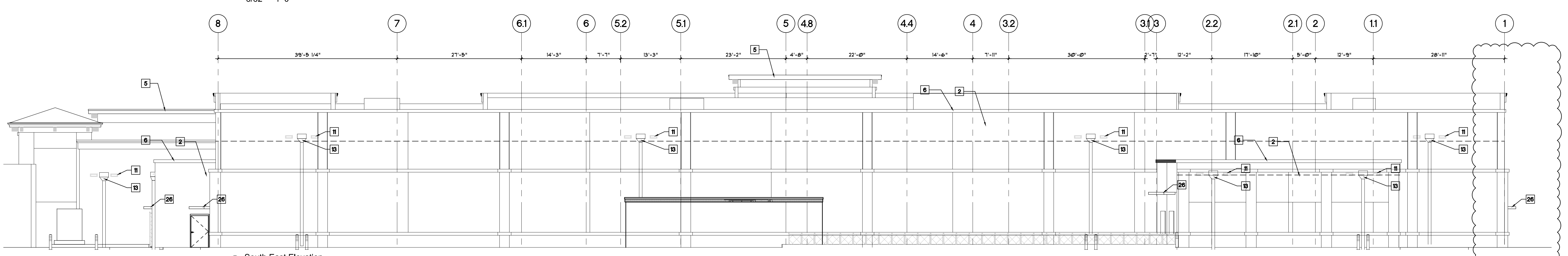
2 North West Elevation
3/32" = 1'-0"



1 South West Elevation
3/32" = 1'-0"



3 North East Elevation
3/32" = 1'-0"

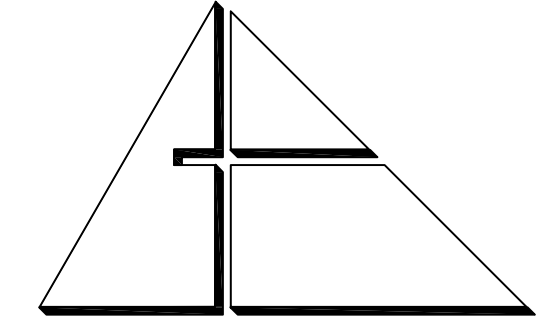


4 South East Elevation
3/32" = 1'-0"

PUBLIX FACADE KEY NOTES

- | | |
|---|---|
| 1 IMPACT RESISTANT STOREFRONT SPANDREL GLAZING | 12 INSULATED COILING DOOR |
| 1A IMPACT RESISTANT STOREFRONT CLEAR GLAZING | 13 OVERFLOW EMERGENCY SCUPPER |
| 2 PAINTED SMOOTH STUCCO FINISH WITH 1/2" REVEALS | 15 IMPACT AUTOMATIC SLIDING ENTRY DOORS WITH CLEAR ANODIZED FINISH |
| 3 STACK BOND BRICK PATTERN | 15A IMPACT STOREFRONT ENTRY DOORS WITH CLEAR ANODIZED FINISH |
| 3A RUNNING BOND BRICK PATTERN | 16 ATM AND PRESTO SIGN |
| 3B SOLIDER COURSE BRICK | 17 IMPACTED RESISTANT HOLLOW METAL DOOR (PAINTED SAME COLOR AS ADJACENT WALL) |
| 4 PRE-CAST CONCRETE TRIM | 18 CONCRETE FILLED GALV. STEEL BOLLARD (PRIMED AND PAINTED), SEE DETAIL |
| 5 E.I.F.S. SYSTEM CROWN TYPE "I" | 19 GENERATOR SERVICE YARD SWING GATE |
| 5A E.I.F.S. WALL TRIM | 20 DASHED LINE REPRESENT ROOFTOP HVAC EQUIPMENT BEYOND |
| 6 STAINLESS STEEL COPING | 22 PRE-FINISHED ALUMINUM BRACKET TYPE "I" |
| 7 CONTINUOUS CONCRETE CURB WITH SMOOTH SURFACE (APPLY 2 COATS OF CLEAR SEALER) | 23 PRE-FINISHED, PRE-ENGINEERED SUSPENDED ALUMINUM CANOPY SYSTEM |
| 8 WALL MOUNTED LIGHTS, REF. ELECTRICAL DRAWINGS | 24 PRE-FINISHED ALUMINUM PICKET PANEL |
| 9 STAINLESS STEEL BOLLARD WITH ROUND TOP, SEE DETAIL | 25 PUBLIX ILLUMINATED SIGN |
| 11 STAINLESS STEEL SCUPPER, COLLECTION BOX AND DOWNSPOUT CONNECTED TO UNDERGROUND DRAINAGE SYSTEM | 26 CANTILEVERED EYEBROW |

- NOTE(S):
1. ALL KEY NOTES SHOWN ARE TYPICAL UNLESS OTHERWISE NOTED.
 2. ALL REVEAL INTERSECTIONS AND ABUTTING LAPS SHALL BE COMPLETELY SET IN SEALANT.
 3. PROVIDE EXPANSION JOINTS AT STONE TRIMS TO ALIGN WITH MASONRY EXPANSION JOINTS.
 4. ALL NATURAL CORAL STONES SHALL RECEIVE TWO (2) COATS OF "SIKAGARD CLEAR SEALER" OR APPROVED EQUIVALENT.
 5. STOP STUCCO CONTROL JOINTS AND STONE TRIMS 1/2" FROM WINDOWS, STOREFRONTS, DOWNSPOUTS AND LOUVERS.
 6. CONTRACTOR SHALL PROVIDE 4' X 4' MOCK-UP FOR EACH FINISH. MOCK-UP SHALL BE APPROVED BY OWNER AND ARCHITECT.
 7. CONTRACTOR SHALL PROVIDE 4' X 4' PAINT MOCK-UP FOR EACH COLOR. PAINT COLOR SHALL BE APPROVED BY THE OWNER AND ARCHITECT.



ALLEGUEZ ARCHITECTURE, INC.

ARCHITECTURE
PLANNING INTERIOR DESIGN &
CONSTRUCTION MANAGEMENT

7294 SW 48TH STREET
MIAMI, FLORIDA 33155
tel: 305.461.4001 fax: 305.461.6002
www.alleguezarchitecture.com
AA C 0 0 2 7 4 6

OWNER:
PUBLIX HEADQUARTERS
3300 PUBLIX CORPORATE PARKWAY
LAKELAND, FLORIDA 33811-3311
PHONE: 863.688.7407

SKILKEN GOLD REAL ESTATE DEVELOPMENT
4270 MORSE ROAD
COLUMBUS, OHIO 43230
PHONE: 614.375.0162

CONSULTANTS:
CIVIL ENGINEER AND LANDSCAPE ARCHITECT
CONSULTING ENGINEERING & SCIENCE, A GRAEF COMPANY
9400 SOUTH DADELAND BLVD, SUITE 601
MIAMI, FLORIDA 33156
PHONE: 305.378.5555 FAX 305.279.4553

BLISS AND NYTRAY, INC.
800 DOUGLAS ROAD, SUITE 300
CORAL GABLES, FLORIDA 33134
PHONE: 305.442.7086 FAX 305.442.7092

APOLLO ENGINEERING, LLC.
CA-28878
6544 U.S. HWY 41 NORTH, #209B
APOLLO BEACH, FLORIDA 33572
PHONE: 813.938.5803

G & P ENGINEERING, LLC.
FIRE PROTECTION ENGINEER
WINTER SPRINGS, FLORIDA 32719
PHONE: 407.476.3031 MOBILE: 561.601.2832

PROJECT:
COURTYARD SHOPS AT WELLINGTON PUBLIX SUPER MARKET STORE NO. 0394

13880 WELLINGTON TRACE,
WELLINGTON, FLORIDA 33414
CORPORATE OFFICES, FACILITIES DESIGN
3300 PUBLIX CORPORATE PARKWAY,
LAKELAND, FLORIDA 33811-3311
CONTACT PERSON: MR. JOHN SIREA
(863) 688-7407 EXT "53848"

DRAWING TITLE:

Technical Elevation

SEAL



DATE: MARCH 14TH, 2022
ARB SUBMITTAL

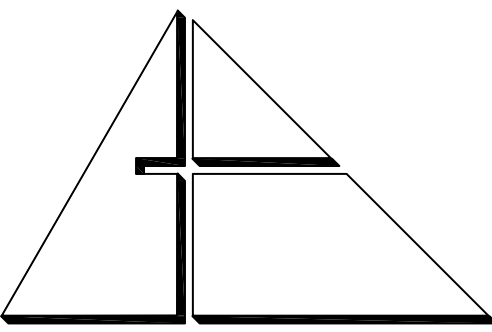
REVISED: 03 21 2022 PLAN UPDATE

CAD DRAWING NAME:

SHEET NO.

A200

ARB SET



A L L E G U E Z
ARCHITECTURE, INC.

ARCHITECTURE
PLANNING INTERIOR DESIGN &
CONSTRUCTION MANAGEMENT

7294 SW 48TH STREET
M I A M I, F L O R I D A 33155
tel: 305.461.4001 fax: 305.461.6002
www.alleguezarchitecture.com
■ A A C 0 0 2 7 4 6 ■

OWNER:
PUBLIX HEADQUARTERS
3300 PUBLIX CORPORATE PARKWAY
LAKELAND, FLORIDA 33811-3311
PHONE: 863.688.7407

DEVELOPER:
SKILKEN GOLD
REAL ESTATE DEVELOPMENT
4270 MORSE ROAD
COLUMBUS, OHIO 43230
PHONE: 614.375.0162

CONSULTANTS:
CIVIL ENGINEER AND LANDSCAPE ARCHITECT
CONSULTING ENGINEERING
& SCIENCE, A GRAEF COMPANY
9400 SOUTH DADELAND BLVD, SUITE 601
MIAMI, FLORIDA 33156
PHONE: 305.378.5555 FAX: 305.279.4553

STRUCTURAL ENGINEER:
BLISS AND NYITRAY, INC.
800 DOUGLAS ROAD, SUITE 300
CORAL GABLES, FLORIDA 33134
PHONE: 305.442.7086 FAX: 305.442.7092

ELECTRICAL ENGINEER:
APOLLO ENGINEERING, LLC.
CA-28878
6544 U.S. HWY 41 NORTH, #209B
APOLLO BEACH, FLORIDA 33572
PHONE: 813.938.5803
NEW PROTECTION ENGINEER

G & P ENGINEERING, LLC.
P.O. BOX 196725
WINTER SPRINGS, FLORIDA 32719
PHONE: 407.476.3031 MOBILE: 561.601.2232

PROJECT:

COURTYARD SHOPS
AT
WELLINGTON
PUBLIX
SUPER MARKET
STORE NO. 0394

13880 WELLINGTON TRACE,
WELLINGTON, FLORIDA 33414
CORPORATE OFFICES, FACILITIES DESIGN
3300 PUBLIX CORPORATE PARKWAY,
LAKELAND, FLORIDA 33811-3311
CONTACT PERSON: MR. JOHN SIRERA
(863) 688-7407 EXT "53848"

DRAWING TITLE:

RENDERED
EXTERIOR ELEVATIONS
RETAIL

SCALE:



DATE:

MARCH 14TH, 2022
ARB SUBMITTAL

REVISED:

03 21 2022 PLAN UPDATE

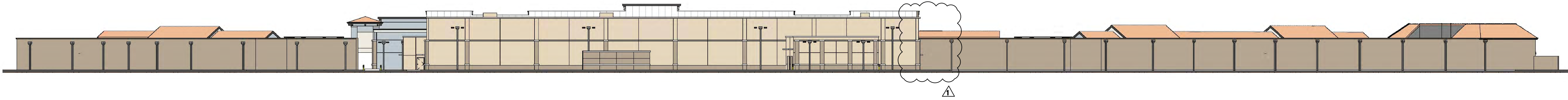
CAD DRAWING NAME:

12300a211.dwg

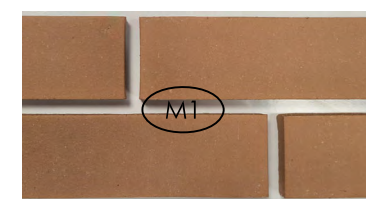
SHEET NO.

ARB SET

A211



MATERIALS AND COLOR LEGEND



WATERTOWN BRICK -
BROADWAY SMOOTH



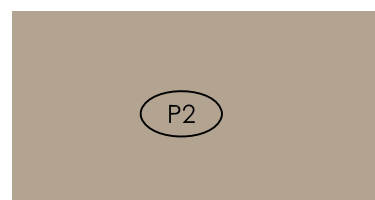
STONE - CLINKER BRICK
EAGLE BUFF



BARREL TILE ROOF



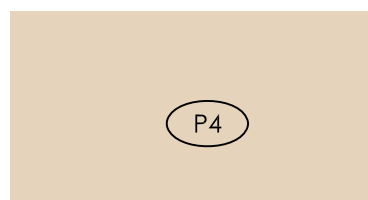
SW7004- SNOWBOUND



SW7501- STONE LION



SW6239- UPWARD



SW7531- IRISH CREAM



SW7048- URBANE
BRONZE