

LEGEND	
Elevation (N/E/S/W)	S1
Elevation (N/E/S/W)	S2
Ground Sign Type	P1



Site Plan - Overview

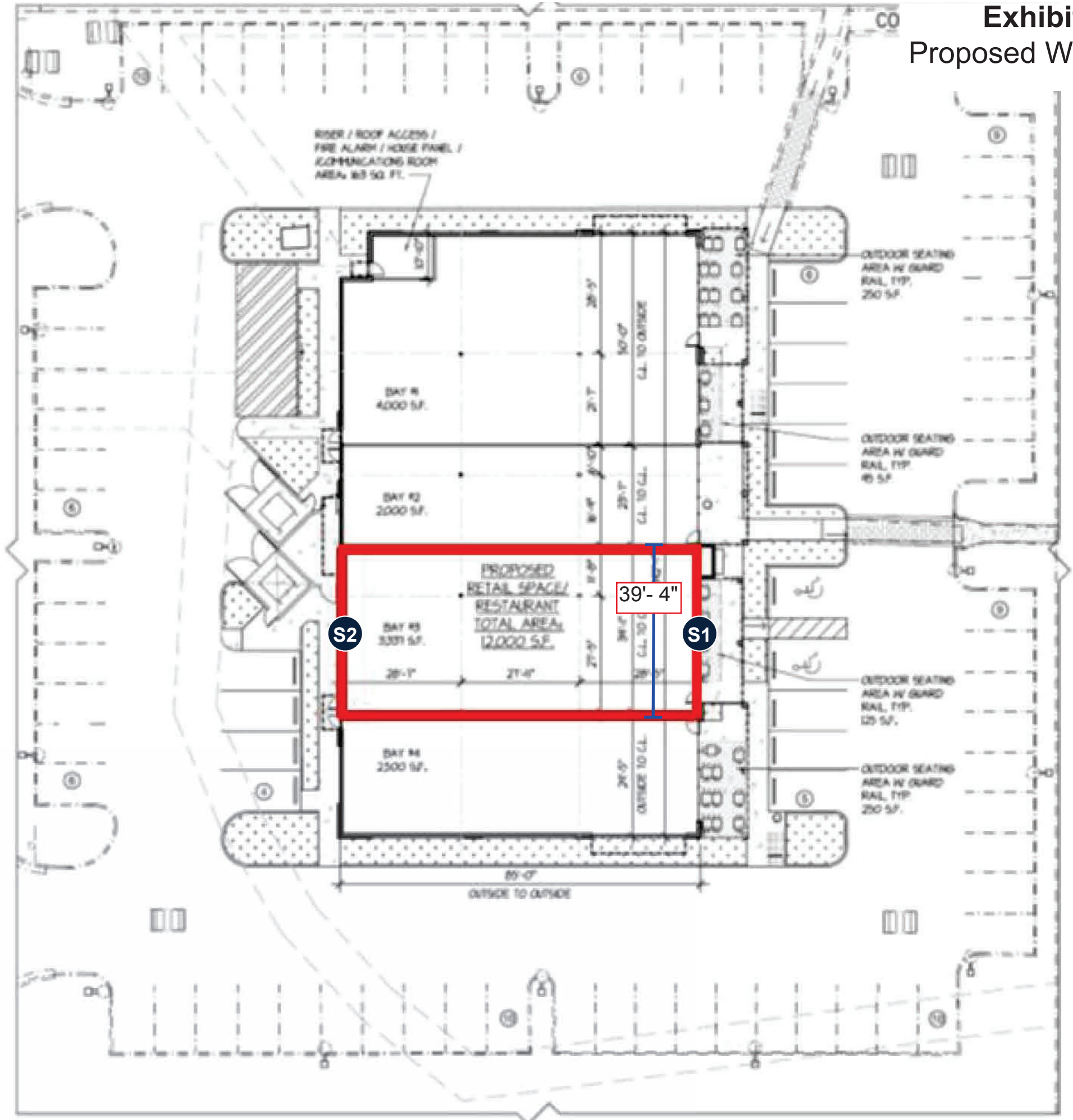
Project No.	202827
Project	Signage Package
Location	2535 South State Road 7 - US441 Wellington, FL 33414
Orig. Draft	11.05.20
Project Mgr.	Jim Zook
Designer	Liz Morgan
Rev. Art	N/A
Rev. Date	00.00.00
Page Rev.	000
Rev. Details	N/A

This sign design is exclusive property of Identiti Resources, LTD., and is the result of the original and creative work of it's employees. This drawing is submitted to the customer for the sole purpose of purchase of the design or signage manufactured to this design, by Identiti Resources, LTD. Distribution to or use of this sign design by anyone outside of the customer's organization, without expressed, written authorization by Identiti Resources, LTD. is prohibited.



425 N Martingale Rd
18th Floor
Schaumburg, IL 60173
Office 847.301.0510
identiti.net

Exhibit A
Proposed Wall Signs



Front (East) Store Elevation

S1-1

Proposed Signage = 36.7 SF
Relevant Signage Code

Municipality: 2 SF per principal facade length NTE 150SF
Principal wall sign NTE 30” in height & 80% facade length; NTE 50% of sign area
39’ x 2 = NTE 78.0 SF
39’ x 80% = NTE 31.2’ wide
29.3’ x 7.5’ x 50% = NTE 109.9 SF

MSP: NTE 32 SF

Sign Type

LED Channel Letters, Front-Lit
on Backer

Mounting

Flush Mounted

Color Palette

- Face: White
- Vinyl: Oracal 591 Translucent Blue
- Trim Cap, Return, & Backer: MP 14112 Blue
- N/A
- N/A

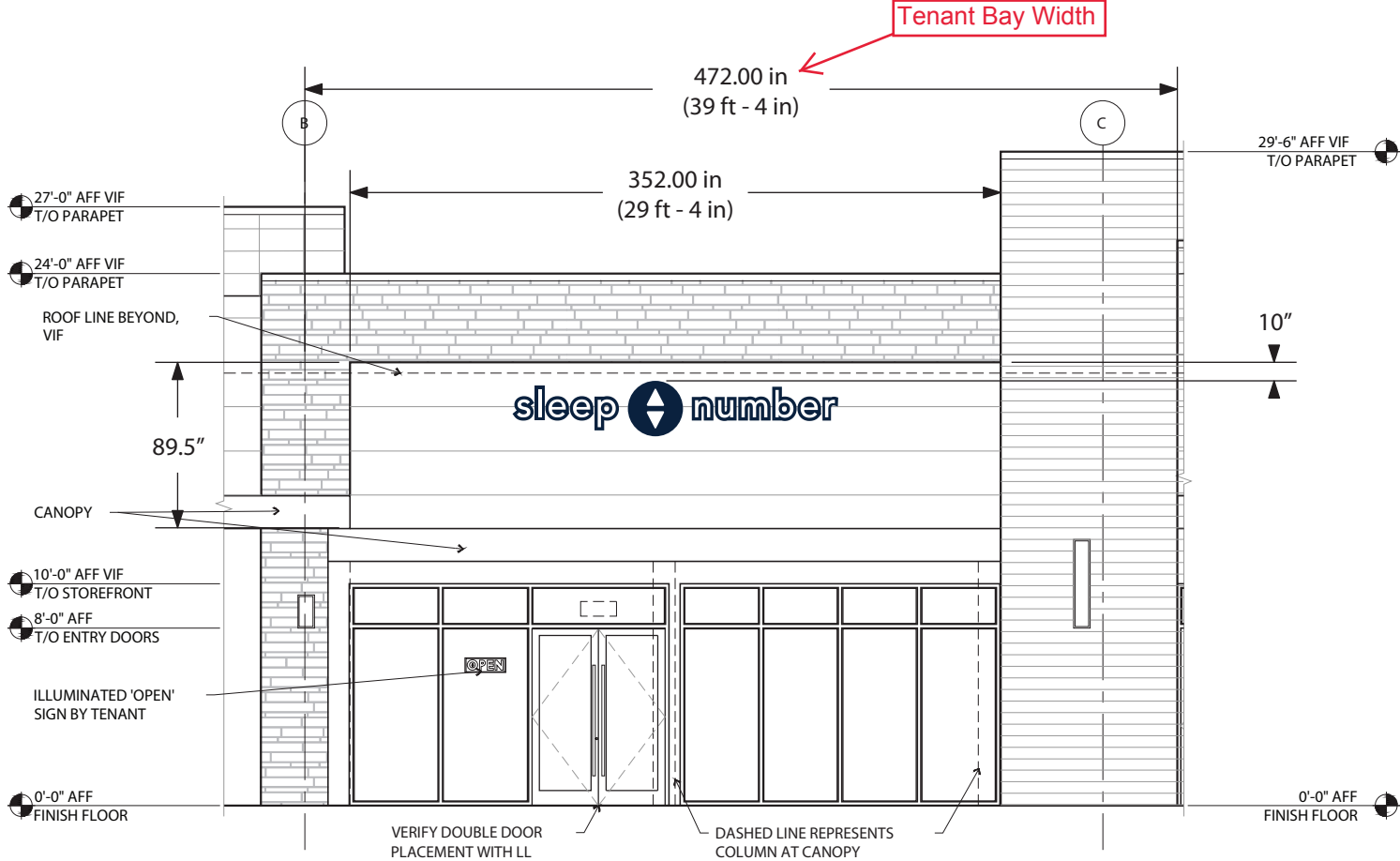
Project No. 202827
Project Signage Package
Location 2535 South State Road 7 - US441
Wellington, FL 33414

Orig. Draft 11.05.20
Project Mgr. Jim Zook
Designer Liz Morgan
Rev. Art Stephanie Chan
Rev. Date 04.26.2021
Page Rev. 002
Rev. Details Revised arch drawings

This sign design is exclusive property of Identiti Resources, LTD., and is the result of the original and creative work of it's employees. This drawing is submitted to the customer for the sole purpose of purchase of the design or signage manufactured to this design, by Identiti Resources, LTD. Distribution to or use of this sign design by anyone outside of the customer's organization, without expressed, written authorization by Identiti Resources, LTD. is prohibited.

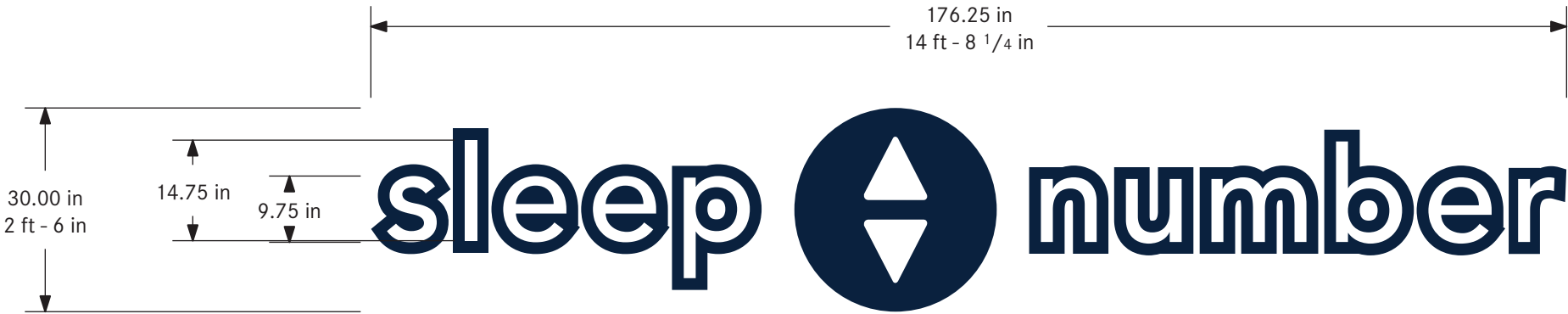
IDENTITI

425 N Martingale Rd
18th Floor
Schaumburg, IL 60173
Office 847.301.0510
identiti.net



Signs shall operate by a 24 hour timeclock that turns the signs on at dusk and a timer that turns them off at 11PM

FIELD VERIFICATION REQUIRED



Rear (West) Store Elevation

S2-1

Proposed Signage = 36.7 SF
Relevant Signage Code

Municipality: 2 SF per principal facade length NTE 150SF
Principal wall sign NTE 30" in height & 80% facade length; NTE 50% of sign area
39' x 2 = NTE 78.0 SF
39' x 80% = NTE 31.2' wide
29.3' x 7.5' x 50% = NTE 109.9 SF

MSP: NTE 32 SF

Sign Type

LED Channel Letters, Front-Lit
on Backer

Mounting

Flush Mounted

Color Palette

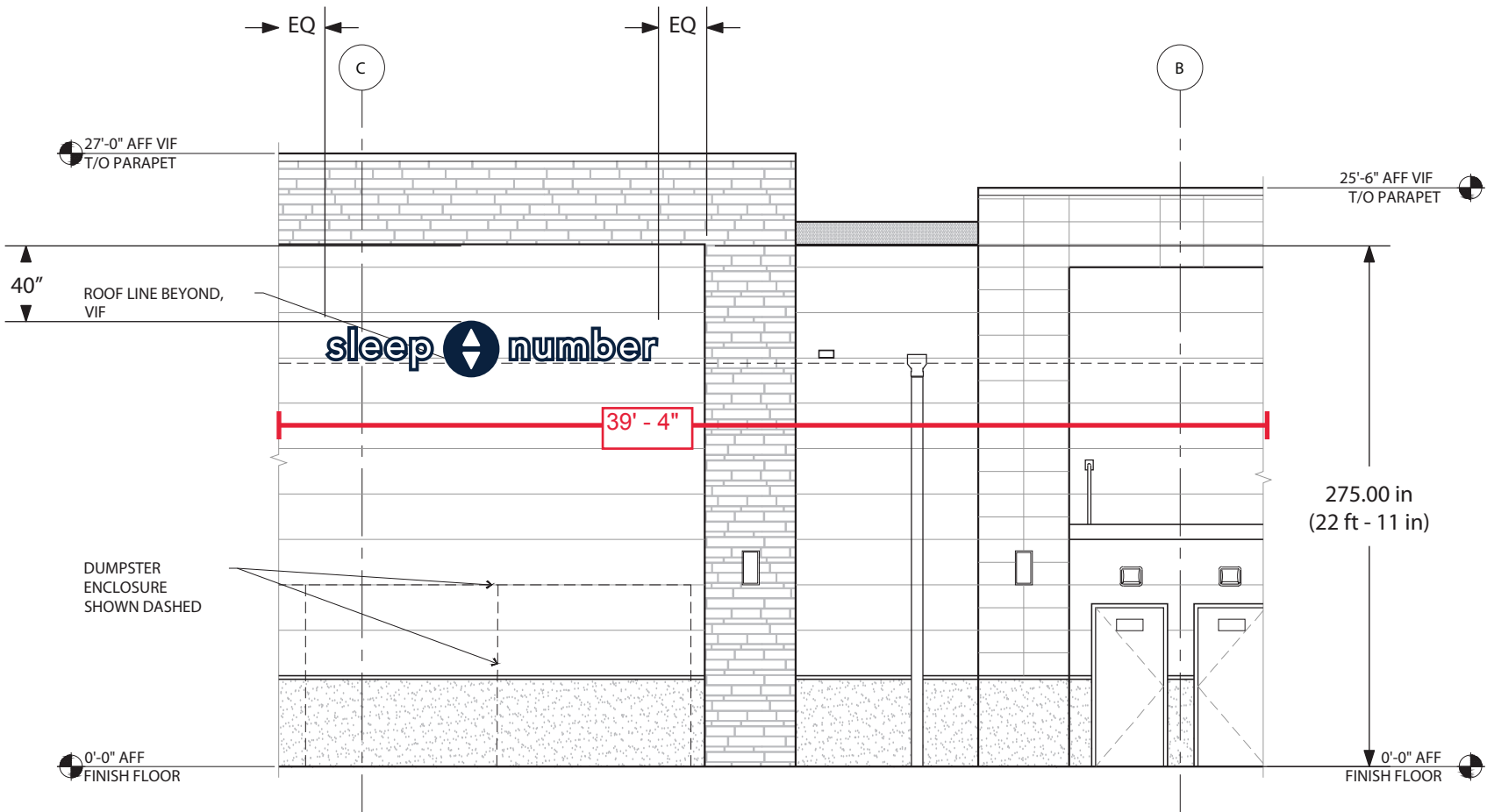
- Face: White
- Vinyl: Oracal 591 Translucent Blue
- Trim Cap, Return, & Backer: MP 14112 Blue
- N/A
- N/A

Project No.	202827
Project	Signage Package
Location	2535 South State Road 7 - US441 Wellington, FL 33414
Orig. Draft	11.05.20
Project Mgr.	Jim Zook
Designer	Liz Morgan
Rev. Art	Stephanie Chan
Rev. Date	04.26.2021
Page Rev.	002
Rev. Details	Revised arch drawing and added note

This sign design is exclusive property of Identiti Resources, LTD., and is the result of the original and creative work of it's employees. This drawing is submitted to the customer for the sole purpose of purchase of the design or signage manufactured to this design, by Identiti Resources, LTD. Distribution to or use of this sign design by anyone outside of the customer's organization, without expressed, written authorization by Identiti Resources, LTD. is prohibited.

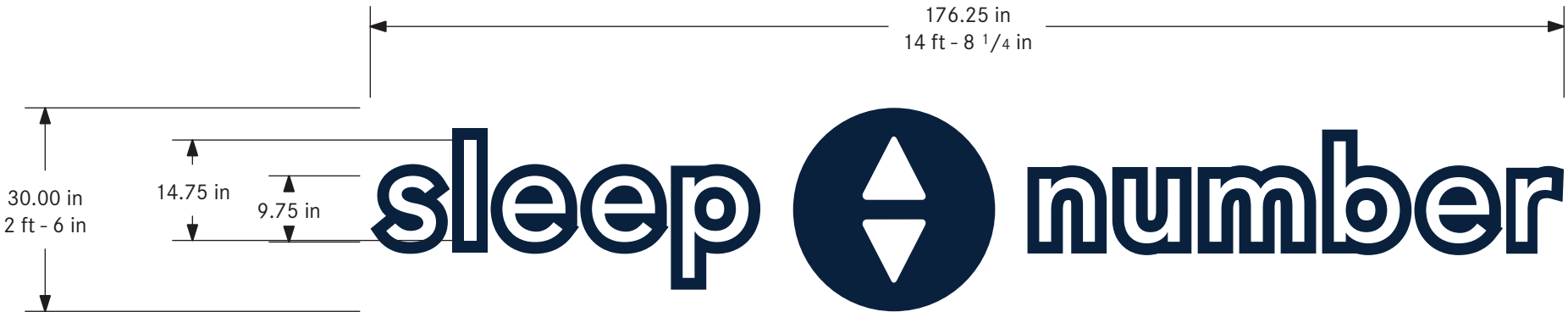


425 N Martingale Rd
18th Floor
Schaumburg, IL 60173
Office 847.301.0510
identiti.net



Signs shall operate by a 24 hour timeclock that turns the signs on at dusk and a timer that turns them off at 11PM
Electrical Power to roof by others - Must be located within 5' of sign for connection.

FIELD VERIFICATION REQUIRED



SPEC

Proposed Signage = N/A

Sign Type
LED Channel Letters, Front-Lit
on Backer

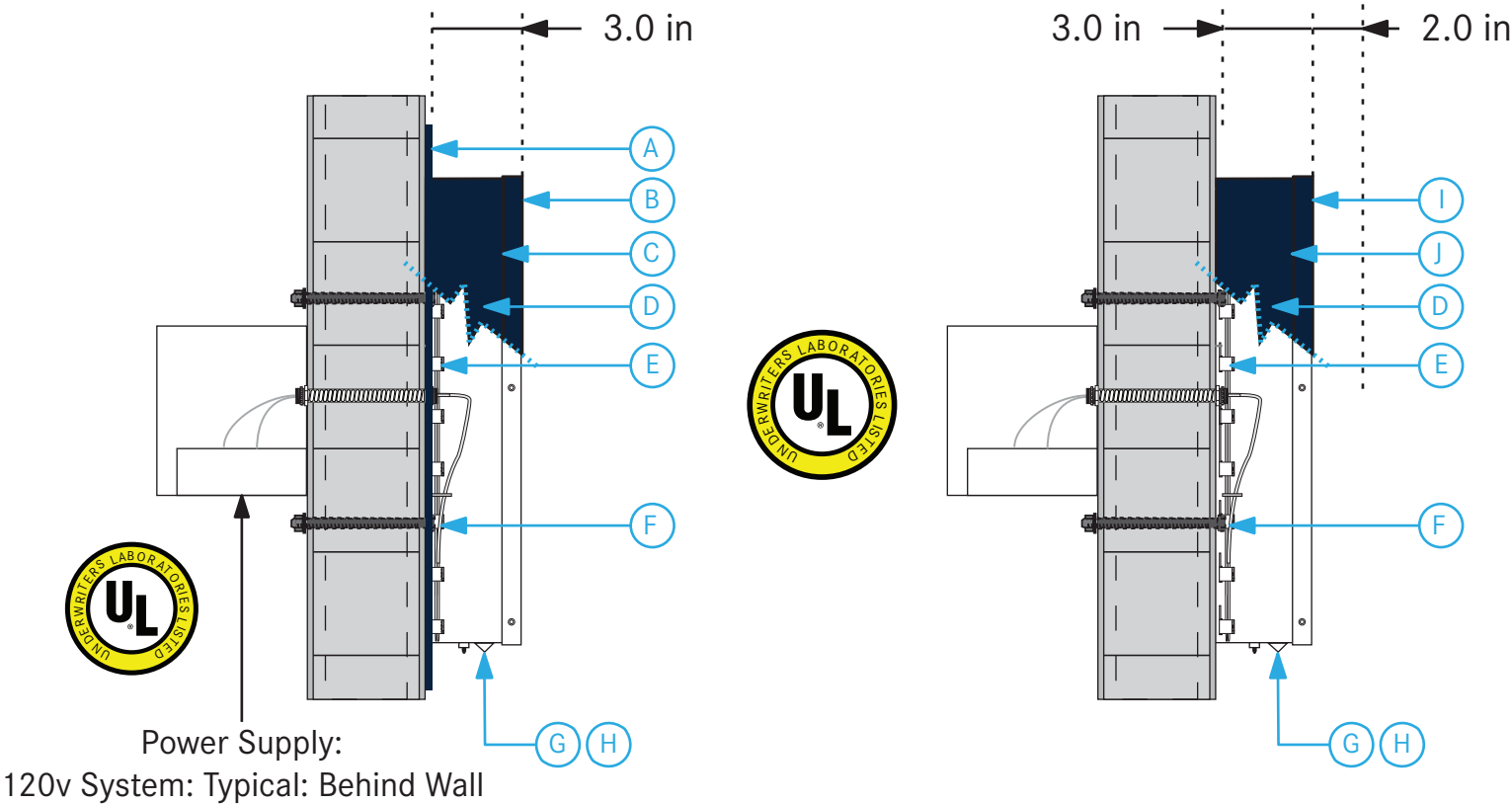
Mounting
Flush Mounted

- Color Palette**
- Face: White
 - Vinyl: Oracal 591 Translucent Blue
 - Trim Cap, Return, & Backer: MP 14112 Blue
 - N/A
 - N/A

Project No. 202827
Project Signage Package
Location 2535 South State Road 7 - US441
Wellington, FL 33414

Orig. Draft 11.05.20
Project Mgr. Jim Zook
Designer Liz Morgan
Rev. Art N/A
Rev. Date 00.00.00
Page Rev. 000
Rev. Details N/A

This sign design is exclusive property of Identiti Resources, LTD., and is the result of the original and creative work of it's employees. This drawing is submitted to the customer for the sole purpose of purchase of the design or signage manufactured to this design, by Identiti Resources, LTD. Distribution to or use of this sign design by anyone outside of the customer's organization, without expressed, written authorization by Identiti Resources, LTD. is prohibited.



Front-Lit L.E.D Channel Letterset

TYPICAL - Section Detail

*Note: All fasteners to be non-ferrous and all penetrations shall be sealed water tight

Front-Lit L.E.D Logo

TYPICAL - Section Detail

Sign Specs	
A	.125" Aluminum Backer. Painted MP 14112
B	3/16" White Acrylic
C	1" Trim. Painted MP 14112
D	.04" Returns. Painted MP 14112
E	White LEDs
F	Mounting: Anchor Bolts
G	Weep Holes w/ Light Baffle Covering
H	Disconnect Switch
I	Flat face with translucent blue vinyl, 3M color Oracal 591 Trans Blue
J	1" Painted Metal Retainers