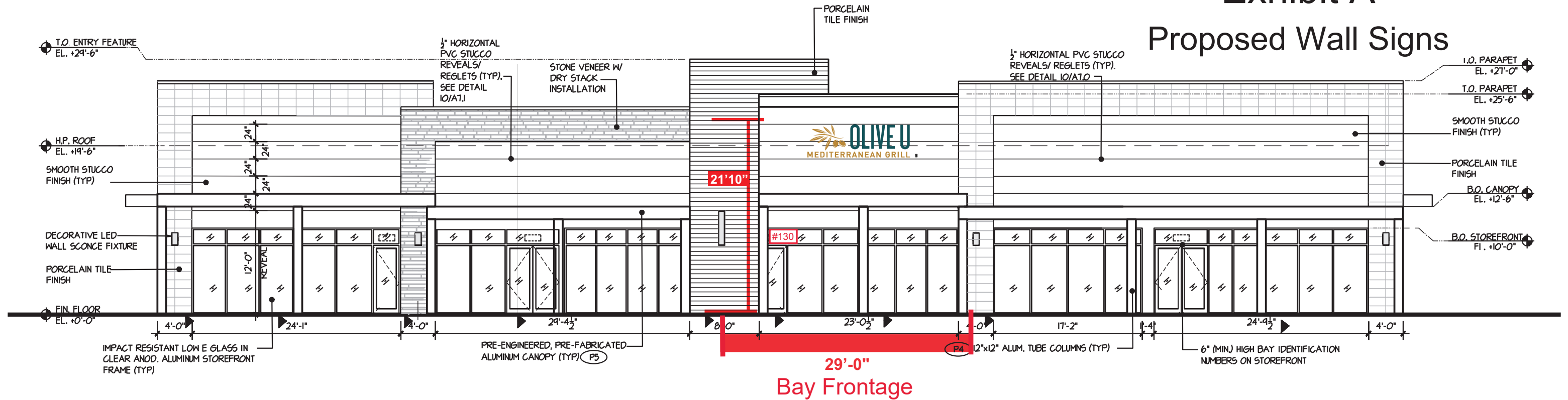


Exhibit A

Proposed Wall Signs



1 EAST ELEVATION: OVERVIEW

SCALE: NTS



See Conditions of Approval for Maximum Allowed Signage

Maximum Allowed Sq. Ft.: 46 (2 sq. ft. per 1 linear ft. of frontage)
Proposed Sq. Ft.: 45.40

Scope of Work:

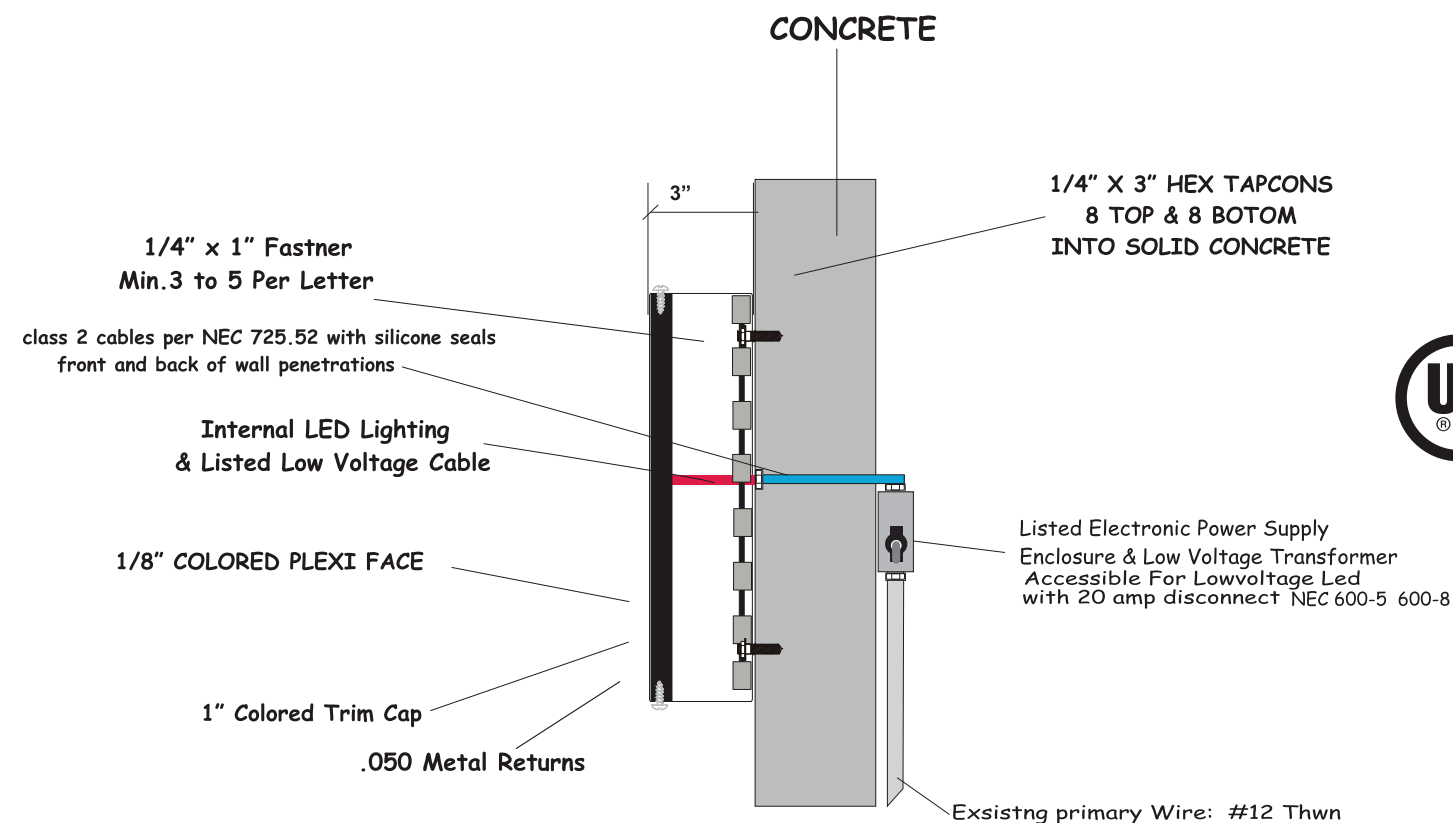
Installation of (1) set of illuminated channel letters



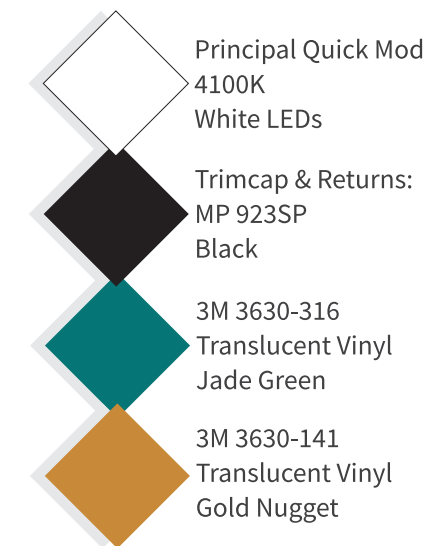
Scope of Work: Manufacture and install (1) set of face lit channel letters, mounted flush to existing wall.

Maximum Allowed Sq. Ft.: 46 (2 sq. ft. per 1 linear ft. of frontage)

Proposed Sq. Ft.: 45.40



EAST ELEVATION



FRONT LIT CHANNEL LETTERS

ILLUMINATION: WHITE LED

ELECTRICAL SPECIFICATIONS

3 : 120 Volt/Led Supply @ 1.5 amps each

1 : 20 amp, External Disconnect Switch

1 : 20 amp, Disconnect Switch on power supply

Total Load: 4.5 amp

Secondary Wire: class 2 cables per NEC 725.52

All Electrical Components UL Listed

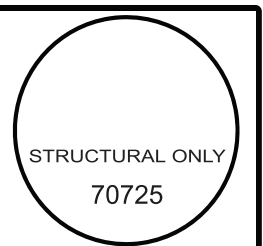
Grounded Electronic Power Supply Enclosure with Sheet Metal Cover, NEC 600-5, 600-8

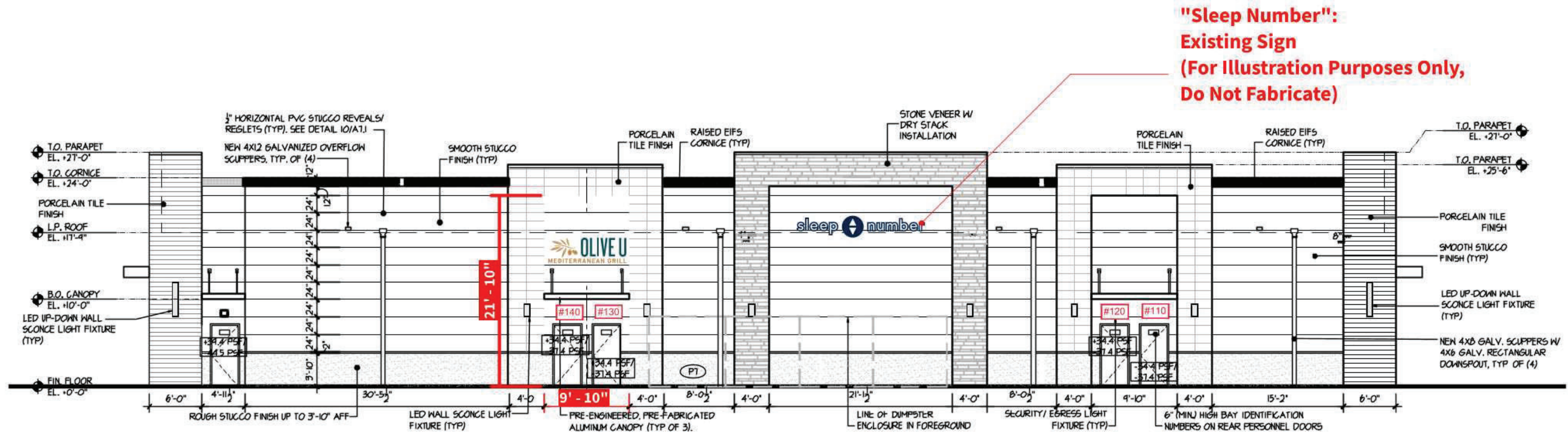


**EC-13003378
954 923 3081**

Note: Signs to withstand
180 MPH 47 PFS EXP C
3 Sec. Gusts as Per ASCE 7-17
FBC 2017 6th EDITION

Thomas R. Turberville, P.E.
1224 SW 32 Street
Fort Lauderdale, FL 33315





1 WEST ELEVATION: OVERVIEW
SCALE: NT3



Maximum Allowed Sq. Ft.: 26
Proposed Sq. Ft.: 25.2

See Conditions of Approval for Maximum Allowed Signage

Scope of Work:

Installation of (1) set of illuminated channel letters mounted to panel.
Letters mounted to panel due to split in wall for (2) stores.
Panel painted to match wall (Sherwin Williams #637 Choice White)

DEVIATION: 60% vs 50% ALLOWED BY CODE



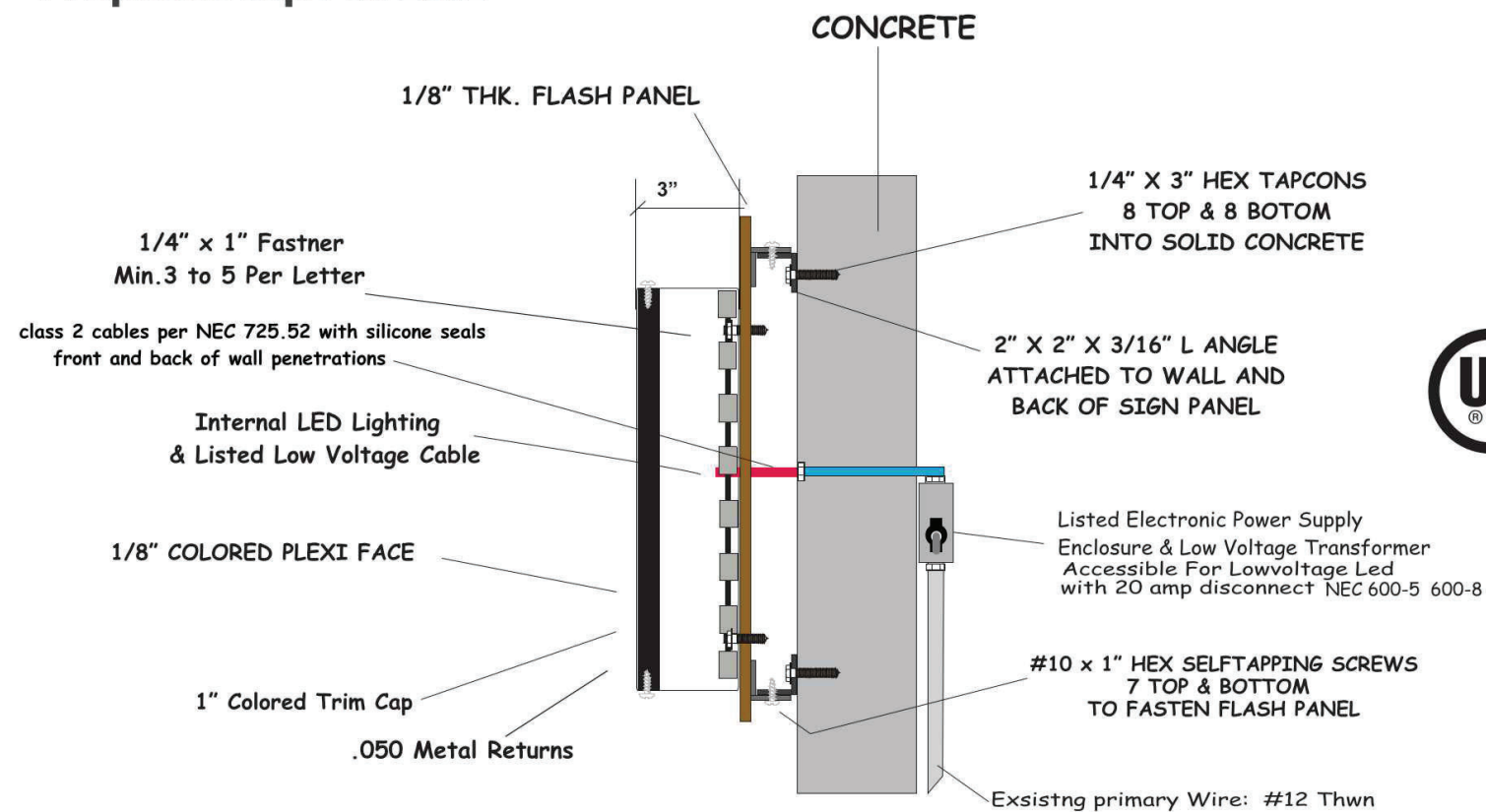
FRONT LIT CHANNEL LETTERS

ILLUMINATION: WHITE LED

ELECTRICAL SPECIFICATIONS

- 3 : 120 Volt/Led Supply @ 1.5 amps each
- 1 : 20 amp, External Disconnect Switch
- 1 : 20 amp, Disconnect Switch on power supply
- Total Load: 4.5 amp
- Secondary Wire: class 2 cables per NEC 725.52
- All Electrical Components UL Listed
- Grounded Electronic Power Supply Enclosure with Sheet Metal Cover, NEC 600-5, 600-8

Maximum Allowed Sq. Ft.: 26
Proposed Sq. Ft.: 25.2



WEST ELEVATION



EC-13003378
954 923 3081

Note: Signs to withstand
180 MPH 47 PFS EXP C
3 Sec. Gusts as Per ASCE 7-17
FBC 2017 6th EDITION

Thomas R. Turberville, P.E.
1224 SW 32 Street
Fort Lauderdale, FL 33315

