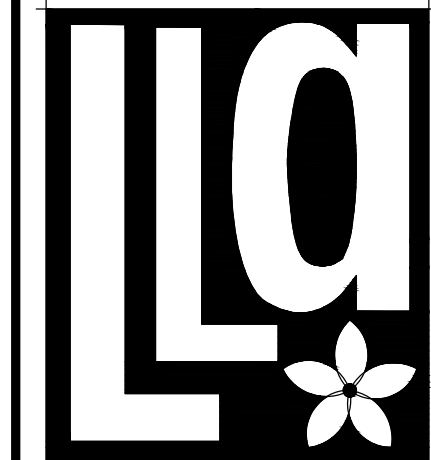
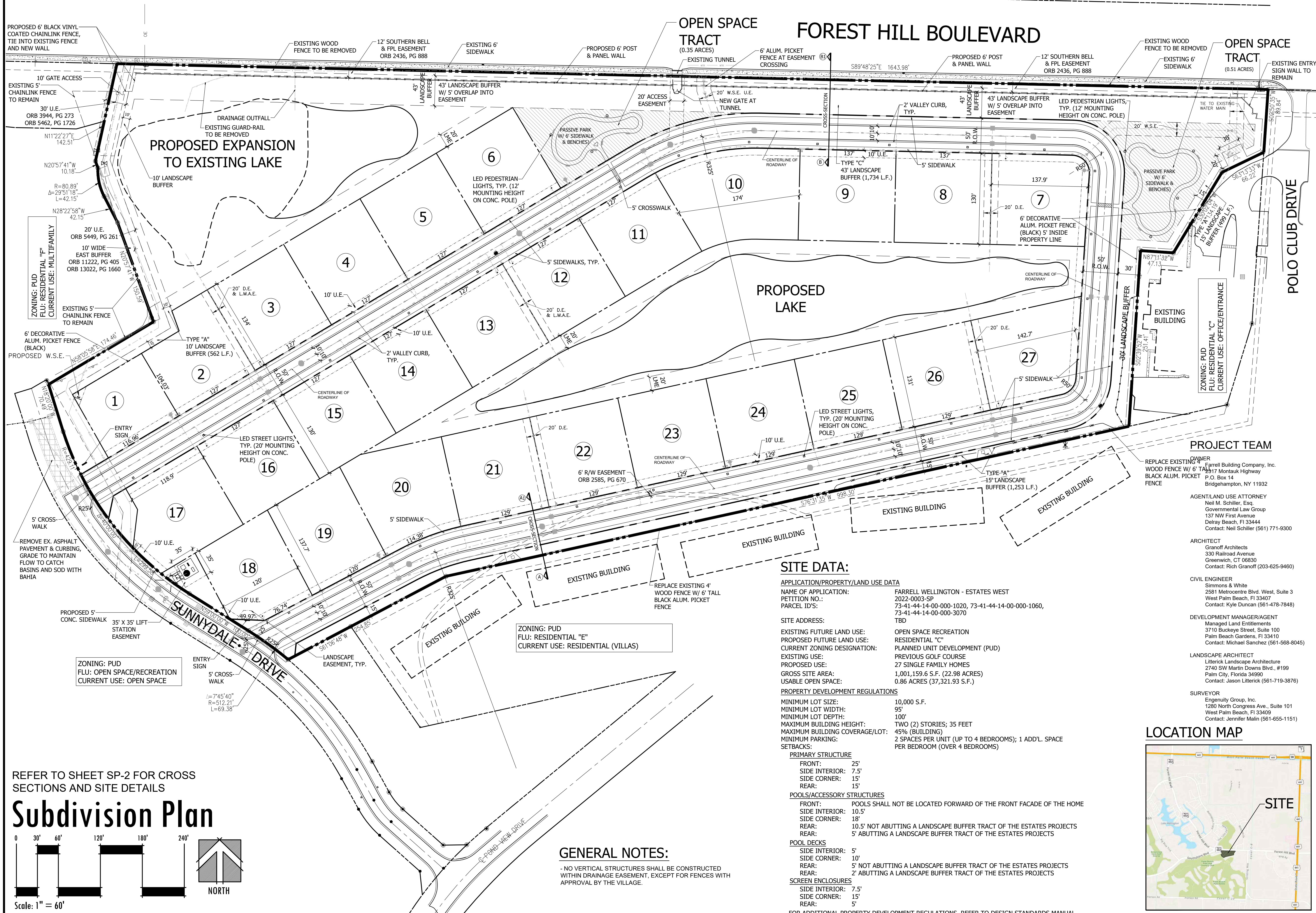


Exhibit G - Proposed Site Plan



Litterick
Landscape
Architecture

2740 SW Martin Downs Blvd. #199
Palm City, FL 34990
561-719-3876
JasonLA1677@yahoo.com

Project Name

Farrell Wellington - Estates West

Wellington, Florida

PROJECT TEAM

OWNER
REPLACE EXISTING 4' FARRELL BUILDING COMPANY, INC.
WOOD FENCE W/ 6' TALL 2517 MONTAUK HIGHWAY
BLACK ALUM. PICKET P.O. BOX 14
FENCE BRIDGEHAMPTON, NY 11932

AGENT/LAND USE ATTORNEY
Neil M. Schiller, Esq.
Governmental Law Group
137 NW First Avenue
Delray Beach, FL 33444
Contact: Neil Schiller (561) 771-9300

ARCHITECT
Granoff Architects
330 Railroad Avenue
Greenwich, CT 06830
Contact: Rich Granoff (203-625-9460)

CIVIL ENGINEER
Simmons & White
2581 Metrocentre Blvd. West, Suite 3
West Palm Beach, FL 33407
Contact: Kyle Duncan (561-478-7848)

DEVELOPMENT MANAGER/AGENT
Managed Land Entitlements
3710 Buckeye Street, Suite 100
Palm Beach Gardens, FL 33410
Contact: Michael Sanchez (561-568-8045)

LANDSCAPE ARCHITECT
Litterick Landscape Architecture
2740 SW Martin Downs Blvd., #199
Palm City, Florida 34990
Contact: Jason Litterick (561-719-3876)

SURVEYOR
Engenuity Group, Inc.
1280 North Congress Ave., Suite 101
West Palm Beach, FL 33409
Contact: Jennifer Malin (561-655-1151)

LOCATION MAP



Landscape Architect of Record



Jason M. Litterick, RLA
(LA0001677)

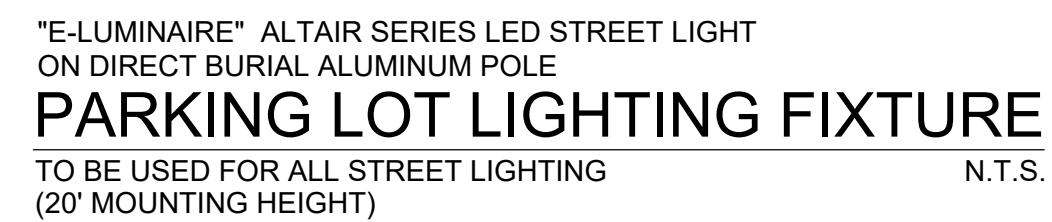
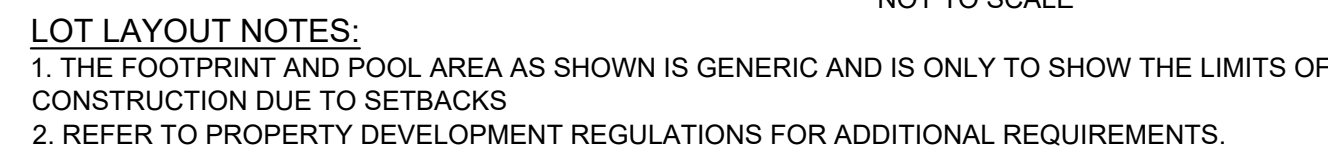
Scale: 1" = 60'-0"

Designed:	JMI
Drawn:	JMI
Approved:	JMI
Date:	7/1/22
Job no.	
Revisions:	11/11/22
	2/22/23

Sheet No.

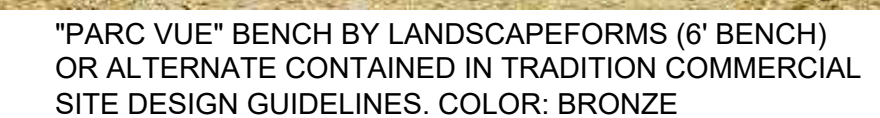
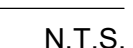
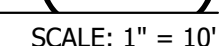
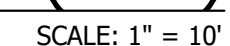
SP-1

FOR ADDITIONAL PROPERTY DEVELOPMENT REGULATIONS, REFER TO DESIGN STANDARDS MANUAL



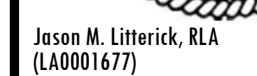
- (1) LIGHTING POLE: THE MANUFACTURER IS TO PROVIDE CERTIFICATION BY FLORIDA PE, SHOWING WIND LOAD RATING OF 170 MPH WITH SPECIFIED FIXTURES INSTALLED. THE FINAL POLE SET IS TO BE DETERMINED BY THE PROFESSIONAL ENGINEER.
- (2) INTERNAL WIRING. INTERNAL WIRING TO BE IN UL LISTED CONDUITS, INSIDE POLE. SEE NOTE 3.
- (3) LIGHT FIXTURE CONNECTIONS. REFER TO LIGHT MANUFACTURER FOR REQUIREMENTS, INCLUDING TEMPERATURE REQUIREMENTS (COMMONLY 150C). CONDUCTORS TO BE UL LISTED "FIXTURE" CONDUCTORS. (UL "RECOGNIZED" APPLIANCE WIRES NOT PERMITTED). OBTAIN BUILDING DEPARTMENT APPROVAL FOR CONDUCTORS, CONNECTORS, AND ACCESSIBILITY.
- (4) CONDUITS. CONDUITS BELOW HAND HOLE IN POLE TO BE UL LISTED WITH "GROUNDING CIRCUIT" TYPING.
- (5) HAND HOLE. HAND HOLE WITH UL LISTED BOX CAST IN PLACE WITH WATERPROOF SPLICES.
- (6) GROUND WIRE IN POLE. CONNECT TOP TO #4 BARE GROUND CONDUCTOR. CONNECT TOP TO GROUND IN UTILITY RATES.
- (7) TRAFFIC RATED PULL BOX. HIGH STRENGTH COMPOSITE CONSTRUCTION RATED FOR DESIGN LOAD OF 5,000 LBS OVER A 10" SQUARE. GRADE LETTERING = "LIGHTING". DO NOT PLACE IN PAVED AREA, KEEP IN COVERED AREAS. CONCRETE COMPOSITE LBS OVER 5,000 LBS.
- (8) MUCK. IF SOFT SOILS ARE FOUND ON THE PROPERTY, THIS POLE DESIGN WILL BE MODIFIED TO ACCOMMODATE. NOTIFY ENGINEER IMMEDIATELY.
- (9) SITE CONDITIONS. IF SITE CONDITIONS ARE DISCOVERED WHICH REQUIRE ANY POLE TO BE MOVED OVER 4 FEET, NOTIFY THE ENGINEER IMMEDIATELY.

TO BE USED ON ALL STREET & PEDESTRIAN LIGHTING N.T.S.
 - 12' MOUNTING HEIGHT FOR PEDESTRIAN LIGHTING
 - 20' MOUNTING HEIGHT FOR STREET LIGHTING



NTS

Project Name



Scale: As Noted

Designed:	JML
Drawn:	JML
Approved:	JML
Date:	7/1/22
Job no.	
Revisions:	11/11/22
	2/22/23

Sheet No.