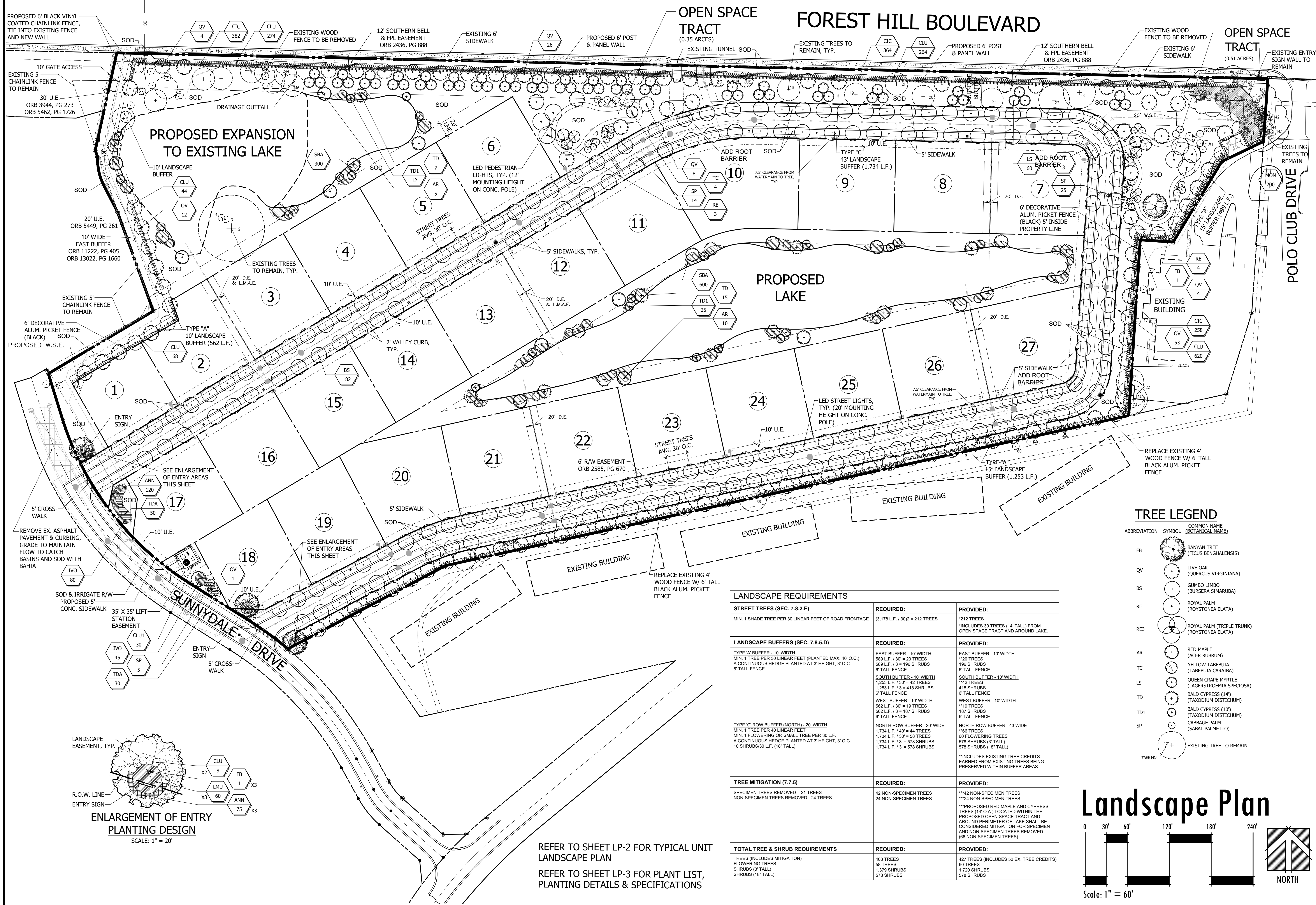


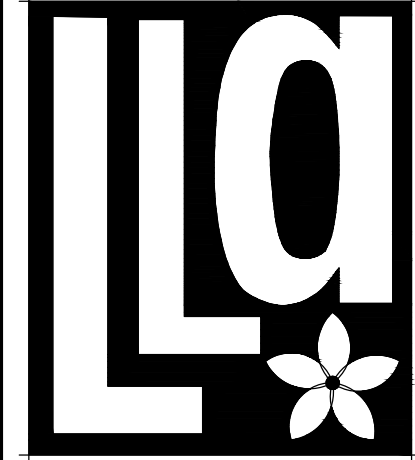
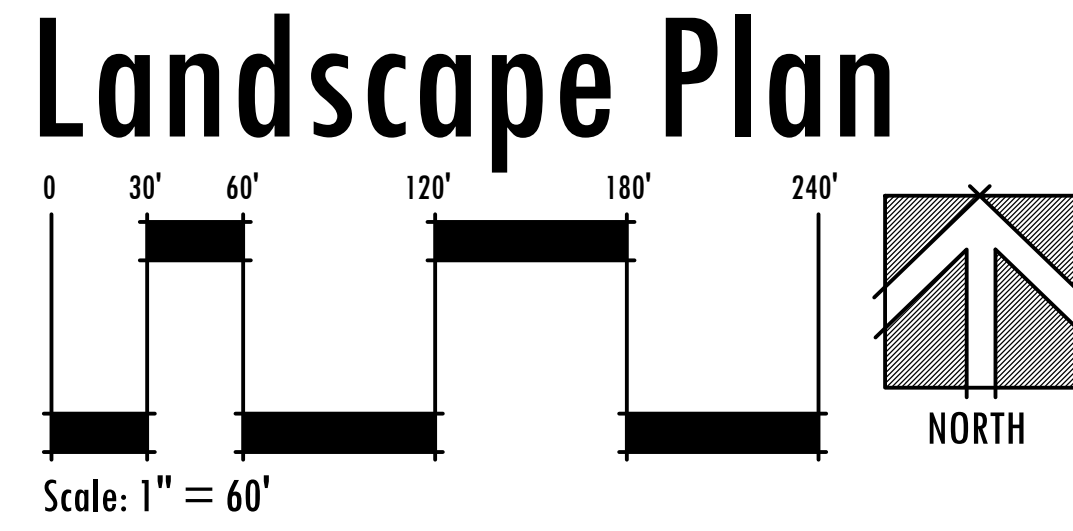
Exhibit I - Proposed Landscape Plan



TREE LEGEND		
ABBREVIATION	SYMBOL	COMMON NAME (BOTANICAL NAME)
FB		BANYAN TREE (FICUS BENGALENSIS)
QV		LIVE OAK (QUERCUS VIRGINIANA)
BS		GUMBO LIMBO (BURSERA SIMARUBA)
RE		ROYAL PALM (ROYSTONIA ELATA)
RE3		ROYAL PALM (TRIPLE TRUNK) (ROYSTONIA ELATA)
AR		RED MAPLE (ACER RUBRUM)
TC		YELLOW TABEBUIA (TABEBUIA CARAIBA)
LS		QUEEN CRAPE MYRTLE (LAGERSTROEMIA SPECIOSA)
TD		BALD CYPRESS (14') (TAXODIUM DISTICHUM)
TD1		BALD CYPRESS (10') (TAXODIUM DISTICHUM)
SP		CABBAGE PALM (SABAL PALMETO)
72-L		EXISTING TREE TO REMAIN

LANDSCAPE REQUIREMENTS		
STREET TREES (SEC. 7.8.2.E) MIN. 1 SHADE TREE PER 30 LINEAR FEET OF ROAD FRONTAGE	REQUIRED: 3,178 L.F. / 30/2 = 212 TREES	PROVIDED: 212 TREES *INCLUDES 30 TREES (14' TALL) FROM OPEN SPACE TRACT AND AROUND LAKE.
LANDSCAPE BUFFERS (SEC. 7.8.5.D) TYPE 'A' BUFFER - 10' WIDTH MIN. 1 TREE PER 30 LINEAR FEET (PLANTED MAX. 40' O.C.) A CONTINUOUS HEDGE PLANTED AT 3' HEIGHT, 3' O.C. 6' TALL FENCE EAST BUFFER - 10' WIDTH 589 L.F. / 3' = 196 TREES 6' TALL FENCE SOUTH BUFFER - 10' WIDTH 1,253 L.F. / 3' = 418 TREES 6' TALL FENCE WEST BUFFER - 10' WIDTH 562 L.F. / 3' = 187 TREES 6' TALL FENCE TYPE 'C' ROW BUFFER (NORTH) - 20' WIDTH MIN. 1 TREE PER 40 LINEAR FEET MIN. 1 FLOWERING OR SMALL TREE PER 30 L.F. A CONTINUOUS HEDGE PLANTED AT 3' HEIGHT, 3' O.C. 10 SHRUBS/30 L.F. (18' TALL) NORTH ROW BUFFER - 20' WIDE 1,734 L.F. / 40' = 44 TREES 1,734 L.F. / 30' = 58 TREES 1,734 L.F. / 3' = 578 SHRUBS 1,734 L.F. / 3' = 578 SHRUBS NORTH ROW BUFFER - 43 WIDE 56 TREES 60 FLOWERING TREES 578 SHRUBS (3' TALL) 578 SHRUBS (18' TALL) *INCLUDES EXISTING TREE CREDITS EARNED FROM EXISTING TREES BEING PRESERVED WITHIN BUFFER AREAS.	REQUIRED: EAST BUFFER - 10' WIDTH 589 L.F. / 3' = 196 TREES 6' TALL FENCE SOUTH BUFFER - 10' WIDTH 1,253 L.F. / 3' = 418 TREES 6' TALL FENCE WEST BUFFER - 10' WIDTH 562 L.F. / 3' = 187 TREES 6' TALL FENCE TYPE 'C' ROW BUFFER (NORTH) - 20' WIDTH MIN. 1 TREE PER 40 LINEAR FEET MIN. 1 FLOWERING OR SMALL TREE PER 30 L.F. A CONTINUOUS HEDGE PLANTED AT 3' HEIGHT, 3' O.C. 10 SHRUBS/30 L.F. (18' TALL) NORTH ROW BUFFER - 20' WIDE 1,734 L.F. / 40' = 44 TREES 1,734 L.F. / 30' = 58 TREES 1,734 L.F. / 3' = 578 SHRUBS 1,734 L.F. / 3' = 578 SHRUBS NORTH ROW BUFFER - 43 WIDE 56 TREES 60 FLOWERING TREES 578 SHRUBS (3' TALL) 578 SHRUBS (18' TALL) *INCLUDES EXISTING TREE CREDITS EARNED FROM EXISTING TREES BEING PRESERVED WITHIN BUFFER AREAS.	PROVIDED: 212 TREES *INCLUDES 30 TREES (14' TALL) FROM OPEN SPACE TRACT AND AROUND LAKE. EAST BUFFER - 10' WIDTH 589 L.F. / 3' = 196 TREES 6' TALL FENCE SOUTH BUFFER - 10' WIDTH 1,253 L.F. / 3' = 418 TREES 6' TALL FENCE WEST BUFFER - 10' WIDTH 562 L.F. / 3' = 187 TREES 6' TALL FENCE TYPE 'C' ROW BUFFER (NORTH) - 20' WIDTH MIN. 1 TREE PER 40 LINEAR FEET MIN. 1 FLOWERING OR SMALL TREE PER 30 L.F. A CONTINUOUS HEDGE PLANTED AT 3' HEIGHT, 3' O.C. 10 SHRUBS/30 L.F. (18' TALL) NORTH ROW BUFFER - 20' WIDE 1,734 L.F. / 40' = 44 TREES 1,734 L.F. / 30' = 58 TREES 1,734 L.F. / 3' = 578 SHRUBS 1,734 L.F. / 3' = 578 SHRUBS NORTH ROW BUFFER - 43 WIDE 56 TREES 60 FLOWERING TREES 578 SHRUBS (3' TALL) 578 SHRUBS (18' TALL) *INCLUDES EXISTING TREE CREDITS EARNED FROM EXISTING TREES BEING PRESERVED WITHIN BUFFER AREAS.
TREE MITIGATION (7.7.5) SPECIMEN TREES REMOVED = 21 TREES NON-SPECIMEN TREES REMOVED = 24 TREES	REQUIRED: 42 NON-SPECIMEN TREES 24 NON-SPECIMEN TREES	PROVIDED: 42 NON-SPECIMEN TREES 24 NON-SPECIMEN TREES ***PROPOSED RED MAPLE AND CYPRESS TREES (14' O.A.) LOCATED WITHIN THE PROPOSED OPEN SPACE TRACT AND AROUND PERIMETER OF LAKE SHALL BE CONSIDERED MITIGATION FOR SPECIMEN AND NON-SPECIMEN TREES REMOVED. (66 NON-SPECIMEN TREES)
TOTAL TREE & SHRUB REQUIREMENTS TREES (INCLUDES MITIGATION) FLOWERING TREES SHRUBS (3' TALL) SHRUBS (18' TALL)	REQUIRED: 403 TREES 58 TREES 1,378 SHRUBS 578 SHRUBS	PROVIDED: 427 TREES (INCLUDES 52 EX. TREE CREDITS) 60 TREES 1,720 SHRUBS 578 SHRUBS

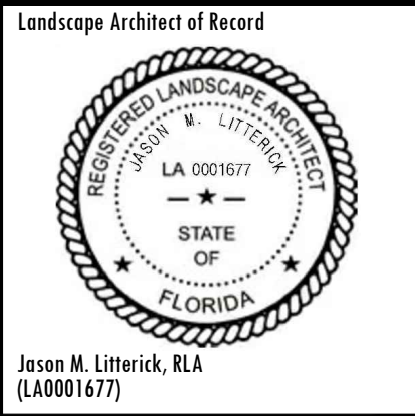
REFER TO SHEET LP-2 FOR TYPICAL UNIT LANDSCAPE PLAN
REFER TO SHEET LP-3 FOR PLANT LIST, PLANTING DETAILS & SPECIFICATIONS



Litterick Landscape Architecture
2740 SW Martin Downs Blvd. #199
Palm City, FL 34990
561-719-3876
JasonLA1677@yahoo.com

Project Name

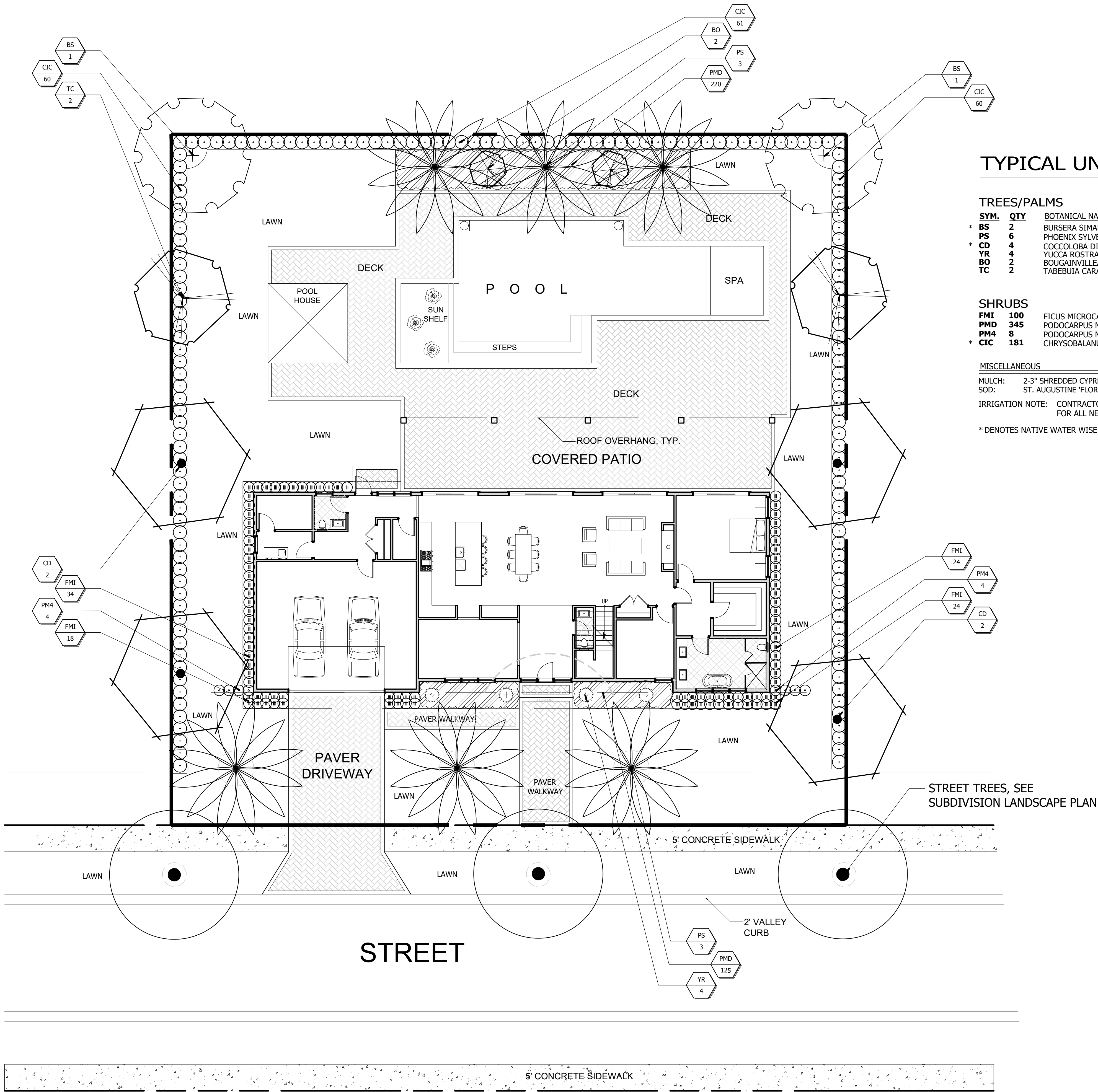
Farrell Wellington - Estates West
Wellington, Florida



Scale: 1" = 60'-0"

Designed: JML
Drawn: JML
Approved: JML
Date: 7/1/22
Job no.
Revisions: 11/11/22
2/22/23

Sheet No.
LP-1



TYPICAL UNIT PLANT LIST

TREES/PALMS					
SYM.	QTY	BOTANICAL NAME	COMMON NAME	SIZE	SPACING
* BS	2	BURSERIA SIMARUBA	GUMBO LIMBO	16' X 10' MIN	A.S.
PS	6	PHOENIX SYLVESTRIS	SYLVESTER PALM	10'WD., DIAMOND CUT TRUNK	A.S.
* CD	4	COCCOLOBA DIVERSIFOLIA	PIEGON PLUM	14' O.A.	A.S.
YR	4	YUCCA ROSTRADA	YUCCA ROSTRADA	5' O.A.	A.S.
BO	2	BOUGAINVILLEA STD.	PURPLE BOUGAINVILLEA	6' O.A., 3' SPD.	A.S.
TC	2	TABEUBIA CARAIBA	YELLOW TABEUBIA	14' O.A., 3" DBH.	A.S.
SHRUBS					
FMI	100	FICUS MICROCARPA 'GREEN ISLAND'	FICUS GREEN ISLAND	18"X18" MIN.	18"-24"
PM4	345	PODOCARPUS MACROPHYLLUS 'PRINGLES'	PODOCARPUS PRINGLES	15"X15" MIN.	18" O.C.
PM4	8	PODOCARPUS MACROPHYLLUS	PODOCARPUS	4'X2' MIN	24" O.C.
* CIC	181	CHRYSOBALANUS ICACO	RED-TIP COCOPLUM	24" X 18"	24" O.C.

MISCELLANEOUS

MULCH: 2-3" SHREDDED CYPRESS MULCH
SOD: ST. AUGUSTINE 'FLORITAM'

IRRIGATION NOTE: CONTRACTOR SHALL PROVIDE 100% COVERAGE FOR ALL NEW LANDSCAPE AND LAWN AREAS

* DENOTES NATIVE WATER WISE PLANT

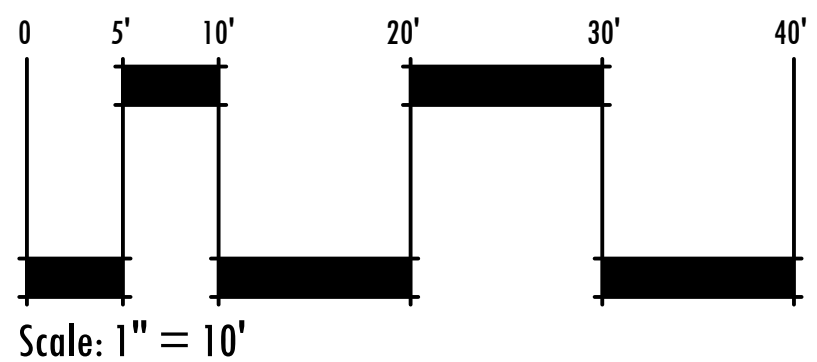
LANDSCAPE REQUIREMENTS

SITE AREA: 16,510.0 S.F. (0.38 ACRES)
TREES REQUIRED: 11 TREES (1 PER 1,500 S.F. OF LOT AREA)
TREES PROVIDED: 11 TREES
FLOWERING TREES REQUIRED: 2 TREES (1 PER 10 REQUIRED TREES)
FLOWERING TREES PROVIDED: 2 TREES
SHRUBS REQUIRED: 220 SHRUBS (20 PER 1,500 S.F. OF LOT AREA)
SHRUBS PROVIDED: 220
GROUNDCOVERS REQUIRED: 110 GROUNDCOVERS (10 PER 1,500 S.F. OF LOT AREA)
GROUNDCOVERS PROVIDED: 110

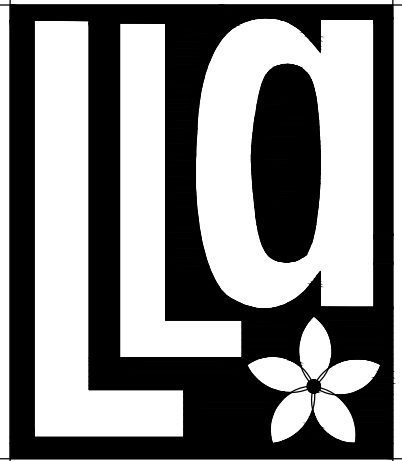
NOTES:

- MIN. 25% OF THE REQUIRED TREES & 75% OF THE REQUIRED SHRUBS SHALL BE PLANTED IN THE FRONT YARD.
- MAX. 25% OF THE REQUIRED TREES CAN BE SPECIMEN PALM TREES.
- PALM TREES LESS THAN 6" CAL. SHALL BE CLUMPED INTO GROUPS OF THREE TO EQUAL 1 REQUIRED TREE.
- TREES FOR ONE-STORY RESIDENCES SHALL BE MIN. 12' TALL, PALMS SHALL BE MIN. 8' GRAY WOOD.
- TREES FOR TWO-STORY RESIDENCES SHALL BE MIN. 14' TALL, PALMS SHALL BE MIN. 12' GRAY WOOD.
- MINIMUM ONE FLOWERING TREE SHALL BE PLANTED FOR EVERY 10 REQUIRED TREES.
- 50% OF THE PROPOSED PLANTINGS SHALL BE FROM THE VILLAGE OF WELLINGTON'S PREFERRED SPECIES LIST.
- ALL NEW LANDSCAPE MATERIAL SHALL BE FLORIDA NO. 1 QUALITY.

Typical Unit Landscape Plan



REFER TO SHEET LP-3 FOR PLANTING DETAILS & SPECIFICATIONS



Litterick Landscape Architecture

2740 SW Martin Downs Blvd. #199
Palm City, FL 34990
561-719-3876
Jason.LA1677@yahoo.com

Project Name

Farrell Wellington - Estates West
Wellington, Florida

Landscape Architect of Record



Jason M. Litterick, RLA
(LA0001677)

Scale: 1" = 10'

Designed: JML
Drawn: JML
Approved: JML
Date: 7/1/22
Job no.
Revisions: 11/11/22
2/22/23

Sheet No.

LP-2

PLANT LIST

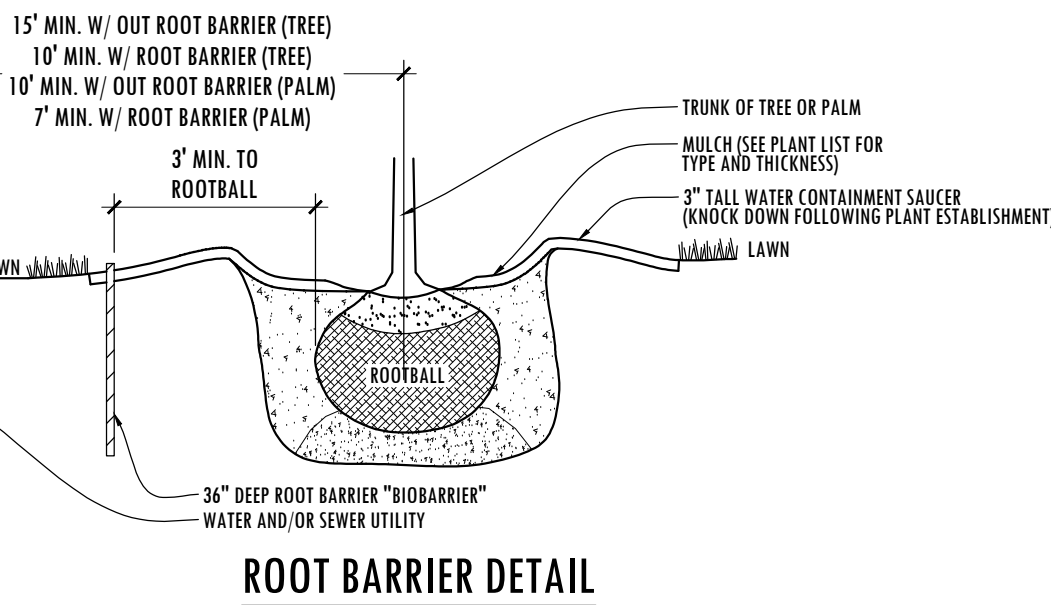
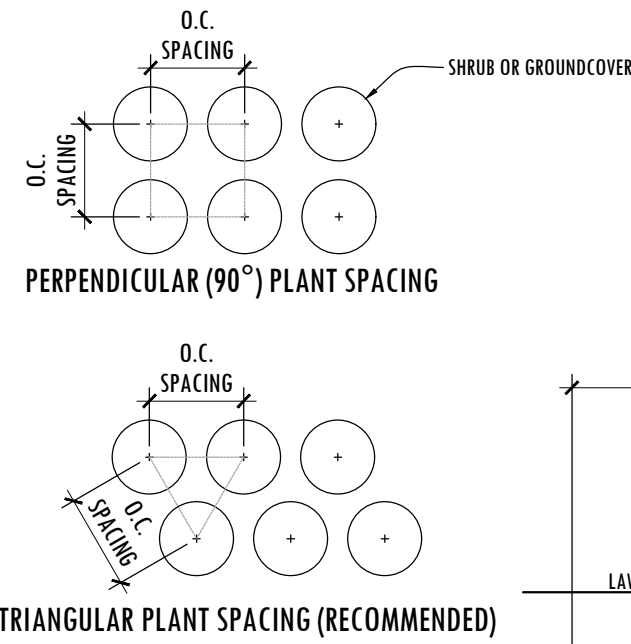
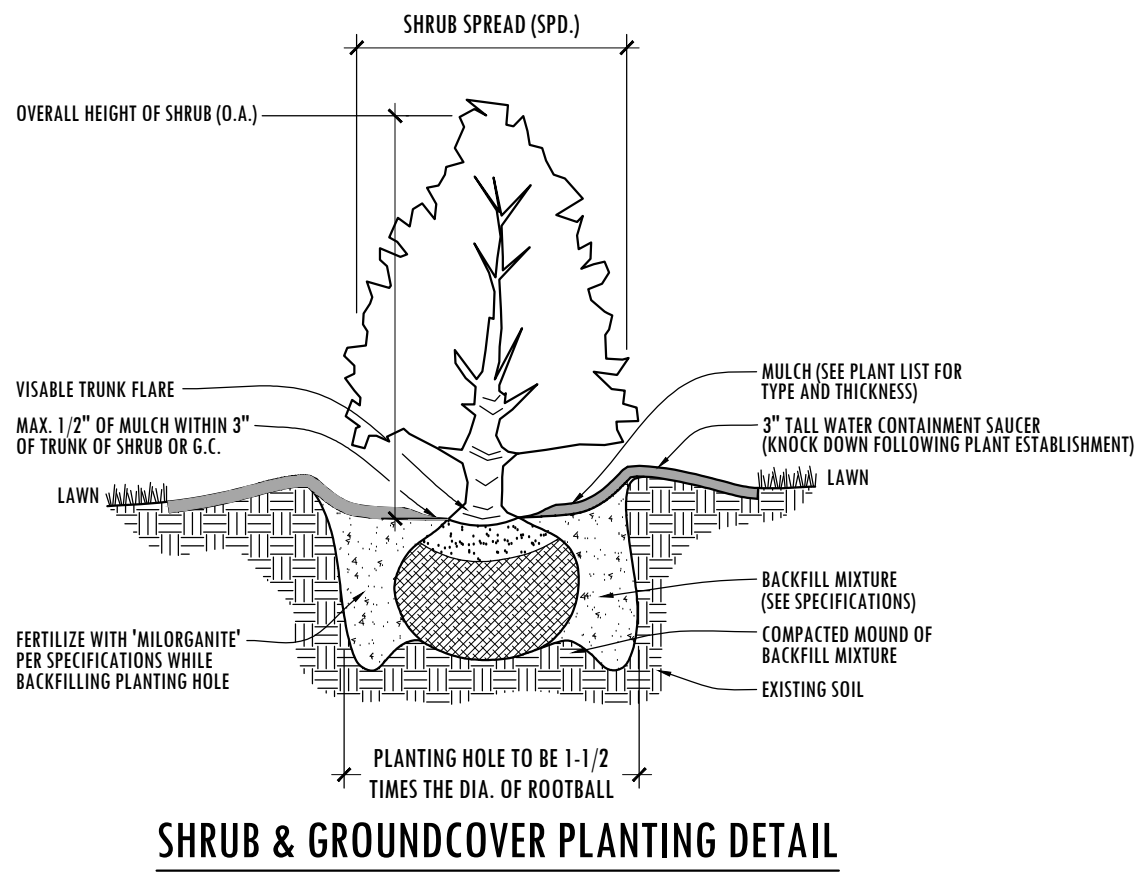
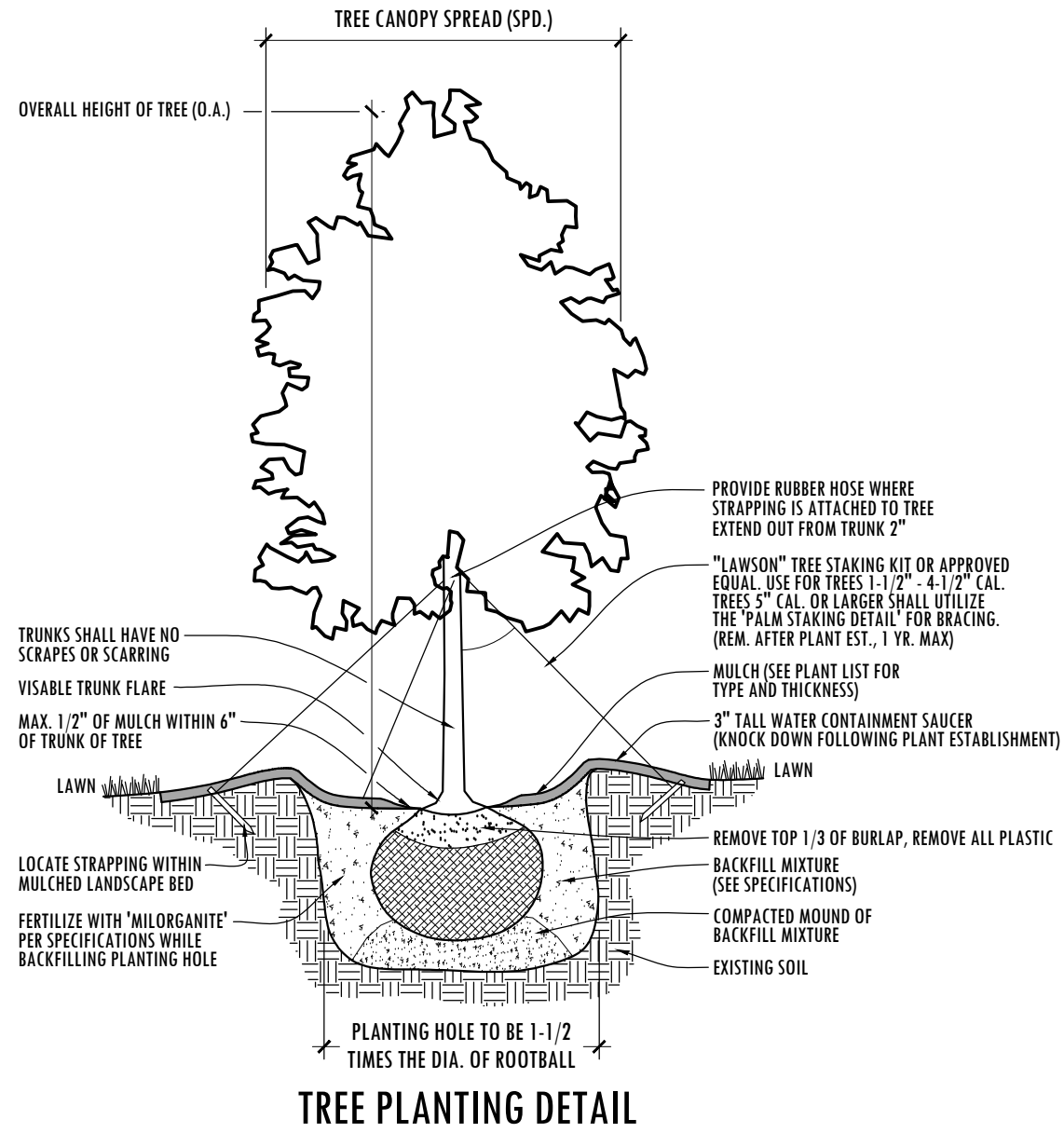
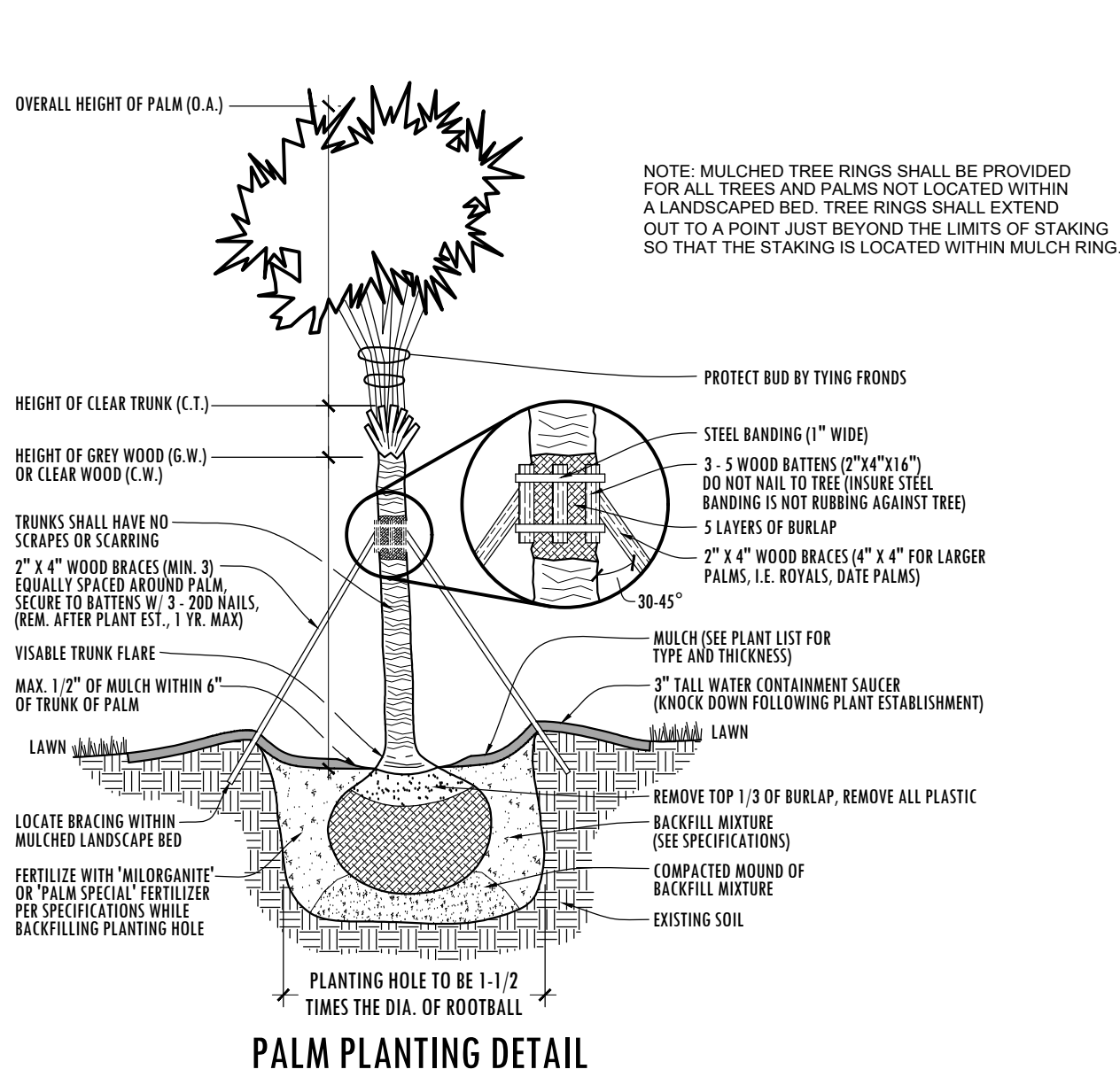
SYM	QTY.	BOTANICAL NAME	COMMON NAME	HEIGHT	SPR.	NOTES:
* V	SP 44	SABAL PALMETTO	CABBAGE PALM	12-22' C.T.	N/A	SLICK TRUNK, HURRICANE CUT, 2/3 CURVED TRUNKS, STAGGER HEIGHTS
* V	RE 7	ROYSTONIA ELATA	FL. ROYAL PALM	12-14' G.W.	N/A	FULL & THICK, MATCHED HEIGHTS
* V	AR 15	ACER RUBRUM	RED MAPLE	14' O.A., 3" DBH	6'	FULL & THICK
* V	QV 100	QUERCUS VIRGINIANA	LIVE OAK	14' O.A., 3" DBH	6'	FULL & THICK
* V	TD 22	TAXODIUM DISTICHUM	BALD CYPRESS	14' O.A., 3" DBH	6'	FULL & THICK
* V	TD1 37	TAXODIUM DISTICHUM	BALD CYPRESS	10' O.A., 2" DBH	4-5'	FULL & THICK
M	FB 4	FICUS BENGALENSIS	BANYAN TREE	20' O.A.	20'	FULL & THICK, SPECIMEN, PROVIDE PHOTOS OF TREE FOR APPROVAL.
M	TC 7	TABEBUIA CARAIBA	YELLOW TABEBUIA	14' O.A., 3" DBH	7'	FULL & THICK
* V	BS 182	BURSERIA SIMARUBA	GUMBO LIMBO	14' O.A., 3" DBH	6'	FULL & THICK
M	LS 60	LAGERSTROEMIA SPECIOSA	QUEEN CRAPE MYRTLE	10' O.A.	4'	FULL & THICK

SYM	QTY.	BOTANICAL NAME	COMMON NAME	SIZE	SPACING	NOTES:
* V	CLU 1286	CLUSIA GUTTIFERA	SMALL LEAF CLUSIA	#7, 36" O.A.	36" O.C.	FULL & THICK
* V	CLU1 30	CLUSIA GUTTIFERA	SMALL LEAF CLUSIA	5' O.A., 36" SPD.	36" O.C.	FULL & THICK
* V	CIC 1004	CHRYSOBALANUS ICACO	RED TIP COCOPLUM	#3, 24" O.A.	24" O.C.	FULL & THICK
* V	SBA 900	SPARTINA BAKERI	SAND CORDGRASS	#3, 20" O.A.	36-48" O.C.	FULL & THICK
* V	TDA 80	TRIPASACUM DACTYLOIDES	FAKAHATCHEE GRASS	#3, 20" O.A.	36" O.C.	FULL & THICK
* V	IVO 125	ILEX VOMITORIA	DWF. YAUPOIN HOLLY	#3, 14" O.A.	24" O.C.	FULL & THICK
V	LMU 180	LIRIOPE MUSCARI	GREEN LIRIOPE	#3, 14" O.A.	18" O.C.	FULL & THICK
M	ANN 345	ANNUALS	IN SEASON	4-6" POTS	12" O.C.	FULL & THICK
M	MON 200	MONSTERA DELICIOSA	SWISS CHEESE PLANT	#7, 36" X 36"	48" O.C.	FULL & THICK

* ASTERISK DENOTES NATIVE PLANT MATERIAL
V INDICATES VERY DROUGHT TOLERANT PLANT MATERIAL
M INDICATES MODERATELY DROUGHT TOLERANT PLANT MATERIAL

SOD: ST. AUGUSTINE 'FLORITAM' (BAHIA SOD WHERE NOTED)
MULCH: 3" SHREDDED MELALEUCA MULCH (OR APPROVED RECYCLED MULCH) TO BE APPLIED TO ALL PLANTING BEDS.

IRRIGATION NOTE:
ALL NEW LANDSCAPE AREAS SHALL BE RECEIVE 100% OVERLAP COVERAGE FROM A FULLY AUTOMATIC IRRIGATION SYSTEM EQUIPPED WITH A RAIN SENSOR.
IRRIGATION WATER SOURCE: WELL & PUMP



SPECIFICATIONS

1. SCOPE OF WORK

LANDSCAPE CONTRACT WORK INCLUDES, BUT IS NOT LIMITED TO, SOIL PREPARATION, FINE OR FINISH GRADING, FURNISHING AND INSTALLING PLANT MATERIAL, WATERING, STAKING, GUYING AND MULCHING.

ALL LABOR AND MATERIAL FOR SOIL AMENDMENTS AND FERTILIZER THAT IS REQUIRED TO INSURE THE SUCCESSFUL ESTABLISHMENT AND SURVIVAL OF THE PROPOSED VEGETATION, AS WELL AS ALL THE COST FOR THE REMOVAL OF UNSUITABLE OR EXCESS BACKFILL MATERIAL, SHALL BE INCLUDED IN THE CONTRACTOR'S BID TO PERFORM THE WORK REPRESENTED IN THIS PLAN SET.

2. QUALITY ASSURANCE

LANDSCAPE CONTRACTOR MUST BE REGULARLY ENGAGED IN THE INSTALLATION OF LIVING PLANT MATERIAL. LABOR CREWS SHALL BE CONTROLLED AND DIRECTED BY A LANDSCAPE FOREMAN WELL VERSED IN LANDSCAPE INSTALLATION, PLANT MATERIALS, READING PLANS AND COORDINATION BETWEEN THE JOB AND NURSERY.

THE LANDSCAPE CONTRACTOR AND IRRIGATION CONTRACTOR SHALL REVIEW LAYOUT AND SCHEDULING PRIOR TO INSTALLATION OF MATERIAL. MINOR ADJUSTMENT TO IRRIGATION DESIGN MAY BE MADE IN RESPONSE TO THE NEEDS OF SPECIFIC PLANT MATERIAL. THE LANDSCAPE ARCHITECT MUST BE NOTIFIED OF SUCH CHANGES.

3. MATERIALS

PLANT SIZE AND QUALITY

PLANT SPECIES AND SIZES SHALL CONFORM TO THOSE INDICATED ON THE DRAWINGS, NOMENCLATURE SHALL CONFORM TO STANDARD PLANT NAMES, 1942 EDITION. ALL NURSERY STOCK SHALL BE IN ACCORDANCE WITH GRADES AND STANDARDS FOR NURSERY PLANTS PARTS 1 & 1, LATEST EDITION PUBLISHED BY THE FLORIDA DEPARTMENT OF AGRICULTURE AND CONSUMER SERVICES, UNLESS SPECIFIED OTHERWISE. ALL PLANTS SHALL BE FLORIDA GRADE NUMBER 1 OR BETTER AS DETERMINED BY THE FLORIDA DIVISION OF PLANT INDUSTRY. TIGHTLY KNIT PLANT, SO TRAINED OR FAVORED IN ITS DEVELOPMENT THAT FIRST APPEARANCE IS UNQUESTIONABLE AND IT IS OUTSTANDINGLY SUPERIOR IN FORM, NUMBER OF BRANCHES, COMPACTNESS AND SYMMETRY. ALL PLANTS SHALL BE FRESHLY DUG, SOUND, HEALTHY, VIGOROUS, WELL BRANCHED AND FREE OF DISEASE AND INSECT EGGS AND LARVAE AND SHALL HAVE ADEQUATE ROOT SYSTEMS. TREES AND PALMS FOR PLANTING ROWS SHALL BE UNIFORM IN SIZE AND SHAPE. ALL MATERIALS SHALL BE SUBJECT TO APPROVAL BY THE LANDSCAPE ARCHITECT. THE PLANTS FURNISHED SHALL BE NORMAL FOR THE VARIETY AND FLORIDA NUMBER 1. PLANTS SHALL BE PRUNED PRIOR TO DELIVERY ONLY UPON THE APPROVAL OF THE LANDSCAPE ARCHITECT. ALL PLANTS SHALL BE FREE OF WEEDS OR ANY OTHER OBJECTIONABLE VEGETATION.

ALL CONTAINER GROWN MATERIAL SHALL BE HEALTHY, VIGOROUS, WELL-ROOTED PLANTS AND ESTABLISHED IN THE CONTAINER IN WHICH THEY ARE SOLD. THE PLANTS SHALL HAVE TOPS OF GOOD QUALITY AND BE IN A HEALTHY GROWING CONDITION.

CONTAINER GROWN PLANTS SHALL HAVE A DEVELOPED ROOT STRUCTURE SO THAT THE ROOT MASS STAYS IN TACT WHEN REMOVED FROM CONTAINER. IN NO CASE SHALL THE PLANT CONTAIN CIRCULING ROOTS NOR BE ROOT BOUND.

QUANTITIES

ALL QUANTITIES INDICATED ON THE PLANT LIST ARE INTENDED AS A GUIDE FOR THE BIDDERS AND DOES NOT RELIEVE THE BIDDER OF HIS RESPONSIBILITY TO DO A COMPREHENSIVE PLANT TAKE OFF. SHALL A DISCREPANCY OF CUR BETWEEN THE BIDDER'S TAKE OFF AND THE PLANT LIST QUANTITY, THE LANDSCAPE ARCHITECT IS TO BE NOTIFIED FOR CLARIFICATION PRIOR TO THE SUBMISSION OF THE BID.

MULCH

MULCH SHALL BE A SHREDDED VARIETY AS SPECIFIED IN THE PLANT LIST. ALL MULCH IS TO BE APPLIED TO A DEPTH OF 3" EXCEPT FOR THOSE SPECIFIC SITUATIONS SHOWN BELOW IN SECTION 4 AND IN PLANTING DETAILS.

FERTILIZER

FERTILIZER IN BACKFILL MIXTURE FOR ALL PLANTS SHALL CONSIST OF 'MILORGANITE' ACTIVATED SLUDGE MIXED WITH THE BACKFILL AT A RATE OF NOT LESS THAN 50 LBS. PER CUBIC YARD.

FERTILIZER FOR TREES AND SHRUBS MAY BE TABLET FORM OR GRANULAR. GRANULAR FERTILIZER SHALL BE UNIFORM IN COMPOSITION, DRY AND FREE FLOWING. THIS FERTILIZER SHALL BE DELIVERED TO THE SITE IN THE ORIGINAL UNOPENED BAGS, EACH BEARING THE MANUFACTURER'S STATEMENT OF ANALYSIS. FERTILIZE ALL NEW PLANTINGS PER RATES SHOWN BELOW.

TREES:

FERTILIZE NEW TREES WITH "MILORGANITE" AT THE FOLLOWING RATES:

- 8" AND SMALLER: 2-4 LBS.
- 8"-12" TALL: 4-6 LBS.
- 12" AND TALLER: 6-8 LBS.

(3 CUPS = 1 LB.)

SHRUBS:

FERTILIZE NEW SHRUBS AND ACCENTS WITH "MILORGANITE" AT THE FOLLOWING RATES:

- 4-6" POTS: 1 CUP
- 1 GALL: 1 CUP
- 3 GALL: 1 CUP
- 7-10 GALL: 2 CUPS
- 15 GALL. AND GREATER: 3 CUPS

PALM TREES:

FERTILIZE NEW PALM TREES WITH A "PALM SPECIAL" FERTILIZER IN SLOW RELEASE FORM. FERTILIZER SHALL CONTAIN AN ADDITIONAL MAGNESIUM AND MICRO NUTRIENT AMENDMENT

SOIL

PLANTING SOIL SHALL BE SANDY LOAM AND SHALL CONTAIN A 25% MINIMUM AMOUNT OF DECOMPOSED ORGANIC MATTER. PLANTING SOIL SHALL BE FREE OF CLAY, STONES, PLANTS, ROOTS AND OTHER FOREIGN MATERIALS WHICH MIGHT BE A HINDRANCE TO PLANTING OPERATIONS OR BE DETRIMENTAL TO GOOD PLANT GROWTH. SOIL SHALL BE DELIVERED IN A LOOSE FIABLE CONDITION AND APPLIED IN ACCORDANCE WITH THE PLANTING SPECIFICATIONS.

ALL SHRUBS, TREES AND GROUND COVER WILL HAVE IMPROVED SOIL AS PER PLANTING SOIL NOTES. THE SOILS SHALL BE PLACED IN THE HOLE DURING PLANTING. TOP DRESSING ONLY IS NOT ACCEPTABLE.

DO NOT ALLOW AIR POCKETS TO FORM WHEN BACKFILLING. ALL TREES SHALL BE SPIKED IN UTILIZING WATER AND A TREE BAR.

WATER

WATER FOR PLANTING WILL BE AVAILABLE AT THE SITE AND WILL BE PROVIDED BY THE OWNER. LANDSCAPE CONTRACTOR SHALL NOT ASSUME THAT THE IRRIGATION SYSTEM WILL BE OPERATIONAL AT THE TIME OF PLANTING. IT IS THE RESPONSIBILITY OF THE LANDSCAPE CONTRACTOR TO PROVIDE ALL THE REQUIRED WATER NECESSARY TO MAINTAIN THE PLANT MATERIAL IN A HEALTHY GROWING CONDITION. THE WATERING MAY INCLUDE DEEP WATERING OF TREES AND THE WATERING OF SHRUB AND GROUND COVER AREAS. ANY PLANT MATERIALS THAT DIE OR THAT ARE NOT IN A HEALTHY GROWING CONDITION DUE TO LACK OF WATER SHALL BE REPLACED BY THE LANDSCAPE CONTRACTOR AT NO ADDITIONAL COST TO THE OWNER.

4. EXECUTION

FIELD GROWN TREES AND PALMS PREVIOUSLY ROOT PRUNED SHALL OBTAIN A ROOT BALL WITH SUFFICIENT ROOTS FOR CONTINUED GROWTH WITHOUT RESULTING SHOCK.

CONTRACTOR SHALL NOT MARK OR SCAR TRUNK IN ANY FASHION.

PLANTS SHALL BE WATERED AS NECESSARY OR WITHIN 24 HOURS AFTER NOTIFICATION BY THE LANDSCAPE ARCHITECT.

THE LOCATIONS OF PLANTS, AS SHOWN IN THESE PLANS, ARE APPROXIMATE. THE FINAL LOCATIONS MAY BE ADJUSTED TO ACCOMMODATE UNDESIRABLE FIELD CONDITIONS. MAJOR ADJUSTMENTS TO THE LAYOUT ARE TO BE APPROVED BY THE LANDSCAPE ARCHITECT.

ALL PLASTIC FABRIC SHALL BE REMOVED FROM PLANT MATERIAL AT TIME OF INSTALLATION.

ALL TREES MUST BE STAKED AS SHOWN ON THE PLANTING DETAILS WITHIN 24 HOURS OF PLANTING. STAKES TO REMAIN FOR A MINIMUM OF 9 MONTHS, BUT NO LONGER THAN 18 MONTHS. CONTRACTOR IS RESPONSIBLE FOR MAINTENANCE AND REMOVAL OF THE STAKES.

ALL TREES MUST BE PRUNED AS PER LANDSCAPE ARCHITECT'S DIRECTION. SABAL PALMS MAY BE HURRICANE CUT.

ALL SHRUBS, TREES AND GROUND COVER WILL HAVE IMPROVED SOIL AS PER PLANTING SOIL NOTES. THE SOILS SHALL BE PLACED IN THE HOLE DURING PLANTING. TOP DRESSING ONLY IS NOT ACCEPTABLE.

DO NOT ALLOW AIR POCKETS TO FORM WHEN BACKFILLING. ALL TREES SHALL BE SPIKED IN UTILIZING WATER AND A TREE BAR.

AFTER FINAL SETTLING OF BALLED AND BURLAPED PLANTS, LOOSEN BURLAP WRAPPING EXPOSING THE TOP OF THE ROOTBALL, LEAVING THE BALL UNBROKEN. REMOVE EXCESS AMOUNTS OF BURLAP TO ELIMINATE VOIDS WHICH MAY BE CAUSED UPON DECOMPOSITION.

CONTAINER GROWN PLANTS SHALL, WHEN DELIVERED, SHALL HAVE SUFFICIENCY GROWTH TO HOLD EARTH INTACT WHEN REMOVED FROM CONTAINER AND SHALL NOT BE ROOT BOUND. PLANT PITS FOR CONTAINER MATERIALS SHALL BE FORMED FLAT ON THE BOTTOM TO AVOID AIR POCKETS AT THE BOTTOM OF ROOT BALLS AND CONTAINERS SHALL BE REMOVED CAREFULLY TO PREVENT DAMAGE TO THE PLANT OR ROOT SYSTEMS.

TEST TREE PITS WITH WATER BEFORE PLANTING TO ASSURE PROPER DRAINAGE PERCOLATION IS AVAILABLE. PITS WHICH ARE FOUND NOT TO BE ADEQUATELY DRAINING SHALL BE EXCAVATED TO A A DEPTH SUFFICIENT FOR DRAINAGE AND BACKFILLING WITH GRAVEL OR CRUSHED ROCK. NO ALLOWANCES WILL BE MADE FOR LOST PLANTS DUE TO IMPROPER DRAINAGE.

PLANTING BED PREPARATION

ALL PLANTING BEDS SHALL BE PROPERLY PREPARED PRIOR TO THE COMMENCEMENT OF ANY PLANTING. PLANTING AREAS, INCLUDING LAWNS SHALL BE FREE OF ALL WEEDS AND NUISANCE VEGETATION. IF TORPEDO GRASS (PANICUM REPENS) IS PRESENT OR ENCOUNTERED DURING PLANTING, THE LANDSCAPE CONTRACTOR SHALL STOP ALL PLANTING UNTIL IT CAN BE DEMONSTRATED THAT IT HAS BEEN COMPLETELY REMOVED OR ERADICATED. THERE SHALL BE NO EXCEPTIONS TO THIS PROVISION.

ALL LANDSCAPE ISLANDS AND BEDS WILL BE FREE OF SHELL ROCK AND CONSTRUCTION DEBRIS AND WILL BE EXCAVATED TO A DEPTH OF 30 INCHES OR TO CLEAN, NATIVE SOIL AND FILLED WITH THE SPECIFIED BACKFILL MIXTURE.

PLANTING TREES

EXCAVATE PIT AS PER PLANTING DETAILS. COMPACT LAYER OF TOPSOIL IN PIT WITH A SLIGHTLY DISHED GRADE TO CENTER.

BACKFILL AROUND BALL WITH TOPSOIL AND SLIGHTLY COMPACT. WATER THOROUGHLY AS LAYERS ARE PLACED TO ELIMINATE VOIDS AND AIR POCKETS. BUILD A 6" HIGH BERM OF TOPSOIL BEYOND EDGE OF EXCAVATION. APPLY 3" (AFTER SETTLEMENT) OF MULCH.

PRUNE TREE TO REMOVE DAMAGED BRANCHES, IMPROVE NATURAL SHAPE AND THIN OUT STRUCTURE. DO NOT REMOVE MORE THAN 15% OF BRANCHES. DO NOT PRUNE BACK TERMINAL LEADER.

GUY AND STAKE TREE IN ACCORDANCE WIT THE STAKING DETAILS IMMEDIATELY AFTER PLANTING.

PLANTING SHRUBS

LAYOUT SHRUBS TO CREATE A CONTINUOUS SMOOTH FRONT LINE AND FILL IN BEHIND.

EXCAVATE PIT OR TRENCH TO 1-1/2 TIMES THE DIAMETER OF THE BALLS OR CONTAINERS OR 1'-0" WIDER THAN THE SPREAD OF ROOTS AND 3" DEEPER THAN REQUIRED FOR POSITIONING AT PROPER HEIGHT. COMPACT A LAYER OF TOPSOIL IN BOTTOM BEFORE PLACING PLANTS. BACKFILL AROUND PLANTS WITH PLANTING MIXTURE, COMPACTED TO ELIMINATE VOIDS AND AIR POCKETS. FORM GRADE SLIGHTLY DISHED AND BERMED AT EDGES OF EXCAVATION. APPLY 3" OF MULCH.

PRUNE SHRUBS TO REMOVE DAMAGED BRANCHES, IMPROVE NATURAL SHAPE AND THIN OUT STRUCTURE. DO NOT REMOVE MORE THAN 15% OF BRANCHES.

PLANTING GROUND COVER

LOOSEN SUBGRADE TO DEPTH OF 4" IN AREAS WHERE TOPSOIL HAS BEEN STRIPPED AND SPREAD SMOOTH.

SPACE PLANTS AS OTHERWISE INDICATED. DIG HOLES LARGE ENOUGH TO ALLOW SPREADING OF ROOTS. COMPACT BACKFILL TO ELIMINATE VOIDS AND LEAVE GRADE SLIGHTLY DISHED AT EACH PLANT. WATER THOROUGHLY. APPLY 3" OF MULCH OVER ENTIRE PLANTING BED. LIFTING PLANT FOLIAGE ABOVE MULCH. PURPLE QUEEN GROUND COVER, IF SPECIFIED, SHALL ONLY RECEIVE 1" OF MULCH.

DURING PERIODS OF HOT SUN AND/OR WIND AT TIME OF PLANTING, PROVIDE PROTECTIVE COVER FOR SEVERAL DAYS OR AS NEEDED.

PLANTING SOD

SODDING: SOD TYPE SPECIFIED ON PLANT LIST SHALL BE MACHINE STRIPPED NOT MORE THAN 24 HOURS PRIOR TO LAYING. SOD SHALL BE FIRM, TOUGH TEXTURE, HAVING A COMPACT GROWTH OF GRASS WITH GOOD ROOT DEVELOPMENT, AND SHALL CONTAIN NO BERMUDA GRASS, WEEDS OR ANY OTHER OBJECTIONABLE VEGETATION.

LOOSEN SUBGRADE TO DEPTH OF 4" AND GRADE WITH TOPSOIL EITHER PROVIDED ON SITE OR IMPORTED TO FINISH DESIGN ELEVATIONS. IT SHALL BE THE RESPONSIBILITY OF THE LANDSCAPE CONTRACTOR TO FINISH GRADE ALL LANDSCAPE AREAS, ELIMINATING ALL BUMPS, DEPRESSIONS, STICKS, STONES AND OTHER DEBRIS. ROLL PREPARED LAWN SURFACE. WATER THOROUGHLY, BUT DO NOT CREATE MUDDY SOIL CONDITION.

FERTILIZE SOIL AT THE RATE OF APPROXIMATELY 10 LBS. PER 1,000 S.F. SPREAD FERTILIZER OVER THE AREA TO RECEIVE GRASS BY USING AN APPROVED DISTRIBUTION DEVICE CALIBRATED TO DISTRIBUTE THE APPROPRIATE QUANTITY. DO NOT FERTILIZE WHEN WIND VELOCITY EXCEEDS 15 M.P.H. THOROUGHLY MIX FERTILIZER INTO THE TOP 2" OF TOPSOIL.

LAY SOD STRIPS WITH TIGHT JOINTS, DO NOT OVERLAP, STAGGER STRIPS TO OFFSET JOINTS IN ADJACENT COURSES. WORK SIFTED SOIL MIX INTO MINOR CRACKS BETWEEN PIECES OF SOD AND REMOVE EXCESS SOIL DEPOSITS FROM SODDED AREAS. SOD ON SLOPES GREATER THAN 3:1 SHALL BE STAKED IN PLACE. ROLL OR STAMP LIGHTLY AND WATER THOROUGHLY WITH A FINE SPRAY IMMEDIATELY AFTER PLANTING.

5. MISCELLANEOUS LANDSCAPE WORK

LANDSCAPE MAINTENANCE

MAINTAIN LANDSCAPE WORK IMMEDIATELY AFTER PLANTING AND UNTIL FINAL ACCEPTANCE IS ISSUED BY THE OWNER'S REPRESENTATIVE. INCLUDE WATERING, WEEDING, CULTIVATING, RESTORATION OF GRADE, MOWING AND TRIMMING GRASS, PRUNING TREES AND SHRUBS, PROTECTION FROM INSECTS AND DISEASES, FERTILIZING AND SIMILAR OPERATIONS AS NEEDED TO INSURE NORMAL GROWTH AND GOOD HEALTH FOR LIVE PLANT MATERIAL. SETTLED PLANTS SHALL BE RESET TO PROPER GRADE, PLANTING SAUCERS RESTORED, AND DEFECTIVE WORK CORRECTED.

IN THE EVENT OF SERIOUS DAMAGE FROM INSECTS OR DISEASE PRIOR TO FINAL ACCEPTANCE, THE PLANTS SHALL BE TREATED BY PREVENTATIVE OR REMEDIAL MEASURES APPROVED FOR GOOD HORTICULTURAL PRACTICE AT NO ADDITIONAL COST TO THE OWNER.

CLEAN UP

THE LANDSCAPE CONTRACTOR SHALL AT ALL TIMES KEEP THE PREMISES FREE FROM ACCUMULATION OF WASTE MATERIALS OR DEBRIS CAUSED BY HIS CREWS DURING THE PERFORMANCE OF THE WORK. UPON COMPLETION OF THE WORK, THE CONTRACTOR SHALL PROMPTLY REMOVE ALL WASTE MATERIALS, DEBRIS, UNUSED PLANT MATERIAL, EMPTY PLANT CONTAINERS AND ALL EQUIPMENT FROM THE PROJECT SITE.

ANY SOIL, PEAT OR SIMILAR MATERIAL WHICH HAS BEEN BROUGHT ONTO ANY PAVED AREAS SHALL BE REMOVED PROMPTLY KEEPING THESE AREAS CLEAN AS THE WORK PROGRESSES. UPON COMPLETION OF THE PLANTING, ALL EXCESS SOIL, STONES AND DEBRIS WHICH HAS NOT BEEN PREVIOUSLY CLEANED UP SHALL BE REMOVED FROM THE SITE.

INSPECTION & ACCEPTANCE

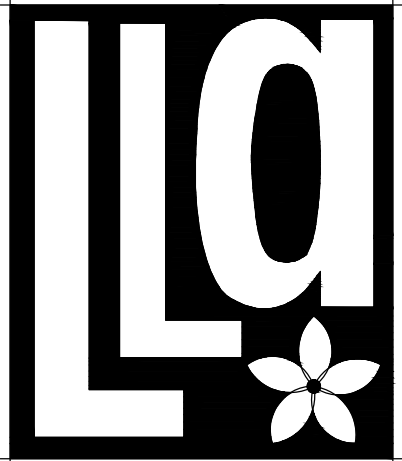
THE LANDSCAPE CONTRACTOR SHALL NOTIFY THE LANDSCAPE ARCHITECT UPON COMPLETION OF THE WORK TO REQUEST A FINAL INSPECTION OF THE INSTALLATION AND PLANT MATERIALS. THE LANDSCAPE ARCHITECT OR THE OWNER'S REPRESENTATIVE WILL NOTIFY THE LANDSCAPE CONTRACTOR OF ANY DEFICIENCIES VIA A "PINCH LIST" WHICH SHALL BE PROMPTLY CORRECTED BY THE LANDSCAPE CONTRACTOR. CONDITIONAL LANDSCAPE ACCEPTANCE OF ALL PLANT MATERIAL AND WORKMANSHIP WILL BE GIVEN IN WRITING BY THE LANDSCAPE ARCHITECT AFTER ALL "PINCH LIST" ITEMS HAVE BEEN CORRECTED AND ANY PLANT REPLACEMENTS MADE. THIS ACCEPTANCE WILL BEGIN THE WARRANTY PERIOD. DEFICIENCIES NOTED AFTER THE CONDITIONAL LANDSCAPE ACCEPTANCE SHALL BE RECTIFIED DURING THE WARRANTY PERIOD AND PRIOR TO FINAL LANDSCAPE ACCEPTANCE.

GUARANTEE AND REPLACEMENT

ALL PLANT MATERIAL AND WORKMANSHIP SHALL BE GUARANTEED BY THE LANDSCAPE CONTRACTOR FOR A PERIOD OF SIX (6) MONTHS FROM THE DATE OF CONDITIONAL LANDSCAPE ACCEPTANCE BY THE LANDSCAPE ARCHITECT. ANY PLANT MATERIAL OR WORKMANSHIP THAT IS DEFICIENT OR HAS DIED SHALL BE REPLACED AT THE SAME SPECIFICATION NOTED IN THE APPROVED LANDSCAPE PLANS. REPLACEMENTS SHALL BE MADE BY THE LANDSCAPE CONTRACTOR WITHIN TWO (2) WEEKS OF NOTIFICATION BY THE LANDSCAPE ARCHITECT OR OWNER'S REPRESENTATIVE AT NO ADDITIONAL COST TO THE OWNER. WARRANTIES OF REPLACEMENT MATERIAL SHALL BE SIX (6) MONTHS FROM THE DATE OF REPLACEMENT INSTALLATION. DEATH OR DAMAGE RESULTING FROM LIGHTNING, VANDALISM OR AUTOMOBILES OR BY NEGLIGENCE BY THE OWNER SHALL NOT BE THE RESPONSIBILITY OF THE LANDSCAPE CONTRACTOR. UNLESS OTHERWISE ARRANGED WITH THE OWNER, THE CONTRACTOR IS RESPONSIBLE FOR GENERAL PLANT MAINTENANCE INCLUDING WATERING AND MOWING UP UNTIL THE DATE OF CONDITIONAL ACCEPTANCE.

PLANT MATERIAL SUBSTITUTION

THERE WILL BE NO SUBSTITUTION OF PLANT MATERIAL UNLESS AUTHORIZED BY THE LANDSCAPE ARCHITECT AND/OR OWNER. THIS INCLUDES SPECIES AND SIZE OF PLANT MATERIAL.



Litterick Landscape Architecture

2740 SW Martin Downs Blvd. #199
Palm City, FL 34990
561-719-3876
jason.l1677@yahoo.com

Project Name

Farrell Wellington - Estates West

Wellington, Florida

Landscape Architect of Record



Jason M. Litterick, RLA
(LA0001677)

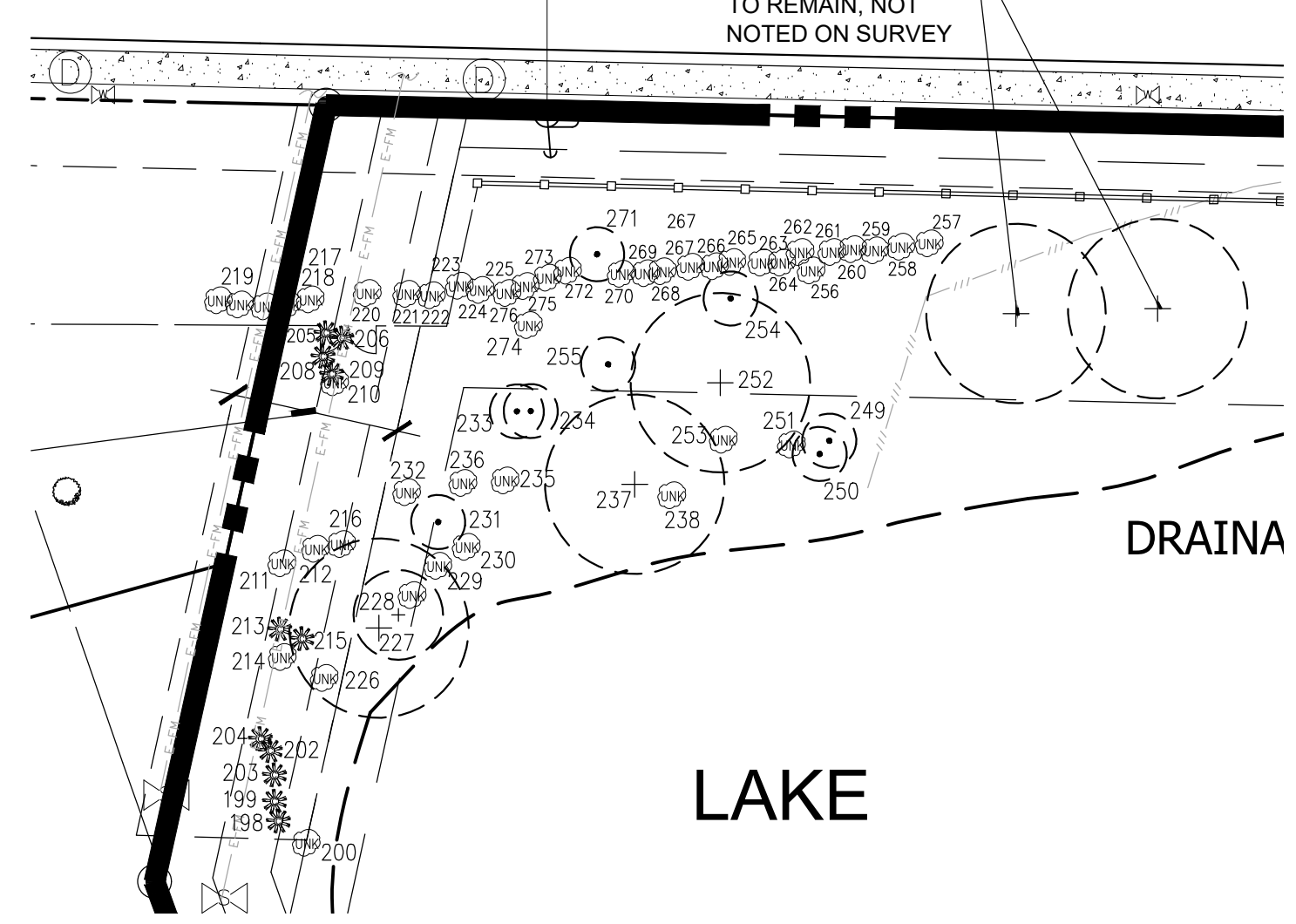
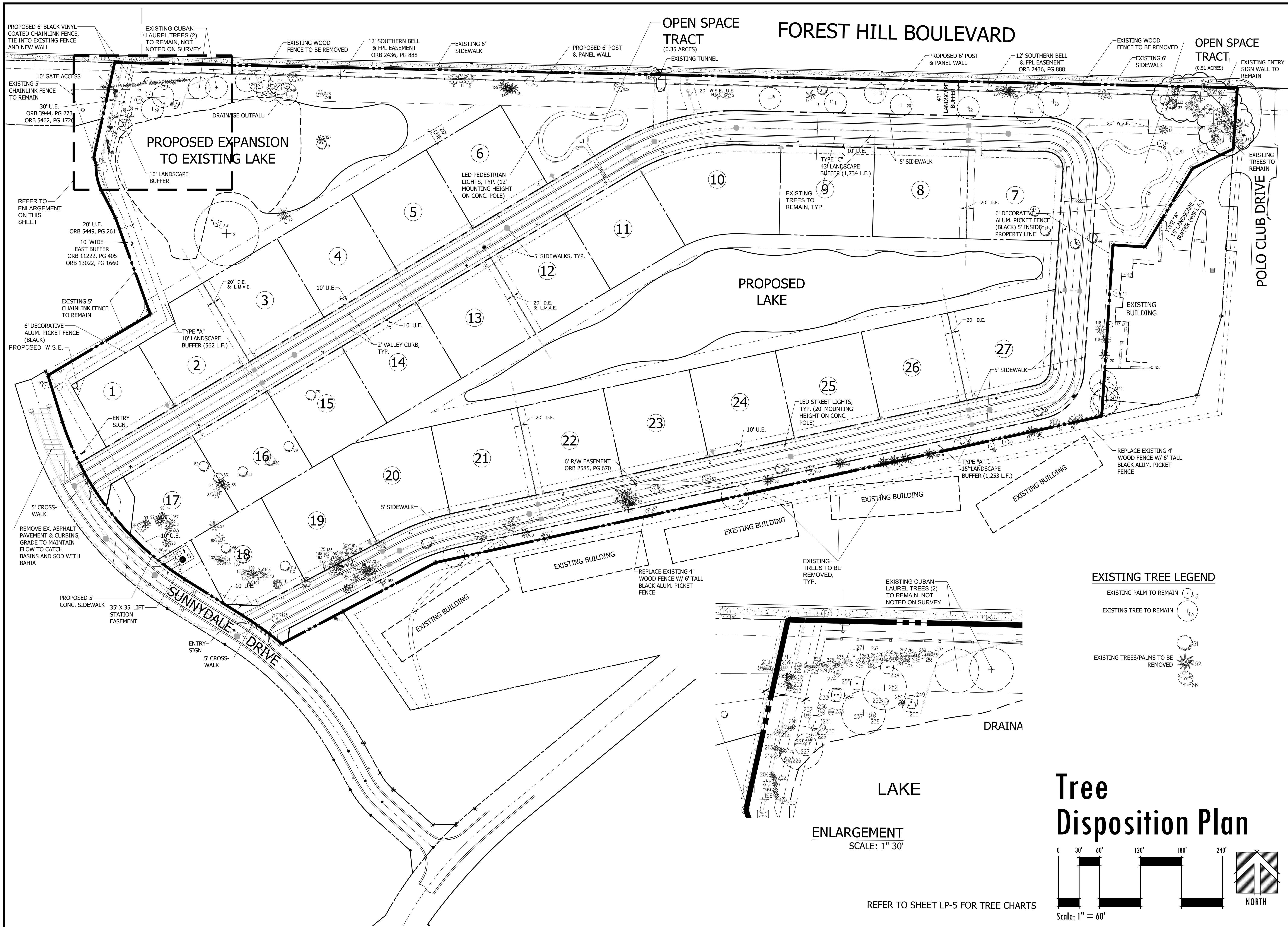
Scale: Not to Scale

Designed: JML
Drawn: JML
Approved: JML
Date: 7/1/22
Job no.
Revisions: 11/11/22
2/22/23

Sheet No.

LP-3

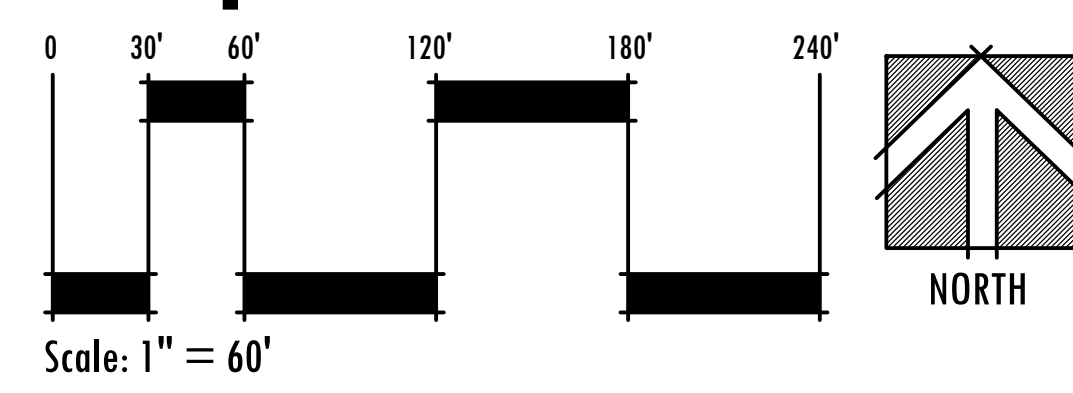
Landscape Planting Details & Specifications



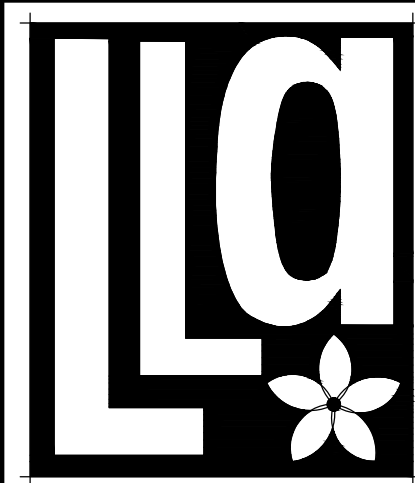
EXISTING TREE LEGEND

- EXISTING PALM TO REMAIN
- EXISTING TREE TO REMAIN
- EXISTING TREES/PALMS TO BE REMOVED

Tree Disposition Plan



REFER TO SHEET LP-5 FOR TREE CHARTS



Litterick Landscape Architecture

2740 SW Martin Downs Blvd. #199
Palm City, FL 34990
561-719-3876
Jason.LA1677@yahoo.com

Project Name

Farrell Wellington - Estates West

Wellington, Florida

Landscape Architect of Record



Jason M. Litterick, RLA (LA0001677)

Scale: 1" = 60'-0"

Designed:	JML
Drawn:	JML
Approved:	JML
Date:	7/1/22
Job no.	
Revisions:	11/11/22 2/22/23

Sheet No.

LP-4

Tree Table

Tree No.	Species	Diameter	Status	Mitigation Required
1	Washington Palm	14"	Preserve	
2	Cuban Laurel	60"	Preserve	
3	Cabbage Palm	12"	Preserve	
4	Cabbage Palm	8"	Preserve	
5	Plantain	4"	Previously Removed	None
6	Plantain	4"	Previously Removed	None
7	Plantain	4"	Previously Removed	None
8	Plantain	4"	Previously Removed	None
9	Black Olive	30"	Remove	None
10	Ornamental	20"	Remove	None
11	Ornamental	14"	Remove	None
12	Ornamental	24"	Remove	None
13	Loquat	6"	Remove	None
14	Bald Cypress	24"	Previously Removed	None
15	Bald Cypress	18"	Previously Removed	None
16	Live Oak	16"	Preserve	
17	Acacia	60"	Remove	None
18	Silk Oak	18"	Remove	None
19	Live Oak	26"	Preserve	
20	Mahogany	26"	Preserve	
21	Mahogany	18"	Preserve	
22	Mahogany	20"	Preserve	
23	Coconut Palm	8"	Remove	None
24	Areca Palm	20"	Remove	None
25	Areca Palm	20"	Remove	None
26	Coconut Palm	10"	Remove	None
27	Ficus Benjamina	40"	Preserve	
28	Ficus Benjamina	54"	Preserve	
29	Coconut Palm	8"	Remove	None
30	Oak	32"	Preserve	
31	Oak	32"	Previously Removed	None
32	Queen Palm	10"	Remove	None
33	Queen Palm	10"	Remove	None
34	Ficus Benjamina	40"	Preserve	
35	Ficus Benjamina	36"	Preserve	
36	Ficus Benjamina	60"	Preserve	
37	Coconut Palm	8"	Preserve	
38	Laurel Oak	24"	Preserve	
39	Ficus Benjamina	36"	Preserve	
40	Ficus Benjamina	48"	Preserve	
41	Cabbage Palm	12"	Preserve	
42	Cabbage Palm	12"	Preserve	
43	Cabbage Palm	12"	Remove	None
44	Oak	14"	Remove	One Non-Specimen Tree
45	Oak	24"	Remove	Two Non-Specimen Trees
46	Oak	24"	Remove	Two Non-Specimen Trees
47	Oak	26"	Remove	Two Non-Specimen Trees
48	MAHOGANY	24"	Remove	One Non-Specimen Tree
49	ARECA PALM	30"	Remove	None
50	YELLOW TABERBUA	16"	Remove	One Non-Specimen Tree
51	Bald Cypress	12"	Remove	One Non-Specimen Tree
52	ARECA PALM	50"	Remove	None
53	Ficus Benjamina	20"	Remove	None
54	Eucalyptus	24"	Remove	None
55	Queen Palm	10"	Remove	None
56	Pygmy Palm	4"-3	Remove	None
57	Hibiscus	4"	Remove	None
58	ARECA PALM	48"	Remove	None
59	ARECA PALM	60"	Preserve	
60	ARECA PALM	42"	Preserve	
61	ARECA PALM	42"	Remove	None
62	ARECA PALM	36"	Remove	None
63	ARECA PALM	42"	Remove	None
64	ARECA PALM	48"	Remove	None
65	ARECA PALM	60"	Remove	None
66	YELLOW TABERBUA	10"	Preserve	
67	Hibiscus	4"	Remove	None
68	Cabbage Palm	10"	Remove	None
69	Bottlebrush	16"	Remove	None
70	Cabbage Palm	8"	Remove	None
71	Bottlebrush	12"	Remove	None
72	Bichoffia	20"	Remove	None
73	Cabbage Palm	8"	Remove	None
74	Cuban Laurel	36"	Preserve	
75	Oak	18"	Remove	One Non-Specimen Tree
76	Eucalyptus	32"	Remove	None
77	Cypress	16"	Remove	None
78	YELLOW TABERBUA	14"	Remove	None
79	Live Oak	20"	Previously Removed	None
80	Live Oak	26"	Remove	Two Non-Specimen Trees
81	Live Oak	26"	Remove	Two Non-Specimen Trees
82	Live Oak	18"	Remove	One Non-Specimen Tree
83	Laurel Oak	24"	Remove	Two Non-Specimen Trees
84	Cuban Laurel	26"	Remove	None
85	Queen Palm	8"	Remove	None
86	Cabbage Palm	18"	Remove	None
87	Jacaranda	20"	Remove	None
88	Queen Palm	8"	Remove	None
89	Queen Palm	10"	Remove	None
90	Cabbage Palm	16"	Remove	None
91	Cabbage Palm	10"	Remove	None
92	Cabbage Palm	16"	Remove	None

Tree Table (Cont.)

Tree No.	Species	Diameter	Status	Mitigation Required
93	Cabbage Palm	10"	Remove	None
94	Walnut	20"	Remove	None
95	Cabbage Palm	8"	Remove	None
96	Pine	12"	Remove	None
97	Queen Palm	10"	Remove	One Non-Specimen Tree
98	Queen Palm	8"	Remove	None
99	Oak	22"	Remove	Two Non-Specimen Trees
100	Cypress	12"	Remove	One Non-Specimen Tree
101	Cypress	12"	Remove	One Non-Specimen Tree
102	Cypress	16"	Remove	Two Non-Specimen Trees
103	Oak	22"	Remove	Two Non-Specimen Trees
104	Cypress	10"	Remove	One Non-Specimen Tree
105	Cypress	10"	Remove	One Non-Specimen Tree
106	Cabbage Palm	16"	Remove	None
107	Cypress	12"	Remove	One Non-Specimen Tree
108	Cypress	16"	Remove	Two Non-Specimen Trees
109	Cypress	10"	Remove	One Non-Specimen Tree
110	Cypress	14"	Remove	Two Non-Specimen Trees
111	Cuban Laurel	120"	Remove	None
112	STCAMORE	14"	Remove	One Non-Specimen Tree
113	Ornamental	8"-3	Remove	None
114	Ornamental	8"-6	Remove	None
115	Left Blank	Blank		None
116	Queen Palm	10"	Preserve	
117	Queen Palm	10"	Preserve	
118	Bottlebrush	24"	Remove	None
119	Bottlebrush	24"	Remove	None
120	Bottlebrush	10"	Remove	None
121	Oak	34"	Preserve	
122	Oak	26"	Preserve	
123	Cuban Laurel	48"	Preserve	
124	Oak	24"	Preserve	
125	MAHOGANY	28"	Remove	Two Non-Specimen Trees
126	Ornamental	48"	Preserve	
127	Cabbage Palm	10"	Remove	None
128	Metaleuca	60"	Remove	None
129	ARECA PALM	18"	Remove	None
130	ARECA PALM	24"	Remove	None
131	ARECA PALM	24"	Remove	None
132	Carrotwood	18"	Remove	None
133	COCONUT PALM	8"	Preserve	
134	Pygmy Palm	6"	Preserve	
135	Pygmy Palm	6"	Preserve	
136	Pygmy Palm	6"	Preserve	
137	Pygmy Palm	6"	Preserve	
138	Pygmy Palm	6"	Preserve	
139	Pygmy Palm	6"	Preserve	
140	Ornamental	8"	Preserve	
141	COCONUT PALM	6"	Preserve	
142	COCONUT PALM	8"	Preserve	
143	COCONUT PALM	8"	Preserve	
144	Pygmy Palm	4"	Preserve	
145	ALEXANDER PALM	36"	Preserve	
146	ALEXANDER PALM	24"	Preserve	
147	Queen Palm	8"	Preserve	
148	Live Oak	4"	Remove	One Non-Specimen Tree
149	Cabbage Palm	18"	Remove	None
150	Cabbage Palm	16"	Remove	None
151	DATE PALM	14"	Remove	None
152	PINE	24"	Remove	Two Non-Specimen Trees
153	DATE PALM	6"	Remove	None
154	DATE PALM	6"	Remove	None
155	DATE PALM	6"	Remove	None
156	DATE PALM	6"	Remove	None
157	DATE PALM	6"	Remove	None
158	DATE PALM	6"	Remove	None
159	DATE PALM	8"	Remove	None
160	DATE PALM	8"	Remove	None
161	DATE PALM	6"	Remove	None
162	DATE PALM	6"	Remove	None
163	CYRESS	12"	Remove	One Non-Specimen Tree
164	CYRESS	10"	Remove	One Non-Specimen Tree
165	DATE PALM	10"	Remove	None
166	CABAGE PALM	16"	Remove	None
167	CYRESS	14"	Remove	Two Non-Specimen Trees
168	CYRESS	10"	Remove	One Non-Specimen Tree
169	CYRESS	12"	Remove	One Non-Specimen Tree
170	CYRESS	10"	Remove	One Non-Specimen Tree
171	CYRESS	16"	Remove	Two Non-Specimen Trees
172	CUBAN LAUREL	42"	Remove	None
173	CYRESS	12"	Remove	One Non-Specimen Tree
174	CABAGE PALM	18"	Remove	None
175	CYRESS	18"	Remove	Two Non-Specimen Trees
176	CYRESS	12"	Remove	One Non-Specimen Tree
177	ORNAMENTAL	6"	Remove	None
178	CYRESS	30"	Remove	Two Non-Specimen Trees
179	CYRESS	14"	Remove	Two Non-Specimen Trees
180	CYRESS	12"	Remove	One Non-Specimen Tree
181	CYRESS	20"	Remove	Two Non-Specimen Trees
182	ORNAMENTAL	8"	Remove	None
183	ORNAMENTAL	8"	Remove	None
184	ORNAMENTAL	6"	Remove	None

Tree Table (Cont.)

Tree No.	Species	Diameter	Status	Mitigation Required
185	ARECA PALM	12"	Remove	None
186	CYRESS	12"	Remove	One Non-Specimen Tree
187	CYRESS	18"	Remove	Two Non-Specimen Trees
188	CYRESS	14"	Remove	Two Non-Specimen Trees
189	ORNAMENTAL	6"	Remove	None
190	ORNAMENTAL	12"	Remove	None
191	ORNAMENTAL	12"	Remove	None
192	ORNAMENTAL	6"	Remove	None
193	ORNAMENTAL	6"	Remove	None
194	ORNAMENTAL	10"	Remove	None
195	ORNAMENTAL	6"	Remove	None
196	ORNAMENTAL	8"	Remove	None
197	WASHINGTON PALM	14"	Preserve	
198	CHINESE FAN PALM	14"	Remove	None
199	CHINESE FAN PALM	12"	Remove	None
200	Brazilian Pepper	6"-3	Remove	None
201	Left Blank	Blank		None
202	CHINESE FAN PALM	6"	Remove	None
203	CHINESE FAN PALM	6"	Remove	None
204	CHINESE FAN PALM	14"	Remove	None
205	CHINESE FAN PALM	12"	Remove	None
206	CHINESE FAN PALM	10"	Remove	None
207	CHINESE FAN PALM	10"	Remove	None
208	CHINESE FAN PALM	10"	Remove	None
209	CHINESE FAN PALM	12"	Remove	None
210	Brazilian Pepper	10"	Remove	None
211	Brazilian Pepper	22"	Remove	None
212	Brazilian Pepper	12"	Remove	None
213	CHINESE FAN PALM	10"	Remove	None
214	Brazilian Pepper	5"-4	Remove	None
215	CHINESE FAN PALM	10"	Remove	None
216	Brazilian Pepper	3"-7	Remove	None
217	LIGUSTRUM	6"	Remove	None
218	LIGUSTRUM	6"	Remove	None
219	LIGUSTRUM	6"	Remove	None
220	LIGUSTRUM	6"	Remove	None
221	LIGUSTRUM	6"	Remove	None
222	LIGUSTRUM	6"	Remove	None
223	LIGUSTRUM	6"	Remove	None
224	LIGUSTRUM	6"	Remove	None
225	LIGUSTRUM	6"	Remove	None
226	UNKNOWN	18"	Remove	None
227	BLACK OLIVE	26"	Preserve	
228	BLACK OLIVE	14"	Preserve	
229	Brazilian Pepper	4"	Remove	None
230	Brazilian Pepper	3"-10	Remove	None
231	CABAGE PALM	8"	Preserve	
232	Brazilian Pepper	4"	Remove	None
233	CABAGE PALM	12"	Preserve	
234	CABAGE PALM	6"	Preserve	
235	ACACIA	8"	Remove	None
236	Brazilian Pepper	4"	Remove	None
237	BLACK OLIVE	30"	Preserve	
238	BICHOFFIA	36"	Remove	None
239	CUBAN LAUREL	36"	Preserve	
240	CUBAN LAUREL	30"	Preserve	
241	CABAGE PALM	6"	Preserve	
242	BLACK OLIVE	6"	Preserve	
243	Brazilian Pepper	4"	Remove	None
244	CUBAN LAUREL	24"	Preserve	
245	UNKNOWN	6"	Remove	None
246	BLACK OLIVE	6"	Preserve	
247	UNKNOWN	40"	Remove	None
248	METALEUCA	60"	Remove	None
249	CABAGE PALM	10"	Preserve	
250	CABAGE PALM	10"	Preserve	
251	Brazilian Pepper	6"-14	Remove	None
252	CUBAN LAUREL	30"	Preserve	
253	ACACIA	12"	Remove	None
254	CABAGE PALM	18"	Preserve	
255	CABAGE PALM	12"	Preserve	
256	UNKNOWN	12"	Remove	None
257	LIGUSTRUM	6"	Remove	None
258	LIGUSTRUM	6"	Remove	None
259	LIGUSTRUM	6"	Remove	None
260	LIGUSTRUM	6"	Remove	None
261	LIGUSTRUM	6"	Remove	None
262	LIGUSTRUM	6"	Remove	None
263	LIGUSTRUM	6"	Remove	None
264	LIGUSTRUM	6"	Remove	None
265	LIGUSTRUM	6"	Remove	None
266	LIGUSTRUM	6"	Remove	None
267	LIGUSTRUM	6"	Remove	None
268	LIGUSTRUM	6"	Remove	None
269	LIGUSTRUM	6"	Remove	None
270	LIGUSTRUM	6"	Remove	None
271	CABAGE PALM	24"	Preserve	
272	LIGUSTRUM	6"	Remove	None
273	LIGUSTRUM	6"	Remove	None
274	UNKNOWN	18"	Remove	None
275	LIGUSTRUM	6"	Remove	None
276	LIGUSTRUM	6"	Remove	None

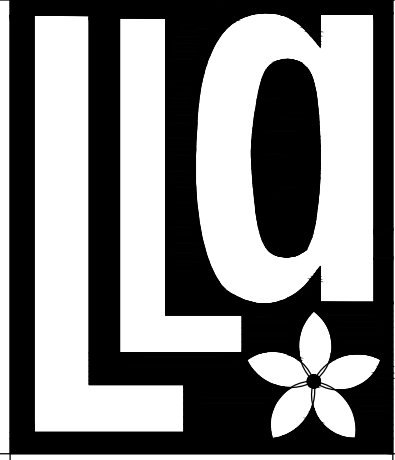
TOTAL MITIGATION REQUIRED: 68- NON-SPECIMEN TREES

MITIGATION PROVIDED: Proposed Live Oak and Cypress Trees (14" O.A.) located within the proposed Open Space Tracts and around perimeter of lake shall be considered mitigation for Specimen and Non-specimen trees removed.

Bald Cypress - 59 Trees (10' -14' Tall)

Live Oak - 12 Trees (14' Tall)

Total Mitigation Trees provided: 71 Trees



Litterick Landscape Architecture

2740 SW Martin Downs Blvd. #199
Palm City, FL 34990
561-719-3876
jasonl1677@yahoo.com

Project Name

Farrell Wellington - Estates West
Wellington, Florida

Landscape Architect of Record



Jason M. Litterick, RLA
(LA0001677)

Scale: Not to Scale

Designed: JML
Drawn: JML
Approved: JML
Date: 7/1/22
Job no.
Revisions: 11/11/22
2/22/23

Sheet No.

LP-5

REFER TO SHEET LP-4 FOR TREE SURVEY

Tree Status Chart