



Palm Beach County Future Land Use

- Commercial
- Institutional
- Rural Residential



State Road 80

Southern Blvd

Legend

- Municipal Boundaries
- Equestrian Preserve Area

Residential

Category	Code	Description
Low Density	A	1 d.u./10 acre
	B	0.1 d.u./acre - 1.0 d.u./acre
	C	1.0 d.u./acre - 3.0 d.u./acre
Medium Density	D	2.0 d.u./acre - 5.0 d.u./acre
	E	3.0 d.u./acre - 8.0 d.u./acre
	F	5.0 d.u./acre - 12.0 d.u./acre
High Density	G	5.0 d.u./acre - 18.0 d.u./acre
	H	5.0 d.u./acre - 22.0 d.u./acre

Commercial

- Commercial
- Equestrian Commercial Recreation
- Open Space Recreation

Mixed Use

- Mixed Use
- Regional Commercial / LSMU

Flex

- Flex

Community Facility

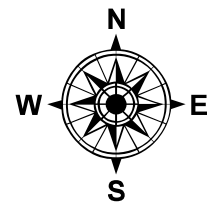
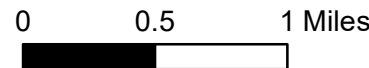
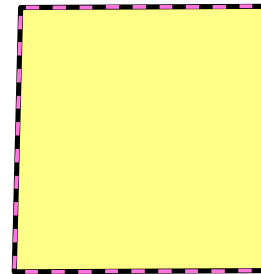
- Community Facilities

Parks & Preserves

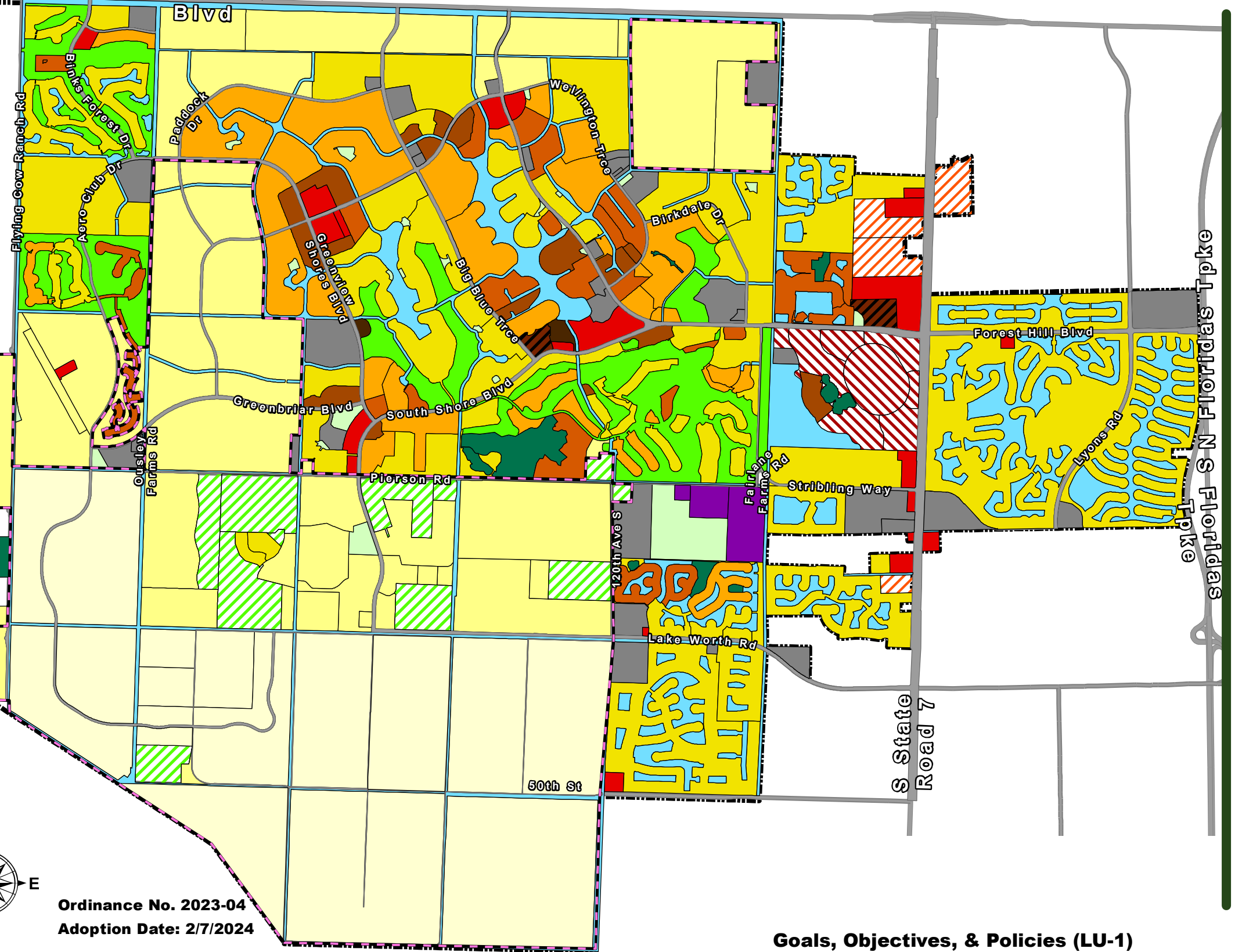
- Park
- Conservation

- Major Water Bodies

Stormwater Treatment Area



Ordinance No. 2023-04  
Adoption Date: 2/7/2024



Goals, Objectives, & Policies (LU-1)