



C-23 Bridle Trail & Multiuse Path Project

Council May 27, 2014

Equestrian Preserve Committee – July 9, 2014



Purpose

- 1) C-23 Canal Right-of-Way IS an Existing Bridle Trail w/ NO Crossing at Palm Beach Point Boulevard. This Project Provides a Safe Crossing.
- 2) There is NO Bridle Trail Connecting to the Wellington Environmental Preserve (Section 24). This Project Provides the Connectivity.
- 3) There is NO Multiuse Path Connectivity to the Wellington Environmental Preserve Allowing for Bicycle & Pedestrian Use and ADA Access. This Project Provides for the Connectivity and is a KEY Requirement of an Existing FDOT LAP Grant (\$750K) for a Trail Along Flying Cow Road.

Location Map

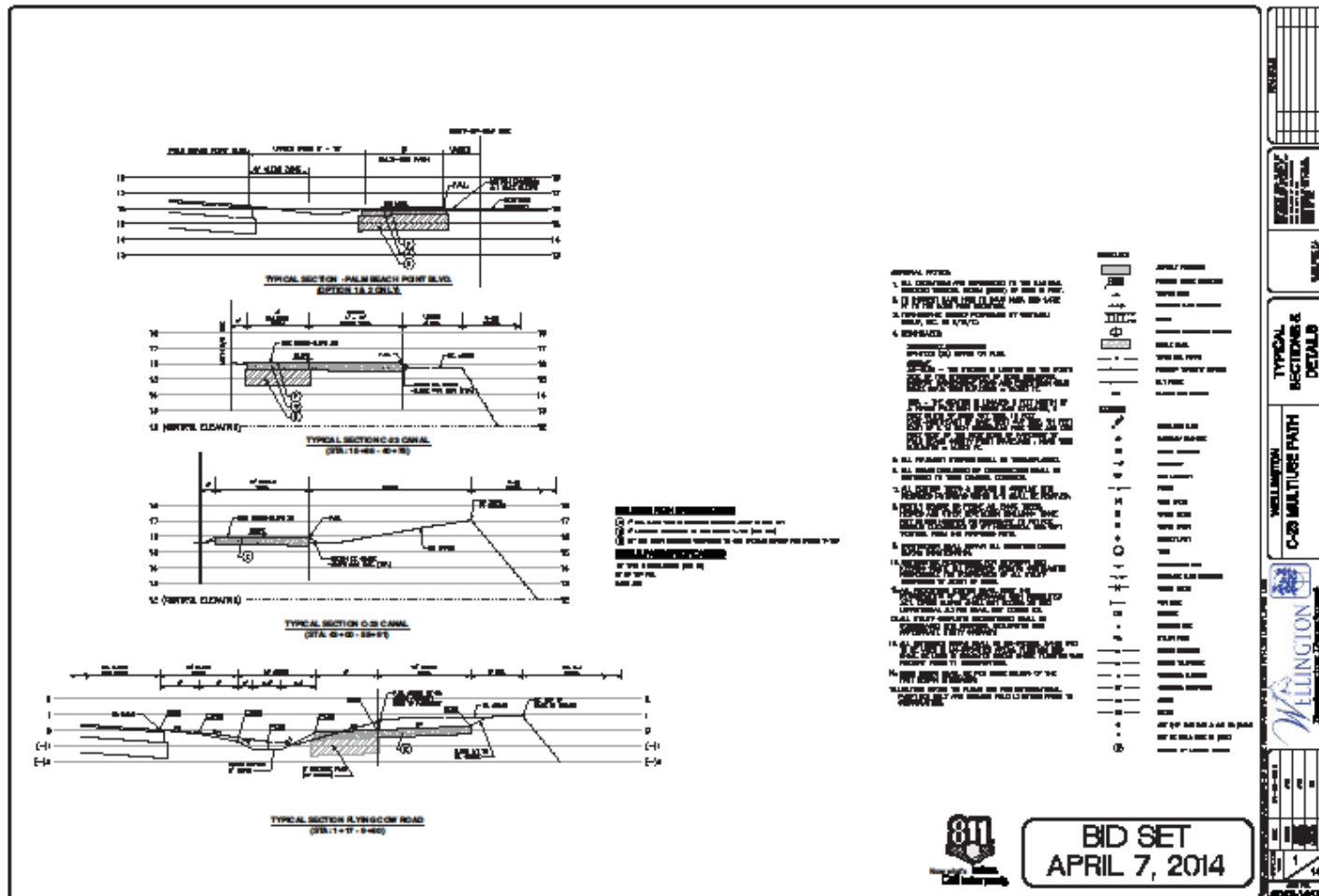
EXHIBIT A – LOCATION MAP FOR C-23 BRIDLE TRAIL AND MULTIUSE PATH PROJECT



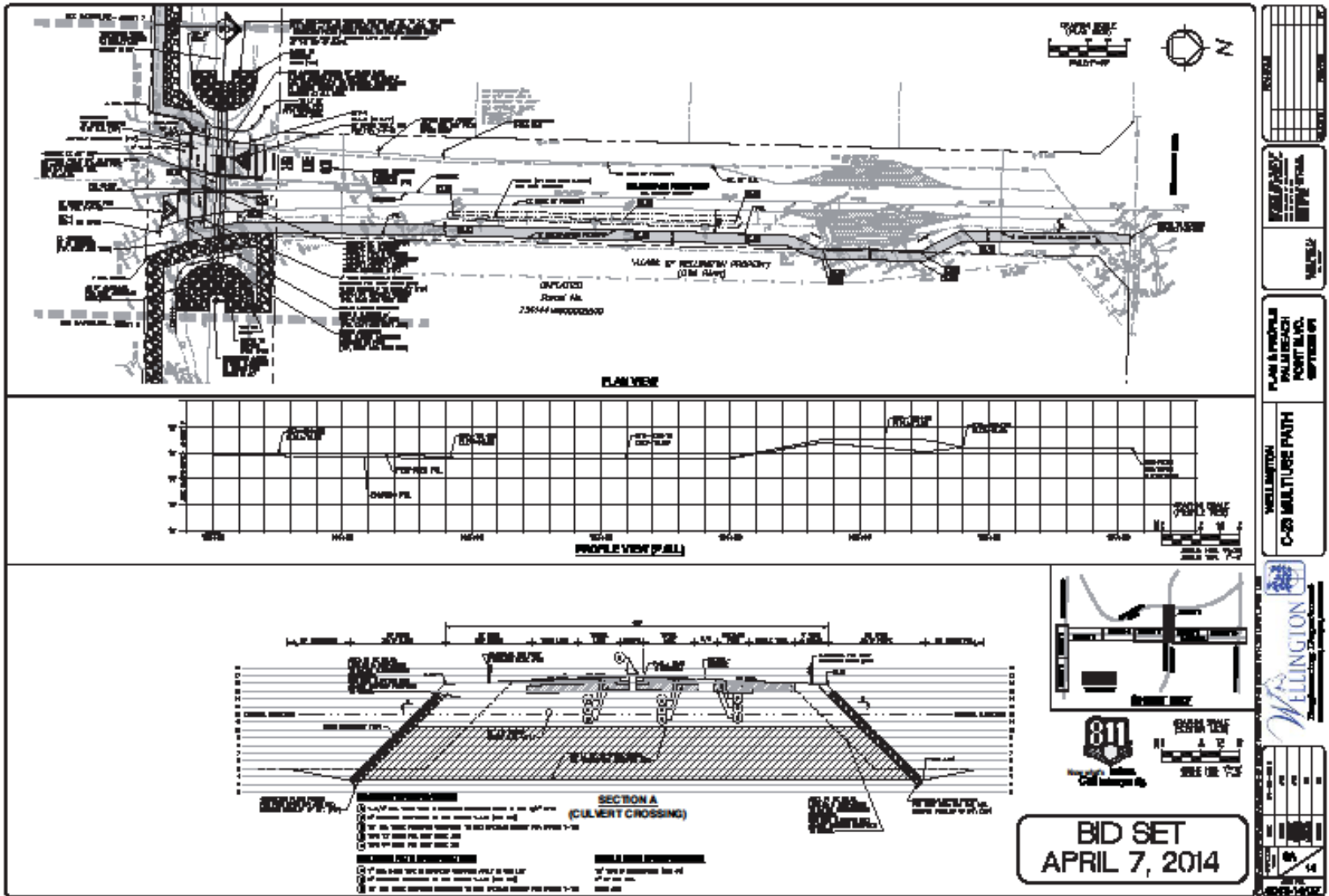
Budget Allocation = \$575,000

Typical Sections

- 8 ft. Wide Asphalt Multiuse Path
- 10 – 15 ft. Wide Grassed & Shellrock Bridle Trail (Stabilized Base)
- 3 Rail Wood Fences Along Palm Beach Point Blvd.



Palm Beach Point Crossing – Option #1



Cost = \$335,321; \$575,268

Palm Beach Point Crossing – Option #1

PROS

Lowest Cost

Most Direct Path

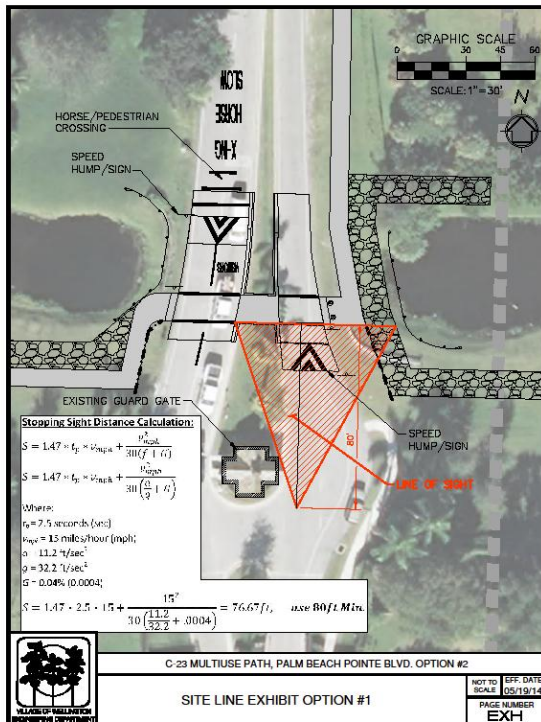
Least Disruptive Construction

CONS

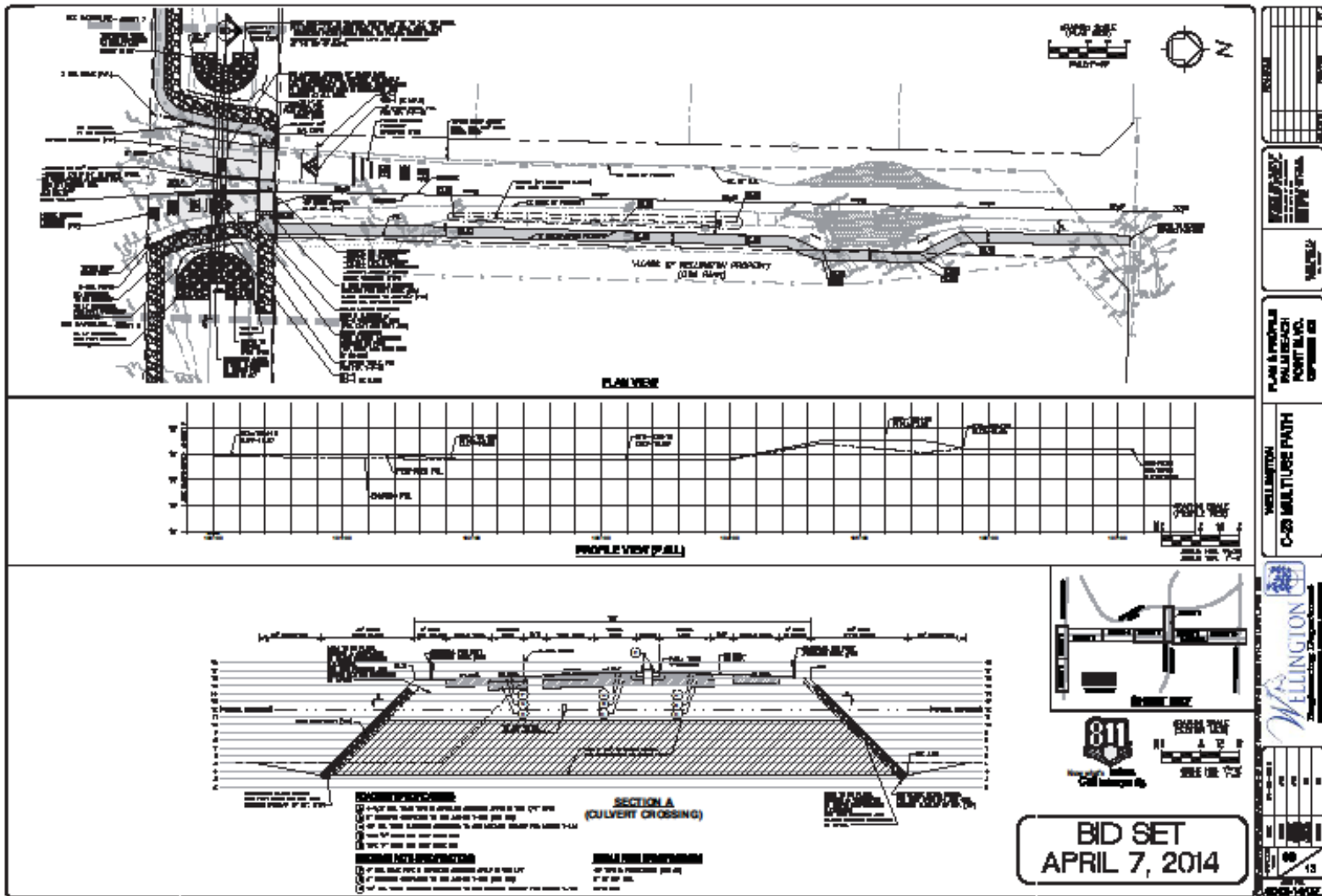
Close to Gate House

Limited Site Distance

HOA Dislikes



Palm Beach Point Crossing – Option #2



Cost = \$343,475; \$583,422

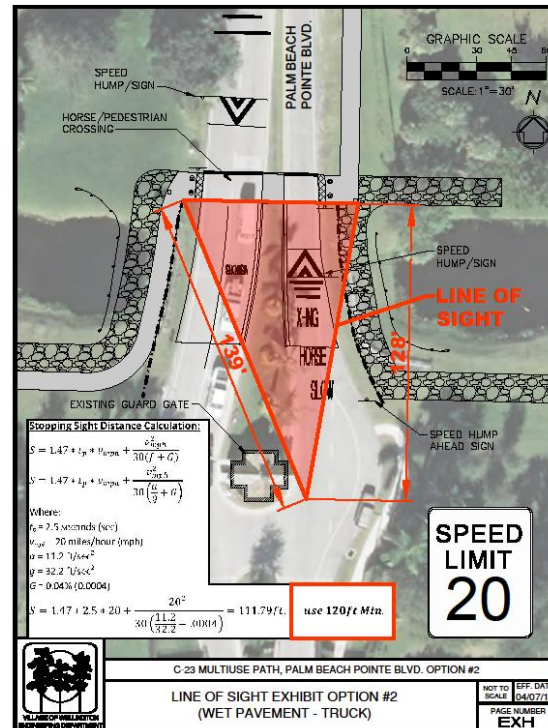
Palm Beach Point Crossing – Option #2

PROS

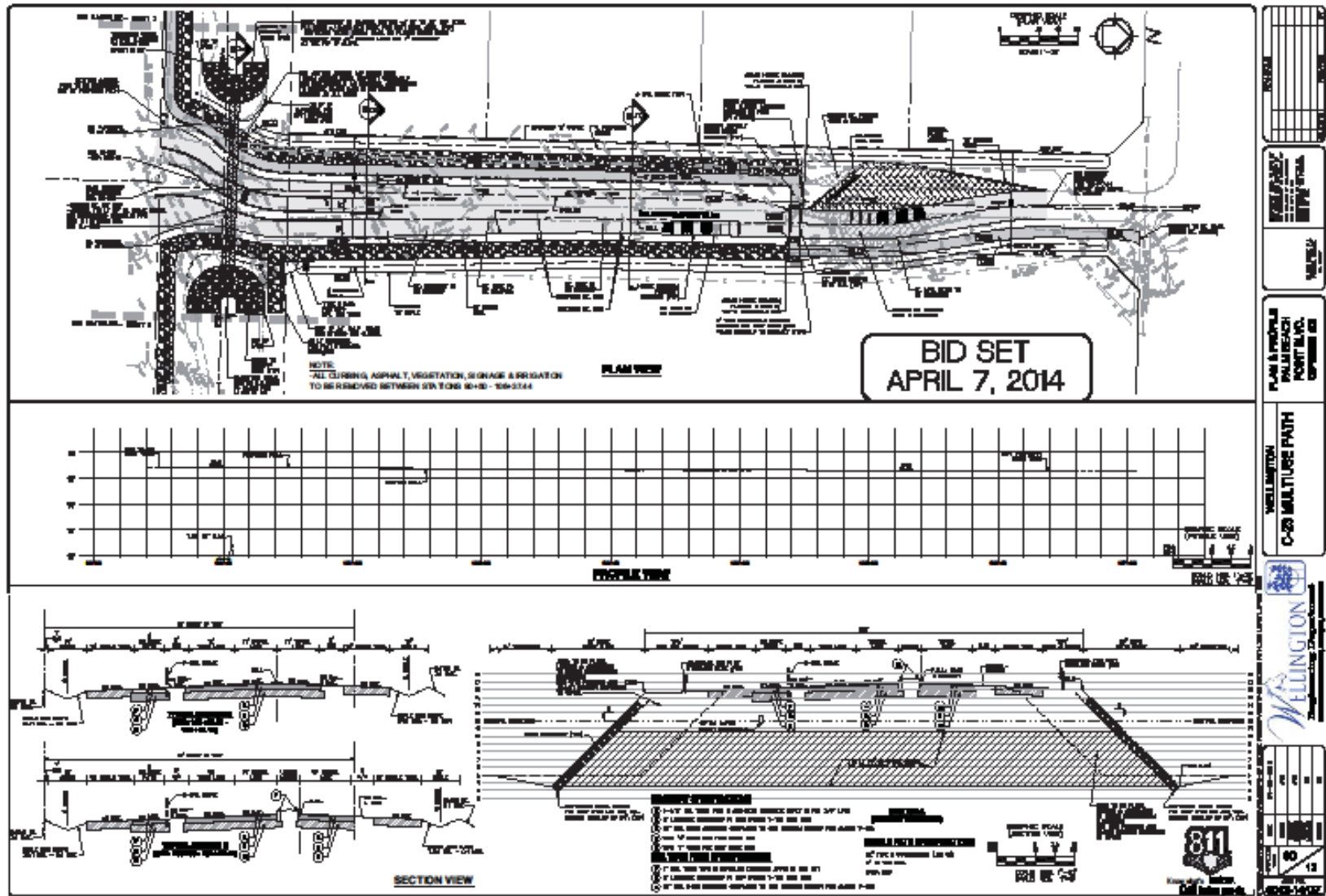
2nd Lowest Cost (\$8,000)
Relatively Direct Path
Meets Standards
Disruption Minimized
Future Flexibility

CONS

HOA Dislikes
Closer to Gate House



Palm Beach Point Crossing – Option #3



Cost = \$482,934; \$722,881

Palm Beach Point Crossing – Option #3

PROS

Preferred by HOA

CONS

Reconstruct Road

Most Disruptive

Indirect Path – 1,000 ft.

Most Expensive (\$147,613)

Exceeds Allocation (\$147,881)

Mid Block Crossing

COST COMPARISON

Option	Cost (\$)
OPTION #1 -	\$575,268
OPTION #2 -	\$583,122
OPTION #3 -	\$722,881
OPTION #4 -	\$654,959

LEGEND

- MULTI-USE TRAIL
- BRIDLE TRAIL
- COMBINATION PAVED MULTIUSE PATH AND BRIDLE TRAIL
- 3-BRD FENCE
- PAVEMENT OVERBUILD
- PAVEMENT RESTORATION
- STORM STRUCTURE / PIPE
- CURBING

WELLINGTON
C-23 MULTISE PATH
OPTION #4

PLAN & PROFILE
PALM BEACH POINT BLVD.
EXHIBIT

REVISIONS

NO.	DATE	BY	CHKD BY	DESCRIPTION

APPROVED FOR THE BOARD OF DIRECTORS
DATE: 10/11/2011
BY: [Signature]

DESIGNED BY: [Signature]
CHECKED BY: [Signature]
IN CHARGE: [Signature]
DATE: 10/11/2011

#039-13/D/12



Palm Beach Point Crossing – Option #4

PROS

- Does Not Require Road Realignment
- Meets Standards
- Disruption Minimized
- Future Flexibility

CONS

- \$80,000 More Expensive
- Bridle Trail Paved 230 ft.
- Indirect Path - 600 ft.
- Mid-Block Crossing

Questions/Comments Please