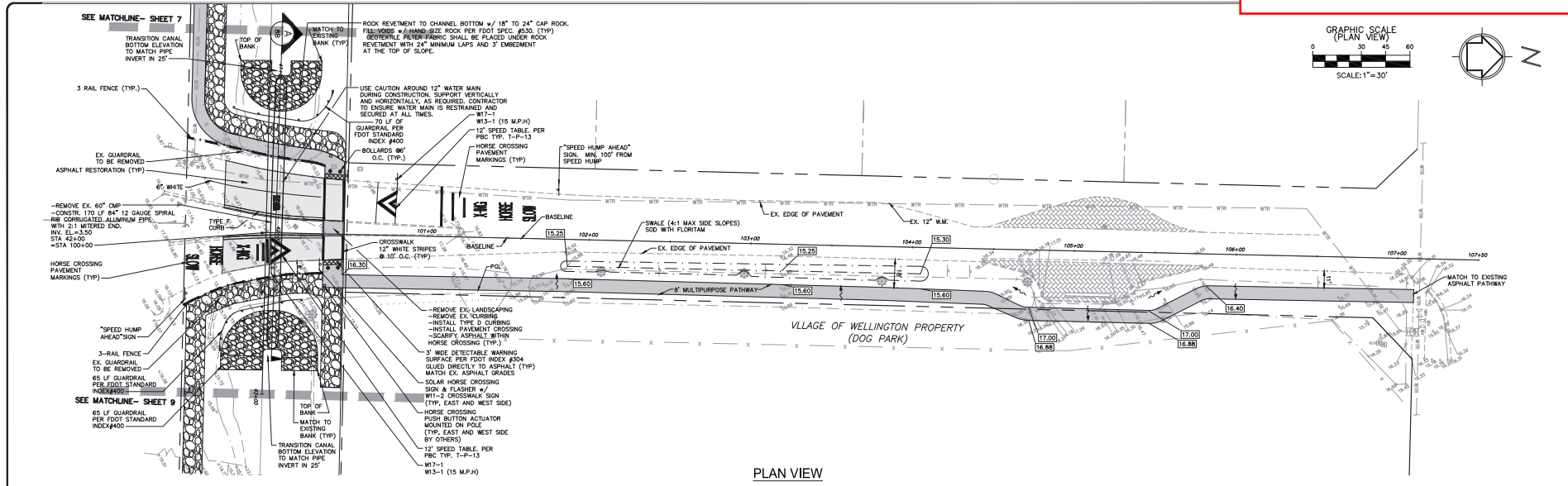
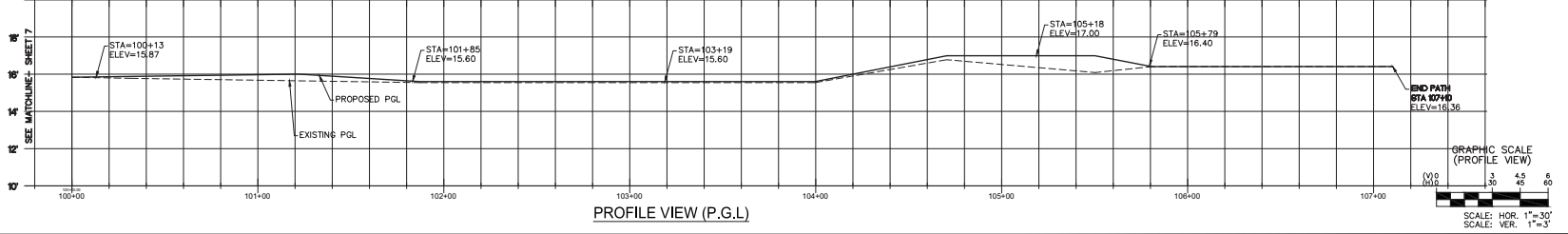


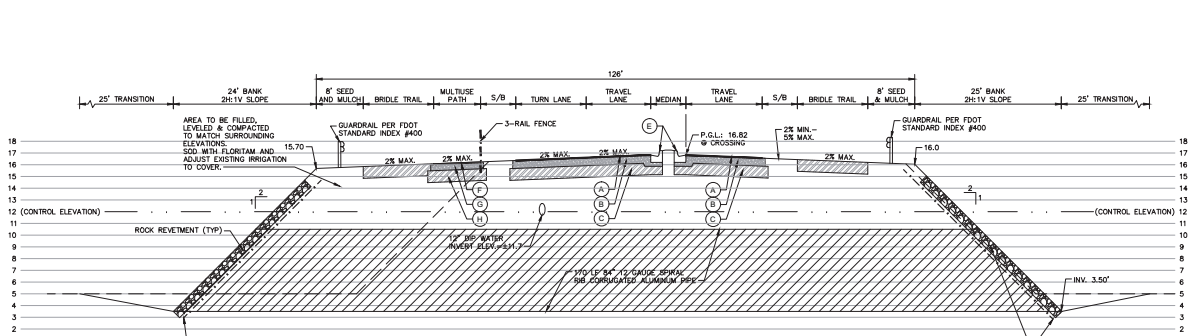
OPTION 2



PLAN VIEW



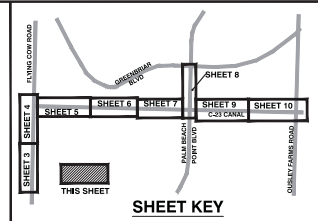
PROFILE VIEW (P.G.L.)



SECTION A (CULVERT CROSSING)

- ROADWAY SPECIFICATIONS**
- (A) 1-1/2" MN. THICK TYPE II ASPHALTIC CONCRETE APPLY IN TWO 3/4" LIFTS
 - (B) 8" LIMEROCK COMPACTED TO 98% AASHTO T-180 (LR 100)
 - (C) 12" MN. THICK SUBGRADE COMPACTED TO 98% MAXIMUM DENSITY PER AASHTO T-180
 - (D) TYPE "D" CURB PER FOOT INDEX 300
 - (E) TYPE "E" CURB PER FOOT INDEX 300
- MULTIUSE PATH SPECIFICATIONS**
- (A) 1" MN. THICK TYPE III ASPHALTIC CONCRETE APPLY IN ONE LIFT
 - (B) 6" LIMEROCK COMPACTED TO 98% AASHTO T-180 (LR 100)
 - (C) 12" MN. THICK SUBGRADE COMPACTED TO 98% MAXIMUM DENSITY PER AASHTO T-180

- BRIDLE PATH SPECIFICATIONS**
- 12" TYPE B STABILIZATION (LR 40)
 - 2" OF TOP SOIL
 - BAHA 500



BID SET

APRIL 7, 2014

NO.	DATE	BY	REVISIONS

<p>APPROVED FOR THE VALUE OF WELLINGTON MULTIUSE PATH. THE VALUE OF WELLINGTON MULTIUSE PATH IS APPROXIMATED IN THIS PLAN OR IN REVISIONS TO THIS PLAN. SCALE OF USE.</p> <p>WILLIAM WHEAT, P.E. LICENSE NO. 14077</p>	<p>PLAN & PROFILE PALM BEACH POINT BLVD. OPTION #2</p> <p>WELLINGTON C-23 MULTIUSE PATH</p> <p>FLORIDA TURNPIKE AUTHORITY Engineering Department 12200 Forest Hill Boulevard, Wellington, Florida 33414</p>
--	---

DATE	DRAWN	CHECKED	INCHES	BR	BR	BR
04-25-2013	JWR	JWR	8B	BR	BR	BR
JOB NO. #013-14/DZ						