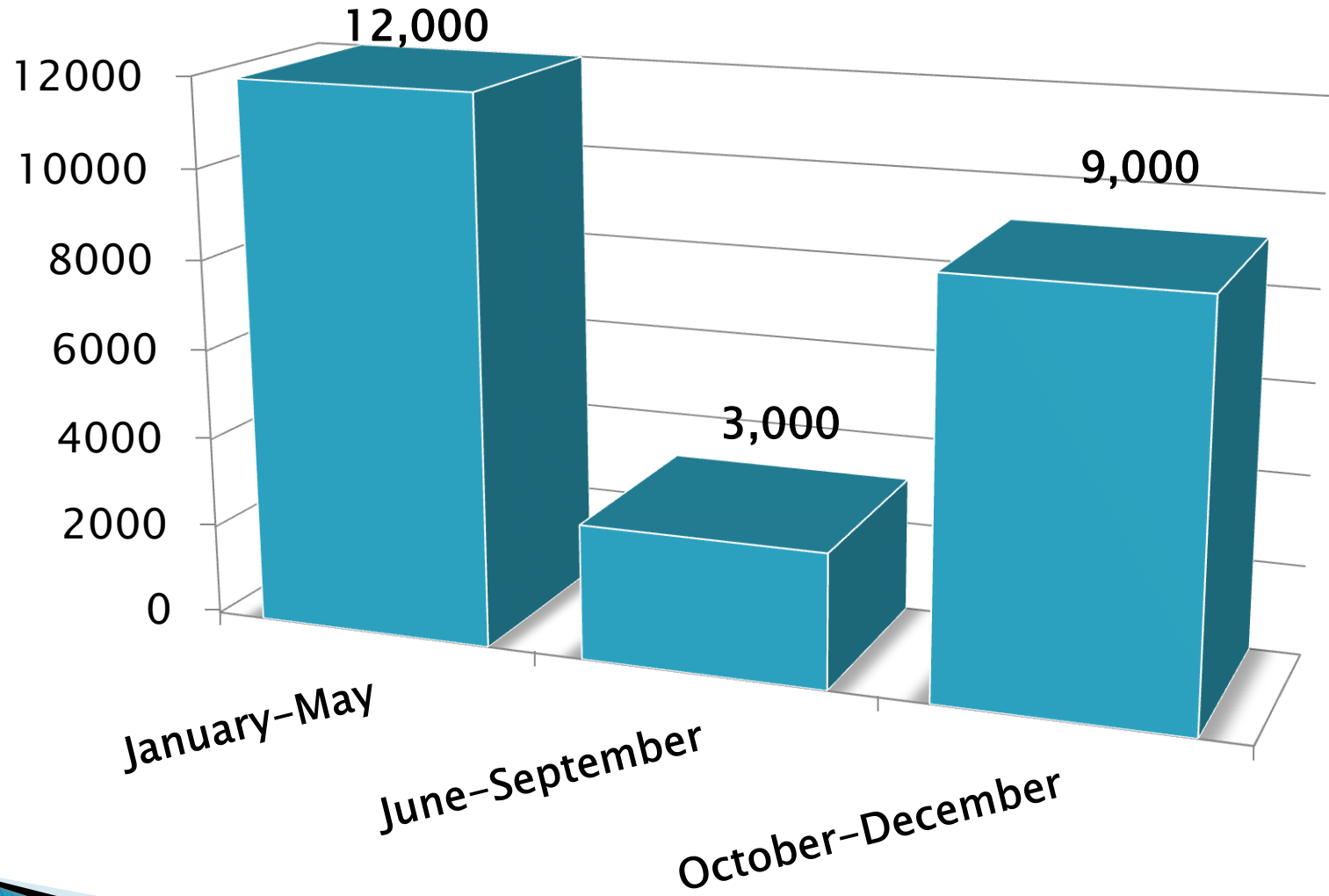


Wellington Village Council Workshop

Livestock Waste Disposal
November 5, 2014

There are Horses in Wellington!



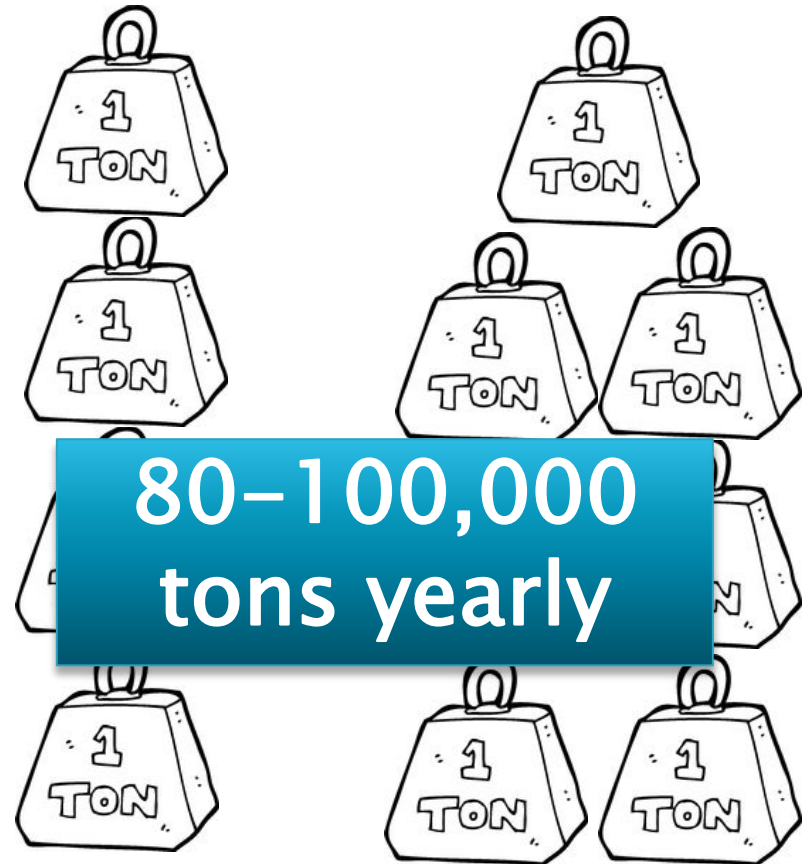
1,000 lb. Horse

Daily



Bedding/Shaving Manure

Annually

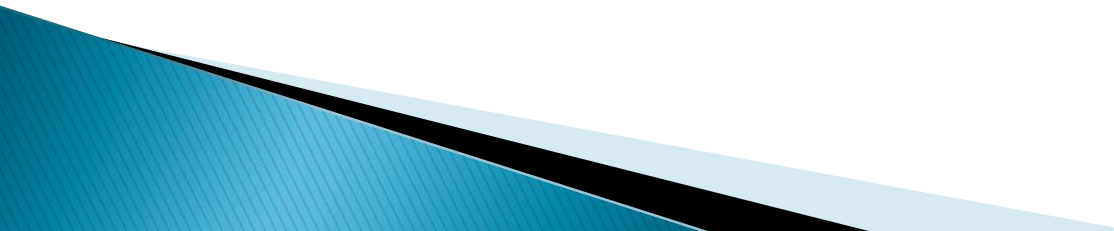


80-100,000
tons yearly

Bedding/Shaving

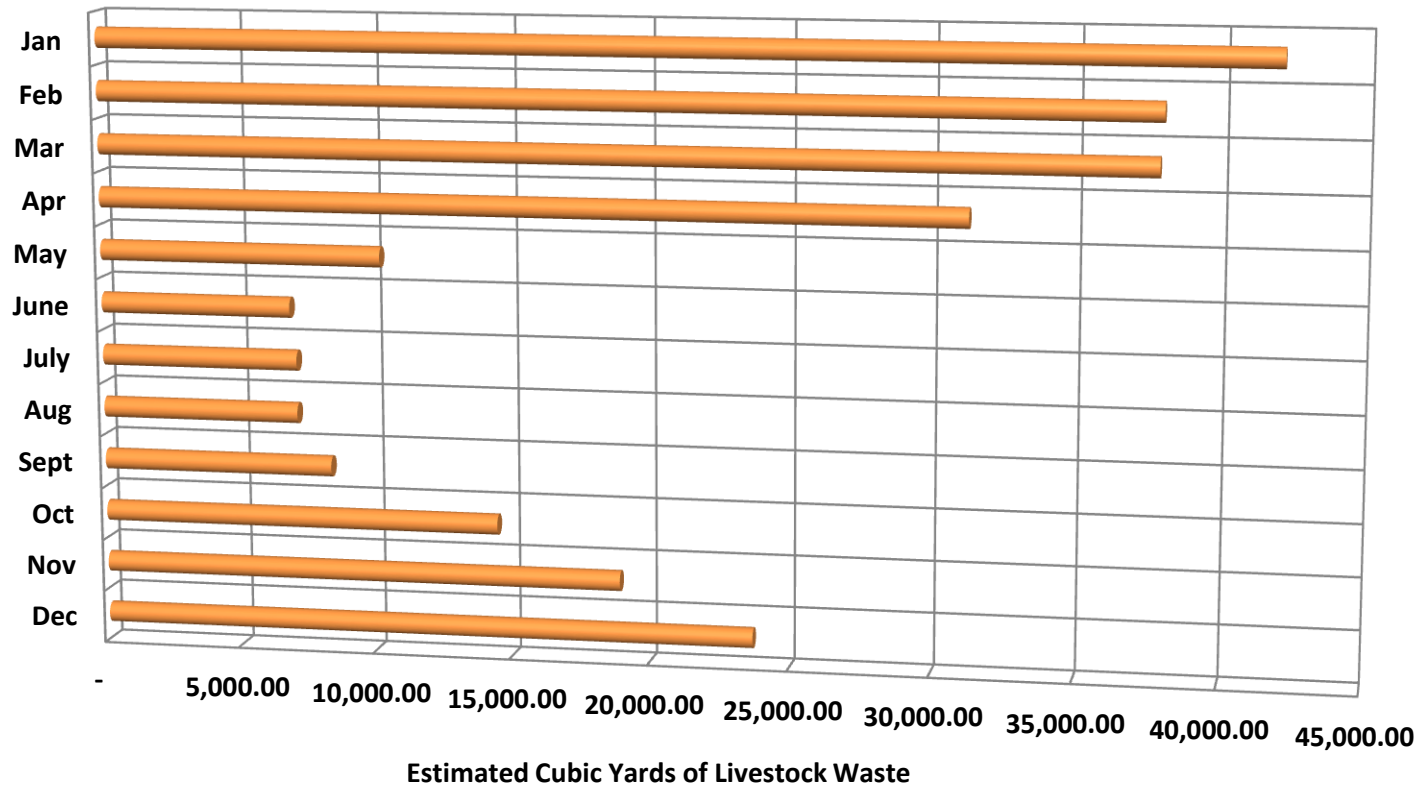
Manure

Phosphorus Removal?

- ▶ Improving Water Quality is paramount and for Wellington, phosphorus removal is the key
 - ▶ A ton of manure contains 8 LB of nitrogen, 2.5 LB of phosphorus and 8 LB of potassium
 - ▶ The Village has spent millions of dollars in re-plumbing our drainage system and the yearly cost of maintenance continues
- 

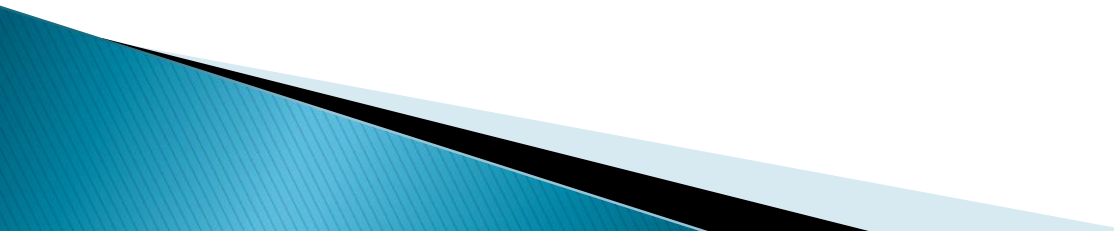
Estimated Monthly Volumes

Livestock Waste Volumes

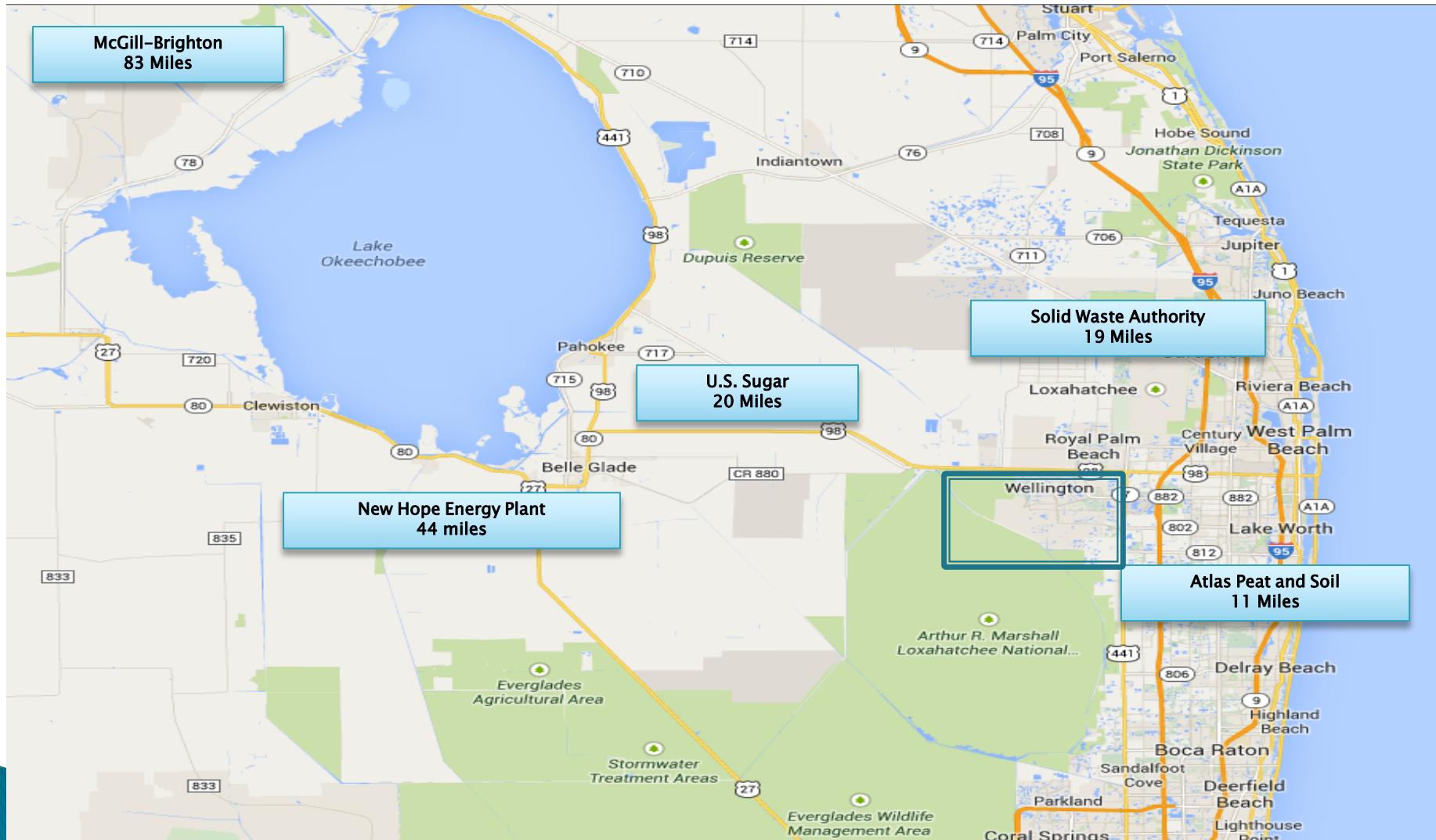


Series1

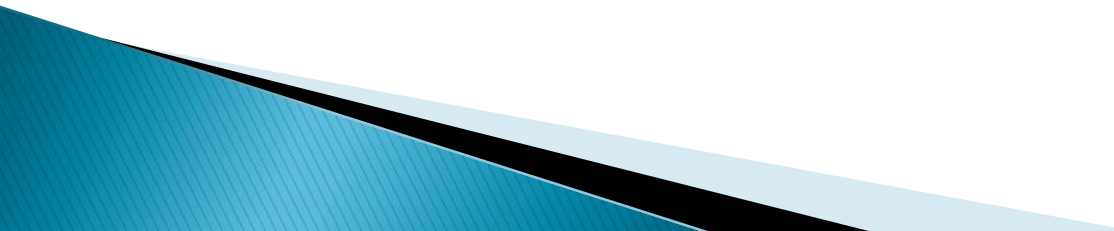
Hauling by the Numbers

- ▶ An estimated 16,000 loads per year
 - ▶ 600 farms – over 800 barns
 - ▶ Approximately 800 manure bins
 - ▶ Hauled by 10 haulers with approximately 30 trucks
 - ▶ During season haulers work 12– 14 hour days
- 

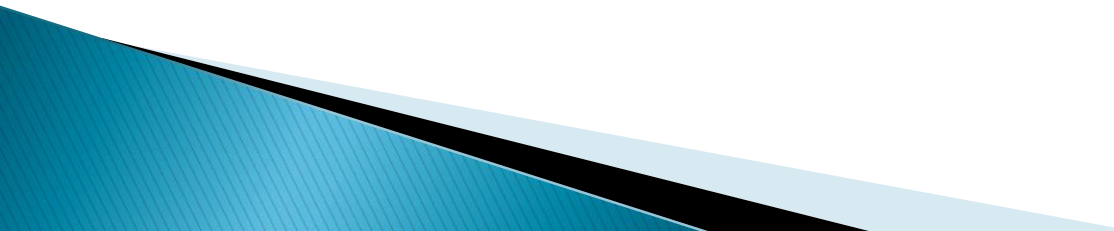
Where does all the Waste Go?



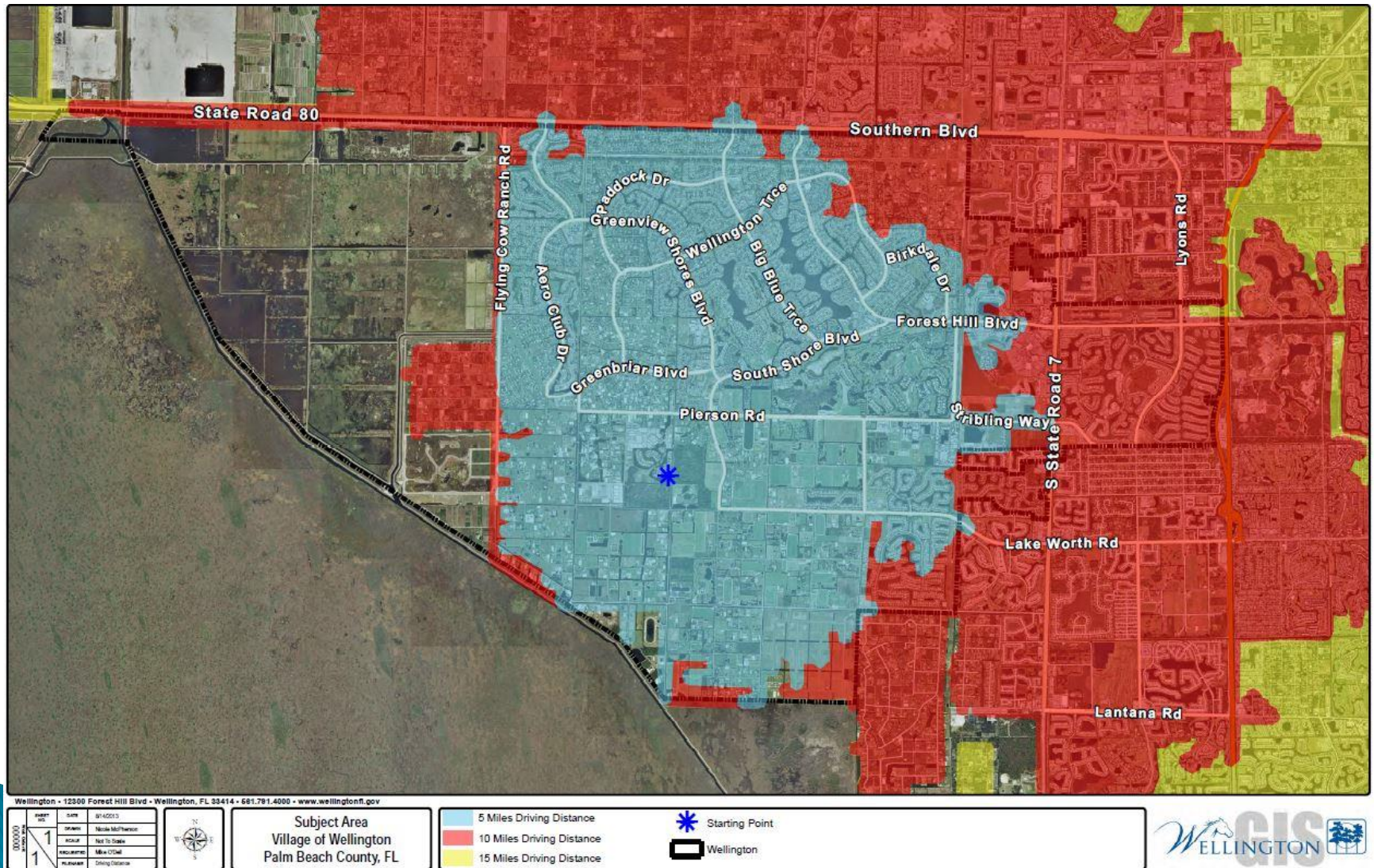
What does Wellington know about this manure issue?

- ▶ We know of 5 end users that can dispose of the livestock waste
 - ▶ We know that at least 3–4 start-up companies have business & could be an end users
 - ▶ We know the end users are not haulers
- 

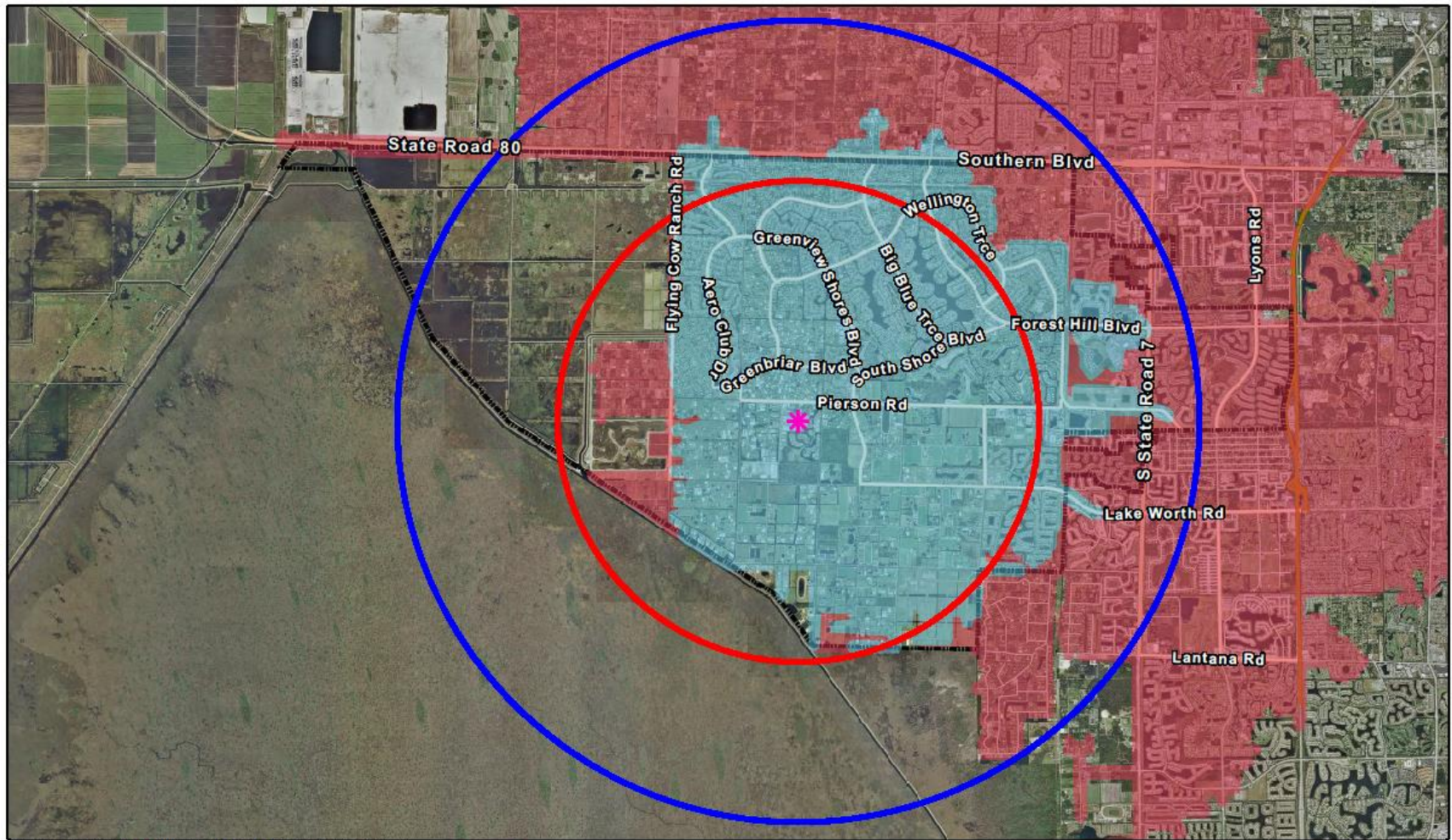
Hauler Feed Back

- ▶ U.S. Sugar– believes they are receiving 75% –80% of the waste being collected
 - ▶ Haulers support a central collection facility
 - ▶ Haulers recommend drive distances between 5, and 10 miles of Wellington
 - ▶ Disposal sites are few and extended travel time is an issue
- 

Livestock Waste Haulers are key



Collection Site Search Area



Wellington • 12300 Forest Hill Blvd • Wellington, FL 33414 • 681.791.4000 • www.wellingtonfl.gov

000000	1	DATE	07/20/2013
		DRAWN	Wade McPherson
		SCALE	Not To Scale
		INCLUDES	Maple Creek
		PLANNED	City of Wellington



**Waste Haulers
Drive Distances**

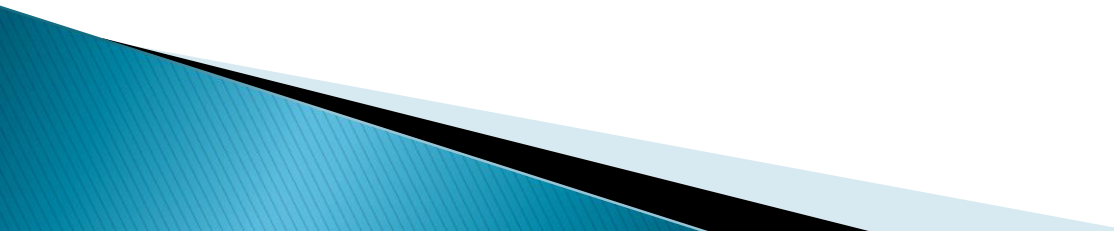
- 3 Miles Radius
- 5 Miles Radius

- 5 Driving Distance
- 10 Driving Distance

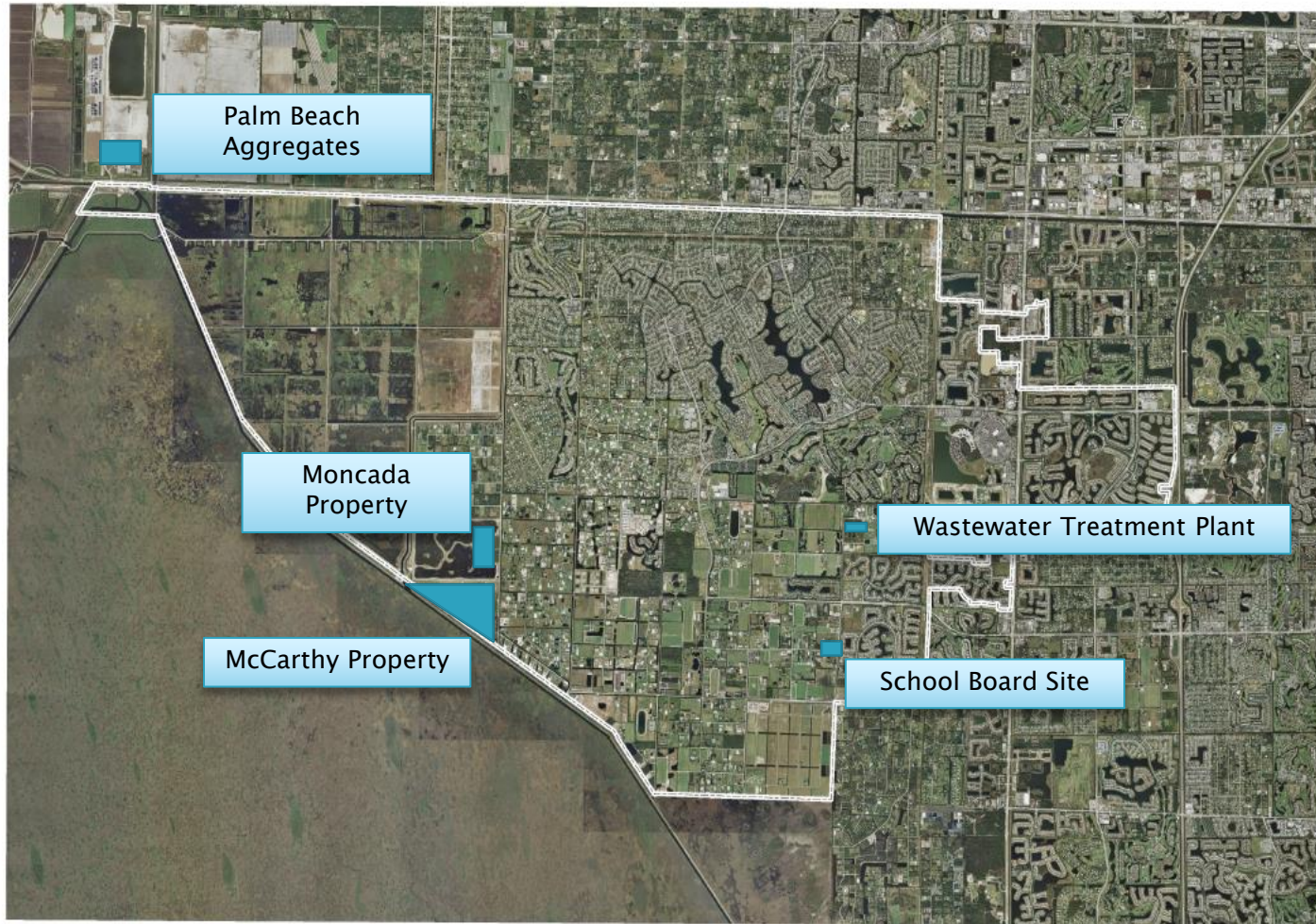
- * Starting Point
- Wellington



Collection Site Considerations

- ▶ Location for proper disposal
 - ▶ Method for quantification
 - ▶ Maximizes long distances hauls to end users
 - ▶ Economical and legal alternative to illegal dumping
 - ▶ Provides a future location for vegetative waste disposal
- 

Waste Collection - Potential Sites



Legend

Wellington Boundary

Copyright © 2014 Wellington

1 Inch Equals 7,100.95 Feet

Wellington GIS • 12300 Forest Hill Boulevard • Wellington, FL 33414 • 561.791.4000 • gis@wellingtonfl.gov • www.wellingtonfl.gov



Tracking Number: 00000
Print Date: 10/22/2014
Page Number:

Requested By: Mike O'Dell
Drawn By: Ryan Harding
Filename: WasteCollection

Notes

DRAFT DRAFT DRAFT

Options:

- ▶ Do “nothing”
 - let law enforcement and governmental ordinances regulate compliance
 - allow more time for private sector to resolve issue
 - ▶ Pursue a collection site
 - Purchase/lease land (10–12 Ac)
 - construction and operate a collection facility
 - ▶ Pursue Public/Private Partnerships for livestock waste collection, include
 - Town of Loxahatchee Groves
 - Palm Beach County
 - Centralized Collection Location
- 