

Exhibit "D"

130<sup>th</sup> Cul-De-Sac

# **SEXTON ENGINEERING ASSOCIATES, INC.**

110 PONCE DE LEON STREET, SUITE 100  
ROYAL PALM BEACH, FLORIDA 33411  
TELEPHONE (561) 792-3122  
ENG. BUSINESS #7864

## **C-6 CANAL CROSSING**

### **CONSTRUCTION PLANS**

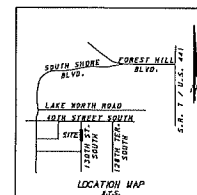
SECTION 28, TOWNSHIP 44S, RANGE 41E  
WELLINGTON, FLORIDA

#### **PLAN INDEX**

SHEET NO.	SHEET DESCRIPTION
1	COVER SHEET
2	STORMWATER POLLUTION PREVENTION PLAN
3-4	GRADING & DRAINAGE PLAN
5	GENERAL NOTES & DETAILS



THESE PLANS HAVE BEEN PREPARED  
IN ACCORDANCE WITH THE STATE OF  
FLORIDA DEPARTMENT OF TRANSPORTATION  
ROADWAY AND TRAFFIC DESIGN STANDARDS  
VILLAGE OF WELLINGTON LAND DEVELOPMENT  
REGULATIONS AND VILLAGE OF WELLINGTON  
WATER UTILITIES DEPARTMENT STANDARDS,  
LATEST EDITION.



ATTENTION IS DIRECTED TO THE FACT THAT  
THESE PLANS MAY HAVE BEEN ALTERED IN  
SIZE BY REPRODUCTION. THIS MUST BE  
CONSIDERED WHEN OBTAINING SCALED DATA.

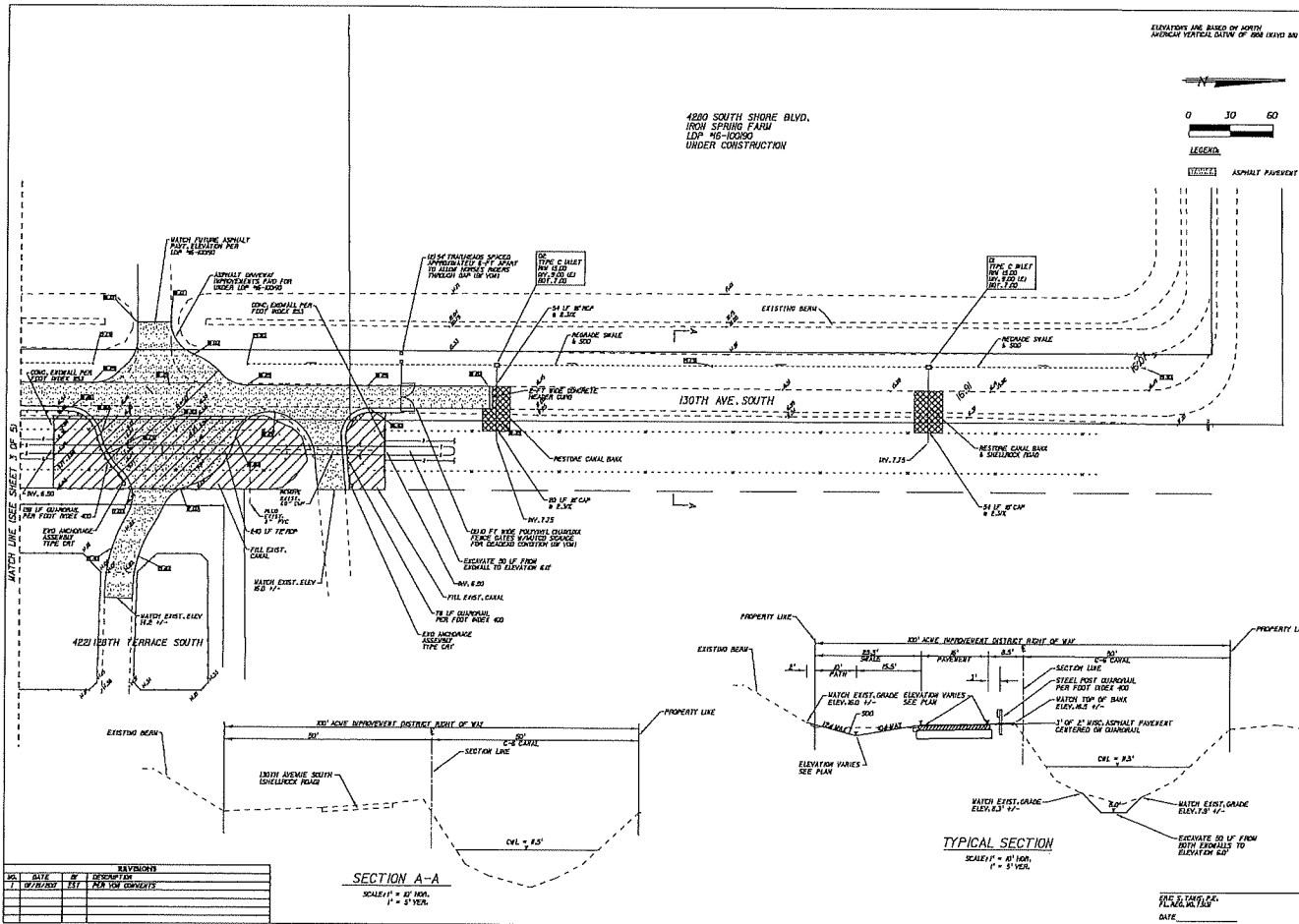
THESE PLANS AND SPECIFICATIONS ARE NOT  
VALID WITHOUT THE ORIGINAL SIGNATURE AND  
ORIGINAL RAISED SEAL OF A STATE OF FLORIDA  
LICENSED PROFESSIONAL ENGINEER.

NO.	DATE	BY	DESCRIPTION
1	07/05/17	ET	PLANING COMMENTS

DATE: 07/05/17  
PLN: J.M.1705







# GRADING & DRAINAGE PLAN

S. SECTION ENGINEERING ASSOCIATES, INC.  
CONSULTING ENGINEERS AND SURVEYORS  
10000 S. W. 10TH STREET, SUITE 200  
MIAMI, FLORIDA 33156  
PHONE 561-752-3000 FAX 561-752-3008  
FL REGISTRATION: LAND SURVEYING: 120000004

C-6 CANAL CROSSING  
WELLINGTON, FLORIDA

DATE: 07/03/2017  
SHEET: 4 OF 5  
PROJECT: 17-001

