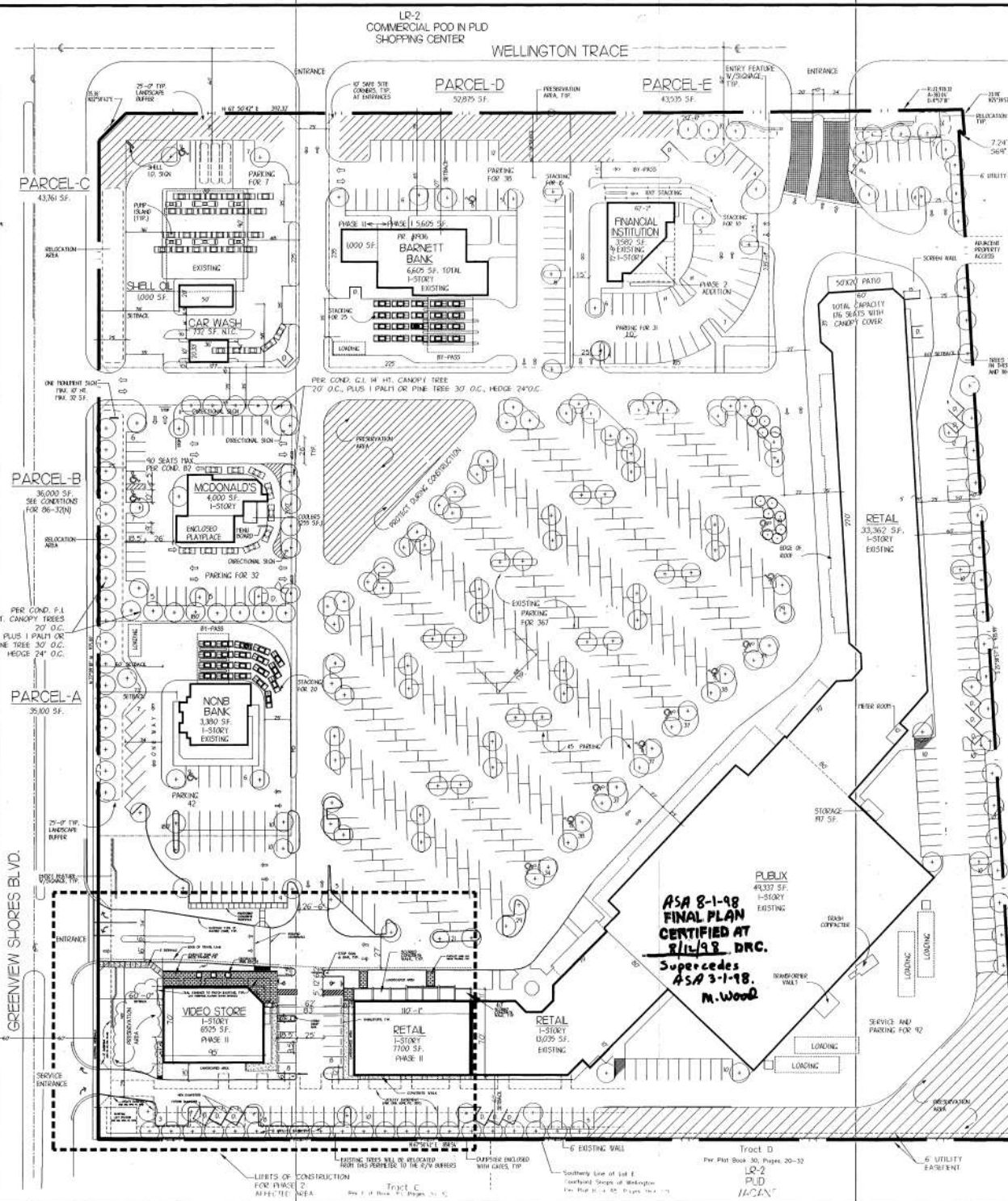


# Exhibit A - Proposed Site Plan

PLAN PREPARED BY: RAYNE, CALIFORNIA  
 PROJECT NO. 98-11-198  
 DATE: 8/11/98  
 DRAWN BY: M. WOOD  
 CHECKED BY: M. WOOD  
 APPROVED BY: M. WOOD  
 SCALE: 1"=50'-0"

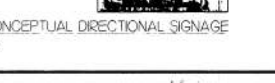
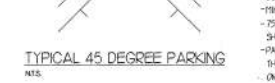
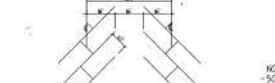
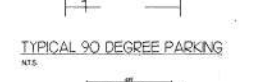
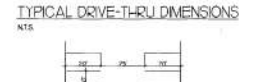


- ### SITE NOTES
1. THE BASE INFORMATION FOR THIS PROJECT WAS OBTAINED FROM A SURVEY PREPARED BY MCE TILLER, INC. DATE: 4/30/97.
  2. ALL BUILDINGS ARE ONE-STORY.
  3. ROADS IN R/W ARE CONCEPTUAL AND SUBJECT TO CHANGE.
  4. REFER TO PLANS BY SITEWORK & WHITE, INC. ENGINEERS FOR PAVING & DRAINAGE WATER & SEWER WORK. ALSO LOCATIONS OF CURB CAR STOPS, ETC. AND DETAIL FOR SAME.
  5. FINISH FLOOR ELEVATION -10.5'
  6. NO SUBDIVISION PROPOSED AT THIS TIME.

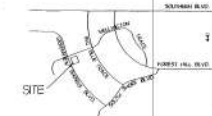
- ### GENERAL NOTES
- AREAS OF RELOCATION HAVE SOME EXISTING TREE MATERIAL WHICH WILL BE PRESERVED AND SUPPLEMENTED WITH TREES RELOCATED FROM LEASE PARCELS.
- TREES WILL BE NO GREATER THAN A 60 FOOT GAP BETWEEN EXISTING TREES IN THE PERIMETERS.
- A FINAL LANDSCAPE RETENTION PLAN HAS BEEN SUBMITTED TO ZONING FOR FINAL APPROVAL AFTER THE PRE-CLEARING INSPECTION WAS COMPLETED.
- ### PARCEL B - FAST FOOD
1. DUE TO LOADING PROCEDURES BEING PERFORMED AFTER HOURS, NO LOADING AREA HAS BEEN DESIGNATED ON THIS SITE PLAN.
  2. 8/20/95 DCA SUBMITTAL: PROPOSED MODIFICATION FOR PARCEL B TO CONVERT FROM A CARWASH TO A FAST FOOD RESTAURANT.
  3. TRAIL 40 SEATS ARE ALLOWED IN FAST FOOD RESTAURANT.
  4. SEE LANDSCAPE PLANS FOR PERIMETER PLANTING (SP-3).

- ### LEGAL DESCRIPTION
- LOT E, COURTYARD SHOPS AT WELLINGTON, ACCORDING TO THE PLAT THEREAS AS RECORDED IN PLAT BOOK 65, PAGES 894 AND 895 OF THE PUBLIC RECORDS OF PALM BEACH COUNTY, FLORIDA.
- CONTAINING: 18.00 ACRES MORE OR LESS, SUBJECT TO EASEMENTS, RESTRICTIONS, RESERVATIONS AND RIGHTS OF WAY OF RECORD.

### LR-2 COMMERCIAL PARCEL IN PUD OFFICE PARK



### LOCATION MAP



### PROJECT DATA

SITE DATA	
ZONING:	AG-PUD
COMMERCIAL PARCEL WITHIN WELLINGTON PUD:	12,748 AC.
SHOPPING CENTER SITE AREA:	4,850 AC.
PARCELS A,B,C,D,E:	80,099 AC.
GROSS SITE AREA:	289,345 SF.

BUILDING DATA	
FLOOR AREA/LOT AREA RATIO (100,236/788,360):	12.5%
P.A.R. (100,236/788,360):	12.5%
PROPOSED AREA:	78%
EXISTING AREA:	2%

PARKING AND LOADING DATA	
SHOPPING CENTER SUPERMARKET:	6,000
RETAIL:	4,337
PHASE I 46,397 SF:	46,397
PHASE II 12,228 SF:	12,228
SUB TOTAL:	104,962 SF

PARKING AND LOADING DATA	
PHASE I 46,397 SF:	46,397
PHASE II 12,228 SF:	12,228
SUB TOTAL:	104,962 SF
LOT E, COURTYARD SHOPS AT WELLINGTON, ACCORDING TO THE PLAT THEREAS AS RECORDED IN PLAT BOOK 65, PAGES 894 AND 895 OF THE PUBLIC RECORDS OF PALM BEACH COUNTY, FLORIDA.	
CONTAINING: 18.00 ACRES MORE OR LESS, SUBJECT TO EASEMENTS, RESTRICTIONS, RESERVATIONS AND RIGHTS OF WAY OF RECORD.	
PHASE I 46,397 SF:	46,397
PHASE II 12,228 SF:	12,228
SUB TOTAL:	104,962 SF

PARKING AND LOADING DATA	
PHASE I 46,397 SF:	46,397
PHASE II 12,228 SF:	12,228
SUB TOTAL:	104,962 SF

PARKING AND LOADING DATA	
PHASE I 46,397 SF:	46,397
PHASE II 12,228 SF:	12,228
SUB TOTAL:	104,962 SF

PARKING AND LOADING DATA	
PHASE I 46,397 SF:	46,397
PHASE II 12,228 SF:	12,228
SUB TOTAL:	104,962 SF

PARKING AND LOADING DATA	
PHASE I 46,397 SF:	46,397
PHASE II 12,228 SF:	12,228
SUB TOTAL:	104,962 SF

PARKING AND LOADING DATA	
PHASE I 46,397 SF:	46,397
PHASE II 12,228 SF:	12,228
SUB TOTAL:	104,962 SF

PARKING AND LOADING DATA	
PHASE I 46,397 SF:	46,397
PHASE II 12,228 SF:	12,228
SUB TOTAL:	104,962 SF

PARKING AND LOADING DATA	
PHASE I 46,397 SF:	46,397
PHASE II 12,228 SF:	12,228
SUB TOTAL:	104,962 SF

PARKING AND LOADING DATA	
PHASE I 46,397 SF:	46,397
PHASE II 12,228 SF:	12,228
SUB TOTAL:	104,962 SF

PARKING AND LOADING DATA	
PHASE I 46,397 SF:	46,397
PHASE II 12,228 SF:	12,228
SUB TOTAL:	104,962 SF

PARKING AND LOADING DATA	
PHASE I 46,397 SF:	46,397
PHASE II 12,228 SF:	12,228
SUB TOTAL:	104,962 SF

PARKING AND LOADING DATA	
PHASE I 46,397 SF:	46,397
PHASE II 12,228 SF:	12,228
SUB TOTAL:	104,962 SF

PARKING AND LOADING DATA	
PHASE I 46,397 SF:	46,397
PHASE II 12,228 SF:	12,228
SUB TOTAL:	104,962 SF

