

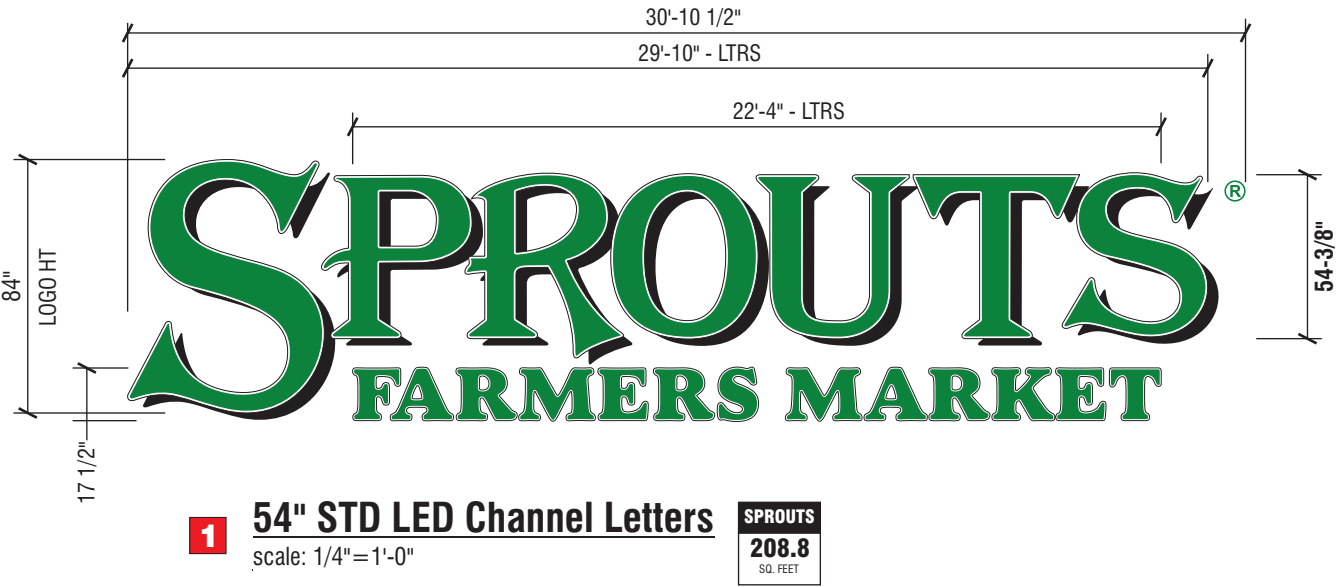
Exhibit D - Requested Sign Program



Front (West) Elevation  
Scale: 1/16" = 1'-0"

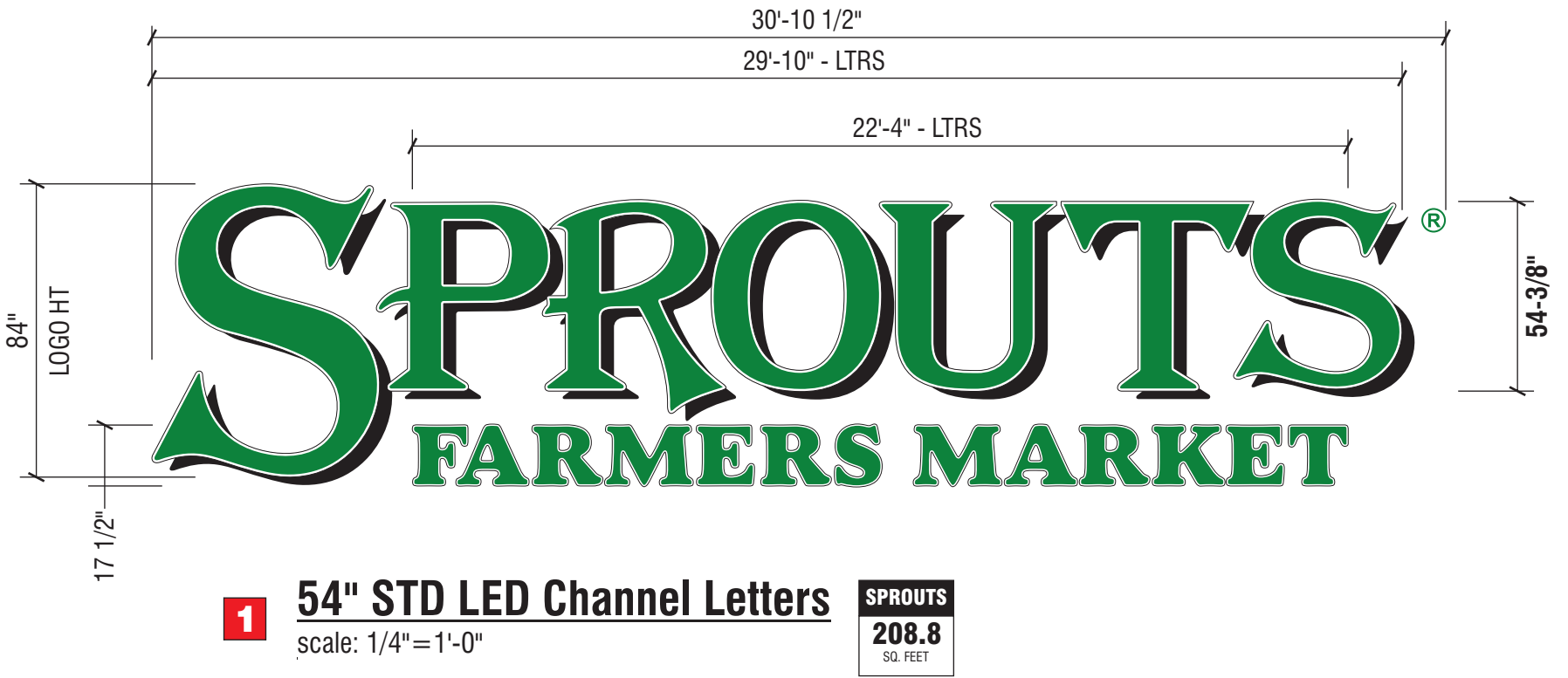
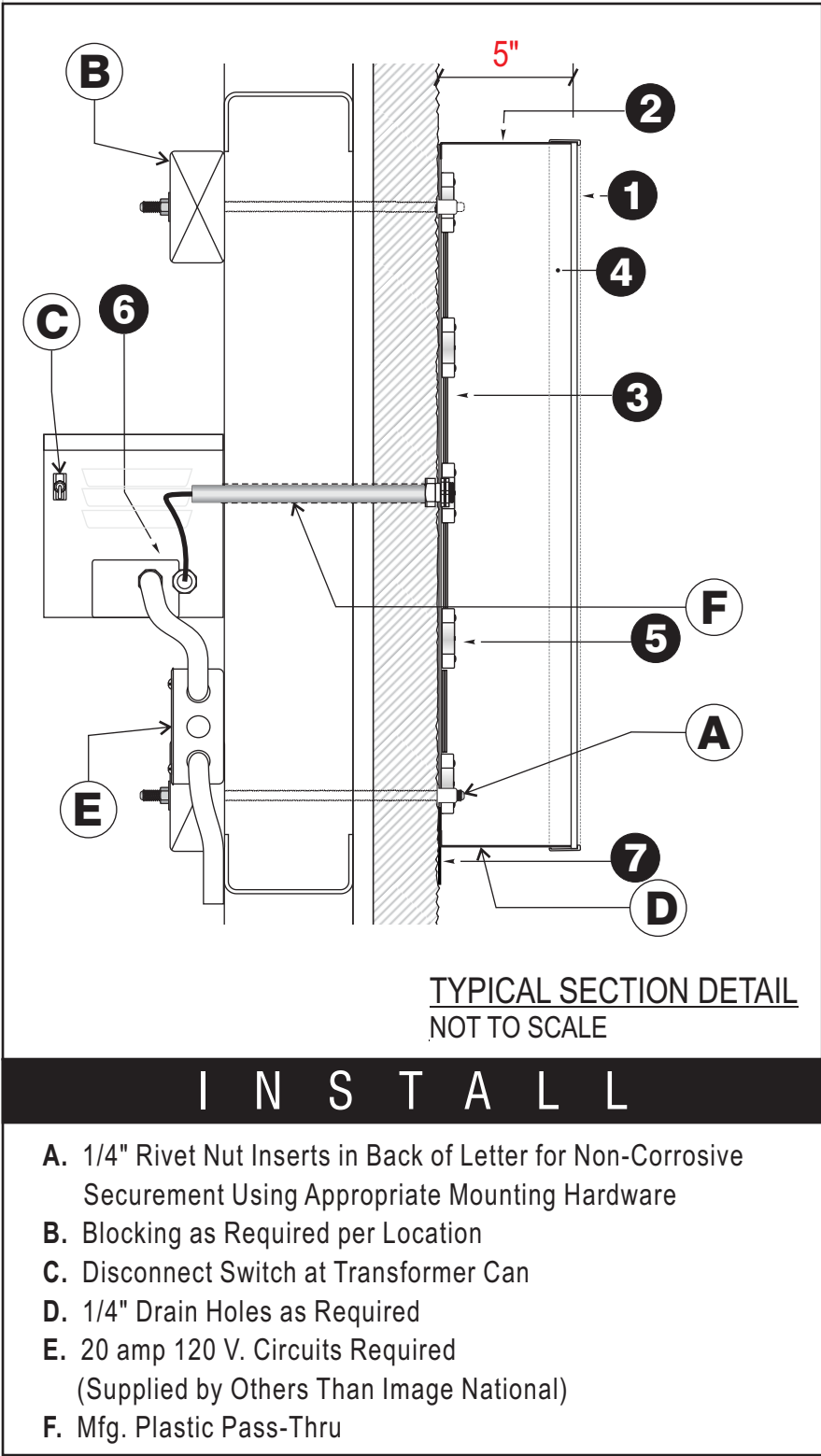


Simulated Night View  
No Scale

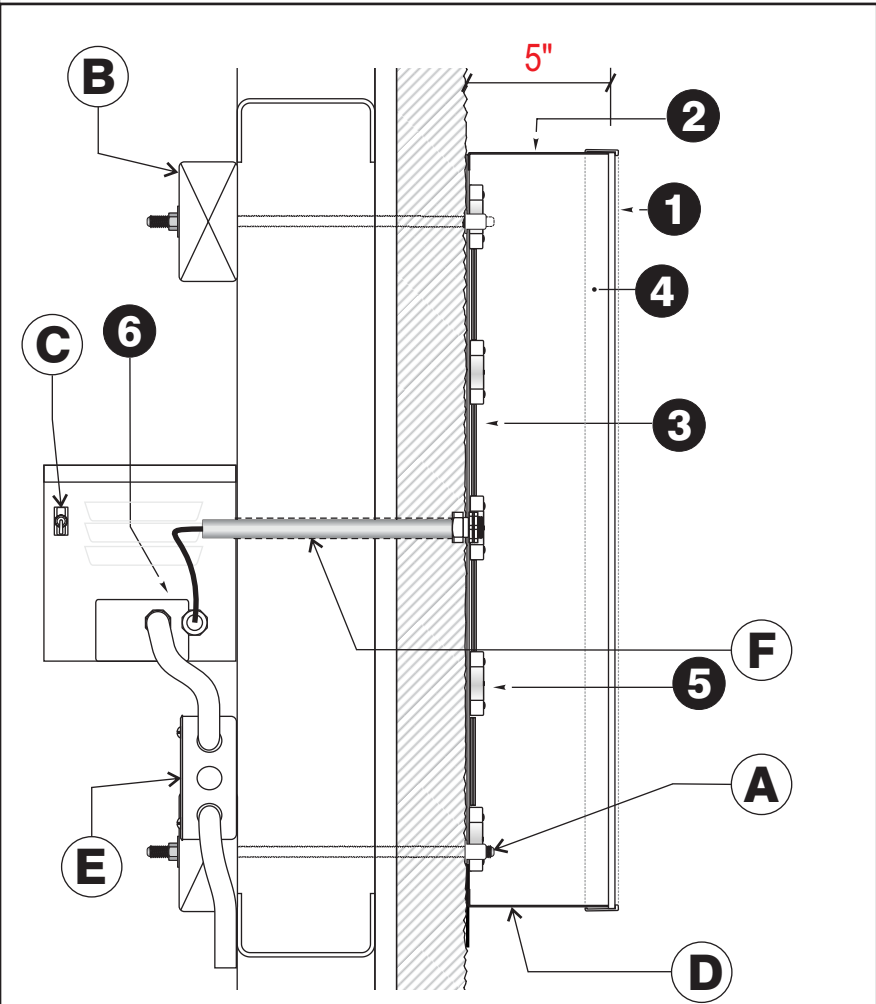


It is the intent and purpose of this color rendering to provide a basic color representation of your sign finish and color. However, digital media and printed colors will vary from actual paint finish and color. Existing painted surfaces will have a perceptible difference in shade and sheen from your sign finish. Providing a sample of the paint you wish to match or a Matthews paint color formula will minimize the differences.

16265 Star Road Nampa, ID 83687 toll free: 800.592.8058 tele: 208.345.4020 fax: 208.336.9886 www.imagenational.com



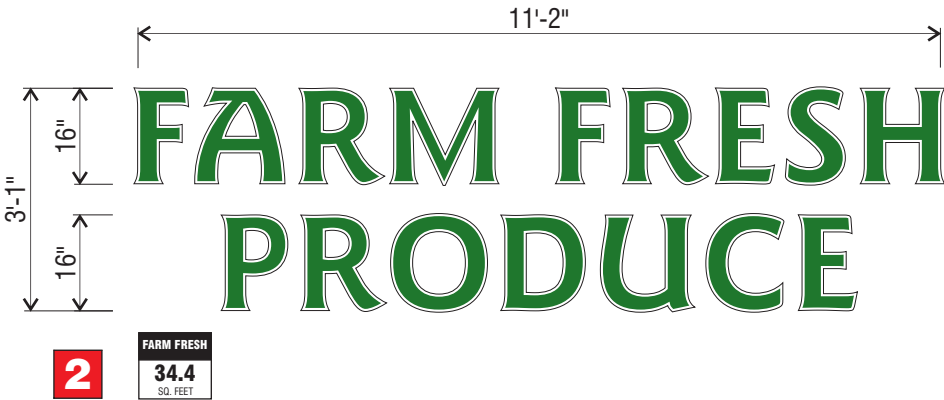
<b>1 FACE:</b> MATERIAL: 3/16" ACRYLIC COLOR: #7328 WHITE VINYL: 3M 3630-156 VIVID GREEN	<b>2 RETURNS:</b> MATERIAL: "SPROUTS" PRE-PAINTED .050 ALUM. "FARMERS MARKET" PRE-PAINTED .040 ALUM. SIZE: 5" COLOR: SATIN BLACK (WHITE INSIDE)	<b>3 ILLUMINATION:</b> MATERIAL: GE LED SIZE: GEMX71-W1 2015 COLOR: WHITE
<b>4 TRIM CAP:</b> MATERIAL: 1" JEWELITE TRIM CAP COLOR: BLACK	<b>5 BACKS:</b> MATERIAL: PRE-PAINTED .063 ALUM. COLOR: PRE-PAINTED WHITE (WHITE INSIDE)	<b>6 ELECTRICAL:</b> POWER SUPPLY: GE TOTAL amps: 3.25 @ 120 volts
<b>7 DROP SHADE:</b> MATERIAL: PRE-PAINTED .040 ALUM. COLOR: PAINTED SATIN BLACK ATTACHED TO BACK of LETTER	<b>R MATERIAL:</b> 3/16" ACRYLIC SIZE: 7" x 7" COLOR: WHITE w/ 3630-156 VIVID GREEN VINYL	



TYPICAL SECTION DETAIL  
NOT TO SCALE

I N S T A L L

- A. 1/4" Rivet Nut Inserts in Back of Letter for Non-Corrosive Securement Using Appropriate Mounting Hardware
- B. Blocking as Required per Location
- C. Disconnect Switch at Transformer Can
- D. 1/4" Drain Holes as Required
- E. 20 amp 120 V. Circuits Required (Supplied by Others Than Image National)
- F. Mfg. Plastic Pass-Thru



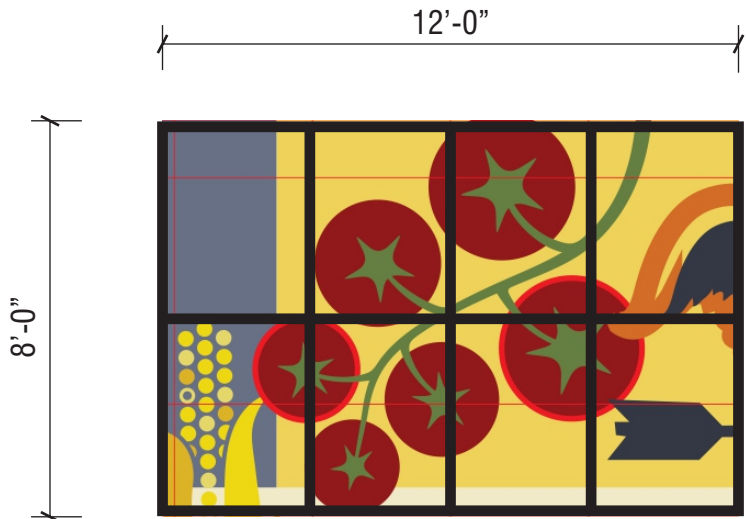
16" GREEN STD LED Channel Letters  
scale: 3/8" = 1'-0"

<b>1 FACE:</b> MATERIAL: 3/16" ACRYLIC COLOR: WHITE VINYL: 3M 3630-156 VIVID GREEN	<b>2 RETURNS:</b> MATERIAL: PRE-PAINTED .040 ALUM. SIZE: 5" COLOR: SATIN BLACK (WHITE INSIDE)	<b>3 ILLUMINATION:</b> MATERIAL: GE LED SIZE: GEMX71-W1 2015 COLOR: WHITE
<b>4 TRIM CAP:</b> MATERIAL: 1" JEWELITE TRIM CAP COLOR: BLACK	<b>5 BACKS:</b> MATERIAL: PRE-PAINTED .063 ALUM. COLOR: PRE-PAINTED WHITE (WHITE INSIDE)	<b>6 ELECTRICAL:</b> POWER SUPPLY: GE TOTAL amps: .65 @ 120 volts (ea.)



Front (West) Elevation  
Scale: 1/16"=1'-0"

\*Storefront graphics depicted as Full Sized Window Graphics. Image National to obtain permits for exterior graphics with manufacturing and install by others.



Vinyl Farm Graphics - Storefront Windows

Scale: 1/4"=1'-0"

PRINTED ON EXTERIOR  
MOUNTED 70/30 PERFORATED VINYL

It is the intent and purpose of this color rendering to provide a basic color representation of your sign finish and color. However, digital media and printed colors will vary from actual paint finish and color. Existing painted surfaces will have a perceptible difference in shade and sheen from your sign finish. Providing a sample of the paint you wish to match or a Matthews paint color formula will minimize the differences.

16265 Star Road Nampa, ID 83687 toll free: 800.592.8058 tele: 208.345.4020 fax: 208.336.9886 www.imagenational.com