

Exhibit F - Sprouts Standard Sign Book



# STANDARD SIGN BOOK





**PROTOTYPE BUILDING ELEVATION**  
SCALE: 1/16"=1'-0"

**TYPICAL SIGNAGE REQUEST FOR STOREFRONT**



**MAIN ID SIGN - LED CHANNEL LETTERS**  
SCALE: 3/16"=1'-0"

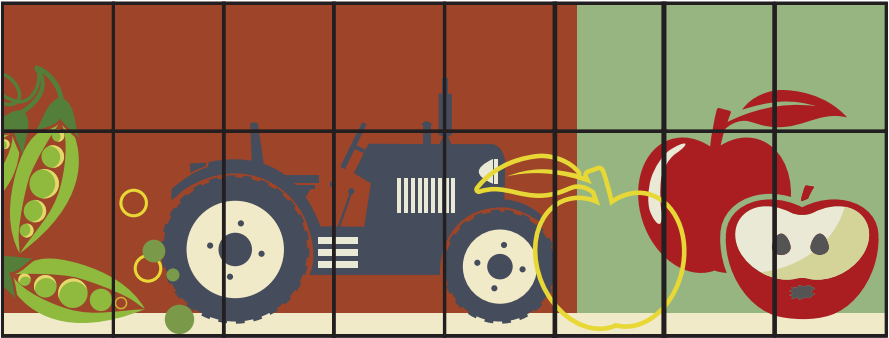
**FARM FRESH  
PRODUCE**

**MEAT DELI**

**NATURAL  
FOODS**

**VITAMINS**

**SECONDARY SIGNAGE - LED CHANNEL LETTERS**  
SCALE: 3/16"=1'-0"



**VINYL FARM MURAL - STOREFRONT WINDOWS**  
NOT TO SCALE  
PRINTED ON EXTERIOR  
MOUNTED 70/30 PERFORATED VINYL

It is the intent and purpose of this color rendering to provide a basic color representation of your sign finish and color. However, digital media and printed colors will vary from actual paint finish and color. Existing painted surfaces will have a perceptible difference in shade and sheen from your sign finish. Providing a sample of the paint you wish to match or a Matthews paint color formula will minimize the differences.

16265 Star Road Nampa, ID 83687 toll free: 800.592.8058 tele: 208.345.4020 fax: 208.336.9886 www.imagenational.com

**TYPICAL SECTION DETAIL**  
NOT TO SCALE

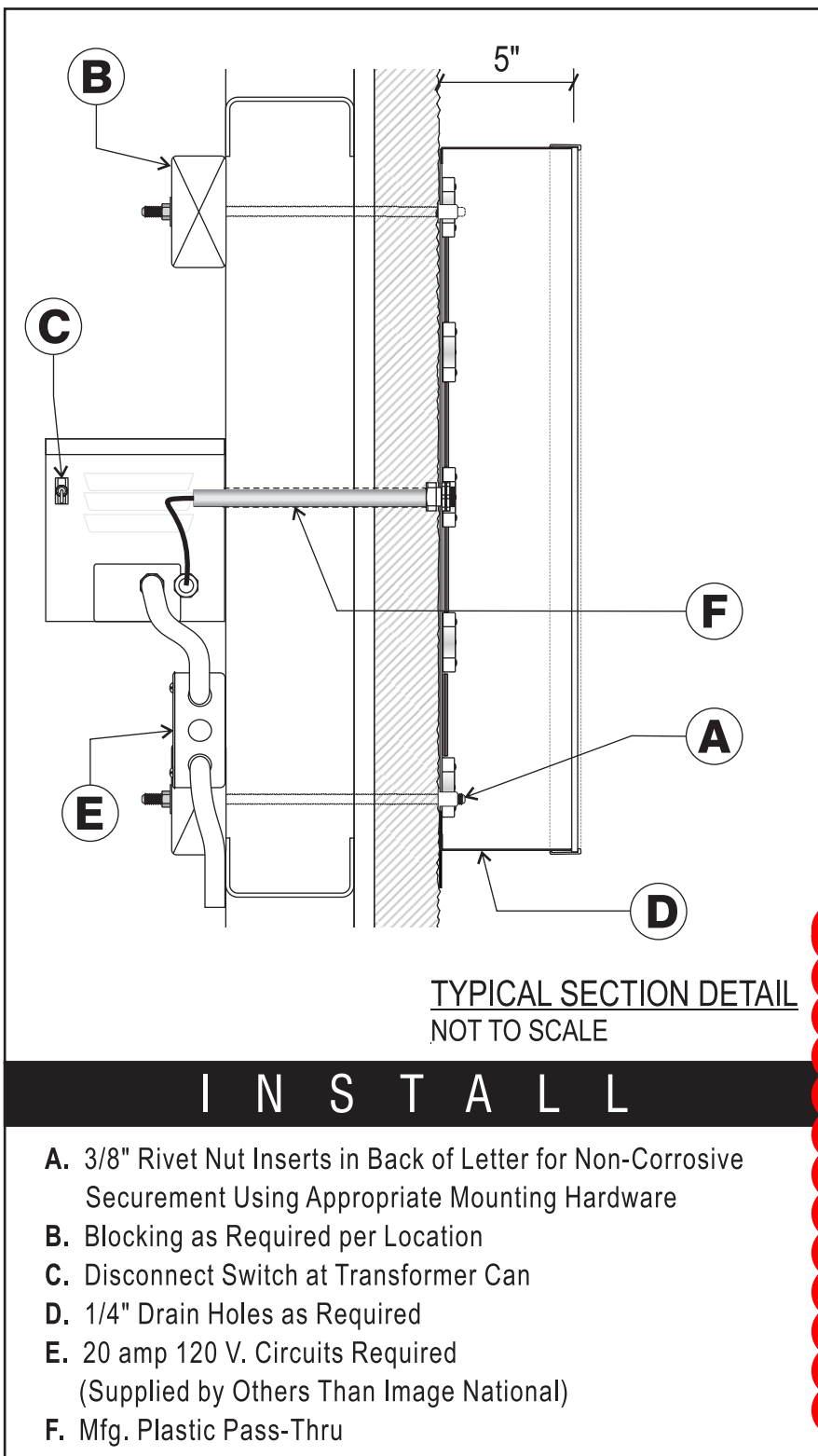
# INSTALL

- A.** 3/8" Rivet Nut Inserts in Back of Letter for Non-Corrosive Securement Using Appropriate Mounting Hardware
- B.** Blocking as Required per Location
- C.** Disconnect Switch at Transformer Can
- D.** 1/4" Drain Holes as Required
- E.** 20 amp 120 V. Circuits Required (Supplied by Others Than Image National)
- F.** Mfg. Plastic Pass-Thru



- FACES - WHITE ACRYLIC WITH GREEN VINYL OVERLAY & WHITE WEDED LETTER OUTLINE
- TRIMCAP - 1" BLACK
- ILLUMINATION - GE WHITE LED
- RETURNS - 5" PRE-PAINTED BLACK
- DROPSHADE - .040 PRE-PAINTED BLACK ALUM. ATTACHED TO BACK OF LETTER
- REG. MARK - 3/16" WHITE ACRYLIC WITH GREEN VINYL "R" & CIRCLE





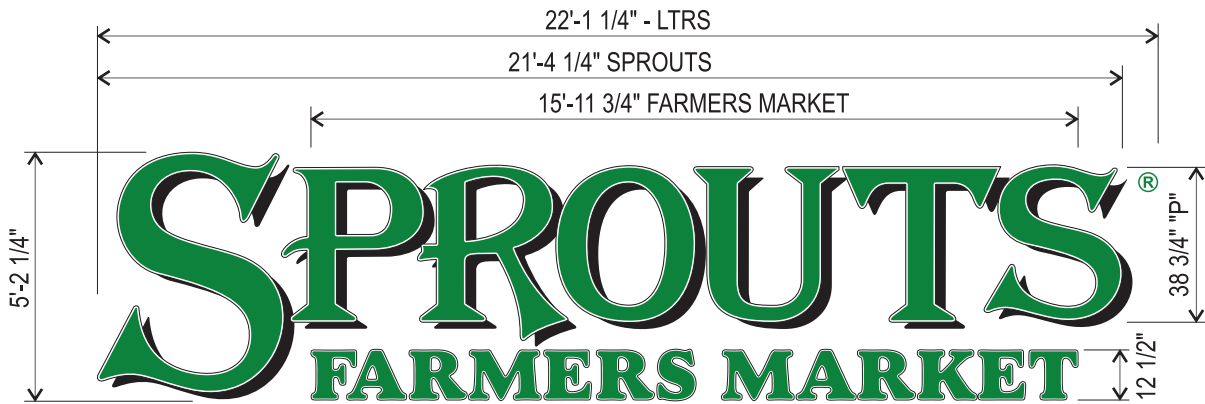
TYPICAL SECTION DETAIL  
NOT TO SCALE

## I N S T A L L

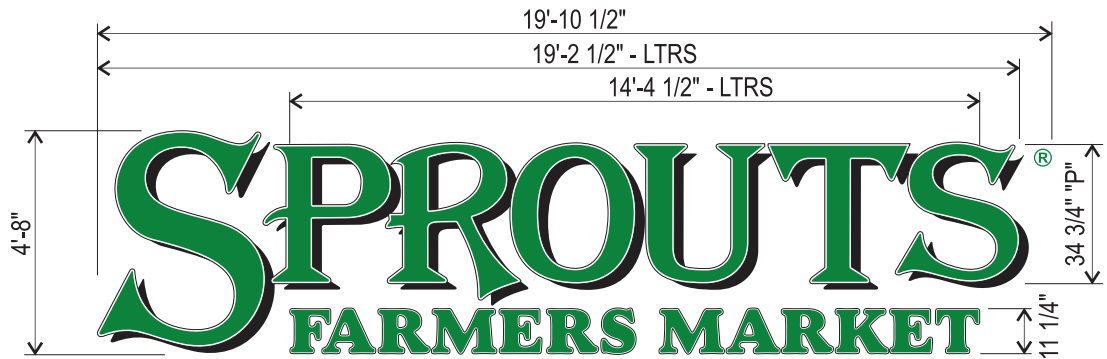
- A. 3/8" Rivet Nut Inserts in Back of Letter for Non-Corrosive Securement Using Appropriate Mounting Hardware
- B. Blocking as Required per Location
- C. Disconnect Switch at Transformer Can
- D. 1/4" Drain Holes as Required
- E. 20 amp 120 V. Circuits Required  
(Supplied by Others Than Image National)
- F. Mfg. Plastic Pass-Thru



66" CHANNEL LETTERS  
SCALE: 1/4"=1'-0"  
AREA = 128.9 SQ. FT  
SFMLM66SFMG



60" CHANNEL LETTERS  
SCALE: 1/4"=1'-0"  
AREA = 106.7 SQ. FT  
SFMLM60SFMG



54" CHANNEL LETTERS  
SCALE: 1/4"=1'-0"  
AREA = 89.6 SQ. FT  
SFMLM54SFMG

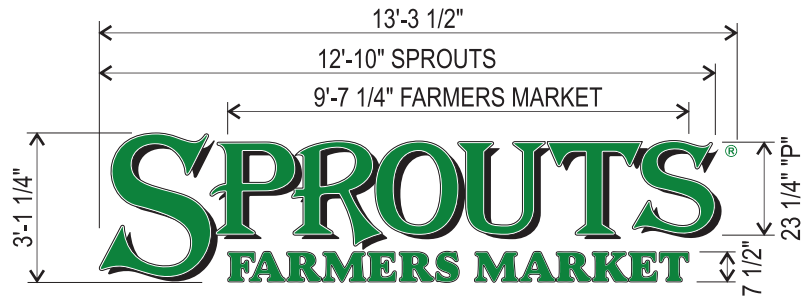
Staff Recommendation with enhanced features within Sign Area



48" CHANNEL LETTERS  
SCALE: 1/4"=1'-0"  
AREA = 68.3 SQ. FT  
SFMLM48SFMG



42" CHANNEL LETTERS  
SCALE: 1/4"=1'-0"  
AREA = 52.2 SQ. FT  
SFMLM42SFMG



36" CHANNEL LETTERS  
SCALE: 1/4"=1'-0"  
AREA = 38.5 SQ. FT  
SFMLM36SFMG

- FACES - WHITE ACRYLIC WITH GREEN VINYL OVERLAY & WHITE WEDED LETTER OUTLINE
- TRIMCAP - 1" BLACK
- ILLUMINATION - GE WHITE LED
- RETURNS - 5" PRE-PAINTED BLACK
- DROPSHADE - .040 PRE-PAINTED BLACK ALUM. ATTACHED TO BACK OF LETTER
- REG. MARK - 3/16" WHITE ACRYLIC WITH GREEN VINYL "R" & CIRCLE

It is the intent and purpose of this color rendering to provide a basic color representation of your sign finish and color. However, digital media and printed colors will vary from actual paint finish and color. Existing painted surfaces will have a perceptible difference in shade and sheen from your sign finish. Providing a sample of the paint you wish to match or a Matthews paint color formula will minimize the differences.

16265 Star Road Nampa, ID 83687 toll free: 800.592.8058 tele: 208.345.4020 fax: 208.336.9886 www.imagenational.com