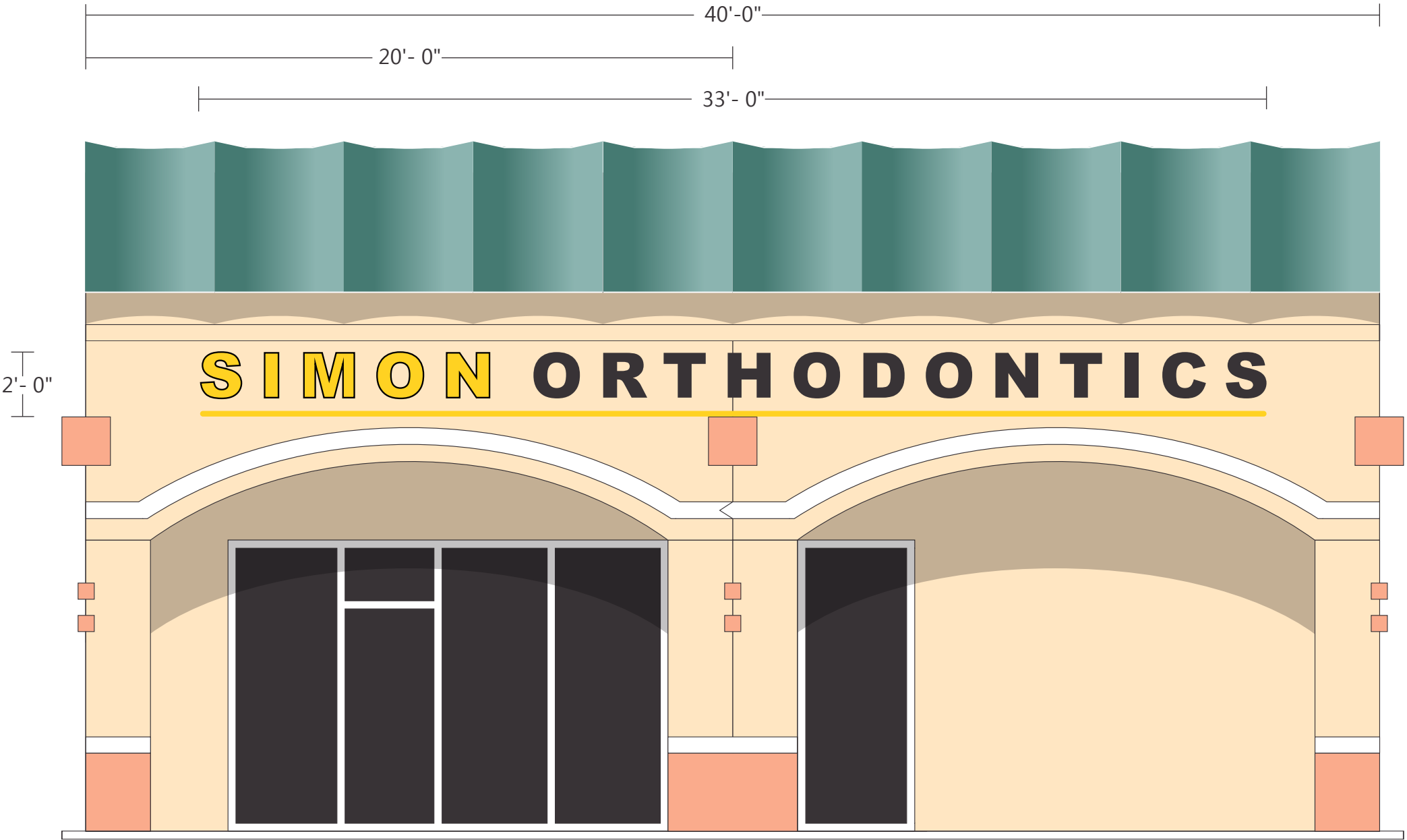


SOUTH ELEVATION SCALE 1/4" = 1' - 0"

Secondary (End) Elevation

RECEIVED
By Planning and Zoning at 1:59 pm, Jun 04, 2018



PROPOSAL: Fabricate and install one (1) set of LED illuminated channel letters utilizing translucent vinyl

DESIGNED IN COMPLIANCE 2017 FLORIDA BUILDING CODE, 6th EDITION SECTION 1620 AND APPENDIX H AND ASCE 7-10
V(ULT) WIND SPEED 170 MPH • EXPOSURE CLASSIFICATION = C • RISK CATEGORY = II
DESIGN PRESSURE 38.5 PSF

Dynamic Engineering Solutions, Inc.
John H. Omslaer, PE 52733, EB 26829
351 S. Cypress Road, Suite 303 • Pompano Beach, FL 33060

NAME	SIMON ORTHODONTICS			APPROVAL
JOB NAME	SIMON ORTHODONTICS			COMP.
ADDRESS	16200 FOREST HILL BLVD, WELLINGTON, FL			
DESIGNER	DWG NO.	SALES REP.	DATE	
M.B.	18324	ALLIE	06/04/18	REVISIONS

This design is the property of McNeill Signs, Inc. and may not be reproduced without permission.

555 S. DIXIE HWY, EAST, POMPANO BEACH, FL 33060 BROW. (954) 946-3474 PALM BCH (561) 737-6304 DADE (305) 947-0631
FAX (954) 946-8051
WEB SITE - www.mcneillsigns.com SALES DEPT. E-MAIL - sales@mcneillsigns.com