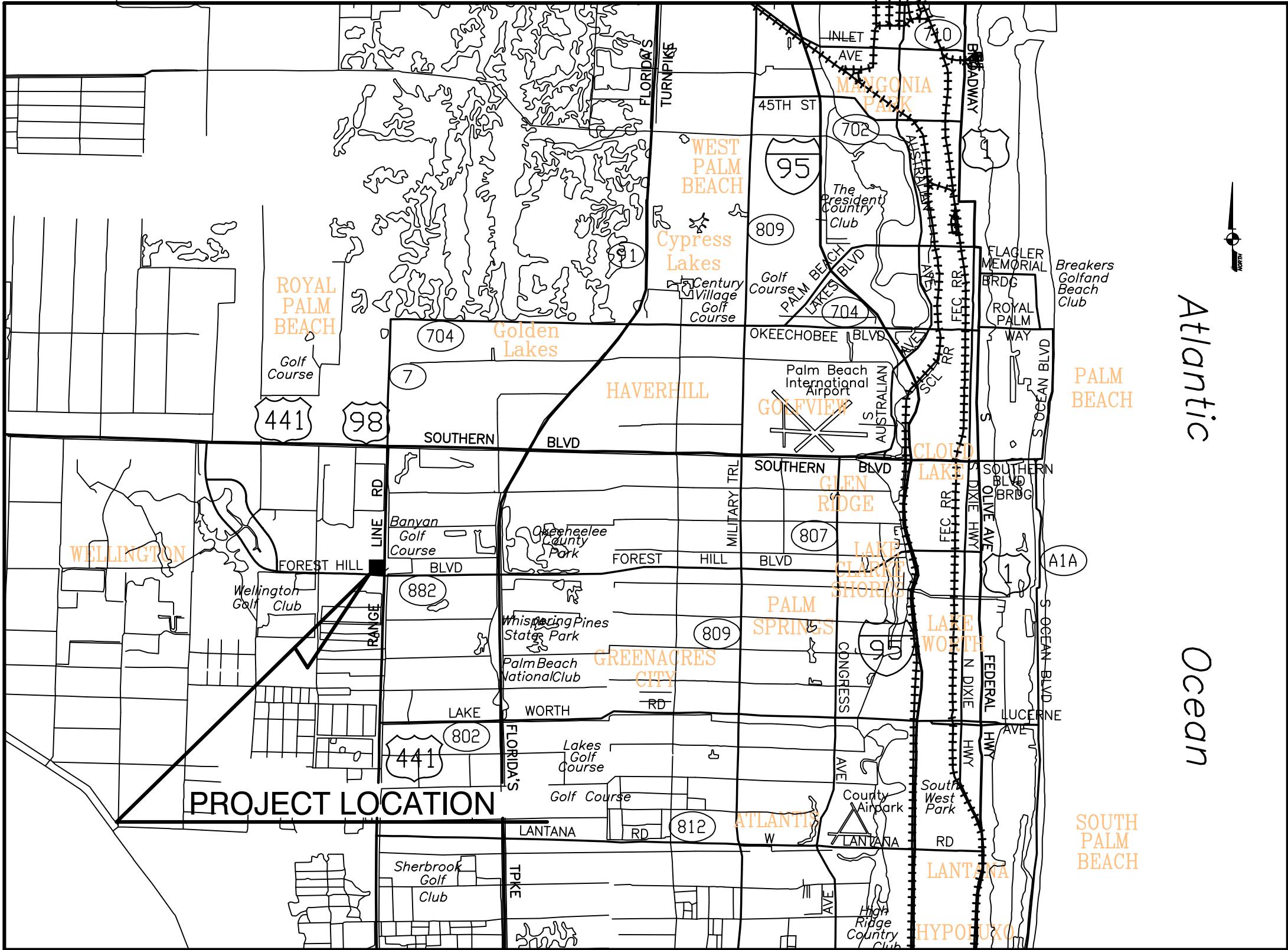


VILLAGE OF WELLINGTON



WELLINGTON REGIONAL HOSPITAL WATER SERVICE MODIFICATIONS

MARCH, 2018



VICINITY MAP

VILLAGE ADMINISTRATORS

COUNCIL:
MAYOR - ANNE GERWIG
VICE MAYOR - JOHN T McGOVERN
COUNCILMAN - MICHAEL J. NAPOLEONE
COUNCILMAN - MICHAEL DRAHOS
COUNCILWOMAN - TANYA SISKIND
VILLAGE MANAGER - PAUL SCHOFIELD
ASST. VILLAGE MANAGER - JAMES BARNES
UTILITIES DIRECTOR - SHANNON LAROCQUE

SHEET TITLE
COVER SHEET
GENERAL NOTES
EXISTING SITE SURVEY
PROPOSED PIPING PLAN
PROPOSED PIPING PLAN (ENLARGED VIEW)
WATER SERVICE DEMOLITION PLAN
EXISTING WATER SERVICE PLAN AND PROFILE
STANDARD DETAILS
STANDARD DETAILS AND NOTES

SHEET NO.
G-01
G-02
C-01
C-02
C-03
C-04
C-05
D-01
D-02

				<div>Kimley»Horn</div> <div>1920 WEKIVA WAY SUITE 200, WEST PALM BEACH, FL 33411 PHONE: 561-845-0665 FAX: 561-863-8175 WWW.KIMLEY-HORN.COM CA 00000696</div>	KHA PROJECT 144957012	<div>WELLINGTON REGIONAL HOSPITAL WATER SERVICE MODIFICATIONS</div> <div>PREPARED FOR WELLINGTON REGIONAL HOSPITAL</div> <div>PALM BEACH COUNTYFLORIDA</div>	LICENSED PROFESSIONAL	<div>COVER SHEET</div>	<div>SHEET NUMBER G-01</div>
					DATE MARCH 2018		THOMAS C. JENSEN		
					SCALE AS SHOWN		FLORIDA LICENSE NUMBER 37290		
					DESIGNED BY TCJ		DATE:		
					DRAWN BY CE				
					CHECKED BY				
No.	REVISIONS			DATE	BY				

This document, together with the concepts and designs presented herein, as an instrument of service, is intended only for the specific purpose and client for which it was prepared. Reuse of and improper reliance on this document without written authorization and adaptation by Kimley-Horn and Associates, Inc. shall be without liability to Kimley-Horn and Associates, Inc.

GENERAL NOTES

1.

THE CONTRACTOR SHALL HAVE AVAILABLE AT THE JOB SITE AT ALL TIMES ONE (1) COPY OF THE CONTRACT DOCUMENTS, INCLUDING PLANS, SPECIFICATIONS AND COPIES OF ALL REQUIRED CONSTRUCTION PERMITS.
2.

THE CONTRACTOR SHALL CONTACT ALL CONCERNED UTILITIES AT LEAST 48 HOURS IN ADVANCE OF CONSTRUCTION OPERATIONS.
3.

THE LOCATION AND SIZE OF ALL EXISTING UTILITIES SHOWN ON THE PLANS ARE APPROXIMATE AND ARE BASED ON THE BEST AVAILABLE INFORMATION. THE CONTRACTOR SHALL BE RESPONSIBLE FOR THE LOCATION OF ALL EXISTING UTILITIES. THE CONTRACTOR SHALL VERIFY ALL UTILITIES BY ELECTRONIC METHOD AND BY HAND EXCAVATION IN COORDINATION WITH ALL UTILITY COMPANIES PRIOR TO BEGINNING ANY CONSTRUCTION OPERATIONS. ANY AND ALL CONFLICTS OF EXISTING UTILITIES WITH PROPOSED IMPROVEMENTS SHALL BE RESOLVED BY THE ENGINEER AND THE VILLAGE PRIOR TO BEGINNING ANY CONSTRUCTION OPERATIONS. THIS WORK BY THE CONTRACTOR SHALL BE CONSIDERED INCIDENTAL TO THE CONTRACT AND NO ADDITIONAL COMPENSATION SHALL BE ALLOWED.
4.

IT IS THE CONTRACTOR’S RESPONSIBILITY TO ENSURE HIS COMPLETE FAMILIARITY WITH THE PROJECT SITE AND ITS COMPONENTS TO INCLUDE SUBSURFACE CONDITIONS OF SOIL AND GROUNDWATER TABLE. BY SUBMITTAL OF A BID FOR THIS PROJECT, THE CONTRACTOR ACKNOWLEDGES HIS COMPLETE UNDERSTANDING AND RESPONSIBILITIES WITH RESPECT TO THE CONSTRUCTION ACTIVITIES REQUIRED UNDER THE SCOPE OF THIS PROJECT.
5.

THE CONTRACTOR IS RESPONSIBLE FOR THE PROTECTION AND RESTORATION (IF DAMAGED) OF ALL EXISTING STRUCTURES WITHIN THE CONSTRUCTION LIMITS OF THE PROJECT, INCLUDING BUT NOT LIMITED TO; WALLS, FENCES, POWER POLES, MAIL BOXES, DRAINAGE STRUCTURES, LANDSCAPING, ETC.
6.

PRIOR TO COMMENCEMENT OF CONSTRUCTION, THE CONTRACTOR SHALL NOTIFY THE FOLLOWING 48 HOURS BEFORE DIGGING:

1.

VILLAGE OF WELLINGTON

2.

FLORIDA POWER AND LIGHT

3.

SOUTHERN BELL TELEPHONE

4.

ADELPHIA CABLE TV

5.

SUNSHINE STATE ONE CALL OF FLORIDA INC.
7.

VILLAGE OF WELLINGTON (VOW) WRITTEN SPECIFICATIONS AND STANDARD DETAILS (LATEST EDITION) ARE TO BE CONSIDERED PART OF THIS PROJECT AND CONSTRUCTION SHALL BE ENFORCED TO AT LEAST THESE MINIMUM STANDARDS.
8.

ALL MATERIAL MUST CONFORM TO APPROVED SHOP DRAWINGS. ANY CHANGES MUST BE APPROVED BY THE ENGINEER AND VOW PRIOR TO INSTALLATION. FAILURE OF THE INSPECTOR TO CALL TO THE ATTENTION OF THE CONTRACTOR ANY ITEM NOT IN CONFORMANCE WITH PLANS AND SPECS SHALL NOT CONSTITUTE ACCEPTANCE OF THE ITEM.
9.

VOW REPRESENTATIVES SHALL BE PRESENT DURING ALL OPERATIONS INVOLVING EXISTING UTILITIES.
10.

NO CONCRETE THRUST BLOCKS WILL BE ALLOWED. ALL JOINTS SHALL BE MECHANICALLY RESTRAINED AS REQUIRED BY THE VOW.
11.

NO SERVICE INTERRUPTIONS ARE ALLOWED FOR THIS PROJECT.
12.

ALL PIPING MUST BE INSTALLED DRY.
13.

MINIMUM COVER SHALL BE 36 INCHES FROM FINISH GRADE.

MINIMUM COVER UNDER DITCH/CANAL BOTTOMS SHALL BE 24 INCHES.

MAXIMUM COVER SHALL BE 42 INCHES FROM FINISHED GRADE.
14.

ALL PIPING PROPOSED FOR THIS PROJECT SHALL BE DIP.
15.

TAPPING SLEEVES & VALVES SHALL BE A MINIMUM OF 3 FEET FROM A PIPE JOINT AND SERVICE TAPS SHALL BE A MINIMUM OF 18 INCHES APART AND 18 INCHES FROM A BELL OR FITTING.
16.

AN APPROPRIATELY MARKED 6 INCH METALLIC BACKED INDICATOR TAPE IS REQUIRED OVER ALL PVC MAINS INSTALLED ONE (1) FOOT BELOW GRADE.
17.

ALL FIRE HYDRANTS SHALL MAINTAIN PROPER CLEAR ZONE PER PBC FIRE MARSHAL STANDARDS.
18.

PAVEMENT REPLACEMENT, INCLUDING CURB, GUTTERS, AND STRIPING SHALL OCCUR WITHIN SEVEN (7) WORKING DAYS FOLLOWING COMPLETION OF OPEN CUT WORK.
19.

ALL EXPOSED (ABOVE GRADE) DUCTILE IRON WATER MAIN SHALL BE COLOR CODED TNEMEC SAFETY BLUE. FOR EXPOSED FIRE LINE DUCTILE IRON PIPING COLOR SHALL BE TNEMEC SAFETY RED.
20.

ALL BACKFLOW ASSEMBLIES MUST BE REDUCED PRESSURE PRINCIPLE BACKFLOW PREVENTERS (RPZ).
21.

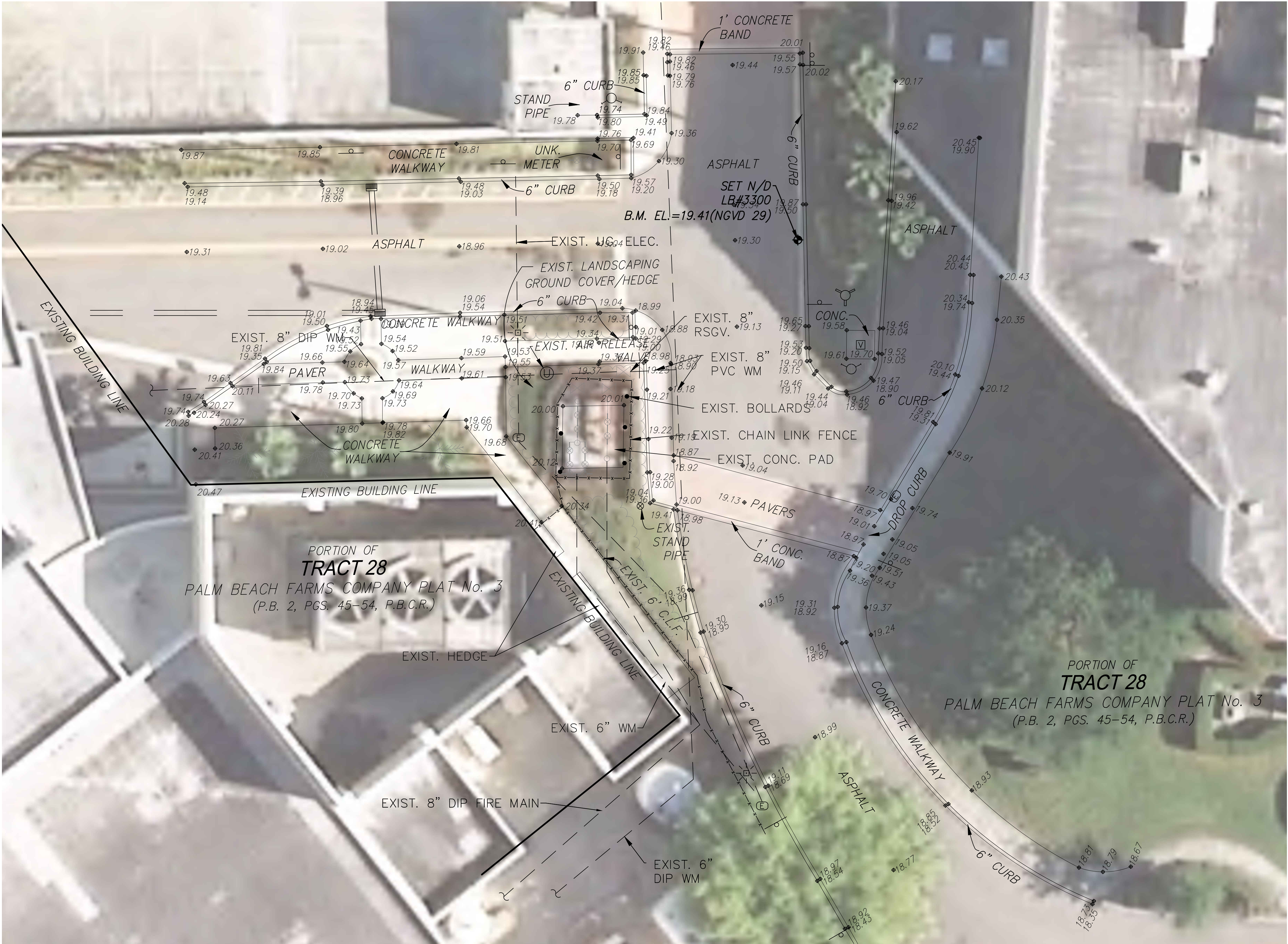
ALL ABOVE GRADE PIPING MUST BE D.I.P. SPECIAL CLASS 53, INSTALLED FROM MAIN AND THROUGH BACKFLOW ASSEMBLY.
22.

USE OF REPAIR SLEEVES AND/ OR REPAIR COUPLINGS IS PROHIBITED WITHOUT PRIOR APPROVAL FROM ENGINEER AND VOW.
23.

THE WATERMAIN IMPROVEMENTS SHOWN ON SHEETS C-02 AND C-03 IMPACT EXISTING LANDSCAPING AREAS. CONTRACTOR IS RESPONSIBLE FOR THE REMOVAL/REPLACEMENT OF ALL DAMAGED LANDSCAPING (GROUND COVER, HEDGE MATERIAL) AND ASSOCIATED MULCH IN KIND.

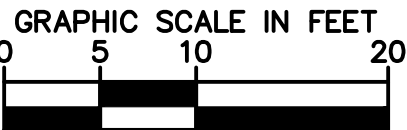
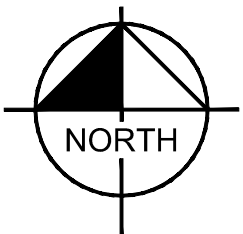
				<div><div><div>Kimley»Horn</div><div>1920 WEKIVA WAY SUITE 200, WEST PALM BEACH, FL 33411 PHONE: 561-845-0665 FAX: 561-863-8175 WWW.KIMLEY-HORN.COM CA 00000696</div></div><div><div><div>KHA PROJECT 144957012</div><div>DATE MARCH 2018</div><div>SCALE AS SHOWN</div><div>DESIGNED BY TCJ</div><div>DRAWN BY CE</div><div>CHECKED BY ____</div></div></div></div>	<div><div>WELLINGTON REGIONAL HOSPITAL WATER SERVICE MODIFICATIONS</div><div>PREPARED FOR WELLINGTON REGIONAL HOSPITAL</div><div>PALM BEACH COUNTYFLORIDA</div></div>	<div><div>LICENSED PROFESSIONAL</div><div>THOMAS C. JENSEN</div><div>FLORIDA LICENSE NUMBER 37290</div><div>DATE:</div></div>	<div>GENERAL NOTES</div>	<div>SHEET NUMBER G-02</div>
No.	REVISIONS	DATE	BY					

This document, together with the concepts and designs presented herein, is intended only for the specific purpose and client for which it was prepared. Reuse of and improper reliance on this document without written authorization and adaptation by Kimley-Horn and Associates, Inc. shall be without liability to Kimley-Horn and Associates, Inc.



SURVEYOR'S REPORT:

1. Reproductions of this Sketch are not valid without the signature and the original raised seal of a Florida Licensed Surveyor and Mapper. Additions or deletions to this survey map or report by other than the signing party is prohibited without written consent of the signing party.
2. No Title Opinion or Abstract to the subject property has been provided. It is possible that there are Deeds, Easements, or other instruments (recorded or unrecorded) which may affect the subject property. No search of the Public Records has been made by the Surveyor.
3. No underground improvements were located.
4. Elevations shown hereon are in feet and based on the National Geodetic Vertical Datum of 1929 (NGVD 1929).
5. Benchmark Description: Palm Beach County Engineering Benchmark "Earth", Elevation 20.363 (NGVD 1929).
6. Data shown hereon was compiled from instrument(s) of record and does not constitute a Boundary Survey.
7. Right-of-way lines and lot lines are graphically delineated from information provided by the client and/or obtained by this firm from recorded plats and/or right-of-way maps, at the time of the survey. This information is spatially placed within the digital file of the topographic survey, based on recovered monumentation to depict the lines relative to the topographic locations. This is not a boundary survey and the information should not be relied as such. It is strongly recommended that if the design is contingent on accurate boundary placement and especially prior to construction, a boundary survey should be performed to establish the lines. We will not be responsible for the misuse of the topographic survey for purposes it was not intended.
8. Symbols shown hereon and in the legend may have been enlarged for clarity. These symbols have been plotted at the center of the field location and may not represent the actual shape or size of the feature.
9. This map is intended to be displayed at a scale of 1:240 (1"=20').
10. Units of measurement are in U.S. Survey Feet and decimal parts thereof. Well identified features in this survey were field measured to a horizontal positional accuracy of 0.10'. The elevations on impervious surfaces were field measured to 0.03' and on ground surfaces to 0.1'.
11. Abbreviation Legend: B.M. = Benchmark; CONC. = Concrete; EL. = Elevation; INV. = Invert; NGVD = National Geodetic Vertical Datum; P.B. = Plat Book; PG. = Page; P.L.S. = Professional Land Surveyor; RCP = Reinforced Corrugated Pipe.



LEGEND

- BENCHMARK
- BACK FLOW PREVENTOR VALVE
- BOLLARD (UNLESS NOTED)
- CLEAN OUT
- CONCRETE LIGHT POLE
- CURB INLET
- DOUBLE DETECTOR CHECK VALVE
- DRAINAGE MANHOLE
- ELECTRIC SERVICE BOX
- EXISTING ELEVATION
- FIRE HYDRANT
- IRRIGATION CONTROL VALVE
- SIAMESE CONNECTION
- SIGN (UNLESS NOTED)
- UNKNOWN MANHOLE
- VAULT
- WATER VALVE

No.	REVISIONS	DATE	BY



1920 WEKIVA WAY SUITE 200, WEST PALM BEACH, FL 33411
PHONE: 561-845-0665 FAX: 561-863-8175
WWW.KIMLEY-HORN.COM CA 00000696

KHA PROJECT
144957012

DATE
MARCH 2018

SCALE AS SHOWN

DESIGNED BY TCJ

DRAWN BY CE

CHECKED BY

WELLINGTON REGIONAL HOSPITAL
WATER SERVICE MODIFICATIONS

PREPARED FOR
WELLINGTON REGIONAL HOSPITAL

PALM BEACH COUNTY FLORIDA

LICENSED PROFESSIONAL

THOMAS C. JENSEN

FLORIDA LICENSE NUMBER
37290

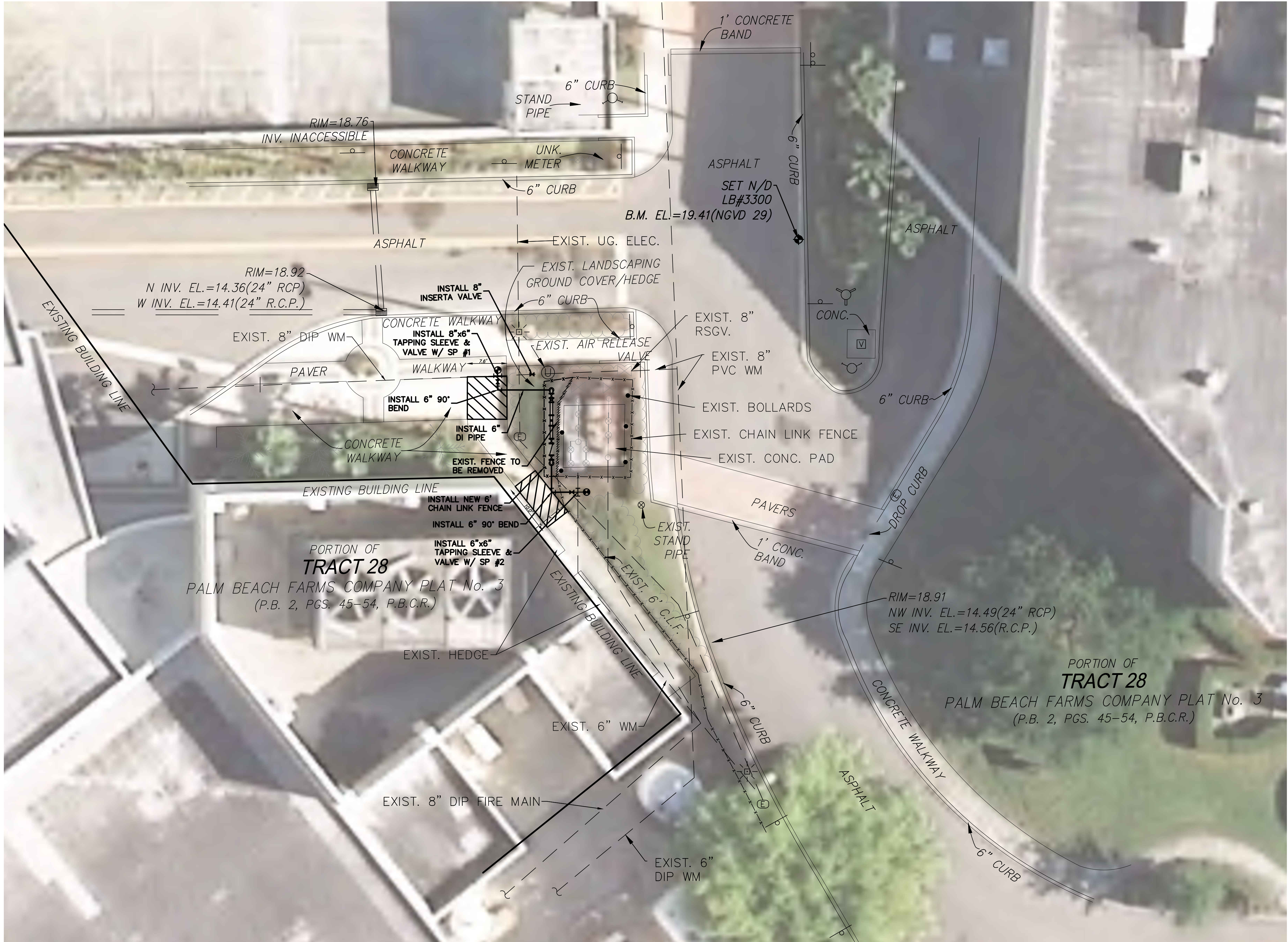
DATE:

EXISTING SITE SURVEY

SHEET NUMBER

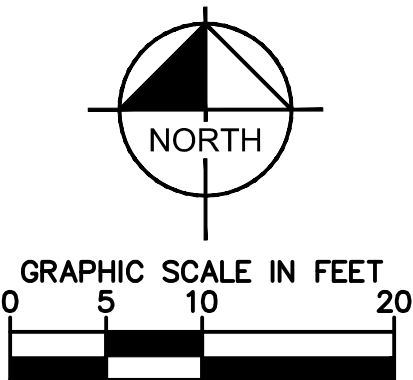
C-01


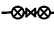

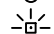

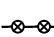




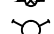
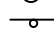





This document, together with the concepts and designs presented herein, is intended only for the specific purpose and client for which it was prepared. Reuse of and improper reliance on this document without written authorization and adaptation by Kimley-Horn and Associates, Inc. shall be without liability to Kimley-Horn and Associates, Inc.



NOTES
1. REFER TO SHEET C-03 FOR ENLARGED VIEW OF PIPING SITE AREA.

 CONCRETE SIDEWALK REMOVAL AND REPLACEMENT, MIN 4" THK.



LEGEND	
	BENCHMARK
	BACK FLOW PREVENTOR VALVE
	BOLLARD (UNLESS NOTED)
	CLEAN OUT
	CONCRETE LIGHT POLE
	CURB INLET
	DOUBLE DETECTOR CHECK VALVE
	DRAINAGE MANHOLE
	ELECTRIC SERVICE BOX
	EXISTING ELEVATION
	FIRE HYDRANT
	IRRIGATION CONTROL VALVE
	SIAMESE CONNECTION
	SIGN (UNLESS NOTED)
	UNKNOWN MANHOLE
	VAULT
	WATER VALVE

No.	REVISIONS	DATE	BY



1920 WEKIVA WAY SUITE 200, WEST PALM BEACH, FL 33411
PHONE: 561-845-0665 FAX: 561-863-8175
WWW.KIMLEY-HORN.COM CA 00000696

KHA PROJECT
144957012
DATE
MARCH 2018
SCALE AS SHOWN
DESIGNED BY TCJ
DRAWN BY CE
CHECKED BY

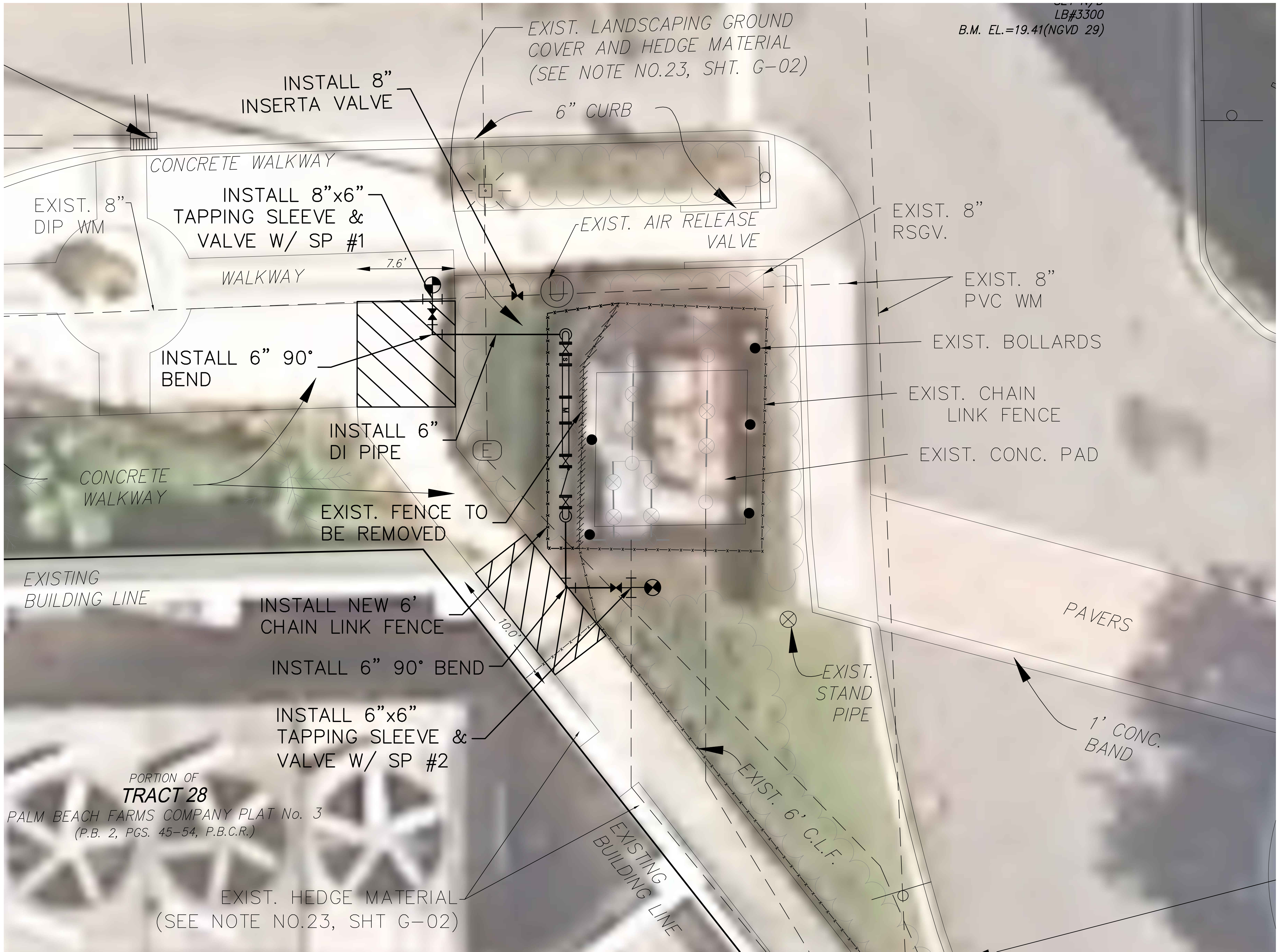
WELLINGTON REGIONAL HOSPITAL
WATER SERVICE MODIFICATIONS
PREPARED FOR
WELLINGTON REGIONAL HOSPITAL
PALM BEACH COUNTY FLORIDA

LICENSED PROFESSIONAL
THOMAS C. JENSEN
FLORIDA LICENSE NUMBER
37290
DATE:

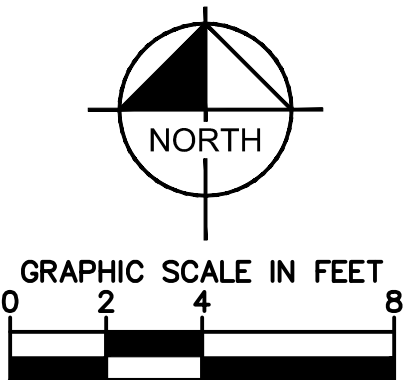
PROPOSED PIPING PLAN

SHEET NUMBER
C-02

This document, together with the concepts and designs presented herein, is intended only for the specific purpose and client for which it was prepared. Reuse of and improper reliance on this document without written authorization and adaptation by Kimley-Horn and Associates, Inc. shall be without liability to Kimley-Horn and Associates, Inc.



CONCRETE SIDEWALK
REMOVAL AND
REPLACEMENT, MIN 4" THK.



LEGEND	
	BENCHMARK
	BACKFLOW PREVENTOR VALVE
	BOLLARD (UNLESS NOTED)
	CLEAN OUT
	CONCRETE LIGHT POLE
	CURB INLET
	DOUBLE DETECTOR CHECK VALVE
	DRAINAGE MANHOLE
	ELECTRIC SERVICE BOX
	EXISTING ELEVATION
	FIRE HYDRANT
	IRRIGATION CONTROL VALVE
	SIAMESE CONNECTION
	SIGN (UNLESS NOTED)
	UNKNOWN MANHOLE
	VAULT
	WATER VALVE

No.	REVISIONS	DATE	BY

Kimley»Horn

1920 WEKIVA WAY SUITE 200, WEST PALM BEACH, FL 33411
PHONE: 561-845-0665 FAX: 561-863-8175
WWW.KIMLEY-HORN.COM CA 00000696

KHA PROJECT
144957012

DATE
MARCH 2018

SCALE AS SHOWN

DESIGNED BY TCJ

DRAWN BY CE

CHECKED BY

WELLINGTON REGIONAL HOSPITAL
WATER SERVICE MODIFICATIONS
PREPARED FOR
WELLINGTON REGIONAL HOSPITAL
PALM BEACH COUNTY FLORIDA

LICENSED PROFESSIONAL

THOMAS C. JENSEN

FLORIDA LICENSE NUMBER
37290

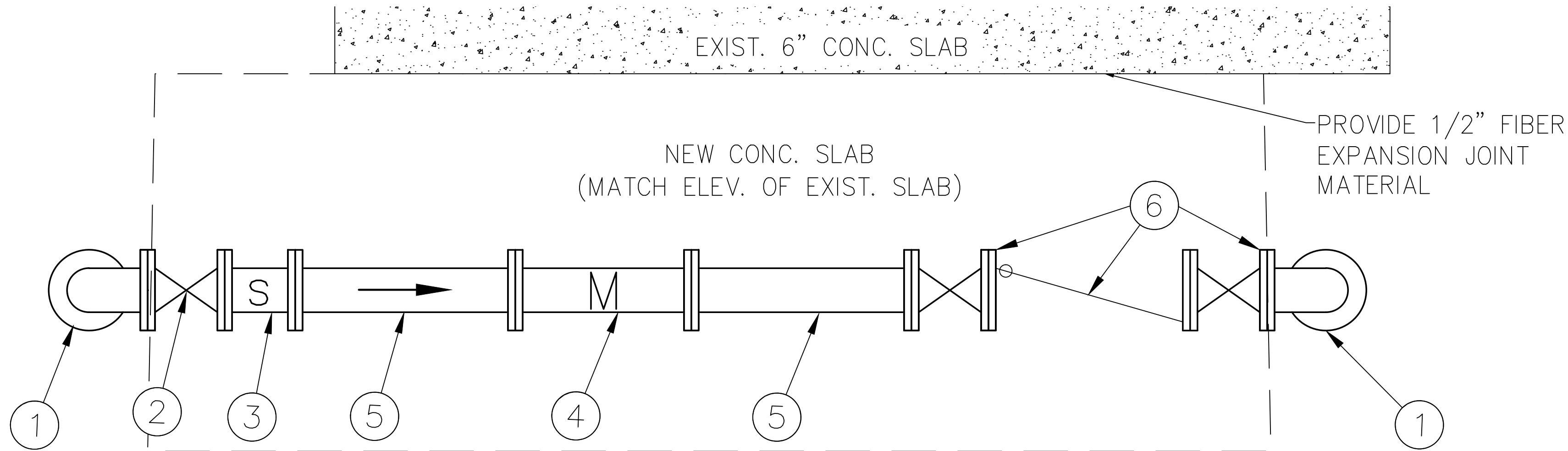
DATE:

PROPOSED PIPING PLAN
(ENLARGED)

SHEET NUMBER

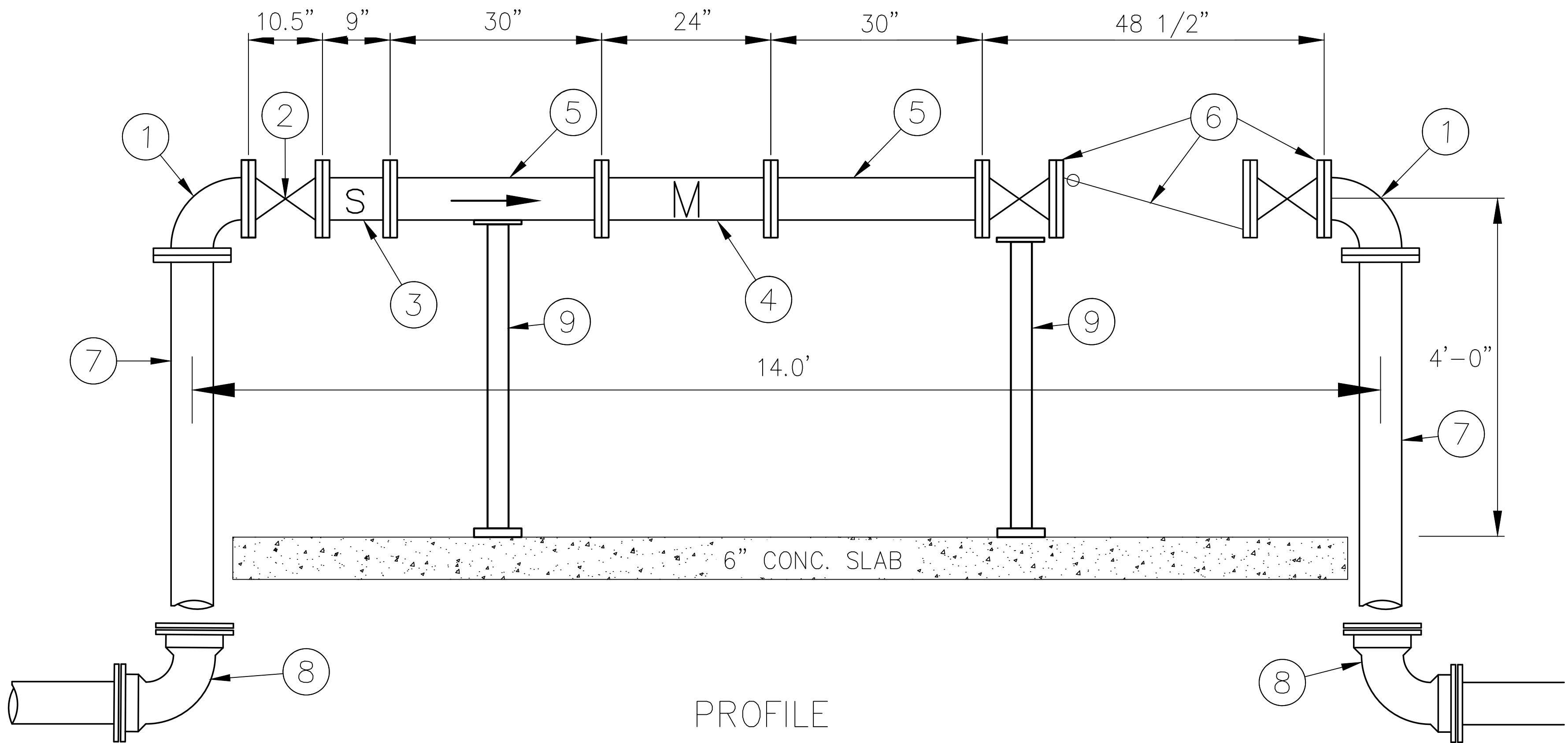
C-03

This document, together with the concepts and designs presented herein, is intended only for the specific purpose and client for which it was prepared. Reuse of and improper reliance on this document without written authorization and adaptation by Kimley-Horn and Associates, Inc. shall be without liability to Kimley-Horn and Associates, Inc.



PLAN

NOT TO SCALE



PROFILE

NOT TO SCALE

MATERIAL LIST

- ① 6" DIP 90° BEND (FLG'D)
- ② 6" DIP FLG'D GATE VALVE W/ HAND WHEEL
- ③ 6" STRAINER (FLG X FLG)
- ④ 6" BADGER METER (FLG X FLG)
- ⑤ 6" DIP FLG'D (MIN 2'-6")
- ⑥ 6" AMES (FLG'D) BACKFLOW PREVENTOR W/2-6" OSY GATE VALVES
- ⑦ 6" FLANGED X MJ LENGTH TO SUIT
- ⑧ 6" DIP MJ 90° BEND
- ⑨ PIPE SUPPORT (REFER TO DETAIL ON SHEET D-02)

No.	REVISIONS	DATE	BY

<h1>Kimley»»Horn</h1> <p>1920 WEKIVA WAY SUITE 200, WEST PALM BEACH, FL 33411 PHONE: 561-845-0665 FAX: 561-863-8175 WWW.KIMLEY-HORN.COM CA 00000696</p>	KHA PROJECT 144957012
	DATE MARCH 2018
	SCALE AS SHOWN
	DESIGNED BY TCJ
	DRAWN BY CE
	CHECKED BY

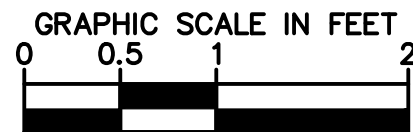
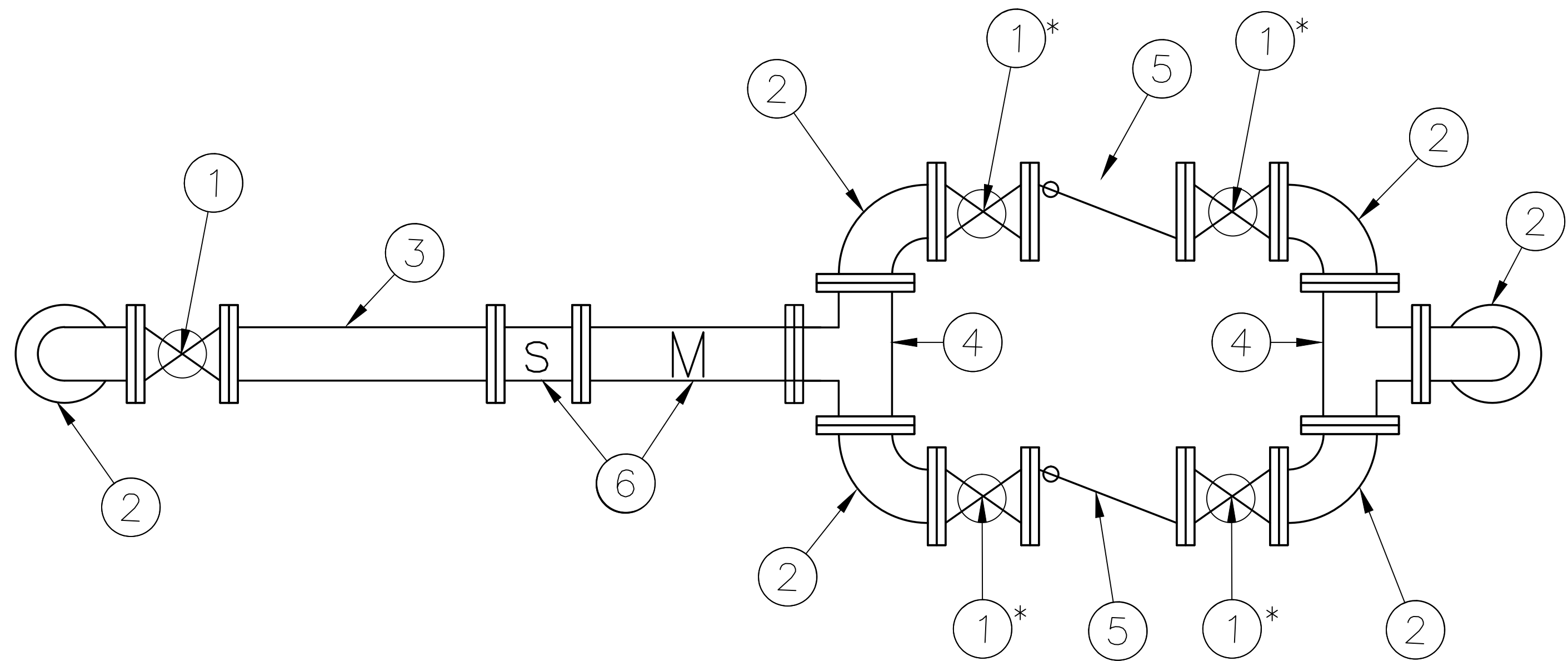
WELLINGTON REGIONAL HOSPITAL WATER SERVICE MODIFICATIONS PREPARED FOR WELLINGTON REGIONAL HOSPITAL PALM BEACH COUNTY FLORIDA

LICENSED PROFESSIONAL THOMAS C. JENSEN FLORIDA LICENSE NUMBER 37290 DATE:

NEW WATER SERVICE PIPING PLAN AND PROFILE
--

SHEET NUMBER C-04

This document, together with the concepts and designs presented herein, as an instrument of service, is intended only for the specific purpose and client for which it was prepared. Reuse of and improper reliance on this document without written authorization and adaptation by Kimley-Horn and Associates, Inc. shall be without liability to Kimley-Horn and Associates, Inc.

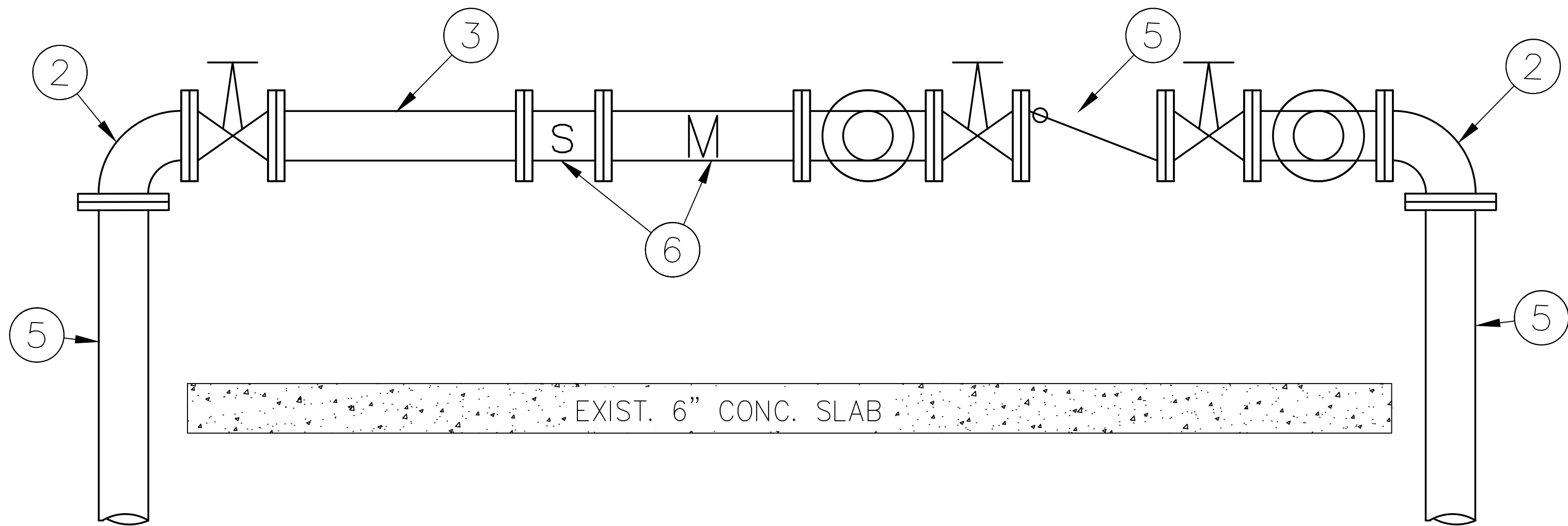


PLAN

*SEE NOTE NO. 2 BELOW.

EXISTING PIPING MATERIAL

- ① 6" FLANGED GATE VALVE WITH HAND WHEEL
- ② 6" FLANGED 90° BEND
- ③ 6" FLANGED SPOOL PIECE
- ④ 6" FLANGED TEE
- ⑤ 6" BACKFLOW PREVENTOR (AMES)
- ⑥ 6" SENSUS METER AND STRAINER



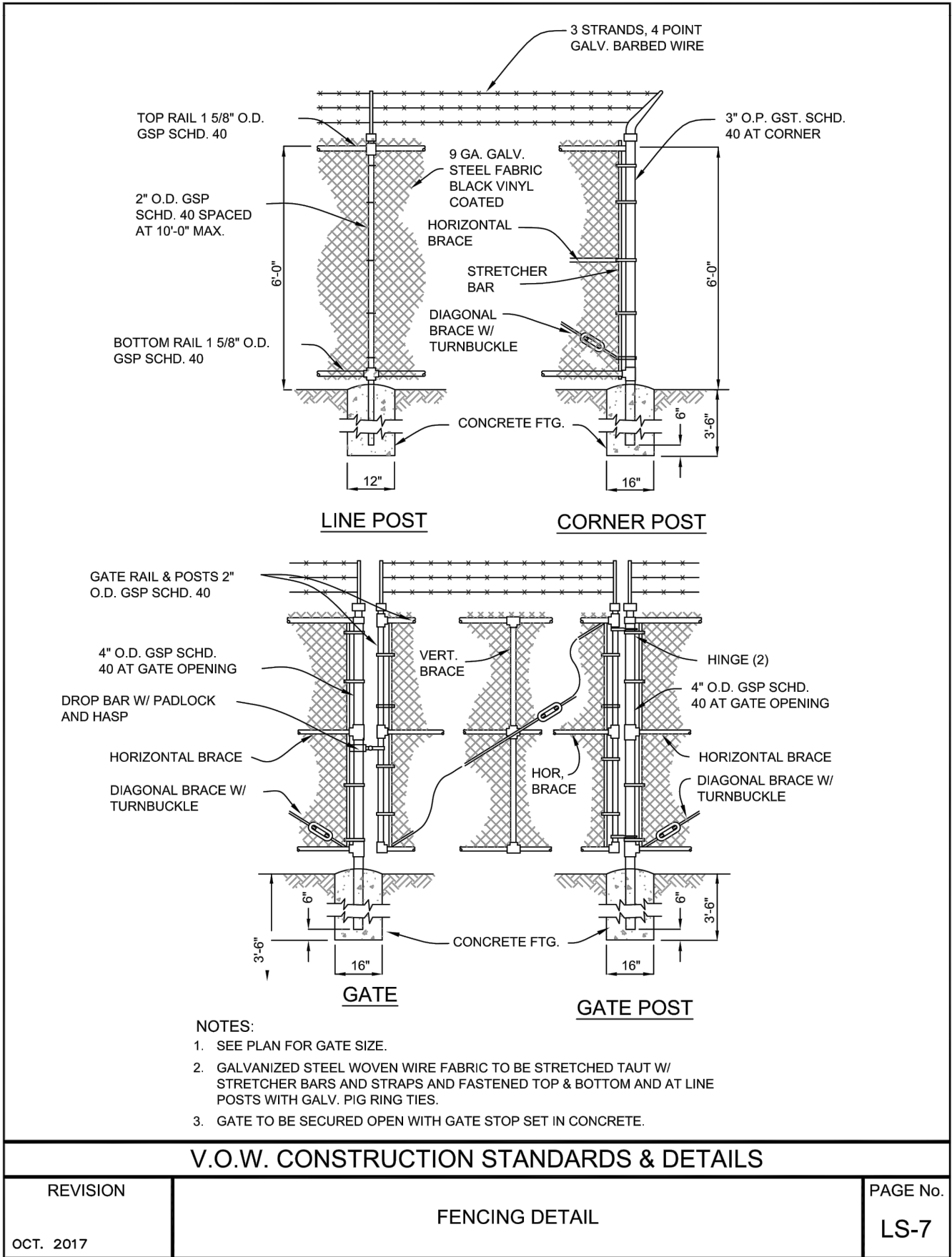
PROFILE

NOTES:

- EXISTING WATER SERVICE ASSEMBLY SHALL REMAIN IN PLACE, AND SHALL BE THE SYSTEM'S EMERGENCY BYPASS.
- THE FOUR (4) VALVES LABELED ABOVE AS ①* SHALL BE CLOSED AFTER NEW METER ASSEMBLY IS PLACED INTO SERVICE.
- EXISTING ABOVE GRADE PIPE SHALL BE COATED PER NOTE NO. 4 UNDER PIPE AND FITTINGS, SHEET D-02.

				<div><div><div>Kimley»Horn</div><div>1920 WEKIVA WAY SUITE 200, WEST PALM BEACH, FL 33411 PHONE: 561-845-0665 FAX: 561-863-8175 WWW.KIMLEY-HORN.COM CA 00000696</div></div><div><div>KHA PROJECT 144957012</div><div>DATE MARCH 2018</div><div>SCALE AS SHOWN</div><div>DESIGNED BY TCJ</div><div>DRAWN BY CE</div><div>CHECKED BY</div></div><div>WELLINGTON REGIONAL HOSPITAL WATER SERVICE MODIFICATIONS PREPARED FOR WELLINGTON REGIONAL HOSPITAL PALM BEACH COUNTY FLORIDA</div><div><div>LICENSED PROFESSIONAL</div><div>THOMAS C. JENSEN</div><div>FLORIDA LICENSE NUMBER 37290</div><div>DATE:</div></div></div>	EXISTING WATER SERVICE PLAN AND PROFILE	SHEET NUMBER C-05
No.	REVISIONS	DATE	BY			

This document, together with the concepts and designs presented herein, as an instrument of service, is intended only for the specific purpose and client for which it was prepared. Reuse of and improper reliance on this document without written authorization and adaptation by Kimley-Horn and Associates, Inc. shall be without liability to Kimley-Horn and Associates, Inc.



CONSTRUCTION NOTES

1. THE CONTRACTOR SHALL MAINTAIN WATER SERVICE TO THE HOSPITAL AT ALL TIMES.
2. ALL WORKERS ARE REQUIRED TO CHECK IN AT THE HOSPITAL FRONT DESK FOR A RECORD AS TO WHO IS ON SITE. AT THE START OF EACH DAY, THE FOREMAN/SUPERINTENDENT ONLY NEEDS TO ADVISE THE FRONT DESK THAT THE CREW IS FINISHED FOR THE DAY.
3. THE NEW MASTER METER ASSEMBLY NEEDS TO BE COMPLETELY FINISHED, TESTED AND OPERATIONAL PRIOR TO WORK COMMENCING ON THE EXISTING METER ASSEMBLY, THAT IS BEING MODIFIED TO BE THE SYSTEM EMERGENCY BYPASS ASSEMBLY.
4. UPON ACCEPTANCE OF THE NEW MASTER METER ASSEMBLY, AND PLACEMENT OF IT INTO SERVICE, THE CONTRACTOR CAN THEN PROCEED WITH THE DEMOLITION OF THE EXISTING METER ASSEMBLY THAT IS BEING RETROFITTED INTO A METER EMERGENCY BYPASS ASSEMBLY.

VOW STANDARDS

1. This project shall adhere to all of requirements of the Water and Wastewater Construction Specifications and Standard Details Manual established by the Village of Wellington, latest edition.
2. The Contractor will be required to submit Wellington's Water/Sewer Approved Product List, latest edition, that is included in the back of the Manual of Standards noted above.

PIPE AND FITTINGS

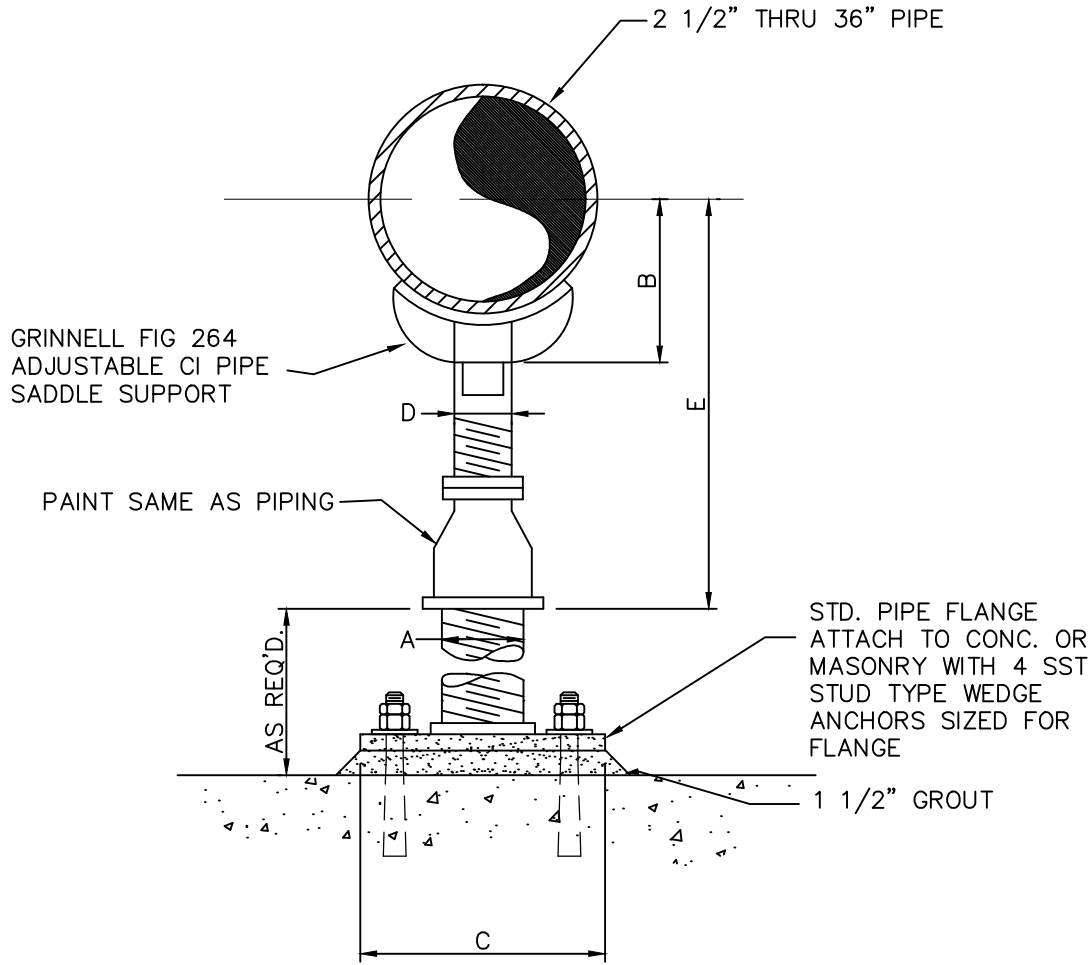
1. All above grade flanged piping shall be ductile iron, Special Class 53, conforming to ANSI/AWWA C115/A21.15, latest edition, with threaded ductile iron flanges. All flanges shall be ductile iron Class 150, ANSI/AWWA C104/A21.4, latest edition. All gaskets shall be full faced 1/8" black neoprene.
2. All buried pipe shall be ductile iron Pressure Class 350. Glands for mechanical joints shall be of ductile iron pipe. Fittings shall be compact fittings in accordance with AWWA C-153.
3. The internal surfaces of all water distribution piping/fittings shall be coated with a cement mortar of standard thickness in accordance with ANSI/AWWA C104/A21.4. The outside surface of all buried pipe/fittings shall be coated with a bituminous coating approximately one mill thick.
4. The exterior surface of all above ground pipe/fittings shall be coated as follows;
 - All ferrous metal surfaces shall be cleaned in accordance with SSPC-SP10.
 - The primer shall be Amercoat/Tnemec, with a minimum dry film thickness of 3.0 mils.
 - The intermediate coat shall be Amercoat/Tnemec, with a minimum dry film thickness of 5.0 mils.
 - The finish coat shall be Amercoat/Tnemec, with a minimum dry film thickness of 2.5 mils.

VALVES

1. All valves shall be resilient seated valves, conforming to ANSI/AWWA C515, latest edition.
2. All buried valves shall have a 2-inch operating nut, above grade valves shall have a handwheel.
3. The InsertValve assembly shall be resilient seat type meeting ANSI/AWWA C515 standards, with a 2-inch operating nut per the manufacturer's listed in the Village's Approved Product List.
4. The meter assembly shall include a new reduced pressure backflow assembly that will be complete with two (2) OSY flanged resilient seated gate valve. The backflow preventor assembly shall be manufactured by Ames Series 4000SS.

METER

1. The new meter assembly and plate strainer shall be a Badger Meter, Recordall Compound Series Meter (6-inches). **Note that the meter assembly and associated strainer shall be purchased by the Village and installed by the contractor.**



PIPE SUPPORT DETAIL

SCALE: N.T.S.

PIPE SIZE	DIMENSION TABLE					
	A	B	C	D	E	
					MIN.	MAX.
2 1/2"	2 1/2"	3 1/2"	9"	1 1/2"	8"	13"
3"	2 1/2"	3 3/4"	9"	1 1/2"	8 1/4"	13 1/4"
3 1/2"	2 1/2"	4"	9"	1 1/2"	8 1/2"	13 1/2"
4"	3"	4 1/4"	9"	2 1/2"	9 1/4"	14"
5"	3"	4 7/8"	9"	2 1/2"	10"	14 3/4"
6"	3"	5 1/2"	9"	2 1/2"	10 1/2"	15 1/4"
8"	3"	6 7/8"	9"	2 1/2"	11 3/4"	16 1/2"
10"	3"	8 1/2"	9"	2 1/2"	13 1/2"	18 1/4"
12"	3"	9 15/16"	9"	2 1/2"	15"	19 3/4"
14"	4"	10 15/16"	11"	3"	16 1/4"	20 3/4"
16"	4"	12 3/8"	11"	3"	17 1/2"	22 1/4"
18"	6"	13 7/8"	13 1/2"	3 1/2"	19 1/2"	24"
20"	6"	15 3/8"	13 1/2"	3 1/2"	21"	25 1/2"
24"	6"	17 15/16"	13 1/2"	4"	23 3/4"	28 1/4"
30"	6"	21 5/16"	13 1/2"	4"	27"	31 1/2"
32"	6"	22 1/2"	13 1/2"	4"	28 1/4"	32 3/4"
36"	6"	24 1/2"	13 1/2"	4"	30 1/4"	34 3/4"

Kimley»Horn

1920 WEKIVA WAY SUITE 200, WEST PALM BEACH, FL 33411
PHONE: 561-845-0665 FAX: 561-863-8175
WWW.KIMLEY-HORN.COM CA 00000696

KHA PROJECT	144957012
DATE	MARCH 2018
SCALE	AS SHOWN
DESIGNED BY	TCJ
DRAWN BY	CE
CHECKED BY	_____

WELLINGTON REGIONAL HOSPITAL
WATER SERVICE MODIFICATIONS

PREPARED FOR
WELLINGTON REGIONAL HOSPITAL

PALM BEACH COUNTY

FLORIDA

LICENSED PROFESSIONAL

THOMAS C. JENSEN

FLORIDA LICENSE NUMBER
37290

DATE:

STANDARD DETAILS AND NOTES

SHEET NUMBER

D-02