

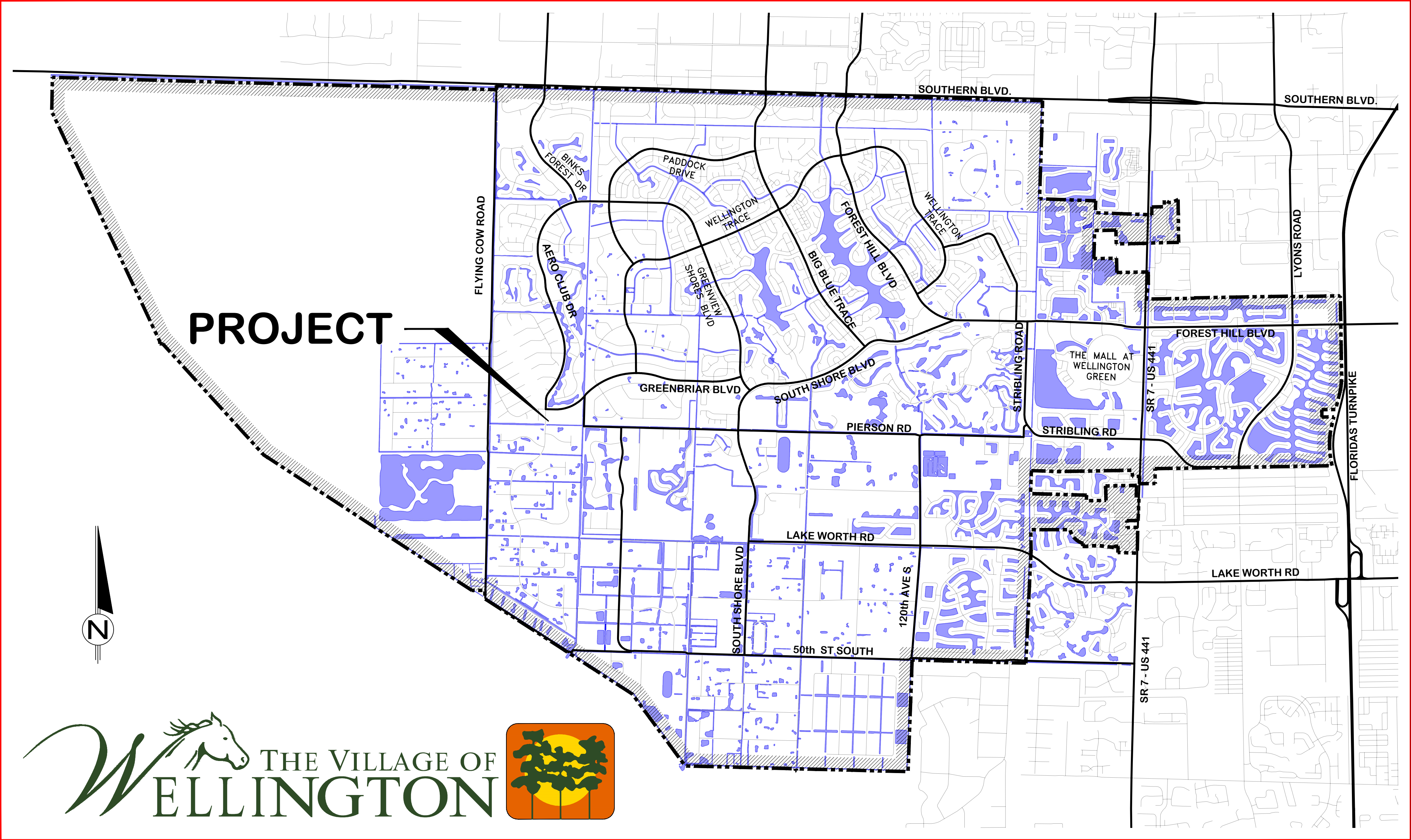
GREENBRIAR DOG PARK DOGWASH IMPROVEMENTS

VILLAGE COUNCIL
ANNE GERWIG - MAYOR
MICHAEL DRAHOS - VICE MAYOR
JOHN McGOVERN - COUNCILMAN
MICHAEL J. NAPOLEONE - COUNCILMAN
TANYA SISKIND - COUNCILWOMAN

PAUL SCHOFIELD - VILLAGE MANAGER

DRAWING INDEX

SHEET NO.	DESCRIPTION
	COVER
1	DETAILS AND GENERAL NOTES
2	DETAILS
3	SPECIFICATIONS
4	CONSTRUCTION OPERATIONS LAYOUT
5	LAYOUT



VILLAGE MAP
1:3,000 SCALE

WELLINGTON STAFF
THOMAS J. LUNDEEN, P.E. - VILLAGE ENGINEER
JONATHAN REINSVOLD, P.E. - ENGINEER OF RECORD
ALYSSA DALLOO, EI - PROJECT MANAGER



REPRODUCTION:
ATTENTION IS DIRECTED TO THE FACT THAT THESE
PLANS MAY HAVE BEEN REDUCED IN SIZE BY
REPRODUCTION. THIS MUST BE CONSIDERED WHEN
OBTAINING SCALED DATA.

W:\Departments\Engineering\0_CAD\0_Projects\FY2017 Projects\Dog Park\Dog Park Trails\DOGWASH\COVER.dwg 5/8/2018 8:22 AM

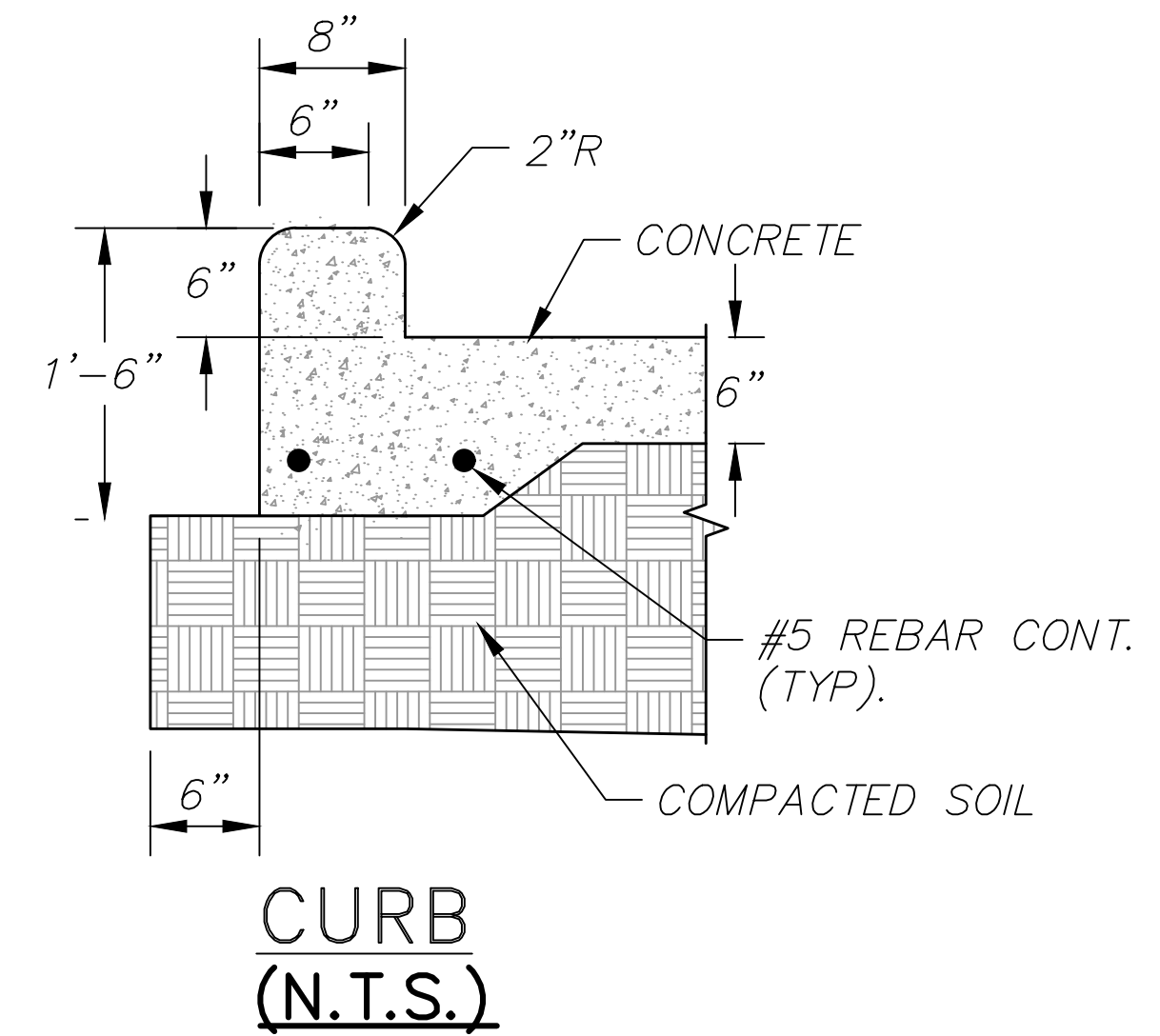
JONATHAN R. REINSVOLD
FLORIDA LICENSE
No. 74033

©COPYRIGHT 2017 VILLAGE OF
WELLINGTON. THIS DRAWING IS AN
INSTRUMENT OF SERVICE BY THE
VILLAGE OF WELLINGTON AND IS
NOT TO BE REPRODUCED IN PART
OR IN WHOLE BEYOND THE
INTENDED SCOPE OF USE.

THE VILLAGE OF
WELLINGTON
Engineering Department
12300 Forest Hill Boulevard, Wellington, Florida 33414

START DATE	11/2017	SHEET NO.	COVER
DRAWN	J.R.R.		
PROJECT ENGINEER	J.R.R.		
PROJECT MANAGER	J.R.R.		
CHECKED	T.J.L.		JOB NO. --

BID PLANS
08 / 13 / 2018



BID PLANS
08 / 13 / 2018

[illegible]

©COPYRIGHT 2017 VILLAGE OF WELLINGTON THIS DRAWING IS AN INSTRUMENT OF SERVICE BY THE VILLAGE OF WELLINGTON AND IS NOT TO BE REPRODUCED IN PART OR IN WHOLE BEYOND THE INTENDED SCOPE OF USE.

REINSVOLD, P.E.
FLORIDA LICENSE
No. 74033

 THE VILLAGE OF
ELLINGTON
Engineering Department
12300 Forest Hill Boulevard, Wellington, Florida 33414

DETAILS FOR GREENBRIAR DOG PARK IMPROVEMENTS

JOB NO. -----	<div style="border: 1px solid black; width: 100px; height: 100px; position: relative;"> <div style="position: absolute; top: 0; left: 0; width: 50%; height: 50%; text-align: center; line-height: 50px;">2</div> <div style="position: absolute; bottom: 0; right: 0; width: 50%; height: 50%; text-align: center; line-height: 50px;">4</div> </div>		DATE	TIME
			DRAWN	J.R.R.
			PROJECT ENGINEER	J.R.R.
			PROJECT MANAGER	J.R.R.
			CHECKED	T.J.L.

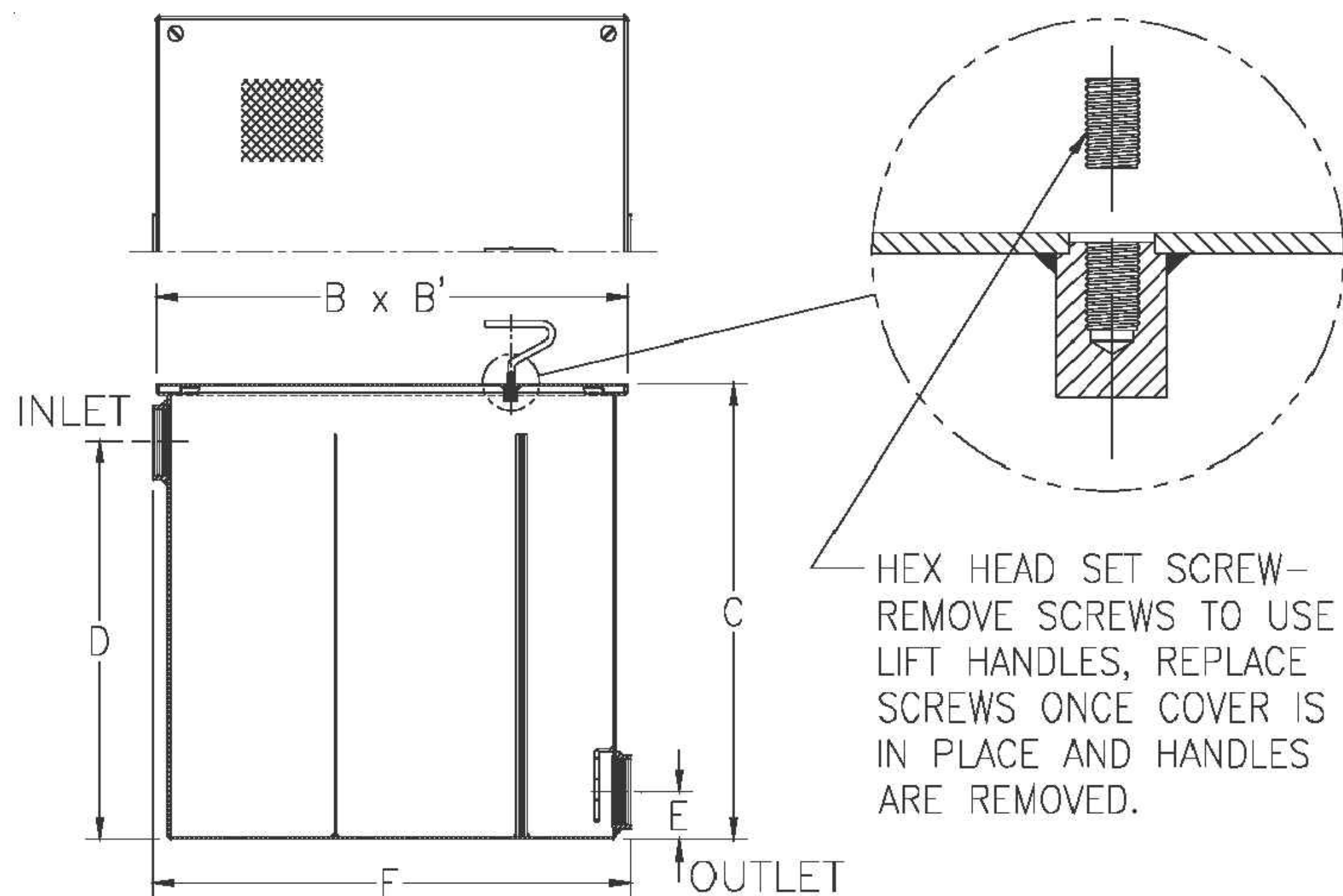


Z1185 LINT INTERCEPTOR

SPECIFICATION SHEET

TAG _____

Dimensional Data (inches and [mm]) are Subject to Manufacturing Tolerances and Change Without Notice



HEX HEAD SET SCREW -
REMOVE SCREWS TO USE
LIFT HANDLES, REPLACE
SCREWS ONCE COVER IS
IN PLACE AND HANDLES
ARE REMOVED.

Size No. of Machines	Inlet/Outlet Size in [mm]	Flow Rate G.P.M. [LPM]	Approx. Wt. Lbs. [kg]	Dimensions In Inches [mm]					
				B	B'	C	D	E	F
3	2 [51]	30 [113]	93 [42]	17 [432]	17 [432]	16-1/2 [419]	13-1/2 [343]	3-1/4 [82]	17-1/4 [438]
7	3 [76]	70 [265]	155 [70]	25 [635]	25 [635]	20 [508]	15-3/4 [400]	3-1/4 [82]	25-1/2 [648]
10	4 [102]	100 [378]	271 [123]	33 [838]	33 [838]	28 [711]	25 [635]	4 [102]	34 [864]
20	4 [102]	200 [756]	404 [183]	40 [1016]	40 [1016]	35 [889]	32 [813]	4 [102]	41 [1041]
30	6 [152]	300 [1134]	654 [297]	45 [1143]	45 [1143]	40 [1016]	36 [914]	5 [127]	46 [1168]
40	6 [152]	400 [1512]	723 [328]	48 [1219]	48 [1219]	43 [1092]	39 [991]	5 [127]	49 [1245]
50	6 [152]	500 [1890]	911 [414]	52 [1321]	52 [1321]	47 [1194]	43 [1092]	5 [127]	53 [1346]

ENGINEERING SPECIFICATION: ZURNZ1185

Acid Resistant Coated interior and exterior fabricated steel lint interceptor, non-skid secured cover with removable lift handle, aluminum lint intercepting secondary screen assembly, and permanent primary straining baffle with 3/8" [10 mm] diameter perforated holes. Regularly furnished with high inlet and low outlet. Note: size #3 and #7 covers are not furnished with a lift handle.

OPTIONS (Check/specify appropriate options)

PREFIXES

- ____ Z Acid Resistant Coated Fabricated Steel*
____ ZS All Type 304 Fabricated Stainless Steel

SUFFIXES

- ____ -E Acid Resistant Coated interior and exterior fabricated steel extension section
(Specify 'C' dimension required for recessed installation).
____ -RS Aluminum Screen Replacement Assembly

* Regularly furnished unless otherwise specified.

Zurn Industries, LLC | Specification Drainage Operation
1801 Pittsburgh Avenue, Erie, PA U.S.A. 16502 · Ph. 855-663-9876, Fax 814-454-7929
In Canada | Zurn Industries Limited
3544 Nashua Drive, Mississauga, Ontario L4V 1L2 · Ph. 905-405-8272, Fax 905-405-1292
www.zurn.com

Rev. H
Date: 7/14/16
C.N. No. 134798
Prod. | Dwg. No. Z1185



Z886-HD

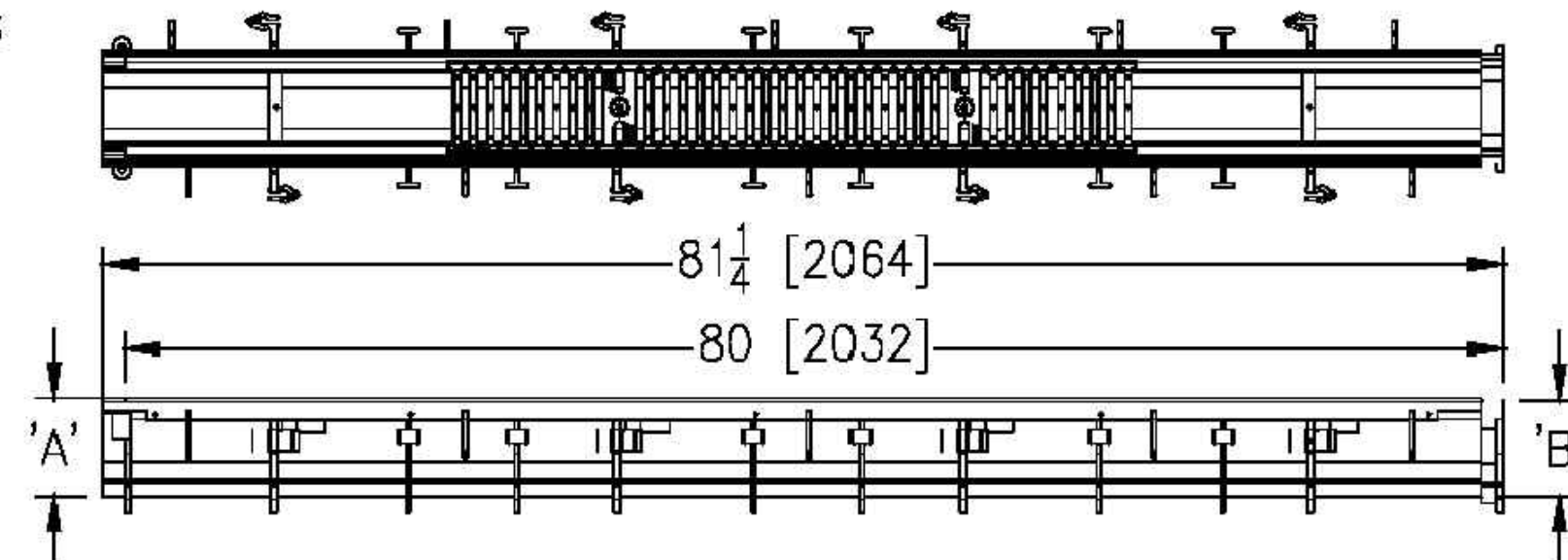
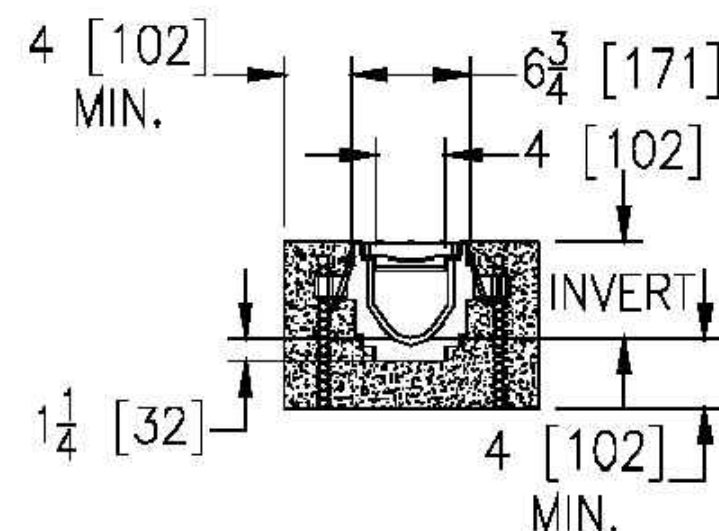
6-3/4 [171] WIDE REVEAL TRENCH DRAIN SYSTEM WITH HEAVY-DUTY FRAME ASSEMBLY

SPECIFICATION SHEET

TAG _____

Dimensional Data (inches and [mm]) are Subject to Manufacturing Tolerances and Change Without Notice

SPECIFYING ENGINEER IS RESPONSIBLE FOR
CONCRETE ENCASEMENT AND REINFORCING
BASED UPON APPLICATION AND LOCAL CODES



NOTE: + Actual Channel length is 81 1/4 [2064] to allow for overlap.

ENGINEERING SPECIFICATION: Zurn Z886-HD

Channels are 80" [2032 mm] long, 6-3/4" [171 mm] wide reveal and have a 4" [102 mm] throat. Modular channel sections are made of 0% water absorbent High Density Polyethylene (HDPE). Channels have a positive mechanical connection between channel sections that will not separate during the installation and mechanically lock into the concrete surround every 10" [254 mm]. Channels weigh less than 2.31 lbs. [1.05kg] per linear foot, have a smooth, 1-1/2" [38 mm] radiused self cleaning bottom with a Manning's coefficient of .009 and .75% or neutral 0% built in slope. Channels have rebar clips standard to secure trench in its final location. Channels provided with standard DGC grates that lock down to frame. Zurn 5.375" [137 mm] wide reveal Ductile Iron Slotted Grate conforming to ASTM specification A536-84, Grade 80-55-06. Ductile Iron grate is rated class C per the DIN EN1433 top load classifications. Supplied in 20" [508 mm] nominal lengths with 1/2" [13 mm] wide slots, and 3/4" [19 mm] bearing depth. Grate has an open area of 28.1 sq. in per ft. [59,463 sq. mm per meter]. The .105" [2.67 mm] thick Heavy-Duty Carbon Steel Frame Assembly conforms to ASTM specification A36 with 10 - 4" [102 mm] long concrete anchors per 80" [2032 mm]. Grate lockdown bars are to be integral to the frame. Frame supplied with powder coated finish. All welds must be performed by a certified welder per ASTM standard AWS D1.1. Frames produced in the U.S.A.

PREFIX OPTIONS (Check/specify appropriate options)

____ Z Six-foot, Eight-inch High Density Polyethylene (HDPE)*

SUFFIX OPTIONS (Check/specify appropriate options)

Outlet Adapters Add/Each

- ____ -E1 Closed End Cap
____ -E2 2 [51] No-Hub End Outlet
____ -E3 3 [76] No-Hub End Outlet
____ -E4 4 [102] No-Hub End Outlet
____ -E6 6 [152] No-Hub End Outlet
____ -U2 2 [51] No-Hub Bottom Outlet
____ -U3 3 [76] No-Hub Bottom Outlet
____ -U4 4 [102] No-Hub Bottom Outlet
____ -U6 6 [152] No-Hub Bottom Outlet

Frame Options

- ____ -CBF Black Acid Resistant Coated Top Frame
____ -LD Light Duty Grates on Heavy Duty Frame
____ -SW Sidewall Extension - 9 [229] High
____ -SW2 Sidewall Extension - 18 [457] High

Grate Options (Load Classifications are per DIN EN1433)

- ____ -BDC Black Acid Resistant Epoxy Coated Ductile Grate - Class C
____ -BDE Black Acid Resistant Epoxy Coated Ductile Grate - Class E
____ -BG Galvanized Ductile Iron Bar Grate - Class C
____ -DBG Ductile Iron Cast Bar Grate - Class C
____ -DC Ductile Iron Solid Cover - Class C
____ -DGC Ductile Iron Slotted Grate - Class C*
____ -DGE Ductile Iron Slotted Grate - Class E
____ -GDC Galvanized Ductile Iron Slotted Grate - Class C
____ -GDE Galvanized Ductile Iron Slotted Grate - Class E
____ -GHPDE Galvanized Heel-Proof Ductile Grate - Class E
____ -HPDE Heel-Proof Ductile Slotted Grate - Class E
____ -RFGC Reinforced Slotted Galvanized Grate - Class C
____ -RFSC Reinforced Slotted Stainless Steel Grate - Class C
____ -RPGC Reinforced Perforated Galvanized Grate - Class C
____ -RPGRC Reinforced Perforated Galvanized Reverse Punch Grate - Class C
____ -RPSC Reinforced Perforated Stainless Steel Grate - Class C
____ -RPSRC Reinforced Perforated Stainless Steel Reverse Punch Grate - Class C

Miscellaneous Options

- ____ -JC Joint Connector
____ -VP Vandal-Proof Lockdown

* Regularly furnished unless otherwise specified.

Zurn Industries, LLC | Specification Drainage Operation
1801 Pittsburgh Avenue, Erie, PA U.S.A. 16502 · Ph. 855-663-9876, Fax 814-454-7929
In Canada | Zurn Industries Limited
3544 Nashua Drive, Mississauga, Ontario L4V 1L2 · Ph. 905-405-8272, Fax 905-405-1292
www.zurn.com

Rev. F
Date: 1/26/2017
C.N. No. 136162
Prod. | Dwg. No. Z886-HD

Trench No.	'A'		'B'		Flow		
	Shallow Inv.	Deep Inv.	Shallow Inv.	Deep Inv.	(cfs)	(gpm)	(lps)
8601	3.50 [89]	4.10 [104]	4.10 [104]	4.10 [104]	0.21	93	6
8602	4.10 [104]	4.70 [119]	4.70 [119]	4.70 [119]	0.27	122	8
8603	4.70 [119]	5.30 [135]	5.30 [135]	5.30 [135]	0.34	152	10
8603N	5.30 [135]	5.90 [150]	5.90 [150]	5.90 [150]	0.41	183	12
8604	5.30 [135]	5.90 [150]	5.90 [150]	5.90 [150]	0.41	183	12
8605	5.90 [150]	6.50 [165]	6.50 [165]	6.50 [165]	0.48	214	13
8606	6.50 [165]	7.10 [180]	7.10 [180]	7.10 [180]	0.55	245	15
8606N	7.10 [180]	7.70 [196]	7.70 [196]	7.70 [196]	0.62	276	17
8607	7.10 [180]	7.70 [196]	7.70 [196]	7.70 [196]	0.62	276	17
8608	7.70 [196]	8.30 [211]	8.30 [211]	8.30 [211]	0.69	308	19
8609	8.30 [211]	8.90 [226]	8.90 [226]	8.90 [226]	0.76	339	21
8610	8.90 [226]	9.50 [241]	9.50 [241]	9.50 [241]	0.83	371	23
8611	9.50 [241]	10.10 [257]	10.10 [257]	10.10 [257]	0.90	403	25
8612	10.10 [257]	10.70 [272]	10.70 [272]	10.70 [272]	0.97	435	27
8612N	10.70 [272]	11.30 [287]	11.30 [287]	11.30 [287]	1.04	467	29
8613	10.70 [272]	11.30 [287]	11.30 [287]	11.30 [287]	1.04	467	29
8614	11.30 [287]	11.90 [302]	11.90 [302]	11.90 [302]	1.11	498	31
8615	11.90 [302]	12.50 [318]	12.50 [318]	12.50 [318]	1.18	530	33

Decorative Grate Options (Load Classifications are per DIN EN1433)

____ -SBG Stainless Steel Bar Grate - Class E

MADE in the U.S.A.

- ____ -BDE-USA Black Acid Resistant Epoxy Coated Ductile Grate - Class E
____ -DGC-USA Ductile Iron Slotted Grate - Class C
____ -DGE-USA Ductile Iron Slotted Grate - Class E
____ -GDC-USA Galvanized Ductile Slotted Grate - Class C
____ -GDE-USA Galvanized Ductile Slotted Grate - Class E
____ -GHPDE-USA Galvanized Heel-Proof Ductile Grate - Class E
____ -HPDE-USA Heel-Proof Ductile Slotted Grate - Class E
____ -PPC Plastic Perforated Grate - Class C

Miscellaneous Options

- ____ -DB Bottom Dome Strainer

REVISIONS		NO.	DATE	REMARKS	BY

©COPYRIGHT 2017 VILLAGE OF WELLINGTON. THIS DRAWING IS AN INSTRUMENT OF SERVICE BY AN ENGINEER AND IS NOT TO BE REPRODUCED IN PART OR IN WHOLE WITHOUT THE WRITTEN CONSENT OF THE VILLAGE OF WELLINGTON.

JONATHAN ROGER
Professional Engineer
No. 74033

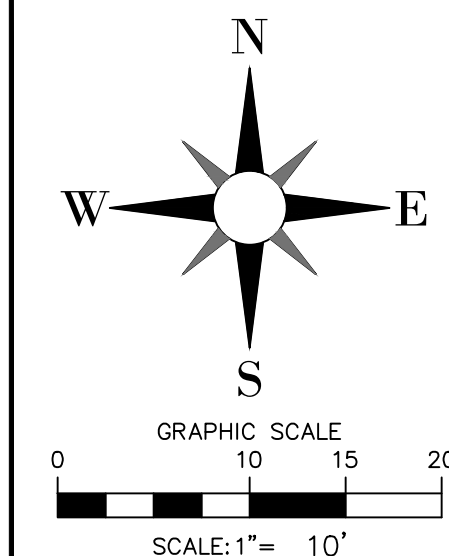


THE VILLAGE OF
WELLINGTON
Engineering Department
12300 Forest Hill Boulevard, Wellington, Florida 33414

W:\DEPARTMENTS\ENGINEERING\0_CAD\0_PROJECTS\FY2017 PROJECTS\DOG PARK\DOG PARK TRAILS\DOG WASH\ENG-LAYOUTS\DOG WASH.DWG

SPECIFICATIONS
FOR
GREENBRIAR DOG PARK IMPROVEMENTS

DATE	START DATE	END DATE	BY	CHECKED	DATE
11/01/2017			J.R.R.		
			J.R.R.		
			J.R.R.		
			J.R.R.		
			T.J.L.		



Know what's below.
Call before you dig.



CONSTRUCTION OPERATIONS LAYOUT FOR GREENBRIAR DOG PARK IMPROVEMENTS



JONATHAN ROGER
REINSVOLD, P.E.
FLORIDA LICENSE
No. 74033

©COPYRIGHT 2017 VILLAGE OF WELLINGTON THIS DRAWING IS AN INSTRUMENT OF SERVICE BY THE VILLAGE OF WELLINGTON AND IS NOT TO BE REPRODUCED IN PART OR IN WHOLE BEYOND THE INTENDED SCOPE OF USE.

REVISIONS				QRR	BY
1			ADD YARD DRAINS		
2			REMARKS		
3					
4					
5					
6					
7					
8					
9					
10					
11					
12					
13					
14					
15					
16					
17					
18					
19					
20					
21					
22					
23					
24					
25					
26					
27					
28					
29					
30					
31					
32					
33					
34					
35					
36					
37					
38					
39					
40					
41					
42					
43					
44					
45					
46					
47					
48					
49					
50					
51					
52					
53					
54					
55					
56					
57					
58					
59					
60					
61					
62					
63					
64					
65					
66					
67					
68					
69					
70					
71					
72					
73					
74					
75					
76					
77					
78					
79					
80					
81					
82					
83					
84					
85					
86					
87					
88					
89					
90					
91					
92					
93					
94					
95					
96					
97					
98					
99					
100					

