

PERMANENT WATERMAIN SAMPLING POINT CONSTRUCTION DRAWINGS

PREPARED FOR



PALM BEACH COUNTY, FLORIDA
OCTOBER 2018

VILLAGE COUNCIL

ANNE GERWIG, MAYOR
JOHN T. MCGOVERN, VICE MAYOR
MICHAEL J. NAPOLEONE, COUNCILMAN
MICHAEL DRAHOS, COUNCILMAN
TANYA SISKIND, COUNCILWOMAN

VILLAGE MANAGER

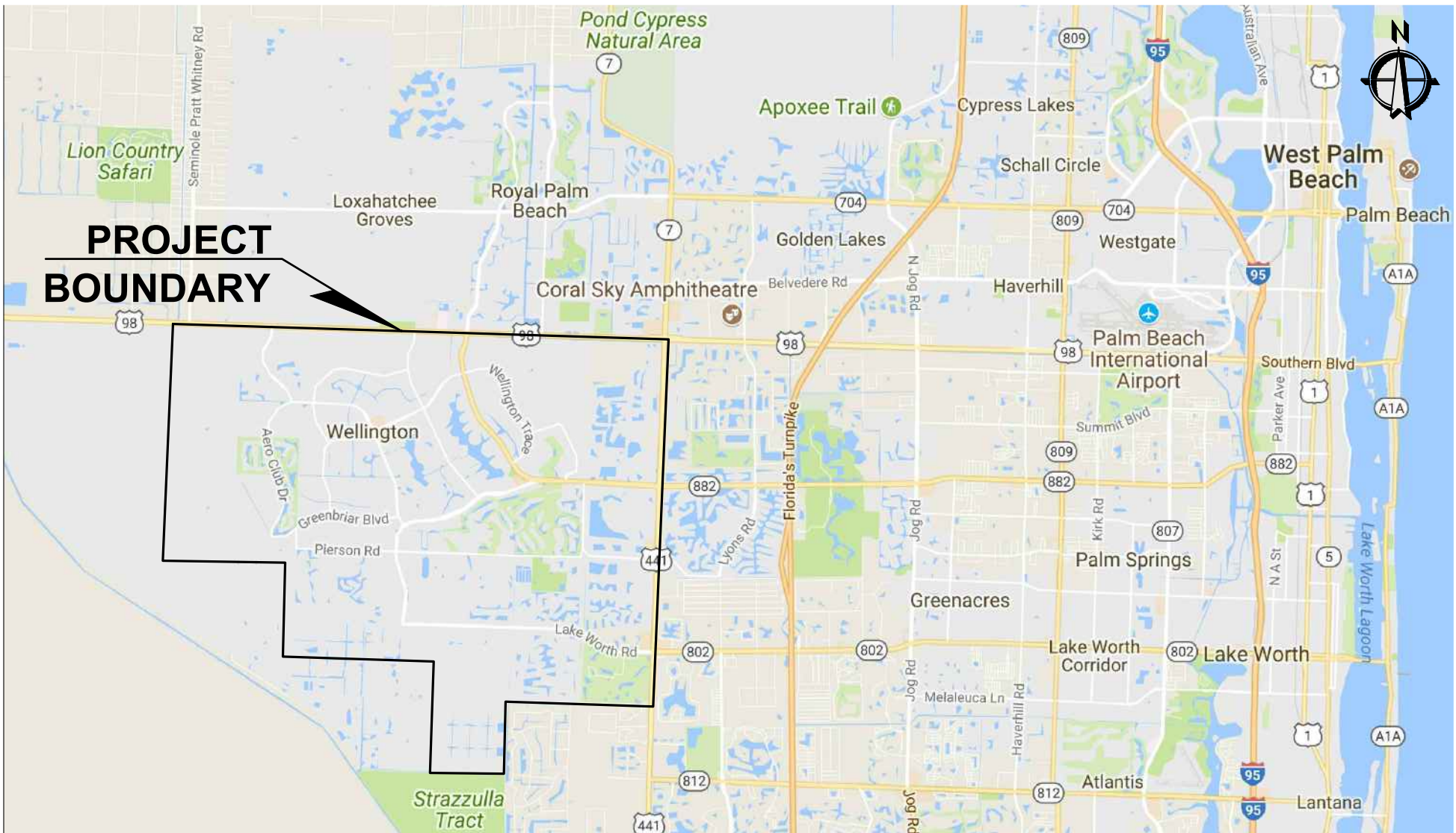
PAUL SCHOFIELD

UTILITIES DIRECTOR

SHANNON LAROCQUE, PE

INDEX OF SHEETS	
SHEET NUMBER	SHEET TITLE
C0-1	COVER
C0-2	SAMPLING POINT LOCATION MAP
C0-3	GENERAL NOTES
C1-1	SAMPLING POINTS 1 & 2
C1-2	SAMPLING POINTS 3 & 4
C1-3	SAMPLING POINTS 5 & 6
C1-4	SAMPLING POINTS 7 & 8
C1-5	SAMPLING POINTS 9 & 10
C1-6	SAMPLING POINTS 11 & 12
C1-7	SAMPLING POINTS 13 & 14
C1-8	SAMPLING POINTS 15 & 16
C1-9	SAMPLING POINTS 17 & 18
C1-10	SAMPLING POINTS 19 & 20
C1-11	SAMPLING POINTS 21 & 22
C1-12	SAMPLING POINTS 23 & 24
C1-13	SAMPLING POINTS 25 & 26
C1-14	SAMPLING POINTS 27 & 28
C1-15	SAMPLING POINTS 29 & 30
C1-16	SAMPLING POINTS 31 & 32
C1-17	SAMPLING POINTS 33 & 34
C1-18	SAMPLING POINTS 35 & 36
C1-19	SAMPLING POINTS 37 & 38
C1-20	SAMPLING POINTS 39 & 40
C1-21	SAMPLING POINTS 41 & 42
C1-22	SAMPLING POINTS 43 & 44
C1-23	SAMPLING POINTS 45 & 46
C1-24	SAMPLING POINTS 47 & 48
C1-25	SAMPLING POINTS 49 & 50
C1-26	SAMPLING POINTS 51 & 52
C1-27	SAMPLING POINTS 53 & 54
C1-28	SAMPLING POINTS 55 & 56
C1-29	SAMPLING POINTS 57 & 58
C1-30	SAMPLING POINTS 59 & 60
C1-31	SAMPLING POINTS 61 & 62
C1-32	SAMPLING POINTS 63 & 64
C1-33	SAMPLING POINTS 65 & 66
C1-34	SAMPLING POINTS 67 & 68
C1-35	SAMPLING POINTS 69 & 70
C5-1	DETAILS
TOTAL NO. OF SHEETS: 39	

**BID SET
OCTOBER 2018**



VICINITY MAP

N.T.S.

SECTION 13, TOWNSHIP 44, RANGE 40

BAR IS EQUAL TO ONE INCH
ON ORIGINAL DRAWING
ADJUST ALL SCALED
DIMENSIONS ACCORDINGLY

CADD FILE:
K:\well\wellsamp\DWG\1
SAMP001 CG-1.dwg

NO.	DATE	BY	REVISION
-----	------	----	----------

SEAL

JOHN P. CAIRNES
FLORIDA P.E. NO. 74737

DATE

FLORIDA E.B. NO. 48

MOCK•ROOS
CONSULTING ENGINEERS

5720 Corporate Way, West Palm Beach, Florida 33407 (561) 683-3113, www.MockRoos.com

FLORIDA L.B. NO. 48

FIELD: ----

DRAWN: TDT

DESIGN: JPC

APPR: GGG

SCALE: AS SHOWN

COVER

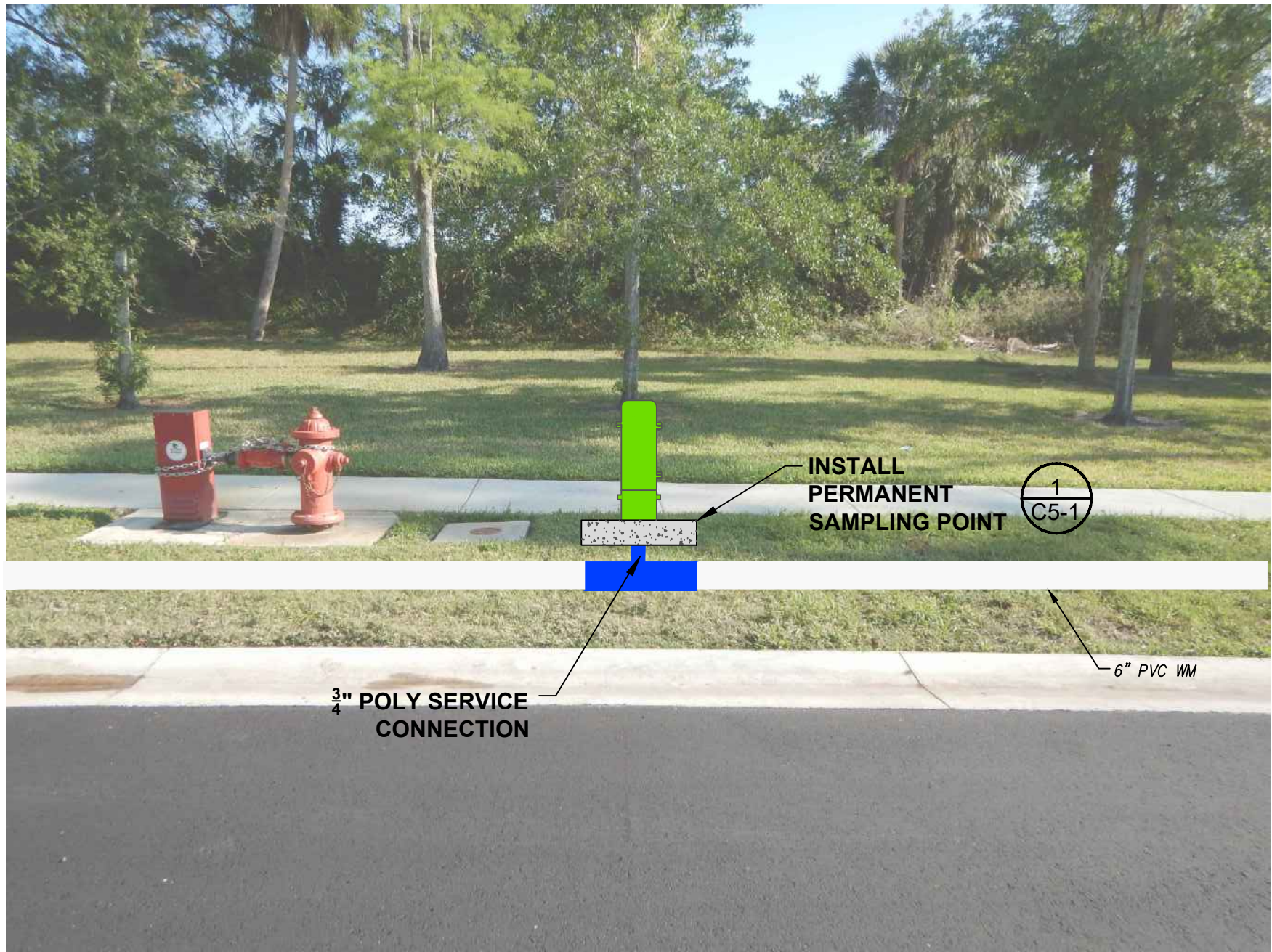
PERMANENT WATERMAIN
SAMPLING POINT
CONSTRUCTION DRAWINGS
VILLAGE OF WELLINGTON
PALM BEACH COUNTY, FLORIDA

DATE: OCTOBER 2018

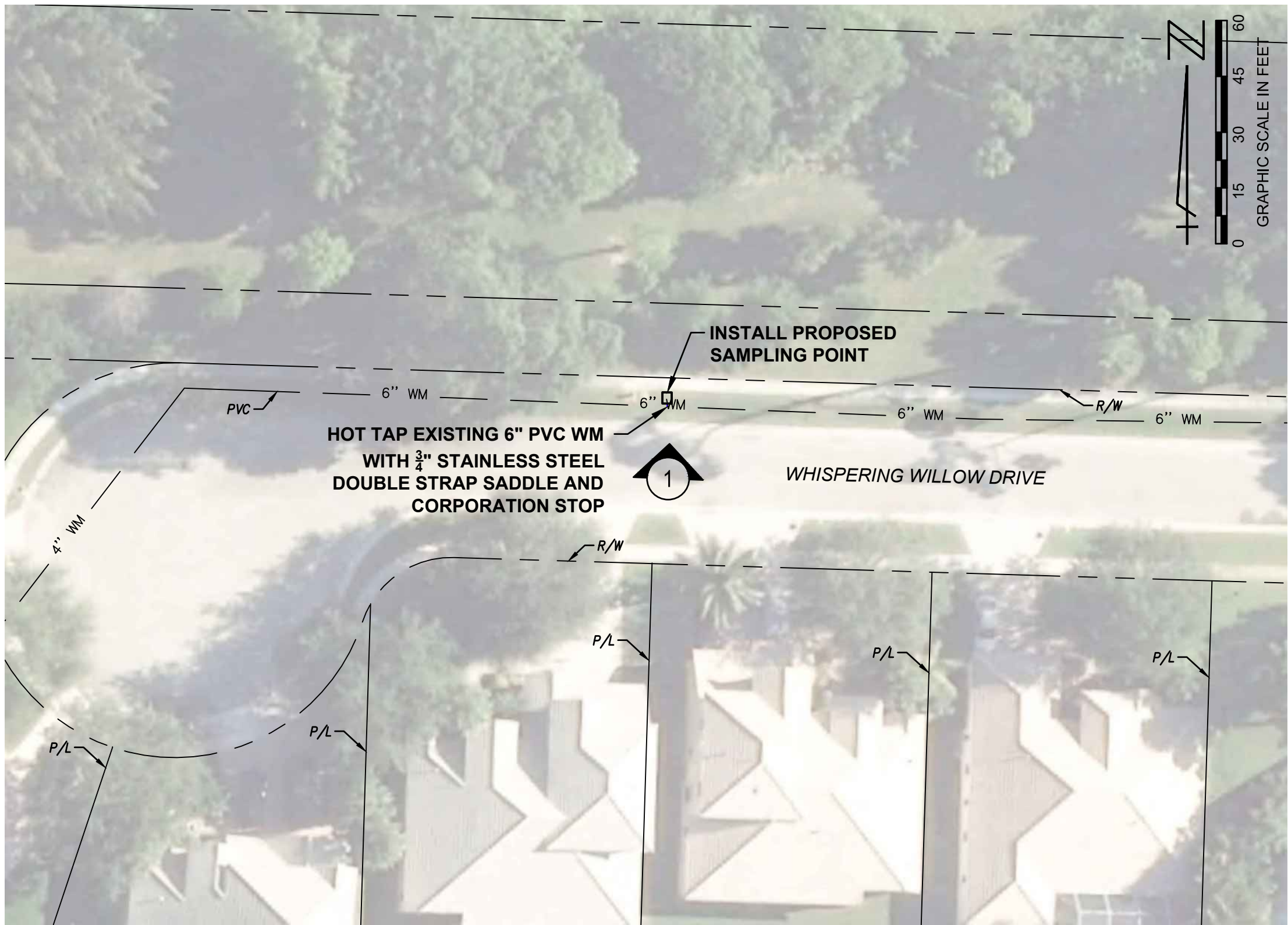
P.A. NO. B8703.00

DWG. NO. 44-40-13-03

SHEET: C0-1



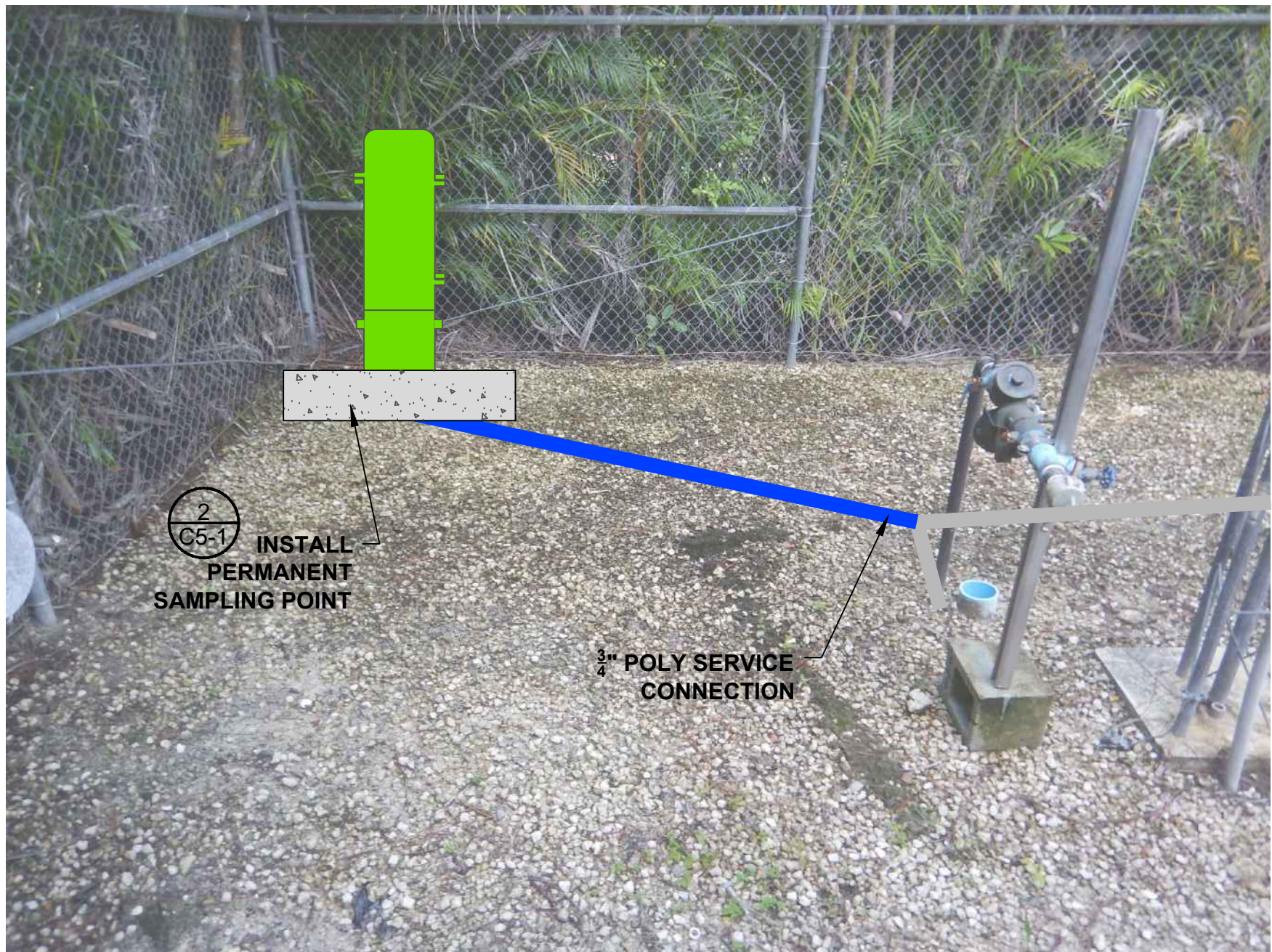
1 SAMPLING POINT 1 PROPOSED LOCATION
C1-1 WHISPERING WILLOW DRIVE, LOOKING NORTH



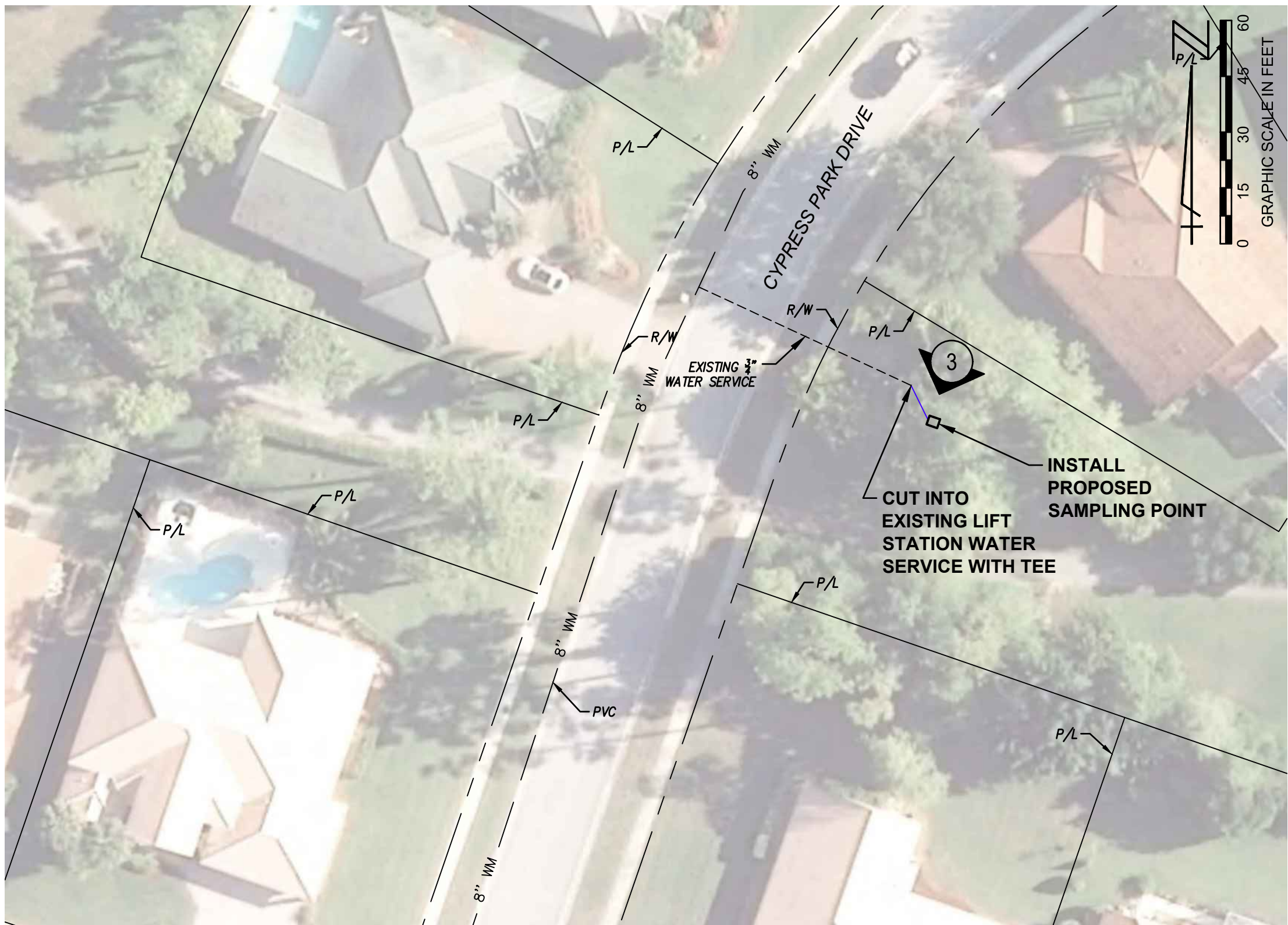
2 SAMPLING POINT 1 PROPOSED PLAN
C1-1 1" = 30'

SAMPLING POINT 1 DATA	
PROPOSED ADDRESS	15369 WHISPERING WILLOW DRIVE (ACROSS STREET)
LOCATION QUADRANT	NW (SHEET C0-2)
LIFT STATION NO.	N/A
VOW PARK	N/A
FIELD SERVICES NOTES	TAP WATERMAIN, 5' OF POLY, NEXT TO HYDRANT

NOTE:
LOCATION SHOWN IS APPROXIMATE AND INTENDED
TO SHOW GENERAL WORK AREA. OWNER WILL
STAKE EXACT LOCATION IN THE FIELD WITH THE
CONTRACTOR PRIOR TO COMMENCEMENT.



3 SAMPLING POINT 2 PROPOSED LOCATION
C1-1 LIFT STATION NO 62, LOOKING SOUTH



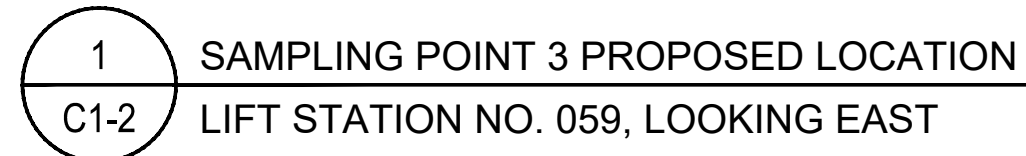
4 SAMPLING POINT 2 PROPOSED PLAN
C1-1 1" = 30'

SAMPLING POINT 2 DATA	
PROPOSED ADDRESS	15768 CYPRESS PARK DRIVE
LOCATION QUADRANT	NW (SHEET C0-2)
LIFT STATION NO.	62
VOW PARK	N/A
FIELD SERVICES NOTES	TIE INTO EXISTING SERVICE, NEXT TO BACKFLOW AT LS

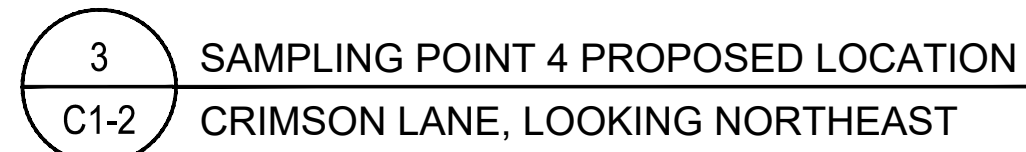
NOTE:
LOCATION SHOWN IS APPROXIMATE AND INTENDED
TO SHOW GENERAL WORK AREA. OWNER WILL
STAKE EXACT LOCATION IN THE FIELD WITH THE
CONTRACTOR PRIOR TO COMMENCEMENT.

BAR IS EQUAL TO ONE INCH
ON ORIGINAL DRAWING
ADJUST ALL SCALED
DIMENSIONS ACCORDINGLY

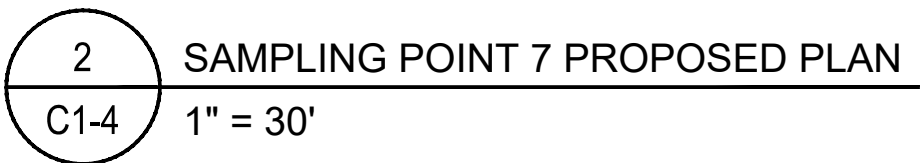
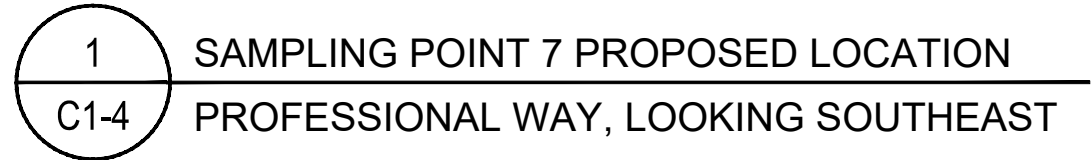
PLOT DATE: Oct 10, 2018 - 10:26am XREFS: C:\D\SA\PCS01_M0.dwg CADD FILE: K:\well\wellsamp\DWG\SA\PCS01_C1-1.dwg				SEAL JOHN P. CAIRNES FLORIDA P.E. NO. 74737		FLORIDA E.B. NO. 48 MOCK • ROOS CONSULTING ENGINEERS 5720 Corporate Way, West Palm Beach, Florida 33407 (561) 683-3113, www.MockRoos.com	FLORIDA L.B. NO. 48	FIELD: ---- DRAWN: TDT DESIGN: JPC APPR: GGG SCALE: AS SHOWN	SAMPLING POINTS 1 & 2 PERMANENT WATERMAIN SAMPLING POINT CONSTRUCTION DRAWINGS VILLAGE OF WELLINGTON PALM BEACH COUNTY, FLORIDA		DATE: OCTOBER 2018
	NO.	DATE	BY	REVISION	DATE				P.A. NO. B8703.00	DWG. NO. 44-40-13-03	SHEET: C1-1



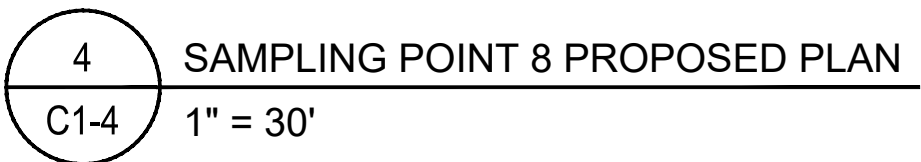
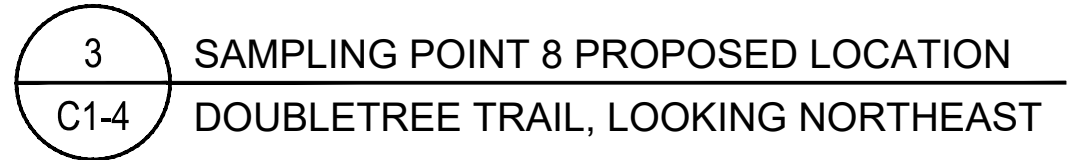
NOTE:
LOCATION SHOWN IS APPROXIMATE AND INTENDED
TO SHOW GENERAL WORK AREA. OWNER WILL
STAKE EXACT LOCATION IN THE FIELD WITH THE
CONTRACTOR PRIOR TO COMMENCEMENT.



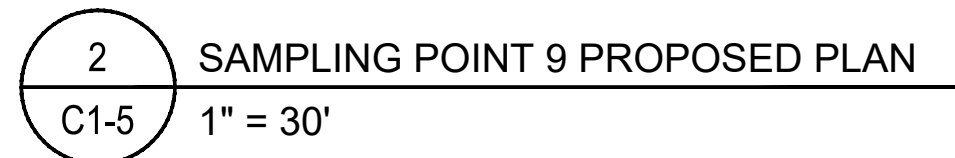
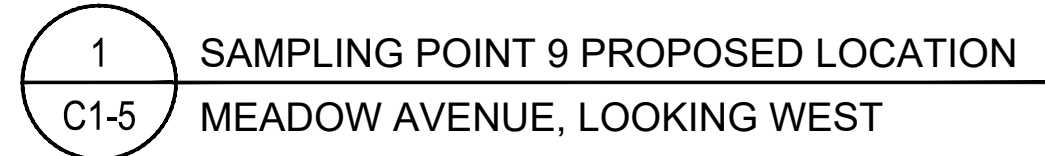
NOTE:
LOCATION SHOWN IS APPROXIMATE AND INTENDED
TO SHOW GENERAL WORK AREA. OWNER WILL
STAKE EXACT LOCATION IN THE FIELD WITH THE
CONTRACTOR PRIOR TO COMMENCEMENT.



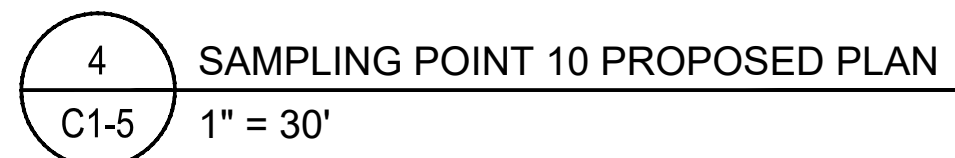
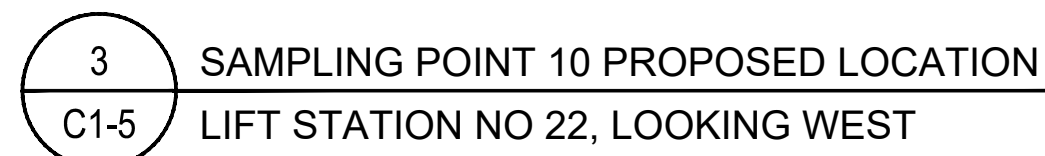
NOTE:
LOCATION SHOWN IS APPROXIMATE AND INTENDED TO SHOW GENERAL WORK AREA. OWNER WILL STAKE EXACT LOCATION IN THE FIELD WITH THE CONTRACTOR PRIOR TO COMMENCEMENT.



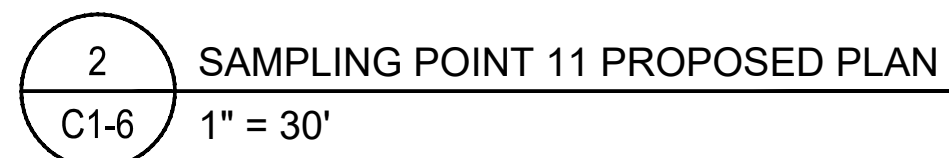
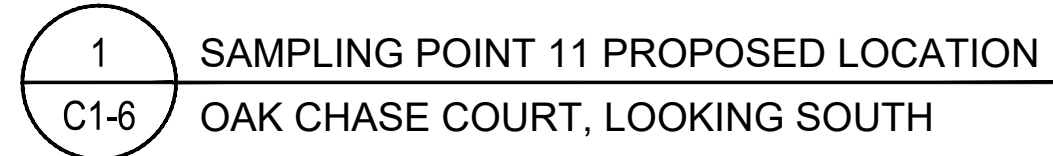
NOTE:
LOCATION SHOWN IS APPROXIMATE AND INTENDED
TO SHOW GENERAL WORK AREA. OWNER WILL
STAKE EXACT LOCATION IN THE FIELD WITH THE
CONTRACTOR PRIOR TO COMMENCEMENT.



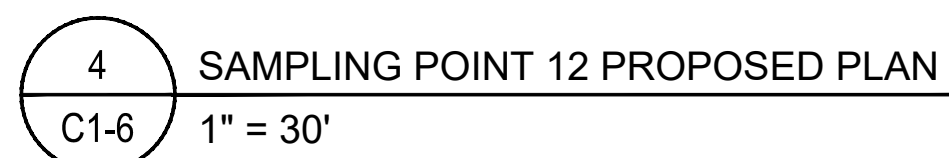
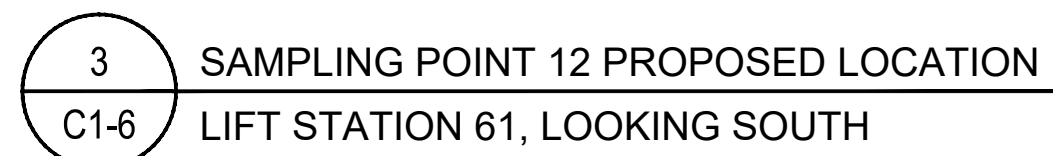
NOTE:
LOCATION SHOWN IS APPROXIMATE AND INTENDED
TO SHOW GENERAL WORK AREA. OWNER WILL
STAKE EXACT LOCATION IN THE FIELD WITH THE
CONTRACTOR PRIOR TO COMMENCEMENT.



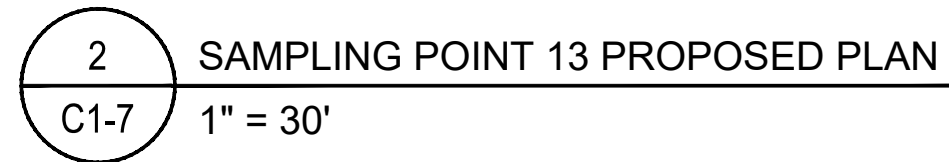
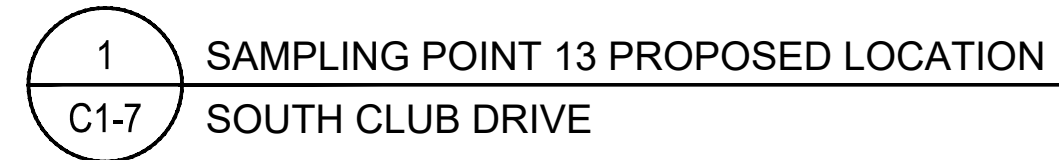
NOTE:
LOCATION SHOWN IS APPROXIMATE AND INTENDED
TO SHOW GENERAL WORK AREA. OWNER WILL
STAKE EXACT LOCATION IN THE FIELD WITH THE
CONTRACTOR PRIOR TO COMMENCEMENT.



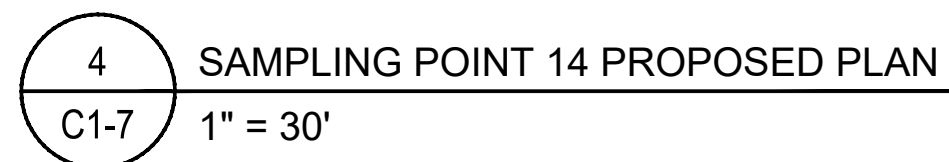
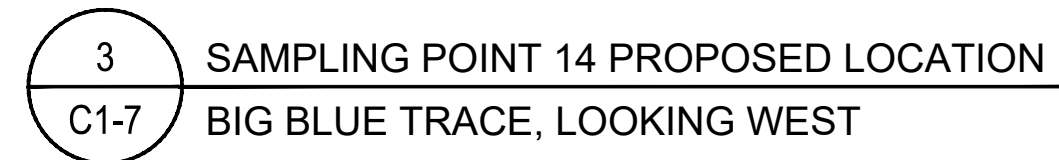
NOTE:
LOCATION SHOWN IS APPROXIMATE AND INTENDED
TO SHOW GENERAL WORK AREA. OWNER WILL
STAKE EXACT LOCATION IN THE FIELD WITH THE
CONTRACTOR PRIOR TO COMMENCEMENT.



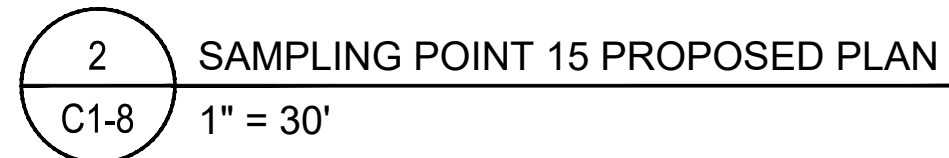
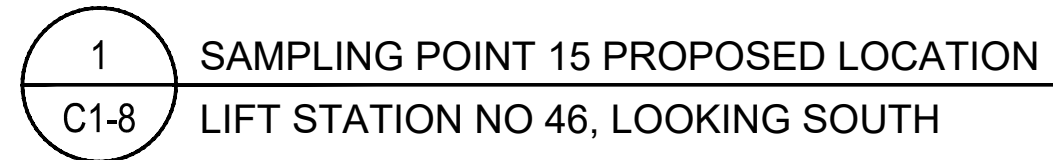
NOTE:
LOCATION SHOWN IS APPROXIMATE AND INTENDED
TO SHOW GENERAL WORK AREA. OWNER WILL
STAKE EXACT LOCATION IN THE FIELD WITH THE
CONTRACTOR PRIOR TO COMMENCEMENT.



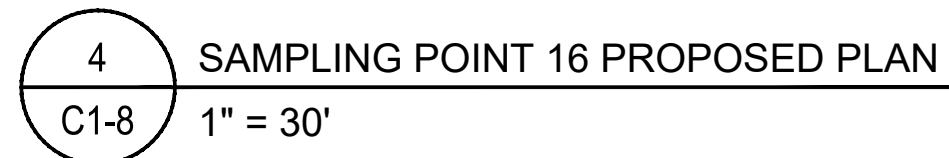
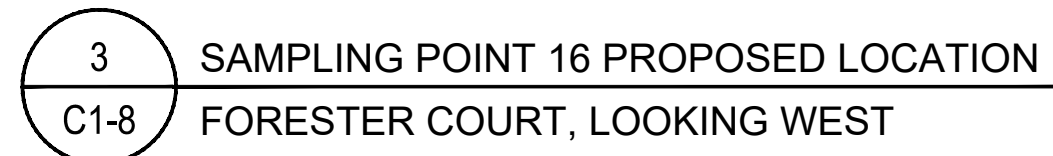
NOTE:
LOCATION SHOWN IS APPROXIMATE AND INTENDED
TO SHOW GENERAL WORK AREA. OWNER WILL
STAKE EXACT LOCATION IN THE FIELD WITH THE
CONTRACTOR PRIOR TO COMMENCEMENT.



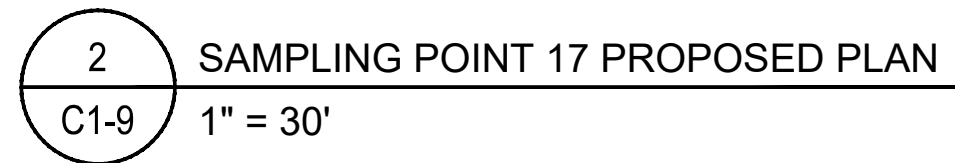
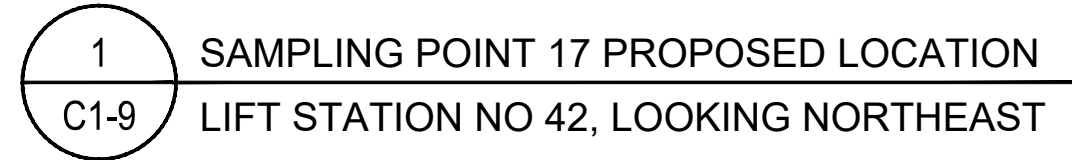
NOTE:
LOCATION SHOWN IS APPROXIMATE AND INTENDED
TO SHOW GENERAL WORK AREA. OWNER WILL
STAKE EXACT LOCATION IN THE FIELD WITH THE
CONTRACTOR PRIOR TO COMMENCEMENT.



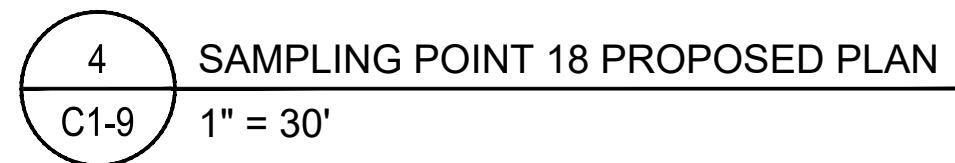
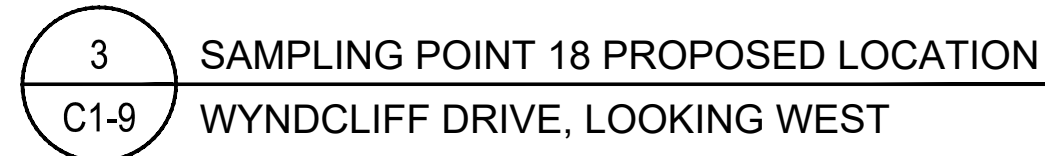
NOTE:
LOCATION SHOWN IS APPROXIMATE AND INTENDED
TO SHOW GENERAL WORK AREA. OWNER WILL
STAKE EXACT LOCATION IN THE FIELD WITH THE
CONTRACTOR PRIOR TO COMMENCEMENT.



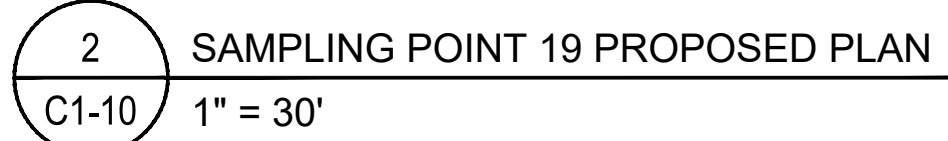
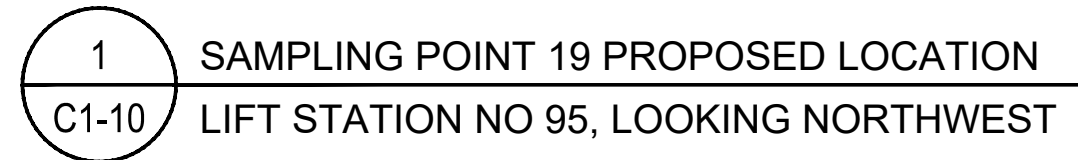
NOTE:
LOCATION SHOWN IS APPROXIMATE AND INTENDED
TO SHOW GENERAL WORK AREA. OWNER WILL
STAKE EXACT LOCATION IN THE FIELD WITH THE
CONTRACTOR PRIOR TO COMMENCEMENT.



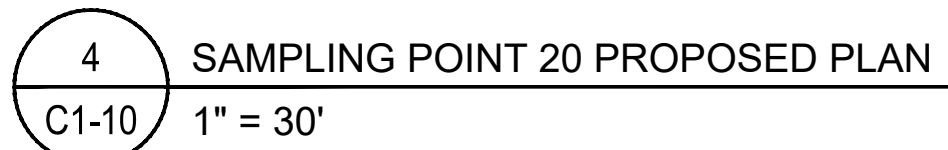
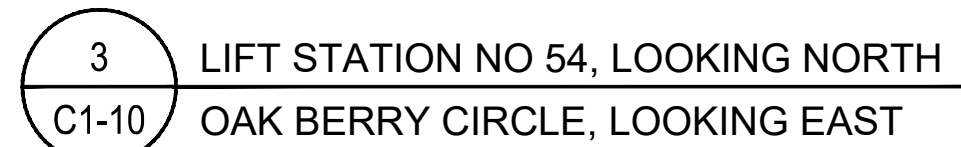
NOTE:
LOCATION SHOWN IS APPROXIMATE AND INTENDED
TO SHOW GENERAL WORK AREA. OWNER WILL
STAKE EXACT LOCATION IN THE FIELD WITH THE
CONTRACTOR PRIOR TO COMMENCEMENT.



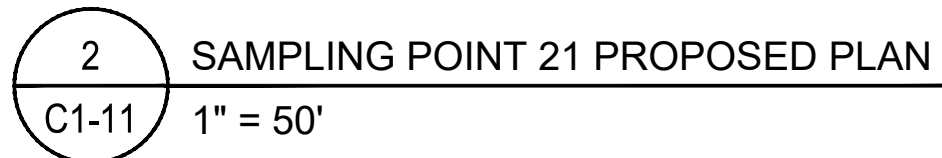
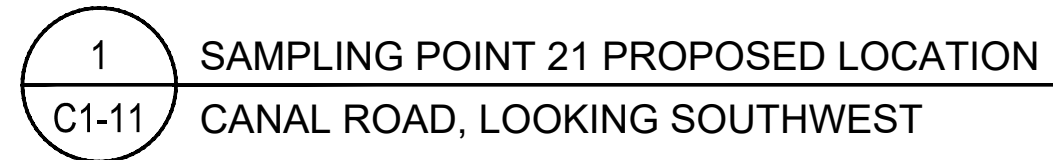
NOTE:
LOCATION SHOWN IS APPROXIMATE AND INTENDED
TO SHOW GENERAL WORK AREA. OWNER WILL
STAKE EXACT LOCATION IN THE FIELD WITH THE
CONTRACTOR PRIOR TO COMMENCEMENT.



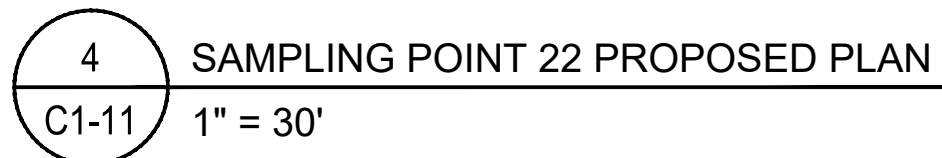
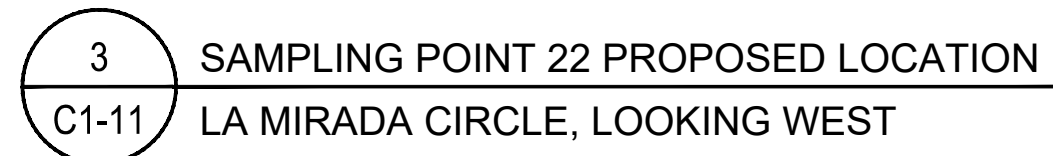
NOTE:
LOCATION SHOWN IS APPROXIMATE AND INTENDED
TO SHOW GENERAL WORK AREA. OWNER WILL
STAKE EXACT LOCATION IN THE FIELD WITH THE
CONTRACTOR PRIOR TO COMMENCEMENT.



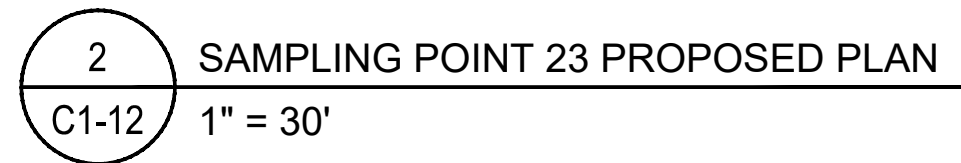
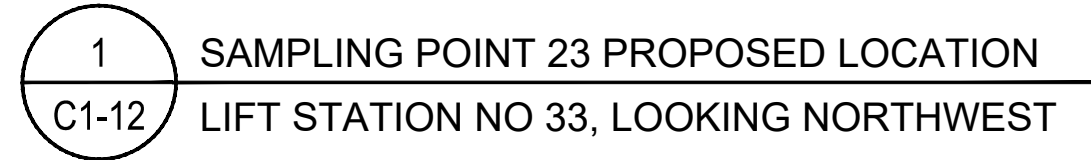
NOTE:
LOCATION SHOWN IS APPROXIMATE AND INTENDED
TO SHOW GENERAL WORK AREA. OWNER WILL
STAKE EXACT LOCATION IN THE FIELD WITH THE
CONTRACTOR PRIOR TO COMMENCEMENT.



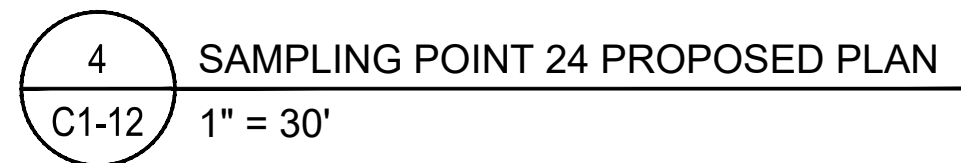
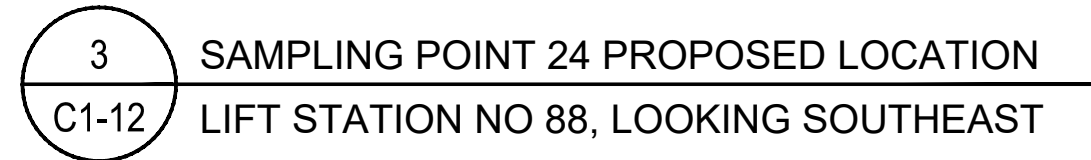
NOTE:
LOCATION SHOWN IS APPROXIMATE AND INTENDED
TO SHOW GENERAL WORK AREA. OWNER WILL
STAKE EXACT LOCATION IN THE FIELD WITH THE
CONTRACTOR PRIOR TO COMMENCEMENT.



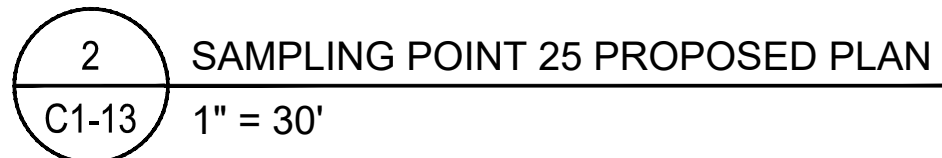
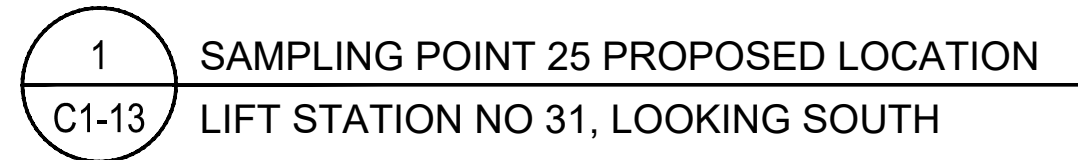
NOTE:
LOCATION SHOWN IS APPROXIMATE AND INTENDED
TO SHOW GENERAL WORK AREA. OWNER WILL
STAKE EXACT LOCATION IN THE FIELD WITH THE
CONTRACTOR PRIOR TO COMMENCEMENT.



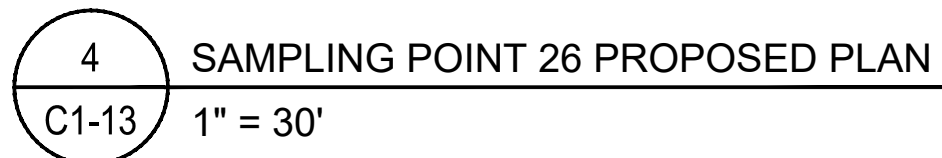
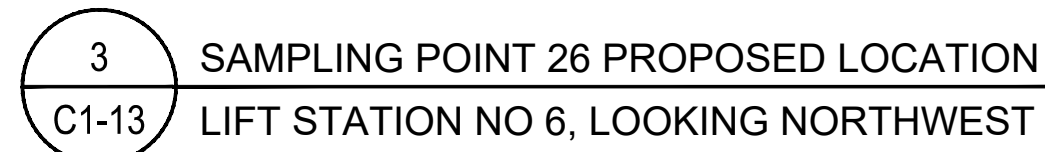
NOTE:
LOCATION SHOWN IS APPROXIMATE AND INTENDED
TO SHOW GENERAL WORK AREA. OWNER WILL
STAKE EXACT LOCATION IN THE FIELD WITH THE
CONTRACTOR PRIOR TO COMMENCEMENT.



NOTE:
LOCATION SHOWN IS APPROXIMATE AND INTENDED
TO SHOW GENERAL WORK AREA. OWNER WILL
STAKE EXACT LOCATION IN THE FIELD WITH THE
CONTRACTOR PRIOR TO COMMENCEMENT.



NOTE:
LOCATION SHOWN IS APPROXIMATE AND INTENDED
TO SHOW GENERAL WORK AREA. OWNER WILL
STAKE EXACT LOCATION IN THE FIELD WITH THE
CONTRACTOR PRIOR TO COMMENCEMENT.



NOTE:
LOCATION SHOWN IS APPROXIMATE AND INTENDED
TO SHOW GENERAL WORK AREA. OWNER WILL
STAKE EXACT LOCATION IN THE FIELD WITH THE
CONTRACTOR PRIOR TO COMMENCEMENT.

CADD FILE:
K:\welf\wellsamp\DWG\
SAMP01_C1-13.dwg

NO.	DATE	BY	REVISION
-----	------	----	----------

SEAL
JOHN P. CAIRNES FLORIDA P.E. NO. 74737
DATE

FLORIDA E.B. NO. 48

MOCK • ROOS
CONSULTING ENGINEERS

5720 Corporate Way, West Palm Beach, Florida 33407 (561) 683-3113, www.MockRoos.com

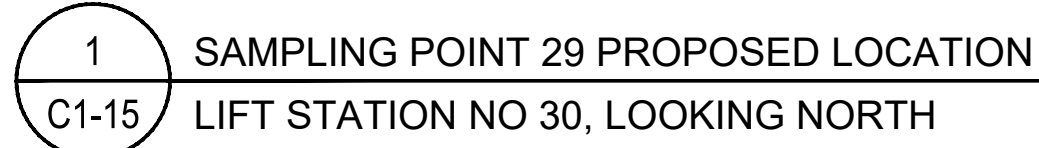
FLORIDA L.B. NO. 48

FIELD: ----
DRAWN: TDT
DESIGN: JPC
APPR: GGG
SCALE: AS SHOWN

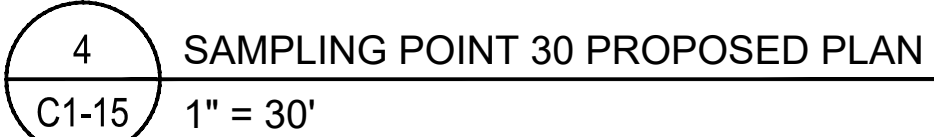
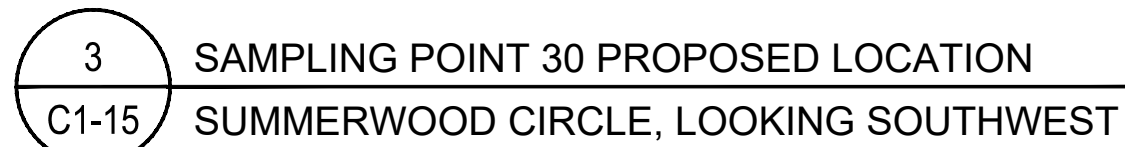
SAMPLING POINTS 25 & 26

PERMANENT WATERMAIN
SAMPLING POINT
CONSTRUCTION DRAWINGS
VILLAGE OF WELLINGTON
PALM BEACH COUNTY, FLORIDA

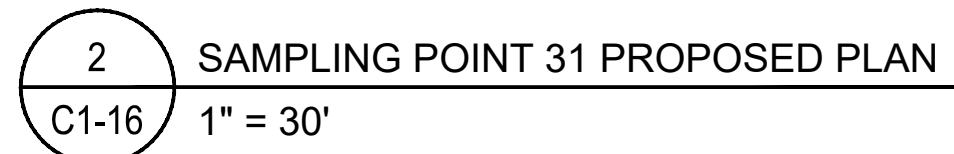
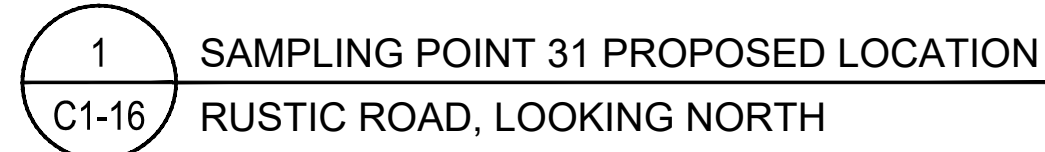
DATE:	OCTOBER 2018
P.A. NO.	B8703.00
DWG. NO.	44-40-13-03
SHEET:	C1-13



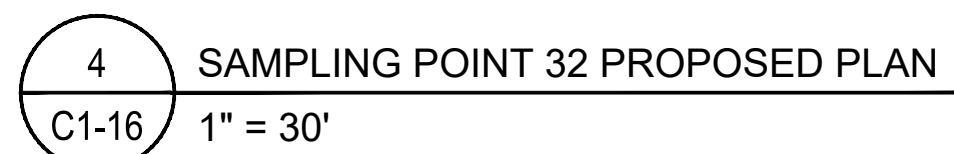
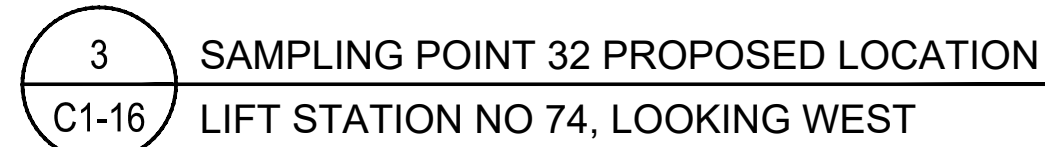
NOTE:
LOCATION SHOWN IS APPROXIMATE AND INTENDED
TO SHOW GENERAL WORK AREA. OWNER WILL
STAKE EXACT LOCATION IN THE FIELD WITH THE
CONTRACTOR PRIOR TO COMMENCEMENT.



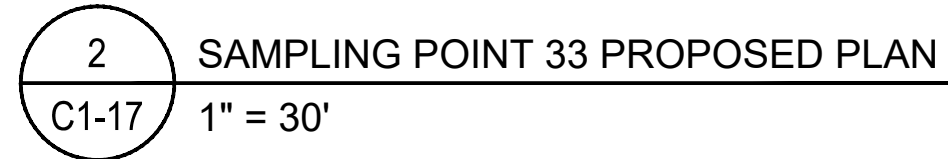
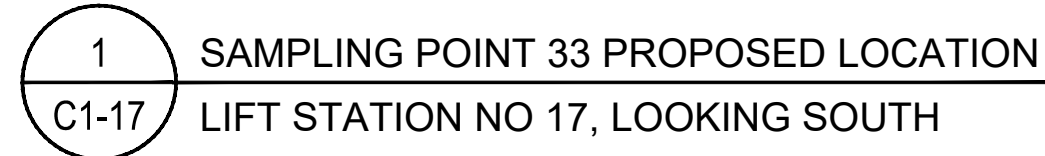
NOTE:
LOCATION SHOWN IS APPROXIMATE AND INTENDED
TO SHOW GENERAL WORK AREA. OWNER WILL
STAKE EXACT LOCATION IN THE FIELD WITH THE
CONTRACTOR PRIOR TO COMMENCEMENT.



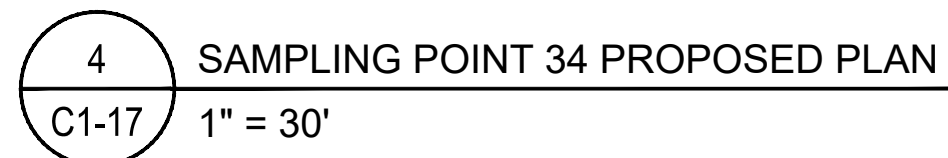
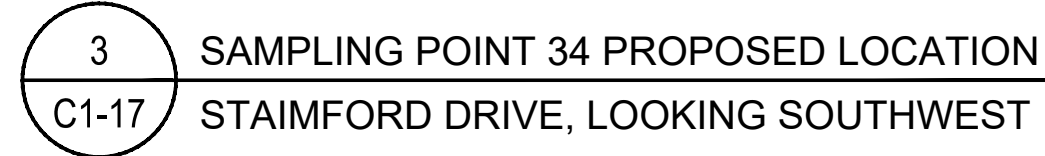
NOTE:
LOCATION SHOWN IS APPROXIMATE AND INTENDED
TO SHOW GENERAL WORK AREA. OWNER WILL
STAKE EXACT LOCATION IN THE FIELD WITH THE
CONTRACTOR PRIOR TO COMMENCEMENT.



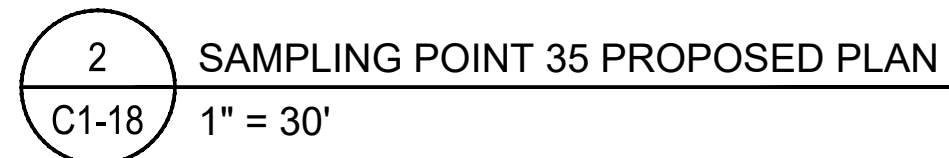
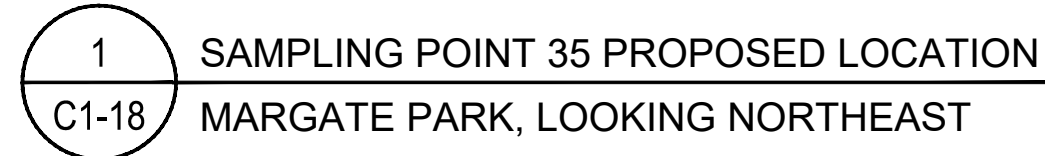
NOTE:
LOCATION SHOWN IS APPROXIMATE AND INTENDED
TO SHOW GENERAL WORK AREA. OWNER WILL
STAKE EXACT LOCATION IN THE FIELD WITH THE
CONTRACTOR PRIOR TO COMMENCEMENT.



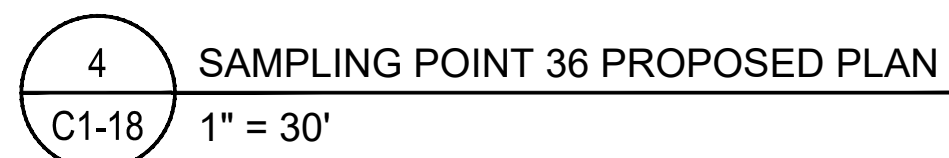
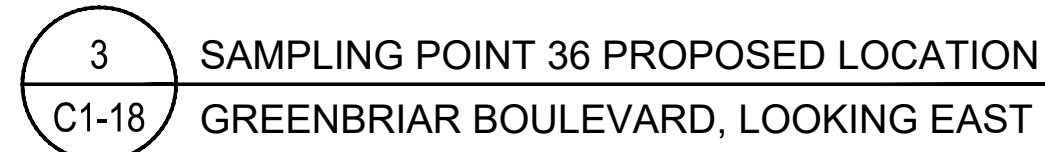
NOTE:
LOCATION SHOWN IS APPROXIMATE AND INTENDED
TO SHOW GENERAL WORK AREA. OWNER WILL
STAKE EXACT LOCATION IN THE FIELD WITH THE
CONTRACTOR PRIOR TO COMMENCEMENT.



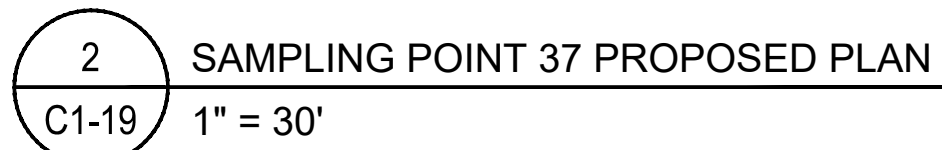
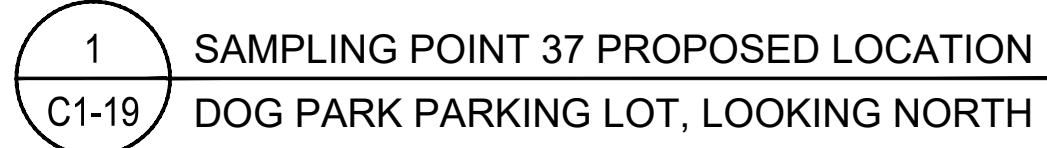
NOTE:
LOCATION SHOWN IS APPROXIMATE AND INTENDED
TO SHOW GENERAL WORK AREA. OWNER WILL
STAKE EXACT LOCATION IN THE FIELD WITH THE
CONTRACTOR PRIOR TO COMMENCEMENT.



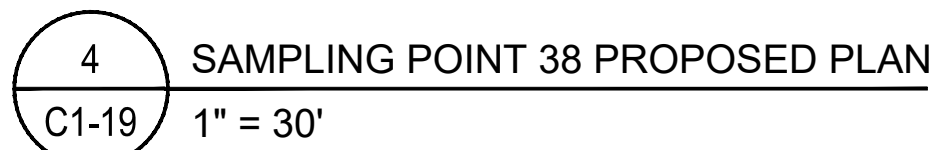
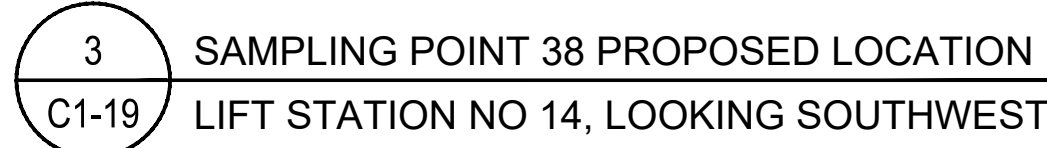
NOTE:
LOCATION SHOWN IS APPROXIMATE AND INTENDED
TO SHOW GENERAL WORK AREA. OWNER WILL
STAKE EXACT LOCATION IN THE FIELD WITH THE
CONTRACTOR PRIOR TO COMMENCEMENT.



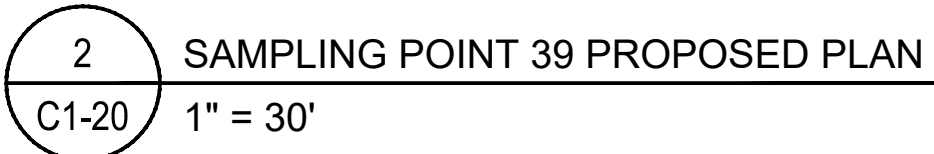
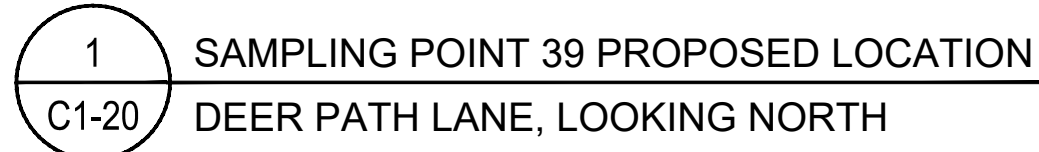
NOTE:
LOCATION SHOWN IS APPROXIMATE AND INTENDED
TO SHOW GENERAL WORK AREA. OWNER WILL
STAKE EXACT LOCATION IN THE FIELD WITH THE
CONTRACTOR PRIOR TO COMMENCEMENT.



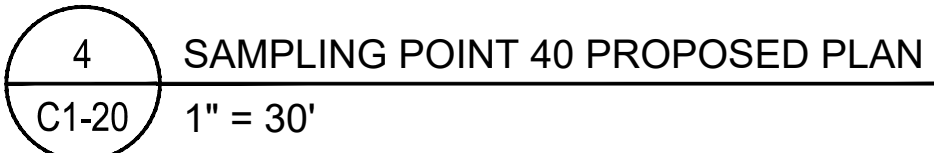
NOTE:
LOCATION SHOWN IS APPROXIMATE AND INTENDED
TO SHOW GENERAL WORK AREA. OWNER WILL
STAKE EXACT LOCATION IN THE FIELD WITH THE
CONTRACTOR PRIOR TO COMMENCEMENT.



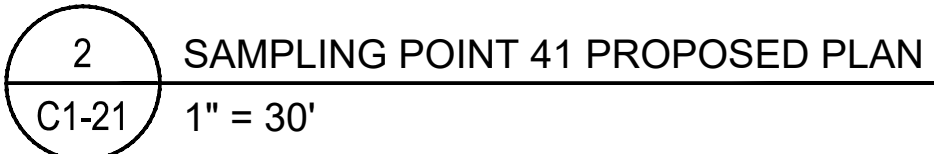
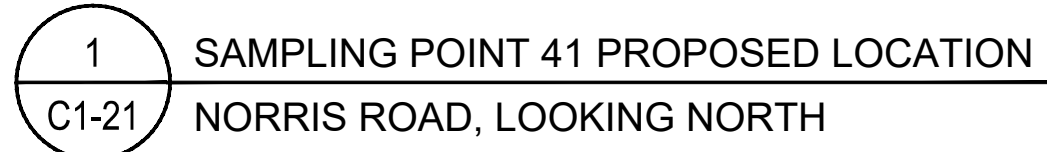
NOTE:
LOCATION SHOWN IS APPROXIMATE AND INTENDED
TO SHOW GENERAL WORK AREA. OWNER WILL
STAKE EXACT LOCATION IN THE FIELD WITH THE
CONTRACTOR PRIOR TO COMMENCEMENT.



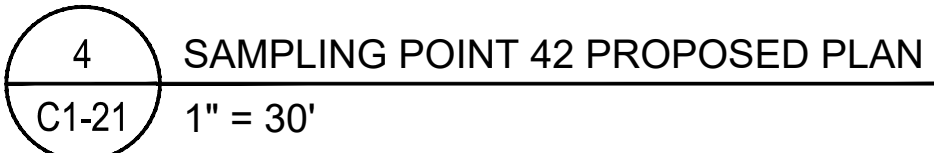
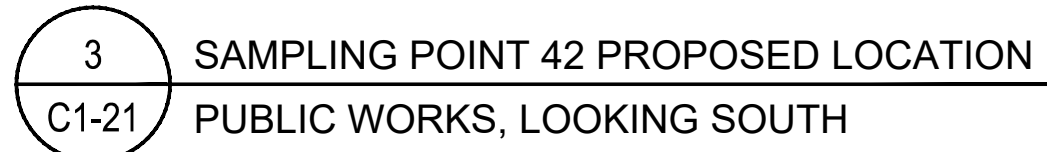
NOTE:
LOCATION SHOWN IS APPROXIMATE AND INTENDED
TO SHOW GENERAL WORK AREA. OWNER WILL
STAKE EXACT LOCATION IN THE FIELD WITH THE
CONTRACTOR PRIOR TO COMMENCEMENT.



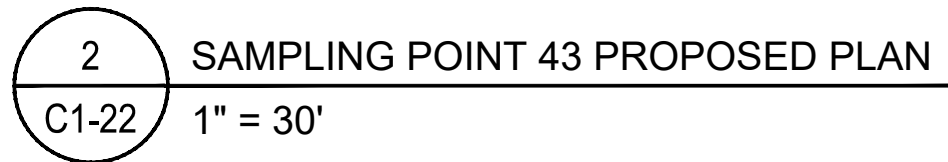
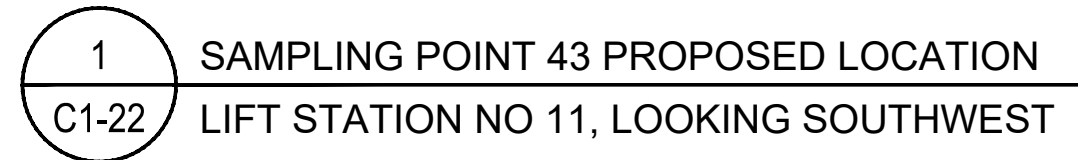
NOTE:
LOCATION SHOWN IS APPROXIMATE AND INTENDED
TO SHOW GENERAL WORK AREA. OWNER WILL
STAKE EXACT LOCATION IN THE FIELD WITH THE
CONTRACTOR PRIOR TO COMMENCEMENT.



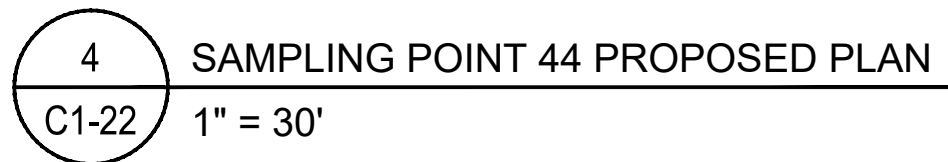
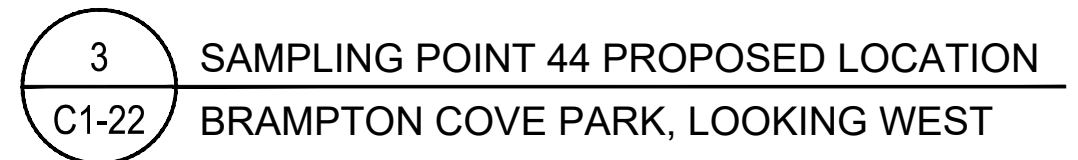
NOTE:
LOCATION SHOWN IS APPROXIMATE AND INTENDED
TO SHOW GENERAL WORK AREA. OWNER WILL
STAKE EXACT LOCATION IN THE FIELD WITH THE
CONTRACTOR PRIOR TO COMMENCEMENT.



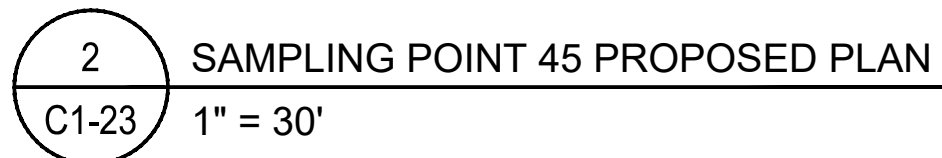
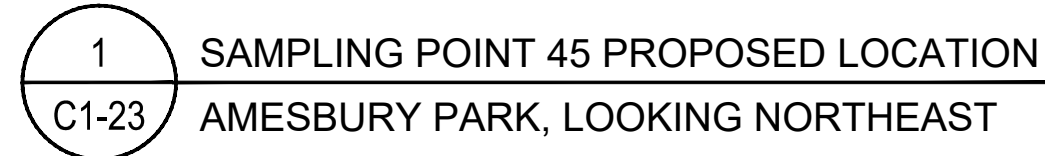
NOTE:
LOCATION SHOWN IS APPROXIMATE AND INTENDED
TO SHOW GENERAL WORK AREA. OWNER WILL
STAKE EXACT LOCATION IN THE FIELD WITH THE
CONTRACTOR PRIOR TO COMMENCEMENT.



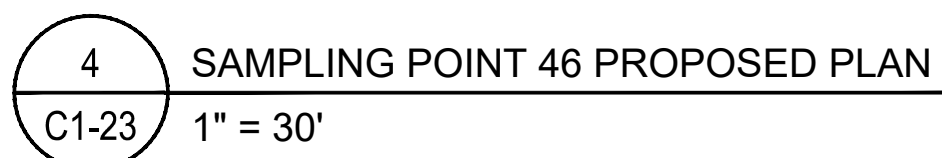
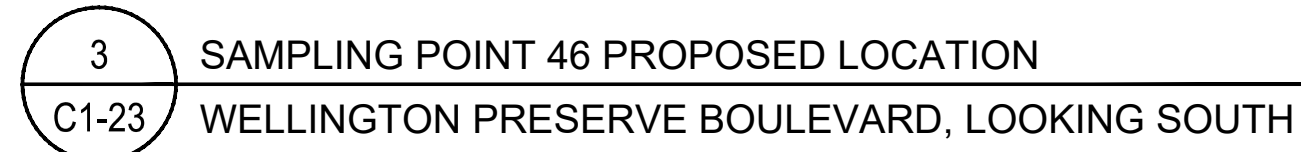
NOTE:
LOCATION SHOWN IS APPROXIMATE AND INTENDED
TO SHOW GENERAL WORK AREA. OWNER WILL
STAKE EXACT LOCATION IN THE FIELD WITH THE
CONTRACTOR PRIOR TO COMMENCEMENT.



NOTE:
LOCATION SHOWN IS APPROXIMATE AND INTENDED
TO SHOW GENERAL WORK AREA. OWNER WILL
STAKE EXACT LOCATION IN THE FIELD WITH THE
CONTRACTOR PRIOR TO COMMENCEMENT.



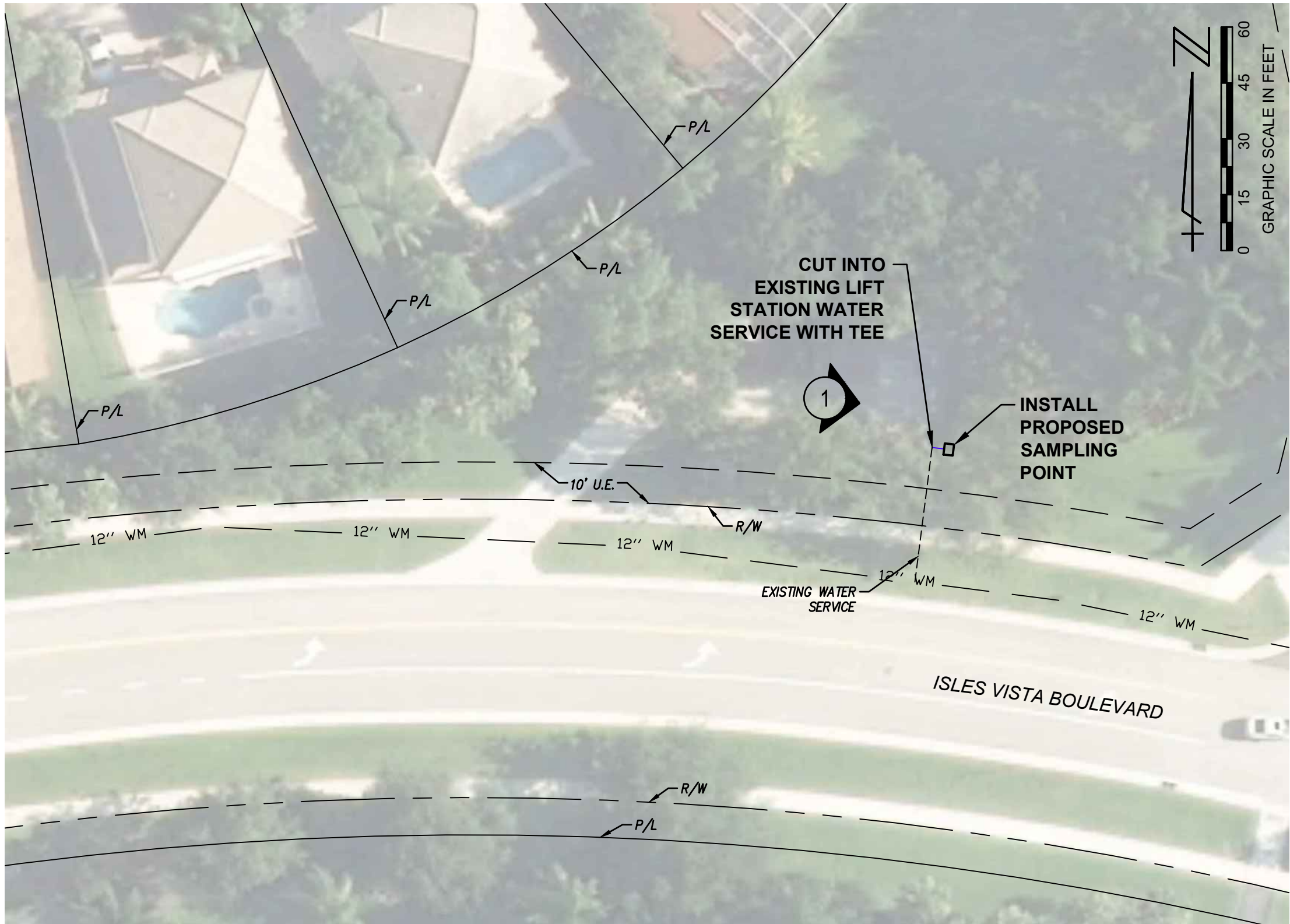
NOTE:
LOCATION SHOWN IS APPROXIMATE AND INTENDED
TO SHOW GENERAL WORK AREA. OWNER WILL
STAKE EXACT LOCATION IN THE FIELD WITH THE
CONTRACTOR PRIOR TO COMMENCEMENT.



NOTE:
LOCATION SHOWN IS APPROXIMATE AND INTENDED
TO SHOW GENERAL WORK AREA. OWNER WILL
STAKE EXACT LOCATION IN THE FIELD WITH THE
CONTRACTOR PRIOR TO COMMENCEMENT.



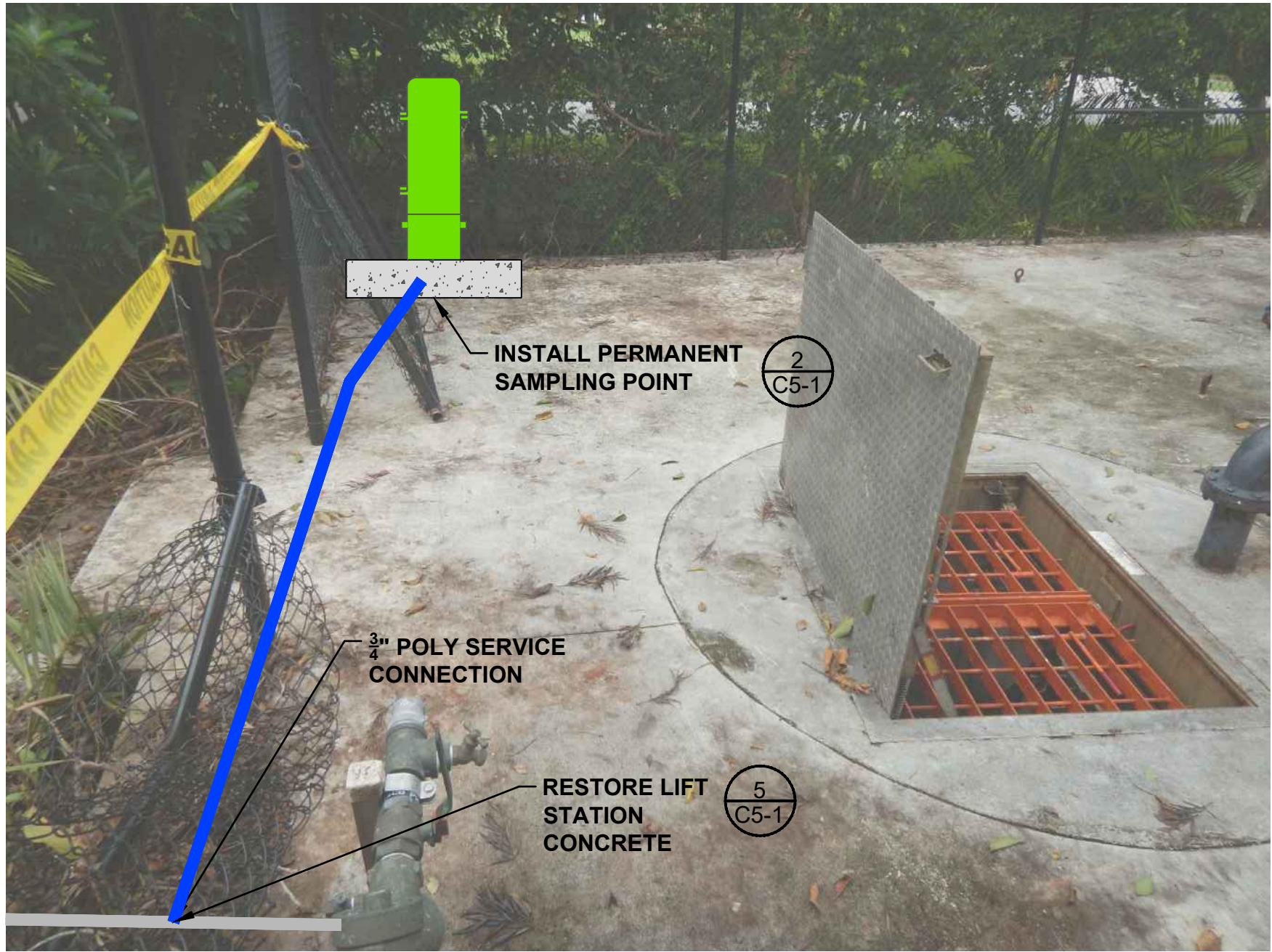
1 SAMPLING POINT 47 PROPOSED LOCATION
C1-24 LIFT STATION NO 79, LOOKING EAST



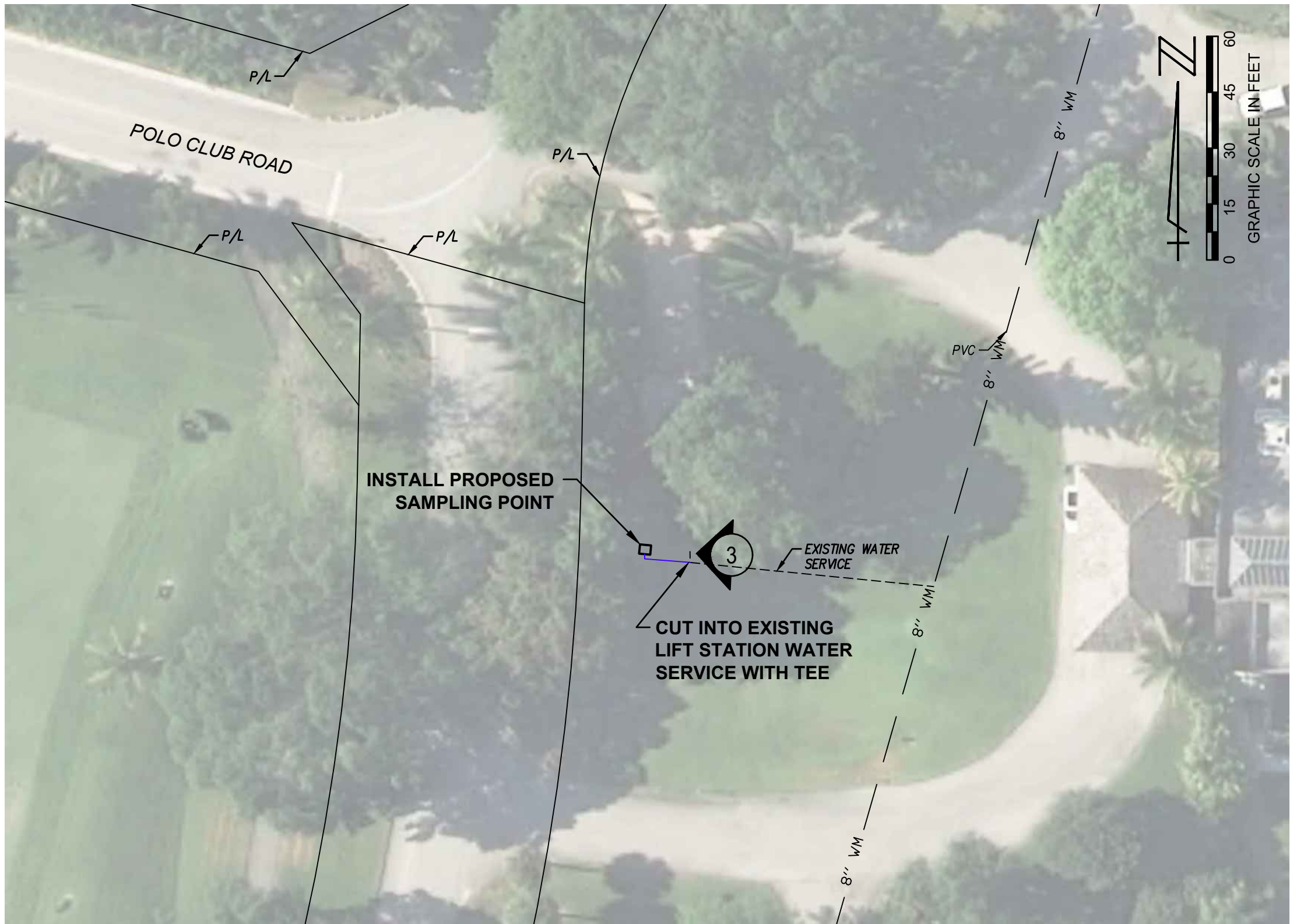
2 SAMPLING POINT 47 PROPOSED PLAN
C1-24 1" = 30'

SAMPLING POINT 47 DATA	
PROPOSED ADDRESS	4188 ISLES VISTA BOULEVARD
LOCATION QUADRANT	SE (SHEET C0-2)
LIFT STATION NO.	79
VOW PARK	N/A
FIELD SERVICES NOTES	TIE INTO EXISTING SERVICE, 2' OF POLY, INSIDE LS, NEXT TO BACKFLOW

NOTE:
LOCATION SHOWN IS APPROXIMATE AND INTENDED
TO SHOW GENERAL WORK AREA. OWNER WILL
STAKE EXACT LOCATION IN THE FIELD WITH THE
CONTRACTOR PRIOR TO COMMENCEMENT.



3 SAMPLING POINT 48 PROPOSED LOCATION
C1-24 LIFT STATION NO 3, LOOKING WEST



4 SAMPLING POINT 48 PROPOSED PLAN
C1-24 1" = 30'

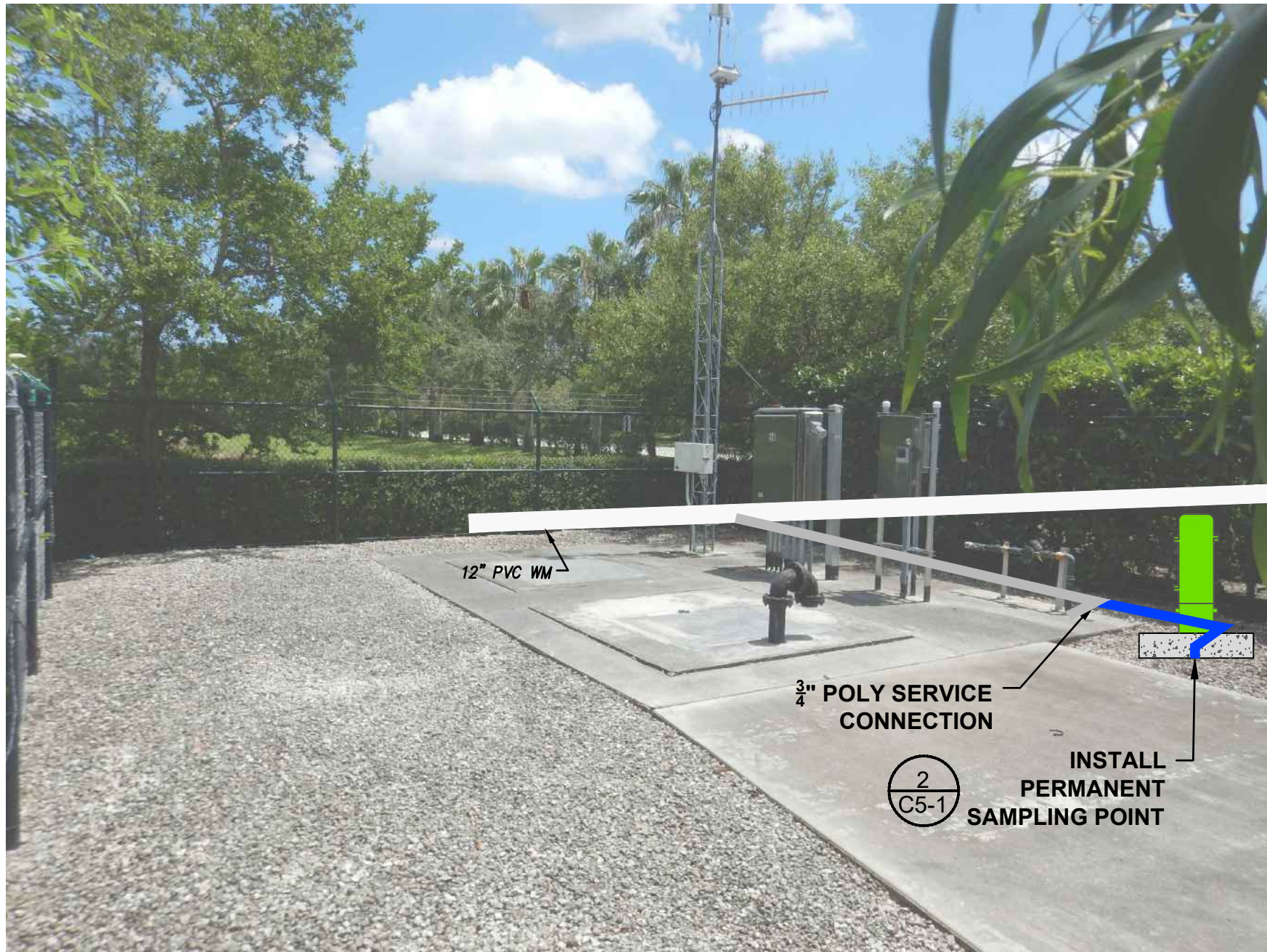
SAMPLING POINT 48 DATA	
PROPOSED ADDRESS	11196 POLO CLUB ROAD
LOCATION QUADRANT	SE (SHEET C0-2)
LIFT STATION NO.	3
VOW PARK	N/A
FIELD SERVICES NOTES	TIE INTO EXISTING SERVICE, INSIDE OF LS

NOTE:
LOCATION SHOWN IS APPROXIMATE AND INTENDED
TO SHOW GENERAL WORK AREA. OWNER WILL
STAKE EXACT LOCATION IN THE FIELD WITH THE
CONTRACTOR PRIOR TO COMMENCEMENT.

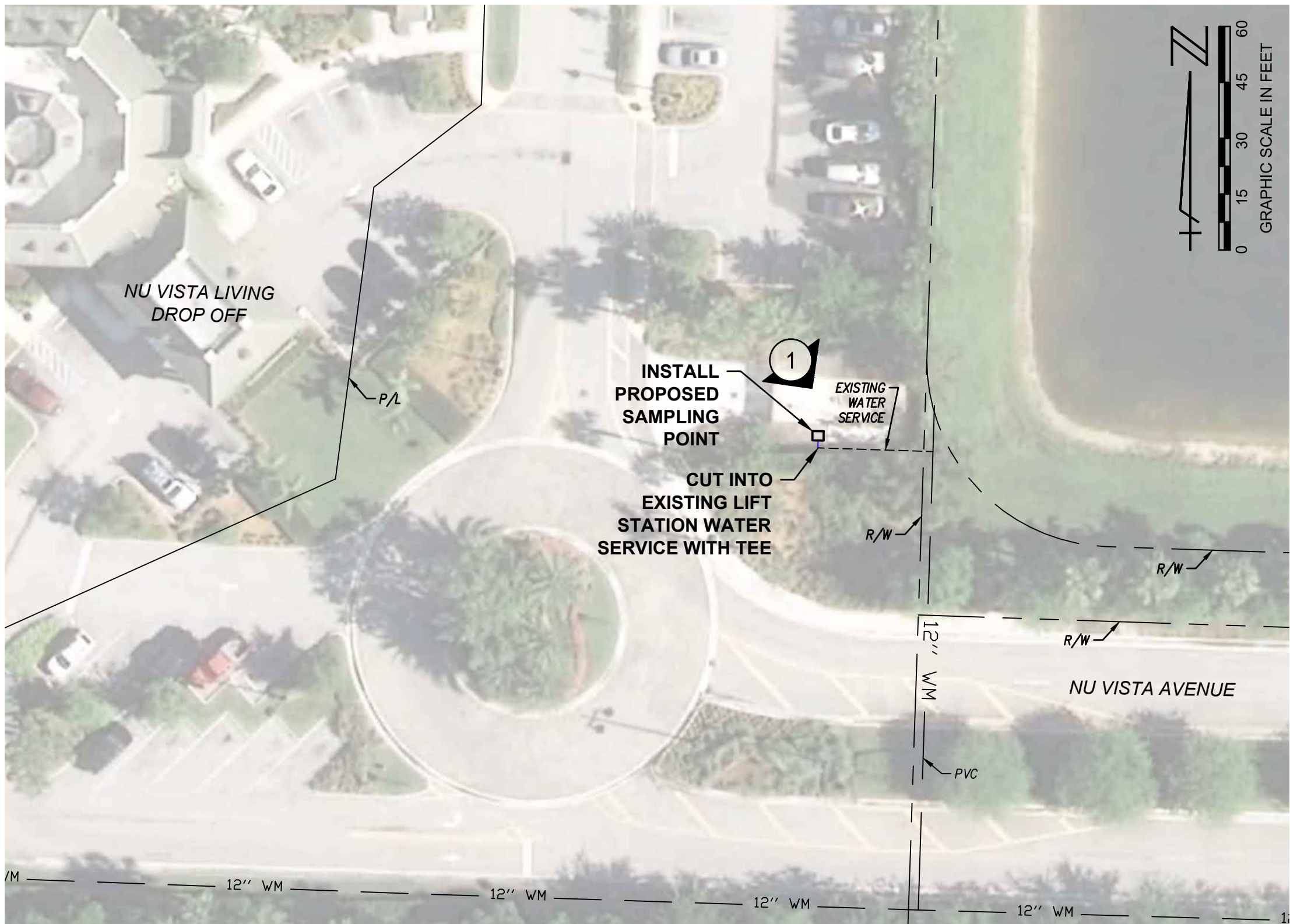
BAR IS EQUAL TO ONE INCH
ON ORIGINAL DRAWING
ADJUST ALL SCALED
DIMENSIONS ACCORDINGLY

<div>WELL NO.: 16000000 SAMPLING POINT: 16000000</div> <div>CADD FILE: K:\well\samp\DWG\16000000_1-22.dwg</div>						SEAL		FLORIDA E.B. NO. 48	<div>MOCK•ROOS</div> <div>CONSULTING ENGINEERS</div> <div>5720 Corporate Way, West Palm Beach, Florida 33407 (561) 683-3113, www.MockRoos.com</div>		FLORIDA L.B. NO. 48		FIELD: ----		<div>PERMANENT WATERMAIN</div> <div>SAMPLING POINT</div> <div>CONSTRUCTION DRAWINGS</div> <div>VILLAGE OF WELLINGTON</div> <div>PALM BEACH COUNTY, FLORIDA</div>				DATE: OCTOBER 2018	
						JOHN P. CAIRNES FLORIDA P.E. NO. 74737					DRAWN: TDT		P.A. NO. B8703.00							
											DESIGN: JPC		DWG. NO. 44-40-13-03							
											APPR: GGG		SHEET: C1-24							
				DATE						SCALE: AS SHOWN										

PLOT DATE: Oct 10, 2018 - 10:37am XREFS: \\C:\3D\SAMPCS01\MD.dwg \\C:\3D\SAMPCS01\MG.dwg \\C:\3D\SAMPCS01\MP.dwg \\C:\3D\SAMPCS01\SP.dwg \\C:\3D\SAMPCS01\TP.dwg \\C:\3D\SAMPCS01\VP.dwg \\C:\3D\SAMPCS01\WP.dwg \\C:\3D\SAMPCS01\XREF.dwg \\C:\3D\SAMPCS01\YREF.dwg \\C:\3D\SAMPCS01\ZREF.dwg \\C:\3D\SAMPCS01\AA.dwg \\C:\3D\SAMPCS01\BB.dwg \\C:\3D\SAMPCS01\CC.dwg \\C:\3D\SAMPCS01\DD.dwg \\C:\3D\SAMPCS01\EE.dwg \\C:\3D\SAMPCS01\FF.dwg \\C:\3D\SAMPCS01\GG.dwg \\C:\3D\SAMPCS01\HH.dwg \\C:\3D\SAMPCS01\II.dwg \\C:\3D\SAMPCS01\JJ.dwg \\C:\3D\SAMPCS01\KK.dwg \\C:\3D\SAMPCS01\LL.dwg \\C:\3D\SAMPCS01\MM.dwg \\C:\3D\SAMPCS01\NN.dwg \\C:\3D\SAMPCS01\OO.dwg \\C:\3D\SAMPCS01\PP.dwg \\C:\3D\SAMPCS01\QQ.dwg \\C:\3D\SAMPCS01\RR.dwg \\C:\3D\SAMPCS01\SS.dwg \\C:\3D\SAMPCS01\TT.dwg \\C:\3D\SAMPCS01\UU.dwg \\C:\3D\SAMPCS01\VV.dwg \\C:\3D\SAMPCS01\WW.dwg \\C:\3D\SAMPCS01\XX.dwg \\C:\3D\SAMPCS01\YY.dwg \\C:\3D\SAMPCS01\ZZ.dwg



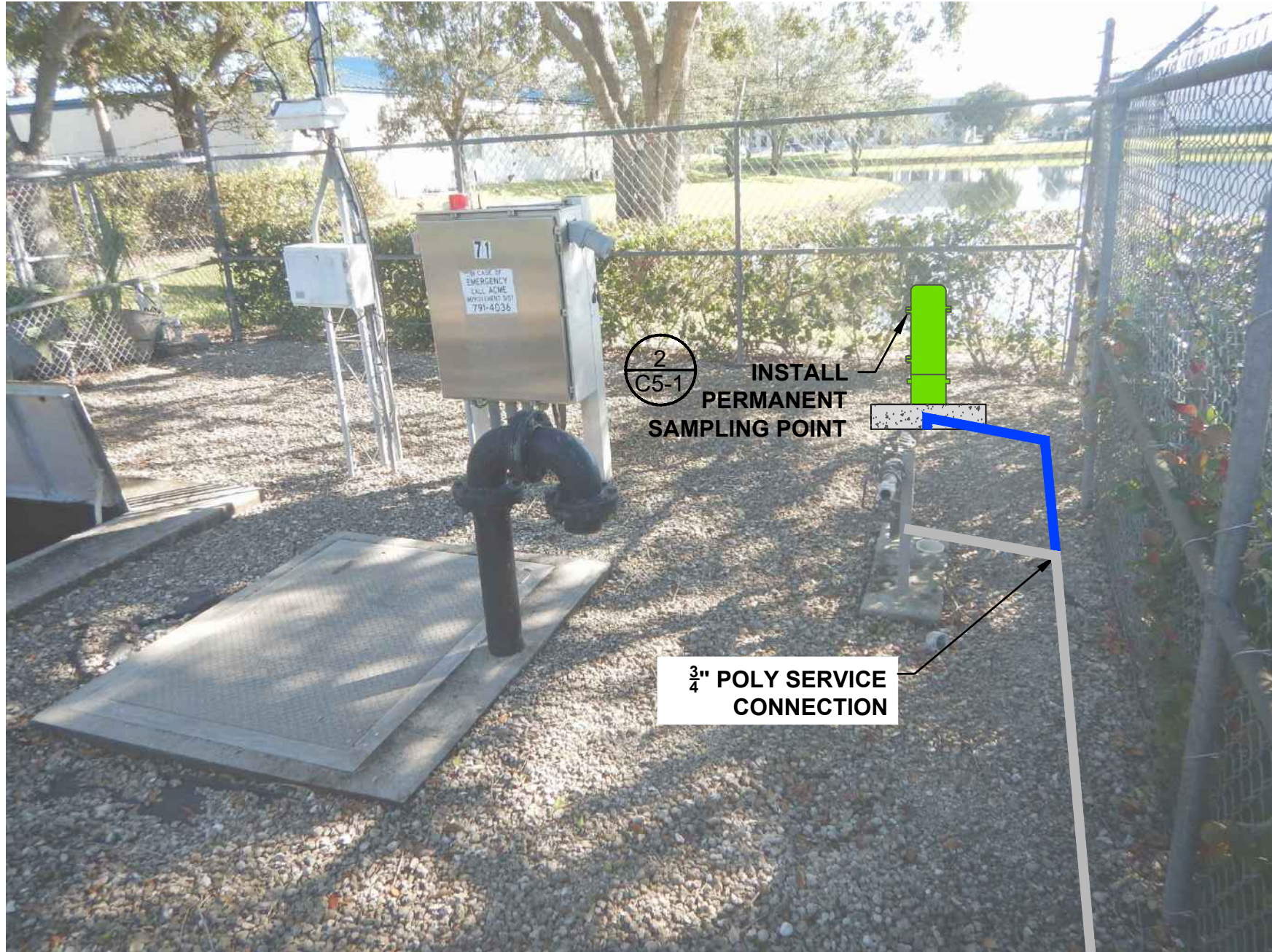
1 SAMPLING POINT 49 PROPOSED LOCATION
C1-25 LIFT STATION NO 86, LOOKING SOUTHEAST



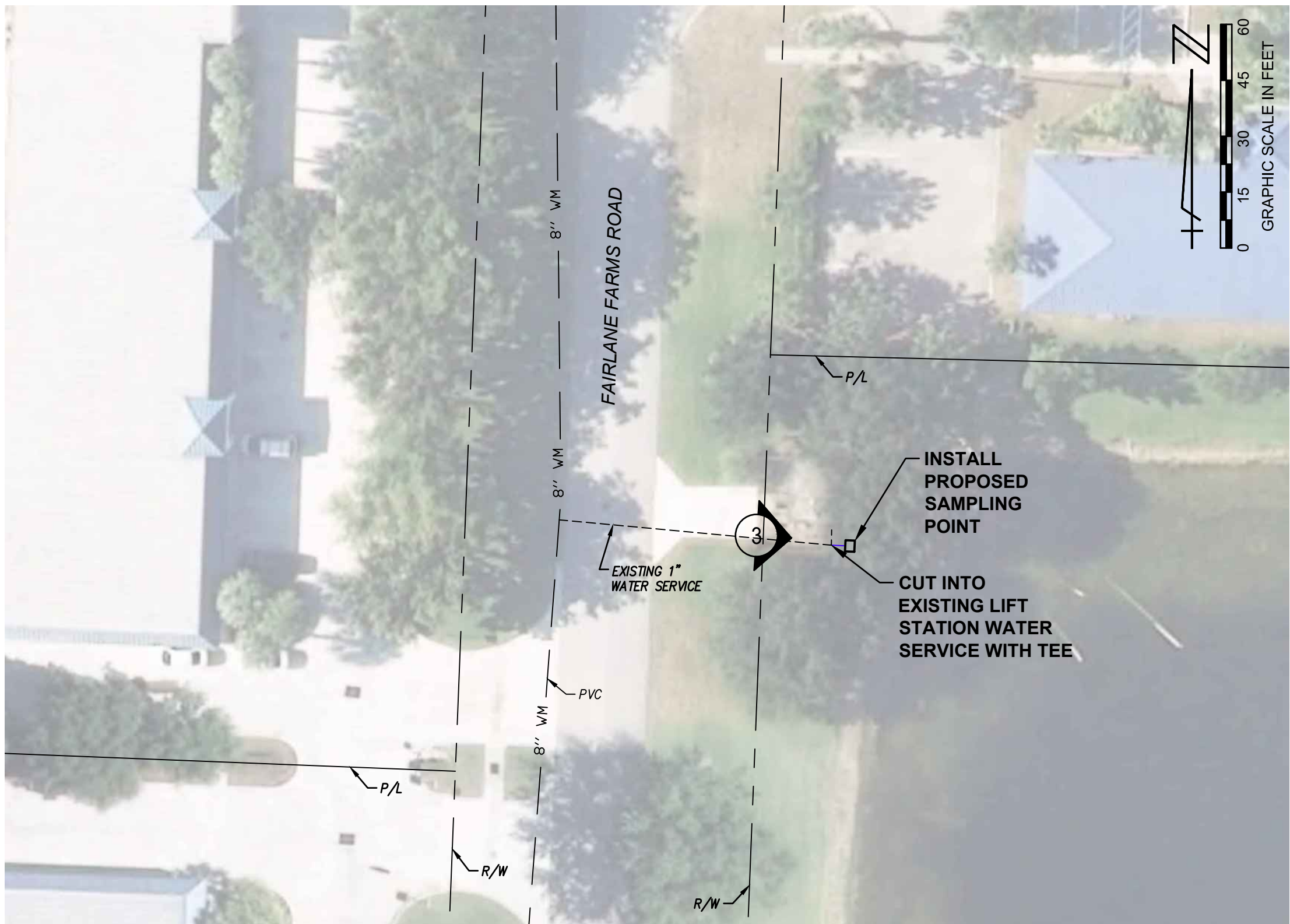
2 SAMPLING POINT 49 PROPOSED PLAN
C1-25 1" = 30'

SAMPLING POINT 49 DATA	
PROPOSED ADDRESS	10327 NUVISTA AVENUE
LOCATION QUADRANT	SE (SHEET C0-2)
LIFT STATION NO.	86
VOW PARK	N/A
FIELD SERVICES NOTES	TIE INTO EXISTING SERVICE

NOTE:
LOCATION SHOWN IS APPROXIMATE AND INTENDED
TO SHOW GENERAL WORK AREA. OWNER WILL
STAKE EXACT LOCATION IN THE FIELD WITH THE
CONTRACTOR PRIOR TO COMMENCEMENT.



3 SAMPLING POINT 50 PROPOSED LOCATION
C1-25 LIFT STATION NO 71, LOOKING EAST



4 SAMPLING POINT 50 PROPOSED PLAN
C1-25 1" = 30'

SAMPLING POINT 50 DATA	
PROPOSED ADDRESS	3455 FAIRLANE FARMS ROAD
LOCATION QUADRANT	SE (SHEET C0-2)
LIFT STATION NO.	71
VOW PARK	N/A
FIELD SERVICES NOTES	TIE INTO EXISTING SERVICE

NOTE:
LOCATION SHOWN IS APPROXIMATE AND INTENDED
TO SHOW GENERAL WORK AREA. OWNER WILL
STAKE EXACT LOCATION IN THE FIELD WITH THE
CONTRACTOR PRIOR TO COMMENCEMENT.

BAR IS EQUAL TO ONE INCH
ON ORIGINAL DRAWING
ADJUST ALL SCALED
DIMENSIONS ACCORDINGLY

CADD FILE:
K:\well\wellsamp\DWG\1
SAMPCS01 C1-25.dwg

NO.	DATE	BY	REVISION

SEAL
JOHN P. CAIRNES FLORIDA P.E. NO. 74737
DATE

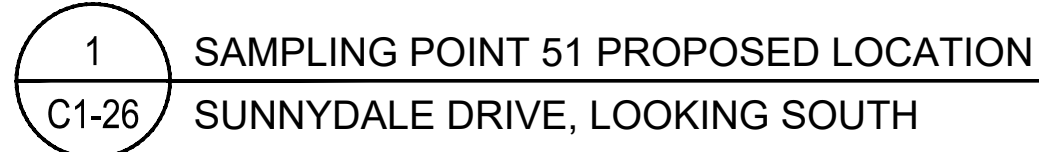
FLORIDA E.B. NO. 48	FLORIDA L.B. NO. 48
MOCK • ROOS CONSULTING ENGINEERS	
5720 Corporate Way, West Palm Beach, Florida 33407 (561) 683-3113, www.MockRoos.com	

FIELD: ----
DRAWN: TDT
DESIGN: JPC
APPR: GGG
SCALE: AS SHOWN

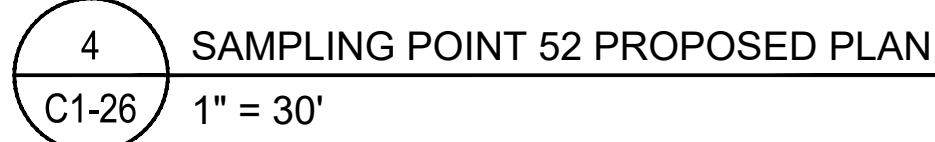
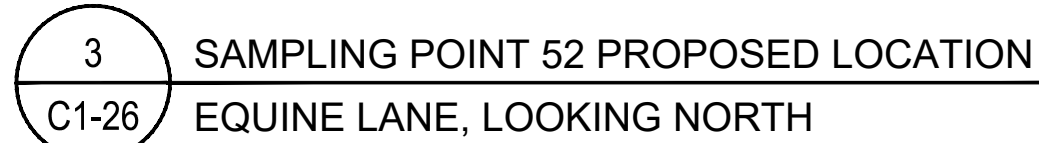
SAMPLING POINTS 49 & 50

PERMANENT WATERMAIN
SAMPLING POINT
CONSTRUCTION DRAWINGS
VILLAGE OF WELLINGTON
PALM BEACH COUNTY, FLORIDA

DATE:	OCTOBER 2018
P.A. NO.	B8703.00
DWG. NO.	44-40-13-03
SHEET:	C1-25



NOTE:
LOCATION SHOWN IS APPROXIMATE AND INTENDED
TO SHOW GENERAL WORK AREA. OWNER WILL
STAKE EXACT LOCATION IN THE FIELD WITH THE
CONTRACTOR PRIOR TO COMMENCEMENT.



NOTE:
LOCATION SHOWN IS APPROXIMATE AND INTENDED
TO SHOW GENERAL WORK AREA. OWNER WILL
STAKE EXACT LOCATION IN THE FIELD WITH THE
CONTRACTOR PRIOR TO COMMENCEMENT.

CADD FILE:
K:\welf\wellsamp\DWG\
SAMPCS01_C1-25.dwg

NO.	DATE	BY	REVISION

SEAL
JOHN P. CAIRNES FLORIDA P.E. NO. 74737
DATE

FLORIDA E.B. NO. 48

MOCK • ROOS
CONSULTING ENGINEERS

5720 Corporate Way, West Palm Beach, Florida 33407 (561) 683-3113, www.MockRoos.com

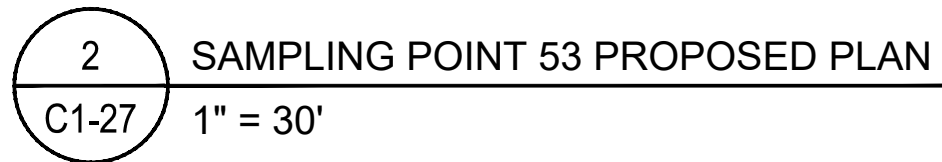
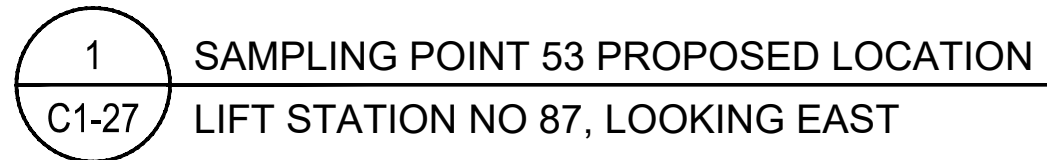
FLORIDA L.B. NO. 48

FIELD: ----
DRAWN: TDT
DESIGN: JPC
APPR: GGG
SCALE: AS SHOWN

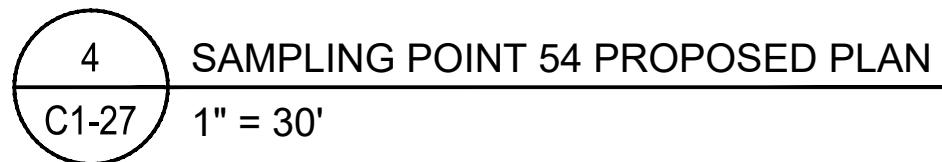
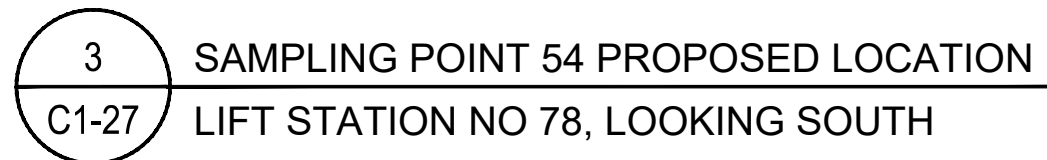
SAMPLING POINTS 51 & 52

PERMANENT WATERMAIN
SAMPLING POINT
CONSTRUCTION DRAWINGS
VILLAGE OF WELLINGTON
PALM BEACH COUNTY, FLORIDA

DATE:	OCTOBER 2018
P.A. NO.	B8703.00
DWG. NO.	44-40-13-03
SHEET:	C1-26

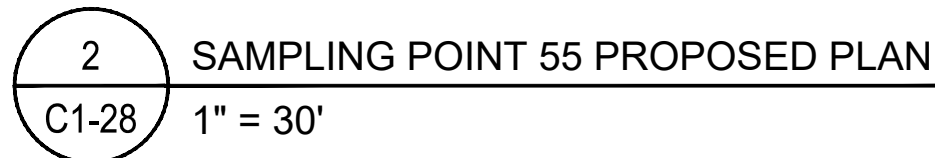
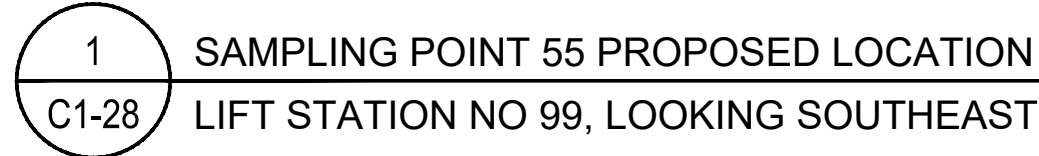


NOTE:
LOCATION SHOWN IS APPROXIMATE AND INTENDED
TO SHOW GENERAL WORK AREA. OWNER WILL
STAKE EXACT LOCATION IN THE FIELD WITH THE
CONTRACTOR PRIOR TO COMMENCEMENT.

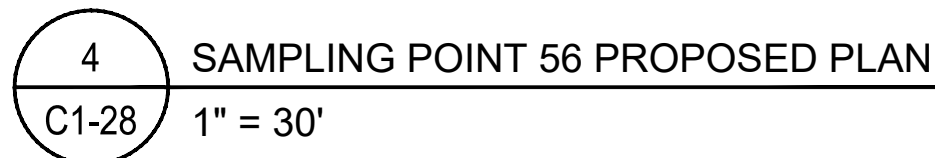
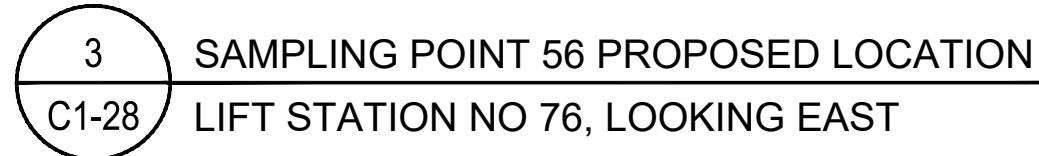


NOTE:
LOCATION SHOWN IS APPROXIMATE AND INTENDED
TO SHOW GENERAL WORK AREA. OWNER WILL
STAKE EXACT LOCATION IN THE FIELD WITH THE
CONTRACTOR PRIOR TO COMMENCEMENT.

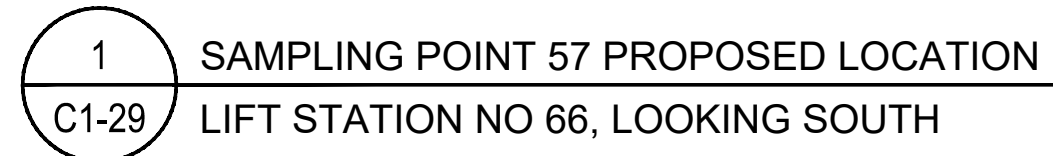
<div>NO. DATE BY REVISION</div> <div>CADD FILE: R:\well\wellcamp\DWG\ SAMPC801_C1-25.dwg</div>	<table><tr><td>NO.</td><td>DATE</td><td>BY</td><td>REVISION</td></tr><tr><td> </td><td> </td><td> </td><td> </td></tr></table>			NO.	DATE	BY	REVISION					SEAL	FLORIDA E.B. NO. 48	<div>MOCK•ROOS</div> <div>CONSULTING ENGINEERS</div> <div>5720 Corporate Way, West Palm Beach, Florida 33407 (561) 683-3113, www.MockRoos.com</div>	FLORIDA L.B. NO. 48	FIELD: ----	PERMANENT WATERMAIN SAMPLING POINT CONSTRUCTION DRAWINGS VILLAGE OF WELLINGTON PALM BEACH COUNTY, FLORIDA	DATE: OCTOBER 2018
				NO.	DATE	BY	REVISION											
				JOHN P. CAIRNES FLORIDA P.E. NO. 74737	DRAWN: TDT	P.A. NO. B8703.00												
DATE	DESIGN: JPC	DWG. NO. 44-40-13-03																
	APPR: GGG	SHEET: C1-27																
								SCALE: AS SHOWN										



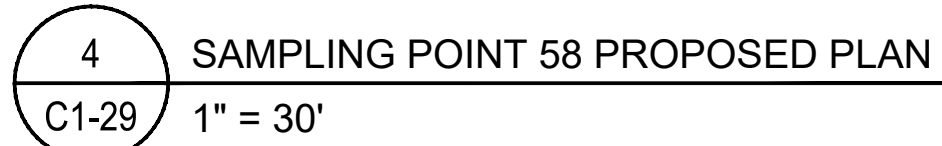
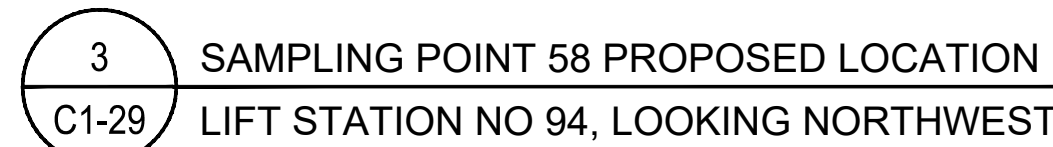
NOTE:
LOCATION SHOWN IS APPROXIMATE AND INTENDED
TO SHOW GENERAL WORK AREA. OWNER WILL
STAKE EXACT LOCATION IN THE FIELD WITH THE
CONTRACTOR PRIOR TO COMMENCEMENT.



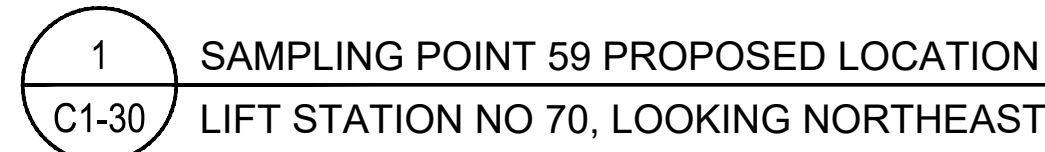
NOTE:
LOCATION SHOWN IS APPROXIMATE AND INTENDED
TO SHOW GENERAL WORK AREA. OWNER WILL
STAKE EXACT LOCATION IN THE FIELD WITH THE
CONTRACTOR PRIOR TO COMMENCEMENT.



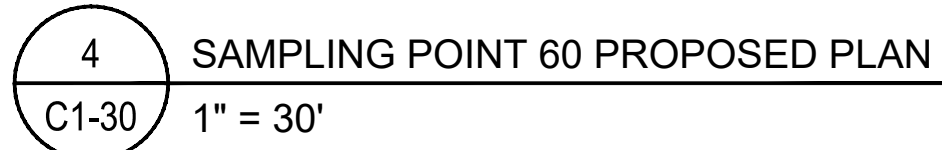
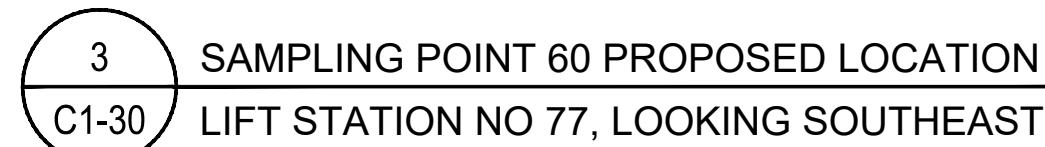
NOTE:
LOCATION SHOWN IS APPROXIMATE AND INTENDED
TO SHOW GENERAL WORK AREA. OWNER WILL
STAKE EXACT LOCATION IN THE FIELD WITH THE
CONTRACTOR PRIOR TO COMMENCEMENT.



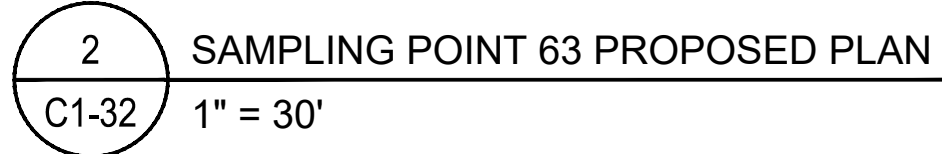
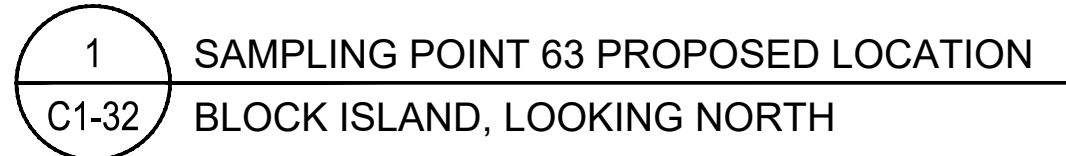
NOTE:
LOCATION SHOWN IS APPROXIMATE AND INTENDED
TO SHOW GENERAL WORK AREA. OWNER WILL
STAKE EXACT LOCATION IN THE FIELD WITH THE
CONTRACTOR PRIOR TO COMMENCEMENT.



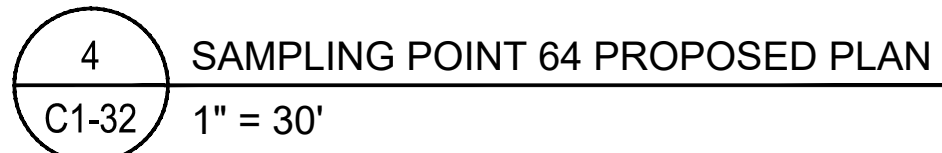
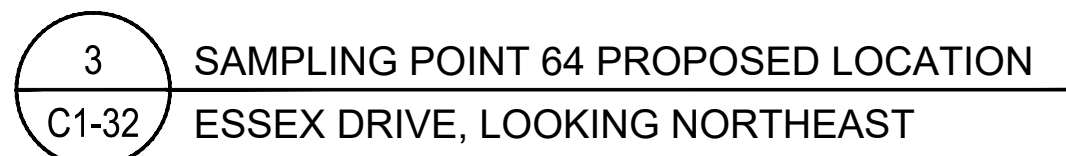
NOTE:
LOCATION SHOWN IS APPROXIMATE AND INTENDED
TO SHOW GENERAL WORK AREA. OWNER WILL
STAKE EXACT LOCATION IN THE FIELD WITH THE
CONTRACTOR PRIOR TO COMMENCEMENT.



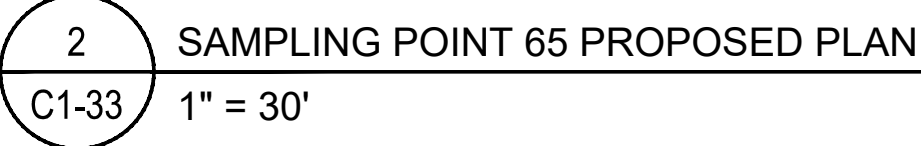
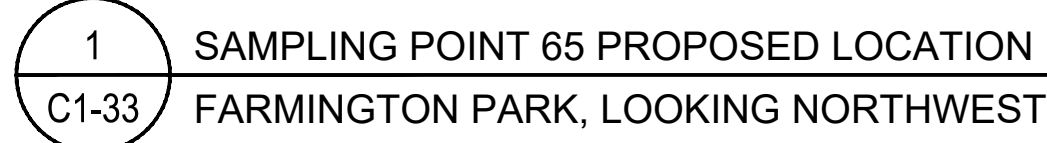
NOTE:
LOCATION SHOWN IS APPROXIMATE AND INTENDED
TO SHOW GENERAL WORK AREA. OWNER WILL
STAKE EXACT LOCATION IN THE FIELD WITH THE
CONTRACTOR PRIOR TO COMMENCEMENT.



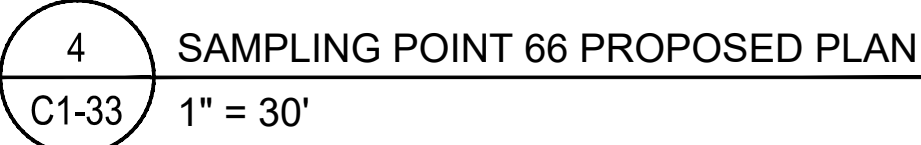
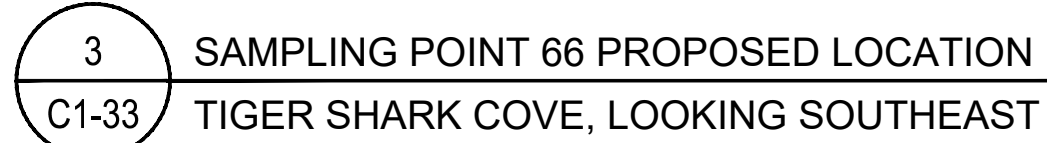
NOTE:
LOCATION SHOWN IS APPROXIMATE AND INTENDED
TO SHOW GENERAL WORK AREA. OWNER WILL
STAKE EXACT LOCATION IN THE FIELD WITH THE
CONTRACTOR PRIOR TO COMMENCEMENT.



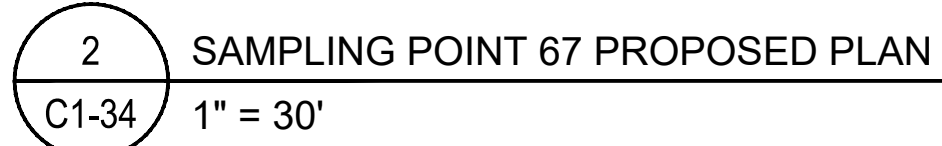
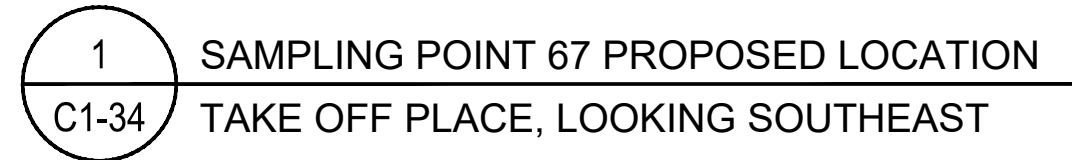
NOTE:
LOCATION SHOWN IS APPROXIMATE AND INTENDED
TO SHOW GENERAL WORK AREA. OWNER WILL
STAKE EXACT LOCATION IN THE FIELD WITH THE
CONTRACTOR PRIOR TO COMMENCEMENT.



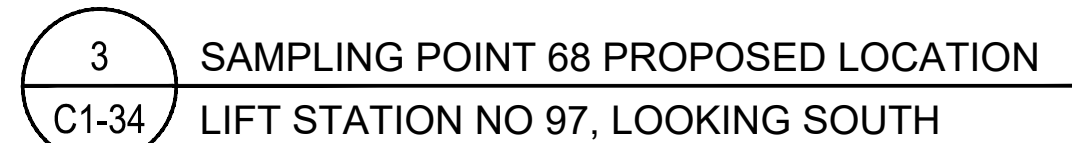
NOTE:
LOCATION SHOWN IS APPROXIMATE AND INTENDED
TO SHOW GENERAL WORK AREA. OWNER WILL
STAKE EXACT LOCATION IN THE FIELD WITH THE
CONTRACTOR PRIOR TO COMMENCEMENT.



NOTE:
LOCATION SHOWN IS APPROXIMATE AND INTENDED
TO SHOW GENERAL WORK AREA. OWNER WILL
STAKE EXACT LOCATION IN THE FIELD WITH THE
CONTRACTOR PRIOR TO COMMENCEMENT.



NOTE:
LOCATION SHOWN IS APPROXIMATE AND INTENDED
TO SHOW GENERAL WORK AREA. OWNER WILL
STAKE EXACT LOCATION IN THE FIELD WITH THE
CONTRACTOR PRIOR TO COMMENCEMENT.



NOTE:
LOCATION SHOWN IS APPROXIMATE AND INTENDED
TO SHOW GENERAL WORK AREA. OWNER WILL
STAKE EXACT LOCATION IN THE FIELD WITH THE
CONTRACTOR PRIOR TO COMMENCEMENT.

NO.	DATE	BY	REVISION

SEAL
JOHN P. CAIRNES FLORIDA P.E. NO. 74737
DATE

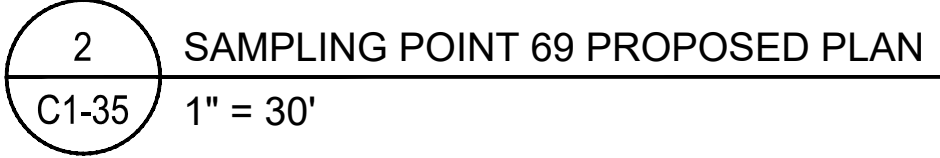
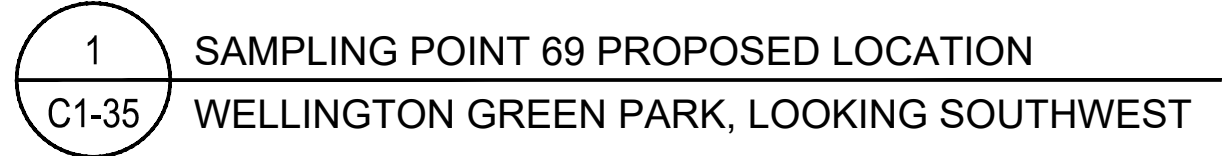
MOCK • ROOS
CONSULTING ENGINEERS

5720 Corporate Way, West Palm Beach, Florida 33407 (561) 683-3113, www.MockRoos.com

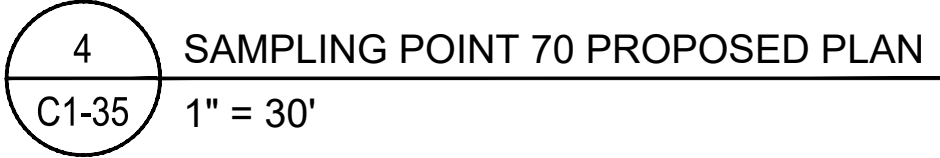
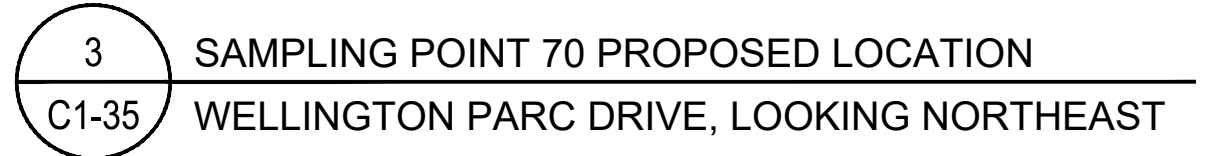
FIELD: ----
DRAWN: TDT
DESIGN: JPC
APPR: GGG
SCALE: AS SHOWN

PERMANENT WATERMAIN
SAMPLING POINT
CONSTRUCTION DRAWINGS
VILLAGE OF WELLINGTON
PALM BEACH COUNTY, FLORIDA

DATE:	OCTOBER 2018
P.A. NO.	B8703.00
DWG. NO.	44-40-13-03
SHEET:	C1-34

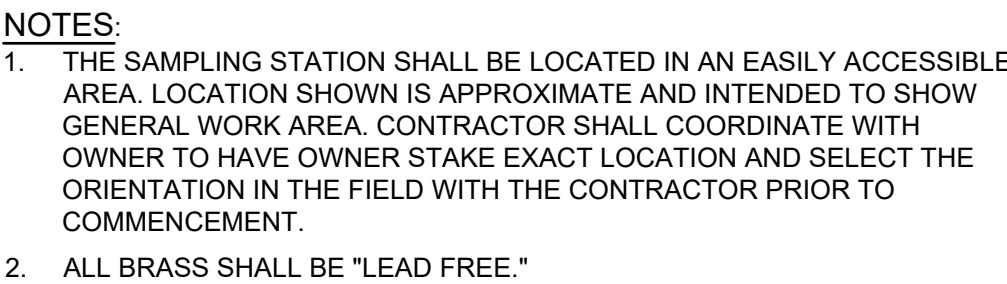


NOTE:
LOCATION SHOWN IS APPROXIMATE AND INTENDED
TO SHOW GENERAL WORK AREA. OWNER WILL
STAKE EXACT LOCATION IN THE FIELD WITH THE
CONTRACTOR PRIOR TO COMMENCEMENT.



NOTE:
LOCATION SHOWN IS APPROXIMATE AND INTENDED
TO SHOW GENERAL WORK AREA. OWNER WILL
STAKE EXACT LOCATION IN THE FIELD WITH THE
CONTRACTOR PRIOR TO COMMENCEMENT.

<div>NOTES: SAMP CSD1 - See DWG</div>					SEAL	FLORIDA E.B. NO. 48 <div>MOCK•ROOS</div> CONSULTING ENGINEERS 5720 Corporate Way, West Palm Beach, Florida 33407 (561) 683-3113, www.MockRoos.com	FLORIDA L.B. NO. 48	FIELD: ----	PERMANENT WATERMAIN SAMPLING POINT CONSTRUCTION DRAWINGS VILLAGE OF WELLINGTON PALM BEACH COUNTY, FLORIDA	DATE: OCTOBER 2018
					JOHN P. CAIRNES FLORIDA P.E. NO. 74737			DRAWN: TDT		P.A. NO. B8703.00
								DESIGN: JPC		DWG. NO. 44-40-13-03
								APPR: GGG		SHEET: C1-35
								SCALE: AS SHOWN		
CADD FILE: K:\well\wellsamp\DWG\ SAMP CSD1_ C1-34.dwg	NO.	DATE	BY	REVISION	DATE					



TYPE 'A' JOINT (TYP)

TYPE 'B' JOINT (TYP)

P.T.

5'-0" (TYP)

*SLOPE: 1.5%

P.C.

NEW SIDEWALK

EXIST. SIDEWALK

1. MAXIMUM SPACING OF TYPE 'B' JOINT SHALL BE 100'.



NOTE:
RECONSTRUCTED SIDEWALK SHALL BE FULLY ADA COMPLIANT
AND IN ACCORDANCE WITH FDOT INDEX 310

SS OPERATING BLOW OFF VALVE
HANDLE, SS BLOW OFF W/
PROTECTIVE CAP, SS SAMPLING
PETCOCK W/ PROTECTIVE CAP, 3/4"
SS WATERWAY, LOCKING HATCH,
ALUMINUM HOUSING, AND MIN 3/4"
SS PIPING (FURNISHED BY
OWNER)

6
C5-1

NOTES:
1. THE SAMPLING STATION SHALL BE LOCATED IN THE AREA SHOWN IS APPROXIMATE A GENERAL WORK AREA. CONTRACTOR SHALL HAVE OWNER STAKE EXACT LOCATION ORIENTATION IN THE FIELD WITH THE CONTRACTOR COMMENCEMENT.
2. ALL BRASS SHALL BE "LEAD FREE."

3
C5-1

5
C5-1

3" BRASS BENCHMARK W/
SAMPLING POINT NO. CALLED OUT

36"x30"x6" REINFORCED CONCRETE SLAB

EXISTING GRADE (FLUSH MOUNT TO CONCRETE)

GRASS

4" PVC BOX W/
RECESSED
BRASS PLUG

3/4" POLY SCH 40, CASING IS
REQUIRED FOR SERVICE PIPING
UNDER PAVED AREAS

X" X X" X 3/4" BRASS TEE W/
COMPRESSION FITTING

EXISTING WATER
SERVICE

3/4" BRASS CURB STOP VALVE W/
WING NUT AND COMPRESSION
FITTINGS W/ BOX

3/4" POLY
MIN 18"

3/4" SS QUICK
CONNECTION
COUPLING

1"Ø PVC
SLEEVE

5" SS HILTI REDHEAD

MIN 8"
(TYP)

13"

PROVIDE 3/4" NEOPRENE
PAD UNDER BASE OF
SAMPLE STATION W/
CONCRETE

BRASS 90° ELBOW W/
COMPRESSION FITTING


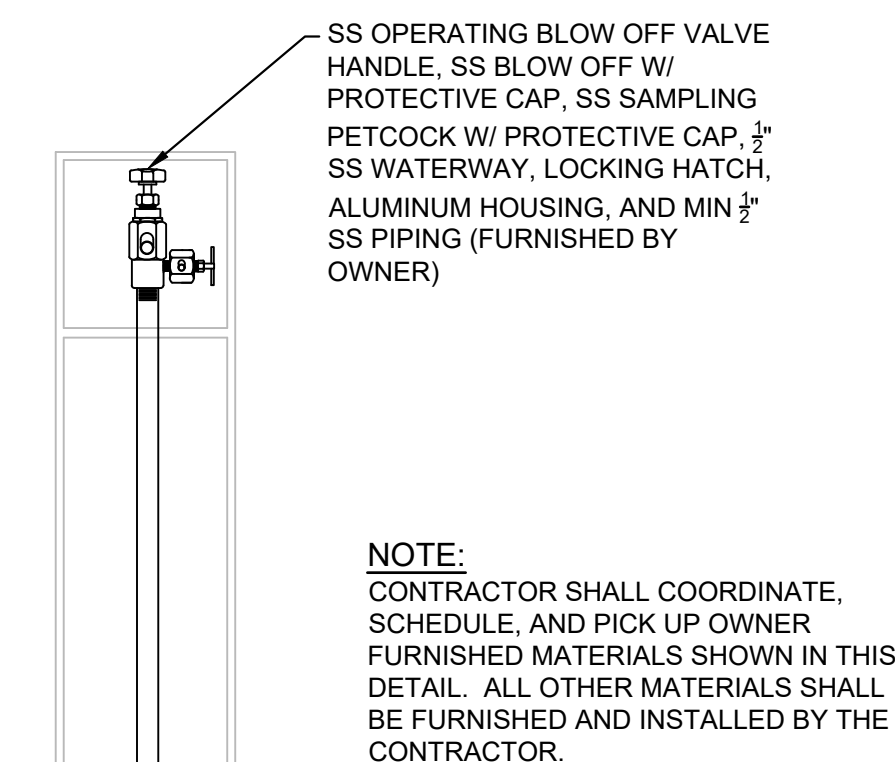
36"

6"

2"

* X" X X" = SIZE OF EXISTING SERVICE, FIELD

* $X'' \times X''$ = SIZE OF EXISTING SERVICE, FIELD VERIFY.



A diagram showing a large circle representing a sampling point. Inside the circle, the text "SAMPLING POINT" is written in a bold, sans-serif font. Below this, the number "#01" is written in a very large, bold, sans-serif font. To the right of the circle, a horizontal line extends from the circle's edge to the text "Ø3\"", indicating the diameter of the circle.

SAMPLING POINT

#01

Ø3"


NOTE:
NUMBER VARIES TO MATCH SAMPLE
POINT # AT EACH LOCATION.

DETAILS

PERMANENT WATERMAIN
SAMPLING POINT
CONSTRUCTION DRAWINGS
VILLAGE OF WELLINGTON
PALM BEACH COUNTY, FLORIDA

DATE:	OCTOBER 2018
P.A. NO.	B8703.00
DWG. NO.	44-40-13-03
SHEET:	C5-1

BAR IS EQUAL TO ONE INCH
ON ORIGINAL DRAWING



ADJUST ALL SCALED
DIMENSIONS ACCORDINGLY

CADD FILE:
K:\well\wellsamp\DWG\
SAMPCS01 C5-1.dwg

NO.	DATE	BY	REVISION
-----	------	----	----------

SEAL

JOHN P. CAIRNES
FLORIDA P.E. NO. 74737

DATE _____

FLORIDA E.B. NO. 48

MOCK•ROOS
CONSULTING ENGINEERS

5720 Corporate Way, West Palm Beach, Florida 33407 (561) 683-3113, www.MockRoos.com

FLORIDA L.B. NO. 48

FIELD: ----

DRAWN: TDT

DESIGN: JPC

APPR: GGG

SCALE AS SHOWN