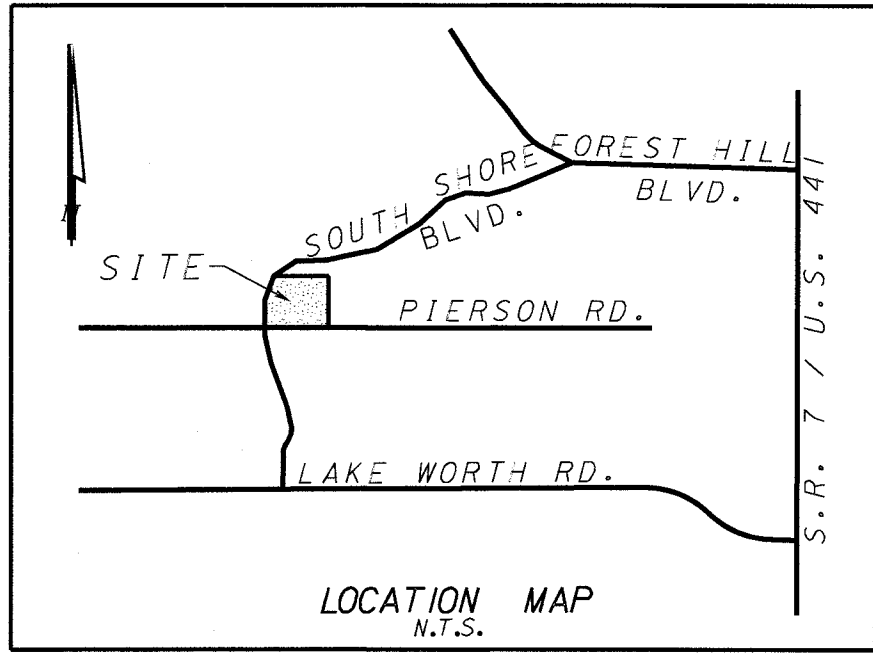


Exhibit C - Circulation Plan



LEGEND:

ACCESS POINT

PAVED PUBLIC CIRCULATION

UNPAVED PUBLIC CIRCULATION  
(DUST CONTROL TO BE PROVIDED)

PRIVATE CIRCULATION  
(EXHIBITORS/STAFF/  
OFFICIALS/VENDORS)

EMERGENCY ACCESS ONLY

PEDESTRIAN CIRCULATION

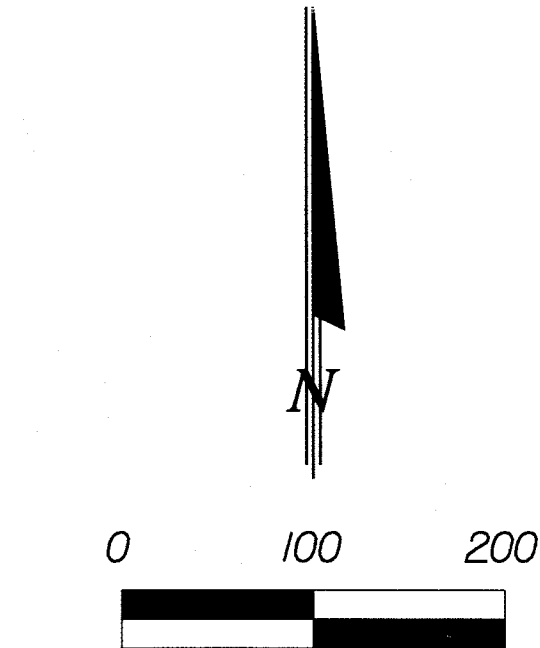
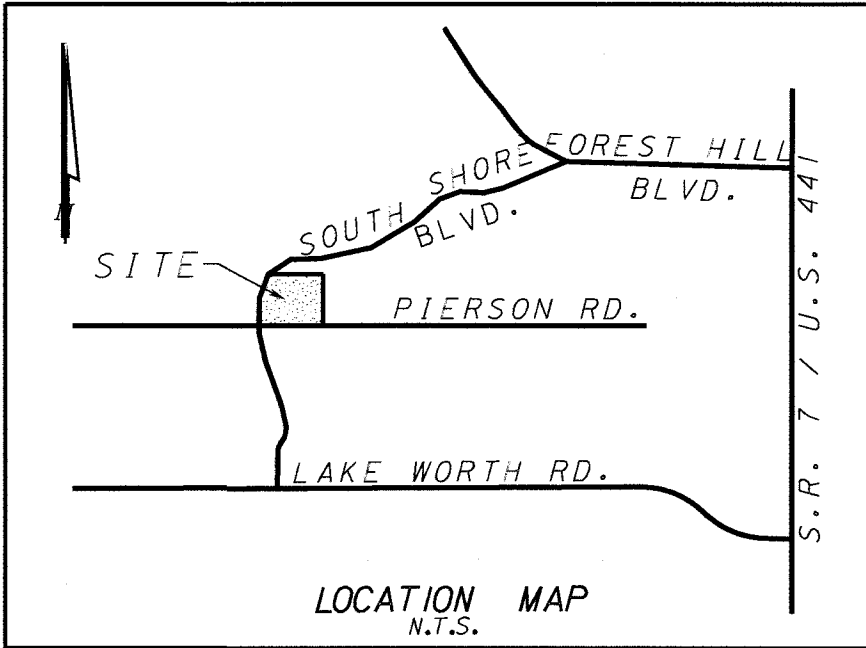
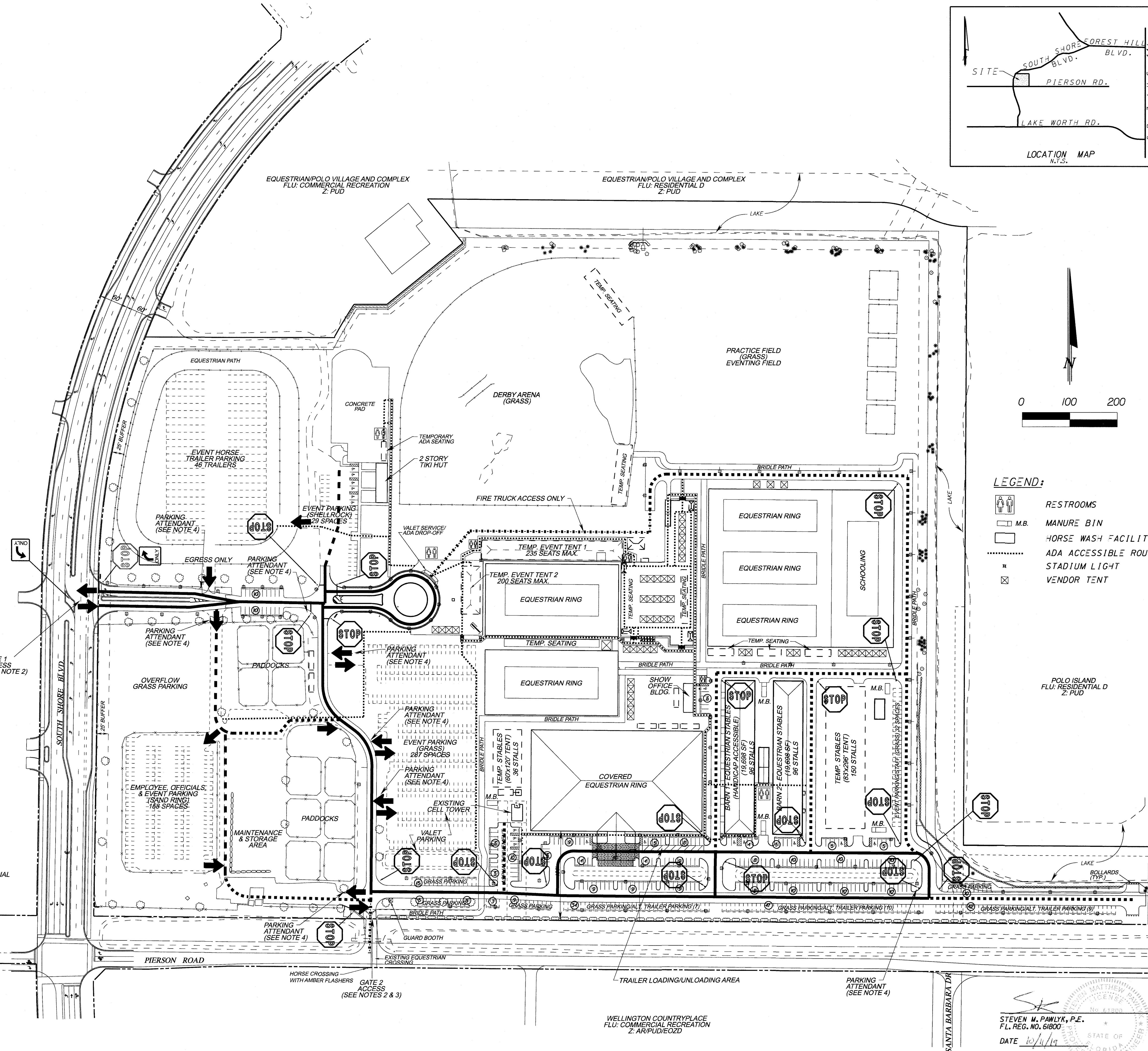
CIRCULATION PLAN NOTES:

1. THIS PLAN SERVES TO DESIGNATE PARKING AREAS AND TO PROVIDE ROUTES FOR CIRCULATION OF VEHICLES, HORSES AND PEDESTRIANS.
2. GATES 1 AND 2 SHALL BE MANAGED BY EVENT STAFF TO DIRECT TRAFFIC IN AND OUT OF THE PROPERTY TO PREVENT STACKING OF VEHICLES ON SOUTH SHORE BLVD. AND PIERSON RD. THE PALM BEACH COUNTY SHERIFF'S OFFICE (PBSO) SHALL BE CONTRACTED AS NEEDED BASED UPON ANTICIPATED ATTENDANCE FOR TRAFFIC CONTROL ON SOUTH SHORE BLVD. AND PIERSON RD., AND SHALL BE PRESENT 2 HOURS BEFORE THE START OF THE EVENT AND 1 HOUR AFTER THE END OF THE EVENT.
3. THE SOUTH SHORE BLVD. ACCESS POINT HAS BE DESIGNATED AS THE PRIMARY INGRESS/EGRESS TO THE FACILITY. THE PIERSON RD. ACCESS POINT MAY BE USED FOR INGRESS/EGRESS CONSISTENT WITH THE APPROVED MASTER PLAN FOR THE SITE.
4. A PARKING ATTENDANT SHALL BE STATIONED AT THE LOCATIONS SHOWN TO DIRECT TRAFFIC TO THE AUTHORIZED PARKING AREAS.
5. A WATER TRUCK SHALL BE USED TO CONTROL DUST ON THE UNPAVED PUBLIC CIRCULATION ROUTE.
6. PBSO SHALL BE CONTRACTED FOR EVENTS AS NEEDED FOR PEAK HOUR TRAFFIC CONTROL AT THE SOUTH SHORE BLVD. AND PIERSON RD. INTERSECTION TO MITIGATE TRAFFIC IMPACTS FROM THE EVENTS.

| PARKING SUMMARY:          |            |
|---------------------------|------------|
| PAVED PARKING             | 213 SPACES |
| GRASS PARKING (BARNS)     | 170 SPACES |
| TEMPORARY EVENT PARKING   | 506 SPACES |
| TOTAL PARKING             | 889 SPACES |
| HANDICAP PARKING          | 18 SPACES  |
| ALTERNATE TRAILER PARKING | 72 SPACES  |

HORSE SHOW SERVICES  
RETAIL COMPLEX  
FLU: COMMUNITY COMMERCIAL  
Z: PUD

| REVISIONS |      |    |             |
|-----------|------|----|-------------|
| NO.       | DATE | BY | DESCRIPTION |
|           |      |    |             |
|           |      |    |             |
|           |      |    |             |
|           |      |    |             |
|           |      |    |             |



LEGEND:

- RESTROOMS
- MANURE BIN
- HORSE WASH FACILITIES
- ADA ACCESSIBLE ROUTE
- STADIUM LIGHT
- VENDOR TENT

POLO ISLAND  
FLU: RESIDENTIAL D  
Z: PUD

STEVEN M. PAWLYK, P.E.  
FL. REG. NO. 61800  
DATE 10/11/19

2019 / 2020  
SEASONAL EQUESTRIAN PERMIT  
CIRCULATION PLAN

S. SEXTON ENGINEERING ASSOCIATES, INC.  
CONSULTING ENGINEERS AND SURVEYORS  
110 PONCE DE LEON STREET, SUITE 100  
ROYAL PALM BEACH, FLORIDA 33411  
PHONE 561-792-3122 FAX 561-792-3168  
FL. REGISTRATIONS: LB0006837, EB 0007864

GLOBAL DRESSAGE COMPLEX  
WELLINGTON, FLORIDA