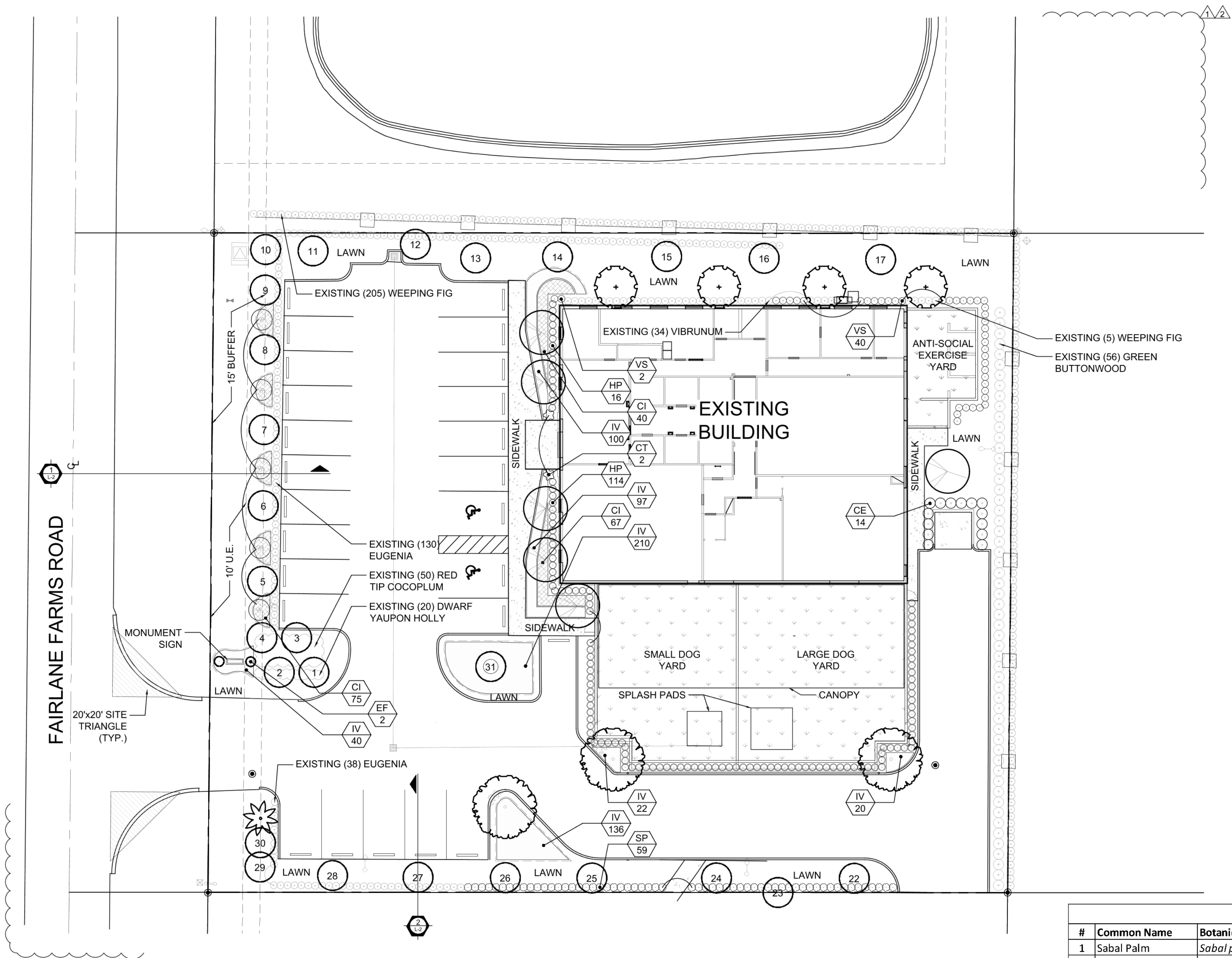


Exhibit F - Landscape Plan



FAIRLANE FARMS ROAD

LANDSCAPE PLAN

Scale: 1"=20'-0"



SYMBOL LEGEND

#x Tree to Remain

MITIGATION REQUIRED: 11" TREE DBH REMOVED = 11" DBH

MITIGATION BREAKDOWN	REQ.	PROV.
TREE DBH REPLACEMENT:	11" DBH	12" DBH (6 Trees 2" DBH per Tree)

Tree Disposition					
#	Common Name	Botanical Name	DBH (in)	Disposition	Tree Credit
1	Sabal Palm	<i>Sabal palmetto</i>	12	Remain	Palm
2	Sabal Palm	<i>Sabal palmetto</i>	12	Remain	Palm
3	Sabal Palm	<i>Sabal palmetto</i>	12	Remain	Palm
4	Sabal Palm	<i>Sabal palmetto</i>	12	Remain	Palm
5	Live Oak	<i>Quercus virginiana</i>	16	Remain	3
6	Live Oak	<i>Quercus virginiana</i>	13	Remain	3
7	Live Oak	<i>Quercus virginiana</i>	19	Remain	4
8	Live Oak	<i>Quercus virginiana</i>	17	Remain	4
9	Sabal Palm	<i>Sabal palmetto</i>	12	Remain	Palm
10	Sabal Palm	<i>Sabal palmetto</i>	12	Remain	Palm
11	Live Oak	<i>Quercus virginiana</i>	20	Remain	4
12	Live Oak	<i>Quercus virginiana</i>	12	Remain	3
13	Live Oak	<i>Quercus virginiana</i>	10	Remain	2
14	Live Oak	<i>Quercus virginiana</i>	19	Remain	4
15	Live Oak	<i>Quercus virginiana</i>	19	Remain	4
16	Live Oak	<i>Quercus virginiana</i>	14	Remain	3
17	Live Oak	<i>Quercus virginiana</i>	14	Remain	3
18	Sabal Palm	<i>Sabal palmetto</i>	12	Remove	
19	Sabal Palm	<i>Sabal palmetto</i>	12	Remove	
20	Sabal Palm	<i>Sabal palmetto</i>	12	Remove	
21	Live Oak	<i>Quercus virginiana</i>	11	Remove	
22	Live Oak	<i>Quercus virginiana</i>	7	Remain	2
23	Live Oak	<i>Quercus virginiana</i>	12	Remain	3
24	Live Oak	<i>Quercus virginiana</i>	10	Remain	2
25	Live Oak	<i>Quercus virginiana</i>	8	Remain	2
26	Live Oak	<i>Quercus virginiana</i>	14	Remain	3
27	Live Oak	<i>Quercus virginiana</i>	16	Remain	3
28	Live Oak	<i>Quercus virginiana</i>	21	Remain	4
29	Sabal Palm	<i>Sabal palmetto</i>	10	Remain	Palm
30	Sabal Palm	<i>Sabal palmetto</i>	13	Remain	Palm
31	Live Oak	<i>Quercus virginiana</i>	18	Remain	4
Total Mitigation Required:			11" DBH	Total Tree Credits:	60

LANDSCAPE LEGEND Information Required to be Permanently Affixed to Plan			
Zoning District: <u>FZEC</u>	Net Lot Area <u>1.00</u> acres <u>43,793</u> s.f.		
OPEN SPACE	REQUIRED	PROVIDED	
A. Square Feet of open space required, as indicated on site plan: Net lot area = <u>43,793</u> s.f. x <u>15</u> % = <u>6,569</u> s.f.			
	6,569	17,605	
TREES			
A. No. trees required: 1 tree per 1,500 sf of lot area = <u>43,793</u> lot area / <u>1,500</u>			
	29	11*	
a. % Flowering Species Required: No. trees provided x 10% =	3	6	
b. % Palms Allowed: No. trees provided x 20% =	6	3*	
c. % Natives and Drought-Tolerant Required: No. trees provided x 50% =	14	29*	
d. Minimum # of Tree Species Required =	3	5*	
B. Right-of-Way Landscape Buffer (Type C Buffer): <u>163</u> linear feet			
a. (1) Shade Tree / 40 =	4	4*	
b. (1) Flowering or Small tree / 30 =	5	5	
C. Foundation Planting <u>190</u> linear feet of building facade / 20 =			
	10	10	
D. Perimeter Landscape Buffer (Type A Buffer) <u>190</u> linear feet / 30 =			
	6	6*	
E. Total Trees Required A + B + C + D = <u>54</u> Total Trees			
	54	40*	
F. Tree Credits from Preserved Existing Trees (See Tree Disposition Chart on L-1 for more details)			
	-	60	
G. Total Trees Provided E + F = <u>100</u> Total Trees			
	54	100*	
SHRUBS			
A. No. shrubs required: 3 shrub per 1,500 sf of lot area			
	87	894*	
a. % Flowering Species Required: No. shrubs provided x 10% =	10	41	
b. % Natives and Drought-Tolerant Required: No. shrubs provided x 50% =	44	622*	
c. Minimum # of Shrub Species Required =	2	9*	
B. Right-of-Way Landscape Buffer (Type C Buffer): Continuous hedge			
a. <u>163</u> linear feet = (10) shrubs per 30 linear feet =	55	75	
C. Foundation Planting			
	Yes	Yes*	
D. Perimeter Landscape Buffer (Type A Buffer): Continuous hedge			
	Yes	Yes*	
SEE LANDSCAPE LIST			

* Includes 19 existing trees (19 natives), 8 existing palms (8 natives), and 538 shrubs (294 natives). See Tree Disposition Plan for details.

LANDSCAPE LIST			
TREES			
SYMBOL	QUAN.	PROPOSED MATERIAL	DESCRIPTION
	6	Bulnesia arborea	10' HT. X 5' SPR. 2" DBH.
		VERAWOOD	F.G., F.F.
	4	*Eugenia foetida	10' HT. X 5' SPR. 2" DBH.
		SPANISH STOPPER	F.G.
	3	*Quercus virginiana	14' HT. X 6' SPR. 2" DBH.
		LIVE OAK	F.G.
	5	Jatropa integririma	6' HT. X 4' SPR.
		JATROPHA TREE	30 GAL., FULL
	1	*Sabal palmetto	20' O.A. HT., 8' G.W., SMOOTH
		SABAL PALM	F.G.
SHRUBS AND GROUNDCOVERS			
SYMBOL	QUAN.	PROPOSED MATERIAL	DESCRIPTION
CE	14	*Conocarpus erectus	5' HT. X 36" SPR. / 36" O.C.
		GREEN BUTTONWOOD	7 GAL.
CI	182	*Chrysobalanus icaco	18" HT. X 18" SPR. / 18" O.C.
		GREEN COCOPLUM	3 GAL.
CT	2	Cordyline terminalis 'Dr. Brown'	3' HT. X 3' SPR.
		T1 PLANT	3 GAL.
EF	2	*Eugenia foetida 'TOPIARY CONE'	7' O.A. HT. TOPIARY CONE
		SPANISH STOPPER	10 GAL., FULL TO BASE
HP	130	*Hamelia patens	24" HT. X 24" SPR. / 24" O.C.
		FIREBUSH	3 GAL.
IV	625	*Ilex vomitoria 'Stokes Dwarf'	15" HT. X 15" SPR. / 15" O.C.
		DWARF YAUPON	3 GAL.
SP	59	Syzigium paniculatum	36" HT. X 24" SPR. / 24" O.C.
		EUGENIA	3 GAL.
VS	42	Viburnum suspensum	24" HT. X 24" SPR. / 24" O.C.
		SANDANQUA VIBURNUM	3 GAL.
LAWN	As Required	Stenotaphrum secundatum 'Floratum'	SOLID EVEN SOD
		ST. AUGUSTINE GRASS	

* DENOTES NATIVE SPECIES

WITKIN HULTS DESIGN GROUP

307 South 21st Avenue, Hollywood, Florida

Phone: 954.923.9681 Fax: 954.923.9689

www.witkindesign.com

K-9 WELLINGTON

3381 FAIRLANE FARMS ROAD, WELLINGTON, FL

LANDSCAPE PLAN

Project:

Revisions:	Date:	By:
11 City Comments	07.07.2020	KAT
21 City Comments	08.21.2020	KAT

Seal:

Lic. # LA0000889

Member: A.S.L.A.

Drawing: Landscape Plan

Date: 05/19/2020

Scale: See Left

Drawn by: KAT

Sheet No.:

L-1

Cad Id.: 2020-000