

PROJECT SCHEDULE		
SIGN TYPE/ DESCRIPTION:	QTY.:	PG.
A. LOGO TYPE BUILDING SIGN - REV ILLUM	ONE (1)	3 - 4
B. HOTEL BLDG SIGN - REV ILLUM	ONE (1)	5 + 7
C. DAYCARE BLDG SIGN - REV ILLUM	ONE (1)	6 - 7
D. CAST PLAQUE SIGN - BRASS	ONE (1)	8 - 9
E. RECEPTION PLATE LOGO SIGN	ONE (1)	10 - 11
F. ILLUM D/S MONUMENT SIGN	ONE (1)	12 - 13

PROJECT:

Exhibit G - Proposed Signage

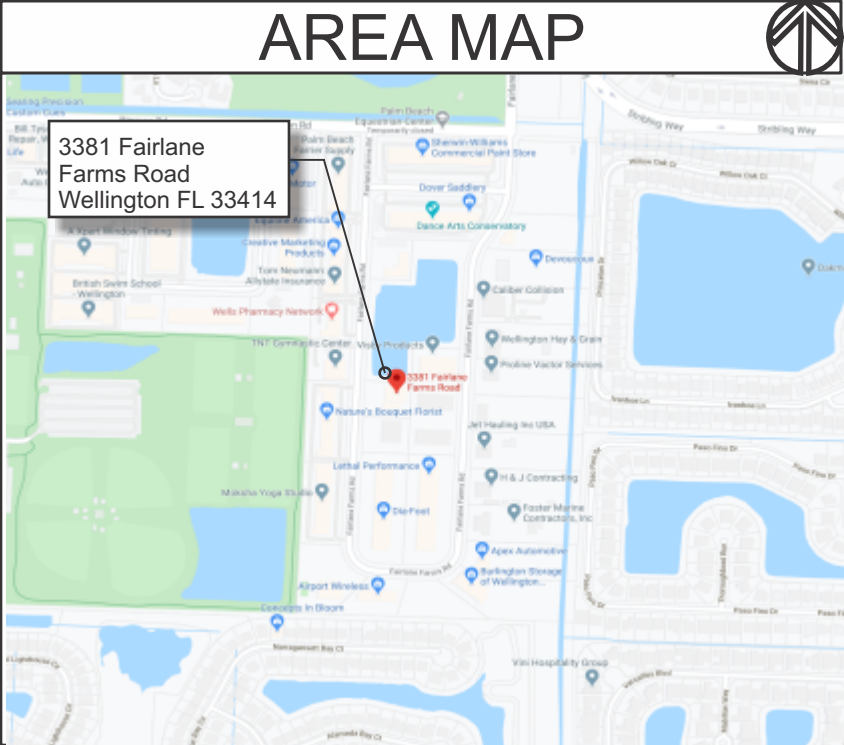


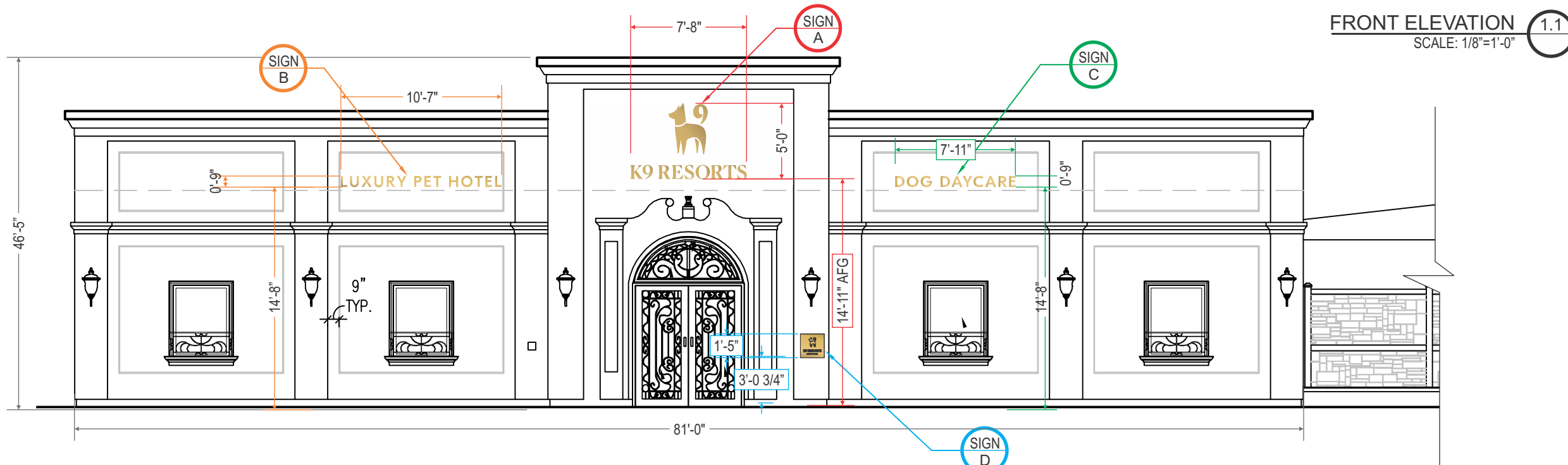
K9 RESORTS

3381 Fairlane Farms Road

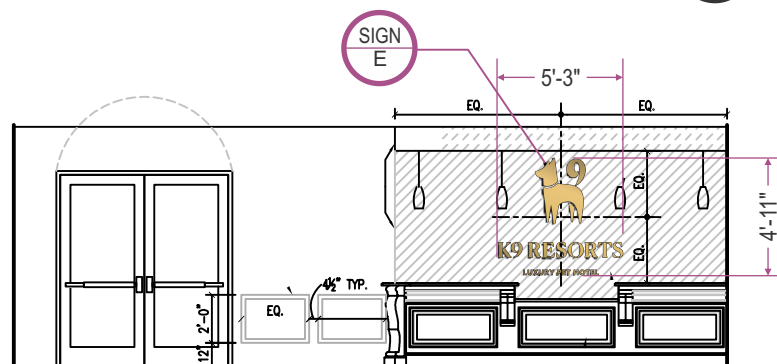
Wellington FL 33414

REVISIONS			
#	DATE	DB	NOTES
R1	08/19/2020	MF2	CHANGE MONUMENT SIGN SIZE AS REQUESTED





INTERIOR RECEPTION DESK ELEVATION 1.2
 SCALE: 1/8"=1'-0"







BRUSHED
BRASS

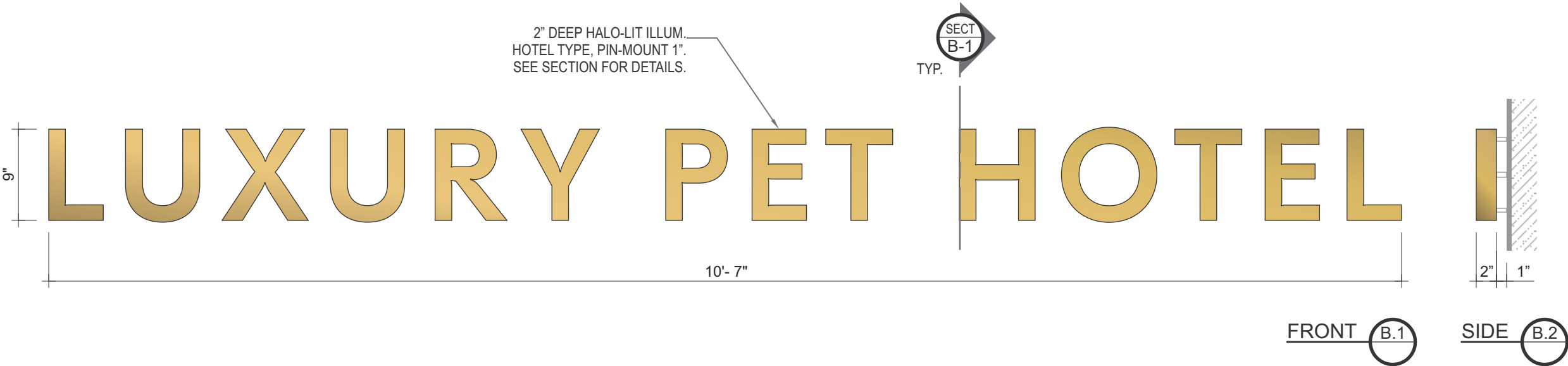
PIN-MNTD. HALO-LIT ILLUM. HOTEL TYPE

B

SCALE: 1"=1'-0"

QTY.: ONE (1)

AREA: 9" x 133.625" = 8.352' ∇





BRUSHED
BRASS

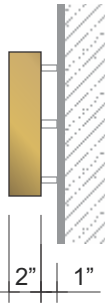
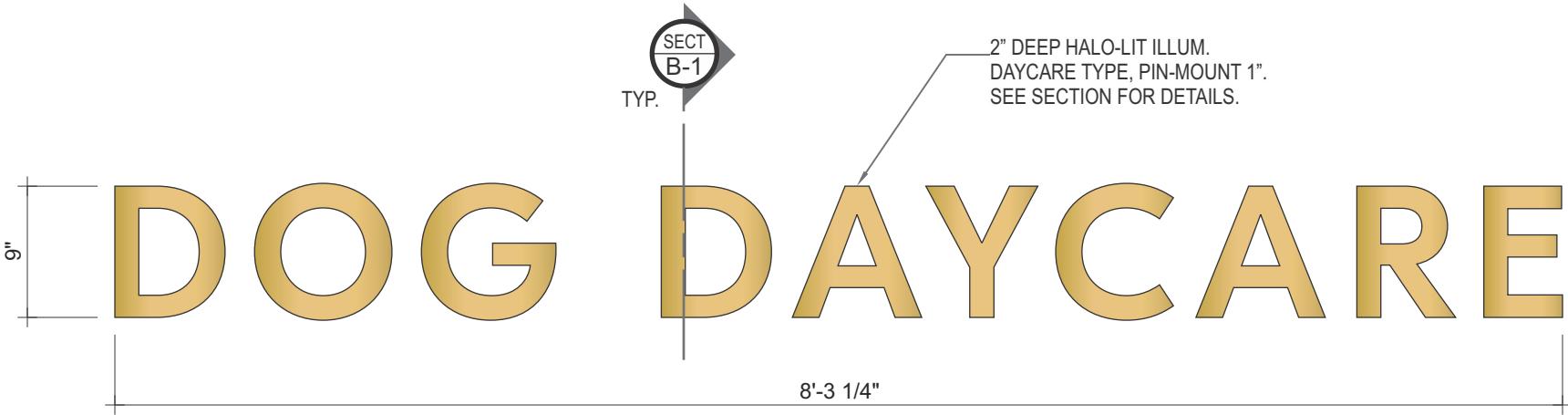
PIN-MNTD. HALO-LIT ILLUM. DAYCARE TYPE



SCALE: 1"=1'-0"

QTY.: ONE (1)

AREA: 9" x 99.25" = 6.203' ∇



TYP. FRONT (C.1)

TYP. SIDE (C.2)



DAYCARE HOURS PANEL

D

SCALE: 3"=1'-0"

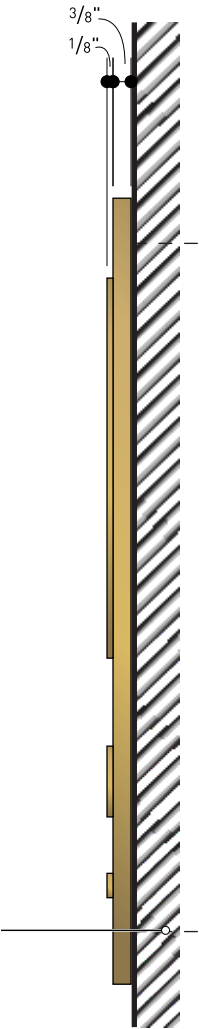
QTY.: ONE (1)

AREA: 15" x 12" = 1.25' ∅



FRONT

D.2



SIDE

D.2

D-1

D-1



1. CUSTOMER G.C. TO PROVIDE ADEQUATE WOOD OR MTL. BLOCKING IN CORRELATION W/ FAÇADE FRAMING AS REQUIRED.
2. INSTALLER IS TO V.I.F. & PROVIDE THE PROPER NON-CORROSIVE MOUNTING HARDWARE TO ENSURE SAFE INSTALLATION.
3. ALL EXTERIOR FAÇADE PENETRATIONS ARE TO BE WATERTIGHT.
4. INSTALLATION TO MEET CURRENT N.E.C., U.L. & LOCAL CODES. LOCATION OF THE DISCONNECT SWITCH AFTER INSTALLATION SHALL COMPLY WITH ARTICLE 600.6(A) (1) OF THE NATION ELECTRICAL CODE

M-2:	STUD & ADHESIVE (V.I.F.).
------	---------------------------





BRUSHED
BRASS

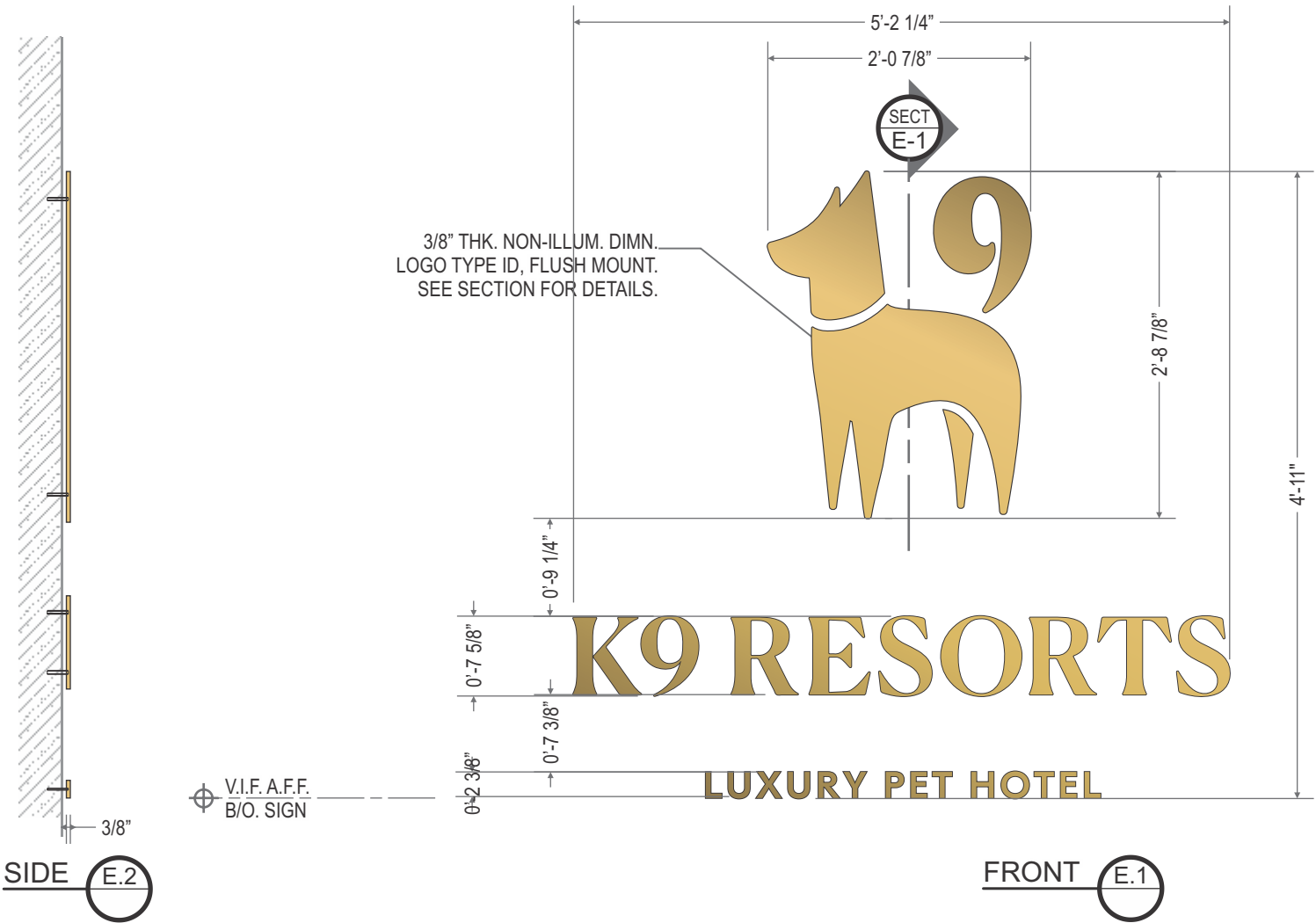
NON-ILLUM. DIMN. LOGO TYPE ID @ RECEPTION

E

SCALE: 3/4"=1'-0"

QTY.: ONE (1)

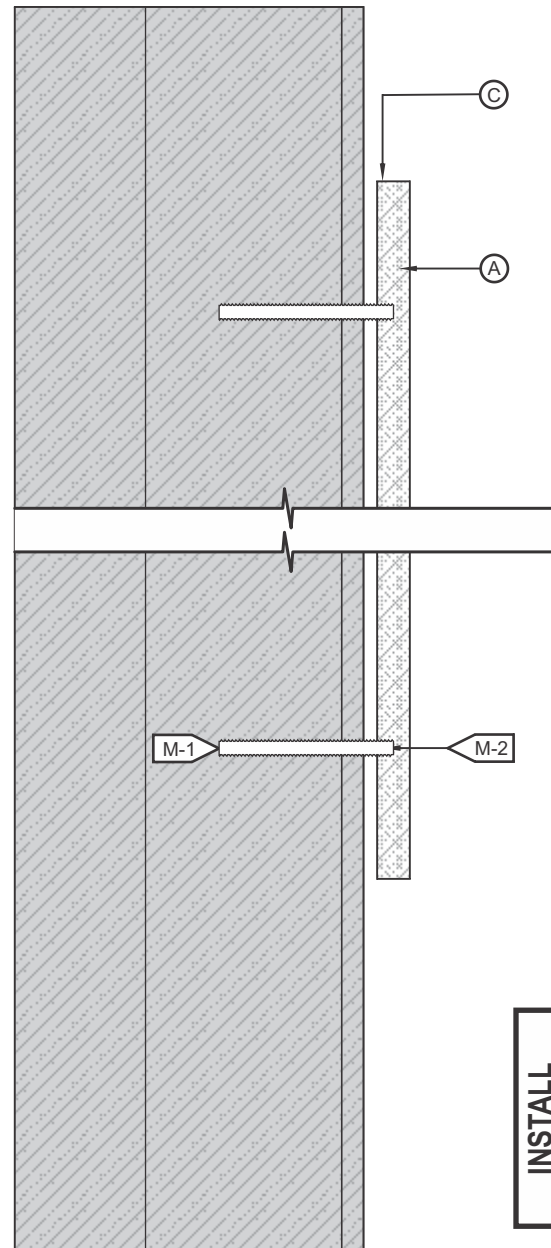
AREA: 45" x 48" = 15' ∅



TYP. FLUSH MOUNT DIMENSIONAL TYPE SECTION DETAIL

SCALE: N.T.S.

E-1



(A) FACE

MATERIAL:	3/8" PLATE.
-----------	-------------

COLOR/ FINISH:	BRUSHED BRASS FINISH.
----------------	-----------------------

© RETURN

DEPTH:	3/8".
--------	-------

COLOR/ FINISH:	BRUSHED BRASS FINISH.
----------------	-----------------------

(M) MOUNTING

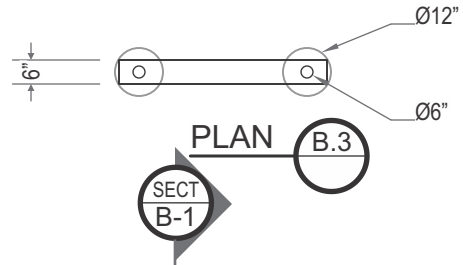
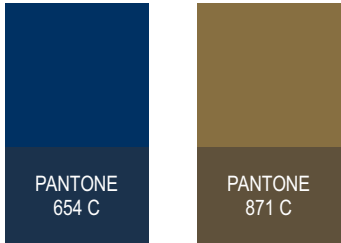
M-1:	SEE MOUNTING NOTE. SUPPLY PAPER PATTERN.
------	--

M-2:	10-24 STUDS & ADHESIVE. 1/4" SPACERS
------	--------------------------------------

INSTALL

1. CUSTOMER G.C. TO PROVIDE ADEQUATE WOOD OR MTL. BLOCKING IN CORRELATION W/ FACADE FRAMING AS REQUIRED.
 2. INSTALLER IS TO V.I.F. & PROVIDE THE PROPER NON-CORROSIVE MOUNTING HARDWARE TO ENSURE SAFE INSTALLATION.
 3. ALL EXTERIOR FACADE PENETRATIONS TO BE WATERTIGHT.
 4. INSTALLATION TO MEET CURRENT N.E.C., U.L. & LOCAL CODES.
- LOCATION OF THE DISCONNECT SWITCH AFTER INSTALLATION SHALL COMPLY WITH ARTICLE 600.6(A) (1) OF THE NATION ELECTRICAL CODE





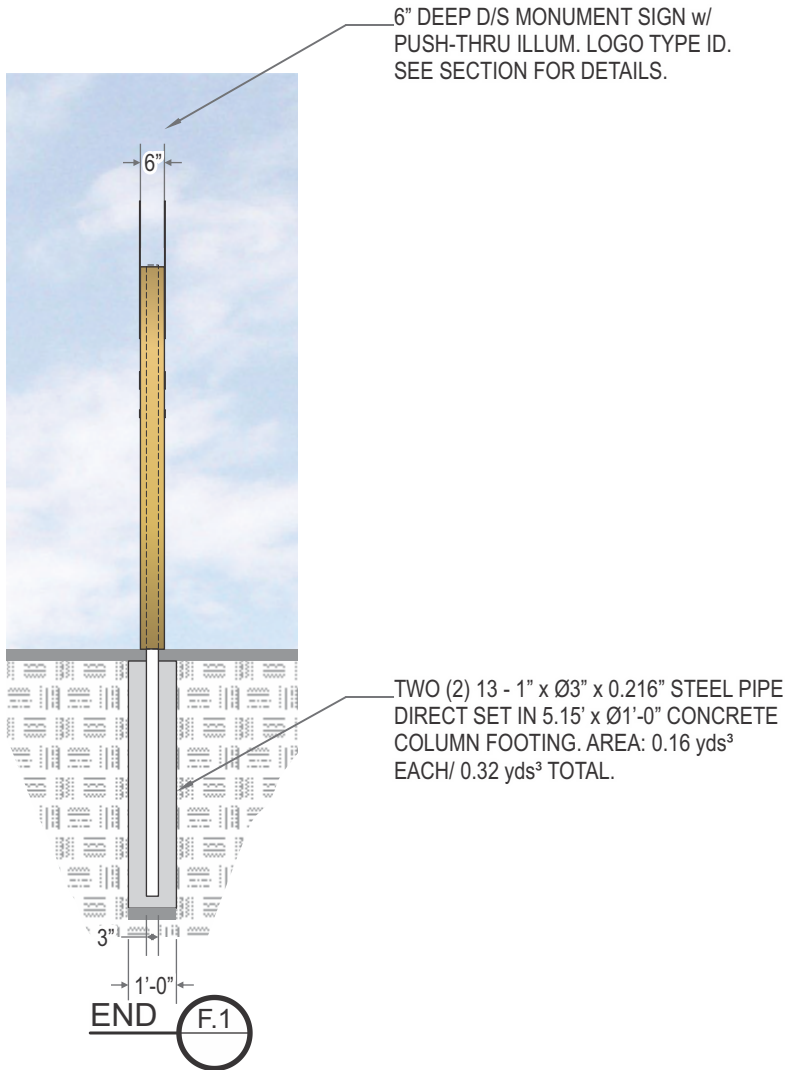
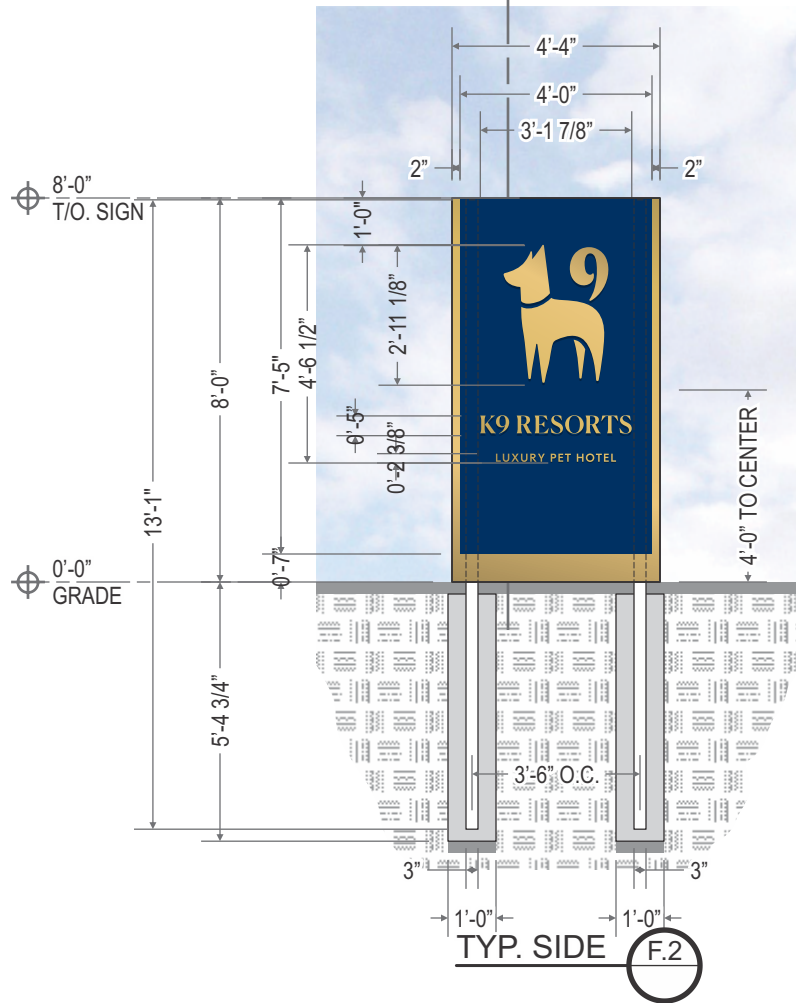
D/S MONUMENT SIGN w/ PUSH-THRU ILLUM. LOGO TYPE ID

SCALE: 1/4"=1'-0"

QTY.: ONE (1)

AREA: 96" x 52" = 34.66' ∇

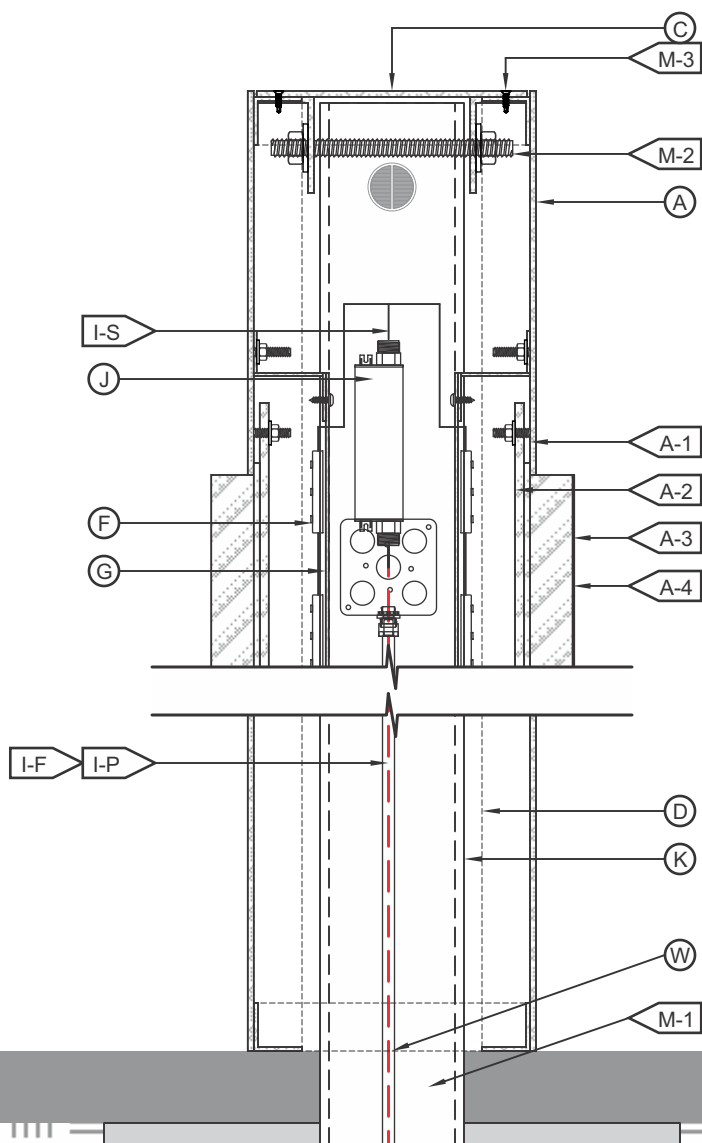
F



TYP. D/S MONUMENT SIGN w/ PUSH-THRU ILLUM. LOGO TYPE ID SECTION DETAIL

F-1

SCALE: 3"=1'-0"



A FACE	
MATERIAL:	1/8" ALUM. w/ CUT-OUT LOGO TYPE.
COLOR/ FINISH:	GOLD TO MATCH PMS #871 C/ METALLIC.
	BLUE AREA TO MATCH PMS #654 C/ SATIN.
A-1: MNTG.	WELDED 10-24 STUD & NUT.
A-2: BACK-UP	3/16" #2447 TRANSLUCENT WHITE ACRYLIC.
A-3: PUSH-THRU	3/4" TRANSLUCENT CLEAR ACRYLIC w/ 1/8" KERF EDGE.
A-4: VINYL	1st SURFACE ADHESIVE VINYL FILM. APPLY @ FACE.
COLOR:	3M 3630-141 GOLD NUGGET TRANSLUCENT.
C RETURN	
DEPTH:	6" DEEP O.A.
MATERIAL:	~0.080" ALUM., REMOVABLE TOP FOR INSTALL.
COLOR/ FINISH:	GOLD TO MATCH PMS #871 C/ METALLIC.
D FRAME	
MATERIAL:	1 1/2" x 1 1/2" ALUM. ANGLE FRAME.
F ILLUMINATION	
TYPE:	6500°K WHITE LEDS. SEE FABRICATOR NOTE.
E BAFFLE	
MATERIAL:	0.040" PRE-COAT WHITE ALUM.

I WIRING	
I-F: FEED	SEE ELEC. NOTE. 120V PRIMARY IN J-BOX BY OTHERS.
I-P: PRIMARY	12awg FEED IN Ø1/2" SEAL-TITE w/ CONNECTORS.
I-S: SECONDARY	U.L. APPROVED CLASS II LOW VOLTAGE WIRE.
I-D: DISCONNECT	120V DISCONNECT SWITCH. LOCATION T.B.D.
J POWER SUPPLY	
TYPE:	INTERNAL LED POWER SUPPLY HOUSED IN SIGN.
	TYP. J-BOX TO HOUSE ELEC. CONNECTION TO PRIMARY.
VOLTAGE:	120V.
K POLE SUPPORT	
MATERIAL:	TWO (2) 16' x Ø3" x 0.216" STEEL PIPE DIRECT SET IN
	5.15' x Ø1'-0" CONCRETE COLUMN FOOTING.
	AREA: 0.16 yds³ EACH/ 0.32 yds³ TOTAL.
M MOUNTING	
M-1:	SEE INSTALLATION NOTE.
M-2:	Ø3/8" BOLT, NUT & WASHERS THRU ALUM. ANGLE POLE POCKET.
M-3:	FLUSH FITTING Ø1/8" MECH. FASTENER. FINISH TO MATCH.
W WATER DRAIN'G.	
TYPE:	OPEN BOTTOM/ DRAINAGE @ B/O. SIGN TO GRADE/ EARTH.

120V
INSTALL

1. CUSTOMER G.C. TO PROVIDE ADEQUATE WOOD OR MTL. BLOCKING IN CORRELATION W/ FACADE FRAMING AS REQUIRED.

2. INSTALLER IS TO V.I.F. & PROVIDE THE PROPER NON-CORROSIVE MOUNTING HARDWARE TO ENSURE SAFE INSTALLATION.

3. ALL EXTERIOR FACADE PENETRATIONS TO BE WATERTIGHT.

4. INSTALLATION TO MEET CURRENT N.E.C., U.L. & LOCAL CODES. LOCATION OF THE DISCONNECT SWITCH AFTER INSTALLATION SHALL COMPLY WITH ARTICLE 600.6(A) (1) OF THE NATION ELECTRICAL CODE

ELECTRICAL

1. ALL ELECTRICAL COMPONENTS TO BE U.L. APPROVED.

2. CUSTOMER IS RESPONSIBLE FOR ONE (1) 120v/ 20a DEDICATED CIRCUIT w/ GROUND PER SIGN TO WITHIN 6' OF SIGN.

3. THIS SIGN IS INTENDED TO BE INSTALLED IN ACCORDING W/ THE REQUIREMENTS OF ARTICLE 600 OF THE NATIONAL ELECTRICAL CODE AND/OR OTHER APPLICABLE LOCAL CODES. THIS INCLUDES PROPER GROUNDING & BONDING OF THE SIGN.

FABRICATOR

1. PLACEMENT OF LIGHTING ELEMENTS FOR OPTIMUM ILLUMINATION OF SIGN TO BE DETERMINED IN PRODUCTION.

2. MANUFACTURER & U.L. LABELS TO BE APPLIED & VISIBLE FROM THE GROUND. LOCATED ON THE LAST CHANNEL LETTER OR END OF THE SIGN BOX/FREESTANDING SIGN

UL

ALL ELECTRICAL COMPONENTS ARE TO BE UL APPROVED

TRIANGLE
SIGN SERVICES

11 Azar Court • P.O. Box 24186
Baltimore, Maryland 21227
T: 410-247-5300 • F: 410 247-1944
Reproduction In Whole or Part
Prohibited without Express
Permission of Triangle S & S © TSS

CLIENT & LOCATION

K9 RESORTS

3381 Fairlane Farms Road
Wellington FL 33414

LEAD NO.

192228 R1

DATE

4/20/2020

REVIEWED BY

SHEET NO.

13 of 13

SM - PM

ZF

DRAWN BY

MF2

SEG. NO.