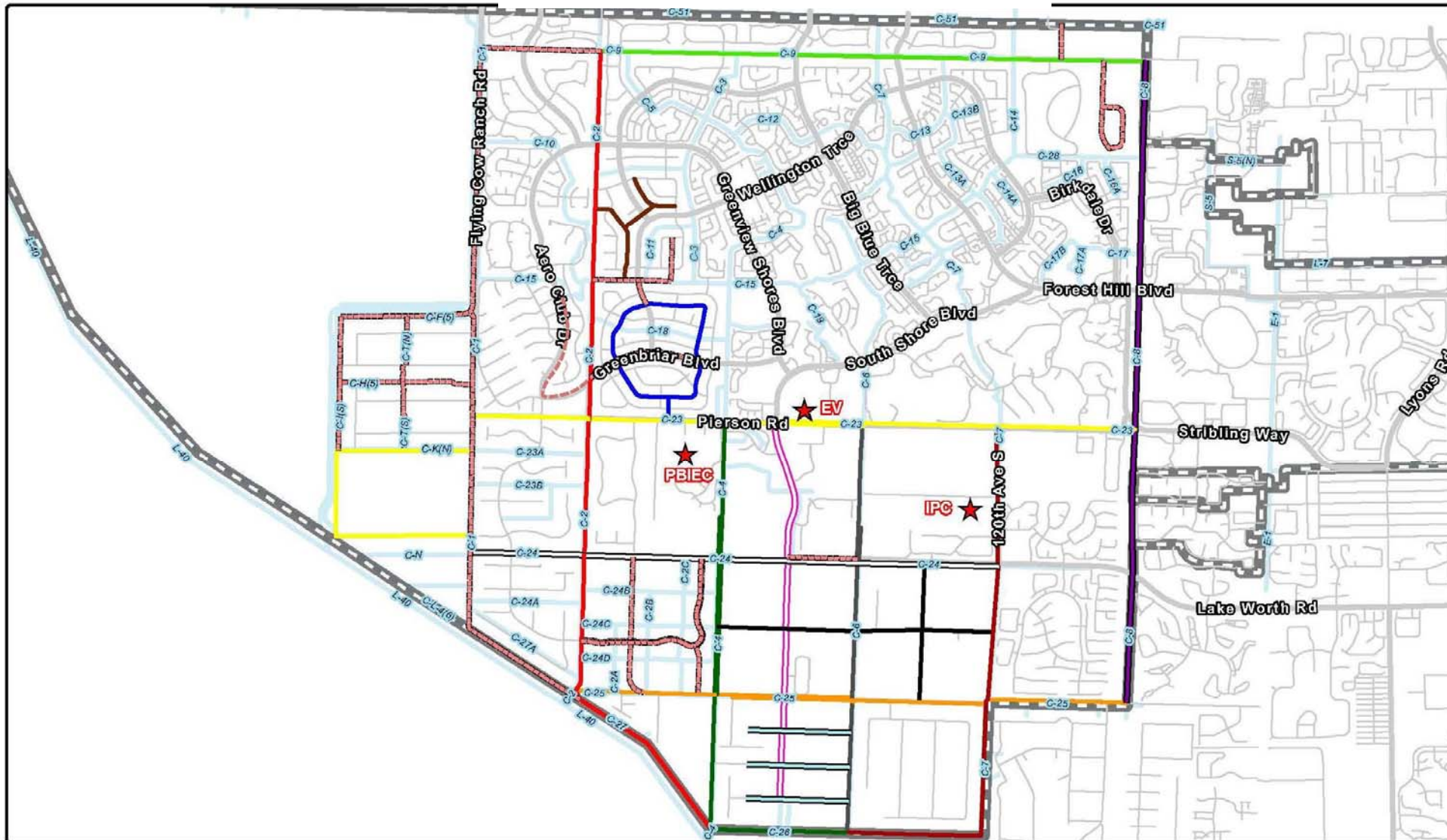


Copyright 2016 - City of Wellington
 The data is provided "as is" without warranty of any kind. The user or customer is responsible for the use of the data. The City of Wellington is not responsible for any loss or damage resulting from the use of the data. The City of Wellington is not responsible for any loss or damage resulting from the use of the data. The City of Wellington is not responsible for any loss or damage resulting from the use of the data.

Adopted by
 Ordinance 2016-16

- Private Trails
- Public Trails
- Major Equine Destination
- Equestrian Preserve Area
- Wellington



Wellington • 12300 Forest Hill Blvd • Wellington, FL 33414 • 561.791.4000 • www.wellingtonfl.gov

000000	1	DATE	1/22/2015
1	1	DRAWN	Christian Halsey
		SCALE	1 in = 1 mile
		REVIEWED	Mike O'Sullivan
		FILED	TellJill_HO-Chapman 11/17



Equestrian Circulation Plan- Existing & Currently Planned Elements

Black Trail	Brown Trail	Green Trail	Pink Trail	White Trail	Public Trails	Major Streets
Blue Trail	Dark Green Trail	Light Blue Trail	Purple Trail	Yellow Trail	Canals	Village Boundary
Brick Red Trail	Gray Trail	Orange Trail	Red Trail	Gray Trail	Minor Streets	Major Equestrian Destinations

