

Exhibit B - Chicken Salad Chick Proposed Site Plan

ELEVATIONS ARE BASED ON NORTH AMERICAN
VERTICAL DATUM OF 1988 (NAVD 88)

SITE DATA

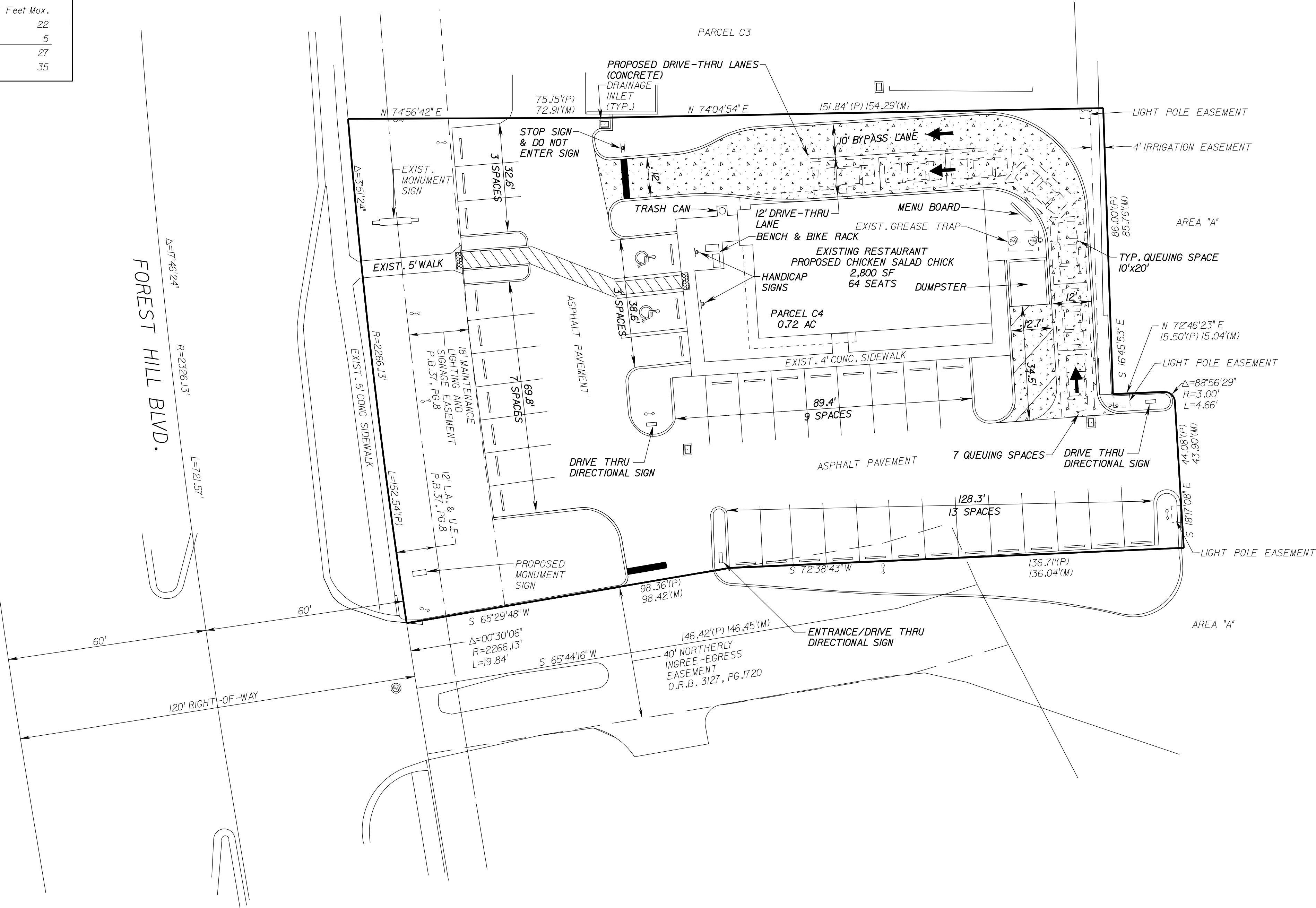
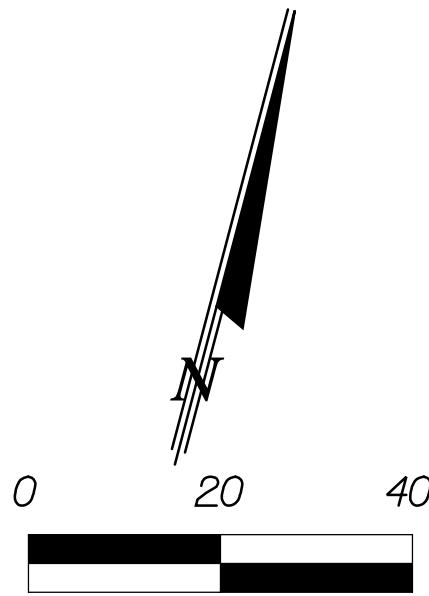
Overall Project Data:	
Petition Number	2020-0007 ASA
Name of Project	Chicken Salad Chick
Project Address	12792 Forest Hill Blvd.
Proposed Use	Restaurant with Drive-thru
Future Land Use Designation	Community Commercial
Zoning District	Wellington PUD
Section/Township/Range	3/44S/4E
Property Control Number	73-41-44-03-20-003-0040
Site Area	0.73 Ac
Gross Floor Area	2,800 sf
Floor Area Ratio	0.09
Building Coverage	8.8%
Impervious Area	72.6%
Buildings	0.06 Ac
Pavement/Driveways/Paths	0.47 Ac
Pervious Area	27.4%
Open Space	0.20 Ac
Building Height	35 Feet Max.
Parking Required: 1 Space / 3 Seats x 64 Seats	22
1 Space / Employee x 5 Employees	5
Total	27
Parking Provided	35

LEGAL DESCRIPTION:

PARCEL "C4", ACCORDING TO THE PLAT OF PINES OF WELLINGTON TRACT "C"
REPLAT, AS RECORDED IN PLAT BOOK 37, PAGE 8, OF THE PUBLIC RECORDS
OF PALM BEACH COUNTY, FLORIDA.

CONTAINING 0.73 ACRES MORE OR LESS.

SUBJECT TO EASEMENTS, RESTRICTIONS, RESERVATIONS AND RIGHTS-OF-WAY
OF RECORD.



DEVELOPMENT TEAM

PROPERTY OWNER:

ACTION BUSINESS CORP.
324 SW 16th STREET
BELLE GLADE, FLORIDA 33430
PHONE 561-708-8584

PLANNER/ENGINEER/SURVEYOR:

SEXTON ENGINEERING ASSOCIATES, INC.
110 PONCE DE LEON, SUITE 100
ROYAL PALM BEACH, FLORIDA 33411
PHONE 561-792-3122

TRAFFIC ENGINEER:

VIA PLANNING, INC.
2101 WEST COMMERCIAL BLVD., SUITE 3200
FORT LAUDERDALE, FLORIDA 33309
PHONE 954-560-5251

LANDSCAPE ARCHITECT:

SCHMIDT NICHOLS
1551 N. FLAGLER DRIVE, SUITE 102
WEST PALM BEACH, FLORIDA 33401
PHONE 561-684-6141

SITE PLAN

S. SEXTON ENGINEERING ASSOCIATES, INC.

CONSULTING ENGINEERS AND SURVEYORS

110 PONCE DE LEON STREET, SUITE 100

ROYAL PALM BEACH, FLORIDA 33411

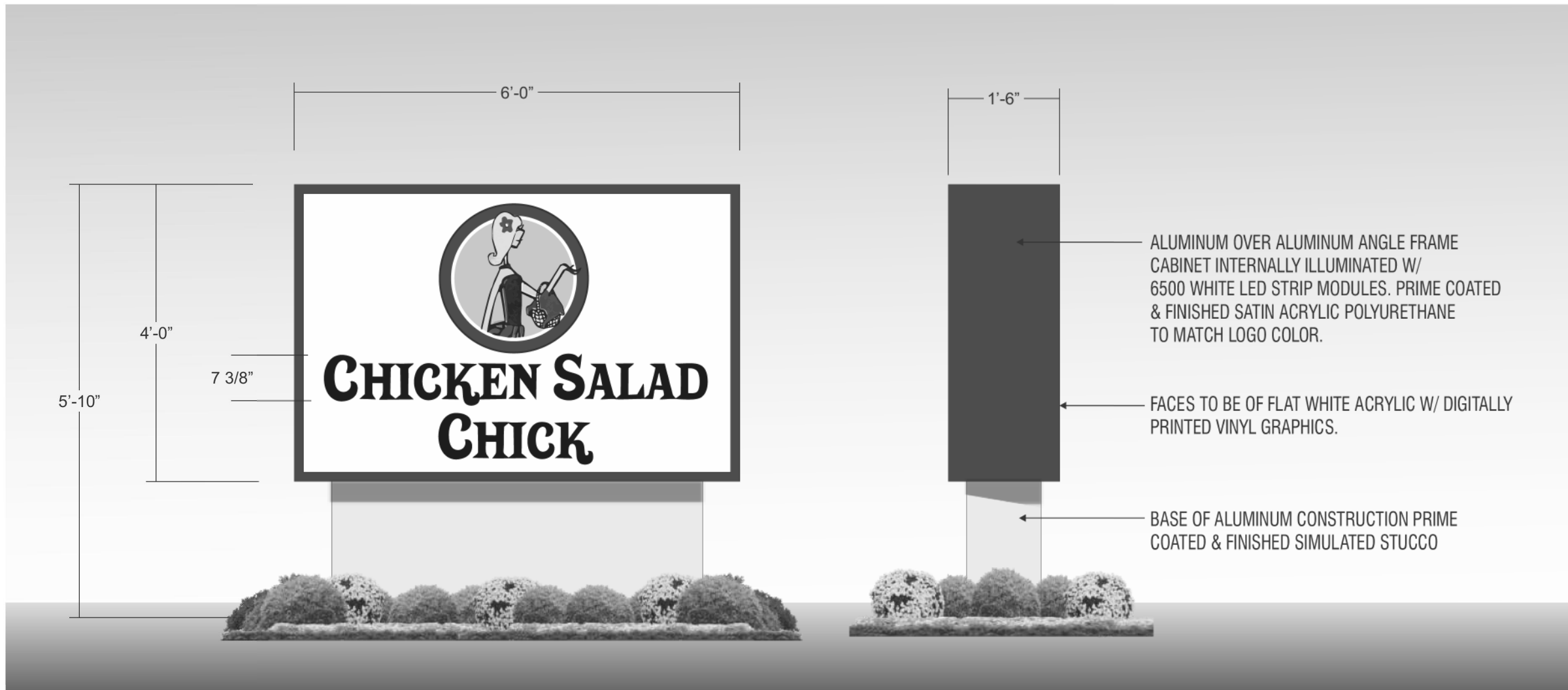
PHONE 561-792-3122 FAX 561-792-3168

FL. REGISTRATIONS: LB0006837, EB 0007864

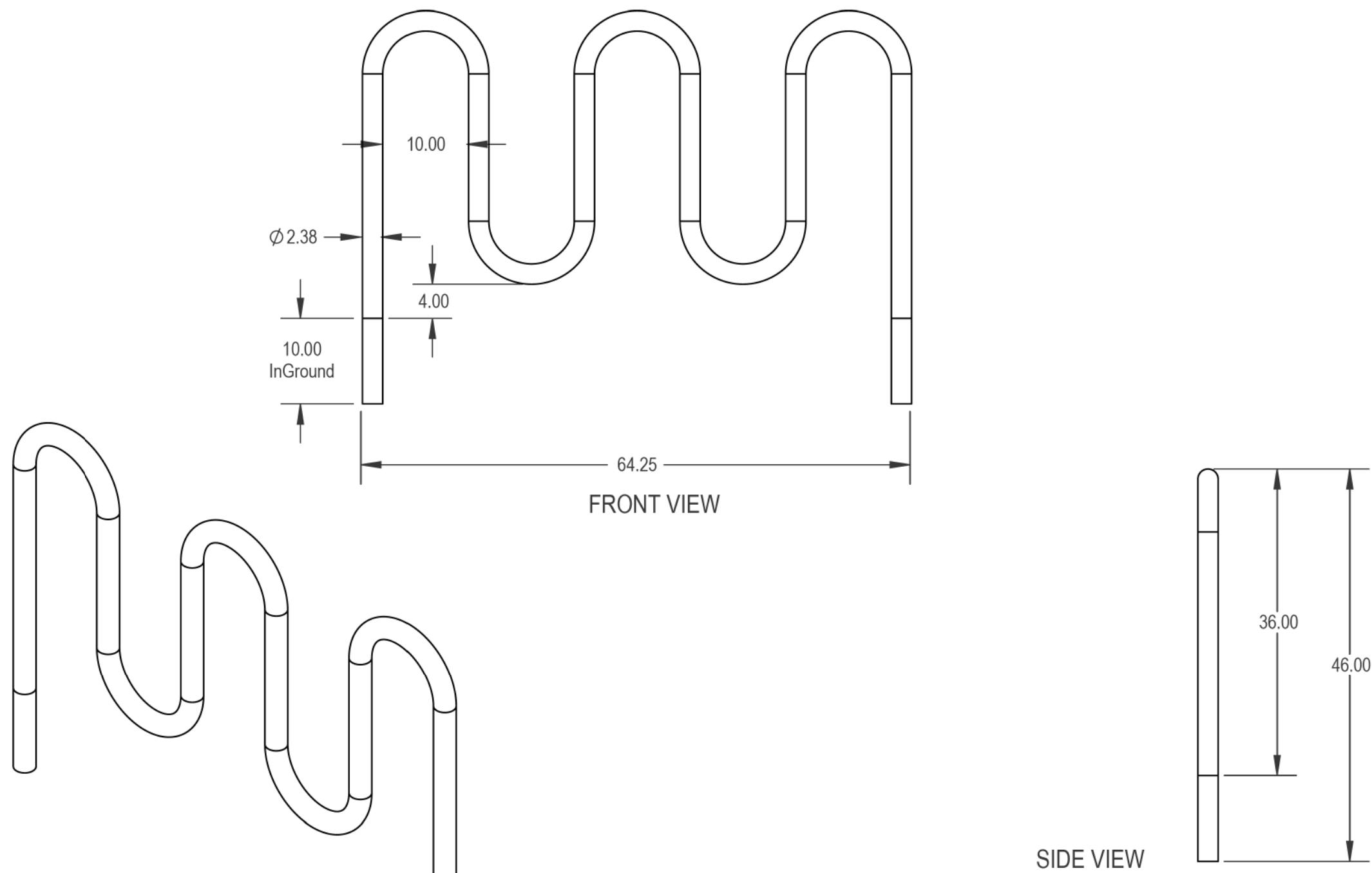
CHICKEN SALAD CHICK
12792 FOREST HILL BLVD.
WELLINGTON, FLORIDA

REVISIONS

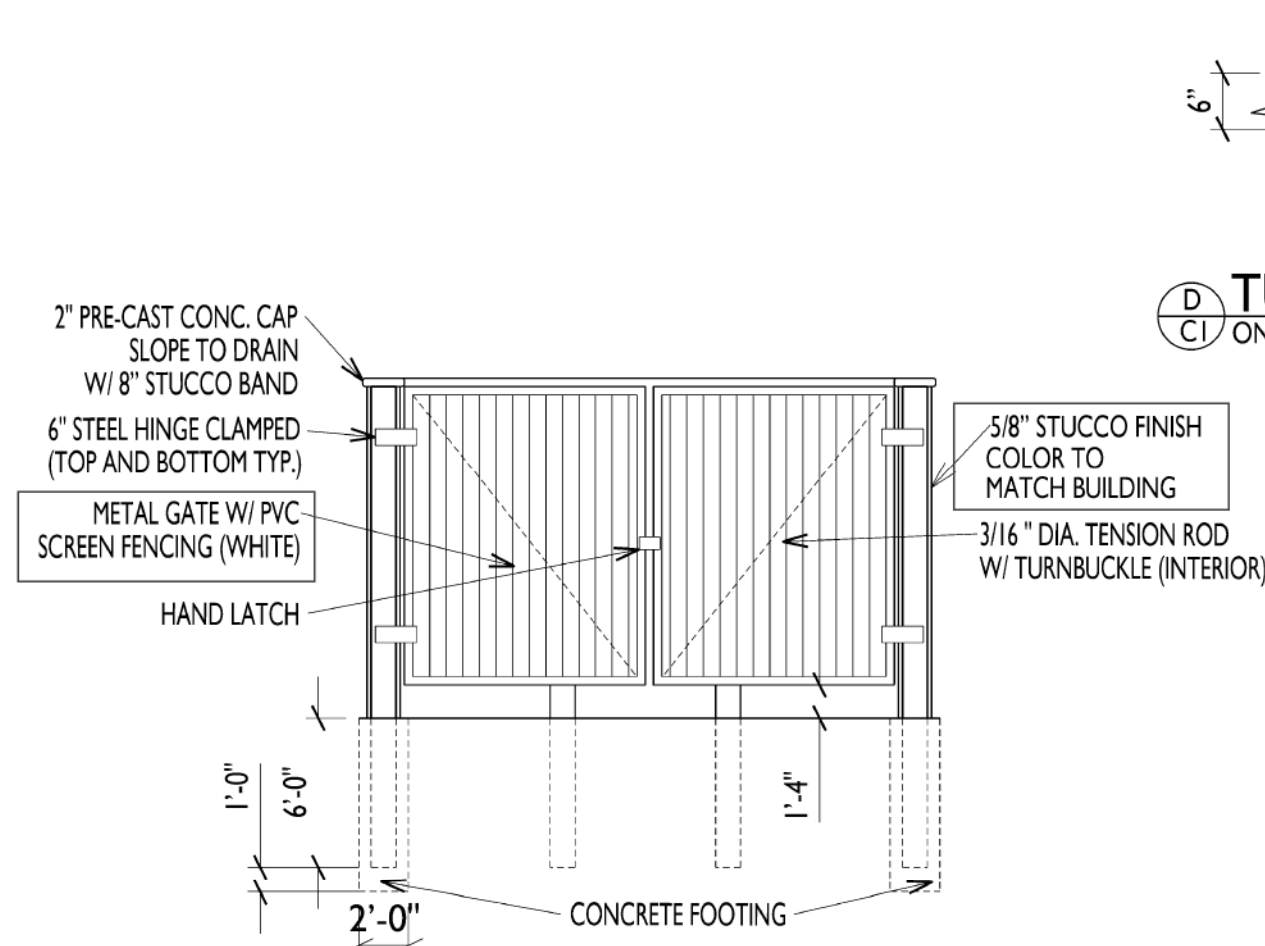
NO.	DATE	BY	DESCRIPTION
1	02/15/2021	SMP	PER VOW COMMENTS



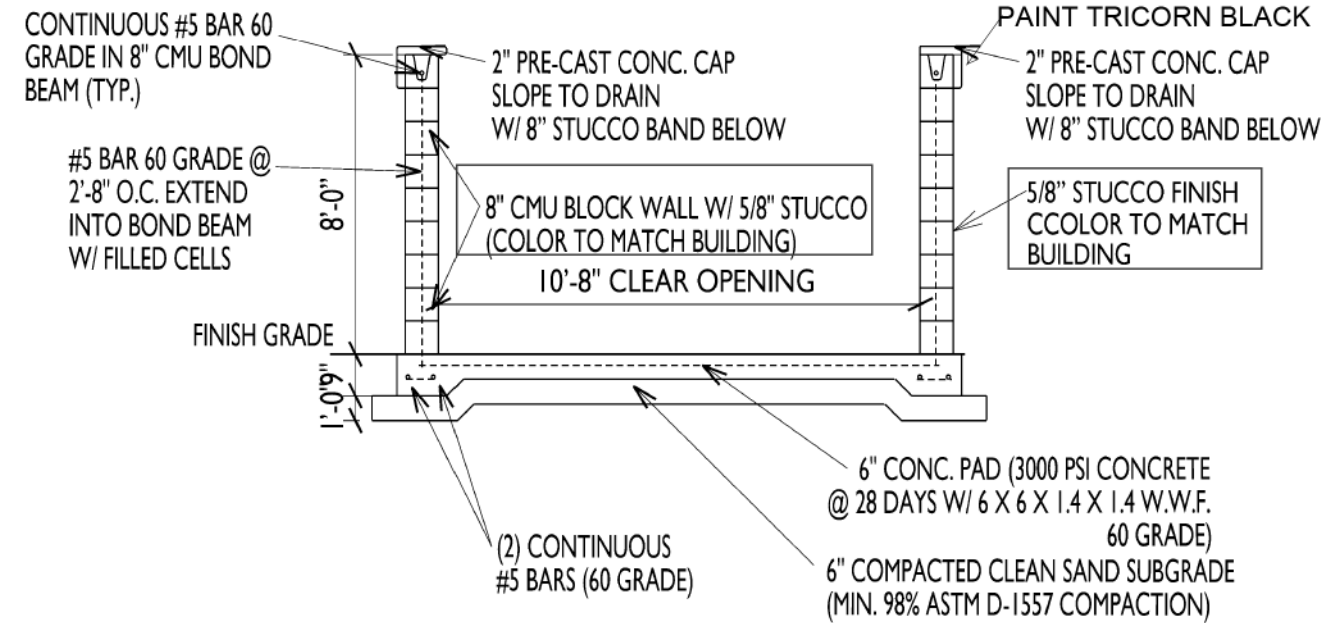
MONUMENT SIGN DETAIL
N. T. S.



BIKE RACK DETAIL
N. T. S.

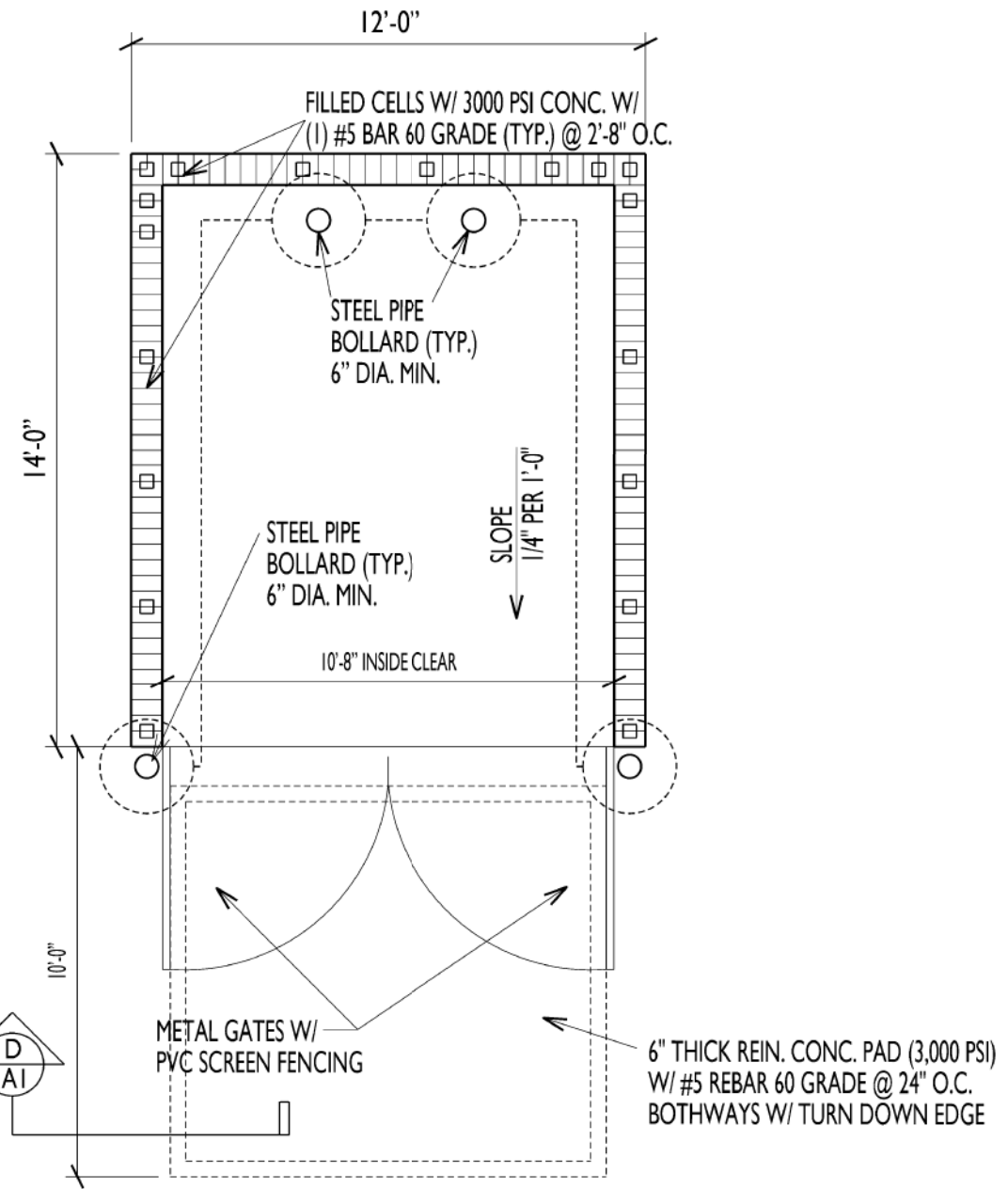
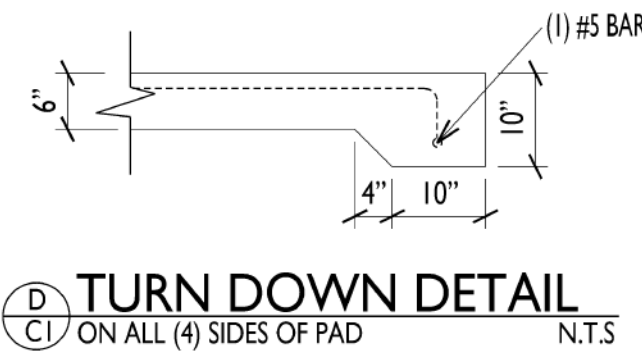


DUMPSTER ENCLOSURE SECTION
N.T.S.

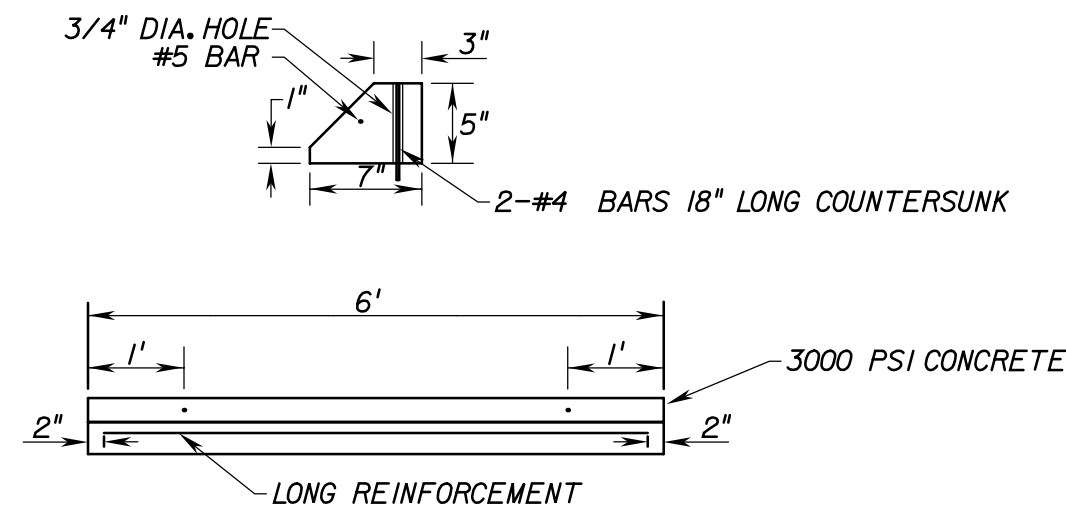


DUMPSTER ENCLOSURE SECTION
N.T.S.

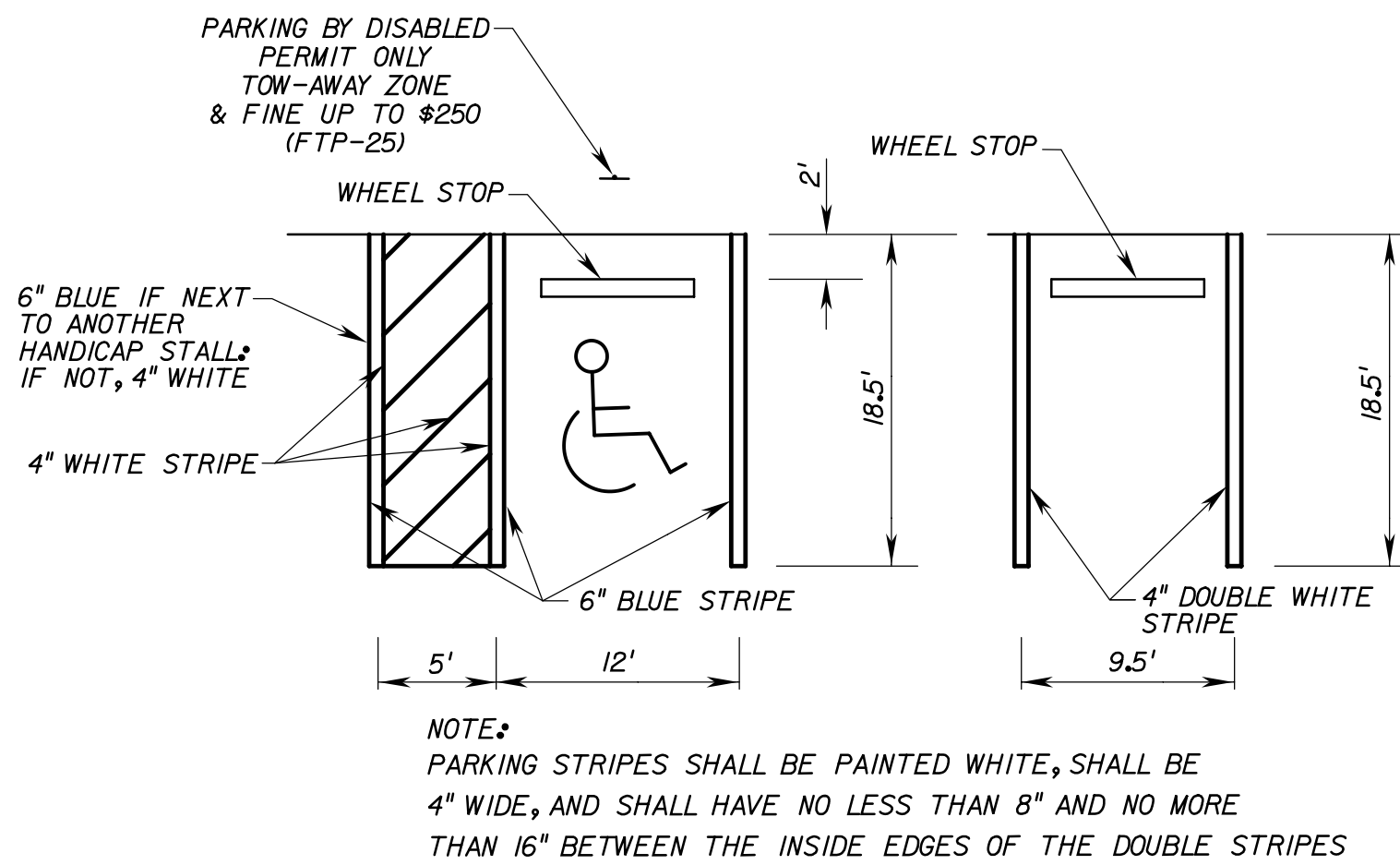
DUMPSTER DETAIL
N. T. S.



DUMPSTER ENCLOSURE PLAN
N.T.S.



STANDARD WHEEL STOP
N. T. S.



STANDARD PARKING

REVISIONS			
NO.	DATE	BY	DESCRIPTION
1	02/15/2021	SMP	PER VOW COMMENTS

SITE PLAN DETAILS

S. SEXTON ENGINEERING ASSOCIATES, INC.

CONSULTING ENGINEERS AND SURVEYORS

110 PONCE DE LEON STREET, SUITE 100

ROYAL PALM BEACH, FLORIDA 33411

PHONE 561-792-3122 FAX 561-792-3168

FL. REGISTRATIONS: LB0006837, EB 0007864

PROJ. NO. 2091 DATE 12/11/2020
SCALE N.T.S. SHEET 2 OF 2

CHICKEN SALAD CHICK
12792 FOREST HILL BLVD.
WELLINGTON, FLORIDA