







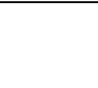
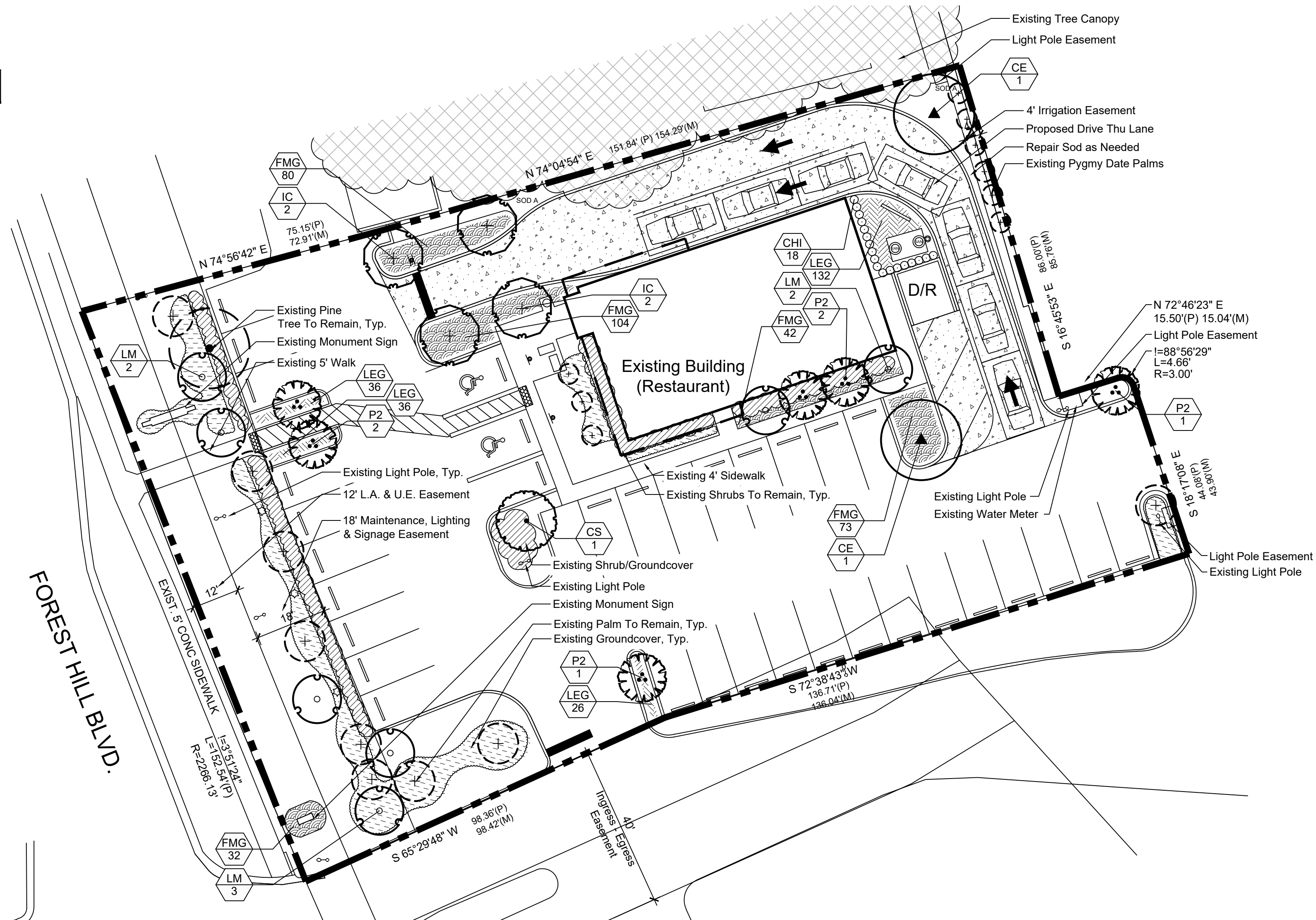


PLANT LIST

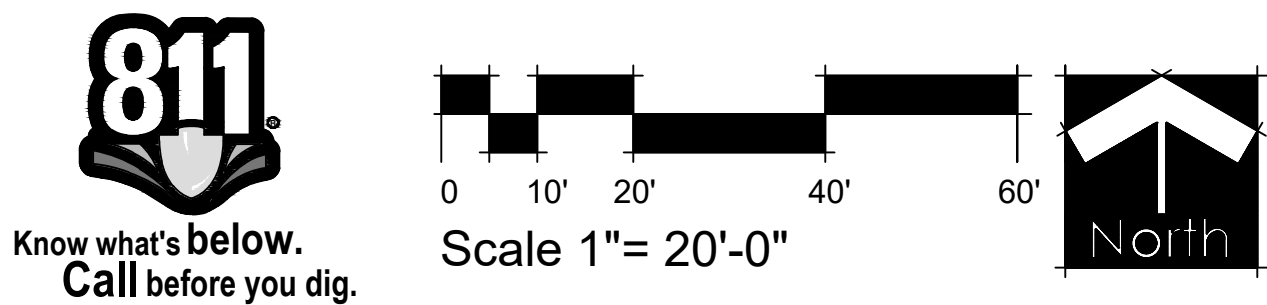
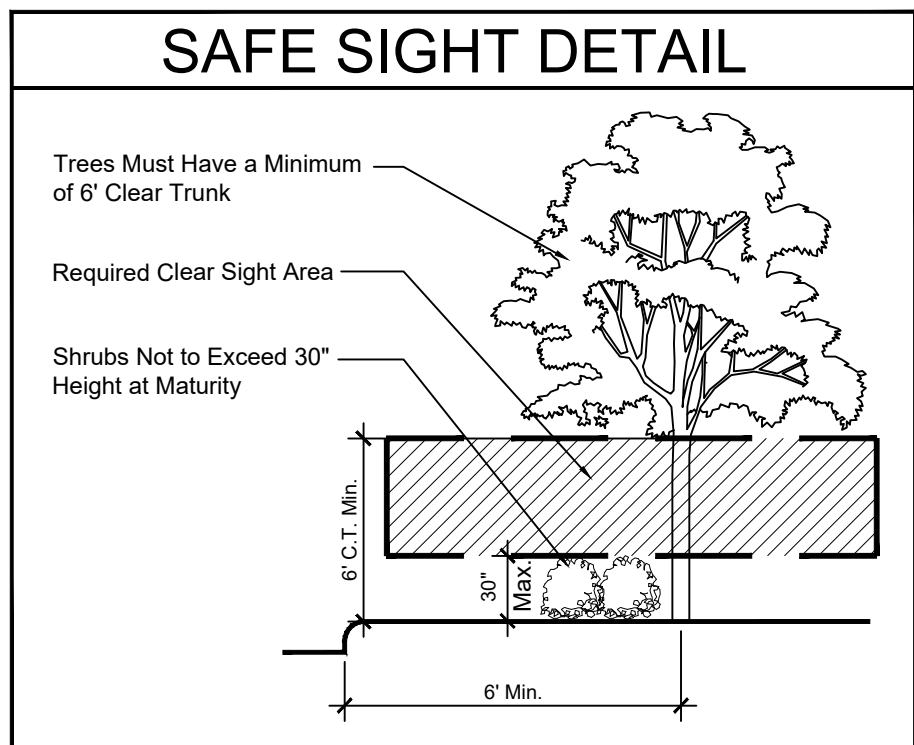
TREES	CODE	QTY	BOTANICAL / COMMON NAME	CALIPER	HEIGHT	SPREAD	CLEAR TRUNK	WATER USAGE	STATUS
	CE	2	Conocarpus erectus / Green Button Wood Single Straight Trunk, No Low Crotch	2.5" Cal.	14'	4'-6'	5' Min.	Low	Native
	CS	1	Conocarpus erectus sericeus / Silver Button Wood Single Straight Trunk	2.5" Cal.	12'	4'	5' Min.	Low	Native
	IC	4	Ilex cassine / Dahoon Holly Single Straight Trunk, Full to Base is Not Acceptable	2.5" Cal.	14'	4'-6'	5' Min.	Low	Native
FLOWERING TREES	CODE	QTY	BOTANICAL / COMMON NAME	CALIPER	HEIGHT	SPREAD	CLEAR TRUNK	WATER USAGE	STATUS
	LM	7	Lagerstroemia indica x fauriei 'Muskogee' / Muskogee Crape Myrtle Standard, Matched, No Low Crotch	2.5" Cal.	10'	4'	5' Min.	Low	Non-Native
PALM TREES	CODE	QTY	BOTANICAL / COMMON NAME	CALIPER	HEIGHT	SPREAD	CLEAR TRUNK	WATER USAGE	STATUS
	P2	6	Ptychosperma elegans / Alexander Palm Double Trunked, Matched	N/A	10' CT	10'	10' CT	Low	Non-Native
SHRUBS	CODE	QTY	BOTANICAL / COMMON NAME	HEIGHT	SPREAD	SPACING	WATER USAGE	STATUS	
	CHI	18	Chrysobalanus icaco / Coco Plum Full To Base, Small Shrubs	18"	18"	24" O.C.	Low	Native	
GROUND COVERS	CODE	QTY	BOTANICAL / COMMON NAME	HEIGHT	SPREAD	SPACING	WATER USAGE	STATUS	
	FMG	331	Ficus microcarpa 'Green Island' / Green Island Ficus Full to Base	12"	12"	18" O.C.	Medium	Non-Native	
	LEG	230	Liriope muscari 'Evergreen Giant' / Evergreen Giant Liriope Full, Groundcover	6"	6"	12" O.C.	Low	Non-Native	
	SOD A	1,068 sf	Stenotaphrum secundatum / St. Augustine Grass Solid Sod, Stagger Seams, Field Verify Sod Areas Prior To Bid, Sod All Disturbed Areas	N/A	N/A	N/A	High	Non-Native	



LANDSCAPE REQUIREMENTS				
Category	Requirement	No. Required	No. Provided	
Trees:				
West Property Line Trees 153'	40' O.C.	4	7 Existing	
West Property Line Flowering 153'	30' O.C.	5	5	
TOTAL TREES		9	12	
Shrubs:				
West Property Line 153'	24" o.c.	77	Existing	
TOTAL SHRUBS		77	Existing	
Category	Requirement	No. Required	No. Provided	
Interior Trees 31,580 sf	1 per 1500 sf	22	9 (1 Existing)*	
Shrubs 31,580 sf	3 per 1500 sf	66	18 + Exist.	
Parking Island Trees 9 Islands	1/Island	9	9 (2 Existing)	
Landscape Area 8,865 sf	40%	3,546 s.f.	3,654 s.f. (41%)	
Foundation Planting 228 lf	40%	92 lf	115 lf	
Foundation Planting Trees 92 lf	1 per 20 lf	5	5	
Flowering Trees 22 Trees	10% Min.	2 Min.	2	
14' Ht Trees 22 Trees	50% Min.	11 Min.	6	
Palm Substitution 22 Trees	20% Min	4 Min.	6	
TOTAL TREES	Buffers and Interiors	40	30 (10 Existing)	
TOTAL SHRUBS	Buffers and Interior	143	18 + Existing	

* Does not count tree required for buffer for vehicular use areas

LANDSCAPE NOTES	
1. Easements shall not encroach landscape buffers more than 5 feet.	
2. Landscaping in right-of-way buffers shall be installed on the exterior side of walls or fences.	
3. FDOT Type D or F curb shall be provided along the perimeter of all landscape, open space, drainage and grassed areas adjacent to paved vehicular use areas, except where wheel stops are provided.	
4. Safe sight triangles shall be maintained clear of vegetation to provide unobstructed visibility between 30" and 8' above crown of road.	
5. Light poles, fire hydrants, electrical/mechanical equipment, signs, drainage structures, etc. shall not interfere with landscaping in terminal islands, parking islands, medians, buffers or other landscaped areas.	
6. All plant material is to be installed a the height, spread and DBH/Caliper shown in the Plant List, container sizes are given as a suggestion only.	
7. No muck-grown sod shall be utilized in detention areas.	
8. All landscape areas (including sod) shall be irrigated with an underground automatic sprinkler system providing min. 150% coverage.	
9. Trees shown on this plan are for graphic representation only. Tree spacing is based on design requirements and the trees shown on these plans attempt to accomplish that spacing while maintaining the required setbacks from utilities. Trees may be field adjusted to avoid conflicts with driveways and underground utilities. In any case the trees shall be located in the field in accordance with the planting details shown hereon.	
10. Trees are to be installed with a ten foot (10') separation from any water or sewer main and/ or service, hydrants, and lift stations. If a ten foot (10') separation cannot be achieved, the tree can be installed with a root barrier system. Refer to the "Root Barrier" detail for installation requirements.	
11. All planters shall be excavated to a minimum depth of the native soil on site and back-filled with a suitable soil consisting of fifty percent (50%) composted organic matter, well-mixed with native soil. Backfill material shall be free from rock, construction debris, or other extraneous material.	
12. All substitutions or modifications from the approved Landscape Plan must be submitted and approved by the Landscape Architect in writing.	
13. All ground-mounted equipment shall be screened from view.	
14. Prior to C.O., the site must have 100% sod coverage, including greenspace in the directly adjacent ROW. All disturbed areas must be sodded including all areas used for staging and maneuvering that may not be indicated on the Landscape Plan.	
15. All trees shall meet FPL Right Tree, Right Place guidelines.	



SCHMIDT
NICHOLS

LANDSCAPE ARCHITECTURE
AND URBAN PLANNING

1551 N. Flagler Dr, Ste 102
West Palm Beach, FL 33401
Phone: 561.684.6141
Email: info@snlandplan.com
Website: www.snlandplan.com
License No: LC26000232

Chicken Salad Chick

Wellington, Florida

Date: 12/11/20
Scale: 1" = 20'-0"
Design By: MLD
Drawn By: AM
Checked By: JES
File No. 1008.01
Job No. 20-89

REVISIONS / SUBMISSIONS

02/26/21 Resubmittal

Landscape
Plan

LP-1 of 2