

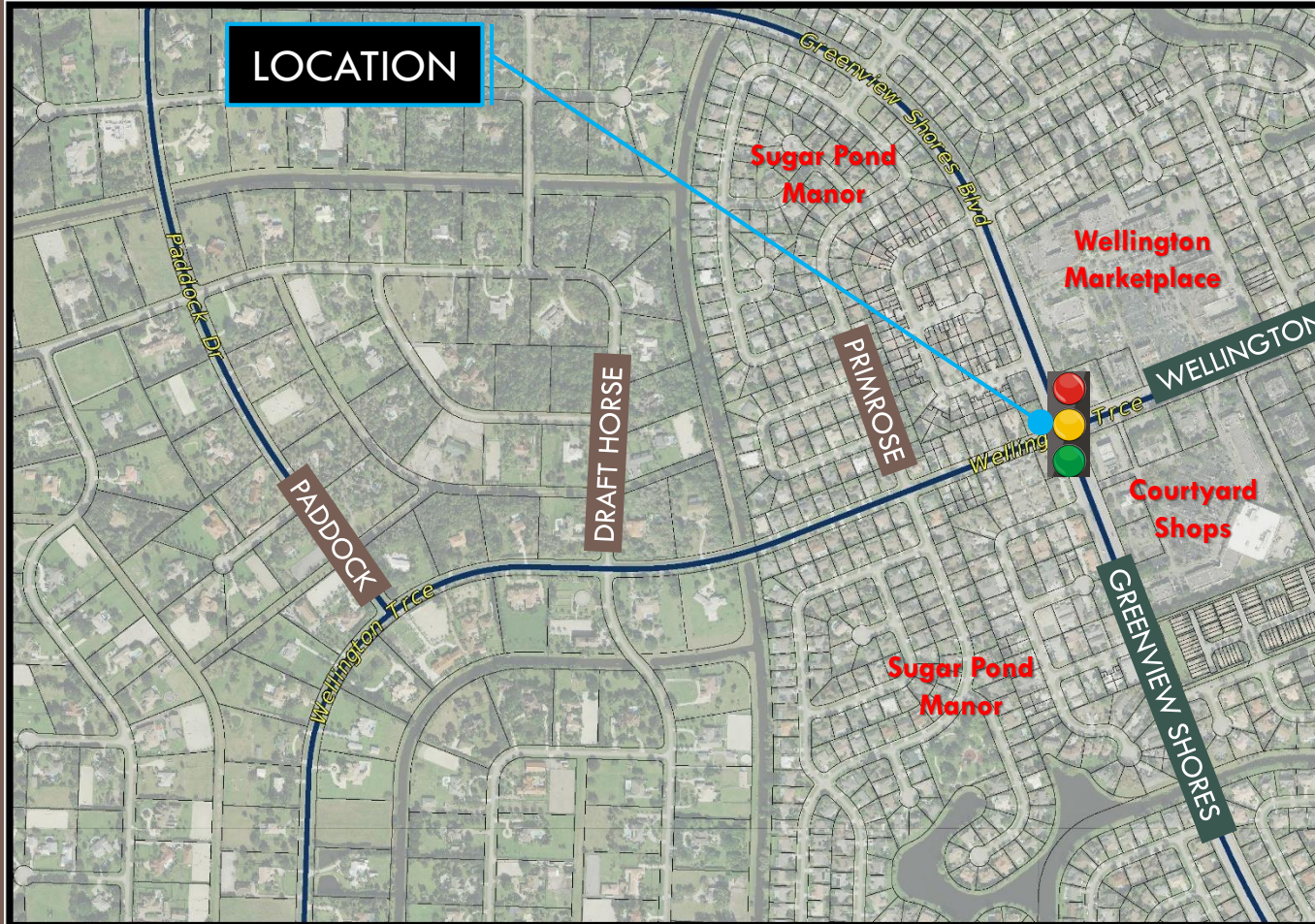
Flashing Yellow Arrow Intersection Signals

(Wellington Trace Greenview Shores)

Presented By:
Patrick Bathelemy, P.E.
Senior Engineer

June 23, 2021





Location Map (Overview)



WELLINGTON



Project History

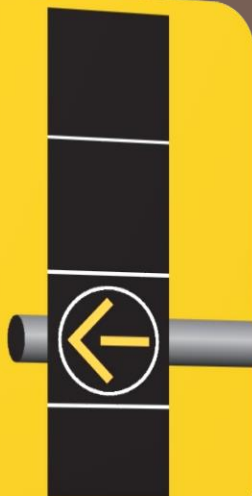
- ❑ **11/05/2020:** Citizen comment regarding potential crosswalk danger. Tom Lundeen, PE subsequently forwarded the residents concern to PBC traffic supervisor for advice on possible solutions.
- ❑ **01/06/2021:** PBC Traffic responded with a recommendation to convert the left turn movements at the intersection to a FYA (Flashing Yellow Arrow) configuration.
- ❑ **01/21/2021:** Staff reviewed the proposed changes and recommended approval of the intersection conversion.
- ❑ **01/25/2021:** Purchase order issued for intersection signal modifications.
- ❑ **04/01/2021:** Variable message boards placed at the intersection approaches.
- ❑ **04/05/2021:** VOW Media release, notifying the public of the upcoming modifications
- ❑ **04/07/2021:** Signal modifications implemented.
- ❑ **04/26/2021:** Council workshop update.

FYA, What is it?

FYA = Flashing Yellow Arrow

WHAT IS FLASHING YELLOW ARROW?

A new traffic signal that means you can turn left if there is a safe gap in traffic.



SOLID **GREEN**

SOLID **YELLOW**

FLASHING **YELLOW**

SOLID **RED**

HOW THEY WORK

SEE THIS	DO THIS
	Turn left.
	Prepare to stop or complete your left turn.
	Turn left provided there is a safe gap in vehicle and pedestrian traffic.
	Stop.

Benefits of a FYA Intersection

SAFETY BENEFITS

Safety Benefits:

- FYA has been found to have a higher level of understanding and correct response by left turn drivers.
- Enhances pedestrian safety in crosswalks.
- The Federal Highway Administration has found that the FYA reduces crashes.

MOBILITY BENEFITS

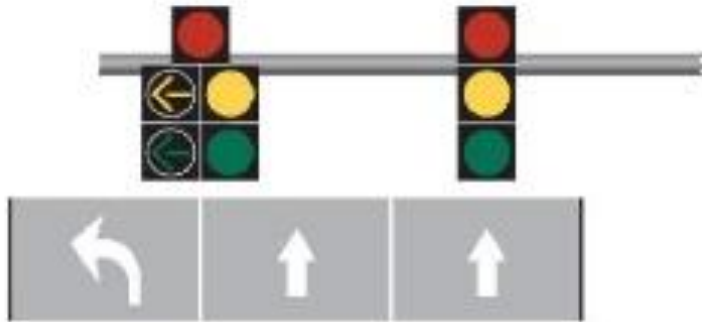
Mobility Benefits:

- FYA provides more opportunities for left turns that are currently prohibited.
- FYA improves signal synchronization.

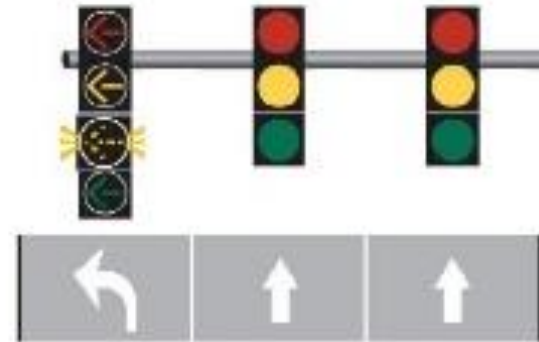


Signal modifications

CURRENT



NEW



Public Outreach

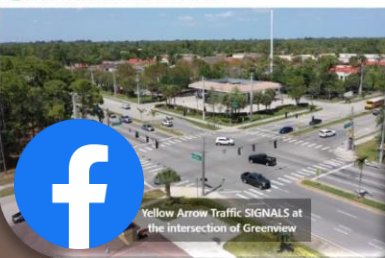
Village of Wellington Florida
Published by Liz Nunez • April 19 at 11:23 AM

WHAT YOU NEED TO KNOW about the NEW Flashing Yellow Arrow (FYA) traffic signals at the intersection of Greenview Shores Blvd and Wellington Trace

WHAT YOU NEED TO DO
Drivers must yield to oncoming traffic and pedestrians and then proceed to make a left turn with caution.

WHY THE NEW SIGNALS?
According to Federal Highway Administration officials, the new signals provide multiple benefits to motorists and pedestrians.

- Allow drivers to make left turns in a safer manner
- Keep traffic moving by offering drivers more opportunities to make left turns
- Easier to understand when to make a left turn



Media Release



For further information contact:
Liz Nunez
Public Information Officer
(561) 753-2072

MEDIA RELEASE

APRIL 8, 2021

FOR IMMEDIATE RELEASE

Wellington Intersection Gets New Flashing Yellow Arrow Traffic Signal

Palm Beach County's Traffic Division will install new Flashing Yellow Arrow (FYA) traffic signals at the intersection of Greenview Shores Blvd and Wellington Trace beginning Wednesday, April 7, 2021. Drivers can expect intermittent lane closures during the two-day installation period.

The new signals will be placed on all 4 approaches to the intersection, allowing drivers to make left turns in a safer manner. As FYA signals, drivers must yield to oncoming traffic and pedestrians and then proceed to make a left turn with caution. They remind motorists to not only watch for a safe gap in opposing traffic but to also watch for any pedestrians that may be in a conflicting crosswalk. Residents will notice new traffic signs at the intersection indicating "Left Turn Yield on Flashing Yellow Arrow."

The FYA traffic signal has been used nationwide for more than 10 years, including in more than 100 locations in Florida. Palm Beach County began installing FYAs in 2019. The new signals provide multiple benefits to motorists and pedestrians. According to national data provided by the Federal Highway Administration, FYA signals can reduce left-turn crashes by as much as 20%, keep traffic moving by offering drivers more opportunities to make left turns, and are easier to understand for motorists as to when they should make a left turn.

Village of Wellington
Public Information Officer Liz Nunez • 6 Apr



GOVERNMENT
BUSINESS
COMMUNITY
EXPLORE
HOW DO I...

FLASHING YELLOW ARROW TURN SIGNALS

Palm Beach County's Traffic Division installed new Flashing Yellow Arrow (FYA) traffic signals on all 4 approaches to the intersection of Greenview Shores Blvd and Wellington Trace.

As FYA signals, drivers must yield to oncoming traffic and pedestrians and then proceed to make a left turn with caution. They remind motorists to not only watch for a safe gap in opposing traffic but also to watch for any pedestrians that may be in a conflicting crosswalk.

The FYA traffic signal has been used nationwide for more than 10 years, including in more than 100 locations in Florida. Palm Beach County began installing FYAs in 2019. The new signals provide multiple benefits to motorists and pedestrians. According to national data provided by the Federal Highway Administration, FYA signals can reduce left-turn crashes by as much as 20%, keep traffic moving by offering drivers more opportunities to make left turns and then are easier to understand for motorists as to when to make a left turn.

In the video, we walk you through what you can expect to see and what you should do at a flashing yellow arrow signal.

How to Flashing Yellow Arrow Traffic

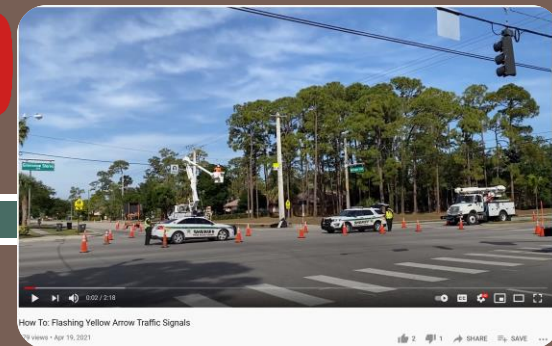
In FYA signals, the Florida Department of Transportation explains the benefits of the Flashing Yellow Arrow.

Wellingtonfl.gov

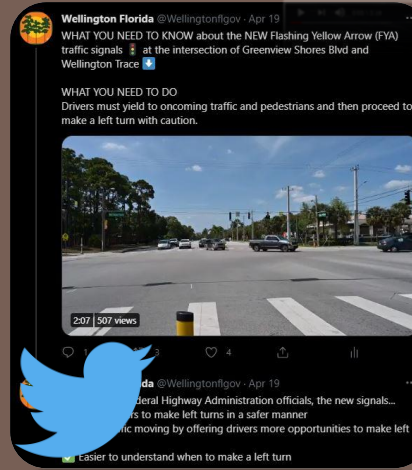
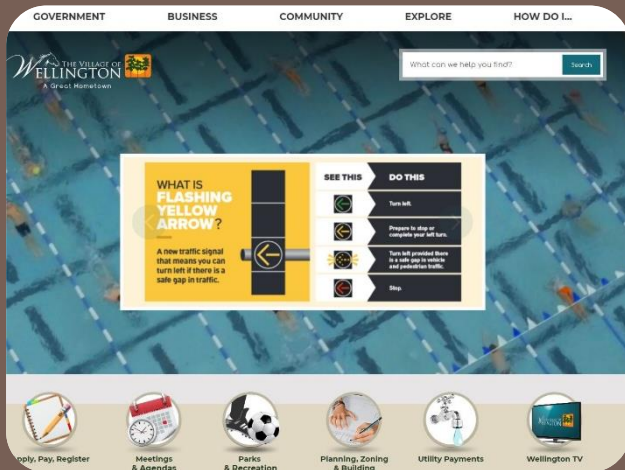


Public Tutorials

You Tube



Wellingtonfl.gov



Questions?

Jonathan Reinsvold –
jreinsvold@wellingtonfl.gov