

PREVIOUSLY SUBMITTED



#1
A.1 Previously Proposed Entry Feature w/ Signage
1/4" = 1'-0"

TOTAL DISPLAY SQ. FT: 131.25

NEWLY SUBMITTED



Newly proposed changes:
-Reduced short wall width, added step-down on both sides.
-Reduced quantity of tenant panels on wall.
-Added 'LOTIS' channel letters to side of entry feature for easy identification of site.
-Landscaping to include palm trees behind entry feature.

#1
A.1 Newly Proposed Entry Feature w/ Signage
1/4" = 1'-0"

TOTAL DISPLAY SQ. FT: 110.45



SOUTHEAST SIGN CO.
ELECTRICAL SIGN AND LIGHTING SPECIALISTS
3375 NW 55th St. • Suite B • Ft. Lauderdale, FL 33309
954-332-2263

LOTIS
WELLINGTON, FL

SALES ASSOC: Nick Santoriello
PROJECT MGR: Nick Santoriello
DESIGNER: Justin Ortega

FILE: LOT_WEL_MSP_R20_CHANGES
PATH: O:\Client Files\Lotis\Design\MSP\

DATE	REV.	DESCRIPTION	INITIALS
04.12.21	R8	Update Site Map Marker Numbering	JO
06.29.21	R9	Small Changes	JO
08.10.21	R10	Revise to New Template, Revise Sign A Wall	JO
08.10.21	R11	Update Sign A	JO
08.11.21	R12	Update Sign A	JO
08.11.21	R13	Update Sign A	JO
08.12.21	R14	Update Sign A	JO
08.13.21	R15	Update Sign A	JO
08.20.21	R16	Update Sign C Placement, Update 3D Renderings	JO
08.25.21	R17	Updates Per City Feedback	JO
08.26.21	R18	Update Sign C Placement	JO
09.08.21	R19	Add 2nd Opt for Sign #3 (B)	JO
09.10.21	R20	Update Sign A Short Wall	JO

ZONING:

SQUARE FOOT CALCULATIONS:

ALLOWED TOTAL	
PROPOSED TOTAL	

CUSTOMER APPROVAL:

☐ Approved


☐ Approved as Noted

☐ Not Approved

Customer Signature:

Date:

Customer Notes:

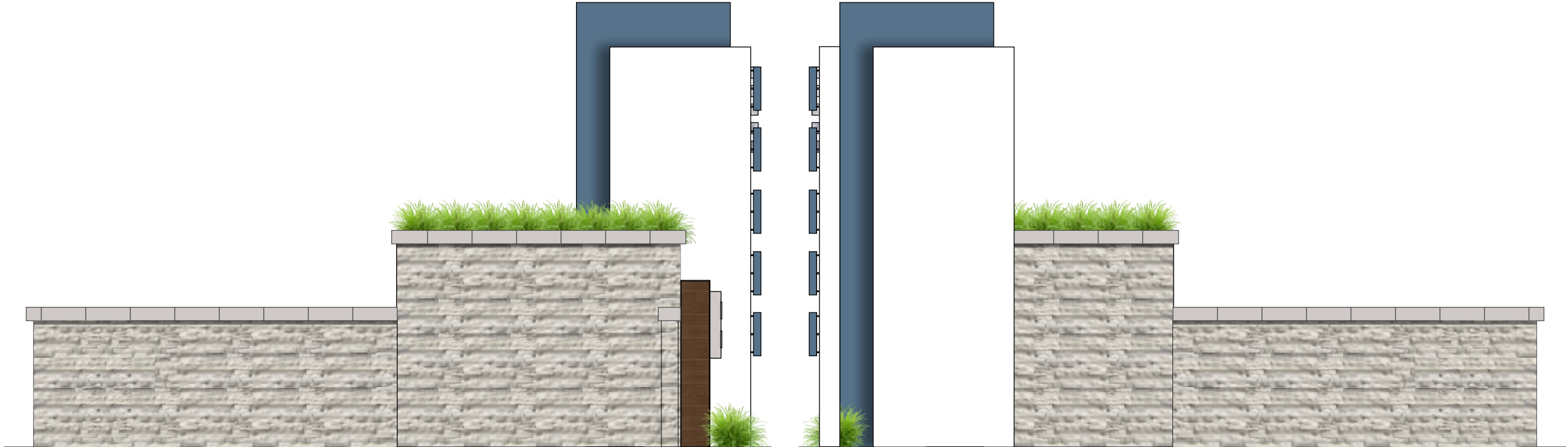


LISTED
MET
c us

Complies with
UL 48
CSA C22.2 No.207

THE STRUCTURAL DESIGN CONFORMS TO THE FOLLOWING CODES AND SPECIFICATIONS: THE FLORIDA BUILDING CODE SEVENTH EDITION (2020). THE AMERICAN INSTITUTE OF STEEL CONSTRUCTION (MANUAL OF STEEL CONSTRUCTION, 9TH EDITION). THE AMERICAN WELDING SOCIETY (AWS D1.1-15. THE AMERICAN CONCRETE INSTITUTE BUILDING CODE REQUIREMENTS FOR STRUCTURAL CONCRETE (ACI 318-14). THE SPECIFICATION FOR ALUMINUM STRUCTURES BY THE ALUMINUM ASSOCIATION (CURRENT EDITION).

PREVIOUSLY SUBMITTED



Previously Proposed Side View
3/16" = 1'-0"

NEWLY SUBMITTED



Newly proposed changes:
-Reduced short wall width, added step-down on both sides.
-Reduced quantity of tenant panels on wall.
-Added 'LOTIS' channel letters to side of entry feature for easy identification of site.
-Landscaping to include palm trees behind entry feature.

Newly Proposed Side View
3/16" = 1'-0"

LOTIS
WELLINGTON, FL

SALES ASSOC: Nick Santoriello
PROJECT MGR: Nick Santoriello
DESIGNER: Justin Ortega

FILE: LOT_WEL_MSP_R20_CHANGES
PATH: O:\Client Files\Lotis\Design\MSP\

DATE	REV.	DESCRIPTION	INITIALS
04.12.21	R8	Update Site Map Marker Numbering	JO
06.29.21	R9	Small Changes	JO
08.10.21	R10	Revise to New Template, Revise Sign A Wall	JO
08.10.21	R11	Update Sign A	JO
08.11.21	R12	Update Sign A	JO
08.11.21	R13	Update Sign A	JO
08.12.21	R14	Update Sign A	JO
08.13.21	R15	Update Sign A	JO
08.20.21	R16	Update Sign C Placement, Update 3D Renderings	JO
08.25.21	R17	Updates Per City Feedback	JO
08.26.21	R18	Update Sign C Placement	JO
09.08.21	R19	Add 2nd Opt for Sign #3 (B)	JO
09.10.21	R20	Update Sign A Short Wall	JO

ZONING:

SQUARE FOOT CALCULATIONS:

ALLOWED TOTAL	
PROPOSED TOTAL	

CUSTOMER APPROVAL:

☐ Approved

☐ Approved as Noted

☐ Not Approved

Customer Signature: _____

Date: _____

Customer Notes: _____



#2
A.1

Previously Proposed Entry Feature w/ Signage
1/4" = 1'-0"

TOTAL DISPLAY SQ. FT: 131.25

NEWLY SUBMITTED



Newly proposed changes:
-Reduced short wall width, added step-down on both sides.
-Reduced quantity of tenant panels on wall.
-Added 'LOTIS' channel letters to side of entry feature for easy identification of site.
-Landscaping to include palm trees behind entry feature.

#2
A.1

Newly Proposed Entry Feature w/ Signage
1/4" = 1'-0"

TOTAL DISPLAY SQ. FT: 110.45



SOUTHEAST SIGN CO.

ELECTRICAL SIGN AND LIGHTING SPECIALISTS
3375 NW 55th St. • Suite B • Ft. Lauderdale, FL 33309
954-332-2263

LOTIS

WELLINGTON, FL

SALES ASSOC: Nick Santoriello
PROJECT MGR: Nick Santoriello
DESIGNER: Justin Ortega

FILE: LOT_WEL_MSP_R20_CHANGES
PATH: O:\Client Files\Lotis\Design\MSP\

DATE	REV.	DESCRIPTION	INITIALS
04.12.21	R8	Update Site Map Marker Numbering	JO
06.29.21	R9	Small Changes	JO
08.10.21	R10	Revise to New Template, Revise Sign A Wall	JO
08.10.21	R11	Update Sign A	JO
08.11.21	R12	Update Sign A	JO
08.11.21	R13	Update Sign A	JO
08.12.21	R14	Update Sign A	JO
08.13.21	R15	Update Sign A	JO
08.20.21	R16	Update Sign C Placement, Update 3D Renderings	JO
08.25.21	R17	Updates Per City Feedback	JO
08.26.21	R18	Update Sign C Placement	JO
09.08.21	R19	Add 2nd Opt for Sign #3 (B)	JO
09.10.21	R20	Update Sign A Short Wall	JO

ZONING:

SQUARE FOOT CALCULATIONS:

ALLOWED TOTAL	
PROPOSED TOTAL	

CUSTOMER APPROVAL:

- ☐ Approved
☐ Approved as Noted
☐ Not Approved

Customer Signature: _____

Date: _____

Customer Notes:



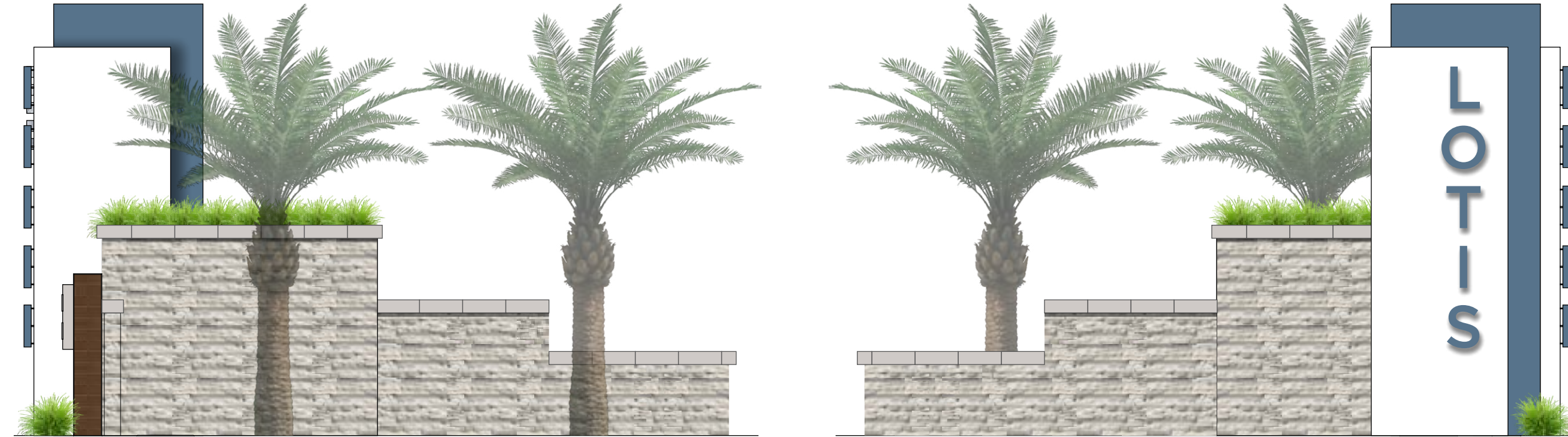
Complies with
UL 48
CSA C22.2 No.207

THE STRUCTURAL DESIGN CONFORMS TO THE FOLLOWING CODES AND SPECIFICATIONS: THE FLORIDA BUILDING CODE SEVENTH EDITION (2020). THE AMERICAN INSTITUTE OF STEEL CONSTRUCTION (MANUAL OF STEEL CONSTRUCTION, 9TH EDITION). THE AMERICAN WELDING SOCIETY (AWS D1.1-15. THE AMERICAN CONCRETE INSTITUTE BUILDING CODE REQUIREMENTS FOR STRUCTURAL CONCRETE (ACI 318-14). THE SPECIFICATION FOR ALUMINUM STRUCTURES BY THE ALUMINUM ASSOCIATION (CURRENT EDITION).




Previously Proposed Side View
3/16" = 1'-0"

NEWLY SUBMITTED



- Newly proposed changes:
- Reduced short wall width, added step-down on both sides.
 - Reduced quantity of tenant panels on wall.
 - Added 'LOTIS' channel letters to side of entry feature for easy identification of site.
 - Landscaping to include palm trees behind entry feature.

Newly Proposed Side View
3/16" = 1'-0"



SOUTHEAST SIGN CO.
ELECTRICAL SIGN AND LIGHTING SPECIALISTS
3375 NW 55th St. • Suite B • Ft. Lauderdale, FL 33309
954-332-2263

LOTIS
WELLINGTON, FL

SALES ASSOC: Nick Santoriello
PROJECT MGR: Nick Santoriello
DESIGNER: Justin Ortega

FILE: LOT_WEL_MSP_R20_CHANGES
PATH: O:\Client Files\Lotis\Design\MSP\

DATE	REV.	DESCRIPTION	INITIALS
04.12.21	R8	Update Site Map Marker Numbering	JO
06.29.21	R9	Small Changes	JO
08.10.21	R10	Revise to New Template, Revise Sign A Wall	JO
08.10.21	R11	Update Sign A	JO
08.11.21	R12	Update Sign A	JO
08.11.21	R13	Update Sign A	JO
08.12.21	R14	Update Sign A	JO
08.13.21	R15	Update Sign A	JO
08.20.21	R16	Update Sign C Placement, Update 3D Renderings	JO
08.25.21	R17	Updates Per City Feedback	JO
08.26.21	R18	Update Sign C Placement	JO
09.08.21	R19	Add 2nd Opt for Sign #3 (B)	JO
09.10.21	R20	Update Sign A Short Wall	JO

ZONING:

SQUARE FOOT CALCULATIONS:

ALLOWED TOTAL	
PROPOSED TOTAL	

CUSTOMER APPROVAL:

- ☐ Approved
☐ Approved as Noted
☐ Not Approved

Customer Signature:

Date:

Customer Notes:

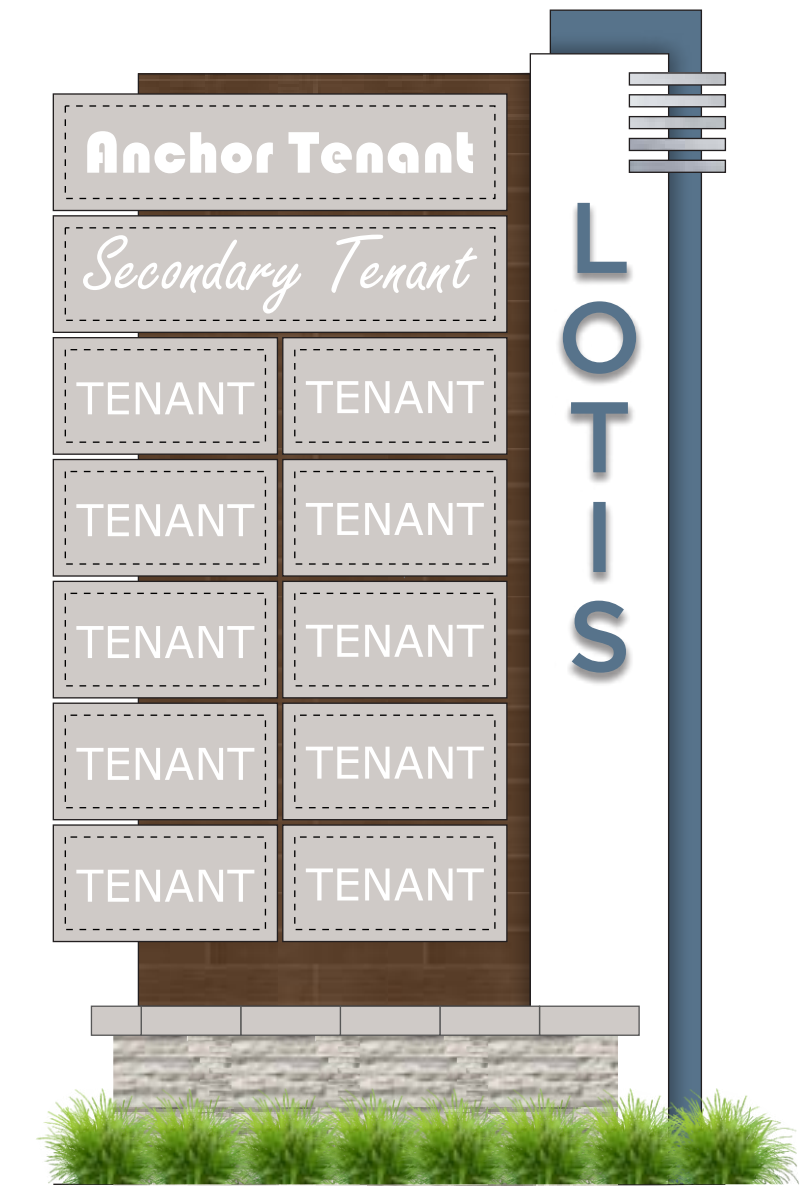


LISTED
MET
UL 48
CSA C22.2 No.207

Complies with
UL 48
CSA C22.2 No.207

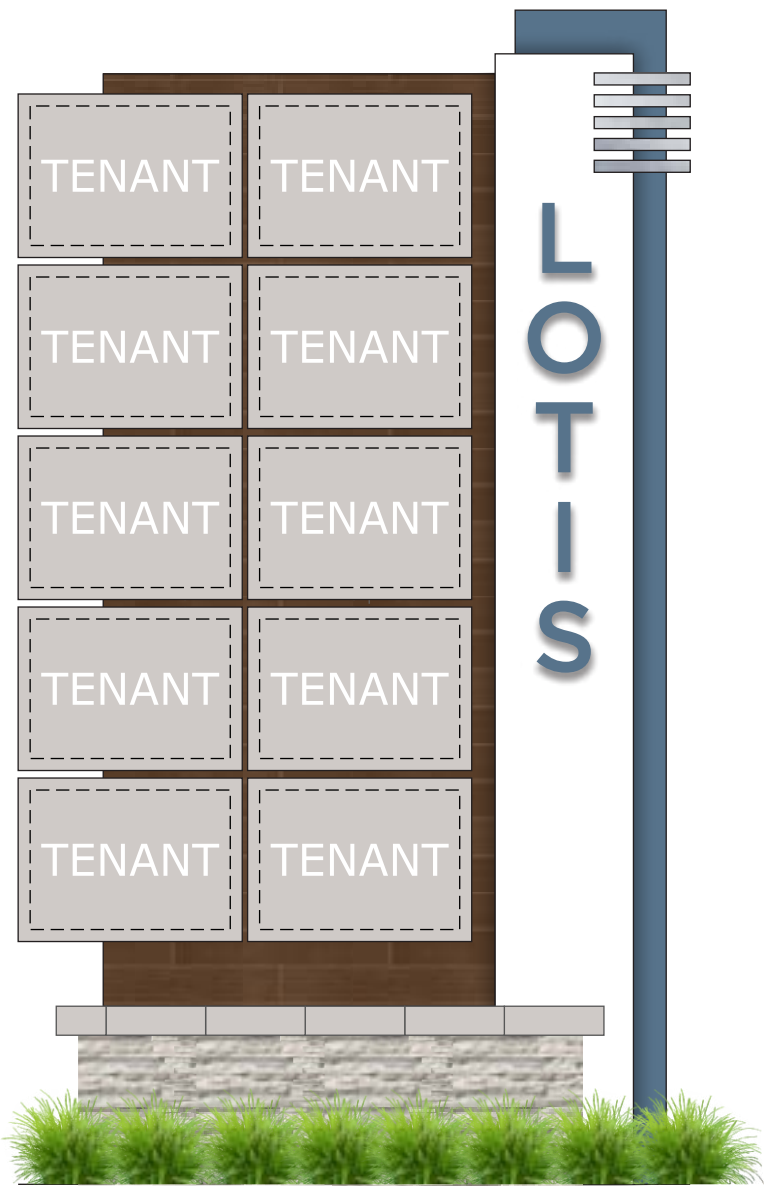
THE STRUCTURAL DESIGN CONFORMS TO THE FOLLOWING CODES AND SPECIFICATIONS: THE FLORIDA BUILDING CODE SEVENTH EDITION (2020). THE AMERICAN INSTITUTE OF STEEL CONSTRUCTION (MANUAL OF STEEL CONSTRUCTION, 9TH EDITION). THE AMERICAN WELDING SOCIETY (AWS D1.1-15). THE AMERICAN CONCRETE INSTITUTE BUILDING CODE REQUIREMENTS FOR STRUCTURAL CONCRETE (ACI 318-14). THE SPECIFICATION FOR ALUMINUM STRUCTURES BY THE ALUMINUM ASSOCIATION (CURRENT EDITION).

PREVIOUSLY SUBMITTED



#3 B.1 Previously Proposed Multi-Panel Monument
3/8" = 1'-0" TOTAL SQ. FT.: 85.65

NEWLY SUBMITTED



Newly proposed changes:
-Reduced Number of Tenant Panels from 12 to 10.
-Square Footage remains the same.

#3 B.1 Previously Proposed Multi-Panel Monument
3/8" = 1'-0" TOTAL SQ. FT.: 85.65

LOTIS
WELLINGTON, FL

SALES ASSOC: Nick Santoriello
PROJECT MGR: Nick Santoriello
DESIGNER: Justin Ortega

FILE: LOT_WEL_MSP_R20_CHANGES
PATH: O:\Client Files\Lotis\Design\MSP\

DATE	REV.	DESCRIPTION	INITIALS
04.12.21	R8	Update Site Map Marker Numbering	JO
06.29.21	R9	Small Changes	JO
08.10.21	R10	Revise to New Template, Revise Sign A Wall	JO
08.10.21	R11	Update Sign A	JO
08.11.21	R12	Update Sign A	JO
08.11.21	R13	Update Sign A	JO
08.12.21	R14	Update Sign A	JO
08.13.21	R15	Update Sign A	JO
08.20.21	R16	Update Sign C Placement, Update 3D Renderings	JO
08.25.21	R17	Updates Per City Feedback	JO
08.26.21	R18	Update Sign C Placement	JO
09.08.21	R19	Add 2nd Opt for Sign #3 (B)	JO
09.10.21	R20	Update Sign A Short Wall	JO

ZONING:

SQUARE FOOT CALCULATIONS:

ALLOWED TOTAL	
PROPOSED TOTAL	

CUSTOMER APPROVAL:

☐ Approved

☐ Approved as Noted

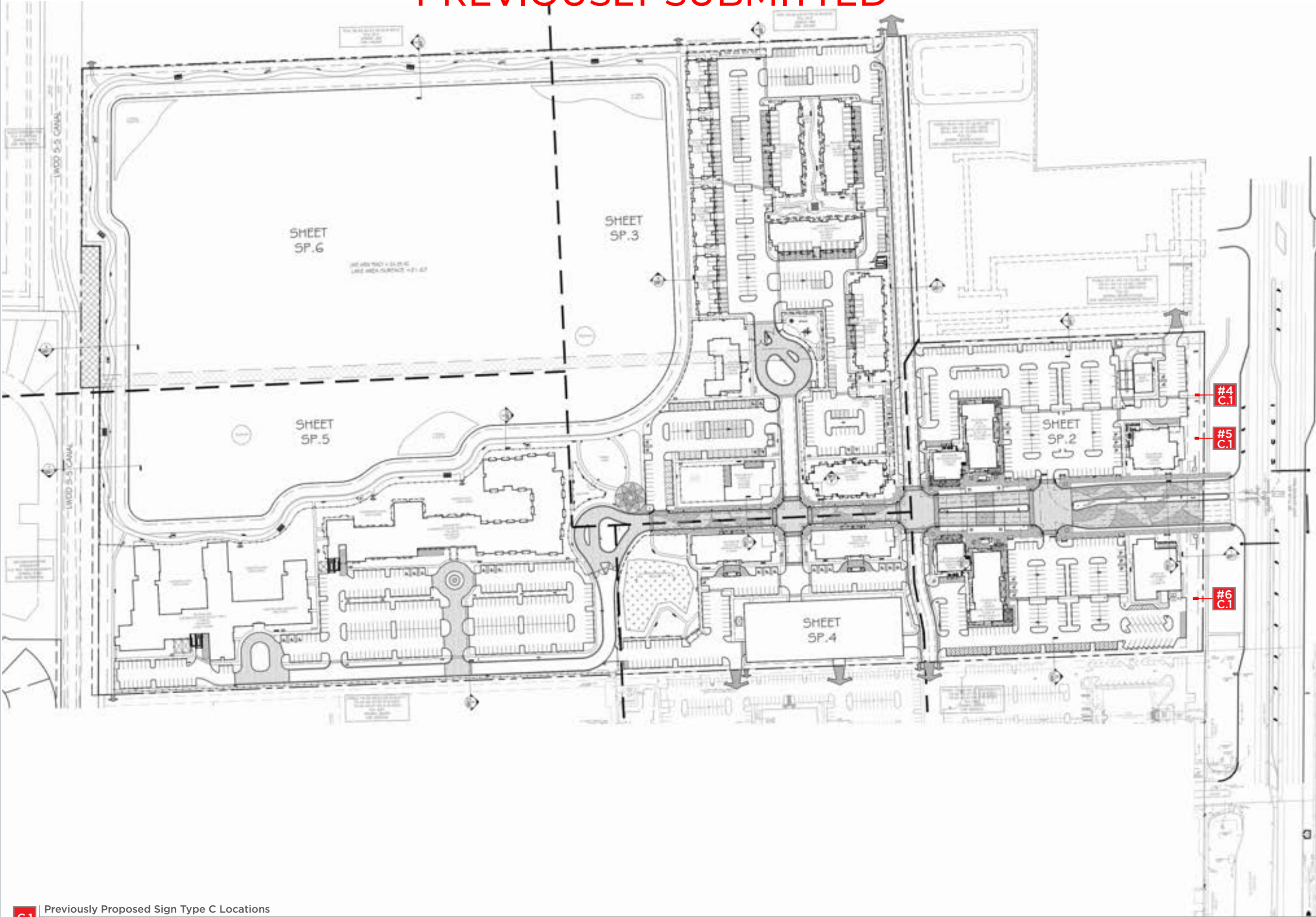
☐ Not Approved

Customer Signature:

Date:

Customer Notes:

PREVIOUSLY SUBMITTED



C.1

Previously Proposed Sign Type C Locations
3/8" = 1'-0"



SOUTHEAST SIGN CO.

ELECTRICAL SIGN AND LIGHTING SPECIALISTS
3375 NW 55th St. • Suite B • Ft. Lauderdale, FL 33309
954-332-2263

LOTIS

WELLINGTON, FL

SALES ASSOC: Nick Santoriello
PROJECT MGR: Nick Santoriello
DESIGNER: Justin Ortega

FILE: LOT_WEL_MSP_R20_CHANGES
PATH: O:\Client Files\Lotis\Design\MSP\

DATE	REV.	DESCRIPTION	INITIALS
04.12.21	R8	Update Site Map Marker Numbering	JO
06.29.21	R9	Small Changes	JO
08.10.21	R10	Revise to New Template, Revise Sign A Wall	JO
08.10.21	R11	Update Sign A	JO
08.11.21	R12	Update Sign A	JO
08.11.21	R13	Update Sign A	JO
08.12.21	R14	Update Sign A	JO
08.13.21	R15	Update Sign A	JO
08.20.21	R16	Update Sign C Placement, Update 3D Renderings	JO
08.25.21	R17	Updates Per City Feedback	JO
08.26.21	R18	Update Sign C Placement	JO
09.08.21	R19	Add 2nd Opt for Sign #3 (B)	JO
09.10.21	R20	Update Sign A Short Wall	JO

ZONING:

SQUARE FOOT CALCULATIONS:

ALLOWED TOTAL	
PROPOSED TOTAL	

CUSTOMER APPROVAL:

- ☐ Approved
☐ Approved as Noted
☐ Not Approved

Customer Signature:

Date:

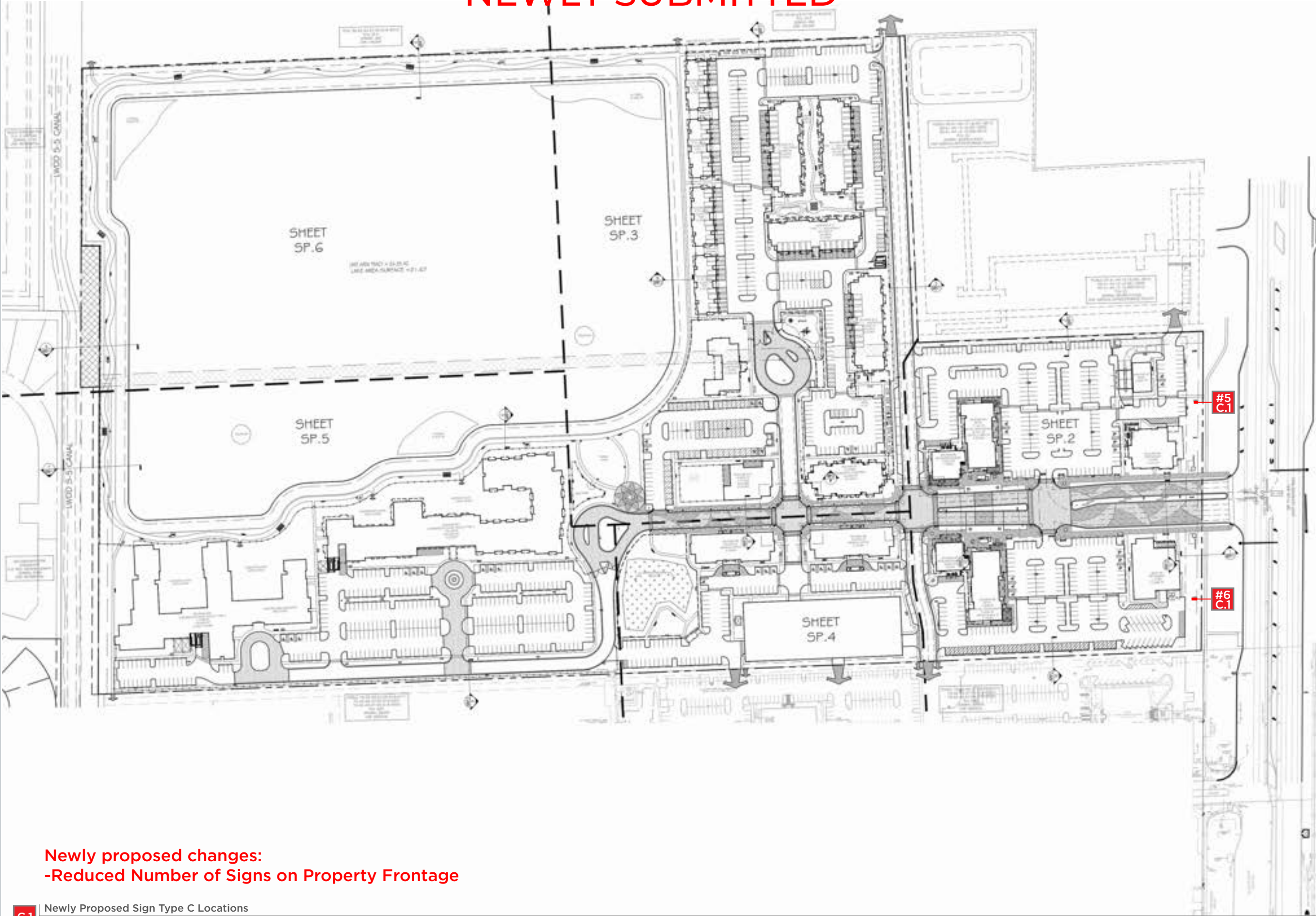
Customer Notes:



Complies with
UL 48
CSA C22.2 No.207

THE STRUCTURAL DESIGN CONFORMS TO THE FOLLOWING CODES AND SPECIFICATIONS: THE FLORIDA BUILDING CODE SEVENTH EDITION (2020). THE AMERICAN INSTITUTE OF STEEL CONSTRUCTION (MANUAL OF STEEL CONSTRUCTION, 9TH EDITION). THE AMERICAN WELDING SOCIETY (AWS D1.1-15). THE AMERICAN CONCRETE INSTITUTE BUILDING CODE REQUIREMENTS FOR STRUCTURAL CONCRETE (ACI 318-14). THE SPECIFICATION FOR ALUMINUM STRUCTURES BY THE ALUMINUM ASSOCIATION (CURRENT EDITION).

NEWLY SUBMITTED



Newly proposed changes:
-Reduced Number of Signs on Property Frontage

C.1 Newly Proposed Sign Type C Locations
3/8" = 1'-0"



SOUTHEAST SIGN CO.
ELECTRICAL SIGN AND LIGHTING SPECIALISTS
3375 NW 55th St. • Suite B • Ft. Lauderdale, FL 33309
954-332-2263

LOTIS

WELLINGTON, FL

SALES ASSOC: Nick Santoriello
PROJECT MGR: Nick Santoriello
DESIGNER: Justin Ortega

FILE: LOT_WEL_MSP_R20_CHANGES
PATH: O:\Client Files\Lotis\Design\MSP\

DATE	REV.	DESCRIPTION	INITIALS
04.12.21	R8	Update Site Map Marker Numbering	JO
06.29.21	R9	Small Changes	JO
08.10.21	R10	Revise to New Template, Revise Sign A Wall	JO
08.10.21	R11	Update Sign A	JO
08.11.21	R12	Update Sign A	JO
08.11.21	R13	Update Sign A	JO
08.12.21	R14	Update Sign A	JO
08.13.21	R15	Update Sign A	JO
08.20.21	R16	Update Sign C Placement, Update 3D Renderings	JO
08.25.21	R17	Updates Per City Feedback	JO
08.26.21	R18	Update Sign C Placement	JO
09.08.21	R19	Add 2nd Opt for Sign #3 (B)	JO
09.10.21	R20	Update Sign A Short Wall	JO

ZONING:

SQUARE FOOT CALCULATIONS:

ALLOWED TOTAL	
PROPOSED TOTAL	

CUSTOMER APPROVAL:

☐ Approved
☐ Approved as Noted
☐ Not Approved

Customer Signature:

Date:

Customer Notes:



Complies with
UL 48
CSA C22.2 No.207

THE STRUCTURAL DESIGN CONFORMS TO THE FOLLOWING CODES AND SPECIFICATIONS: THE FLORIDA BUILDING CODE SEVENTH EDITION (2020). THE AMERICAN INSTITUTE OF STEEL CONSTRUCTION (MANUAL OF STEEL CONSTRUCTION, 9TH EDITION). THE AMERICAN WELDING SOCIETY (AWS D1.1-15). THE AMERICAN CONCRETE INSTITUTE BUILDING CODE REQUIREMENTS FOR STRUCTURAL CONCRETE (ACI 318-14). THE SPECIFICATION FOR ALUMINUM STRUCTURES BY THE ALUMINUM ASSOCIATION (CURRENT EDITION).